

2 SOUTHEAST ELEVATION
1/4" = 1'-0"




1 SOUTHWEST ELEVATION
1/4" = 1'-0"


FIBER CEMENT PANEL - DARK - FC-1
NICHIIA FIBER CEMENT
VINTAGEWOOD AWP 3030 AND AWP
1818
COLOR: BARK


FIBER CEMENT PANEL - LIGHT - FC-2
NICHIIA FIBER CEMENT
VINTAGEWOOD AWP 3030 AND AWP
1818
COLOR: ASH


CAST STONE - ST-4
CORONADO STONE PRODUCTS
MANUFACTURED STONE VENEER
COLOR: CREAM
FINISH: CHISELED LIMESTONE


ALUMINUM COMPOSITE MATERIAL - ACM-1
ALCOA ARCHITECTURAL PRODUCTS
REYNOBOND
COLOR: DURAGLOSS "CHASE SILVER"


ROOF COPING - DARK - RC-1
PETERSON ALUMINUM / PAC-CLAD
PAC-CONTINUOUS
COLOR: AGED BRONZE



T.O. PARAPET
+21'-6"

T.O. PARAPET
+19'-4"

T.O. PARAPET
+17'-0"

T.O. PARAPET
+12'-4"

T.O. PARAPET
+12'-4"

E.O. CANOPY
+8'-10"

T.O. SLAB / FND.
0'-0"

FINISH GRADE
VARIES - 0'-2" TO 0'-6"

2 NORTHWEST ELEVATION
1/4" = 1'-0"



T.O. PARAPET
+21'-6"

T.O. PARAPET
+19'-4"

T.O. PARAPET
+17'-0"

T.O. PARAPET
+12'-4"

T.O. WINDOW OPENING
+10'-0"

T.O. SLAB / FND.
0'-0"


FINISH GRADE
VARIES - 0'-2" TO 0'-6"

1 NORTHEAST ELEVATION
1/4" = 1'-0"

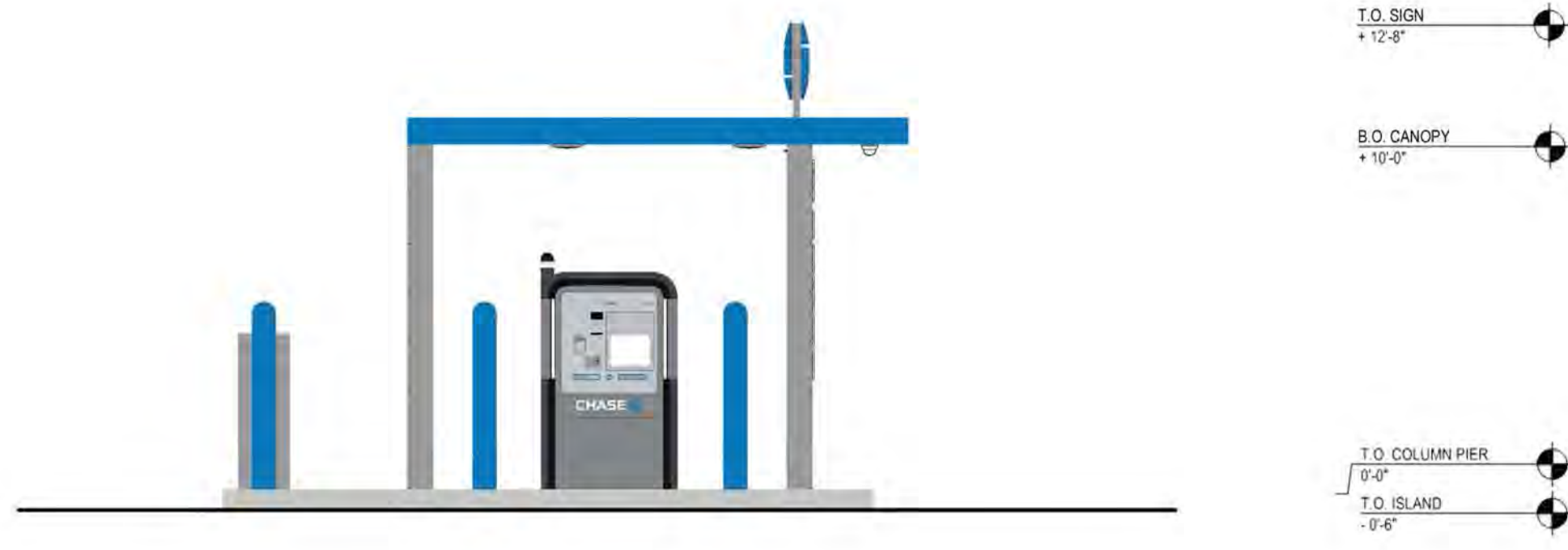

FIBER CEMENT PANEL - DARK - FC-1
NICHHA FIBER CEMENT
VINTAGEWOOD AWP 3030 AND AWP
1818
COLOR: BARK


FIBER CEMENT PANEL - LIGHT - FC-2
NICHHA FIBER CEMENT
VINTAGEWOOD AWP 3030 AND AWP
1818
COLOR: ASH

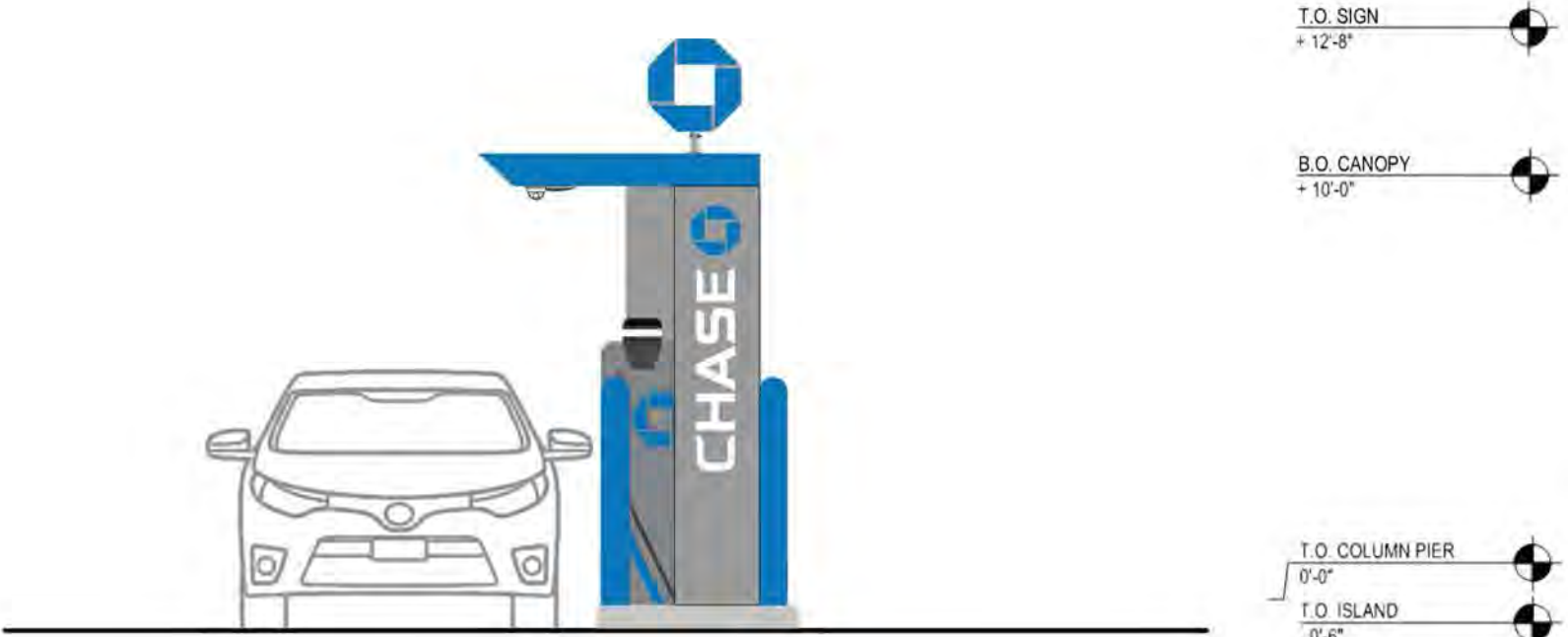

CAST STONE - ST-4
CORONADO STONE PRODUCTS
MANUFACTURED STONE VENEER
COLOR: CREAM
FINISH: CHISELED LIMESTONE


ALUMINUM COMPOSITE MATERIAL - ACM-1
ALCOA ARCHITECTURAL PRODUCTS
REYNOBOND
COLOR: DURAGLOSS "CHASE SILVER"

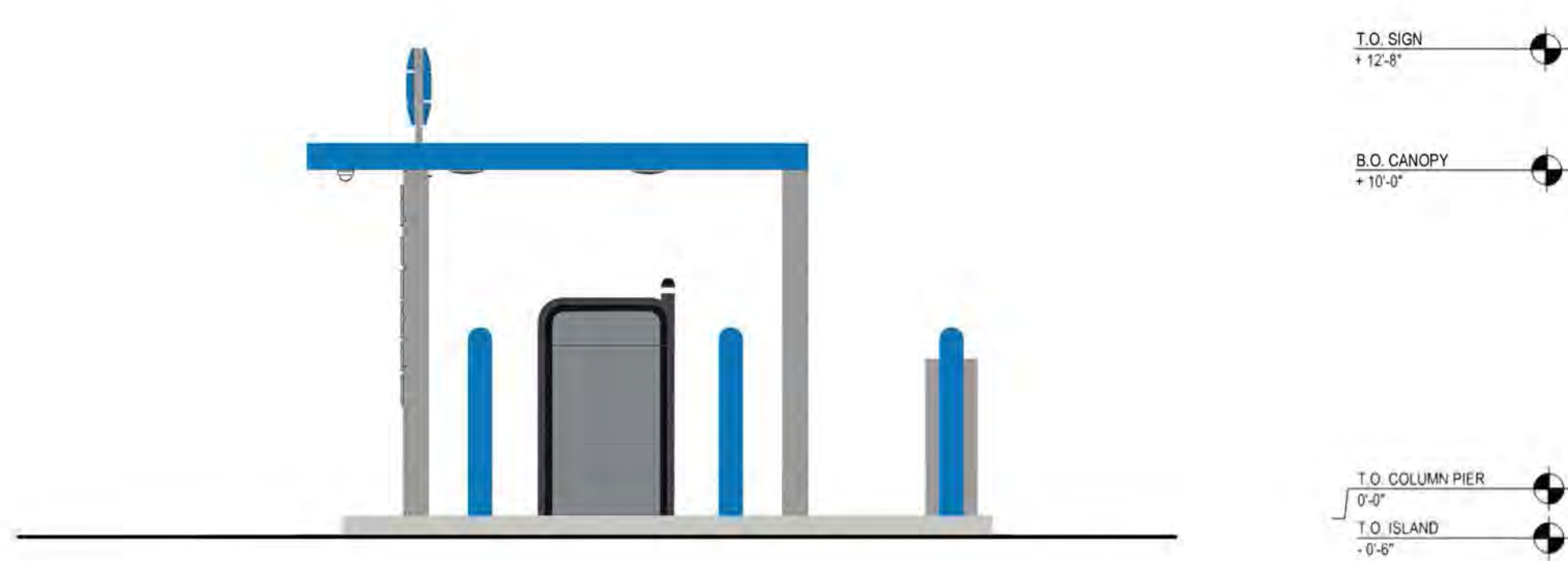

ROOF COPING - DARK - RC-1
PETERSON ALUMINUM / PAC-CLAD
PAC-CONTINUOUS
COLOR: AGED BRONZE



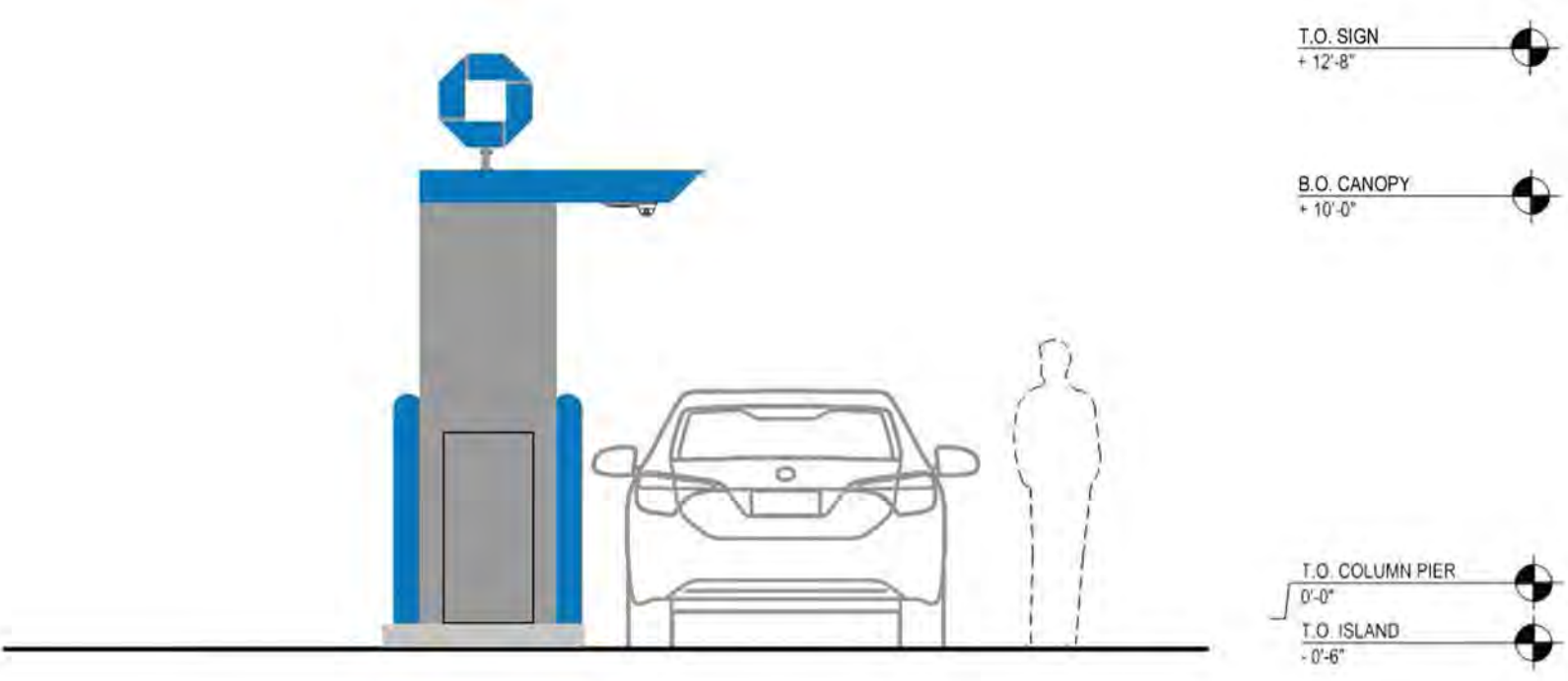
4 NORTHWEST ELEVATION
1/4" = 1'-0"



3 SOUTHWEST ELEVATION
1/4" = 1'-0"




2 SOUTHEAST ELEVATION
1/4" = 1'-0"



1 NORTHEAST ELEVATION
1/4" = 1'-0"

 PAINTED ALUMINUM PANELS - BLUE
 FACTORY FINISHED ELECTRO-STATIC
 PAINTED ALUM. PANELS
 COLOR: BLUE

 PAINTED ALUMINUM PANELS - GREY
 FACTORY FINISHED ELECTRO-STATIC
 PAINTED ALUM. PANELS
 COLOR: GREY