

### STRUCTURAL NOTES

**STRUCTURAL DESIGN CRITERIA:**

STRUCTURAL DESIGN IS BASED ON THE 2015 VIRGINIA UNIFORM STATEWIDE BUILDING CODE (USBC)

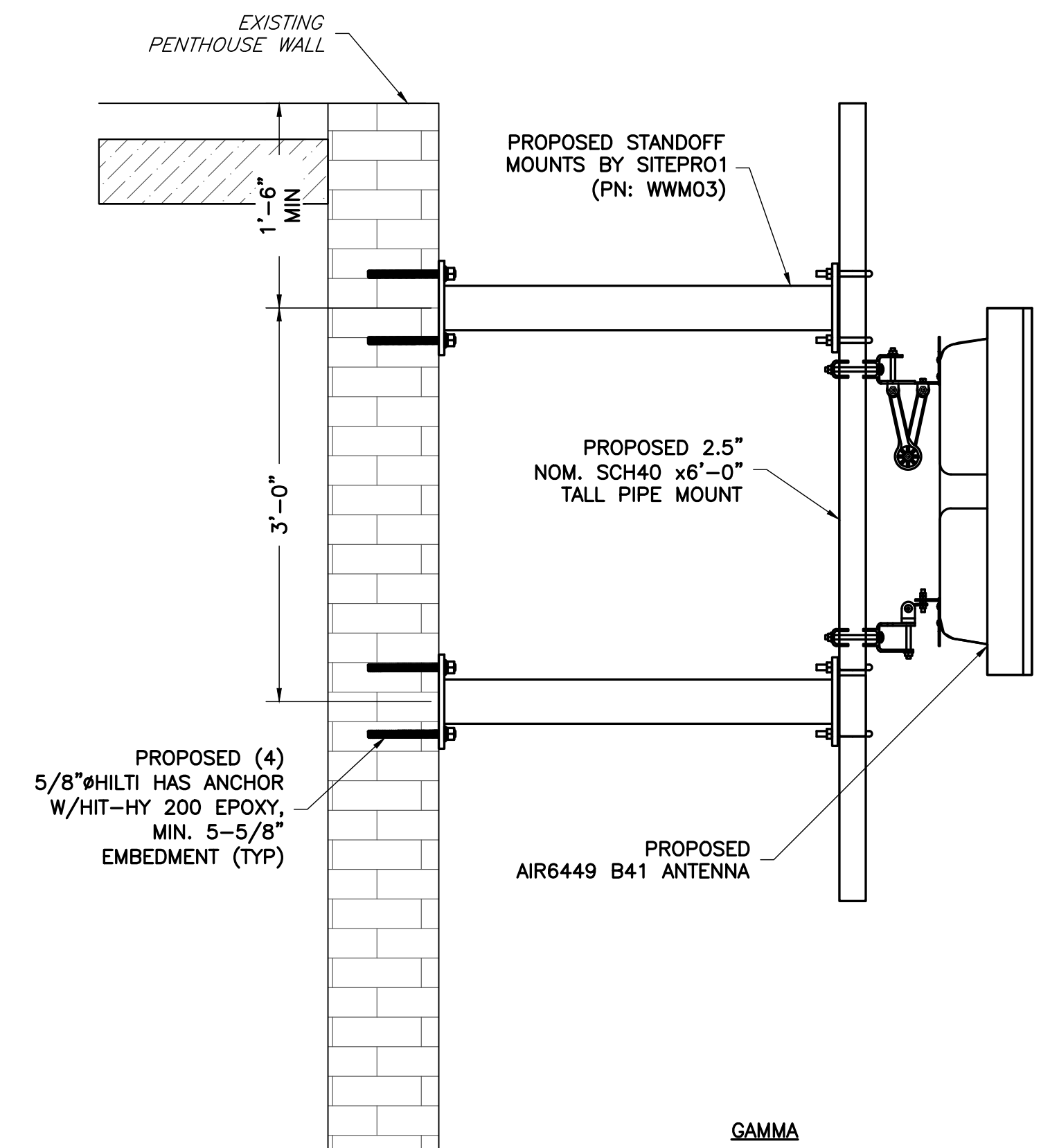
LOCATION: FAIRFAX COUNTY

CONSTRUCTION MATERIAL SELF WEIGHT PER ASCE 7-10

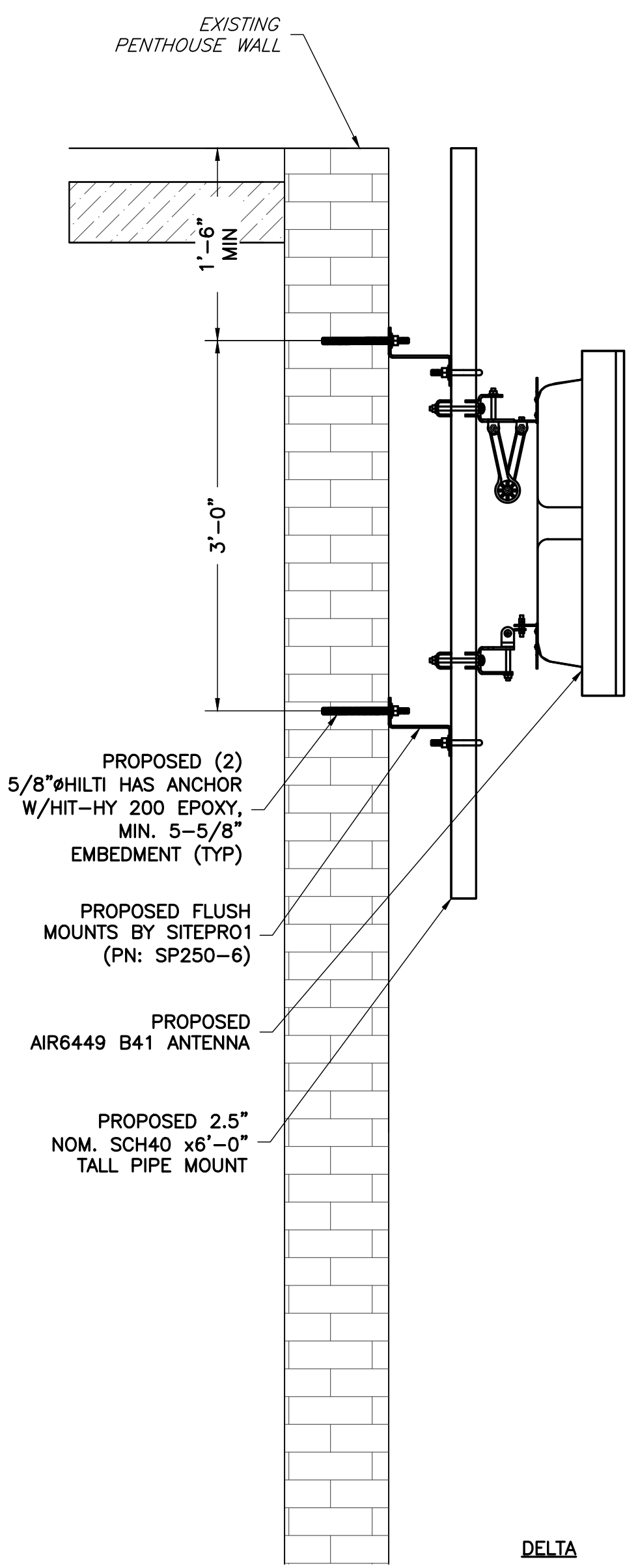
ROOF DEAD LOAD ALLOWANCE: 15 PSF  
 ROOF LIVE LOAD: 30 PSF  
 ROOF SNOW LOAD: 30 PSF  
 ULTIMATE WIND SPEED: 115 MPH  
 OCCUPANCY CATEGORY: II  
 EXPOSURE CATEGORY: B  
 TOPOGRAPHIC CATEGORY: 1

- THE LATEST EDITION OF THE FOLLOWING SPECIFICATIONS SHALL GOVERN:
  - AISC - "ALLOWABLE STRESS DESIGN SPECIFICATION FOR STRUCTURAL STEEL BUILDINGS".
  - AISC - "CODE OF STANDARD PRACTICE FOR STEEL BUILDINGS AND BRIDGES".
  - AWS - "D1.1 STRUCTURAL WELDING CODE - STEEL".
- MATERIAL, UNLESS OTHERWISE NOTED, SHALL CONFORM TO THE FOLLOWING ASTM SPECIFICATIONS
 

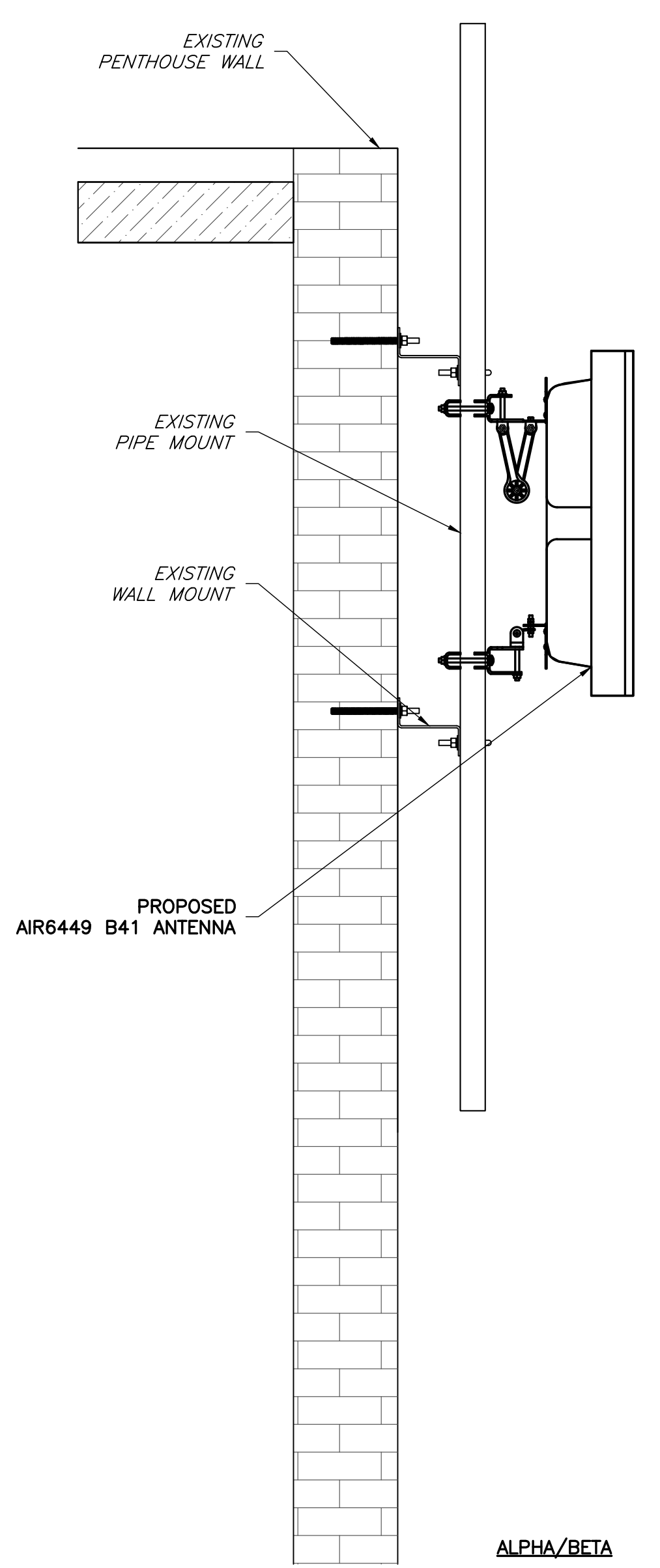
STRUCTURAL WIDE FLANGE & M SHAPES	A992 OR A572 Fy = 50KSI
OTHER STRUCTURAL SHAPES AND PLATES	A36 Fy = 36 KSI
STRUCTURAL TUBING	A500, GRADE B Fy = 46 KSI
HIGH STRENGTH BOLTS	A325
THREADED RODS	A354, GRADE BC
ANCHOR BOLTS	A325 OR A354 BC
PIPE (HANDRAIL)	SCH 40 PIPE
- ALL WELDING SHALL BE IN ACCORDANCE WITH AWS D1.1 USING E70XX ELECTRODES, UNLESS OTHERWISE NOTED PROVIDE CONTINUOUS MINIMUM SIZED FILLET WELDS PER AISC REQUIREMENTS.
- HOLES IN STEEL SHALL BE DRILLED OR PUNCHED. ALL SLOTTED HOLES SHALL BE PROVIDED WITH SMOOTH EDGES. BURNING OF HOLES AND TORCH CUTTING AT THE SITE IS NOT PERMITTED. ALL HOLES IN BEARING PLATES SHALL BE DRILLED.
- ALL STEEL TO BE HOT-DIPPED GALVANIZED AFTER FABRICATION PER ASTM A123.
- EPOXY ANCHORS TO BE INSTALLED PER MANUFACTURER'S SPECIFICATIONS.
- ALL BOLTS SHALL BE TIGHTENED USING TURN-OF-THE-NUT METHOD PER AISC SPECIFICATIONS USING STANDARD HOLES.
- CONTRACTOR TO FIELD VERIFY ALL DIMENSIONS AND FIT PRIOR TO FABRICATION.
- THE FABRICATOR SHALL FURNISH CHECKED SHOP AND ERECTION DRAWINGS TO THE ENGINEER, AND OBTAIN APPROVAL PRIOR TO FABRICATING ANY STRUCTURAL STEEL. SHOP DRAWINGS SHALL CONFORM TO AISC "DETAILING FOR STEEL CONSTRUCTION".



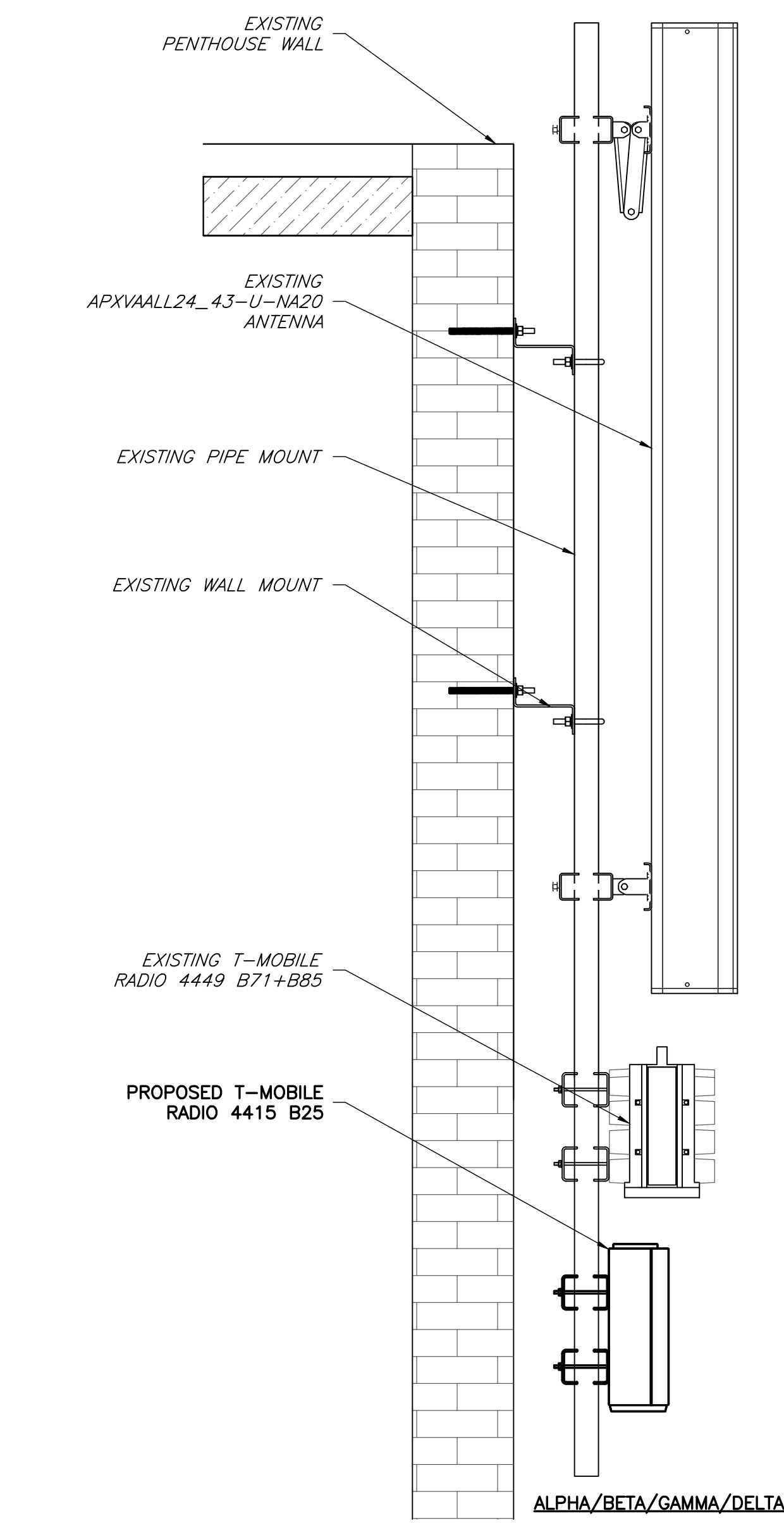
1 ANTENNA MOUNTING DETAIL  
ST-1 NTS



2 ANTENNA MOUNTING DETAIL  
ST-1 NTS



3 ANTENNA MOUNTING DETAIL  
ST-1 NTS



4 RADIO MOUNTING DETAIL  
ST-1 NTS

APPLICANT	 T-MOBILE NORTHEAST LLC  12050 BALTIMORE AVENUE BELTSVILLE, MD 20705 OFFICE: (240) 264-8600 FAX: (240) 264-8610												
ENGINEER	 TOTALLY COMMITTED.  NB+C ENGINEERING SERVICES, LLC. <small>6095 MARSHALEE DRIVE, SUITE 300                  ELK RIDGE, MD 21075                  (410) 712-7092</small>												
SITE INFORMATION	7WAC050A WHITE OAK TOWER 301 MAPLE AVENUE WEST VIENNA, VA 22180 TOWN OF VIENNA												
DESIGN RECORD	<table border="1"> <thead> <tr> <th colspan="4">REVISIONS</th> </tr> <tr> <th>REV</th> <th>DATE</th> <th>DESCRIPTION</th> <th>BY</th> </tr> </thead> <tbody> <tr> <td>0</td> <td>05/13/21</td> <td>FINAL CDs</td> <td>AMM</td> </tr> </tbody> </table>	REVISIONS				REV	DATE	DESCRIPTION	BY	0	05/13/21	FINAL CDs	AMM
REVISIONS													
REV	DATE	DESCRIPTION	BY										
0	05/13/21	FINAL CDs	AMM										
PROFESSIONAL STAMP													
ENGINEER	TRENT TRAVIS SNARR, P.E. VIRGINIA PROFESSIONAL ENGINEER LICENSE #049978												
SHEET TITLE	<b>ANTENNA MOUNTING DETAILS</b>												
SHEET NUMBER	<b>ST-1</b>												