



# DuraCoil™

## Rolling Service Doors

Rugged DuraCoil service doors, with aluminum, steel or stainless steel slats, are made to last. When you want the best, specify DuraCoil. Every DuraCoil door is built for superior performance and includes the following features:



### Curtain Hood

DuraCoil service doors feature a full-width, 24-gauge steel hood to protect your investment. Optional on DuraCoil model LFF.



### Counterbalance System

A smooth-running, torsion-spring operated system is packed into each barrel assembly. Industrial head plates and bearings provide long cycle life.



### Curtain

Each DuraCoil curtain is assembled with durable, heavy-gauge slats in a variety of materials and gauges.



### Guides and End Locks\*

Rugged steel angle guides provide maximum support for curtain slats. Zinc-plated, malleable cast-iron end locks prevent lateral movement of the curtain slats.



### Bottom Bar

Curtain bottoms are structurally reinforced with a minimum of two steel angles for maximum durability. A bottom astragal is included on all doors.



### Security Locks

To keep your building secure, manually-operated DuraCoil doors are equipped with slide locks.

\*DuraCoil model LFF doors are supplied with roll-formed guides and stamped metal end locks.

## DuraCoil™

	Flat Slat	Perforated Flat Slat	Insulated Flat Slat	Large-C Slat	Light-Duty Flat Slat	Small-C Slat
Agricultural Buildings	●	○	●	●	○	○
Cafeteria/Concessions	●	●				
Car Wash/Corrosive Environments	●		●			
Commercial/Multi-Tenant	●	○	●	●	○	●
Fire Station/Ambulance	○		○	○		
High Security	●	●	●	●		○
Large Opening Size	●		●	●		
Mining, Pulp & Paper	●	○	●	●		○
Service Station	●		●	●	○	●
Shopping Mall/Retail	●	○	●	●	○	●
Thermal Environments			●			
Transit Facility/Truck Terminal	●	○	●	●	○	●
Underground Parking	●	●		●		●
Non-insulated Storage	●			●	●	●
Warehouse/Manufacturing	●	○	●	●	○	●

● Best ○ Good ● Applicable



DuraCoil Flat Slat (FF)

### Colors



### Optional Colors



#### 187 ArmorBrite™ Colors

Choose your color! Nearly every Raynor rolling door component (curtain slats, bottom bars, guides, hoods and head plates) can be powder coated in any of 187 colors for an attractive appearance and exceptional durability.

### Slat Style Options

#### Flat Slats (FF)



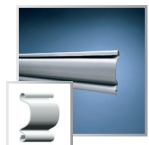
The most architecturally pleasing slat profile, flat slats are ideal when weatherseal is used. Flat slats offer full visual access, multiple glazing options and wind load resistance in a rolling steel door designed to fit in a variety of opening sizes.

#### Large Contour Slats (LC)



Available in virtually unlimited widths, large contour slats are typically specified for larger-sized openings. Designed to withstand heavy use, DuraCoil Large-C Slat doors provide optimum security and wind load resistance.

#### Small Contour Slats (SC)



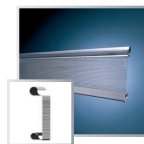
An excellent choice for smaller opening widths, small contour slats are the best value for opening sizes up to 14' x 14'. DuraCoil Small-C Slat doors also offer optimum security and wind load resistance in a rolling steel door built to withstand the demands of high-traffic entryways.

#### Flat Insulated Slats (IF)



Available in several sizes, DuraCoil Insulated Flat Slat doors offer thermal efficiency, combined with superior visual access, glazing options and wind load resistance. Flat Insulated Slats have an R-Value of 6.24.

#### Flat Perforated Slats (FP)



DuraCoil Perforated Flat Slat doors are engineered for applications where airflow, visibility and security are desired while providing maximum ventilation and visibility.

#### Light-Duty Flat Slat (LFF)



The Light-Duty Flat Slat door is ideal for projects with a limited budget, while still providing the security of a rolling steel door.

## Model Options and Upgrades

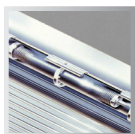
### IECC Compliance Option



Raynor DuraCoil insulated (IF) doors comply with the IECC (International Energy Conservation Code) requirements of a maximum air leakage rate of 1.0 CFM/FT<sup>2</sup>. Raynor's DuraCoil (IF) door outperformed the IECC requirements by achieving an air infiltration rate of .47 CFM/FT<sup>2</sup>,

and a tested U Factor rating of 0.90 Btu/hr-ft<sup>2</sup>-F, both validated by an independent testing agency. This IECC compliance option includes a vinyl guide seal, rubber hood baffle and a rubber header seal.

### High-Cycle Applications



For years of reliable operation in heavy-use applications such as multi-tenant parking facilities, choose high-cycle torsion springs.

### Sound Transmission Class Rating



Sound Transmission Class rating applies to IF (Insulated Flat Slat) model only.

- STC 22 without header seal
- STC 23 with header seal

### Head Plate Cover



Head plate covers are available for an attractive, finished appearance and help to protect your investment by keeping out dust and grime.

### Vision Panels



For light transmission and visibility, choose 4" x 1" acrylic vision slots for flat and insulated flat curtain slats. Fenestrated curtains with open 4" x 1" slots are also available for flat slat curtains only.

### Pedestrian Doors



Pedestrian doors are designed for convenient entry and to help minimize energy loss.

## Energy-Saving Options



### 1. Hood Weatherseal

A reinforced neoprene sheet rests on the curtain to minimize air infiltration. A header brush seal is also available.

### 2. Vinyl Guide Seal

A vinyl extrusion decreases energy costs and reduces air infiltration by sealing the side of the door when closed.

### 3. Brush Guide Seal

A brush-type seal increases the energy efficiency of curved slat doors.

Model	Guides	Slat Profile	Slat Material (Thickness)	Maximum Width	Color/Finish
FF	Steel Angles	Flat	Steel 24, 22, 20, 18 gauge	40'	Gray, Tan, White or ArmorBrite Powder Coated, Galvanized finish
			Stainless Steel 22, 20 gauge	30'	#4 Finish
AF	Steel Angles	Flat	Aluminum 04, 05	30'	Clear Anodize or Bronze Anodize
FP	Steel Angles	Perforated Flat	Steel 22, 20 gauge	30'	Gray or ArmorBrite Powder Coated
AP	Steel Angles	Perforated Flat	Aluminum 04, 05	30'	Clear Anodize or Bronze Anodize
IF	Steel Angles	Insulated Flat	Stainless Steel 22, 20 gauge	32'	#4 Finish
			Steel 24, 22, 20, 18 gauge	40'	Gray, Tan, White or ArmorBrite Powder Coated, Galvanized Finish White Painted (24, 22, 20 gauge)
AI	Steel Angles	Insulated Flat	Aluminum 04, 05	30'	Clear Anodize or Bronze Anodize
SC	Steel Angles	Small Curve	Steel 22, 20 gauge	16'	Gray
LC	Steel Angles	Large Curve	Steel 22, 20, 18 gauge	40'	Gray
LFF	Roll-Formed	Light-Duty Flat	Steel 24 gauge	14'	Gray or Tan Painted

NOTE: Contact factory for special sizes.

LIMITED WARRANTY: DuraCoil service doors carry a 1-year limited warranty. See your local Raynor Dealer for complete details.

## Commercial Operators

Raynor ControlHoist™ 2.0 (with solid state logic board control) operator is available in a variety of motor, voltage, and phase combinations for any commercial or industrial application. Contact your local Raynor Authorized Dealer to select the operator and accessories that are suited for your door's size and usage.



ControlHoist 2.0

## Raynor Door Options

Raynor also offers a full line of sectional, rolling, fire, high performance and traffic doors, as well as, security grilles. See your Raynor Dealer or visit [www.raynor.com](http://www.raynor.com) for more information.



FireCoil™



RapidCoil™, RC300



DuraShutter™

# Professional Installation and Service

## Depend on your Raynor Dealer

When you select Raynor, you're not just getting a superior garage door - you're also getting professional garage door installation and service expertise.

Every Raynor garage door is installed by a trained Raynor professional, and that means added benefits for you. First, you won't have to deal with it yourself. Second, because it's done right the first time, your door will deliver performance and reliability from the day it's installed. Your technician will check your door for everything from safety to performance and appearance. Trust your Raynor garage door to someone who knows it better than anyone else, your professional Raynor Dealer.



P.O. Box 448, 1101 East River Rd.  
Dixon, IL 61021-0448  
1-800-4-RAYNOR (472-9667)

Exclusively Distributed by:

FIELD CHECK AND VERIFY ALL DETAILS AND DIMENSIONS. JAMBS, HEADER, JAMB EXTENSIONS BY OTHER THAN DOOR CONTRACTOR. THIS DRAWING WAS AS COMPLETE AND FACTUAL AS POSSIBLE AT THE TIME IT WAS PRINTED. WE DO HOWEVER, RESERVE THE RIGHT TO MAKE PRODUCT CHANGES IN SPECIFICATIONS AND AVAILABILITY WITHOUT NOTICE.

DRAWING(S) MUST BE APPROVED AND RETURNED TO DOOR DISTRIBUTOR AND FORWARDED TO RAYNOR GARAGE DOORS BEFORE ORDER WILL BE ENTERED INTO PRODUCTION. SHOP DRAWING FAX NUMBER 800/323-7896.

JOB NAME: Pioneer

LOCATION:

DISTRIBUTOR: PIONEER POLE BLDGS INC - DBA F & L DOORS

CONTRACTOR:

ARCHITECT:

CHECKED BY:

DATE: 7/15/2025

SHEET  
1 OF 2

DRAWING  
NUMBER

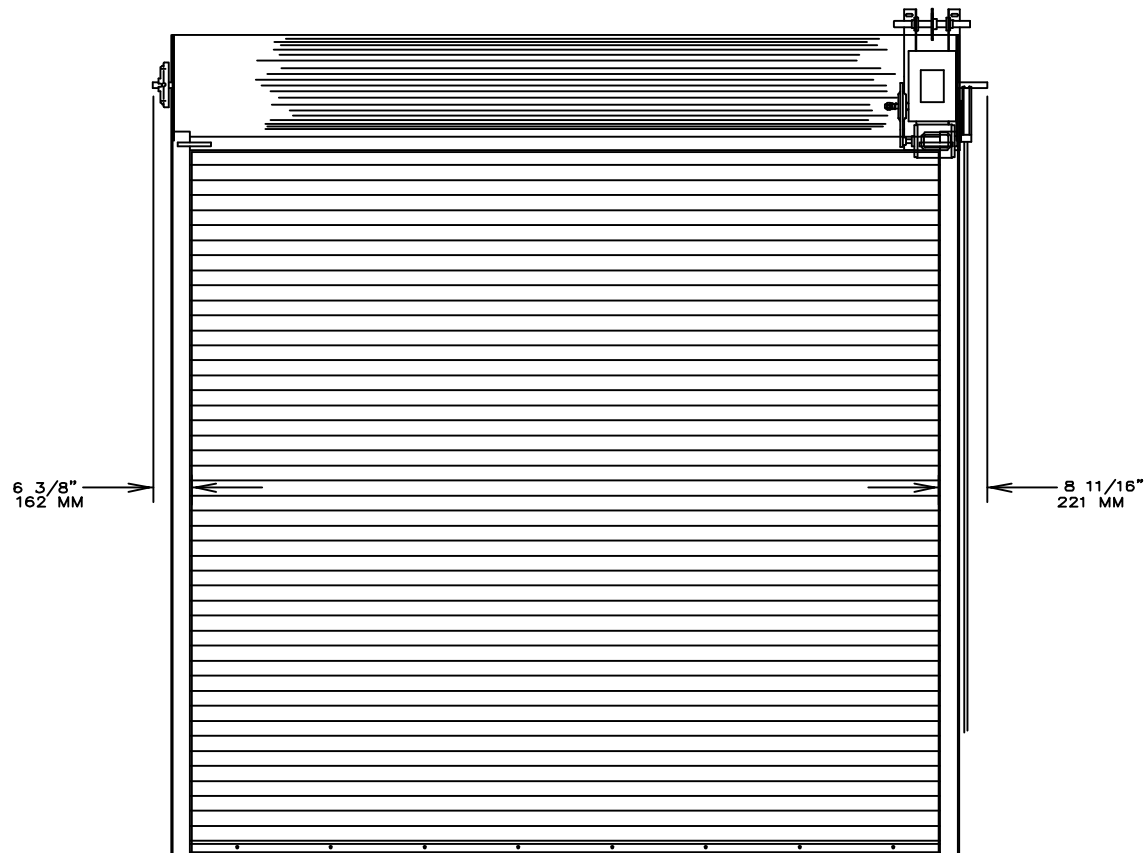
2709310 A

DOOR TAG



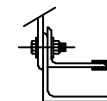
PROPOSAL  
DRAWING

RAYNOR ORDER NUMBER	QTY	OPENING		MODEL	GAUGE	MOUNT TYPE	OPER.	DRIVE SIDE	JAMB TYPE	GUIDE	LOCK
		WIDTH	HEIGHT								
	3	16' 0"	12' 0"	IF	22	N	40	RH	W	E	
		4876.8MM	3657.6MM								

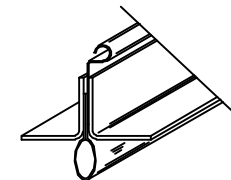


"ELEVATION"

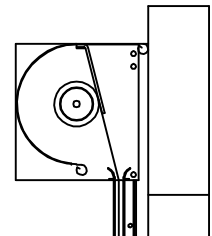
- 1) Doors shall be rolling steel model Duracoil "Standard" (standard service door) as manufactured by Raynor Garage Doors.
- 2) Door mount type (N) interior face mounted.
- 3) Guides - minimum 3/16" (4.8 mm) steel angles and provided with removable curtain stops. Guide assembly shall have a powdercoat black finish (unless noted).
- 4) Headplates - 3/16" (4.8 mm) minimum steel plate, attached to the guide assembly. The drive headplate shall be fitted with a heavy-duty self-aligning precision bearing. Headplates shall have a coat of primer finish (unless noted).
- 5) Barrel - structural steel pipe, minimum 4 1/2" (114.3 mm) O.D. x .120" (3 mm) wall thickness and designed to limit maximum deflection, Under load, to .03" (0.76 mm) per foot of span.
- 6) Spring Counterbalance - curtain shall be counterbalanced by means of oil tempered; helical torsion springs, greased and mounted on a single continuous steel shaft. Springs shall be compression spring design to facilitate any maintenance
- 7) Curtain - interlocking slats roll formed from hot-dipped galvanized (G-90) steel per ASTM A-653. Slat shall be filled with polyurethane foam board insulation and fitted with a 24 gauge galvanized steel back cover (unless noted). Slat and back covers shall have a Baked on finish coat of gray polyester paint (unless noted). Insulated flat slats shall have an R-value of 6.24 (calculated characteristics of core material). Bottom bar shall be two steel angles, with a single-contact type astragal. Bottom bar angles shall be galvanized or have a coat of primer finish(unless notes).
- 8) Hood - shall be 24 gauge hot-dipped galvanized steel with rolled edges to provide rigidity. Hood shall have a finish coat of gray polyester paint (unless noted).
- 9) Locking- Omitted.
- 10) Wind Load - 20 lbs./sq. ft. standard. Unless otherwise noted.



"GUIDE VINYL SEAL"



"EPDM RUBBER  
FLOOR SEAL"



"RUBBER HOOD BAFFLE"

FIELD CHECK AND VERIFY ALL DETAILS AND DIMENSIONS. JAMBS, HEADER, JAMB EXTENSIONS BY OTHER THAN DOOR CONTRACTOR. THIS DRAWING WAS AS COMPLETE AND FACTUAL AS POSSIBLE AT THE TIME IT WAS PRINTED. WE DO HOWEVER, RESERVE THE RIGHT TO MAKE PRODUCT CHANGES IN SPECIFICATIONS AND AVAILABILITY WITHOUT NOTICE.

JOB NAME: Pioneer

LOCATION:

DISTRIBUTOR: PIONEER POLE BLDGS INC - DBA F & L DOORS

CONTRACTOR:

ARCHITECT:

CHECKED BY:

DATE: 7/15/2025

SHEET  
2 OF 2

DRAWING  
NUMBER

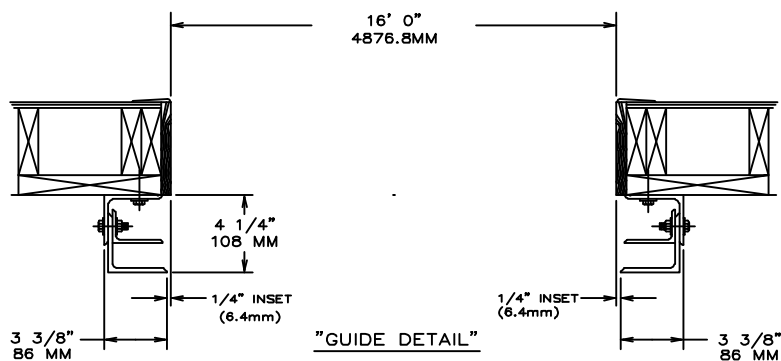
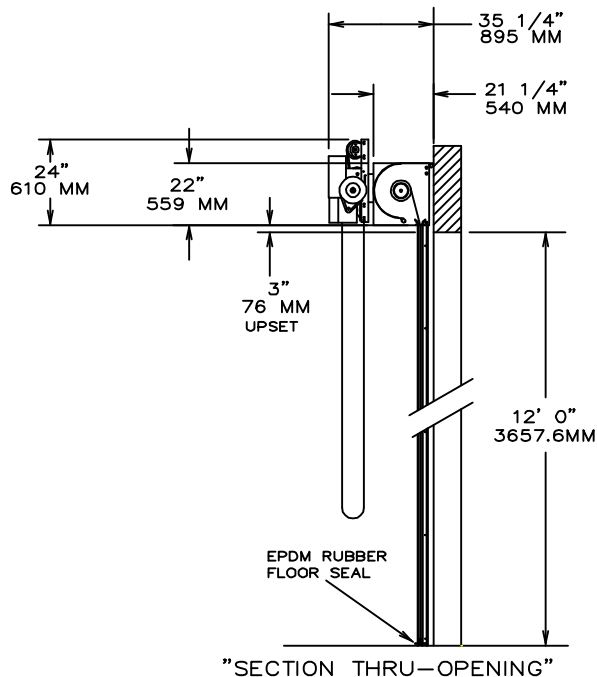
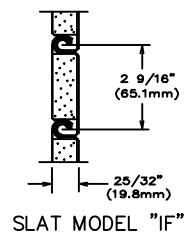
2709310 A

RAYNOR

PROPOSAL  
DRAWING

RAYNOR ORDER NUMBER	QTY	OPENING		MODEL	GAUGE	MOUNT TYPE	OPER.	DRIVE SIDE	JAMB TYPE	GUIDE	LOCK
		WIDTH	HEIGHT								
	3	16' 0"	12' 0"	IF	22	N	40	RH	W	E	
		4876.8MM	3657.6MM								

DOOR TAG



- 1) IF Operator is mounted less than 8' 0" above finished floor, UL requires a guard or cover. Contact factory.
- 2) ControlHoist - Standard model "CSH" - 411.  
Jack-shaft type electric operator, solid state logic, with (1) three button control station and auxiliary hand chain. Transmission to be belt-drive with roller chain/sprocket reduction.  
H.P.: 3/4 Voltage:115 Phase:SINGLE
- 3) Optional electro-magnetic brake required.
- 4) Control Station - Three button Open/Close/Stop (NEMA 1) required.
- 5) Reversing Device - Monitored Photo-Electric Eyes, thru beam type with a range of 45 feet (NEMA 4) required.

Architectural Note:  
Raynor Garage Doors neither warrants nor implies any durability of the finish coatings on our rolling products. It is the inherent nature of a rolling product to create wear on the contacting surfaces as the curtain coils and uncoils about itself. This wear is expected and is accelerated by the environment in which the product is used and the frequency of use, whether manual or motor operated. Raynor Garage Doors consistently uses high quality coatings and other methods to help reduce this inevitable wear