

ACE Hardware
264 Cedar Lane
Vienna, VA 22180


Sq. Ft. Signage:
58.46

Sq. Ft. Allowance:

Building-mounted sign area is that area within a single continuous rectilinear perimeter of not more than eight straight lines intersecting at right angles, that encloses the outer limits of all words, representations, symbols, and pictorial elements, together with all material, color, and lighting forming an integral part of the display or used to differentiate the sign from the background against which it is placed.

Signs are limited to one and one-half square feet of sign area or each linear foot of building frontage. No single sign may exceed 200 square feet in area



Claude Ballbe - BH	claude@signsunlimitedusa.com	Approval Signature:	Please check all spelling, quantities, colors, and materials before approving	<div>SIGNS:UNLIMITED communicate your identity</div> <div>6801 Mount Hermon Church Rd, Building C Durham, NC 27705</div>
919-552-8689	www.signsunlimitedusa.com			
06.26.25	<div> Underwriters Laboratories Inc.® UL File #E225670</div>	Notes:	<div>NEED SURVEY TO CONFIRM SCALE & MATERIALS PRIOR TO MANUFACTURE</div>	
©COPYRIGHT NOTICE: Signs Unlimited expressly reserves its common law copyright and other property rights in these drawings. These drawings are not to be reproduced, changed or copied in any form or manner without written expressed permission from Signs Unlimited or its affiliates.				

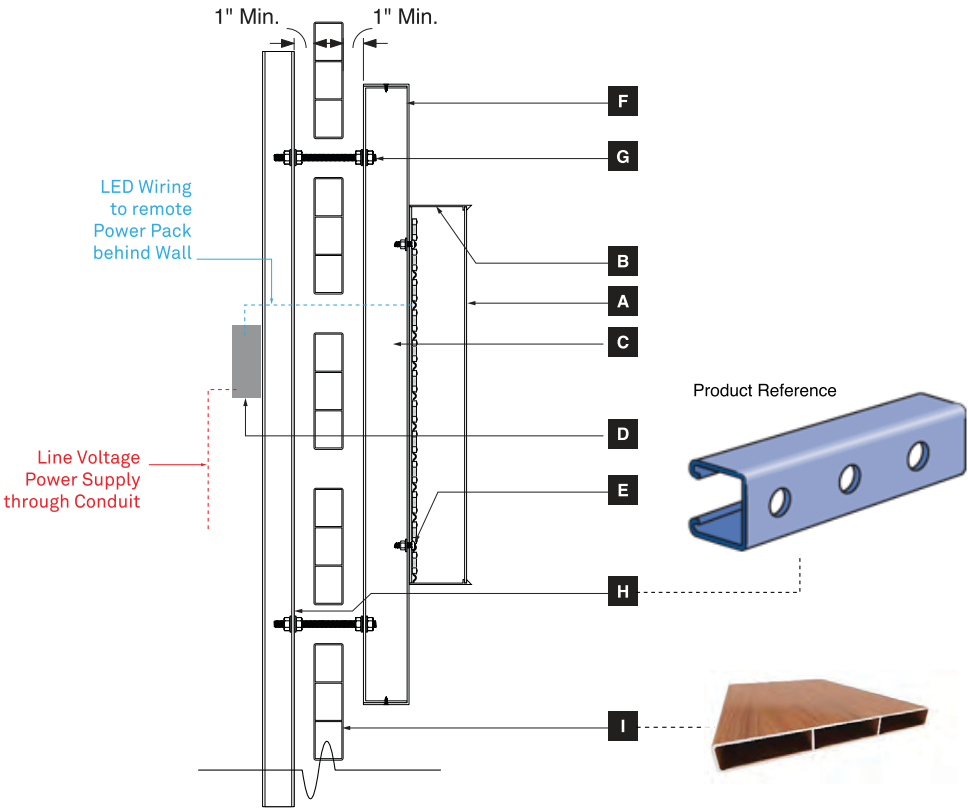
ACE Hardware
264 Cedar Lane
Vienna, VA 22180

Channel Letters - Stud-Mounted on Aluminum Backer Pan



LED SPECS:
COLOR: Warm White
PART#: HLED-P2072WWARM
COLOR TEMP: 3000~3300K
LUMENS: 70 lm/mod (140 lm/ft.)
BRAND: HanleyLED

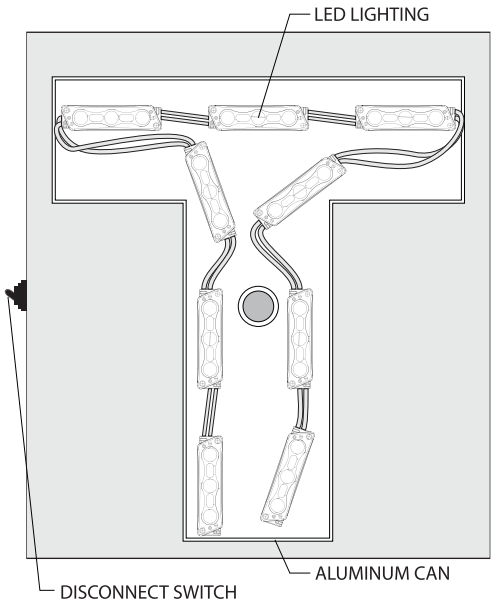
SIDE VIEW



- A** Fabricated Letter - Acrylic Letter Face
3/16" Translucent White Acrylic
- B** Fabricated Letter - Can
3"D .090" Bent Aluminum Return Profile w/
Integrated Acrylic Letter Face Retainer
w/ 1/8" Thk. ACM Letter Back
- C** Fabricated Letter - Illumination
L.E.D. Illumination - Product Per Manufacturer Spec.
4000k "Cool White" Temperature
- D** Power Pack
Remote Power Pack, located behind wall surface
Final Product Spec. T.B.D. per Manufacturer Recom.
- E** Letter Mounting
S.S. Bolt w/ Nut + Washer to secure Channel Letter
to Tenant Sign Panel Face
- F** Tenant Sign Panel
2"D Fabricated Aluminum Pan Construction w/
Flathead + Countersunk fasteners on return edge to
secure Sign Panel Face to Backer
- G** Anchor Fastener
1/2"-20 S.S. All-Thread Support Rod from Unistrut
to secure Tenant Sign Panel Backer w/ S.S. Hex Nut,
MMC#94804A345 and Washers, MMC#90107A033
Anchor Fasteners can move to different Unistrut Locations
for Sign Panel Re-location without affecting Sign Band
- H** Unistrut Supports
P1000HS - 1-5/8" x 1-5/8", 12 Gage:
9/16" Dia. Round Holes @ 1.875" O.C.
Powdercoat Black to Match Sign Band Support Structure
Install at 48" O.C. Vertically behind Sign Band
w/ 1" Offset
- I** Sign Band
Extruded Aluminum "Slat" Profiles by Knotwood
w/ "Woodgrain" Pattern - Final Color Spec. T.B.D.


NOTE *
Final survey should be conducted by
Sign Contractor to verify conditions prior to
fabrication / install.

FRONT VIEW



This sign and its attachments are designed to meet all the requirements of IBC 2015 Sections H105.3 & H105.4.

This sign and its attachments are designed to withstand 115 mph winds.

Claude Ballbe	claude@signsunlimitedusa.com	Approval Signature:	Please check all spelling, quantities, colors, and materials before approving	<div><div>SIGNS:UNLIMITED</div><div>communicate your identity</div><div>6801 Mount Hermon Church Rd, Building C Durham, NC 27705</div></div>
919-552-8689	www.signsunlimitedusa.com			
4/26/22	<div><div></div><div>Underwriters Laboratories Inc.® UL File #E225670</div></div>	Notes:		
©COPYRIGHT NOTICE: Signs Unlimited expressly reserves its common law copyright and other property rights in these drawings. These drawings are not to be reproduced, changed or copied in any form or manner without written expressed permission from Signs Unlimited or its affiliates.				

PRODUCTION TO MATCH EXISTING SIGNAGE

Quantity:

1

Material:

.125 Aluminum

Color:

TBD

Logo to be Matte Finish

Cabinet to be Satin Finish

Face:

Applied Vinyl

Vinyl Color:



Description: Caviar
Paint: Matthews Acrylic
Color: Match SW 6990 Caviar



Description: Turkish Coffee
Paint: Matthews Acrylic
Color: Match SW 6076 Turkish Coffee

Mounting:

Match Existing

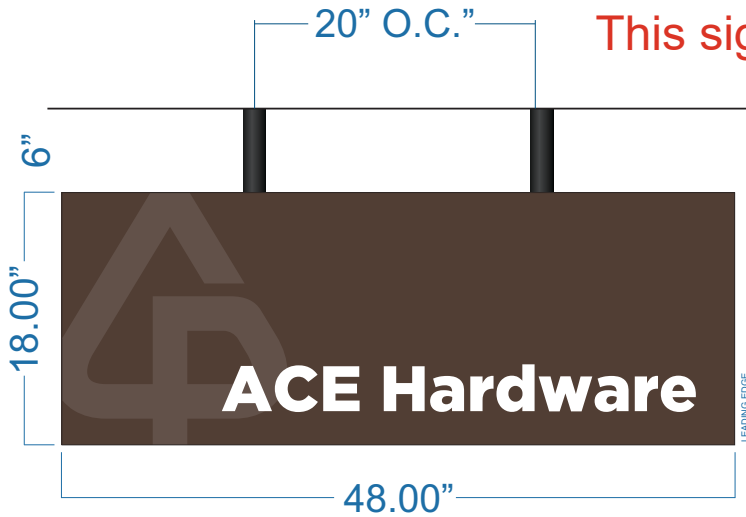
Sq. Ft. Signage:

6.00

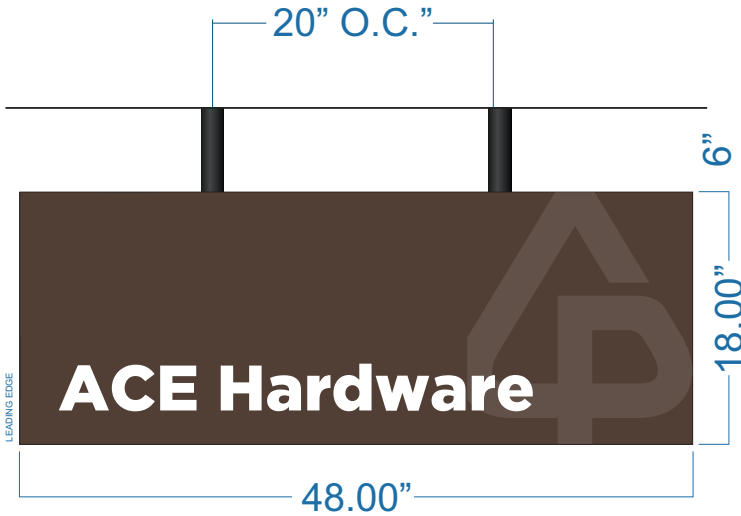
Sq. Ft. Allowance:

TBD

This sign meets the master sign plan requirements

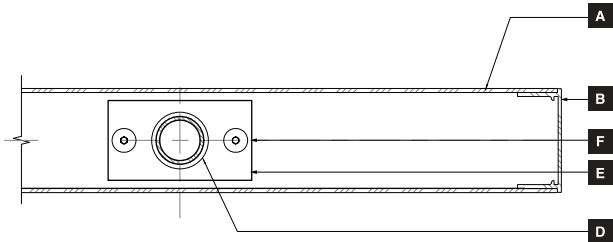


LEFT SIDE

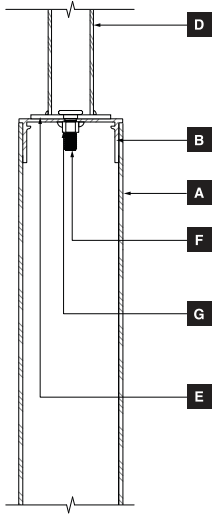


RIGHT SIDE

Scaling 3/4" = 1'



C Section Detail - Plan View - Typical



D Section Detail - Side View - Typical

- A** Sign Panel
3mm Composite Aluminum. Bonded to Sign Frame
Paint All Surfaces - P4
- B** Sign Frame
SignComp #1270 Series 3 Bleed Body. Mitre-Cut +
Welded at interior corners.
Paint All Surfaces - P4
- C** Sign Copy - Typical
Cut + Applied Opaque Vinyl Graphics
- D** Mounting Pipe
1 1/2" OD 6061-T6 Aluminum Mounting Pipe
Continuous welded connection to Alum Mounting Plate
Paint All Surfaces - P1
- E** Mounting Plate
4 1/2" x 2 1/2" x 1/8" Thk. Welded Alum. Mounting Plate
- F** Fastener
Ultra-Low-Profile Socket Head Screw, 3/8" -16 Thread, 1" L
MMC#91223A231
- G** Hex Nut
Aluminum Hex Nut, 3/8" -16 Thread, Welded to Sign Frame
MMC#90670A031

NOTE *
Final survey should be conducted by
Sign Contractor to verify conditions prior to
fabrication / install.

Claude Ballbe - BH	claudio@signsunlimitedusa.com
919-552-8689	www.signsunlimitedusa.com
07.14.25	Underwriters Laboratories Inc.® UL File #E225670

Approval Signature:

Please check all spelling, quantities,
colors, and materials before approving

Notes: **NEED SURVEY TO CONFIRM SCALE & MATERIALS PRIOR TO MANUFACTURE**

SIGNS UNLIMITED
communicate your identity
6801 Mount Hermon Church Rd, Building C
Durham, NC 27705

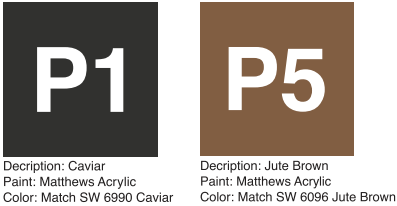
ACE Hardware
264 Cedar Lane
Vienna, VA 22180

Rout-out Push Thru Monument Panel

This sign meets the master sign plan requirements



- Quantity:** 1
- Letter Material:** 1/2" Clear Acrylic w/ Applied Vinyl
- Backer Material:** 1" Painted Aluminum Pan
- Mounting:** Attached to Existing Cabinets
- Sq. Ft. Signage:** 7.00
- Sq. Ft. Allowance:** TBD



- A** Fabricated Letter - Acrylic Letter Face
3/16" #2406 Translucent White Acrylic
- B** Fabricated Letter - Can
5"D .090" Bent Aluminum Return Profile w/
Integrated Acrylic Letter Face Retainer
w/ 1/8" Thk. ACM Letter Back
- C** Tenant Panel Cabinet
Fabricated Aluminum Cabinet Construction w/ custom
routed face + Fabricated Reveal between Panels
Paint P1 (Cabinet) / Paint P5 (Reveal)
- D** Tenant Sign Copy
3/8" Clear Acrylic w/ 1/8" routed flange + 1/8" visible
return at cabinet face w/ Applied Translucent Vinyl
- E** Outer Cabinet Frame
Fabricated Aluminum Cladding over Existing Sturcture
Paint P1
- F** Central Cabinet Cladding
Extruded Aluminum "Slat" Profiles by Knotwood
w/ Hickory "Woodgrain" Pattern
- I** Ground Treatment
Low-Lying Plantings at base of sign
by Landscape Contractor

NOTE *
Final survey should be conducted by
Sign Contractor to verify conditions prior to
fabrication / install.



Claude Ballbe - BH	claudio@signsunlimitedusa.com
919-552-8689	www.signsunlimitedusa.com
07.14.25	Underwriters Laboratories Inc.® UL File #E225670

Approval Signature:

Please check all spelling, quantities,
colors, and materials before approving

Notes: **NEED SURVEY TO CONFIRM SCALE PRIOR TO MANUFACTURE**

SIGNS:UNLIMITED
communicate your identity

6801 Mount Hermon Church Rd, Building C
Durham, NC 27705

MAIN SIGNAGE PROPOSAL

PLEASE REFERENCE 'EXHIBIT A'

ACE SIGN MEASUREMENT

7100.7 - A.I.a :

Building-mounted sign area is that area within a single continuous rectilinear perimeter of not more than eight straight lines intersecting at right angles, that encloses the outer limits of all words, representations, symbols, and pictorial elements, together with all material, color, and lighting forming an integral part of the display or used to differentiate the sign from the background against which it is placed.

THE ACE HARDWARE PROPOSED SIGNAGE IS MEASURED WITHIN A SINGLE CONTINUOUS RECTILINEAR PERIMETER WITH 4 LINES, ENCLOSING THE LIMITS OF ALL WORDS AND SYMBOLS.

7101.3 - A.I.A :

Signs are limited to one and one-half square feet of sign area for each linear foot of building frontage. No single sign may exceed 200 square feet in area.

WITH THE LINEAR FOOT OF ACE HARDWARE'S BUILDING FRONTAGE MEASURING 66'-5", THE SQUARE FOOTAGE ALLOWANCE TOTAL IS 99.75 SQFT. ACE HARDWARE'S PROPOSED WALL SIGNAGE IS 58.46SQFT, WHICH IS 41.29SQFT UNDER THE TOTAL ALLOWED.

ACE FRONTAGE CALCULATION:

7101.3 - A.I.C (3):

On buildings with more than a single tenant where each tenant has its own outside entrance, building frontage for each tenant is the wall that contains the tenant's main public entrance, as determined by the Zoning Administrator.

ACE HARDWARE'S 66'-5" BUILDING FRONTAGE IS MEASURED ON THE SAME FACADE AS THE MAIN PUBLIC ENTRANCE.

ACE SIGN LOCATION:

7101.3 - B.I.A:

Building-mounted signs may be located anywhere on the surface of a wall but no part of the sign may extend above or beyond the perimeter of a wall. When the sign is erected at a right angle to the wall, it must not extend into the minimum setback and must not be located closer than two feet to any street line.

ACE HARDWARE'S PROPOSED SIGNAGE DOES NOT EXTEND ABOVE THE SIGN BAND, INTERFERE WITH NEIGHBORING TENANT'S LEASE SPACES AND DOES NOT EXTEND INTO THE MINIMUM SETBACK. THE PROPOSED SIGN IS NOT WITHIN TWO FEET OF ANY STREET LINE.