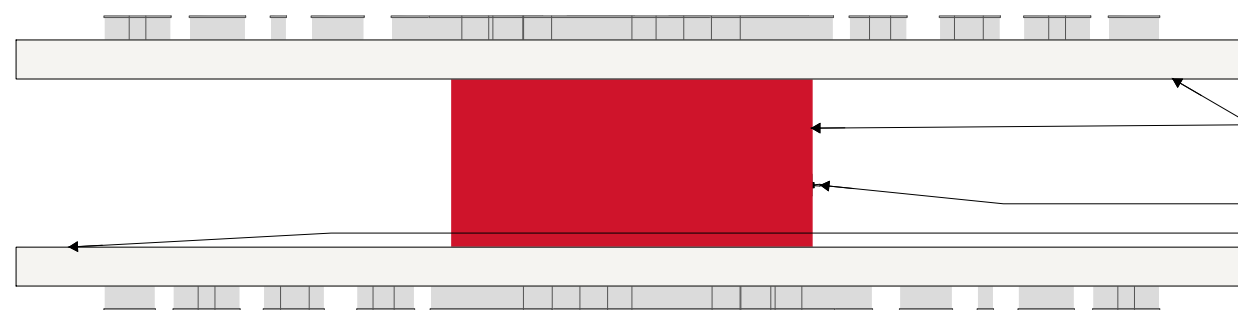


General Sign Specifications

- Interior Exterior
- Single Faced Double Faced
- Non-Illuminated
- Illuminated
- 120 Volts 2.0 Amps(+/-)
- Location _____
- Windspeed 115 MPH / IBC 2012

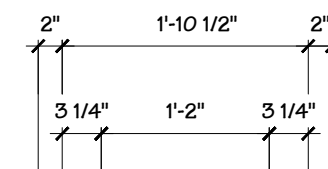
NOTES:
1.) PAINT INSIDE OF LETTERS W/ SPRAY-LAT STAR BRITE WHITE LIGHT ENHANCEMENT PAINT.
2.) PAINT ALL EXPOSED SCREW HEADS TO MATCH ADJACENT SURFACE.



ALUM. CENTER CABINET AND REAR OF SIGN FACE PAINTED MAP #MP49696 'BOA RED' SEMI-GLOSS

DISCONNECT SWITCH
U.L. LABEL ON LOWER CORNER OF CLADDING BEHIND SIGN FACE

FLAGScape TO BE FABRICATED ALUM. CHANNEL LOGO W/ SURFACE APPLIED 3M TRANSLUCENT VINYL:
- #3630-2413 'RED' OR
- #3630-8530 'BLUE'
- ALL LETTERS TO HAVE 3M #3660M MATTE OVERLAMINATE AND BRUSHED ALUM. RETURNS



DISCONNECT SWITCH MOUNTED ON STATIONARY CLADDING
REMOVABLE CLADDING PANEL

ALUM. CABINET IS MATTHEWS PAINT "GARBO SILVER" #MPO2650R14405 LVG W/ GLOSS FINISH W/ CLEAR GLOSS COAT ON ALL SURFACES

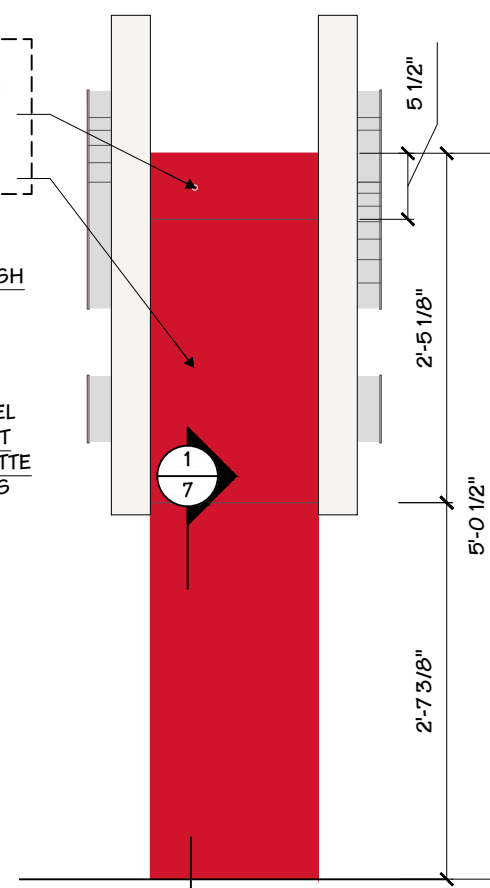
WORDMARK TO BE FABRICATED ALUM. CHANNEL LETTER W/ SURFACE APPLIED 3M TRANSLUCENT VINYL #3630-8530 'BLUE' W/ 3M #3660M MATTE OVERLAMINATE AND BRUSHED ALUM. RETURNS

PRODUCT LABEL

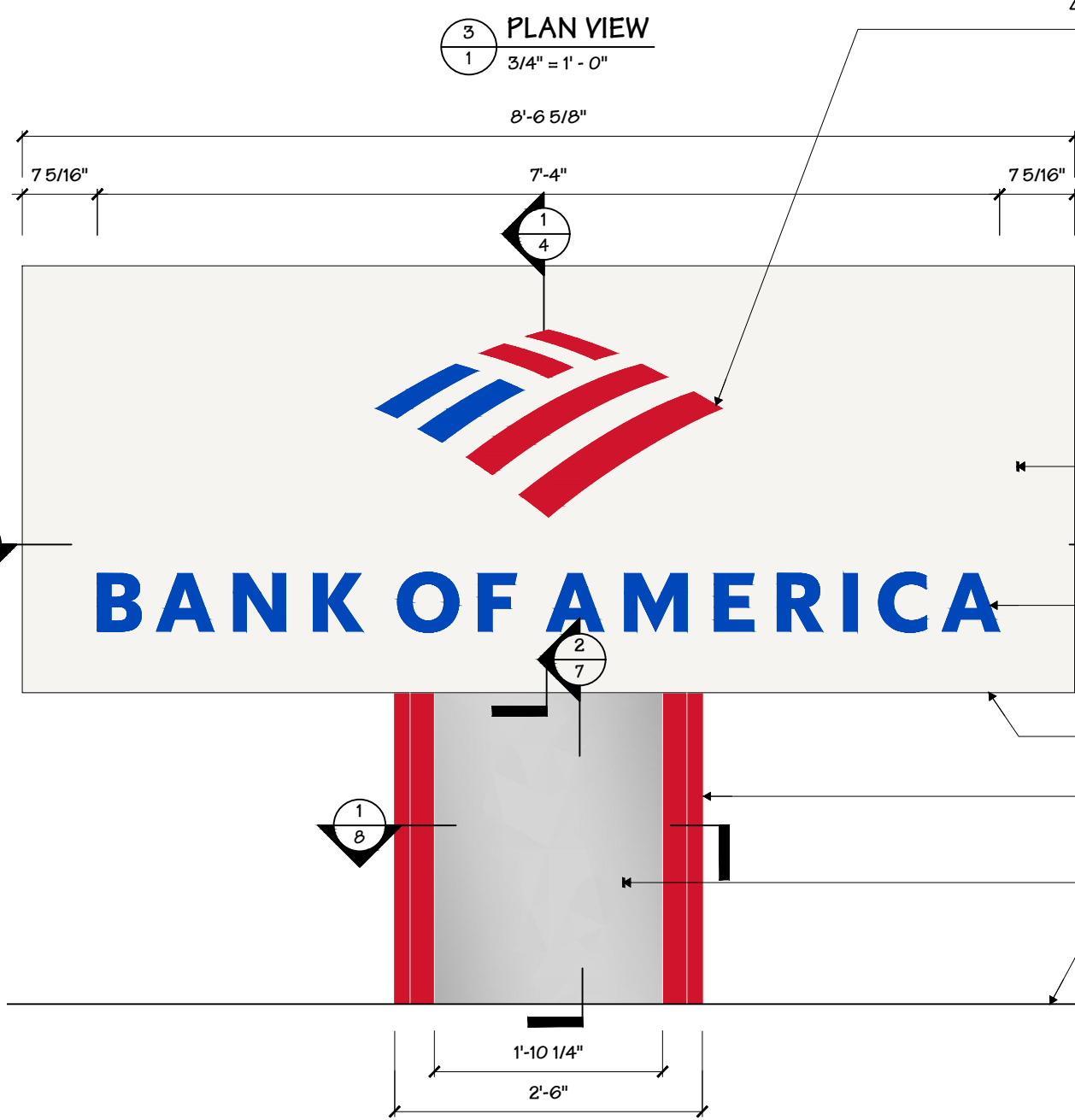
BRAKE FORMED ALUM. CLADDING END CAPS PAINTED MAP #MP49696 'BOA RED'

4MM ACM CLADDING W/ NATURAL BRUSHED FINISH 50

EXISTING GRADE



2 SIDE VIEW
1 3/4" = 1' - 0"



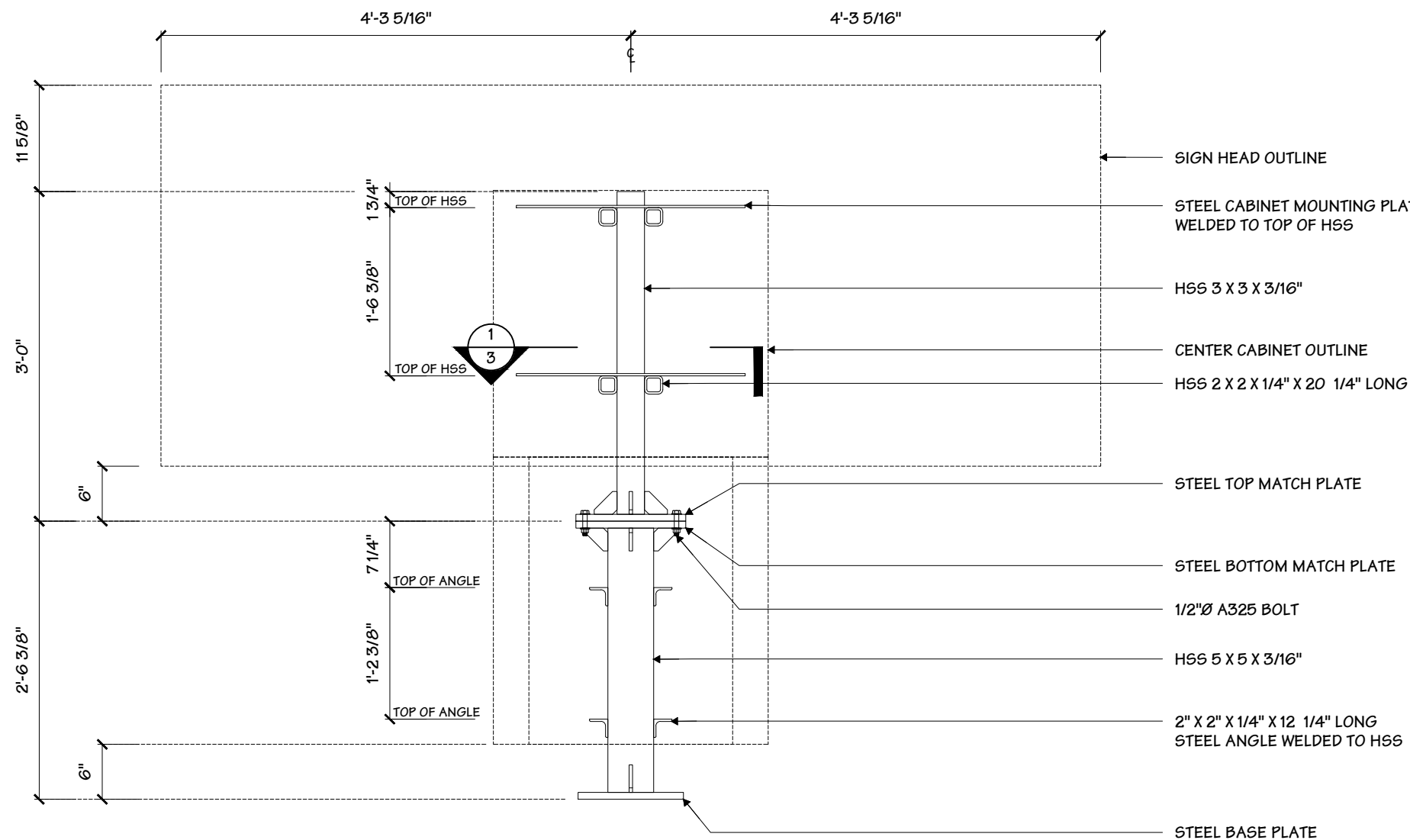
1 FRONT ELEVATION
1 3/4" = 1' - 0"

Change	Date	By	Revisions
1	05.15.19	DLR	CHANGED RED VINYL CALLOUT, MOVED DISCONNECT SWITCH & U.L. LABEL UPDATED LENS ROUTING INSTRUCTIONS
2	08.29.19	TLW	UPDATED LED LAYOUT
3	02.06.20	DLR	UPDATED CLADDING DUAL LOCK
4	03.16.20	DLR	ADDEDD CAISSON FOUNDATION
5	10.29.20	INW	LIGHTING UPDATE TO ULTRA MINIS

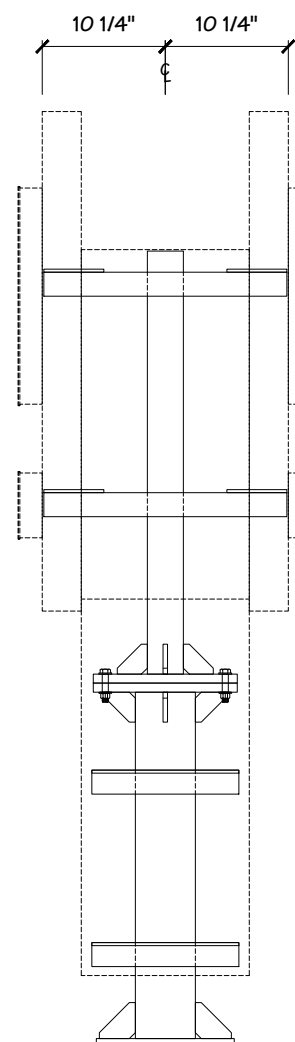
This document is the sole property of Architectural Graphics, Inc., and all design, manufacturing, reproduction, use and sale rights regarding the same are expressly forbidden. It is submitted under a confidential relationship, for a special purpose, and the recipient, by accepting this document assumes custody and agrees that this document will not be copied or reproduced in whole or in part, nor its contents revealed in any manner or to any person except for the purpose for which it was tendered, nor any special features peculiar to this design be incorporated in other projects.

General Sign Specifications

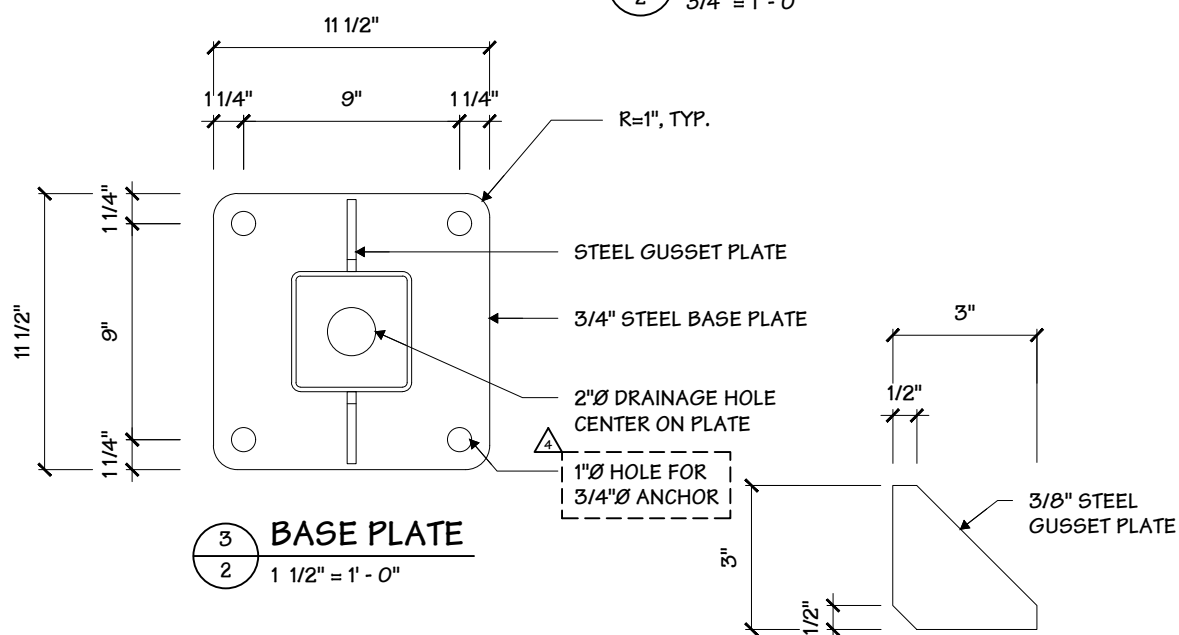
- Interior Exterior
- Single Faced Double Faced
- Non-Illuminated
- Illuminated
- 120 Volts 2.0 Amps(+/-)**
- Location _____
- Windspeed **115 MPH / IBC 2012**



1 STRUCTURAL STEEL FRONT ELEVATION
2 3/4" = 1' - 0"

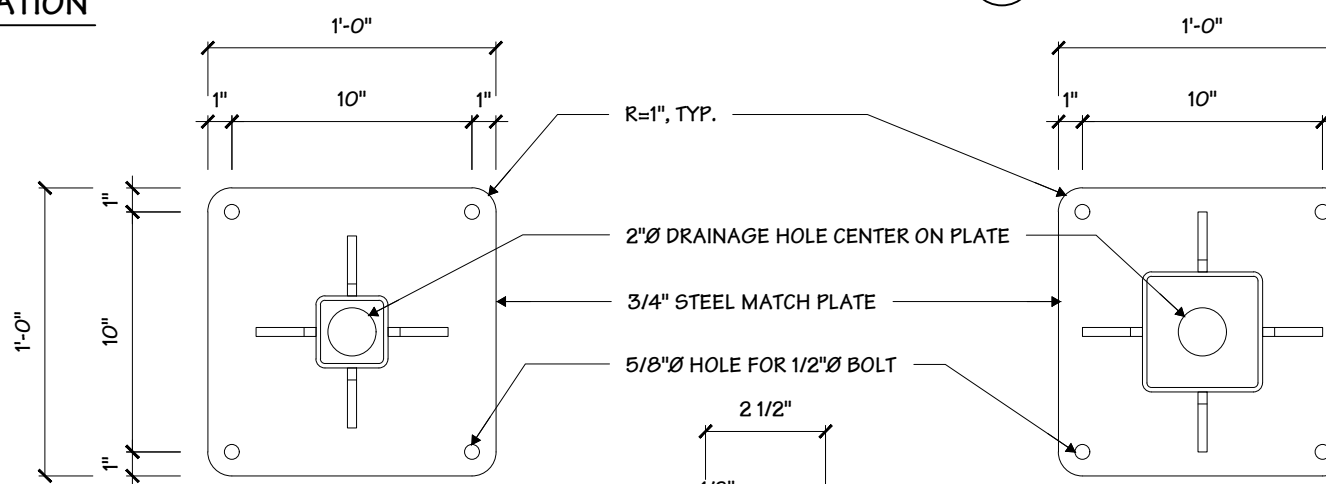


2 SIDE VIEW
2 3/4" = 1' - 0"



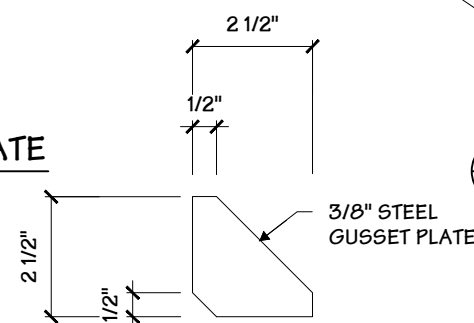
3 BASE PLATE
2 1 1/2" = 1' - 0"

4 BASE PLATE GUSSET
2 3" = 1' - 0"



5 TOP MATCH PLATE
2 1 1/2" = 1' - 0"

5 BOTTOM MATCH PLATE
2 1 1/2" = 1' - 0"



7 MATCH PLATE GUSSET
2 3" = 1' - 0"

Drawing Revisions	Change
Drawn By	Change
Date	05.15.19
DLR	CHANGED RED VINYL CALLOUT, MOVED DISCONNECT SWITCH & U.L. LABEL UPDATED LENS ROUTING INSTRUCTIONS
TLW	08.29.19
DLR	02.06.20
DLR	03.16.20
INW	10.29.20
	UPDATED LED LAYOUT
	UPDATED CLADDING DUAL LOCK
	ADDEDD CAISSON FOUNDATION
	LIGHTING UPDATE TO ULTRA MINIS

This document is the sole property of Architectural Graphics, Inc., and all design, manufacturing, reproduction, use and sale rights regarding the same are expressly forbidden. It is submitted under a confidential relationship, for a special purpose, and the recipient, by accepting this document assumes custody and agrees that this document will not be copied or reproduced in whole or in part, nor its contents revealed in any manner or to any person except for the purpose for which it was tendered, nor any special features peculiar to this design be incorporated in other projects.

Project Title
BANK OF AMERICA

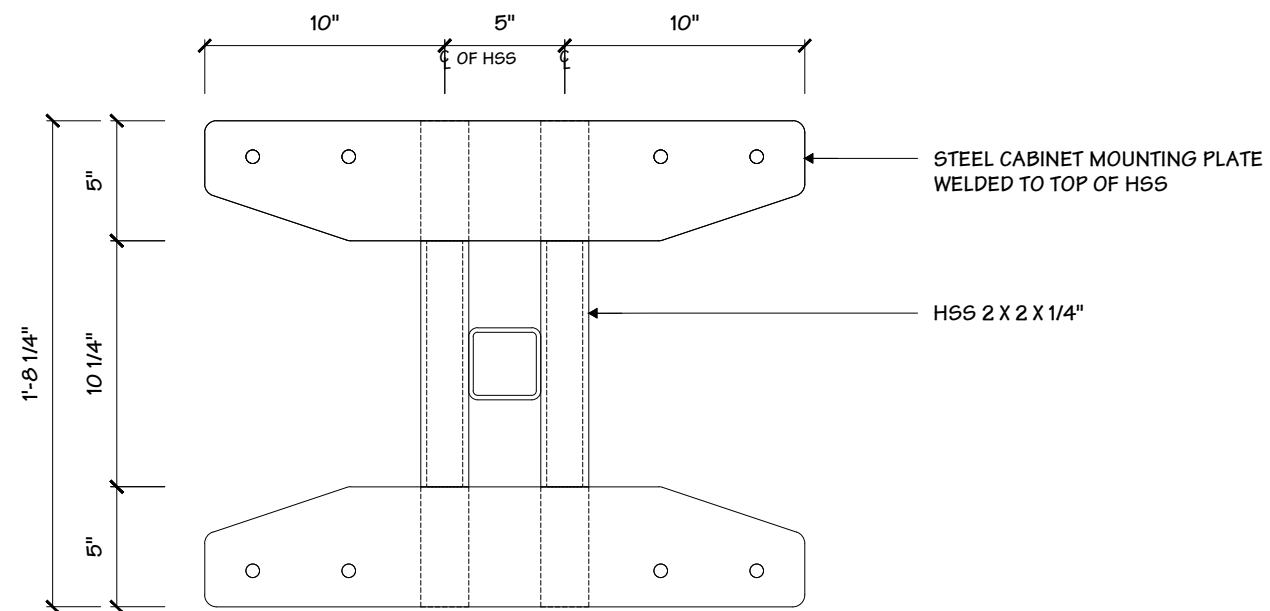
Date **02.13.19**

AGI EoR **M. SMITH**
Lead Drafter **DLR**
Drawn By **KKJ**
Project Mgr. **L. CLAIBORNE**

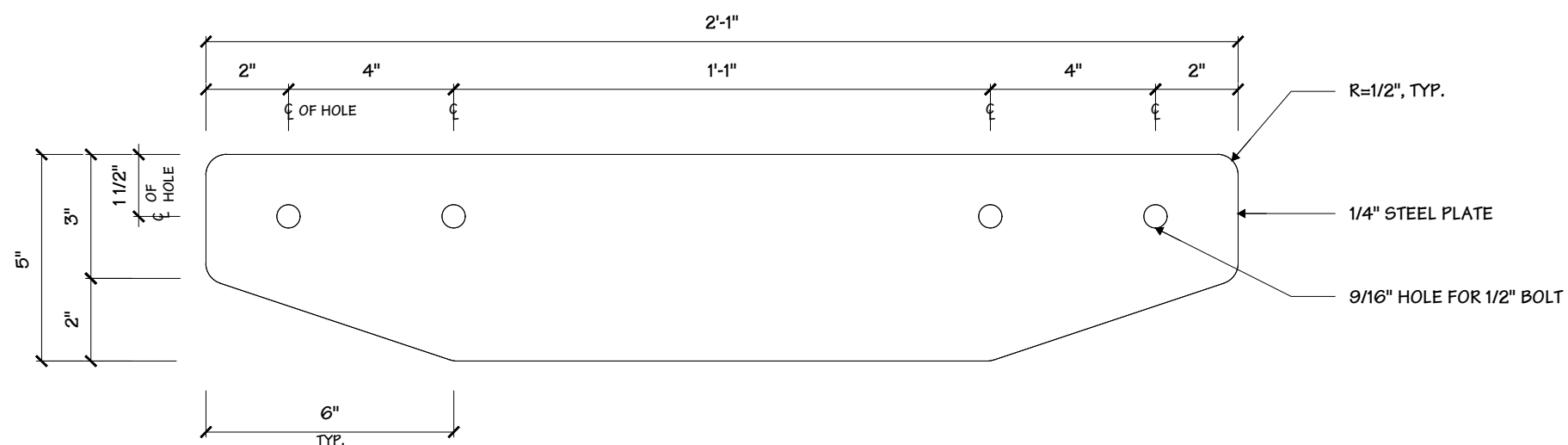
General Sign Specifications

- Interior Exterior
 - Single Faced Double Faced
 - Non-Illuminated
 - Illuminated
- 120 Volts 2.0 Amps(+/-)

Location _____
Windspeed **115 MPH / IBC 2012**



SECTION 1
3 1 1/2" = 1' - 0"



SECTION 2
3 3\"/>

Drawing Revisions	Change	Date	By
1	CHANGED RED VINYL CALL OUT, MOVED DISCONNECT SWITCH & U.L. LABEL UPDATED LENS ROUTING INSTRUCTIONS	05.15.19	DLR
2	UPDATED LED LAYOUT	08.29.19	TLW
3	UPDATED CLADDING DUAL LOCK	02.06.20	DLR
4	ADDEDD CAISSON FOUNDATION	03.16.20	DLR
5	LIGHTING UPDATE TO ULTRA MINIS	10.29.20	INW

This document is the sole property of Architectural Graphics, Inc., and all design, manufacturing, reproduction, use and sale rights regarding the same are expressly forbidden. It is submitted under a confidential relationship, for a special purpose, and the recipient, by accepting this document assumes custody and agrees that this document will not be copied or reproduced in whole or in part, nor its contents revealed in any manner or to any person except for the purpose for which it was tendered, nor any special features peculiar to this design be incorporated in other projects.

Code **34765** Type **A**

Sign Type **B2ng** PG. #: **3**

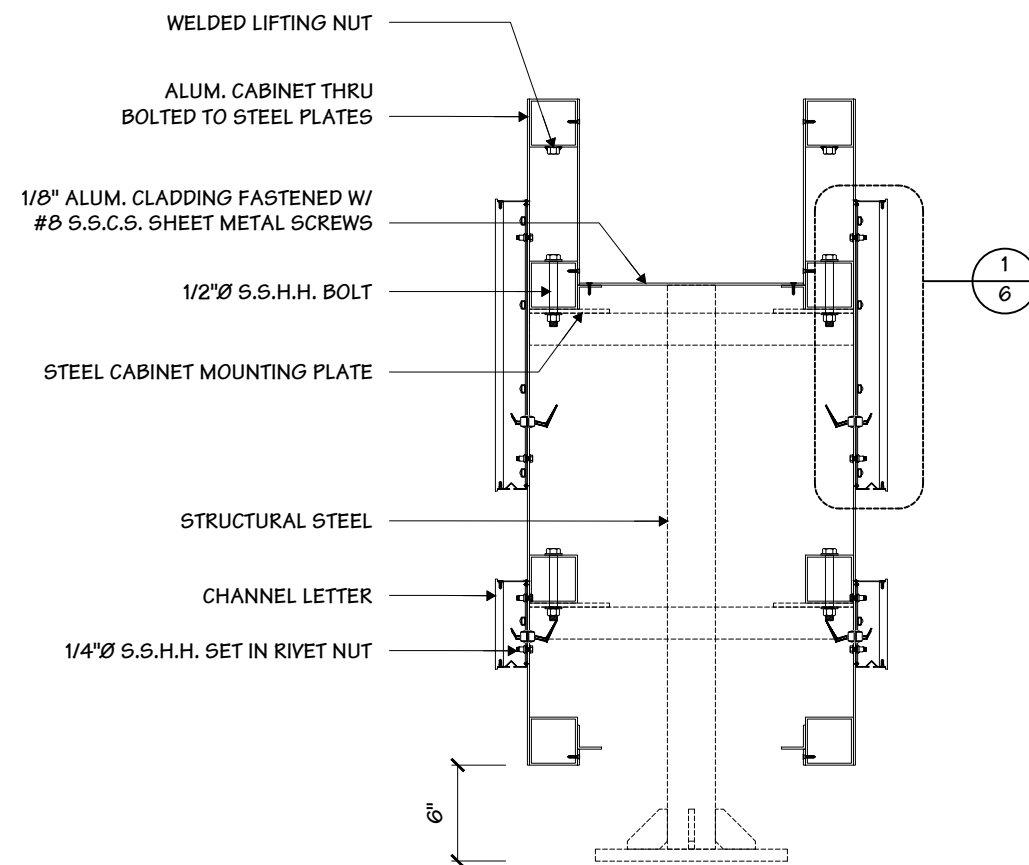
Project Title
BANK OF AMERICA

Date **02.13.19**

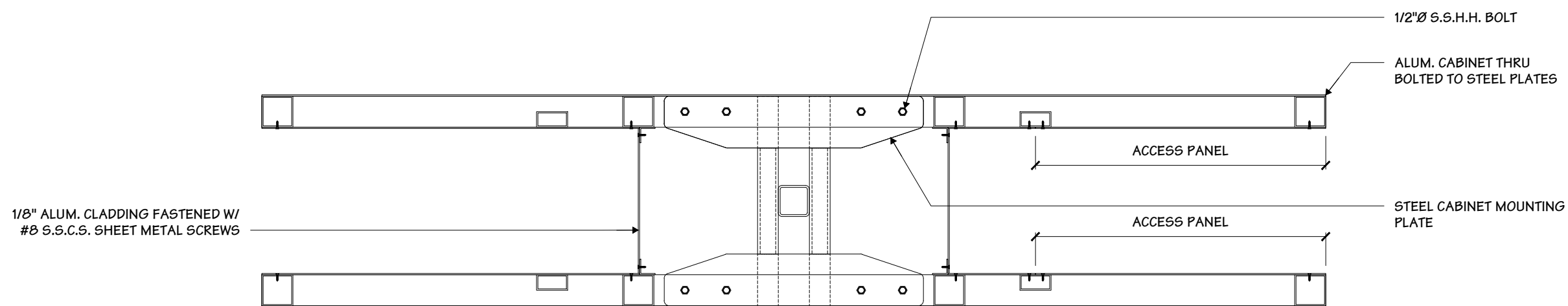
AGI EoR **M. SMITH**
Lead Drafter **DLR**
Drawn By **KKJ**
Project Mgr. **L. CLAIBORNE**

General Sign Specifications

- Interior Exterior
- Single Faced Double Faced
- Non-Illuminated
- Illuminated
- 120 Volts 2.0 Amps(+/-)
- Location _____
- Windspeed **115 MPH / IBC 2012**



1
4 SECTION @ HEAD
1" = 1' - 0"



2
4 SECTION @ HEAD
1" = 1' - 0"

Drawing Revisions	Change	Date	Drawn By
1	CHANGED RED VINYL CALL OUT, MOVED DISCONNECT SWITCH & U.L. LABEL UPDATED LENS ROUTING INSTRUCTIONS	05.15.19	DLR
2	UPDATED LED LAYOUT	08.29.19	TLW
3	UPDATED CLADDING DUAL LOCK	02.06.20	DLR
4	ADDEDD CAISSON FOUNDATION	03.16.20	DLR
5	LIGHTING UPDATE TO ULTRA MINIS	10.29.20	INW

This document is the sole property of Architectural Graphics, Inc., and all design, manufacturing, reproduction, use and sale rights regarding the same are expressly forbidden. It is submitted under a confidential relationship, for a special purpose, and the recipient, by accepting this document assumes custody and agrees that this document will not be copied or reproduced in whole or in part, nor its contents revealed in any manner or to any person except for the purpose for which it was tendered, nor any special features peculiar to this design be incorporated in other projects.

Code **34765** Type **A**

Sign Type **B2ng** PG. #: **4**

NOTES:
 1.) REAR CABINET AND ITS CLADDING ARE MIRROR IMAGE OF FRONT.

Project Title
BANK OF AMERICA

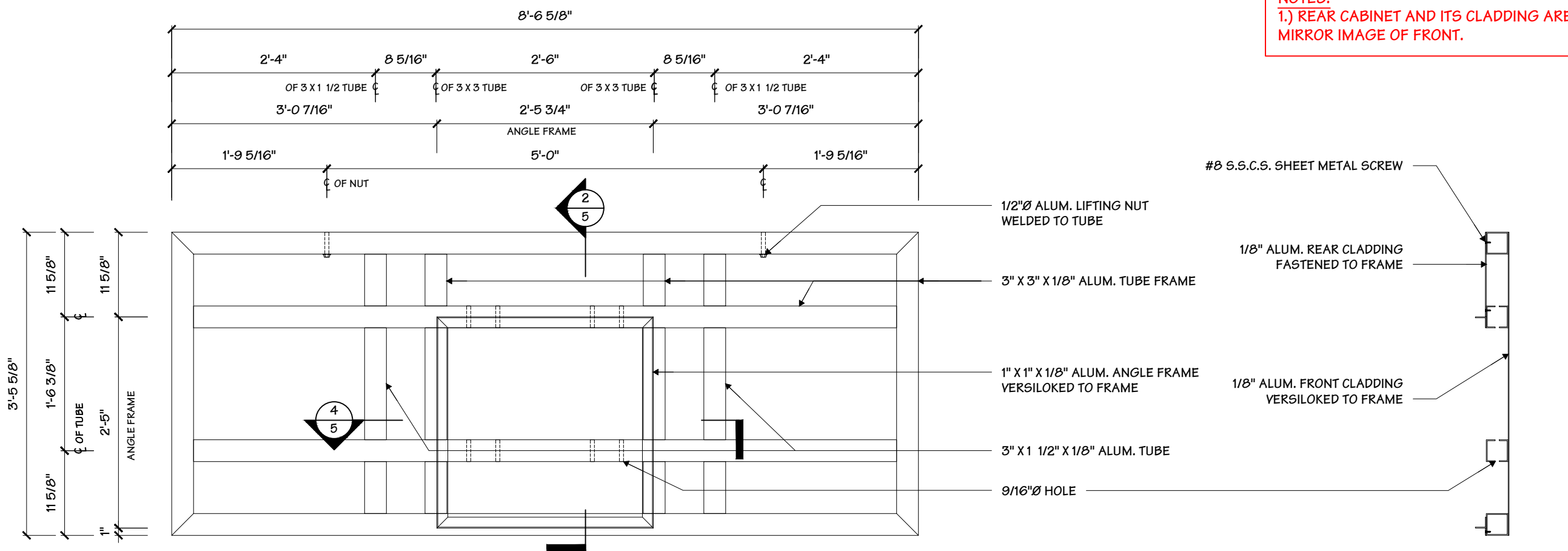
Date **02.13.19**

AGI EoR **M. SMITH**
 Lead Drafter **DLR**
 Drawn By **KKJ**
 Project Mgr. **L. CLAIBORNE**

General Sign Specifications

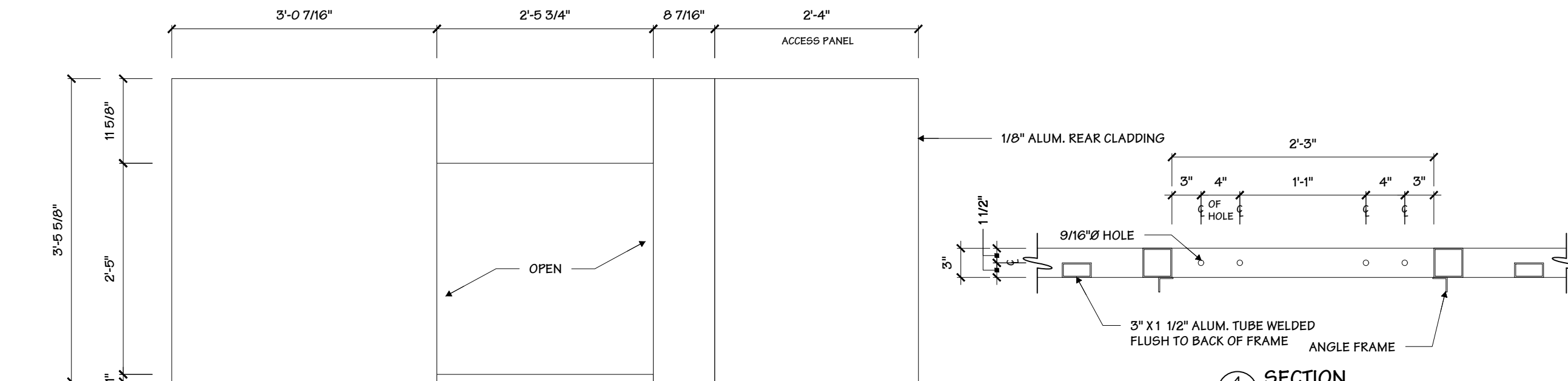
- Interior Exterior
 - Single Faced Double Faced
 - Non-Illuminated
 - Illuminated
- 120 Volts 2.0 Amps(+/-)

Location _____
 Windspeed **115 MPH / IBC 2012**



1 CABINET REAR STRUCTURAL ELEVATION
 5 3/4" = 1' - 0"

2 SECTION
 5 3/4" = 1' - 0"



3 REAR CLADDING DETAIL
 5 3/4" = 1' - 0"

4 SECTION
 5 1" = 1' - 0"

Drawing Revisions	Change	Date	By
1	CHANGED RED VINYL CALLOUT, MOVED DISCONNECT SWITCH & U.L. LABEL UPDATED LENS ROUTING INSTRUCTIONS	05.15.19	DLR
2	UPDATED LED LAYOUT	08.29.19	TLW
3	UPDATED CLADDING DUAL LOCK	02.06.20	DLR
4	ADDEDD CAISSON FOUNDATION	03.16.20	DLR
5	LIGHTING UPDATE TO ULTRA MINIS	10.29.20	INW

This document is the sole property of Architectural Graphics, Inc., and all design, manufacturing, reproduction, use and sale rights regarding the same are expressly forbidden. It is submitted under a confidential relationship, for a special purpose, and the recipient, by accepting this document assumes custody and agrees that this document will not be copied or reproduced in whole or in part, nor its contents revealed in any manner or to any person except for the purpose for which it was tendered, nor any special features peculiar to this design be incorporated in other projects.

Code	34765	Type	A
Sign Type	B2ng	PG. #:	5



Project Title
BANK OF AMERICA

Date **02.13.19**

AGI EoR **M. SMITH**
Lead Drafter **DLR**
Drawn By **KKJ**
Project Mgr. **L. CLAIBORNE**

General Sign Specifications

- Interior Exterior
 - Single Faced Double Faced
 - Non-Illuminated
 - Illuminated
- 120 Volts 2.0 Amps(+/-)

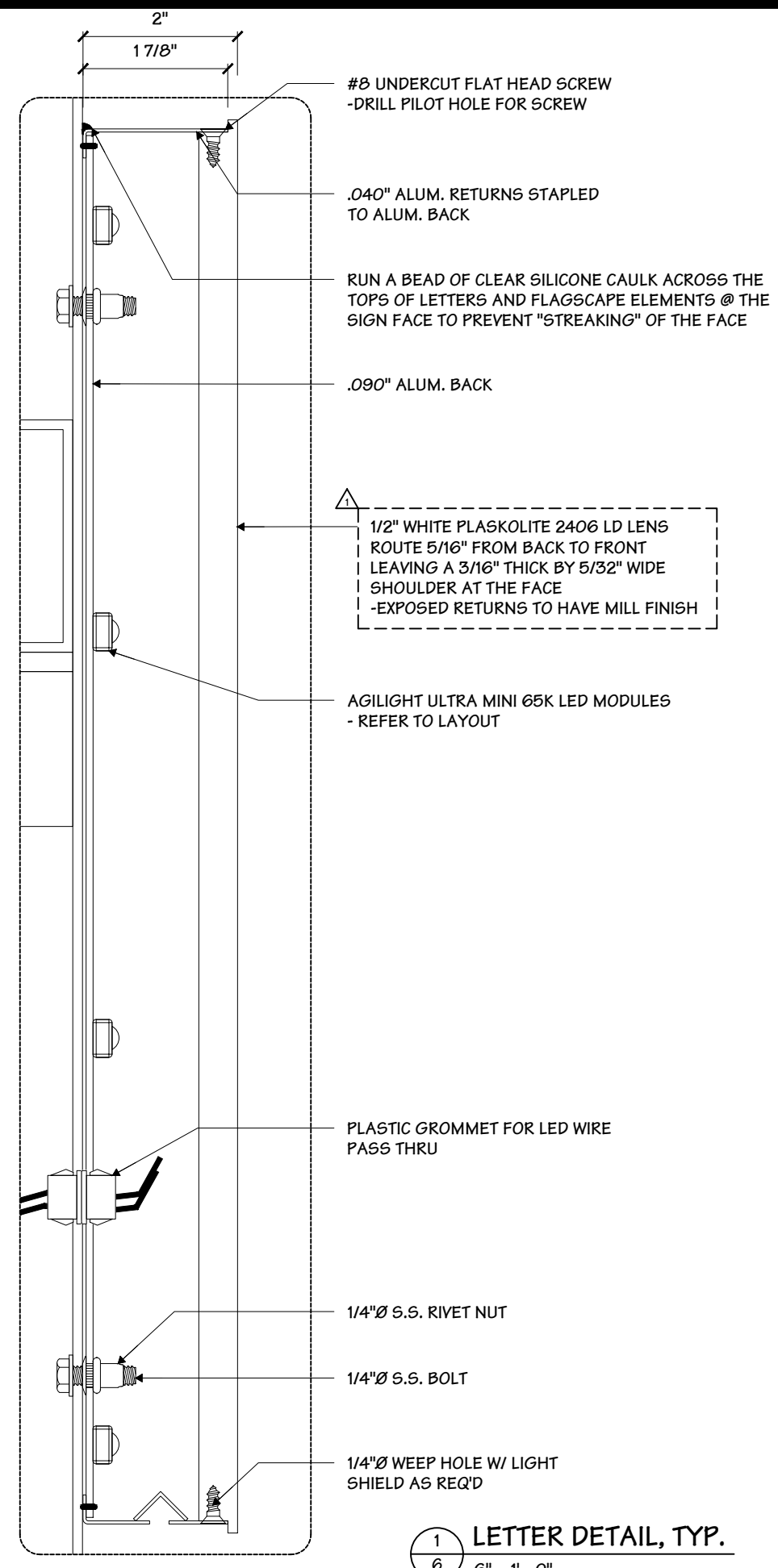
Location _____
Windspeed **115 MPH / IBC 2012**

Drawing Revisions	Date	Change
△	05.15.19	CHANGED RED VINYL CALLOUT. MOVED DISCONNECT SWITCH & U.L. LABEL UPDATED LENS ROUTING INSTRUCTIONS
△	08.29.19	UPDATED LED LAYOUT
△	02.06.20	UPDATED CLADDING DUAL LOCK
△	03.16.20	ADDEDD CAISSON FOUNDATION
△	10.29.20	LIGHTING UPDATE TO ULTRA MINIS
△		
△		
△		
△		

This document is the sole property of Architectural Graphics, Inc., and all design, manufacturing, reproduction, use and sale rights regarding the same are expressly forbidden. It is submitted under a confidential relationship, for a special purpose, and the recipient, by accepting this document assumes custody and agrees that this document will not be copied or reproduced in whole or in part, nor its contents revealed in any manner or to any person except for the purpose for which it was tendered, nor any special features peculiar to this design be incorporated in other projects.

Code **34765** Type **A**

Sign Type **B2ng** PG. #: **6**



NOTES:
 1.) PAINT INTERIOR OF LETTERS W/ 'WHITE' LIGHT ENHANCEMENT PAINT
 2.) THE LETTER 'K' IS TO BE FABRICATED IN 2 SEPARATE PARTS & ATTACHED AT THE POINT. CAULK THE SEAM AT JOINT AFTER INSTALLATION.
 3.) THE LETTER HEIGHT AND STROKE INDICATED ON THE DRAWING IS THE OUTSIDE EDGE OF THE ROUTED ACRYLIC FACE.

1 LETTER DETAIL, TYP.
6 6" = 1' - 0"

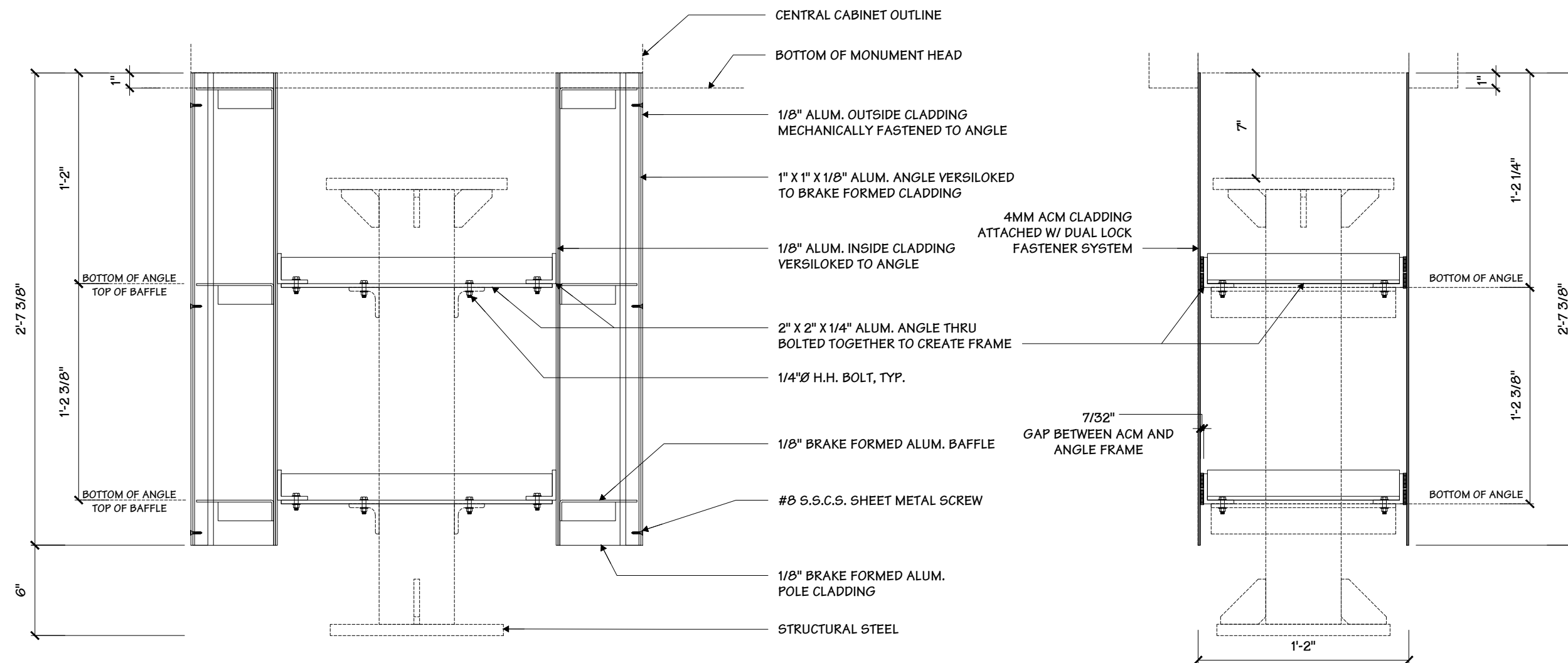
Project Title
BANK OF AMERICA

Date **02.13.19**

AGI EoR **M. SMITH**
Lead Drafter **DLR**
Drawn By **KKJ**
Project Mgr. **L. CLAIBORNE**

General Sign Specifications

- Interior Exterior
- Single Faced Double Faced
- Non-Illuminated
- Illuminated
- 120 Volts 2.0 Amps(+/-)
- Location _____
- Windspeed **115 MPH / IBC 2012**



1 SECTION
1 1/2" = 1' - 0"

2 SECTION
1 1/2" = 1' - 0"

Drawing Revisions	Change	Date	Drawn By
1	CHANGED RED VINYL CALL OUT, MOVED DISCONNECT SWITCH & U.L. LABEL UPDATED LENS ROUTING INSTRUCTIONS	05.15.19	DLR
2	UPDATED LED LAYOUT	05.29.19	TLW
3	UPDATED CLADDING DUAL LOCK	02.06.20	DLR
4	ADDEDD CAISSON FOUNDATION	03.16.20	DLR
5	LIGHTING UPDATE TO ULTRA MINIS	10.29.20	INW

This document is the sole property of Architectural Graphics, Inc., and all design, manufacturing, reproduction, use and sale rights regarding the same are expressly forbidden. It is submitted under a confidential relationship, for a special purpose, and the recipient, by accepting this document assumes custody and agrees that this document will not be copied or reproduced in whole or in part, nor its contents revealed in any manner or to any person except for the purpose for which it was tendered, nor any special features peculiar to this design be incorporated in other projects.

Code	34765	Type	A
Sign Type	B2ng	PG. #:	7

Project Title
BANK OF AMERICA

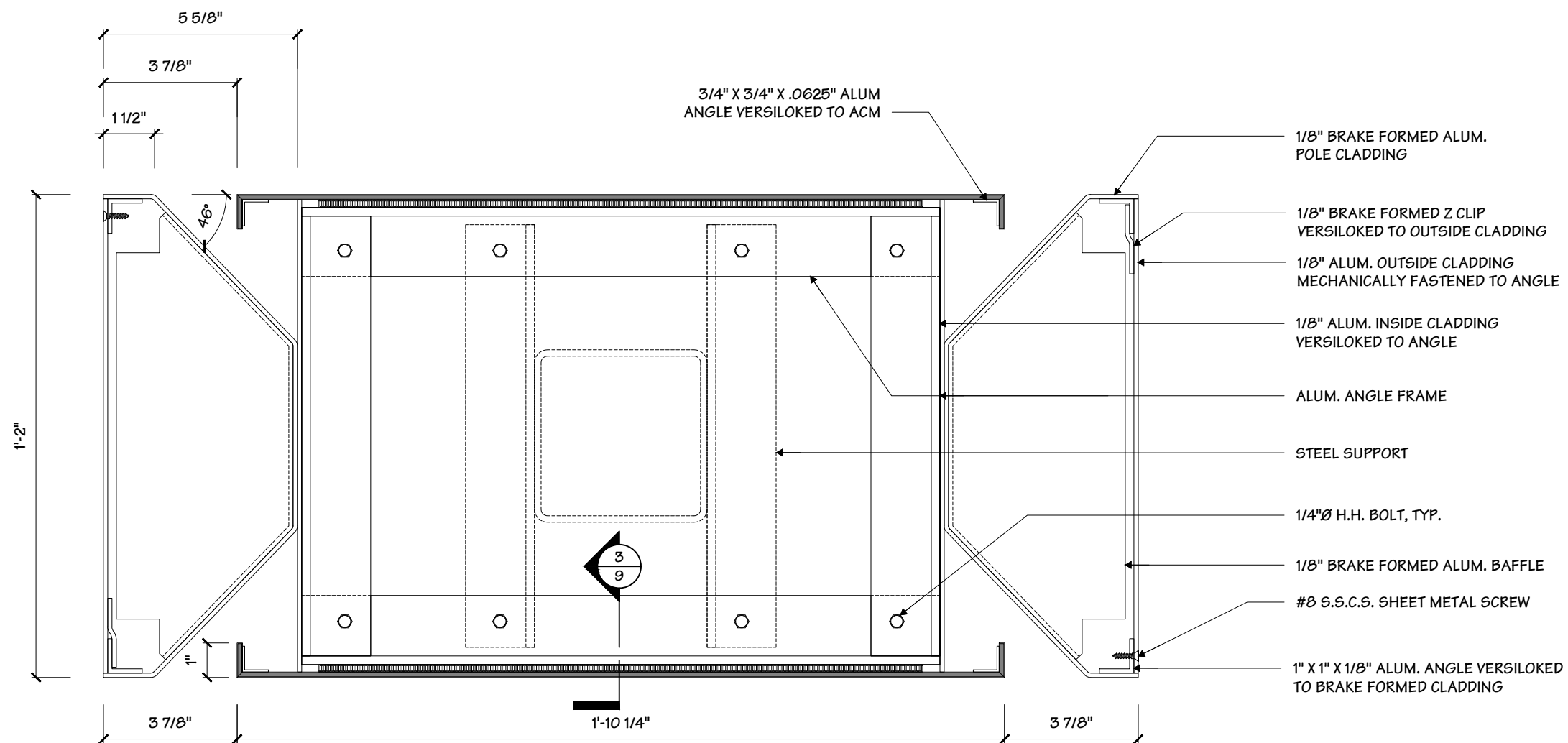
Date **02.13.19**

AGI EoR **M. SMITH**
Lead Drafter **DLR**
Drawn By **KKJ**
Project Mgr. **L. CLAIBORNE**

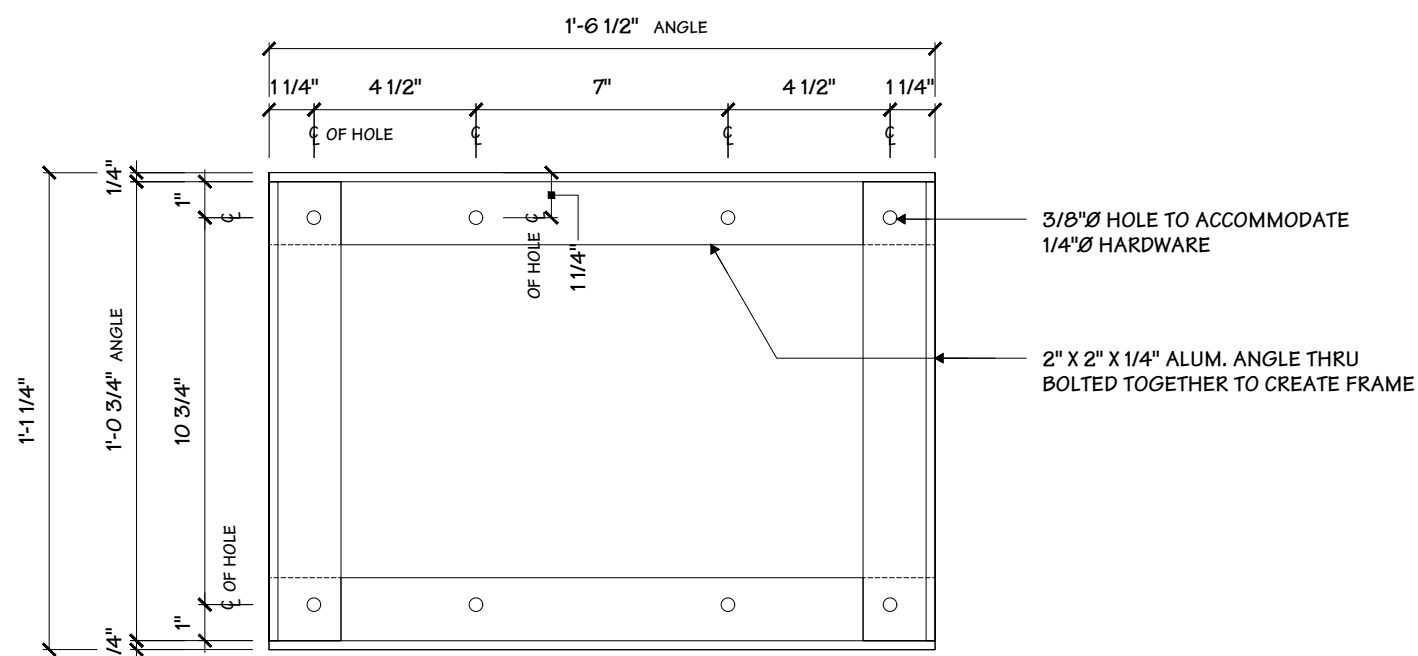
General Sign Specifications

- Interior Exterior
- Single Faced Double Faced
- Non-Illuminated
- Illuminated
- 120 Volts 2.0 Amps(+/-)

Location _____
Windspeed **115 MPH / IBC 2012**



1 SECTION
3" = 1'-0"



2 ANGLE FRAME DETAIL
3/16" = 1"

Drawing Revisions	Change	Date	Drawn By
1	CHANGED RED VINYL CALL OUT. MOVED DISCONNECT SWITCH & U.L. LABEL UPDATED LENS ROUTING INSTRUCTIONS	05.15.19	DLR
2	UPDATED LED LAYOUT	08.29.19	TLW
3	UPDATED CLADDING DUAL LOCK	02.06.20	DLR
4	ADDEDD CAISSON FOUNDATION	03.16.20	DLR
5	LIGHTING UPDATE TO ULTRA MINIS	10.29.20	INW

This document is the sole property of Architectural Graphics, Inc., and all design, manufacturing, reproduction, use and sale rights regarding the same are expressly forbidden. It is submitted under a confidential relationship, for a special purpose, and the recipient, by accepting this document assumes custody and agrees that this document will not be copied or reproduced in whole or in part, nor its contents revealed in any manner or to any person except for the purpose for which it was tendered, nor any special features peculiar to this design be incorporated in other projects.

Code **34765** Type **A**

Sign Type **B2ng** PG. #: **8**

Project Title
BANK OF AMERICA

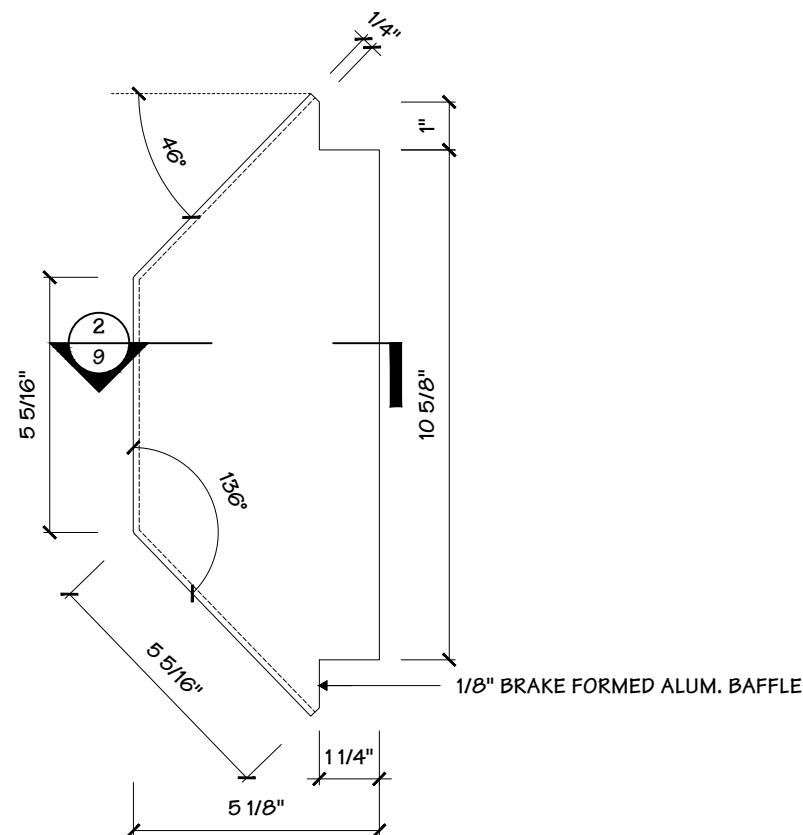
Date **02.13.19**

AGI EoR **M. SMITH**
Lead Drafter **DLR**
Drawn By **KKJ**
Project Mgr. **L. CLAIBORNE**

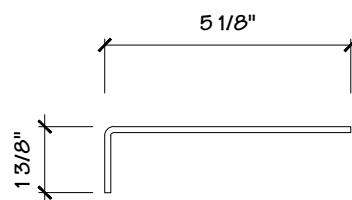
General Sign Specifications

- Interior Exterior
 - Single Faced Double Faced
 - Non-Illuminated
 - Illuminated
- 120 Volts 2.0 Amps(+/-)

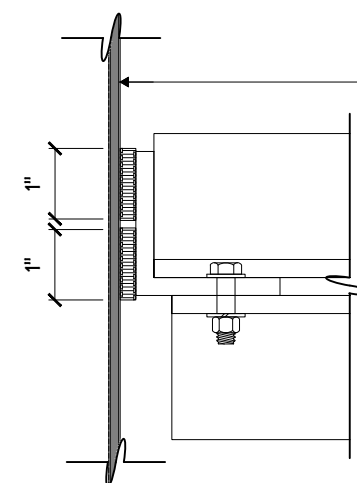
Location _____
Windspeed **115 MPH / IBC 2012**



1
9 **BAFFLE DETAIL**
3" = 1' - 0"



2
9 **SECTION**
3" = 1' - 0"



4MM ACM CLADDING ATTACHED W/
250/250 DUAL LOCK (3M #SJ3550 1" WIDE)
FASTENER SYSTEM
- TWO ROWS OF 1" - TYP.
- STOP 1/2" SHORT OF ENDS OF ANGLES

3
9 **SECTION VIEW @ CLADDING**
3/8" = 1"

Change	Date	By	Revisions
CHANGED RED VINYL CALLOUT, MOVED DISCONNECT SWITCH & U.L. LABEL UPDATED LENS ROUTING INSTRUCTIONS	05.15.19	DLR	△
UPDATED LED LAYOUT	08.29.19	TLW	△
UPDATED CLADDING DUAL LOCK	02.06.20	DLR	△
ADDEDD CAISSON FOUNDATION	03.16.20	DLR	△
LIGHTING UPDATE TO ULTRA MINIS	10.29.20	INW	△

This document is the sole property of Architectural Graphics, Inc., and all design, manufacturing, reproduction, use and sale rights regarding the same are expressly forbidden. It is submitted under a confidential relationship, for a special purpose, and the recipient, by accepting this document assumes custody and agrees that this document will not be copied or reproduced in whole or in part, nor its contents revealed in any manner or to any person except for the purpose for which it was tendered, nor any special features peculiar to this design be incorporated in other projects.

Code **34765** Type **A**

2655 International Pkwy.
Virginia Beach, VA 23452

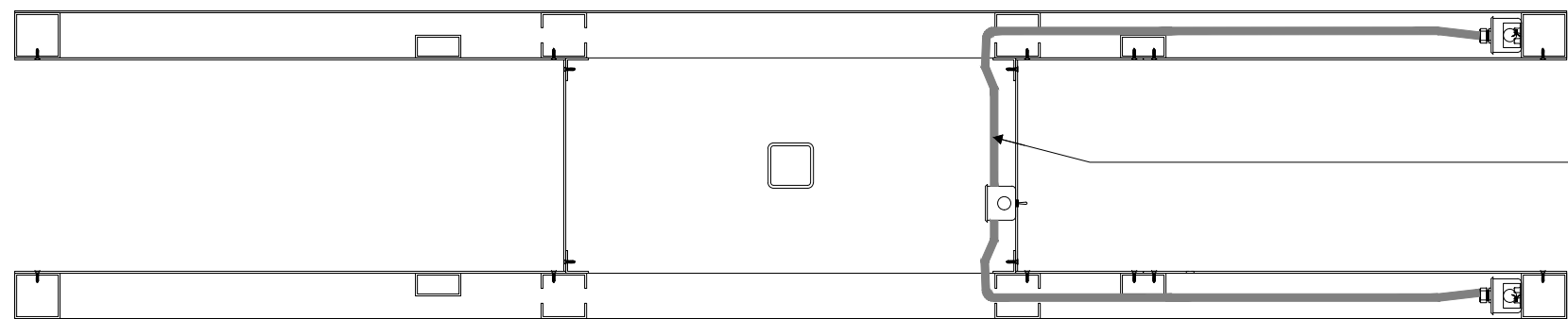
Sign Type **B2ng** PG. #: **9**

General Sign Specifications

- Interior Exterior
 - Single Faced Double Faced
 - Non-Illuminated
 - Illuminated
- 120 Volts 2.0 Amps(+/-)

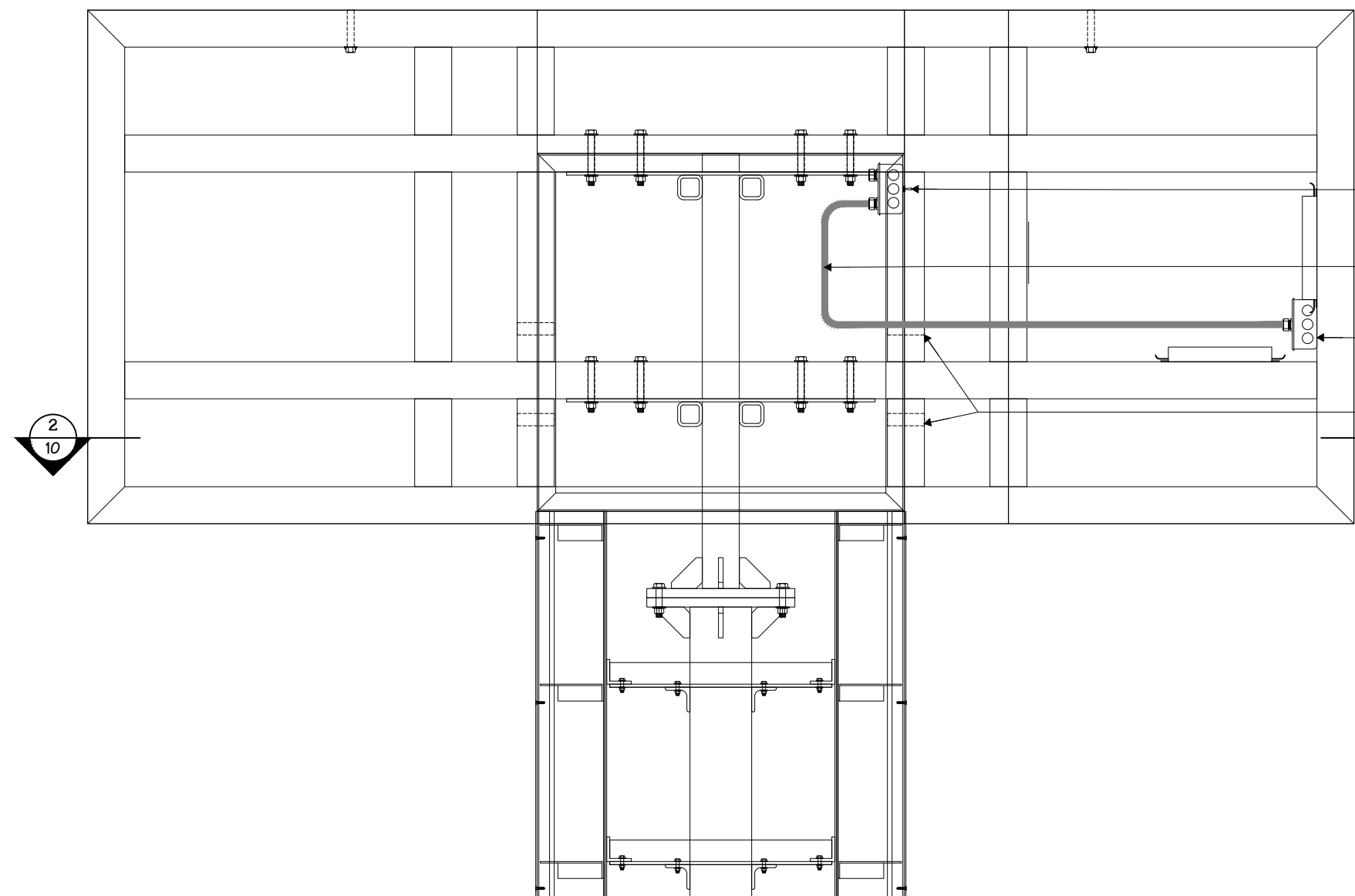
Location _____
Windspeed **115 MPH / IBC 2012**

NOTES:
1.) PROVIDE PASS THRU HOLES IN CABINET TUBE FRAME FOR ELECTRICAL WIRE PASS THRU.



1/2" LIQUID TITE CONDUIT TO DISCONNECT SWITCH

SECTION 2
10 1" = 1' - 0"



J-BOX W/ DISCONNECT SWITCH

1/2" LIQUID TITE CONDUIT TO OWNER PROVIDED POWER SUPPLY

J-BOX W/ POWER SUPPLY -FOR P.S. SPECK REFER TO LED LAYOUT

ELECTRICAL PASS THRU HOLE IN TUBE AS NEEDED

ELECTRICAL 1
10 1" = 1' - 0"

Drawing Revisions	Change	Date	Drawn By
△	CHANGED RED VINYL CALLOUT, MOVED DISCONNECT SWITCH & U.L. LABEL UPDATED LENS ROUTING INSTRUCTIONS	05.15.19	DLR
△	UPDATED LED LAYOUT	08.29.19	TLW
△	UPDATED CLADDING DUAL LOCK	02.06.20	DLR
△	ADDEDD CAISSON FOUNDATION	03.16.20	DLR
△	LIGHTING UPDATE TO ULTRA MINIS	10.29.20	INW

This document is the sole property of Architectural Graphics, Inc., and all design, manufacturing, reproduction, use and sale rights regarding the same are expressly forbidden. It is submitted under a confidential relationship, for a special purpose, and the recipient, by accepting this document assumes custody and agrees that this document will not be copied or reproduced in whole or in part, nor its contents revealed in any manner or to any person except for the purpose for which it was tendered, nor any special features peculiar to this design be incorporated in other projects.

Code **34765** Type **A**



Project Title
BANK OF AMERICA

Date **02.13.19**

AGI EoR **M. SMITH**
Lead Drafter **DLR**
Drawn By **KKJ**
Project Mgr. **L. CLAIBORNE**

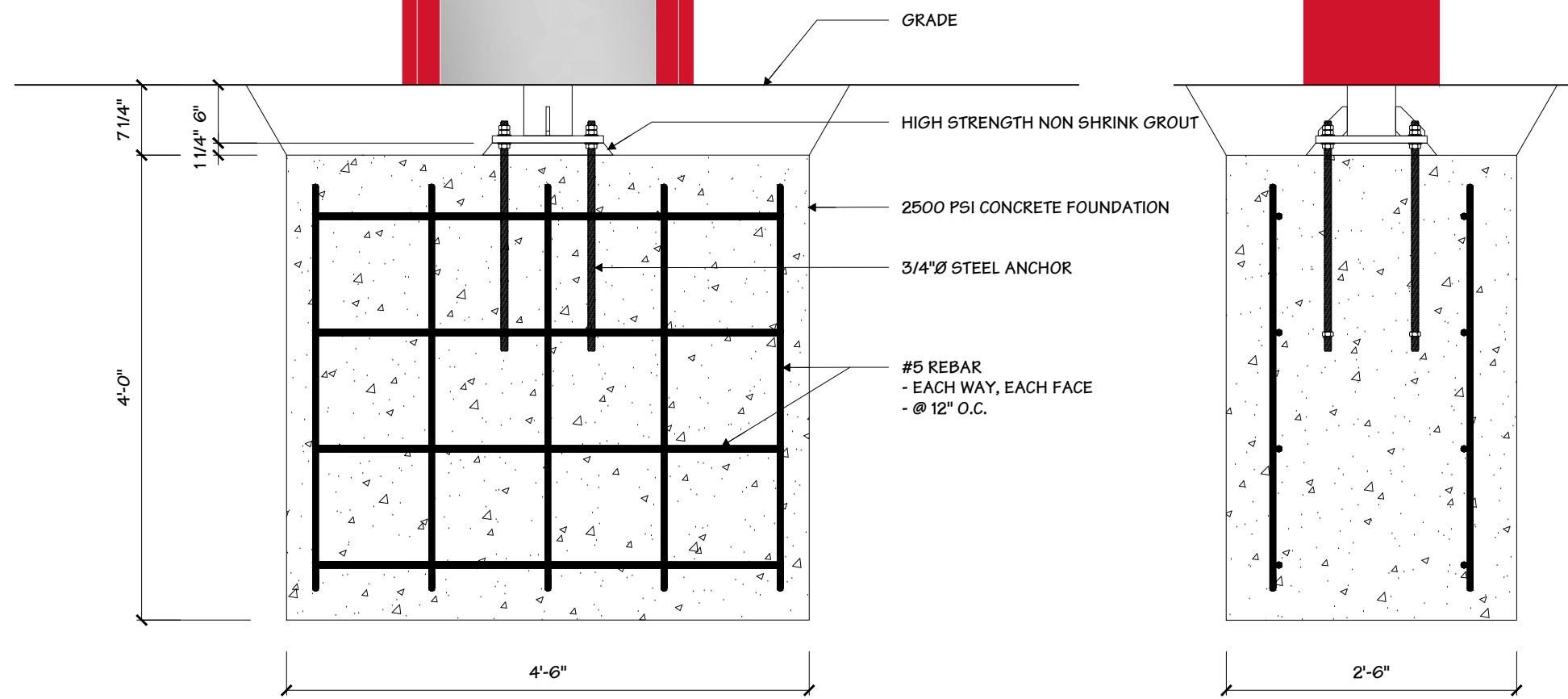
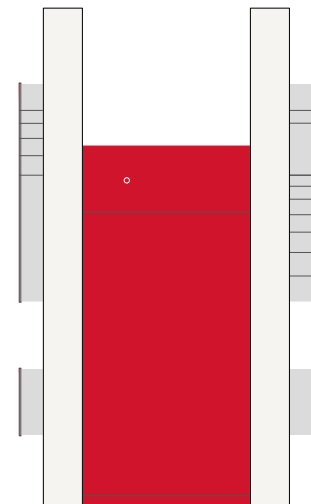
General Sign Specifications

- Interior Exterior
 - Single Faced Double Faced
 - Non-Illuminated
 - Illuminated
- 120 Volts 2.0 Amps(+/-)

Location _____
Windspeed **115 MPH / IBC 2012**

NOTES:
ALL STEEL BELOW GRADE (INCLUDING EXPOSED ANCHOR BOLTS) SHALL BE COATED WITH CARBOLINE BITUMASTIC 50 COAL TAR OR EQUAL AFTER INSTALLATION AND PRIOR TO LANDSCAPING.

MATERIAL SPECIFICATIONS:
(UNLESS OTHERWISE NOTED)
CONCRETE - 2500 PSI
VERTICAL SLAB - (1.66 CUBIC YARDS)
REINFORCING - GRADE 60 W/ 3" MIN. COVER
DO NOT WELD REBAR



1 FOUNDATION
11

Drawing Revisions	Change	Date	Drawn By
1	CHANGED RED VINYL CALL OUT, MOVED DISCONNECT SWITCH & U.L. LABEL UPDATED LENS ROUTING INSTRUCTIONS	05.15.19	DLR
2	UPDATED LED LAYOUT	05.29.19	TLW
3	UPDATED CLADDING DUAL LOCK	02.06.20	DLR
4	ADDEDD CAISSON FOUNDATION	03.16.20	DLR
5	LIGHTING UPDATE TO ULTRA MINIS	10.29.20	INW

This document is the sole property of Architectural Graphics, Inc., and all design, manufacturing, reproduction, use and sale rights regarding the same are expressly forbidden. It is submitted under a confidential relationship, for a special purpose, and the recipient, by accepting this document assumes custody and agrees that this document will not be copied or reproduced in whole or in part, nor its contents revealed in any manner or to any person except for the purpose for which it was tendered, nor any special features peculiar to this design be incorporated in other projects.

Code **34765** Type **A**

2655 International Pkwy.
Virginia Beach, VA 23452

Sign Type **B2ng** PG. #: **11**



Project Title
BANK OF AMERICA

Date **02.13.19**

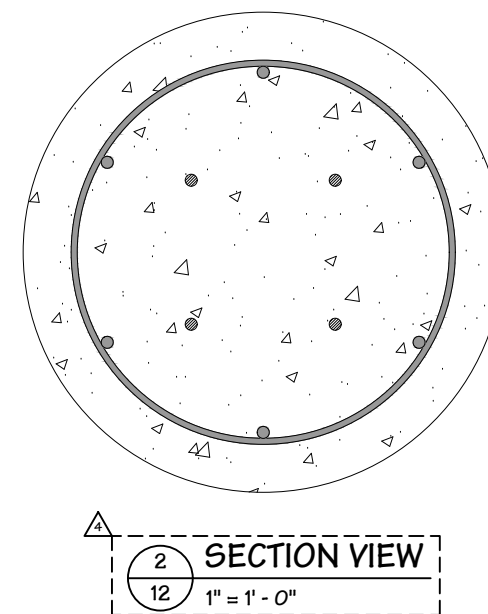
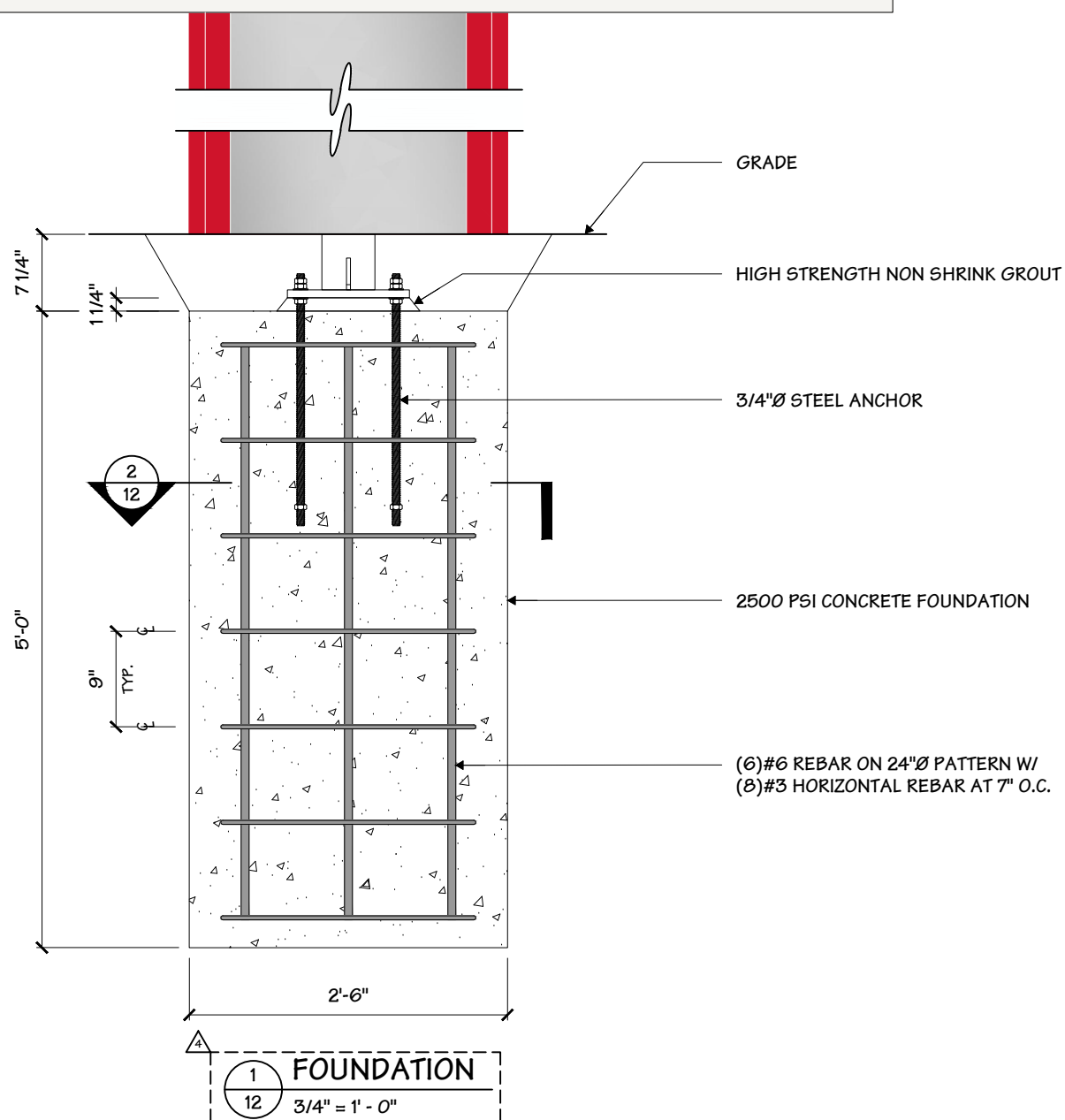
AGI EoR **M. SMITH**
Lead Drafter **DLR**
Drawn By **KKJ**
Project Mgr. **L. CLAIBORNE**

General Sign Specifications

- Interior Exterior
- Single Faced Double Faced
- Non-Illuminated
- Illuminated
- 120 Volts 2.0 Amps(+/-)

Location _____
Windspeed **115 MPH / IBC 2012**

NOTES:
ALL STEEL BELOW GRADE (INCLUDING EXPOSED ANCHOR BOLTS) SHALL BE COATED WITH CARBOLINE BITUMASTIC 50 COAL TAR OR EQUAL AFTER INSTALLATION AND PRIOR TO LANDSCAPING.
MATERIAL SPECIFICATIONS:
(UNLESS OTHERWISE NOTED)
CONCRETE - 2500 PSI
CAISSON - (.91 CUBIC YARDS)
REINFORCING - GRADE 60 W/ 3" MIN. COVER
DO NOT WELD REBAR



Drawing Revisions	Change	Date	Drawn By
1	CHANGED RED VINYL CALL OUT, MOVED DISCONNECT SWITCH & U.L. LABEL	05.15.19	DLR
2	UPDATED LENS ROUTING INSTRUCTIONS	05.29.19	TLW
3	UPDATED LED LAYOUT	02.06.20	DLR
4	ADDEDD CLADDING DUAL LOCK	03.16.20	DLR
5	ADDEDD CAISSON FOUNDATION	10.29.20	INW
6	LIGHTING UPDATE TO ULTRA MINIS		

This document is the sole property of Architectural Graphics, Inc., and all design, manufacturing, reproduction, use and sale rights regarding the same are expressly forbidden. It is submitted under a confidential relationship, for a special purpose, and the recipient, by accepting this document assumes custody and agrees that this document will not be copied or reproduced in whole or in part, nor its contents revealed in any manner or to any person except for the purpose for which it was tendered, nor any special features peculiar to this design be incorporated in other projects.

Code **34765** Type **A**

2655 International Pkwy.
Virginia Beach, VA 23452

Sign Type **B2ng** PG. #: **12**

Project Title
BANK OF AMERICA

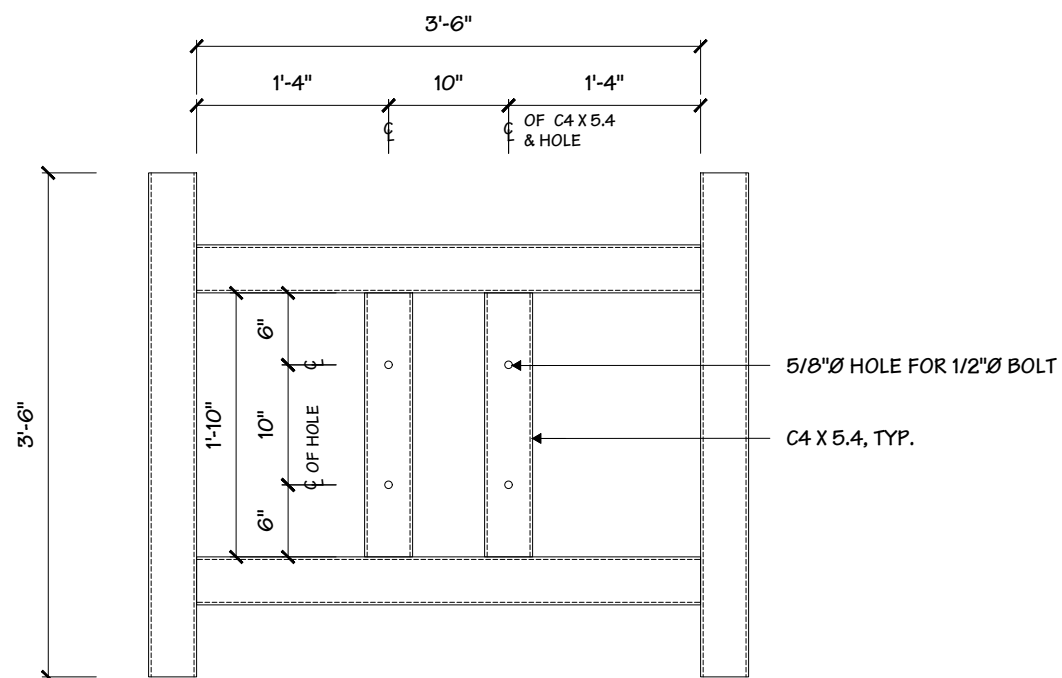
Date **02.13.19**

AGI EoR **M. SMITH**
Lead Drafter **DLR**
Drawn By **KKJ**
Project Mgr. **L. CLAIBORNE**

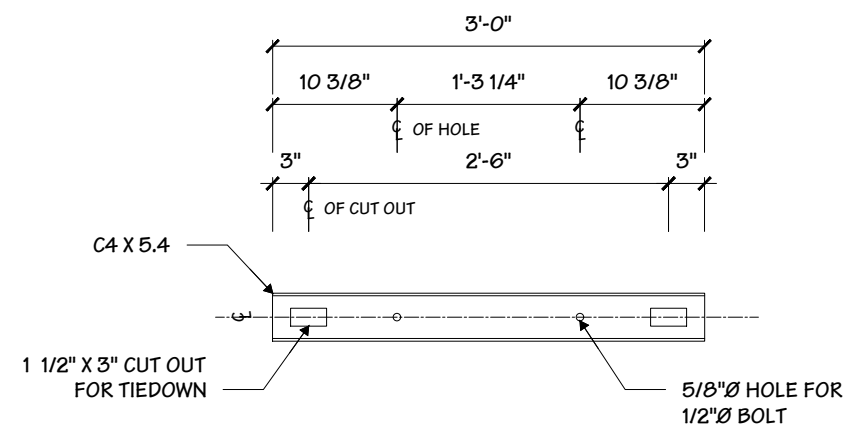
General Sign Specifications

- Interior Exterior
 - Single Faced Double Faced
 - Non-Illuminated
 - Illuminated
- 120 Volts 2.0 Amps(+/-)

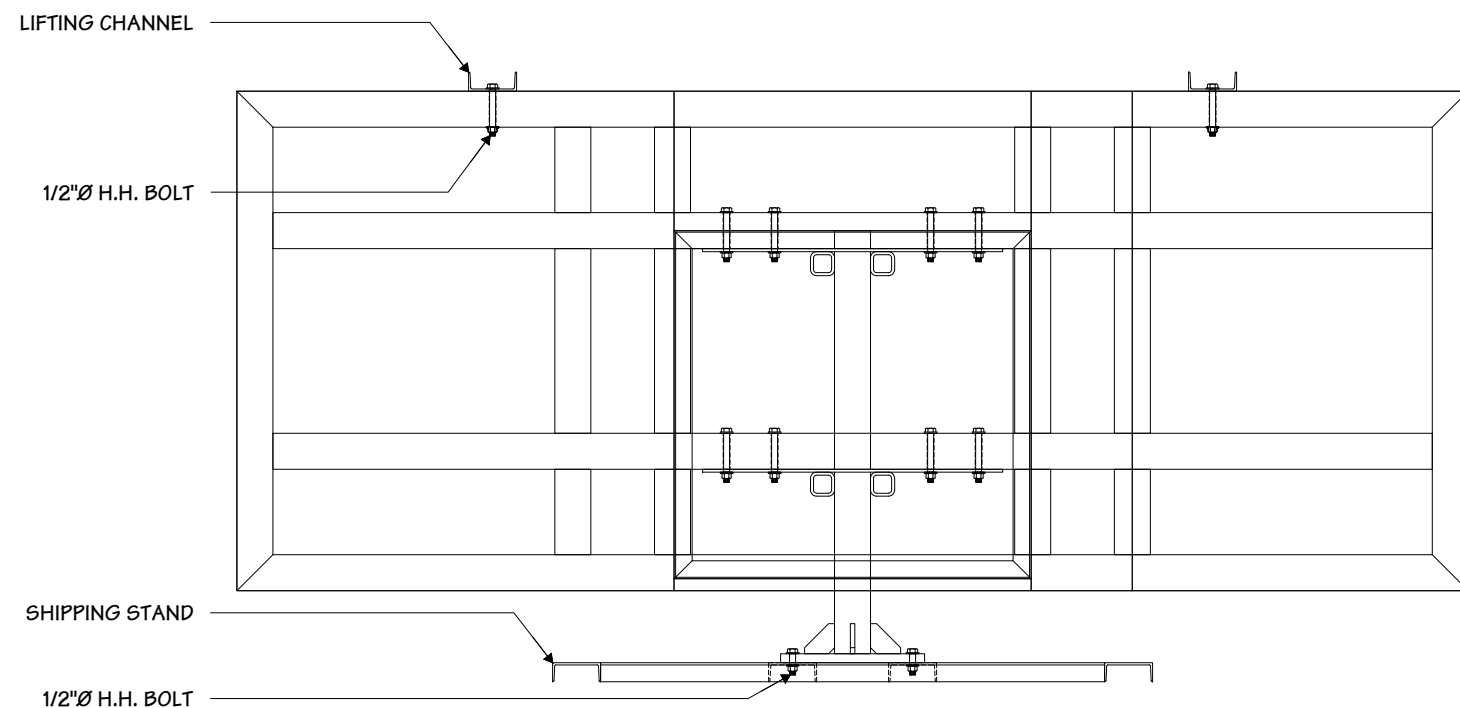
Location _____
Windspeed **115 MPH / IBC 2012**



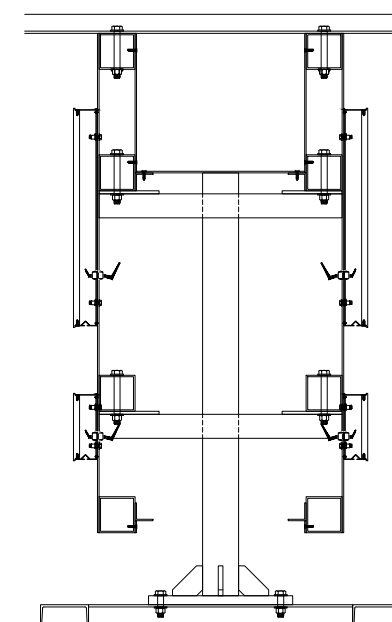
2 SHIPPING STAND DETAIL
12 3/4" = 1' - 0"



3 LIFTING CHANNEL DETAIL
12 3/4" = 1' - 0"



1 SIGN HEAD SHIPPING STAND
12 3/4" = 1' - 0"



Drawing Revisions	Change	Date	Drawn By
1	CHANGED RED VINYL CALL OUT, MOVED DISCONNECT SWITCH & U.L. LABEL UPDATED LENS ROUTING INSTRUCTIONS	05.15.19	DLR
2	UPDATED LED LAYOUT	08.29.19	TLW
3	UPDATED CLADDING DUAL LOCK	02.06.20	DLR
4	ADDEDD CAISSON FOUNDATION	03.16.20	DLR
5	LIGHTING UPDATE TO ULTRA MINIS	10.29.20	INW

This document is the sole property of Architectural Graphics, Inc., and all design, manufacturing, reproduction, use and sale rights regarding the same are expressly forbidden. It is submitted under a confidential relationship, for a special purpose, and the recipient, by accepting this document assumes custody and agrees that this document will not be copied or reproduced in whole or in part, nor its contents revealed in any manner or to any person except for the purpose for which it was tendered, nor any special features peculiar to this design be incorporated in other projects.

Code **34765** Type **A**

Sign Type **B2ng** PG. #: **12**

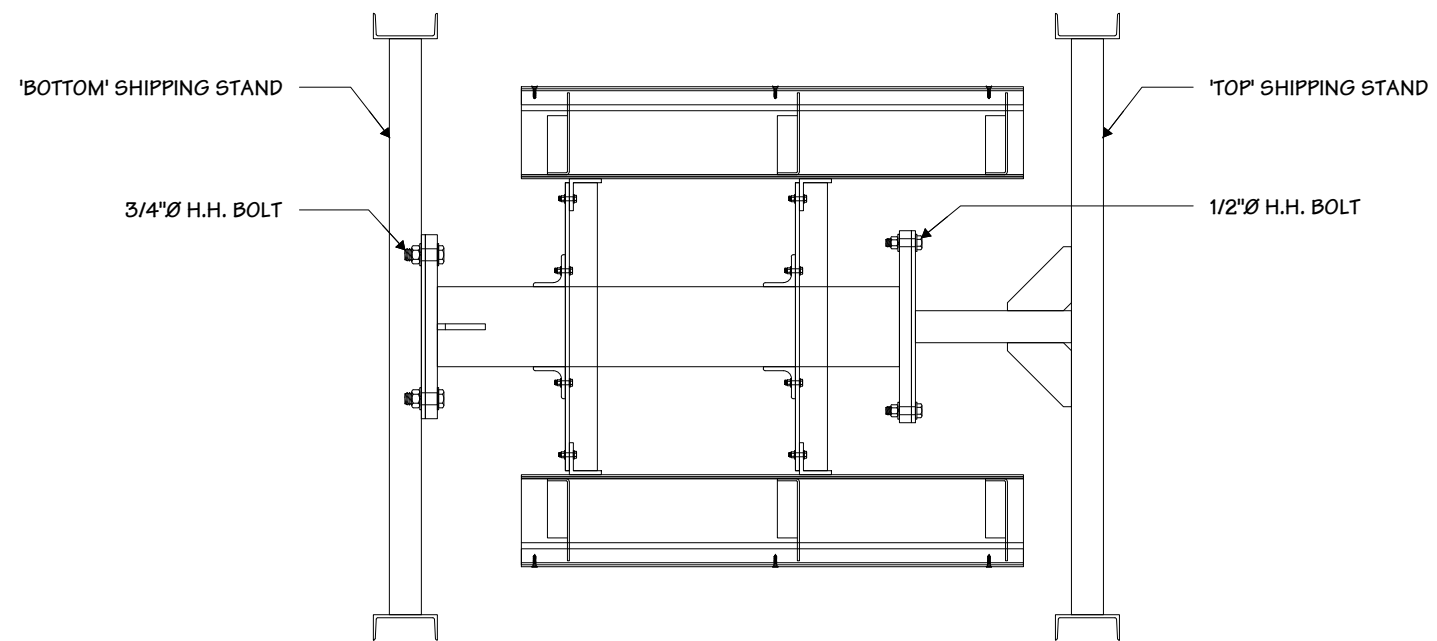
General Sign Specifications

- Interior Exterior
- Single Faced Double Faced
- Non-Illuminated
- Illuminated

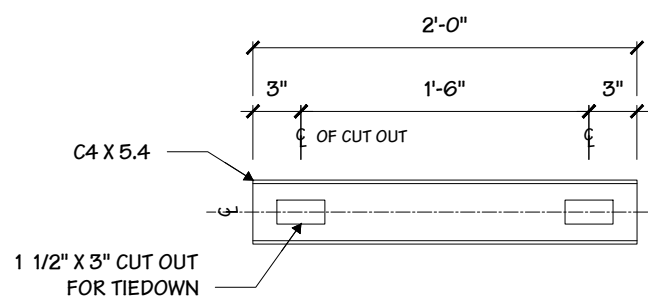
120 Volts 2.0 Amps(+/-)

Location _____

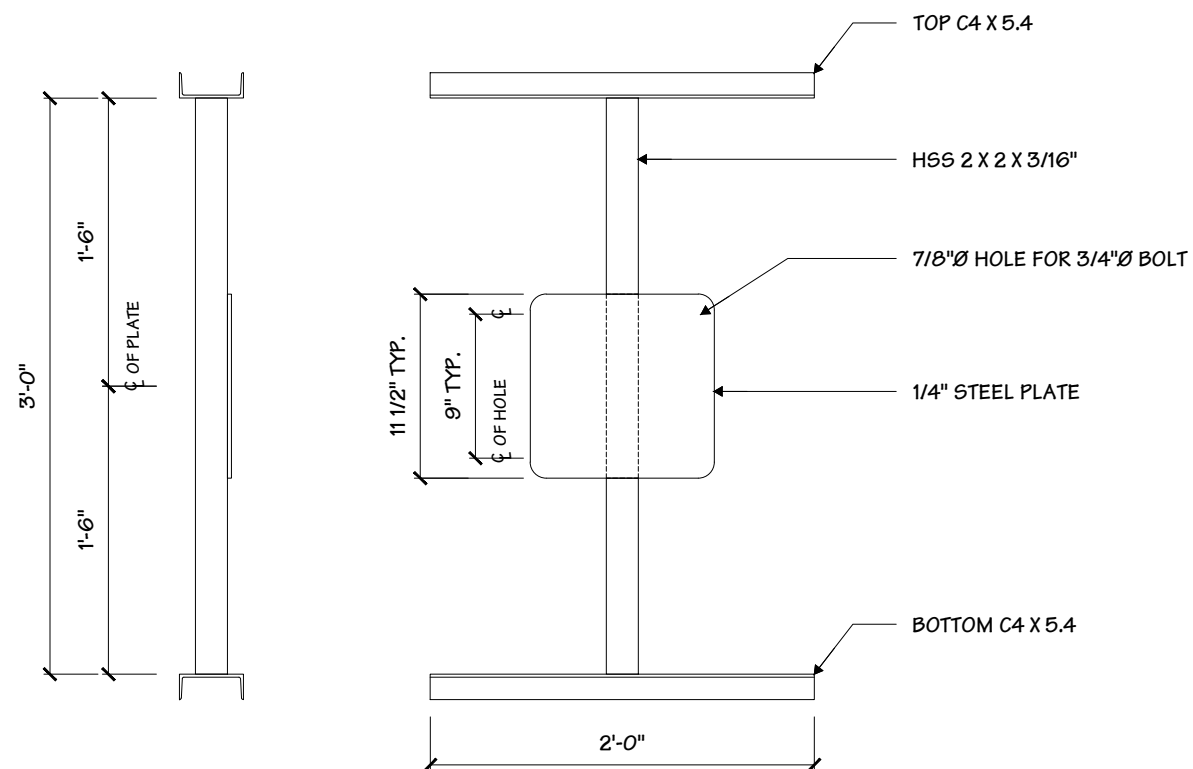
Windspeed **115 MPH / IBC 2012**



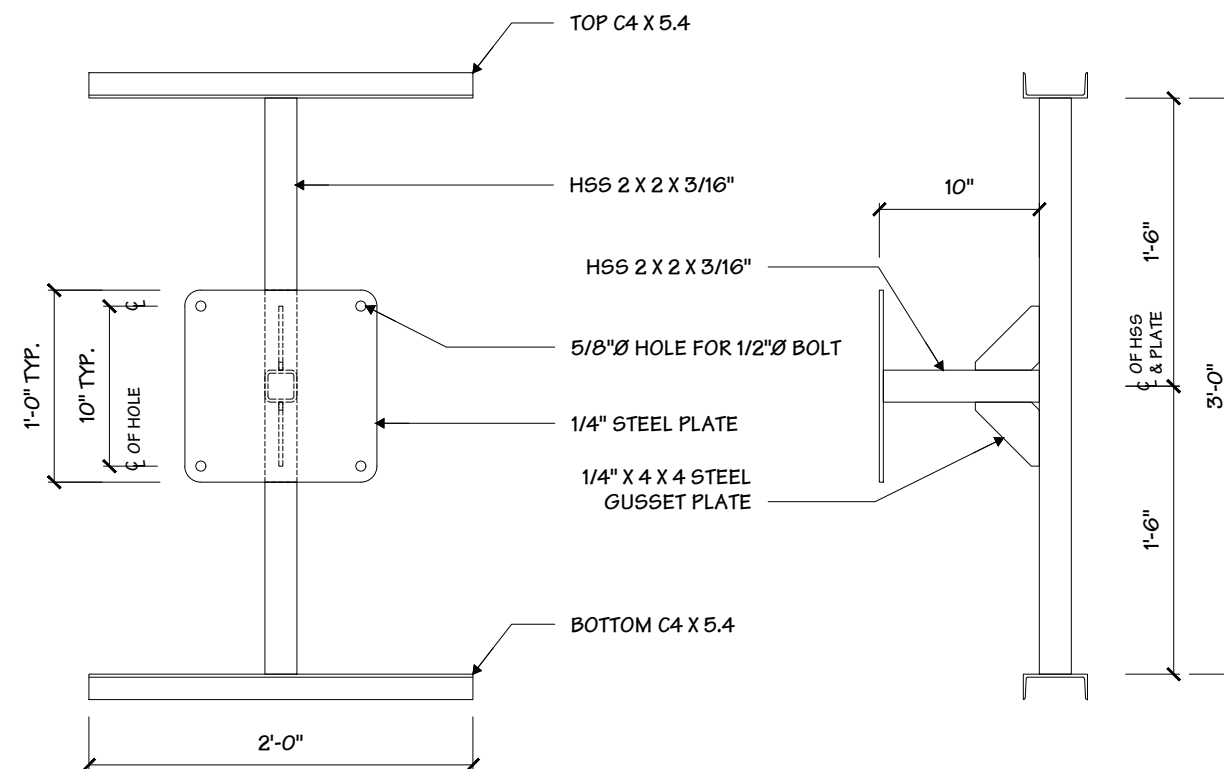
1 SIGN POLE SHIPPING STAND
13 1" = 1' - 0"



4 TOP C4 X 5.4 CHANNEL DETAIL, TYP
13 1" = 1' - 0"



2 'BOTTOM' SHIPPING STAND DETAIL
13 1" = 1' - 0"



3 'TOP' SHIPPING STAND DETAIL
13 1" = 1' - 0"

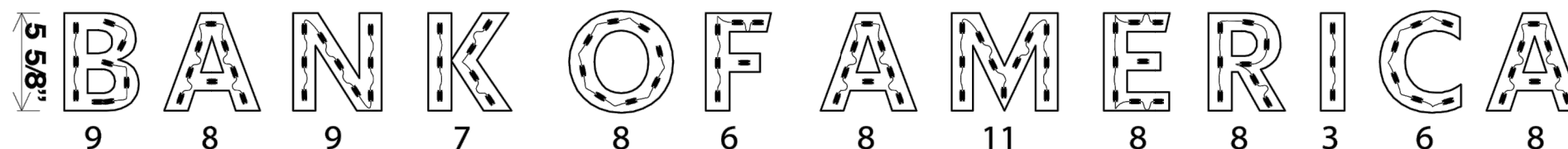
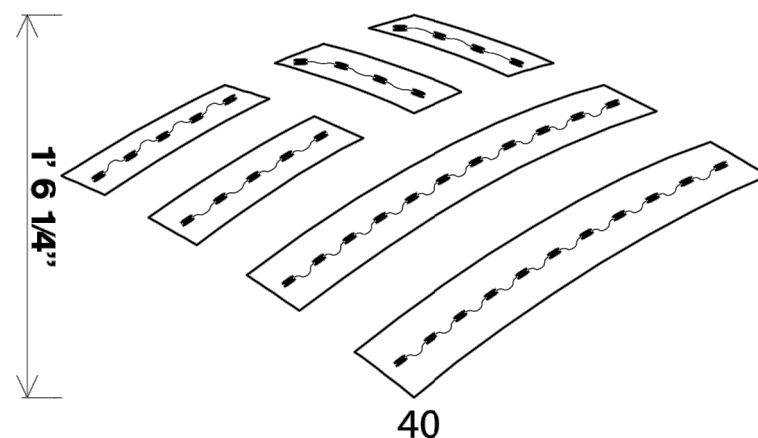
Drawing Revisions	Change
△	05.15.19 DLR CHANGED RED VINYL CALL OUT, MOVED DISCONNECT SWITCH & U.L. LABEL UPDATED LENS ROUTING INSTRUCTIONS
△	08.29.19 TLW UPDATED LED LAYOUT
△	02.06.20 DLR UPDATED CLADDING DUAL LOCK
△	03.16.20 DLR ADDEDD CAISSON FOUNDATION
△	10.29.20 INW LIGHTING UPDATE TO ULTRA MINIS

This document is the sole property of Architectural Graphics, Inc., and all design, manufacturing, reproduction, use and sale rights regarding the same are expressly forbidden. It is submitted under a confidential relationship, for a special purpose, and the recipient, by accepting this document assumes custody and agrees that this document will not be copied or reproduced in whole or in part, nor its contents revealed in any manner or to any person except for the purpose for which it was tendered, nor any special features peculiar to this design be incorporated in other projects.

Code **34765** Type **A**



ULTRA MINI



5.62" Bank Of America

Quantity-2	Can Depth 2"	Modules per Foot 6.1	Total System Watts 65.41W
Date 29 October 2020	Power Supply (2) PS12-60WSL-100-277V	Modules spacing 1.97"	Total LED Watts 55.60W
Email Layouts@genledbrands.com	Power Supply Location Remote	Row Spacing	Illumination Face Lit
Module (278) LS-UMIN-65K-L4-50B			

- 1) **UNLESS OTHERWISE SPECIFIED:** All layouts are for a single face sign or a single set of letters and the depth of the application considered for the layout is 5 inches.
- 2) LED module placement is approximate. AgiLight® recommends the sign manufacturer verify the LED placement and quantity to ensure even illumination and brightness expectations are achieved.
- 3) Estimations are based off the quality of art work and information provided by the customer, this includes: font style, letter height, depth, face material, and any special instructions. Missing information may cause delays in the delivery of estimates, as well as effect product selection, accurate quantities, and brightness.
- 4) For installation instructions of AgiLight® LED systems please refer to www.AgiLight.com under the RESOURCES section or contact an AgiLight® Inside Sales Representative at: +1.866.482.0203

Project Title
BANK OF AMERICA

Date **02.13.19**

AGI EoR **M. SMITH**
Lead Drafter **DLR**
Drawn By **KKJ**
Project Mgr. **L. CLAIBORNE**

General Sign Specifications

Interior Exterior
 Single Faced Double Faced
 Non-Illuminated
 Illuminated
120 Volts **2.0** Amps(+/-)
Location _____
Windspeed **115 MPH / IBC 2012**

Drawing Revisions	Change	Date	Drawn By
1	CHANGED RED VINYL CALL OUT, MOVED DISCONNECT SWITCH & U.L. LABEL UPDATED LENS ROUTING INSTRUCTIONS	05.15.19	DLR
2	UPDATED LED LAYOUT	08.29.19	TLW
3	UPDATED CLADDING DUAL LOCK	02.06.20	DLR
4	ADDEDD CAISSON FOUNDATION	03.16.20	DLR
5	LIGHTING UPDATE TO ULTRA MINIS	10.29.20	INW

This document is the sole property of Architectural Graphics, Inc., and all design, manufacturing, reproduction, use and sale rights regarding the same are expressly forbidden. It is submitted under a confidential relationship, for a special purpose, and the recipient, by accepting this document assumes custody and agrees that this document will not be copied or reproduced in whole or in part, nor its contents revealed in any manner or to any person except for the purpose for which it was tendered, nor any special features peculiar to this design be incorporated in other projects.

Code **34765** Type **A**

Sign Type **B2ng** PG. #: **14**