

# **NAVY FEDERAL CREDIT UNION AREA 8 POND PAVILION PROJECT**

TOWN OF VIENNA  
BOARD OF ARCHITECTURAL REVIEW

MARCH 14, 2025



Navy Federal Credit Union intends to construct a 1,220 sqft one-story, green-roofed, pavilion on the edge of the retention pond on the north side of the HQ1 property at 820 Follin Lane SE. An 810 sqft permeable-paver patio with landscape beds and stone seating walls will also be constructed to serve as a transition point between the existing sidewalk and the pavilion. The pavilion will serve Navy Federal Credit Union by providing an exterior space for meetings and functions of small to medium-sized groups.





VICINITY MAP



# AREA 8 POND PAVILION CONCEPT VICINITY MAP

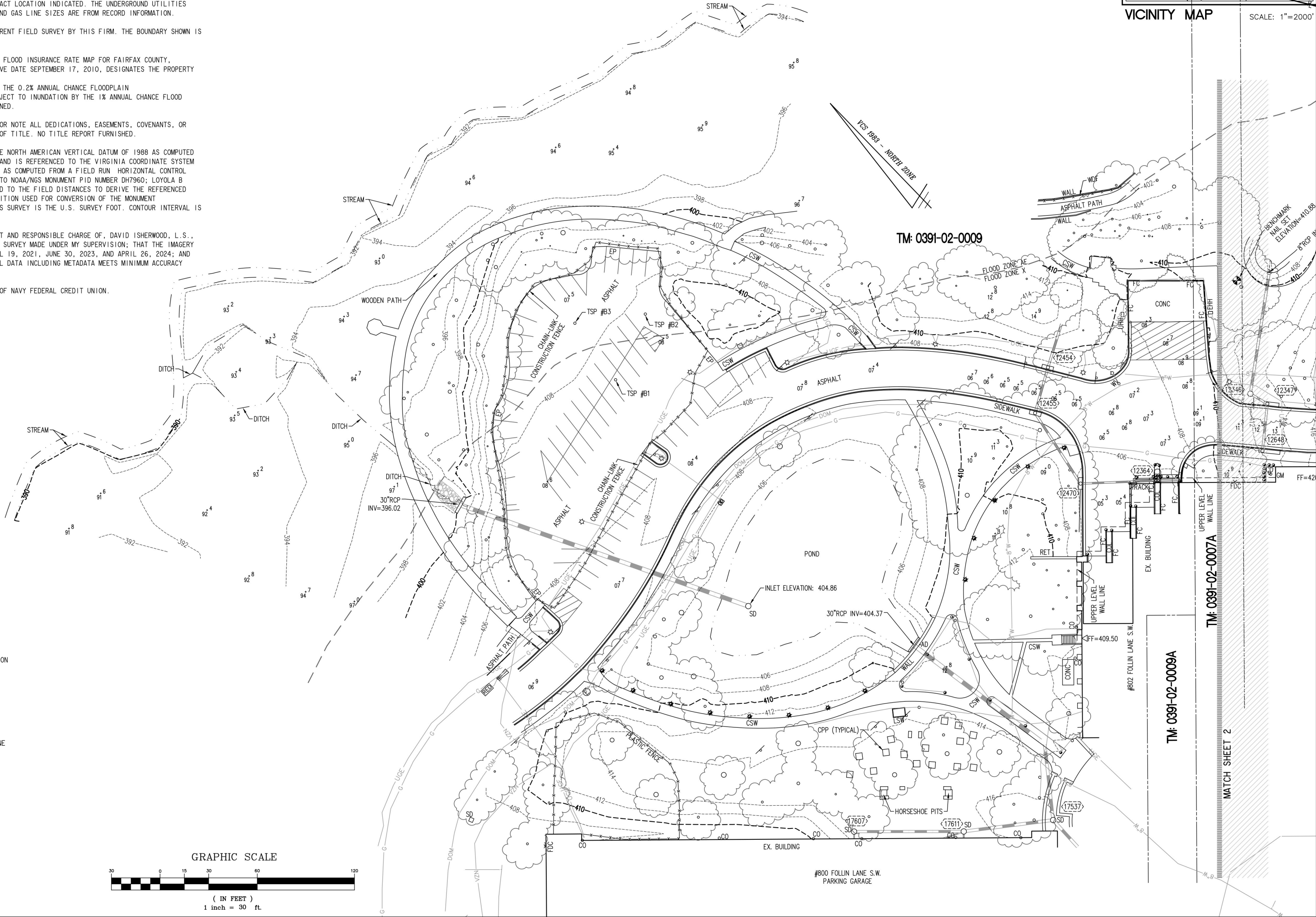
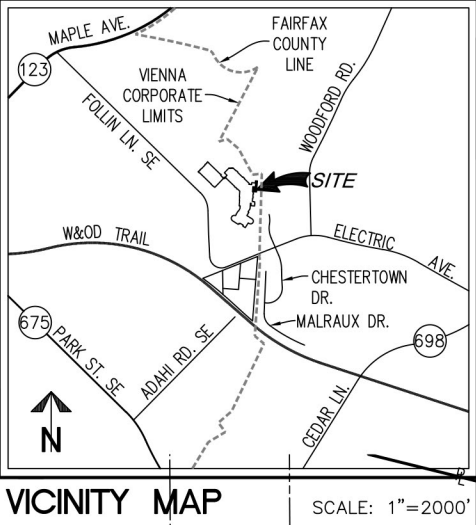
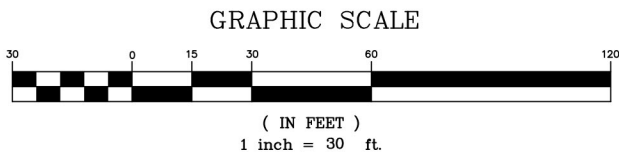


NOTES:

1. THE AREA SHOWN HEREON IS A PORTION OF THE PROPERTIES DESIGNATED BY FAIRFAX COUNTY, VIRGINIA, AS TAX MAP REFERENCE NUMBERS 0391-02-0007, 0007A AND 0009 AND ARE ZONED CMP PER FAIRFAX COUNTY ZONING MAP.
2. THE PROPERTIES ARE NOW IN THE NAME OF NAVY FEDERAL CREDIT UNION AS RECORDED IN DEED BOOK 4000 AT PAGE 72 AMONG THE LAND RECORDS OF FAIRFAX COUNTY, VIRGINIA.
3. THIS LIMITED TOPOGRAPHIC SURVEY IS BASED ON A CURRENT FIELD SURVEY BY THIS FIRM. THIS SURVEY IS SOLELY INTENDED TO REPRESENT TOPOGRAPHIC MAPPING IN THE AREA SHOWN.
4. THIS PLAT AND THE SURVEY UPON WHICH IT IS BASED SHOWS ONLY THOSE IMPROVEMENTS THAT ARE OBSERVABLE AND CAN BE LOCATED USING NORMAL SURVEY METHODS. THE UNDERGROUND UTILITIES SHOWN HAVE BEEN LOCATED FROM FIELD SURVEY INFORMATION, MISS UTILITY MARKINGS AND EXISTING RECORDS. THERE ARE NO GUARANTEES, EITHER EXPRESS OR IMPLIED, THAT THE UNDERGROUND UTILITIES SHOWN COMPRISE ALL SUCH UTILITIES IN THE AREA, EITHER IN SERVICE OR ABANDONED, OR THAT THE UNDERGROUND UTILITIES SHOWN ARE IN THE EXACT LOCATION INDICATED. THE UNDERGROUND UTILITIES HAVE NOT BEEN PHYSICALLY LOCATED. WATER AND GAS LINE SIZES ARE FROM RECORD INFORMATION.
5. THIS TOPOGRAPHIC SURVEY IS BASED ON A CURRENT FIELD SURVEY BY THIS FIRM. THE BOUNDARY SHOWN IS BASED ON EXISTING RECORDS.
6. THE FEDERAL EMERGENCY MANAGEMENT AGENCY'S FLOOD INSURANCE RATE MAP FOR FAIRFAX COUNTY, VIRGINIA, MAP NUMBER 51059C0165E, EFFECTIVE DATE SEPTEMBER 17, 2010, DESIGNATES THE PROPERTY AS BEING IN THE FOLLOWING ZONES:
  - ZONE X, AREAS DETERMINED TO BE OUTSIDE THE 0.2% ANNUAL CHANCE FLOODPLAIN
  - ZONE AE, SPECIAL FLOOD HAZARD AREA SUBJECT TO INUNDATION BY THE 1% ANNUAL CHANCE FLOOD WITH THE BASE FLOOD ELEVATIONS DETERMINED.
7. THIS SURVEY DOES NOT PURPORT TO SHOW AND/OR NOTE ALL DEDICATIONS, EASEMENTS, COVENANTS, OR RESTRICTIONS THAT MAY EXIST IN THE CHAIN OF TITLE. NO TITLE REPORT FURNISHED.
8. THE SITE SHOWN HEREON IS REFERENCED TO THE NORTH AMERICAN VERTICAL DATUM OF 1988 AS COMPUTED FROM A FIELD RUN VERTICAL CONTROL SURVEY AND IS REFERENCED TO THE VIRGINIA COORDINATE SYSTEM OF 1983, [NAD 83(2011) (EPOCH:2010.0000)] AS COMPUTED FROM A FIELD RUN HORIZONTAL CONTROL SURVEY THAT TIES THE BENCHMARK(S) SHOWN TO NOAA/NGS MONUMENT PID NUMBER DH7960; LOYOLA B COOP CORRS ARE THE COMBINED FACTOR APPLIED TO THE FIELD DISTANCES TO DERIVE THE REFERENCED COORDINATES IS 0.99994487. THE FOOT DEFINITION USED FOR CONVERSION OF THE MONUMENT COORDINATES AND IN THE PERFORMANCE OF THIS SURVEY IS THE U.S. SURVEY FOOT. CONTOUR INTERVAL IS TWO FEET.
9. THIS SURVEY WAS COMPLETED UNDER THE DIRECT AND RESPONSIBLE CHARGE OF, DAVID ISHERWOOD, L.S., FROM AN ACTUAL (X) GROUND OR ( ) AIRBORNE SURVEY MADE UNDER MY SUPERVISION; THAT THE IMAGERY AND/OR ORIGINAL DATA WAS OBTAINED ON APRIL 19, 2021, JUNE 30, 2023, AND APRIL 26, 2024; AND THAT THIS PLAT, MAP, OR DIGITAL GEOSPATIAL DATA INCLUDING METADATA MEETS MINIMUM ACCURACY STANDARDS UNLESS OTHERWISE NOTED.
10. THIS SURVEY WAS PERFORMED AT THE REQUEST OF NAVY FEDERAL CREDIT UNION.

LEGEND

- AD..... AREA DRAIN  
BH..... BORE HOLE  
CLF..... CHAIN-LINK FENCE  
COL..... COLUMN  
CPP..... CONCRETE PICNIC TABLE PAD  
CS..... COVERED STOOP  
CSW..... CONCRETE SIDEWALK  
CO..... CLEANOUT  
CONC..... CONCRETE  
EHH..... ELECTRIC HANDHOLE  
EP..... EDGE OF PAVEMENT  
FC..... HEADER CURB  
FDC..... FIRE DEPARTMENT CONNECTION  
FF..... FIRST/FINISH FLOOR ELEVATION  
INV..... INVERT  
LSW..... LANDSCAPE WALL  
MW..... MONITORING WELL  
PVC..... PLASTIC PIPE  
RCP..... REINFORCED CONCRETE PIPE  
RET..... RETAINING WALL  
SD..... STORM SEWER STRUCTURE  
TSP..... TEST PIT  
UHH..... UTILITY HANDHOLE  
UMH..... UTILITY MANHOLE  
WDF..... WOODEN FENCE  
WV..... WATER VALVE  
△..... DOORWAY/ENTRANCE  
⋈..... LIGHT POLE  
X..... FENCE  
○..... TREE  
○..... LIMITS OF TREE CANOPY/VEGETATION  
—..... CURB AND GUTTER  
○..... BOLLARD  
○..... SPOT ELEVATION  
○..... SIGN  
Ⓢ..... ELECTRIC MANHOLE  
—UNK..... UNKNOWN UNDERGROUND LINE  
—UGE..... UNDERGROUND ELECTRIC LINE  
—DGM..... UNDERGROUND DOMINION LINE  
—UGCM..... UNDERGROUND COMMUNICATIONS LINE  
—ATT..... AT&T COMMUNICATIONS LINE  
—VZN..... VERIZON COMMUNICATIONS LINE  
—LTC..... LTC COMMUNICATIONS LINE  
—CMC..... COMCAST CABLE LINE  
—W..... UNDERGROUND WATER LINE  
—G..... UNDERGROUND GAS LINE  
●..... MONITORING WELL



LIMITED TOPOGRAPHIC SURVEY

ON THE PROPERTY OF

NAVY FEDERAL CREDIT UNION

TOWN OF VIENNA  
FAIRFAX COUNTY, VIRGINIA

DRAFT

REVISIONS

NO.	DESCRIPTION	DATE

WALTER L. PHILLIPS  
INCORPORATED  
ENGINEERS • SURVEYORS • PLANNERS  
LANDSCAPE ARCHITECTS • ARBORISTS  
207 PARK AVENUE  
FALLS CHURCH, VIRGINIA 22046  
(703) 532-6163 Fax (703) 533-1301  
www.WLPINC.com

DRAWN: PMW

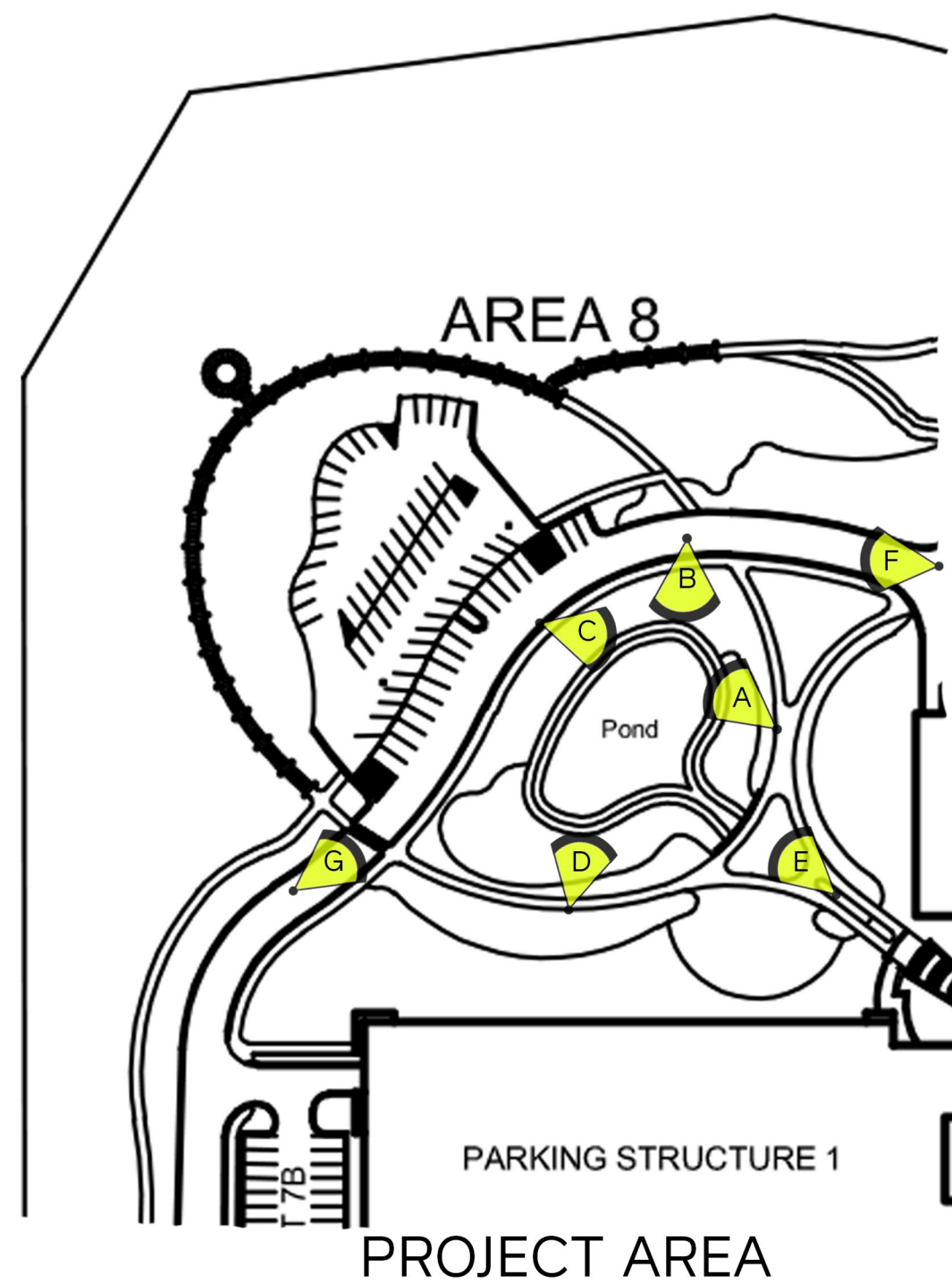
DATE: APRIL 26, 2024

SCALE: 1"=30'



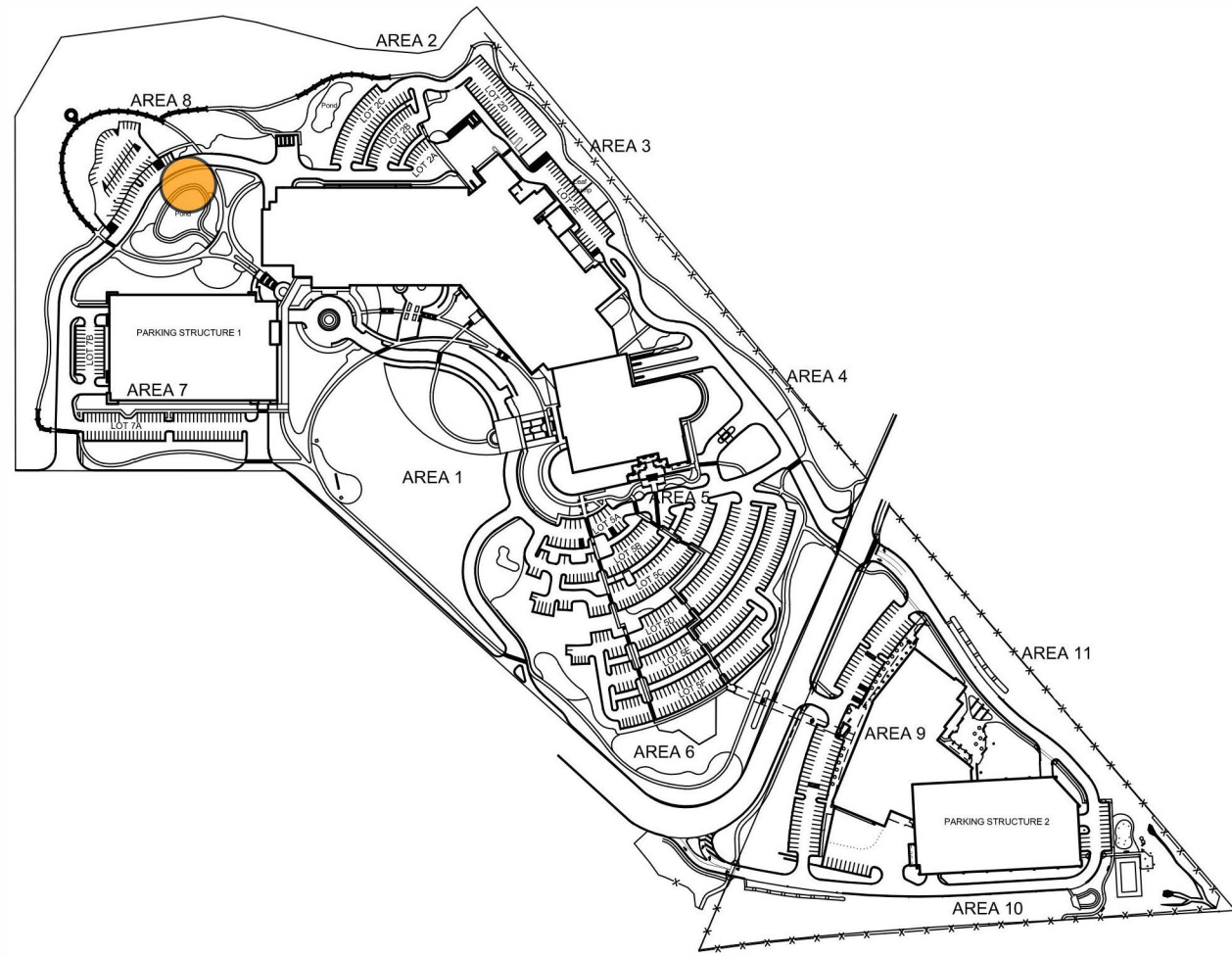
AREA 8 POND PAVILION CONCEPT  
SURVEYED SITE PLAN





# AREA 8 POND PAVILION CONCEPT SITE PHOTOS

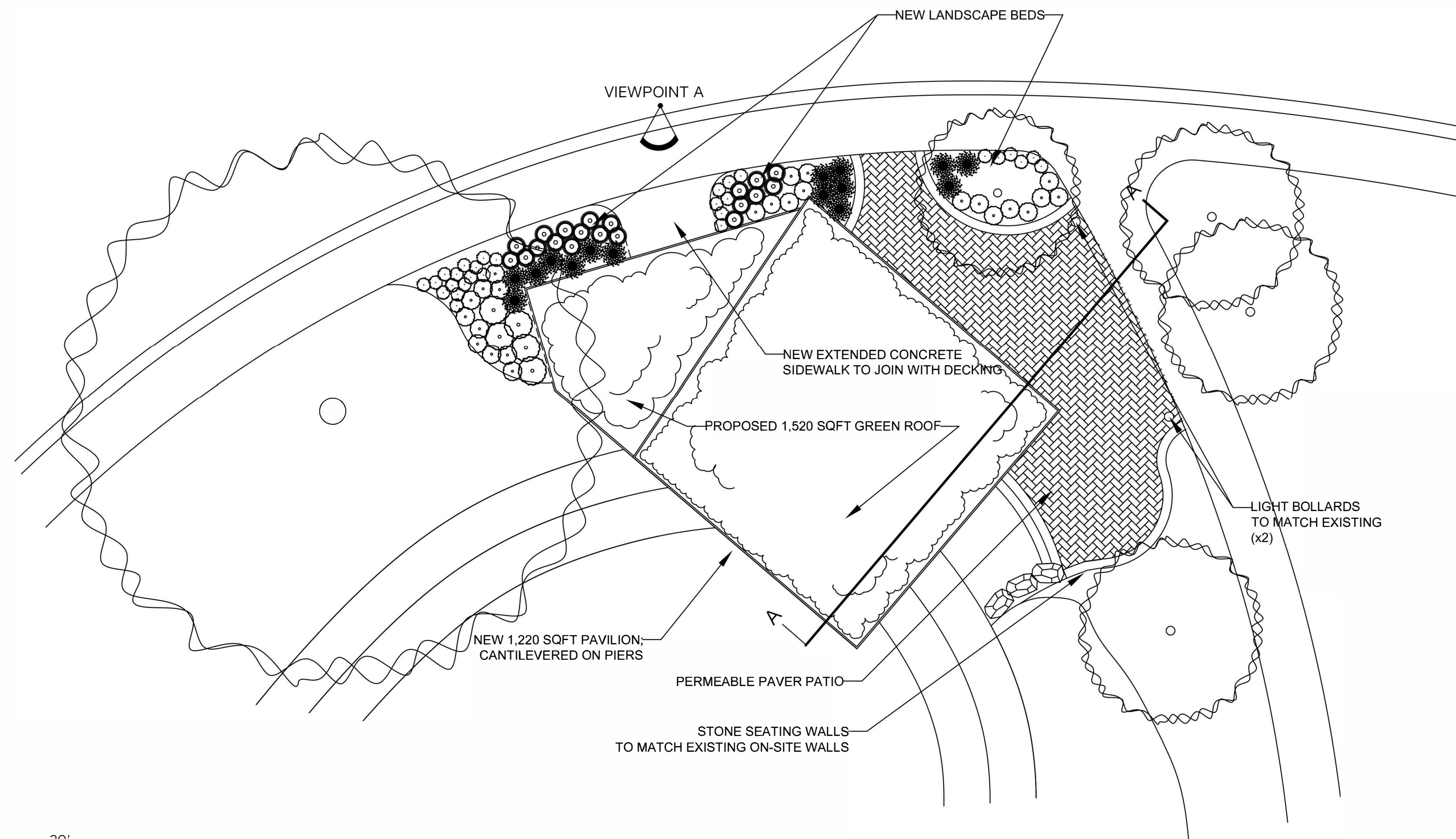




PROJECT AREA

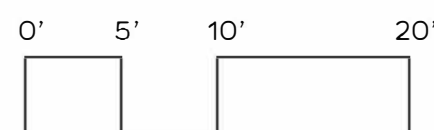


VIEWPOINT A



SITE PLAN

SCALE: 1"=10'



AREA 8 POND PAVILION CONCEPT  
PROPOSED SITE PLAN

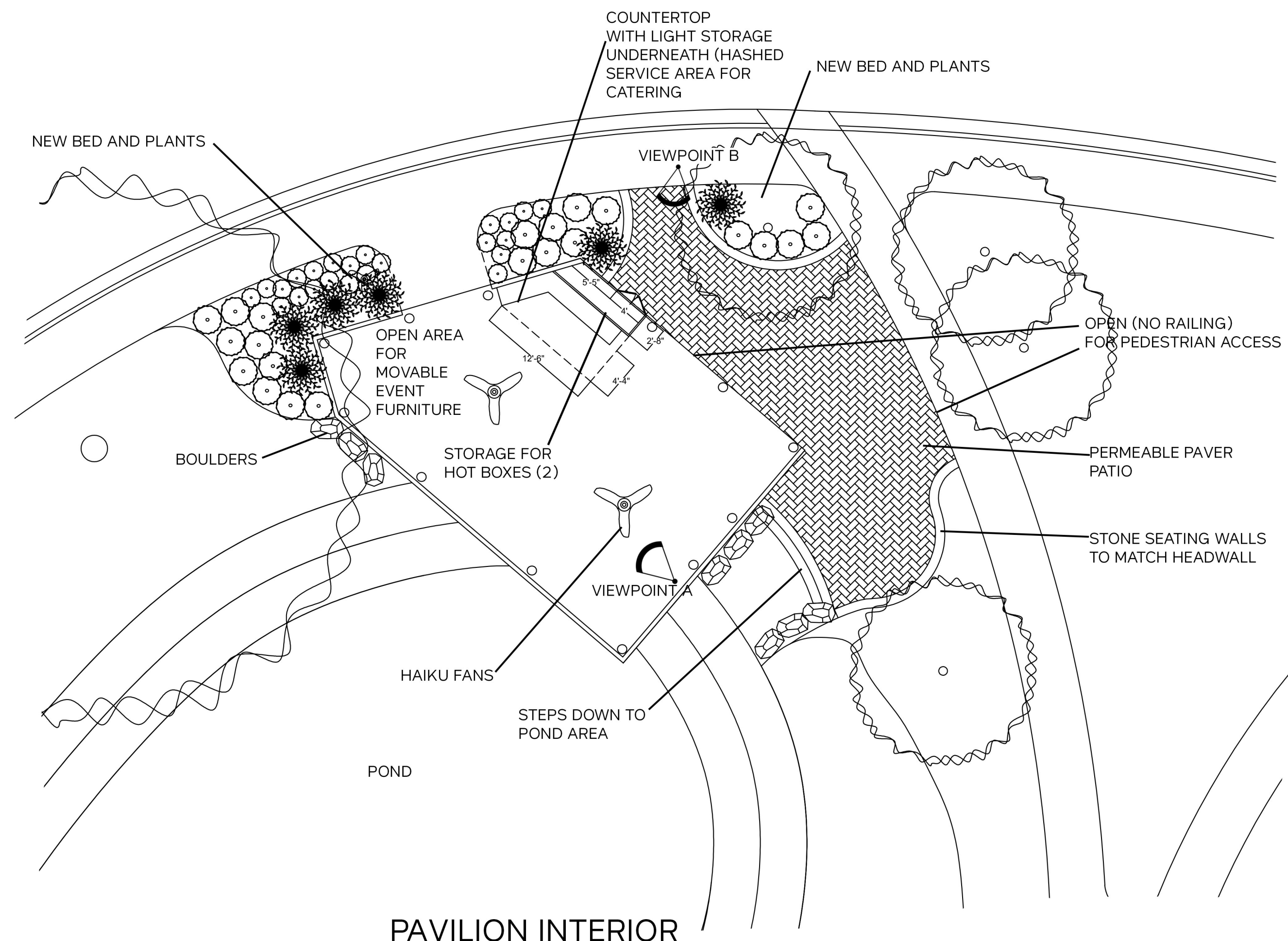




VIEWPOINT A

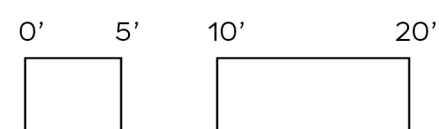


VIEWPOINT B



PAVILION INTERIOR

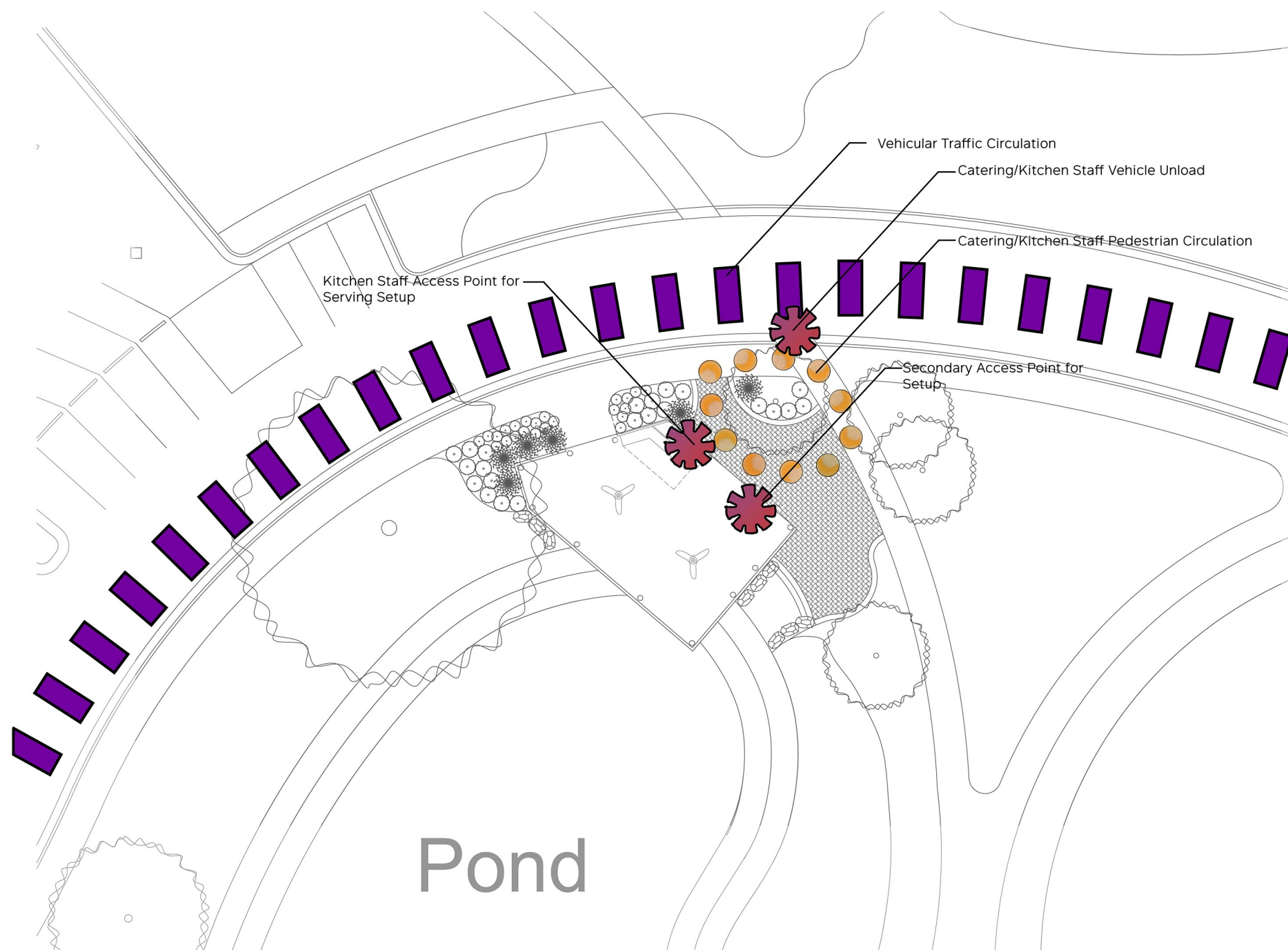
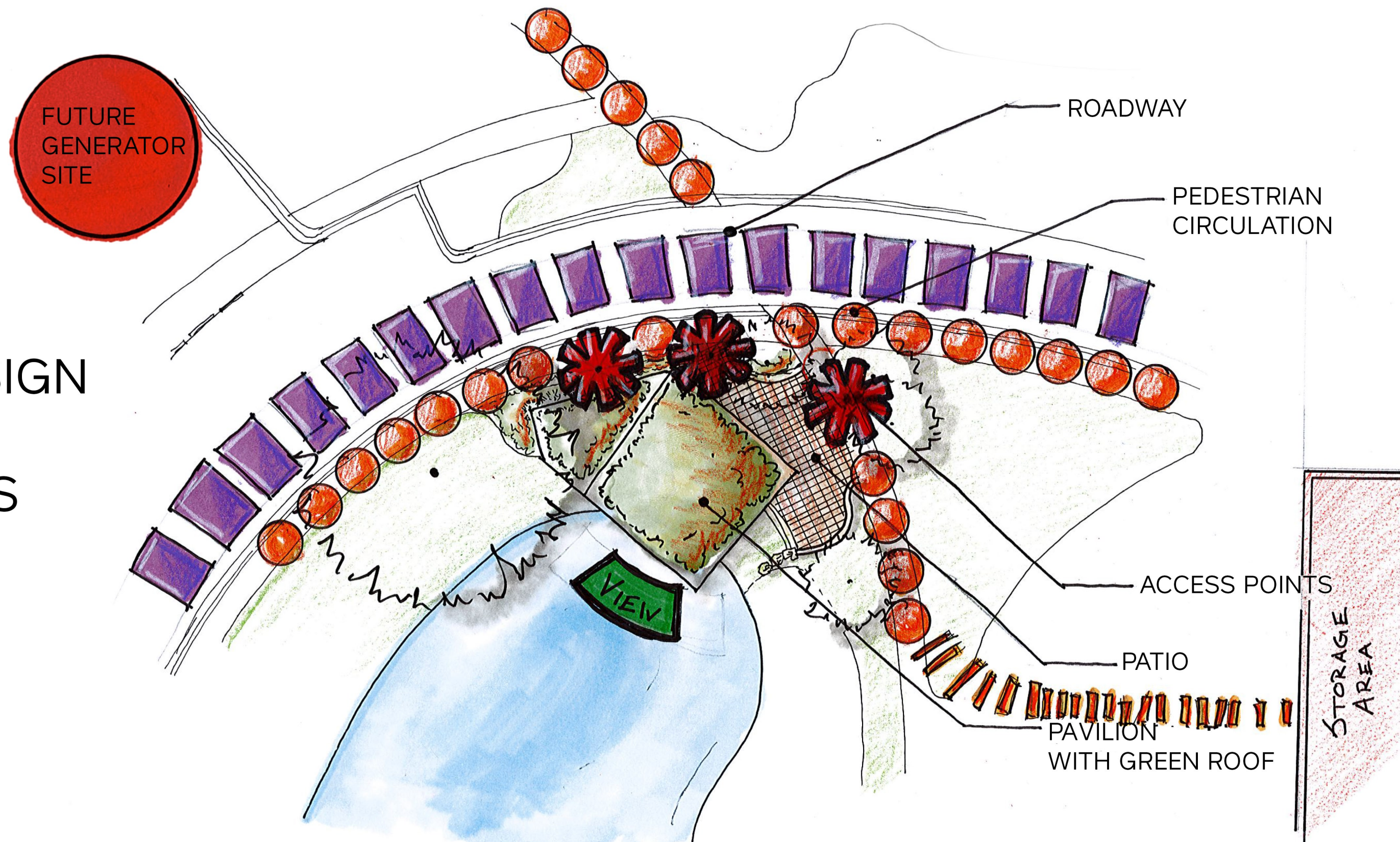
SCALE: 1"=10'



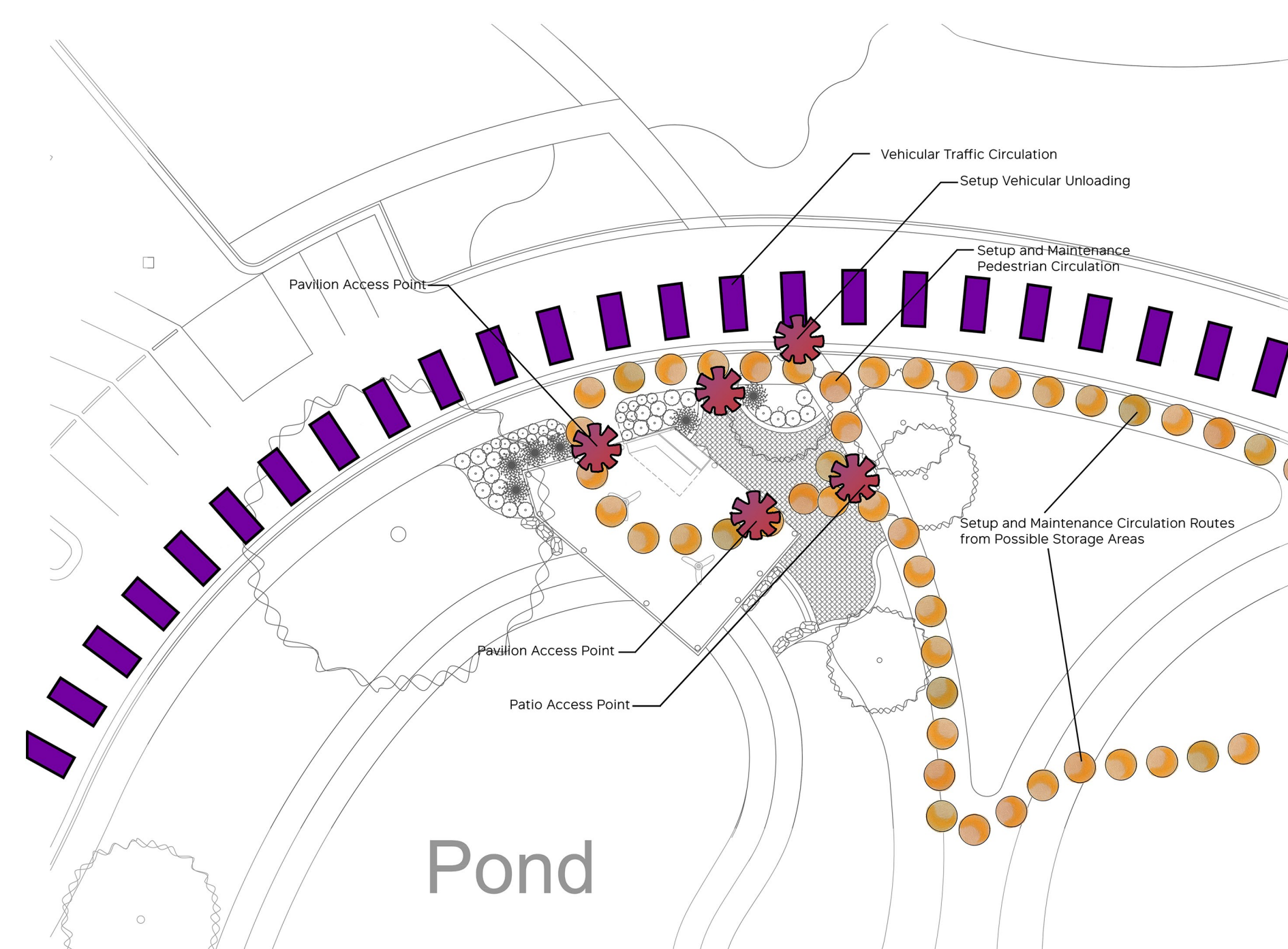
AREA 8 POND PAVILION CONCEPT  
INTERIOR LAYOUT AND PATIO



# SITE DESIGN LAYOUT ANALYSIS



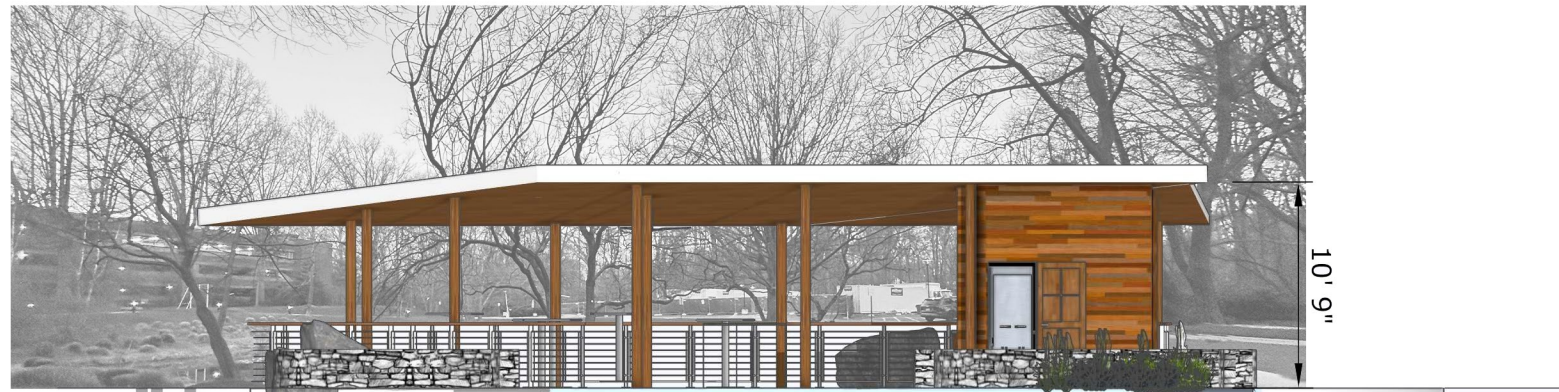
KITCHEN STAFF AND PREP CIRCULATION



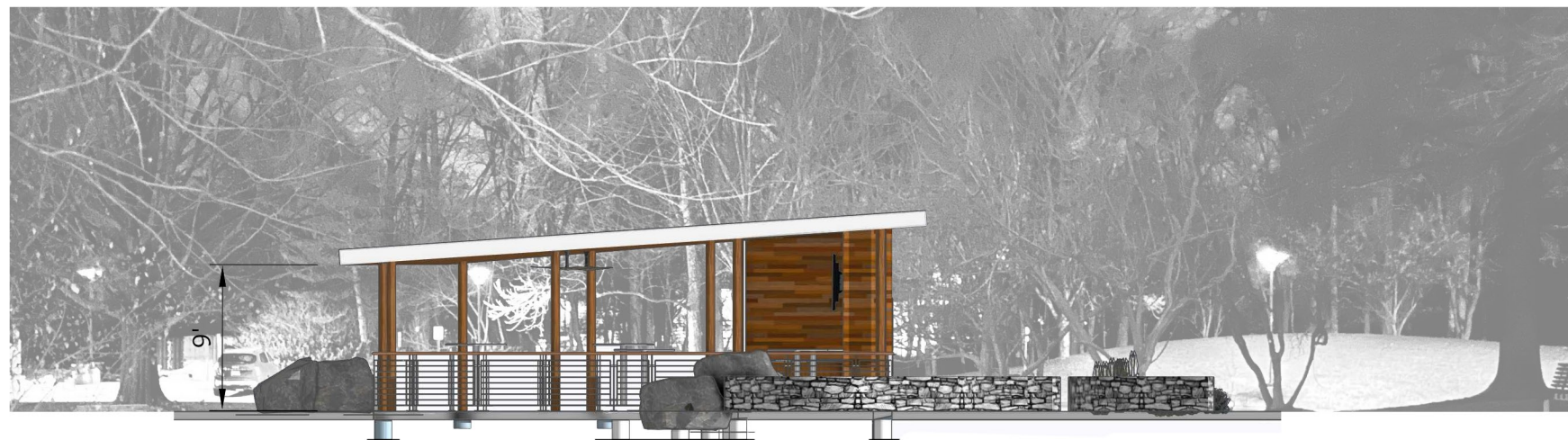
SETUP AND MAINTENANCE CIRUCLATION

## AREA 8 POND PAVILION CONCEPT PROJECT DESIGN TRAFFIC FLOW ANALYSIS





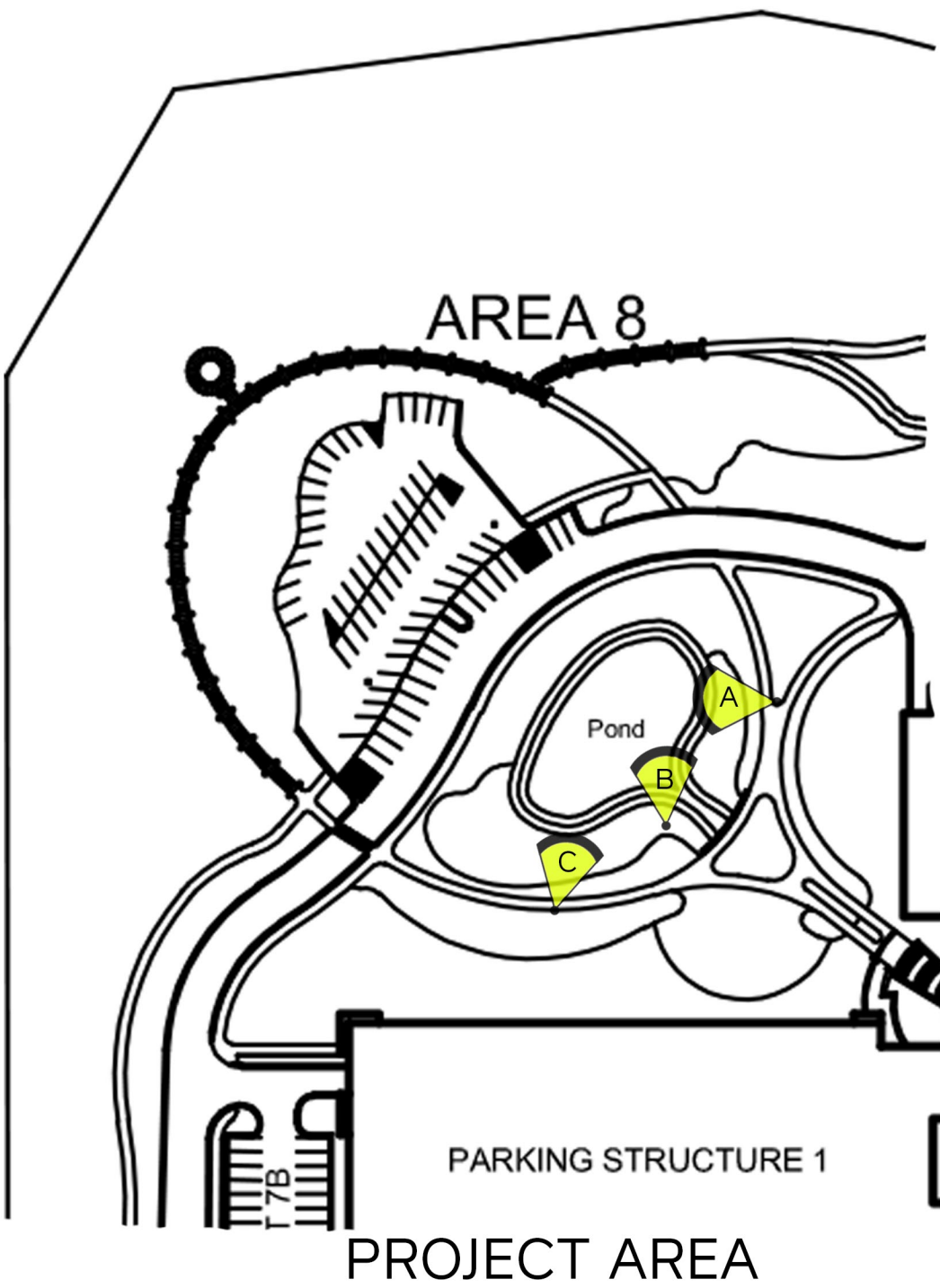
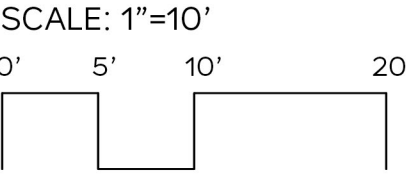
ELEVATION A



ELEVATION B

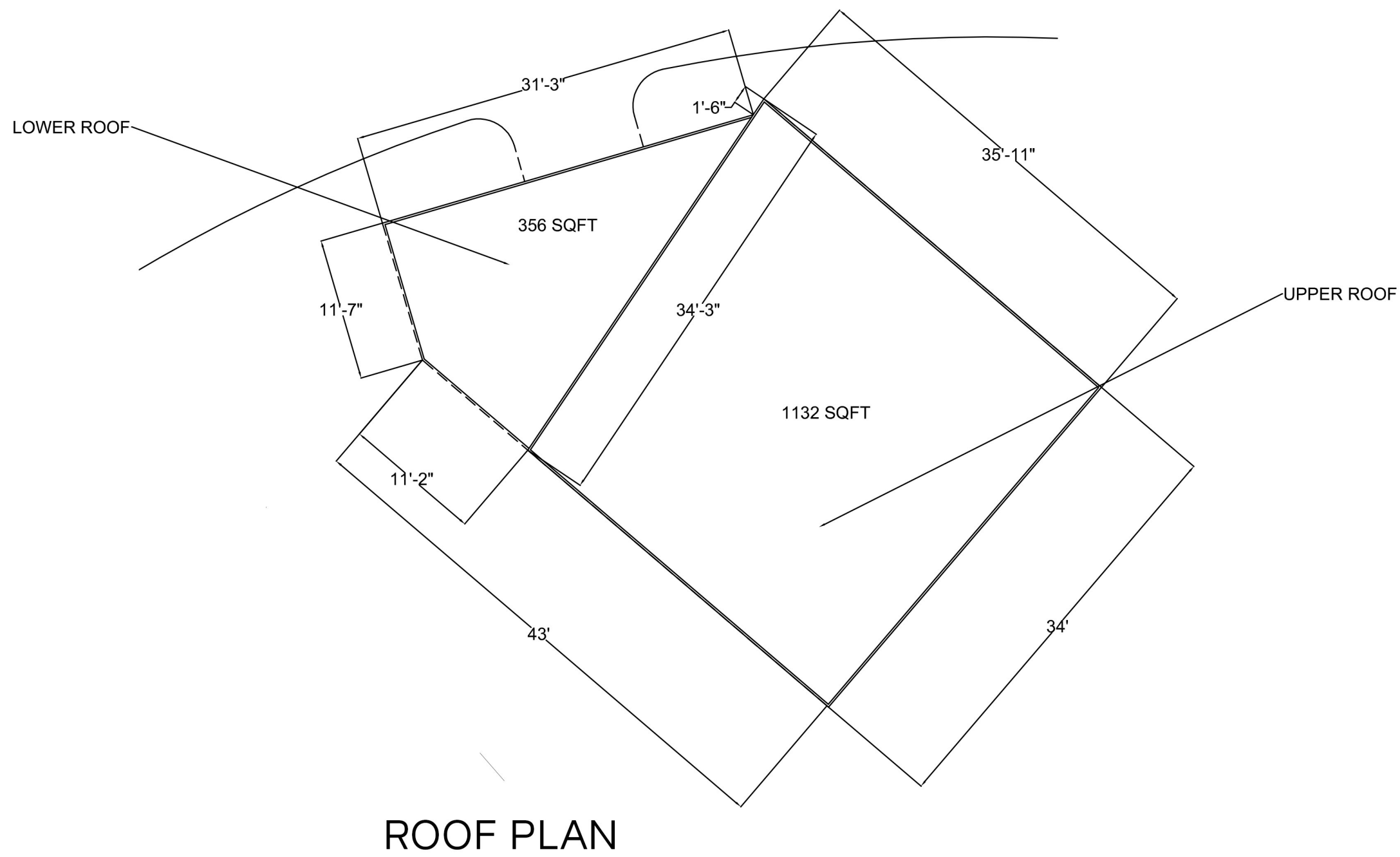


ELEVATION C

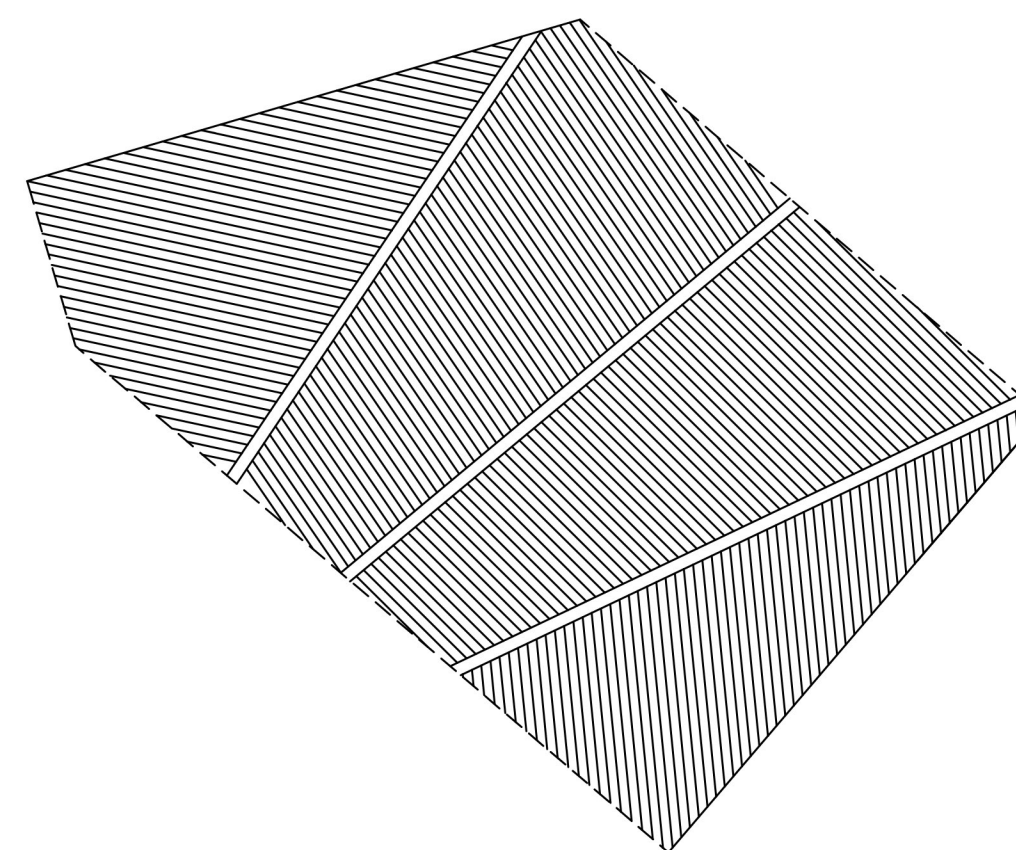


AREA 8 POND PAVILION CONCEPT  
ELEVATIONS

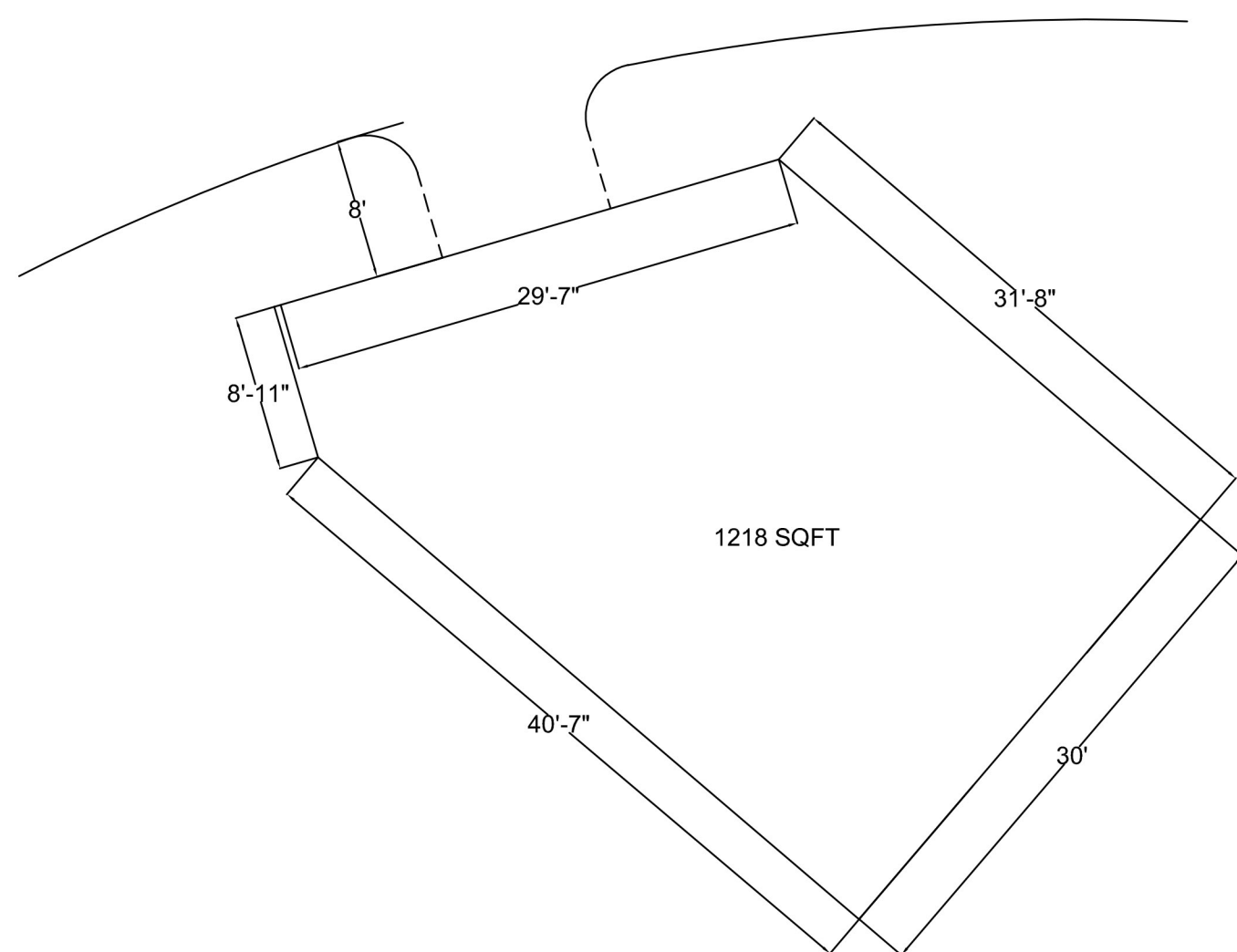




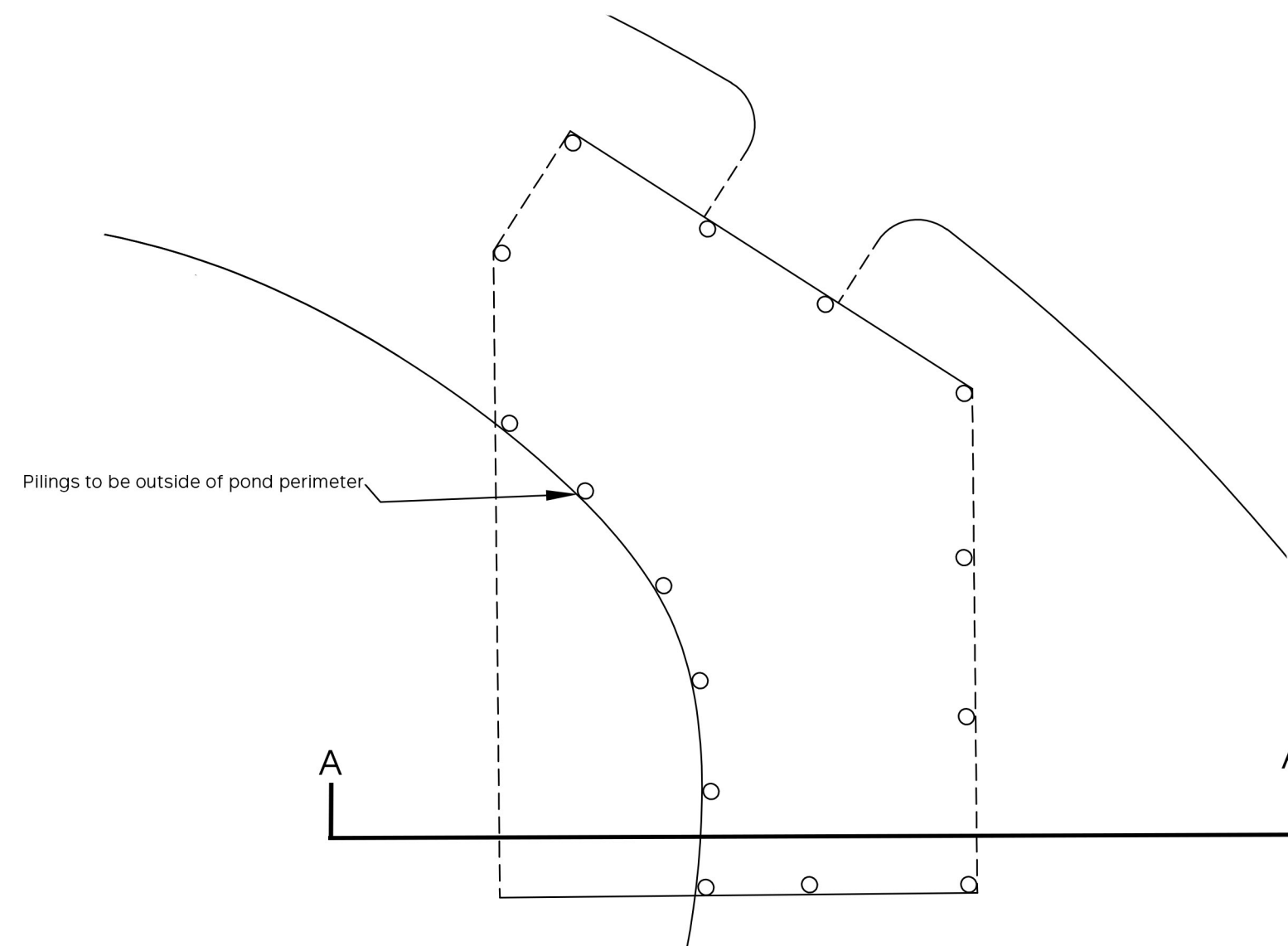
ROOF PLAN



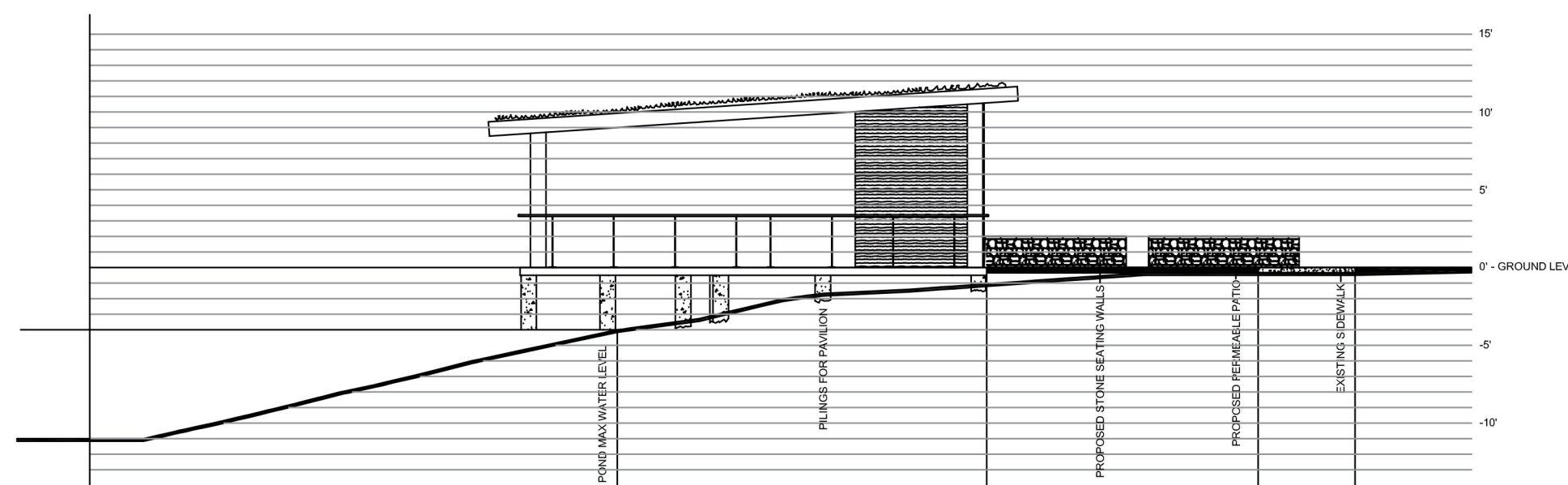
CONCEPTUAL DECKING PLAN



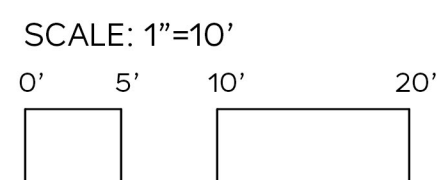
FLOOR PLAN



CONCEPTUAL PILING LOCATIONS

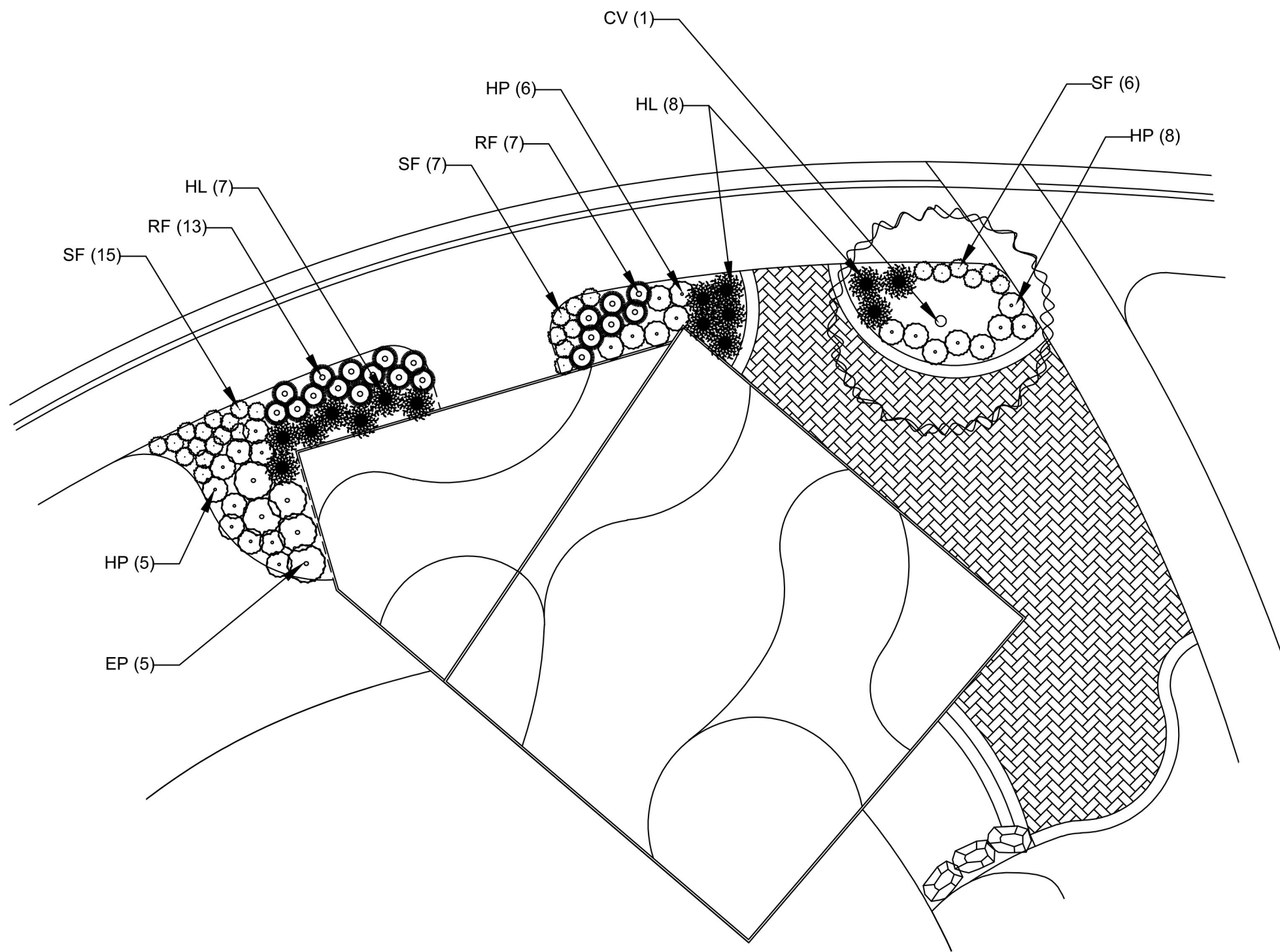


CONCEPTUAL ELEVATION A-A  
REFER TO PAGE 2 FOR REFERENCE



# AREA 8 POND PAVILION CONCEPT BASIC PAVILION MEASUREMENTS



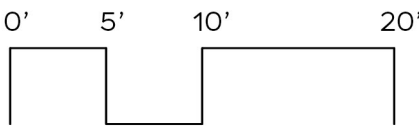


PLANTING BED PLAN CONCEPT

PLANT SCHEDULE				
ID	COMMON NAME	SCIENTIFIC NAME	SIZE	QTY
CV	White Fringetree	<i>Chioanthus virginicus</i>	B&B	1
EP	Joe Pye Weed	<i>Eutrochium purpureum</i>	15 GAL	5
HL	Halberd-Leaved Rose Mallow	<i>Hibiscus laevis</i>	15 GAL	15
HP	Common St. John's Wort	<i>Hypericum perforatum</i>	5 GAL	19
RF	Orange Coneflower	<i>Rudbeckia fulgida</i>	1 GAL	20
SF	Victoria Blue Salvia	<i>Salvia forinacea 'Victoria Blue'</i>	1 GAL	28

GREEN ROOF PLANT SCHEDULE					
ID	COMMON NAME	SCIENTIFIC NAME	SIZE	SPACING	QTY
SA	White Stonecrop	<i>Sedum album 'Coral Carpet'</i>	plug	24"	330 sqft (100)
SG	Summer Glory Sedum	<i>Sedum spurium 'Summer Glory'</i>	plug	6"	200 sqft (800)
SM	Japanese Stonecrop	<i>Sedum makinoi 'Variegata'</i>	plug	12"	425 sqft (425)
SO	Oregon Stonecrop	<i>Sedum oreganum</i>	plug	18"	330 sqft (200)
SS	Tasteless Stonecrop	<i>Sedum sexangulare</i>	plug	12"	220 sqft (220)





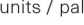

SCALE: 1"=10'

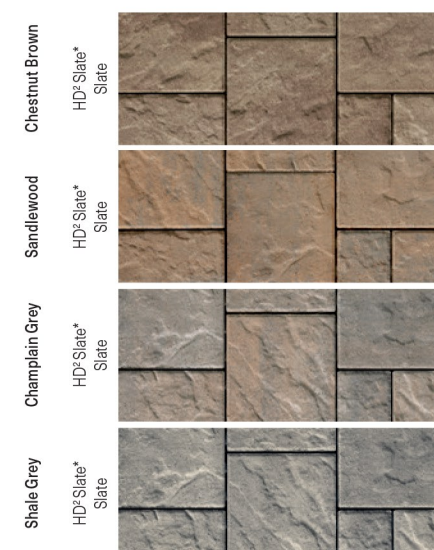
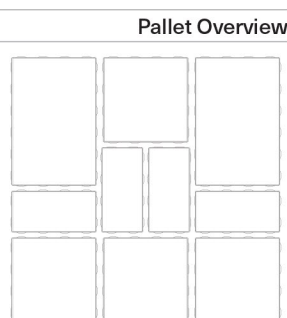


GREEN ROOF PLANTING PLAN CONCEPT

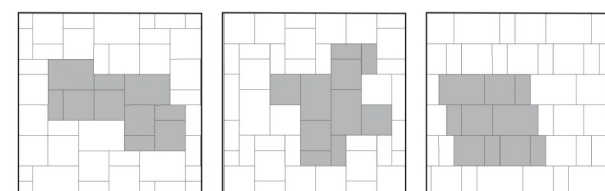




Specifications per pallet		Imperial	Metric
<b>A</b>  32 units / pallet	Product dimension (L x W x H) 	6 1/2' x 13 x 3 1/2'	165 x 330 x 80
	Product dimension (L x W x H) 	13 x 13 x 3 1/2'	330 x 330 x 80
	Product dimension (L x W x H) 	19 1/2' x 13 x 3 1/2'	495 x 330 x 80
<b>B</b>  32 units / pallet	Cubing	84.96 ft <sup>3</sup>	7.90 m <sup>3</sup>
	Approx. Weight	3 246 lbs	1 472 kg
	Number of rows	8	
<b>C</b>  16 units / pallet	Coverage per row	10.62 ft <sup>2</sup>	0.99 m <sup>2</sup>
	Lin. coverage per row	9.75 lin. ft	2.97 lin. m



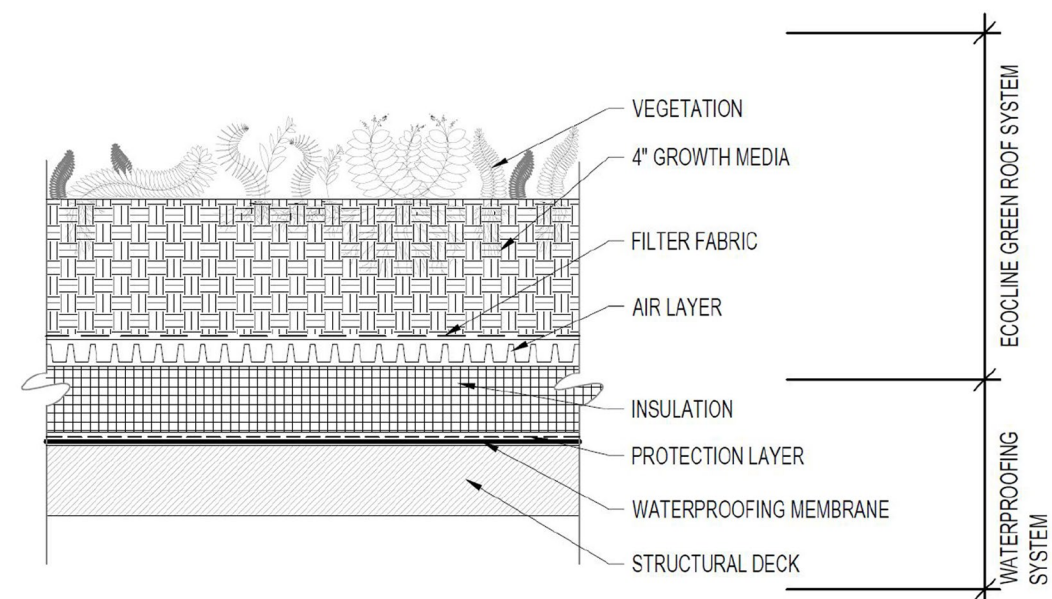
## 01 | Modular      02 | Modular      03 | Linear



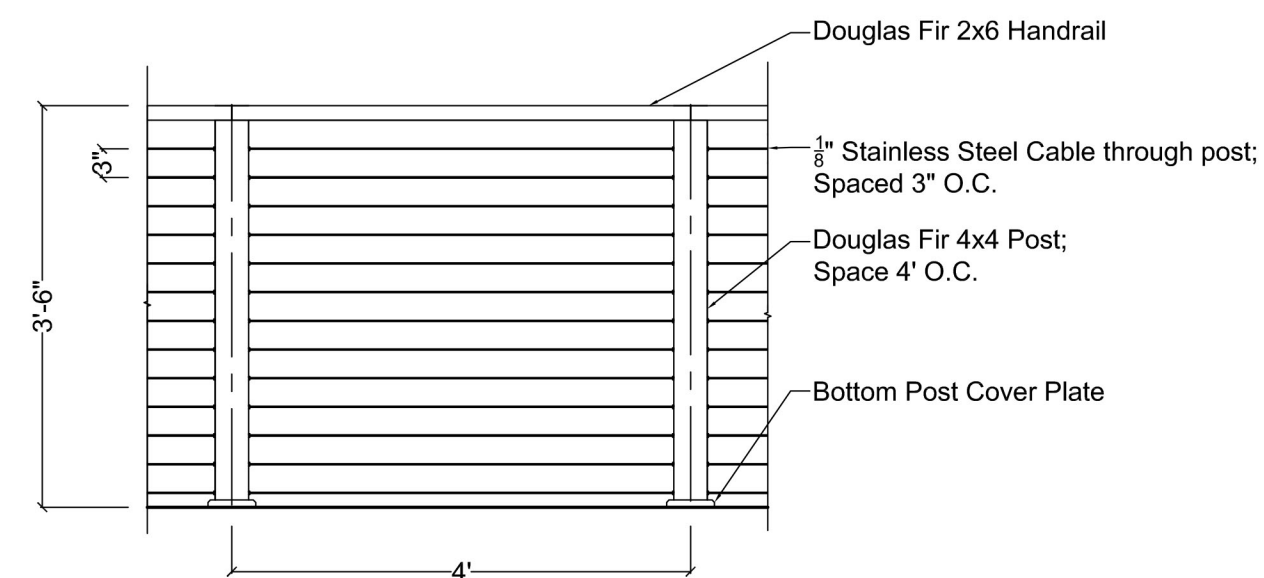
## NOTES

**JOINT WIDTH:**  $\frac{3}{32}$ " (7 mm)  
**% OF SURFACE OPENING:** 4.5%\*\*  
**INFILTRATION RATE:** 570 in./hr (14 475 mm/hr)

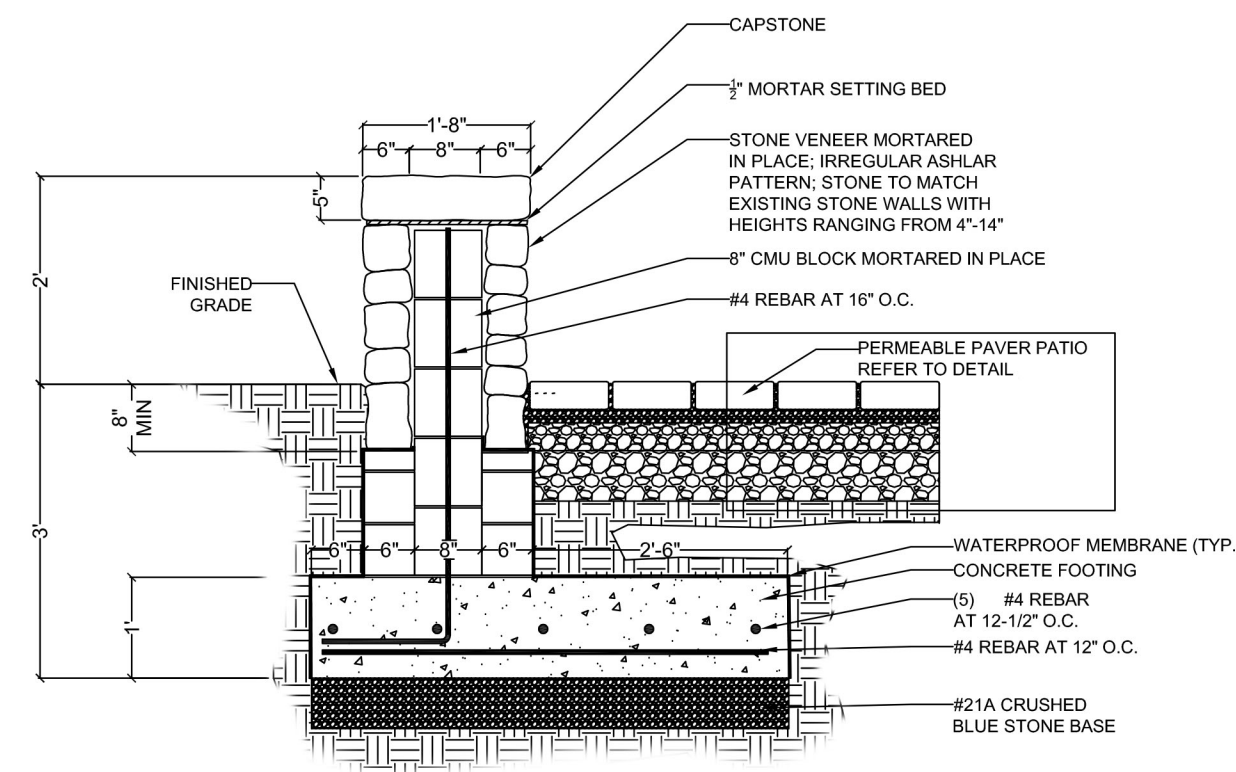
\*\*For permeable application, the installation should be combined with Blu 6 x 13 in a modular pattern. A min. of 4.5% opening surface requires 75% of Blu 6 x 13 and 25% of Blu.



**EcoCline** 4" Green Roof System NTS  
by FURBISH



CABLE RAILING DETAIL (TYP.) NTS



Stone Seating Wall Detail (TYP.) NTS



BRM830 series LED bollard

Dome or bevel top louver

LED Wattage and Lumen Values

Ordering Code	LED Qty	LED Current (mA)	Color Temp.	Average System Watts	Lumen Output	BUG Rating	Efficacy (LPW)
BRM83X-54L-116-NW-G2 (Asymmetric)	54	116	4000	41.4	1053	B0-U3-G1	25
BRM83X-108L-58-NW-G2 (Symmetric)	108	58	4000	38.6	1226	B1-U3-G1	32

Values from photometric tests performed in accordance with IESNA LM-79 and are representative of the configurations shown. Actual performance may vary due to installation and environmental variables. LED and driver tolerances, and field measurement considerations. It is highly recommended to confirm performance with a photometric layout.

NOTE: Some data may be scaled based on tests of similar (but not identical) luminaires. Contact factory for configurations not shown.

Predicted Lumen Depreciation Data

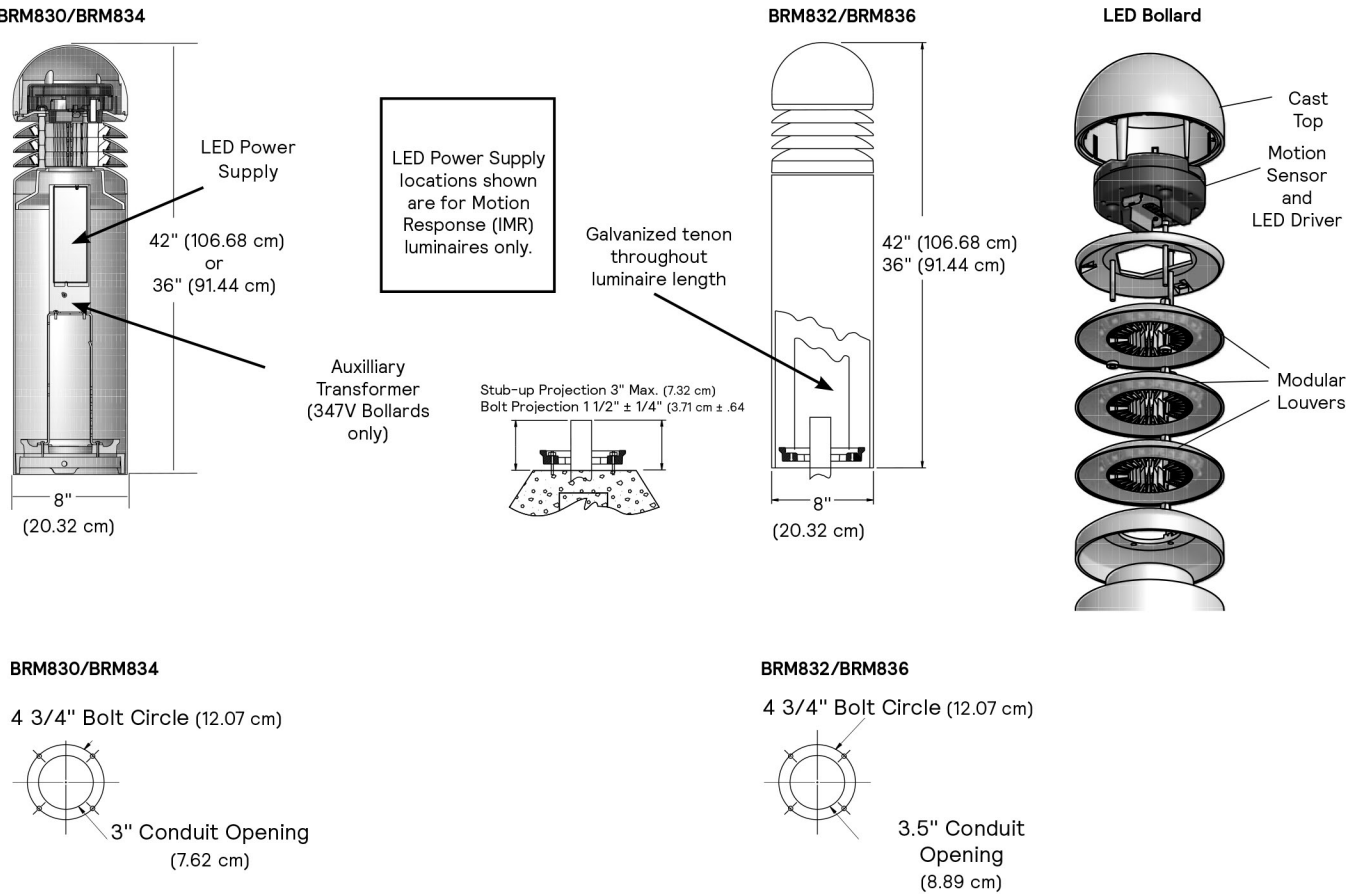
Predicted performance derived from LED manufacturer's data and engineering design estimates, based on IESNA LM-80 methodology. Actual experience may vary due to field application conditions. L70 is the predicted time when LED performance depreciates to 70% of initial lumen output. Calculated per IESNA TM21-11. Published L70 hours limited to 6 times actual LED test hours

Ambient Temperature °C	System Current	LED Current	Calculated L70 Hours	L70 per TM-21	Lumen Maintenance % at 60,000 hrs
25°C	1050mA	116mA	>100,000 hours	>60,000 hours	88%

BRM830 series LED bollard

Dome or bevel top louver

Dimensions



NOTE: Factory supplied template must be used when setting anchor bolts. Gardco will not honor any claim for incorrect anchorage placement from failure to use factory supplied templates.



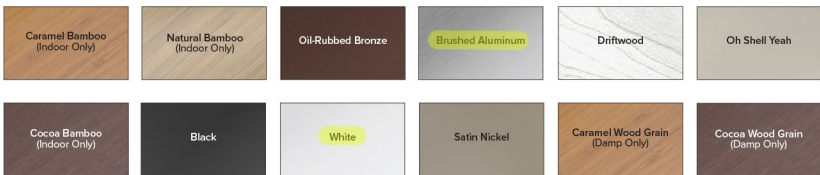
LIGHT BOLLARD TO MATCH EXISTING BOLLARDS

TECHNICAL SPECIFICATIONS

HAIKU

THE WORLD'S SMARTEST FAN JUST GOT BRIGHTER.

Airfoil Finishes



Hardware Finishes

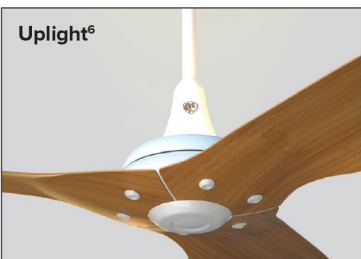


Construction Features						
Airfoils	Motor <sup>1</sup>	Controls <sup>2</sup>	Onboard Sensors <sup>3</sup>	Mounting	Environment <sup>4</sup>	Accessories
Bamboo (Indoor only) or aircraft-grade aluminum	High-efficiency, brushless DCEC motor Fan Eco Mode	Bluetooth remote Big Ass Fans mobile app Voice control 0-10 V (optional)	Temperature, humidity, and motion sensors enable SenseME Technology	Flat or sloped ceilings 8 ft (2.4 m) or taller Maximum slope: 33°	Indoor or covered damp locations	Haiku Light Kit Chromatic Uplight (Indoor only) 0-10 V Module Extended downrod lengths Stabilizer Kit

Ordering Information	Diameter	Environment and Mounting <sup>1,6</sup>	Airfoil Material	Hardware Finish	Airfoil Finish <sup>7</sup>	Motor	Downrod	Region	Downlight	Uplight <sup>8</sup>
52 inch: MK-H4-04 60 inch: MK-H4-05 84 inch: MK-H4-07	52 in (132 cm) 60 in (152 cm) 84 in (213 cm)	Indoor, Universal: 1806 Damp, Universal: 1906 Indoor, Low Profile: 2400 Damp, Low Profile: 2500 Indoor, Universal: 2406 Damp, Universal: 2506	Aluminum: Blank Bamboo: 01	Black: A258 White: A259 Satin Nickel: A470 Oil-Rubbed Bronze: A471 Good As Gold: A450	Black: F258 White: F259 Caramel Bamboo: F221 Cocoa Bamboo: F222 Natural Bamboo: F860 Caramel Wood Grain: F804 Cocoa Wood Grain: F854 Driftwood: F772 Satin Nickel: F470 Oil-Rubbed Bronze: F471 Brushed Aluminum: F531 On Shell Yeah: F277	US, CA, MX: G10 International: G11	20 inch: 120 32 inch: 132	US, CA, MX: B03 APAC: R03 GCC: R04	Downlight: 52	Uplight: 580



Shown with low profile mount



Compatible with universal mount only

Bluetooth Remote



Fixed Wall Mount

Magnetic Wall Holder

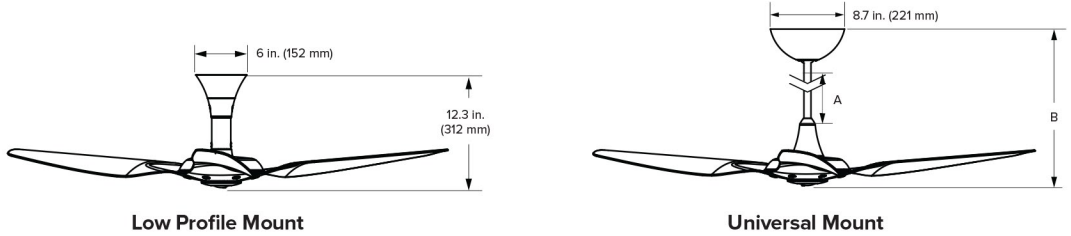
Handheld Remote

<sup>1</sup> Activate Fan Eco Mode in Big Ass Fans app to fully leverage the energy savings from your ceiling fan.  
<sup>2</sup> Voice control requires an Amazon Alexa-enabled device or the Google Assistant.  
<sup>3</sup> SenseME Technology and the Haiku mobile app are supported by Android™ and iOS®.  
<sup>4</sup> Damp-rated fans required in covered outdoor locations must have been engineered for overhead coverage extending at least two feet (61 cm) out from the airfoil tips on all sides. The included fan stabilizer must be installed. Not suitable for sloped ceilings. Not suitable for use in areas with high humidity or salt air. Not suitable for use in areas with high humidity or salt air.  
<sup>5</sup> 120 and 60 inch indoor fans with the both the uplight and downlight must use the universal mount, indoor only (2806). Low profile mount not available for 84-inch fans.  
<sup>6</sup> Uplight not available on damp-rated fans. Compatible with universal mount only. Uplight kits purchased separately.  
<sup>7</sup> Bamboo finishes are indoor use only.  
<sup>8</sup> Warranty period and terms vary by country and application. Lead times may vary.

TECHNICAL SPECIFICATIONS

HAIKU

THE WORLD'S SMARTEST FAN JUST GOT BRIGHTER.



Universal Mount Downrod Lengths	Included Downrod (Select at Time of Order)	Optional Downrods (Ordered Separately)
Downrod (A) <sup>1</sup>	12 in. (305 mm) 21 in. (533 mm) 29 in. (737 mm)	48 in. (1219 mm) 60 in. (1524 mm) 72 in. (1829 mm)
Fan Height (B) <sup>2</sup>	21 in. (533 mm) 29 in. (737 mm)	41 in. (1041 mm) 57 in. (1448 mm) 69 in. (1753 mm)
Ceiling Height	9-10.5 ft (2.7-3.2 m) 10.5-11 ft (3.2-3.4 m)	11-13 ft (3.4-4 m) 13-14 ft (4-4.3 m) 14-15 ft (4.3-4.6 m)

Fan Specifications — Aluminum Airfoils									
Diameter	Mount	Weight <sup>3</sup>	Max Speed	Airflow Min/Max	Watts Min/Max	Operating Voltage	Ambient Operational Temperature	Sound Level <sup>4</sup>	
52 in. (132 cm)	Low Profile	16.5 lb (7.5 kg)	177 RPM	427 / 5,172 cfm	2.4 / 15.1 W	100–240 VAC, 1 Ø, 50–60 Hz	32° to 104° F (0° to 40° C)	<35 dba at max speed	
	Universal	15.5 lb (7 kg)	199 RPM	342 / 6,456 cfm	2.5 / 20.1 W				
60 in. (152 cm)	Low Profile	18.5 lb (8.4 kg)	174 RPM	403 / 6,062 cfm	2.4 / 15.9 W				
	Universal	17.5 lb (8 kg)	199 RPM	509 / 7,291 cfm	2.5 / 22.4 W				
84 in. (213 cm)	Universal	26 lb (11.8 kg)	128 RPM	2,768 / 17,369 cfm	3.8 / 42.3 W				

Fan Specifications – Bamboo Airfoils <sup>5</sup>									
Diameter	Mount	Weight <sup>3</sup>	Max Speed	Airflow Min/Max	Watts Min/Max	Operating Voltage	Ambient Operational Temperature	Sound Level <sup>4</sup>	
52 in. (132 cm)	Low Profile	14 lb (6.4 kg)	177 RPM	331 / 5,731 cfm	2.4 / 19.5 W	100–240 VAC, 1 Ø, 50–60 Hz	32° to 104° F (0° to 40° C)	<35 dba at max speed	
	Universal	15 lb (5.9 kg)	200 RPM	371 / 6,973 cfm	3.5 / 28.92 W				
60 in. (152 cm)	Low Profile	16 lb (7.3 kg)	175 RPM	479 / 6,399 cfm	2.3 / 16.2 W				
	Universal	15 lb (6.8 kg)	199 RPM	596 / 7,632 cfm	2.6 / 21.5 W				
84 in. (213 cm)	Universal	21 lb (9.5 kg)	128 RPM	2,260 / 15,081 cfm	3.6 / 32.9 W				



Automate your comfort with SenseME  
SenseME automatically adjusts your fans and lights to keep your home feeling and looking exactly the way you want it to. Download the Big Ass Fans mobile app to group multiple fans and set your comfort preferences for hands-free control.

<sup>1</sup> Optional downrod lengths packaged separately. The 7 in. (178 mm) downrod is not available for 84-inch (2134 mm) fans. 60 in. (1524 mm) is the longest downrod available.  
<sup>2</sup> The fan height is measured from the ceiling to the bottom of the fan blades.  
<sup>3</sup> The product fan weight will vary based on individual component weights and finishes.  
<sup>4</sup> Actual levels of sound measurements in the field may vary due to sound reflector surfaces and environmental conditions.  
<sup>5</sup> Bamboo airfoils must be installed in indoor, dry environments only.  
<sup>6</sup> Warranty period and terms vary by country and application. Lead times may vary.

AREA 8 POND PAVILION CONCEPT CUT SHEETS

OUTDOOR FAN WITH DOWNLIGHT FOR INTERIOR LIGHTING

