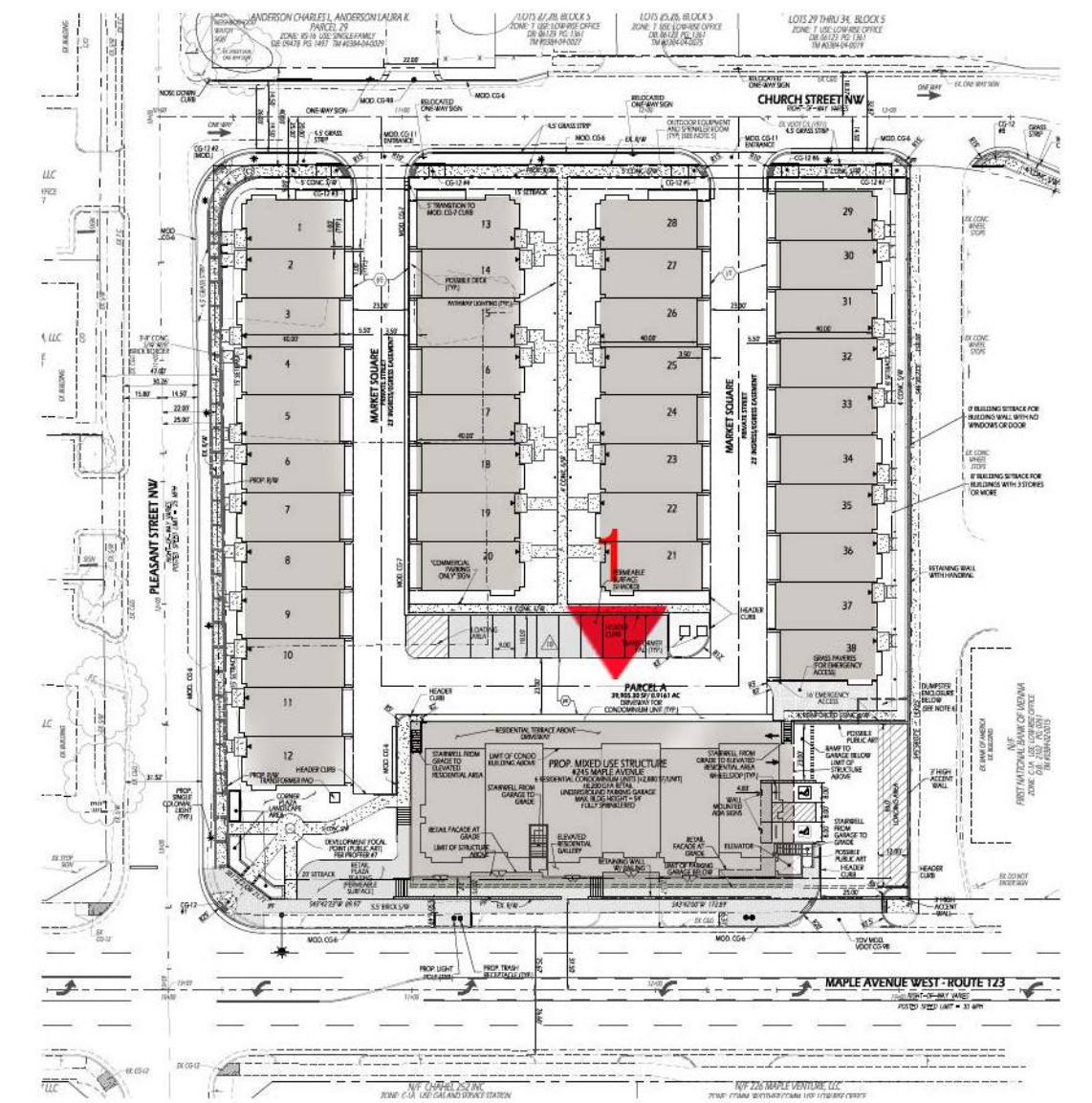


KEY PLAN



NOTE: LOCATION OF FUTURE ART WORK

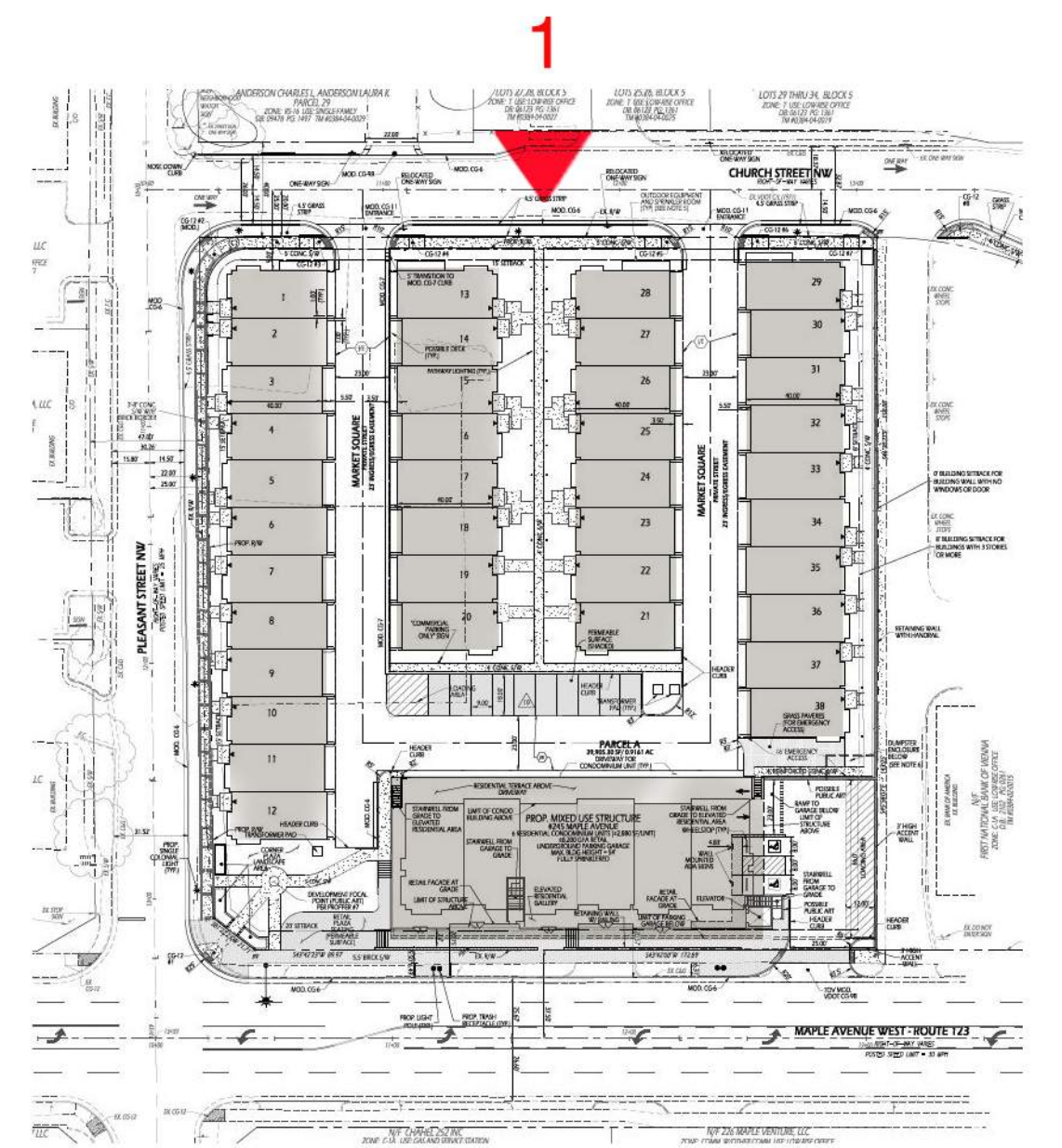
1. MAPLE AVENUE - PROPOSED



KEY PLAN



1. REAR MAPLE AVENUE - PROPOSED



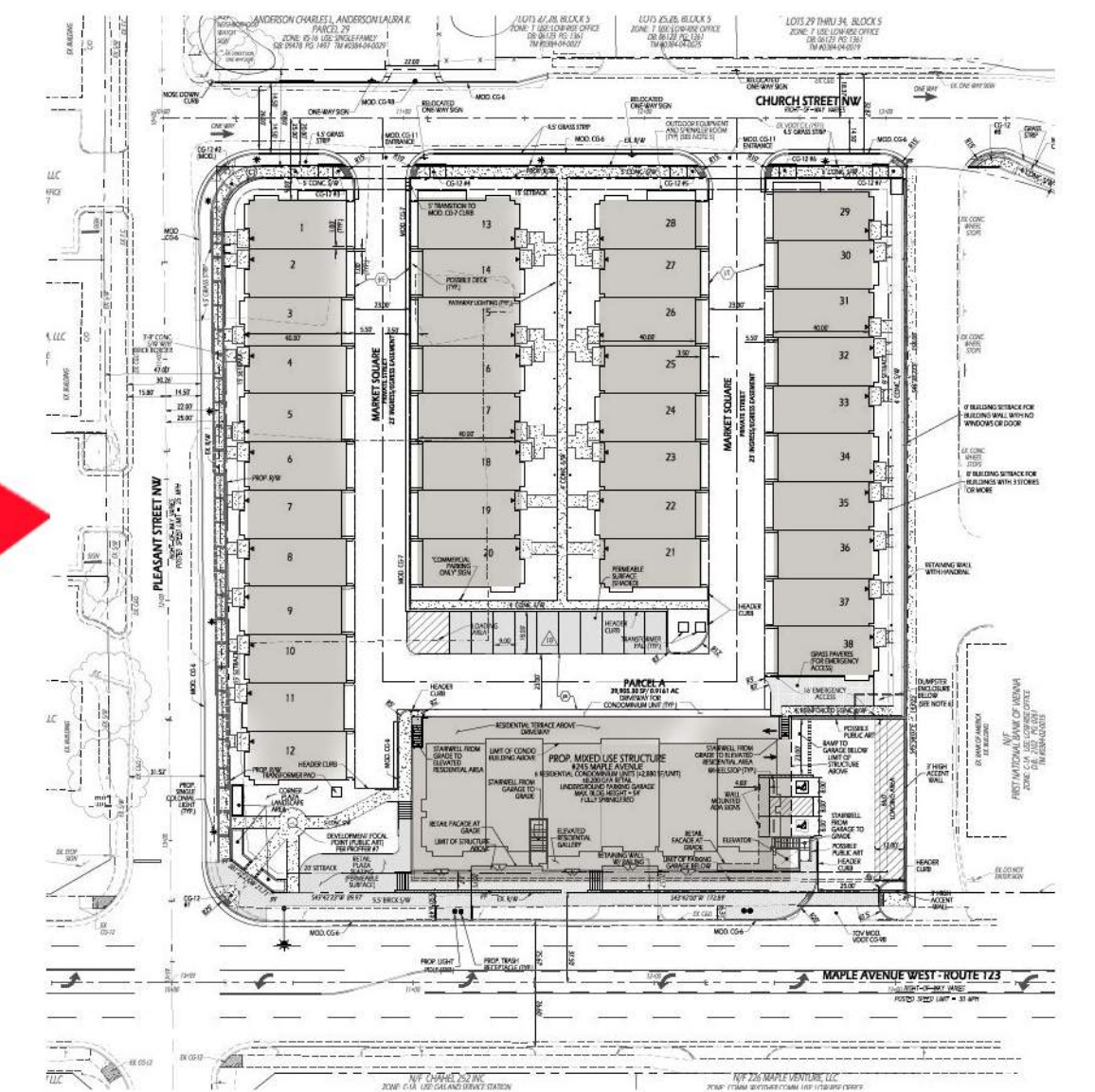
KEY PLAN



1. 6 PANEL DOOR



1. CHURCH STREET - PROPOSED

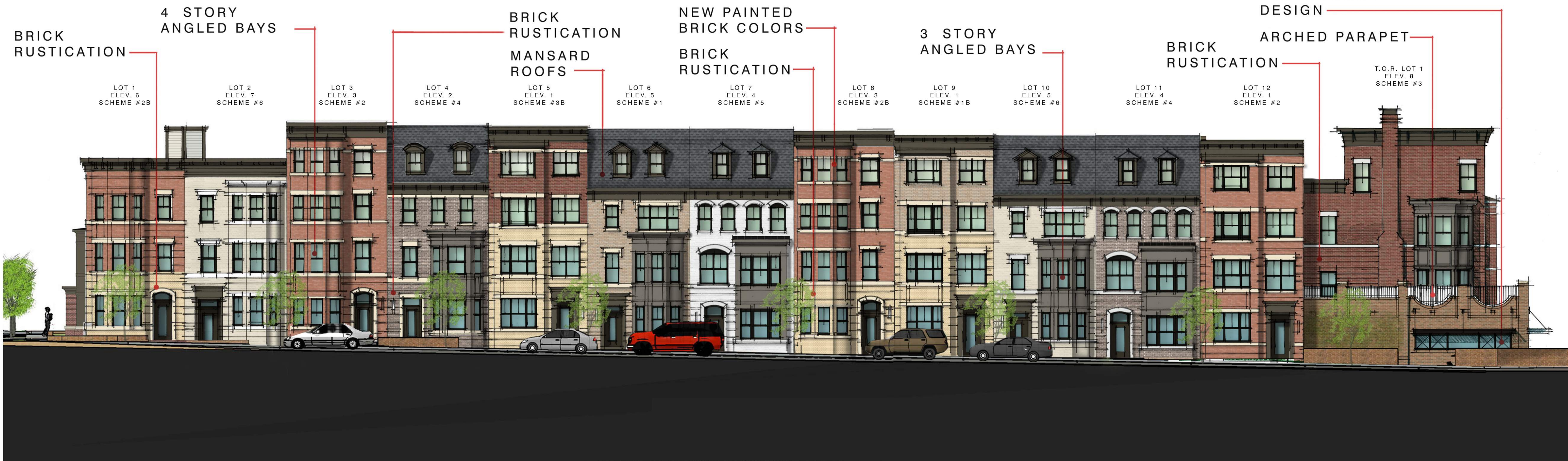


KEY PLAN

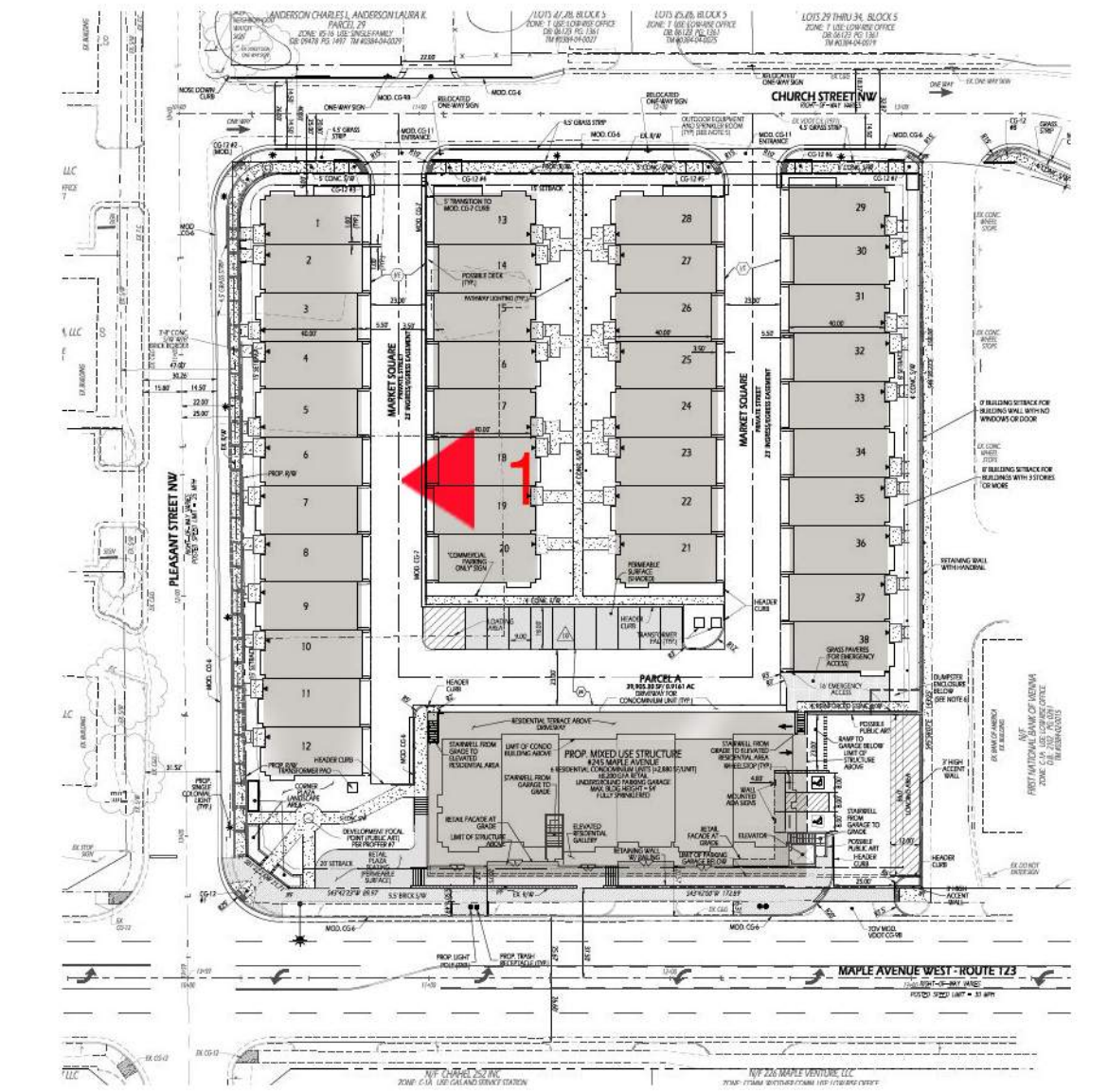
STORE FRONT DESIGN

ARCHED PARAPET

T.O.R. LOT 1
ELEV. 8
SCHEME #3



1. PLEASANT STREET - PROPOSED

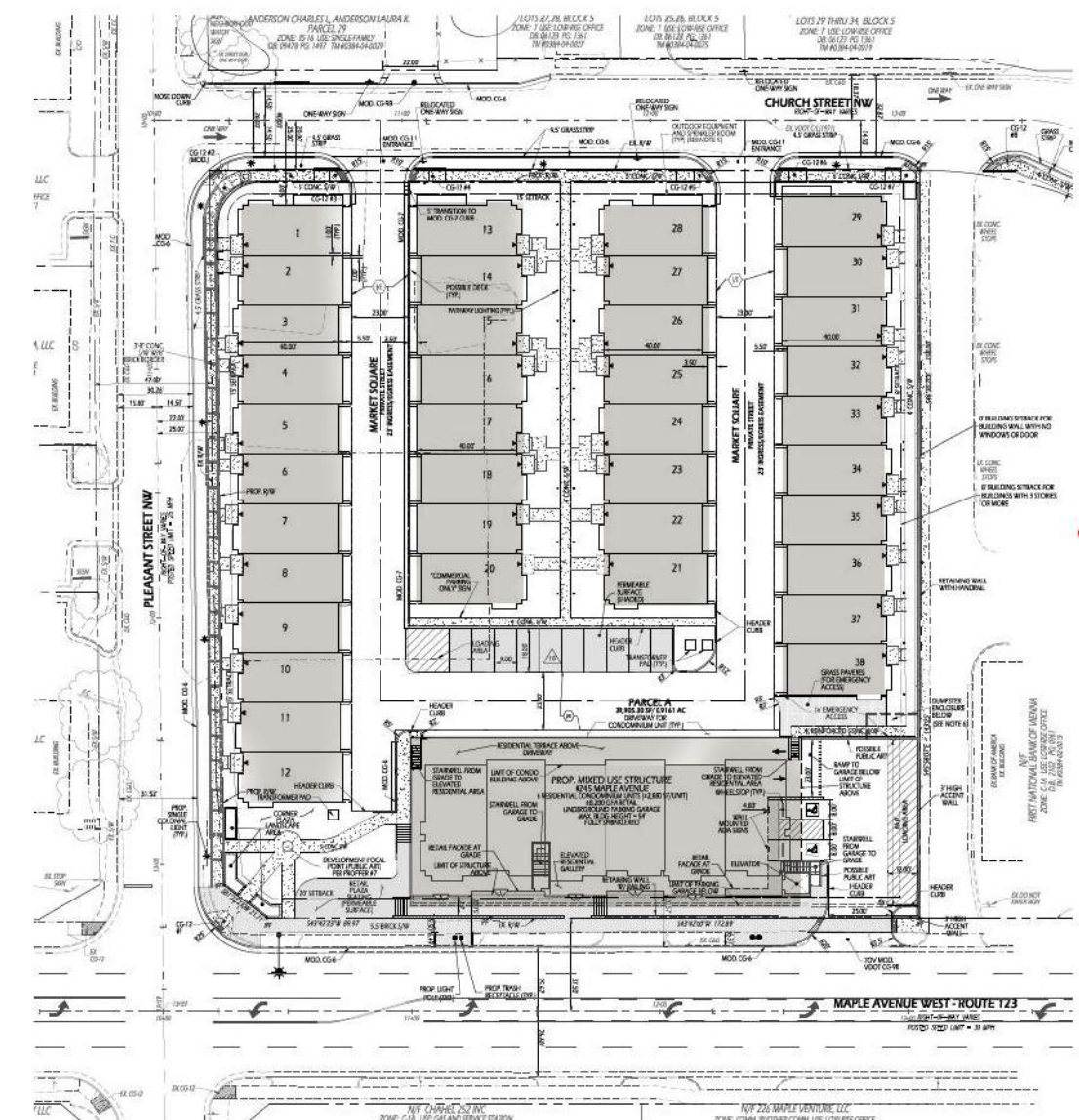


KEY PLAN

LOT 12 ELEV. 1 SCHEME #2 LOT 11 ELEV. 4 SCHEME #4 LOT 10 ELEV. 5 SCHEME #6 LOT 9 ELEV. 1 SCHEME #1B LOT 8 ELEV. 3 SCHEME #2B LOT 7 ELEV. 4 SCHEME #5 LOT 6 ELEV. 5 SCHEME #1 LOT 5 ELEV. 1 SCHEME #3B LOT 4 ELEV. 2 SCHEME #4 LOT 3 ELEV. 3 SCHEME #2 LOT 2 ELEV. 7 SCHEME #6 LOT 1 ELEV. 6 SCHEME #2B



1. PLEASANT STREET - PROPOSED

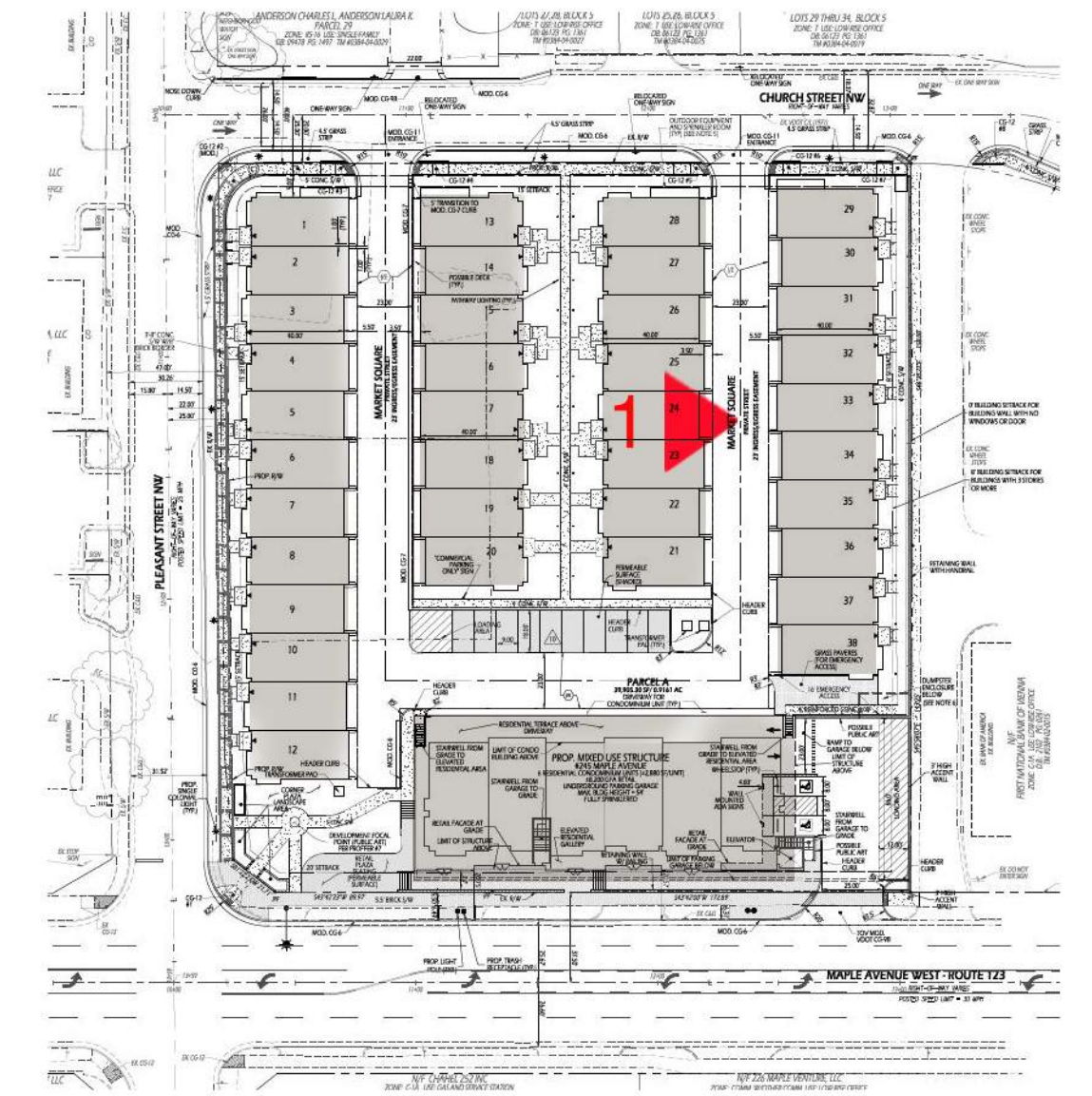


KEY PLAN



NOTE: LOCATION OF FUTURE ART WORK

1. BANK OF AMERICA VIEW - PROPOSED

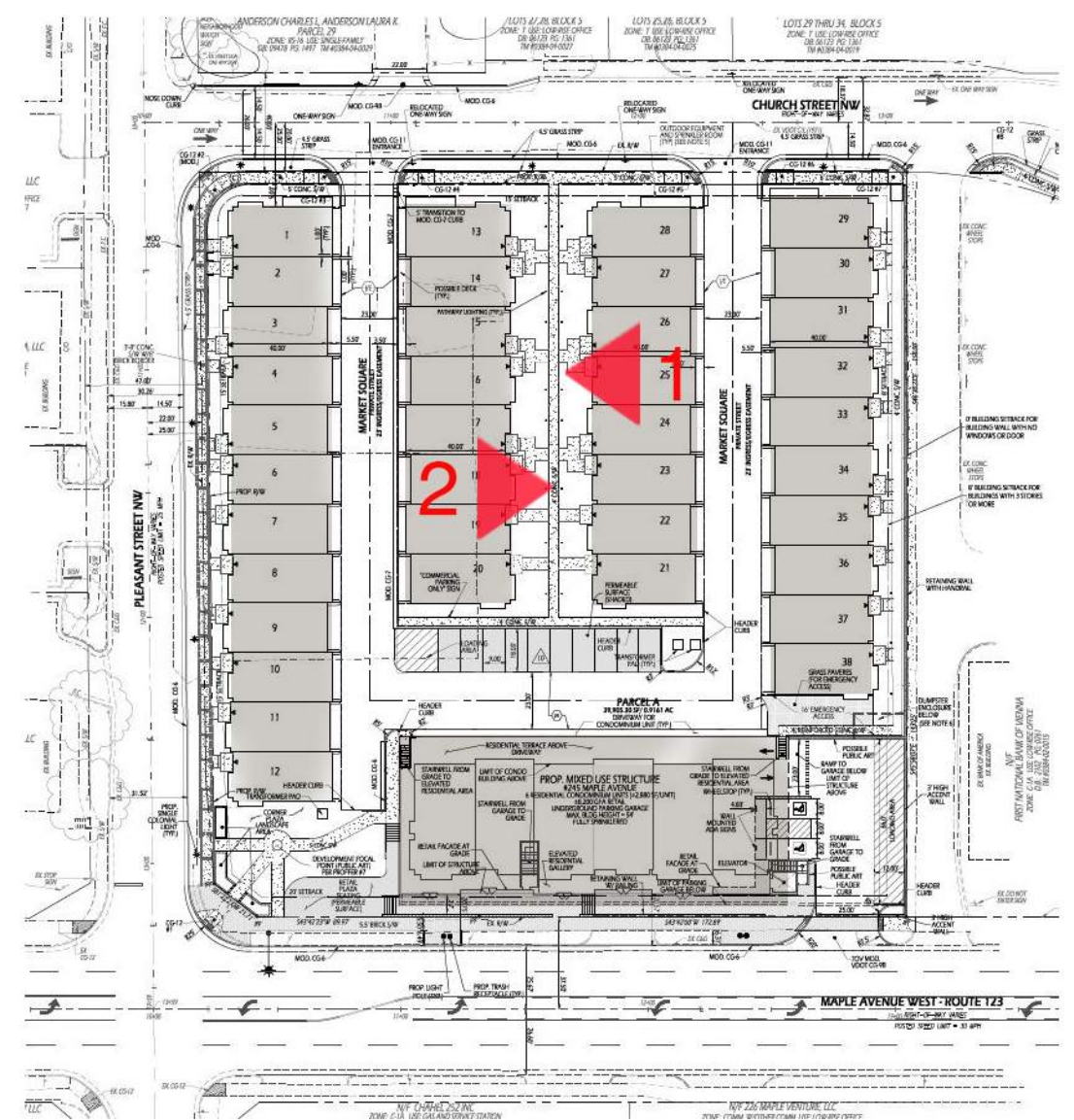


KEY PLAN



1. REAR BANK OF AMERICA STREET VIEW

LOT 28 ELEV. 3 SCHEME #3B LOT 27 ELEV. 2 SCHEME #4 LOT 26 ELEV. 1 SCHEME #5 LOT 25 ELEV. 1 SCHEME #2 LOT 24 ELEV. 3 SCHEME #3B LOT 23 ELEV. 4 SCHEME #1 LOT 22 ELEV. 5 SCHEME #6 LOT 21 ELEV. 1 SCHEME #2B



KEY PLAN

2. INTERIOR STRIP ELEVATION 2

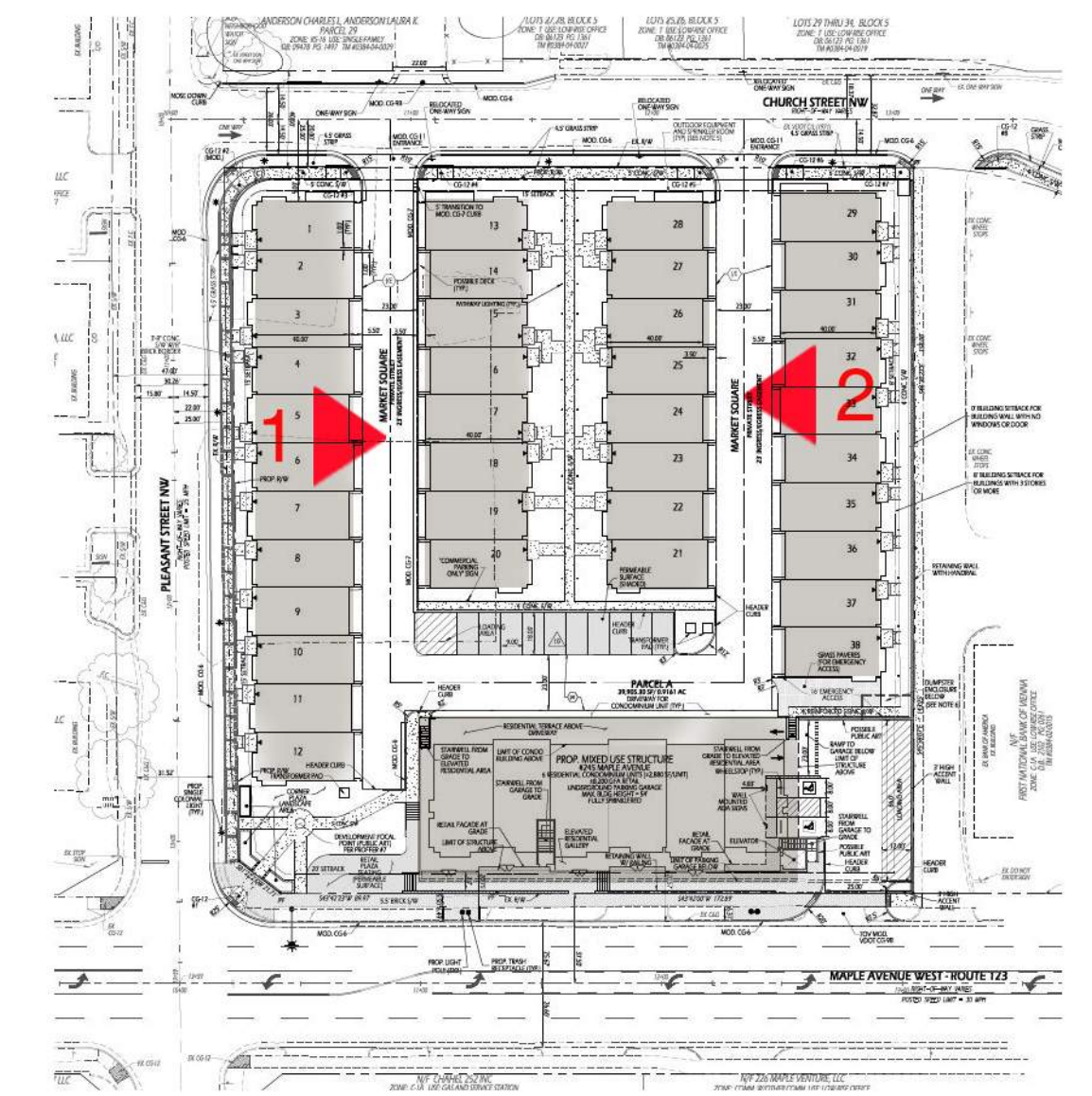
LOT 20 ELEV. 3 SCHEME #3B LOT 19 ELEV. 1 SCHEME #2 LOT 18 ELEV. 5 SCHEME #1 LOT 17 ELEV. 4 SCHEME #5 LOT 16 ELEV. 1 SCHEME #3B LOT 15 ELEV. 3 SCHEME #2 LOT 14 ELEV. 2 SCHEME #6 LOT 13 ELEV. 1 SCHEME #2B



1. INTERIOR STRIP ELEVATION 1



1. REAR INTERIOR STRIP 1



KEY PLAN



2. REAR INTERIOR STRIP 2



MAPLE AVE.

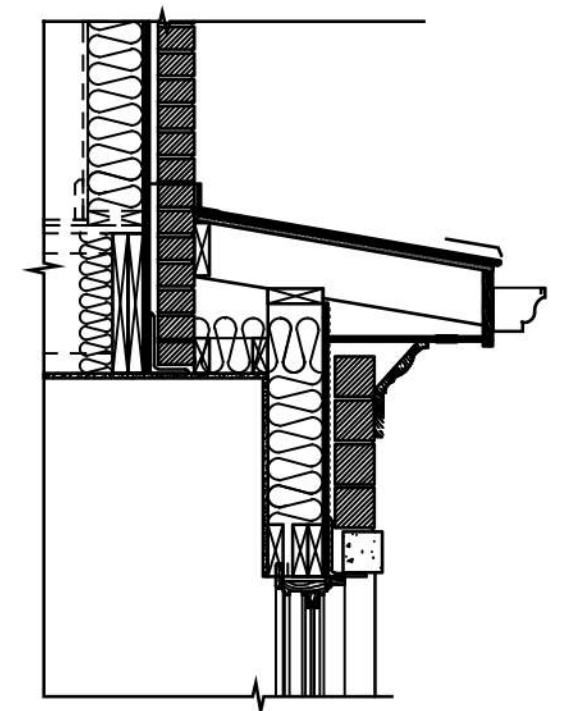


PLEASANT STREET

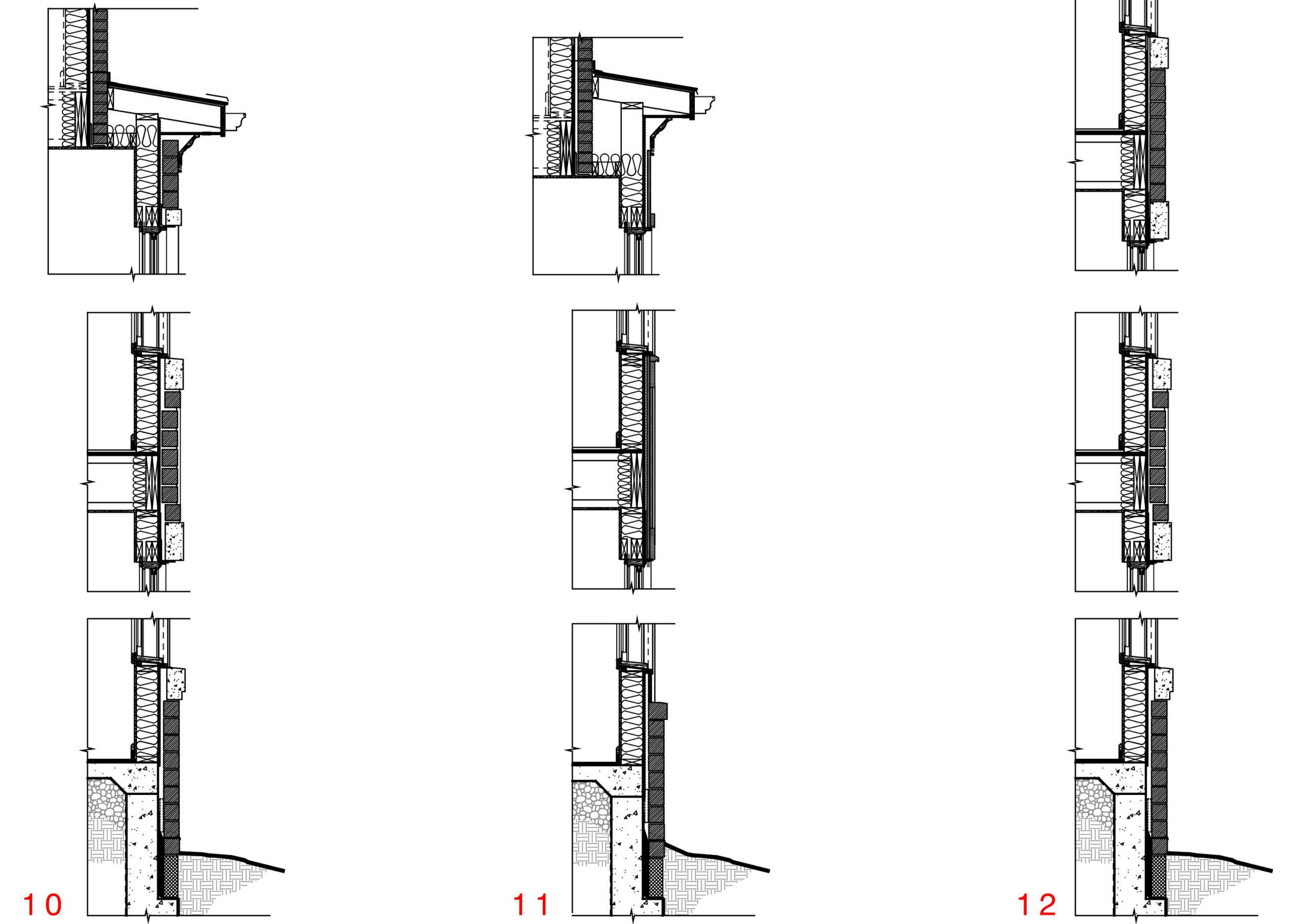
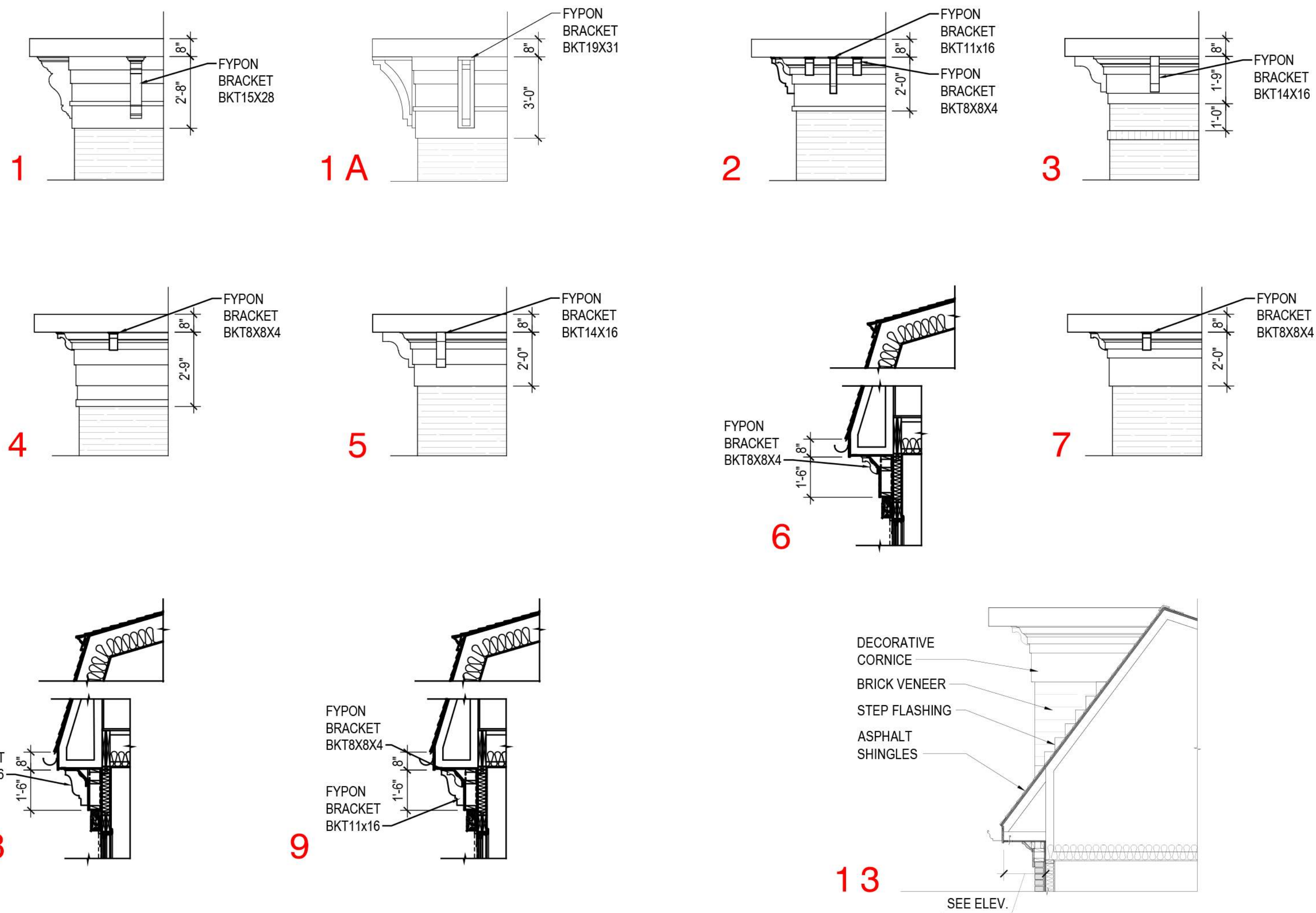


BANK OF AMERICA VIEW

PROPOSED BAY DETAILS



PROPOSED CORNICHE PROFILES





MAPLE AVE.



PLEASANT STREET

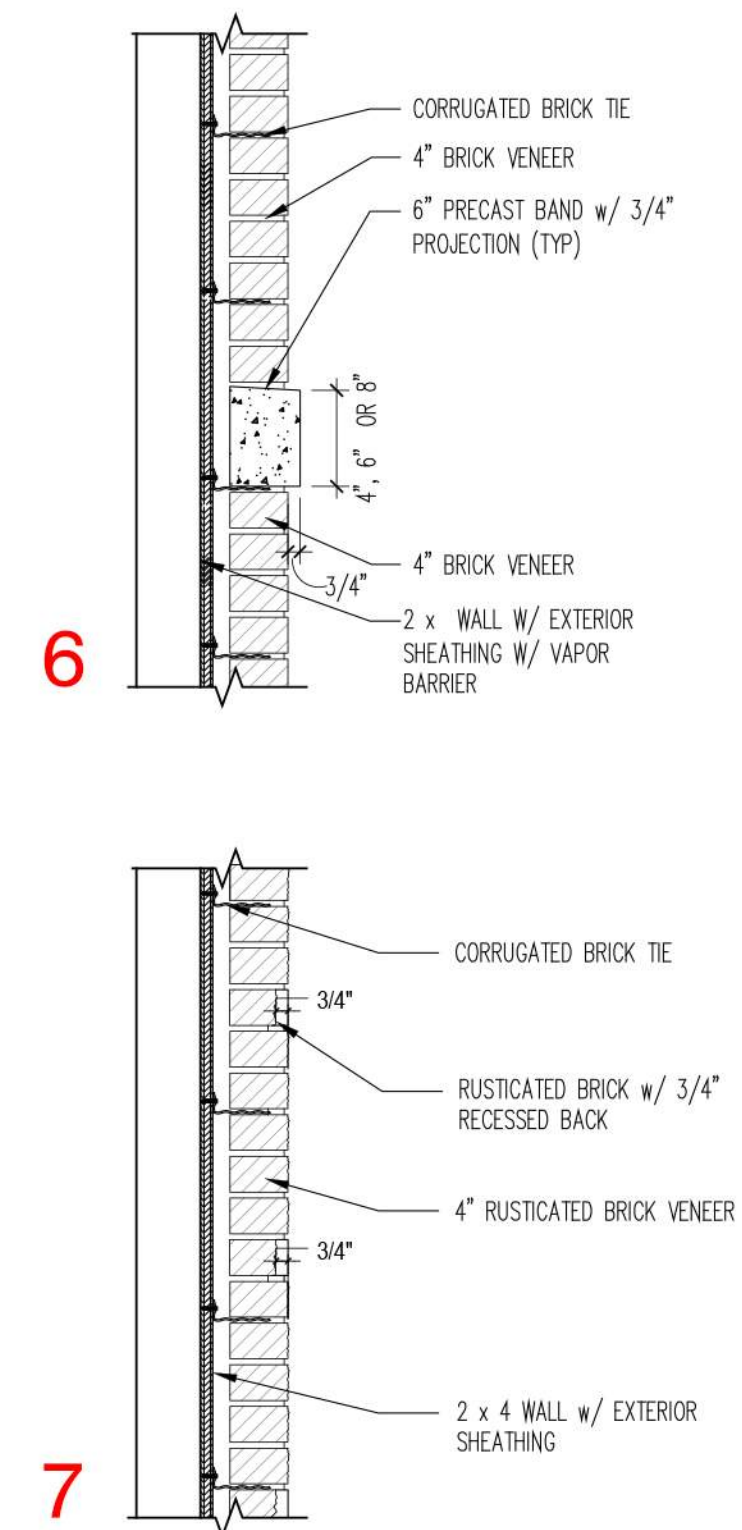
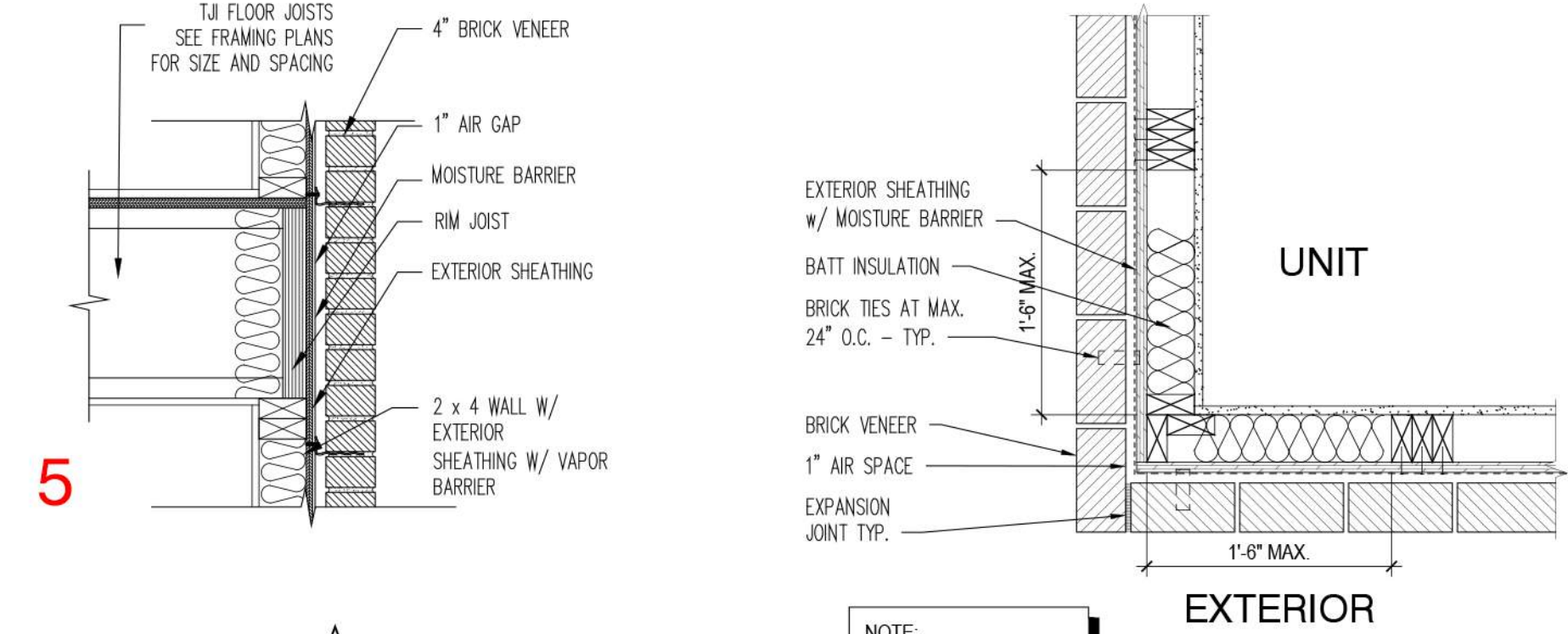
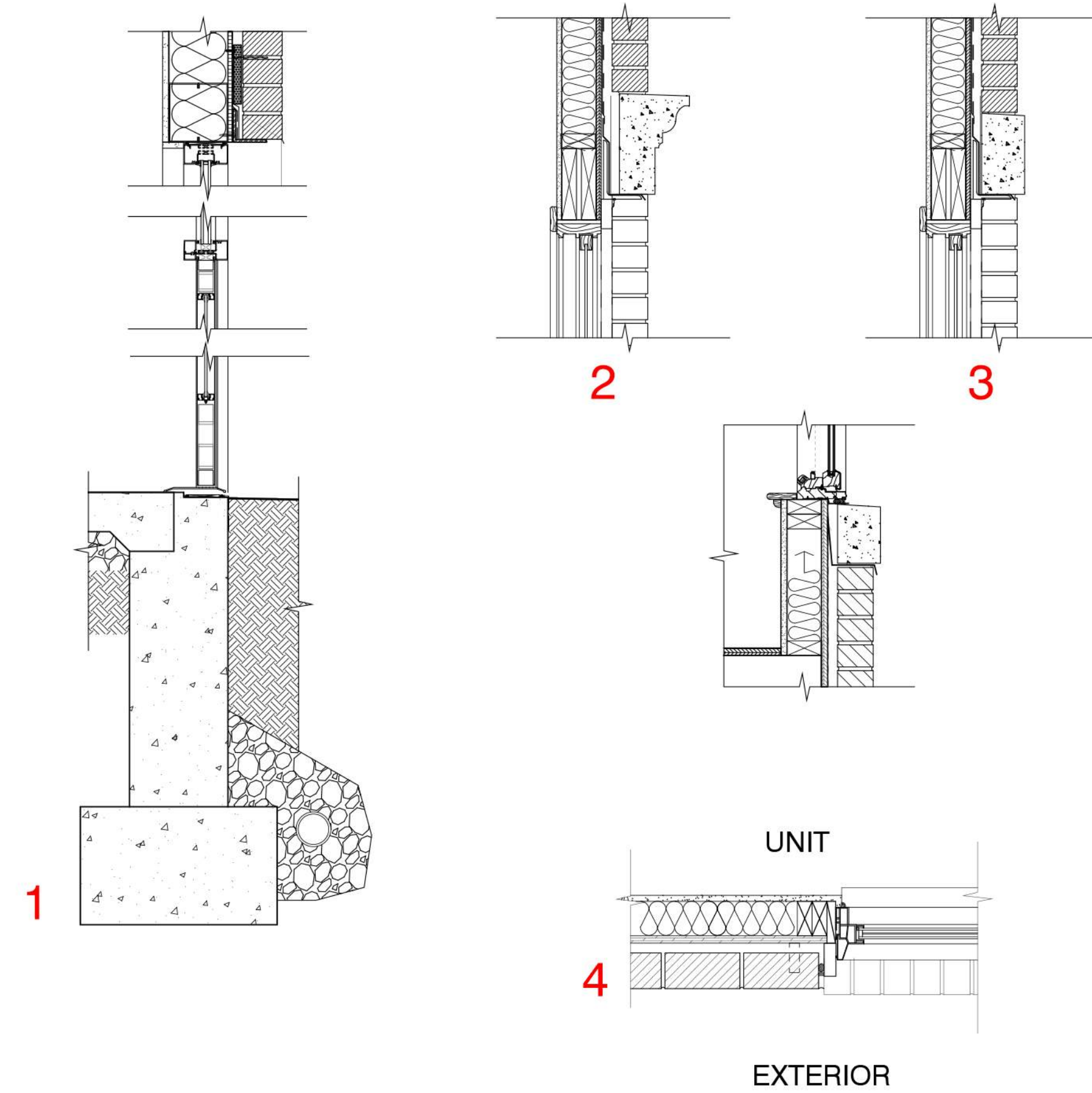


BANK OF AMERICA VIEW

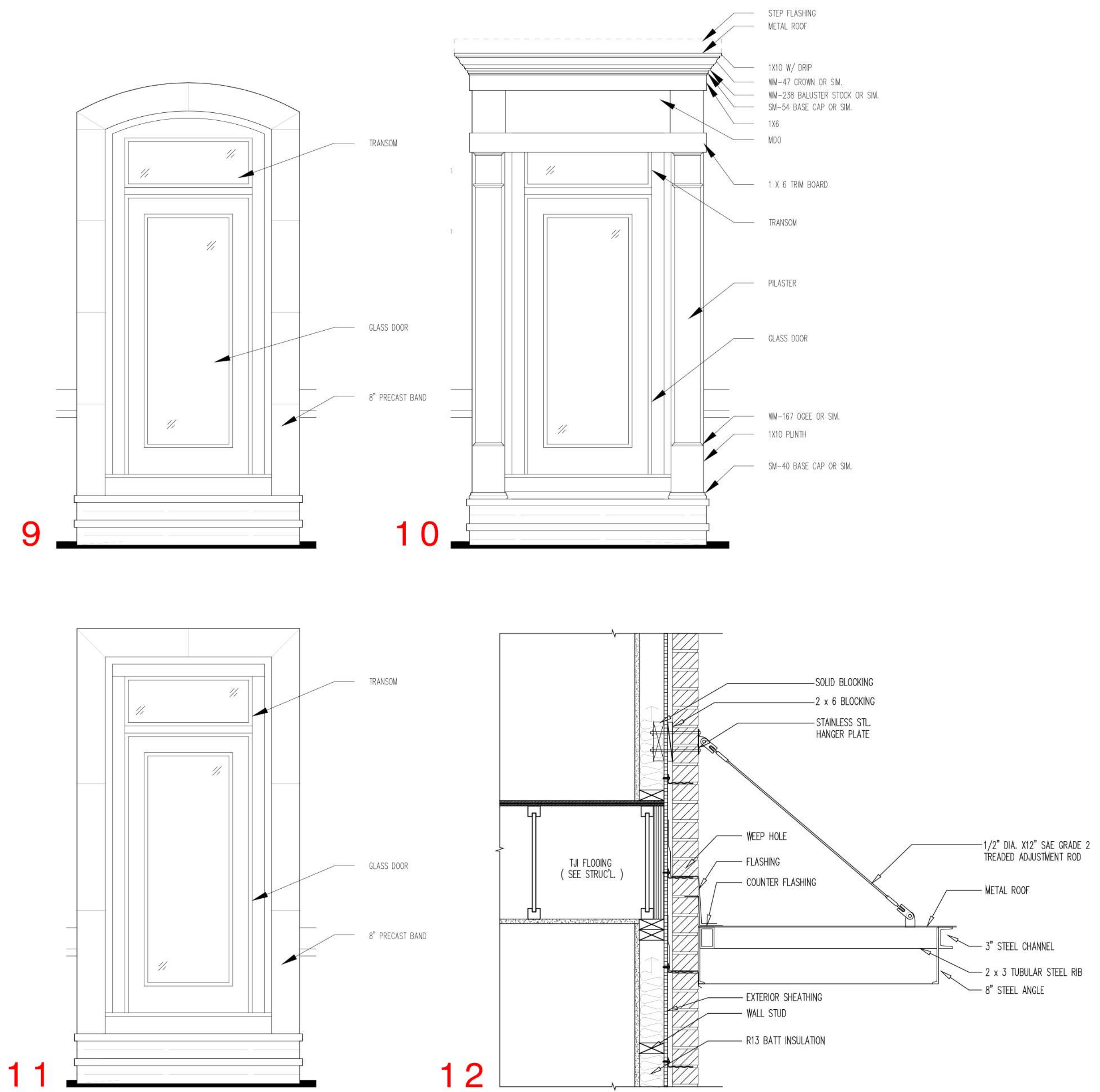
PROPOSED ENTRY DETAILS

PROPOSED WINDOW SECTIONS

PROPOSED WALL SECTION DETAILS



RUSTICATED BRICK EXAMPLE



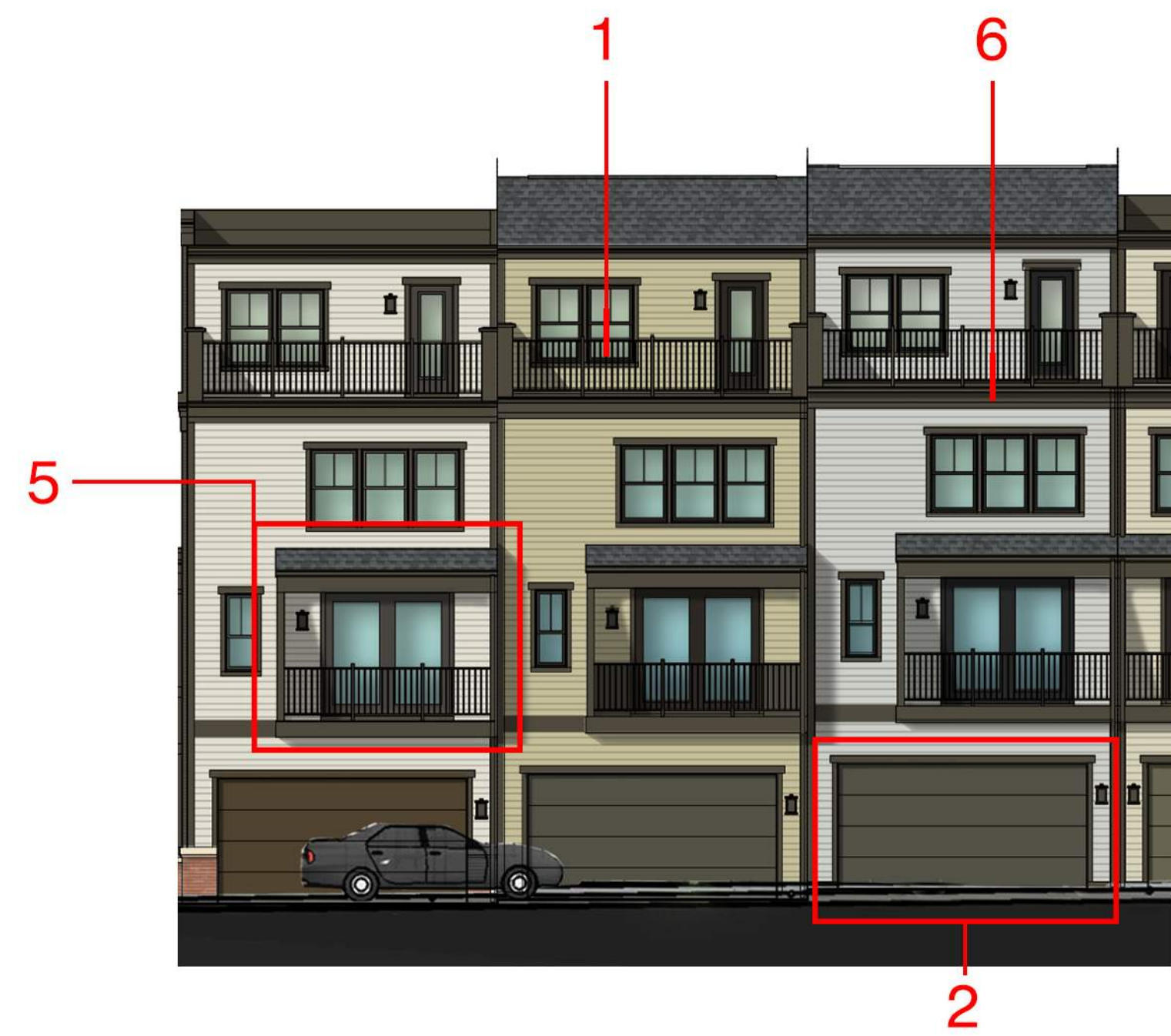
DETAILS

TOWNS OVER RETAIL

MARCO POLO DEVELOPMENT

08/05/19
NV.060

E7



BANK OF AMERICA VIEW



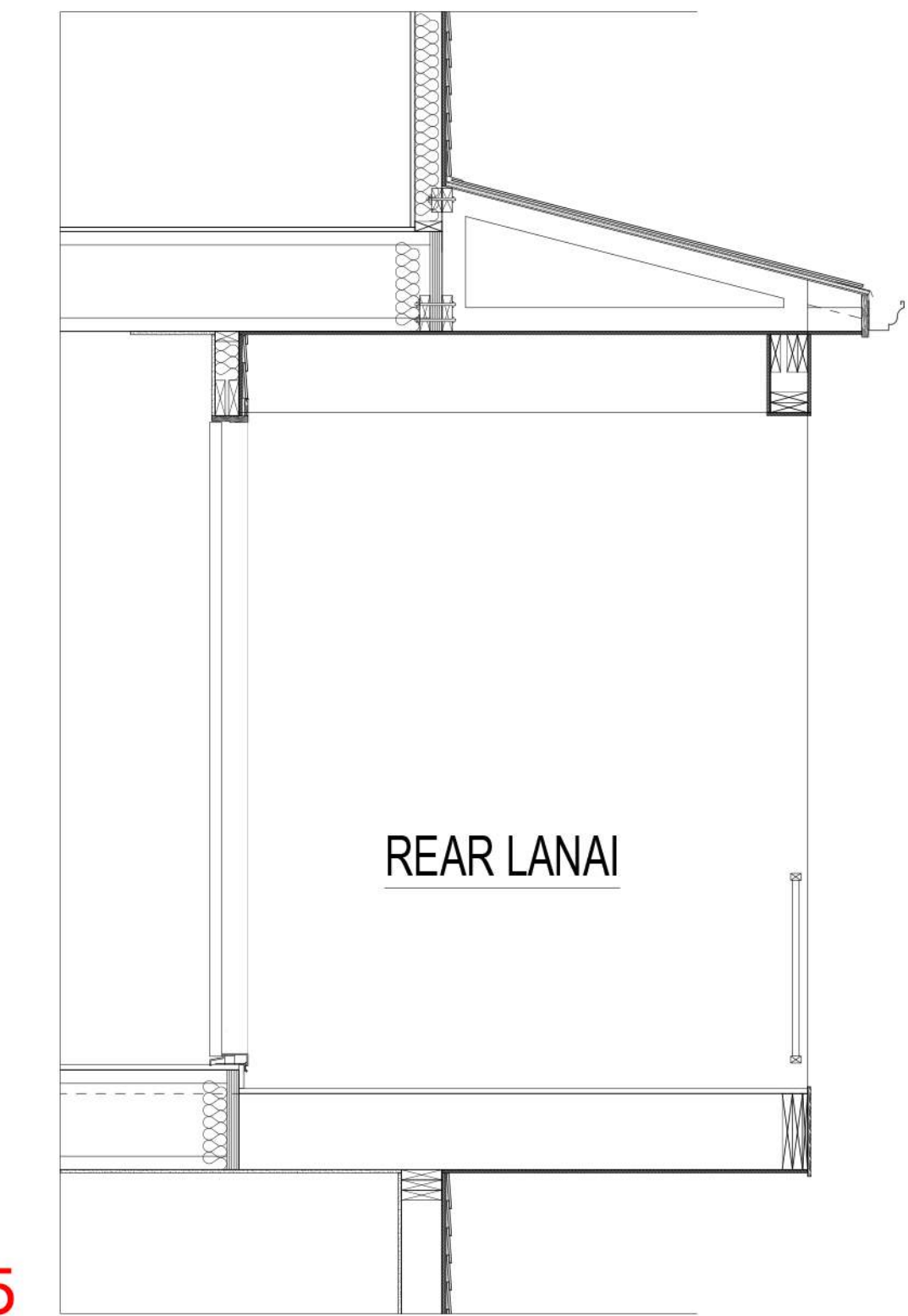
MAPLE AVE.



1. TREX SIGNATURE ALUMINUM RAILING - BLACK



3. POWDER COATED ALUMINUM RAILING - BLACK



5

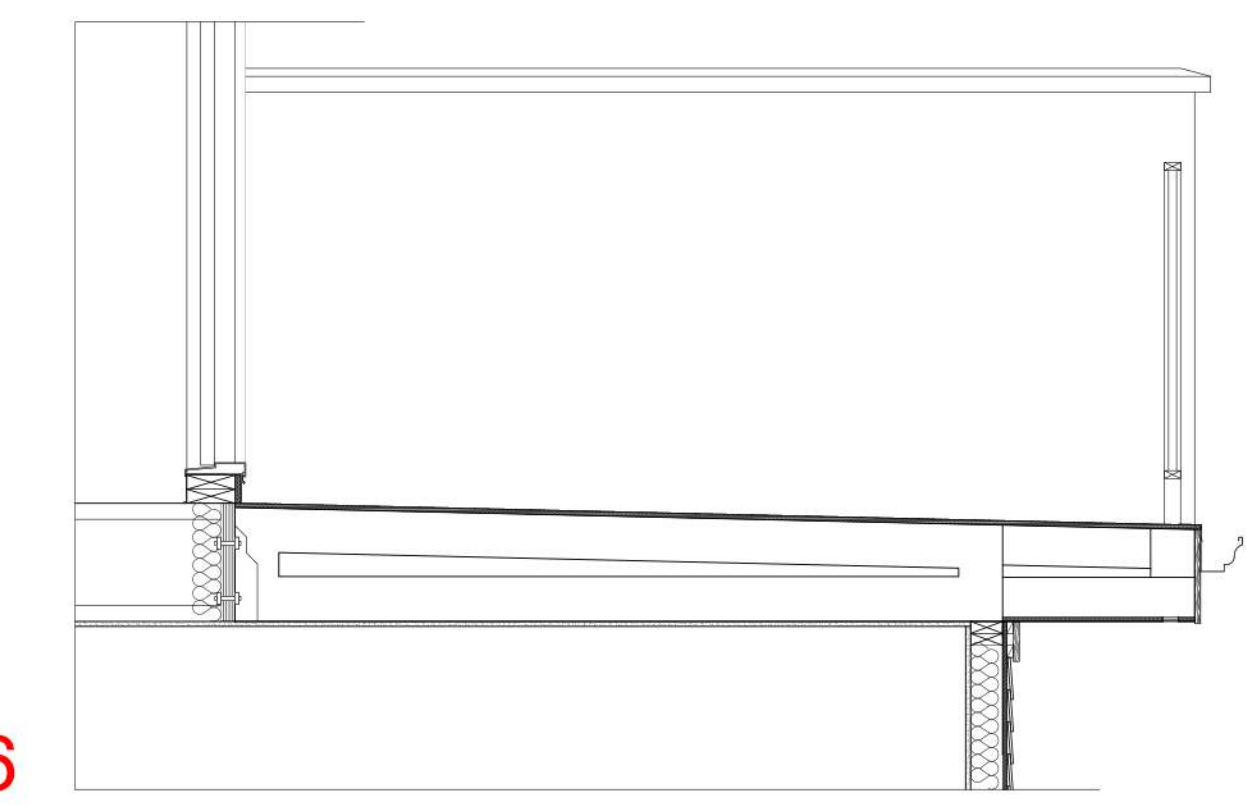
7. RETAINING WALL VERTICA - DAKOTA BLEND



2. AMARR LINCOLN FLUSH PANEL GARAGE DOOR



4. PLYGEM 2100 SERIES - BRONZE



6

8. PRECAST CAP WARM PRECAST COLOR



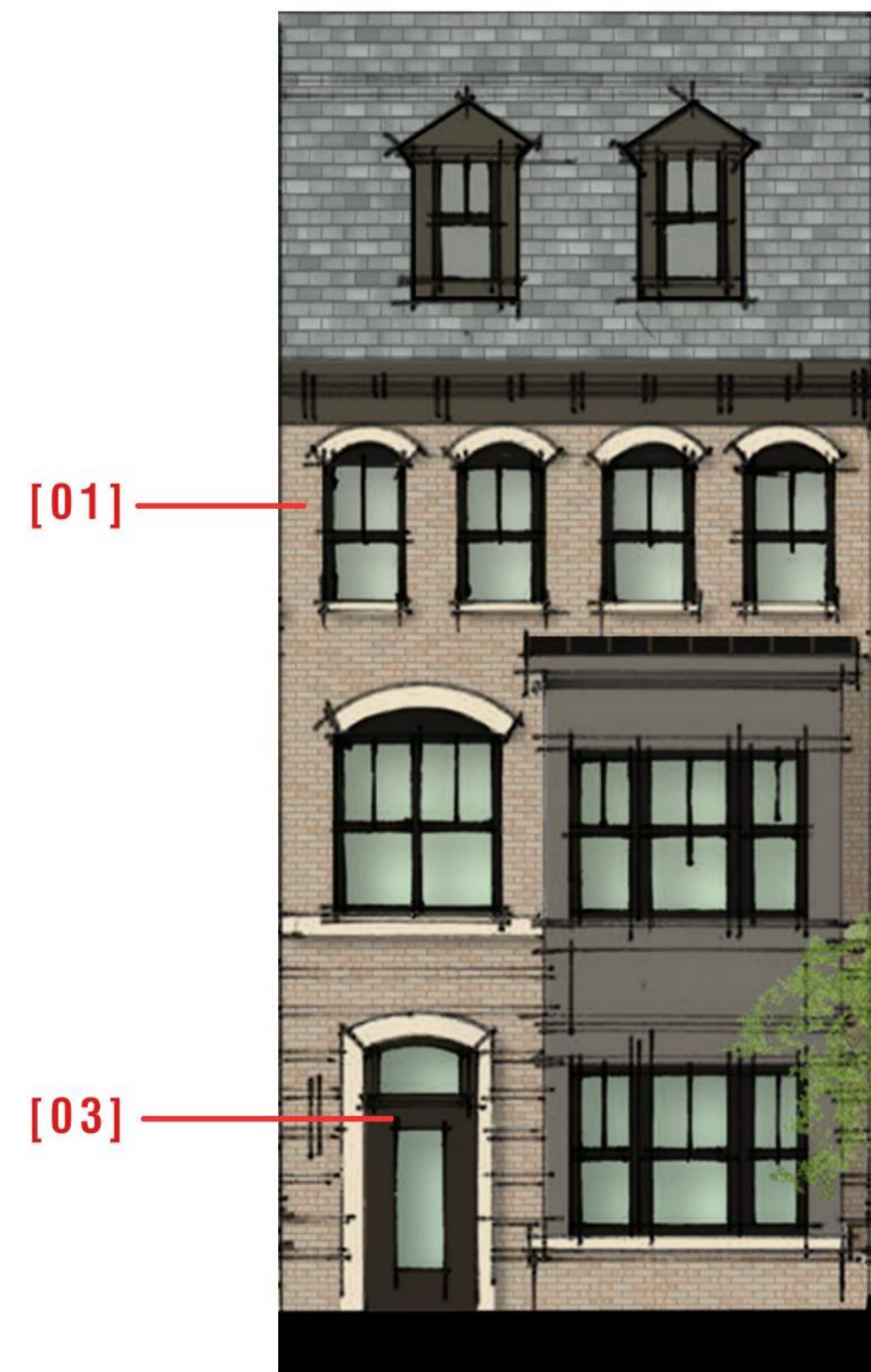








SCHEME #1



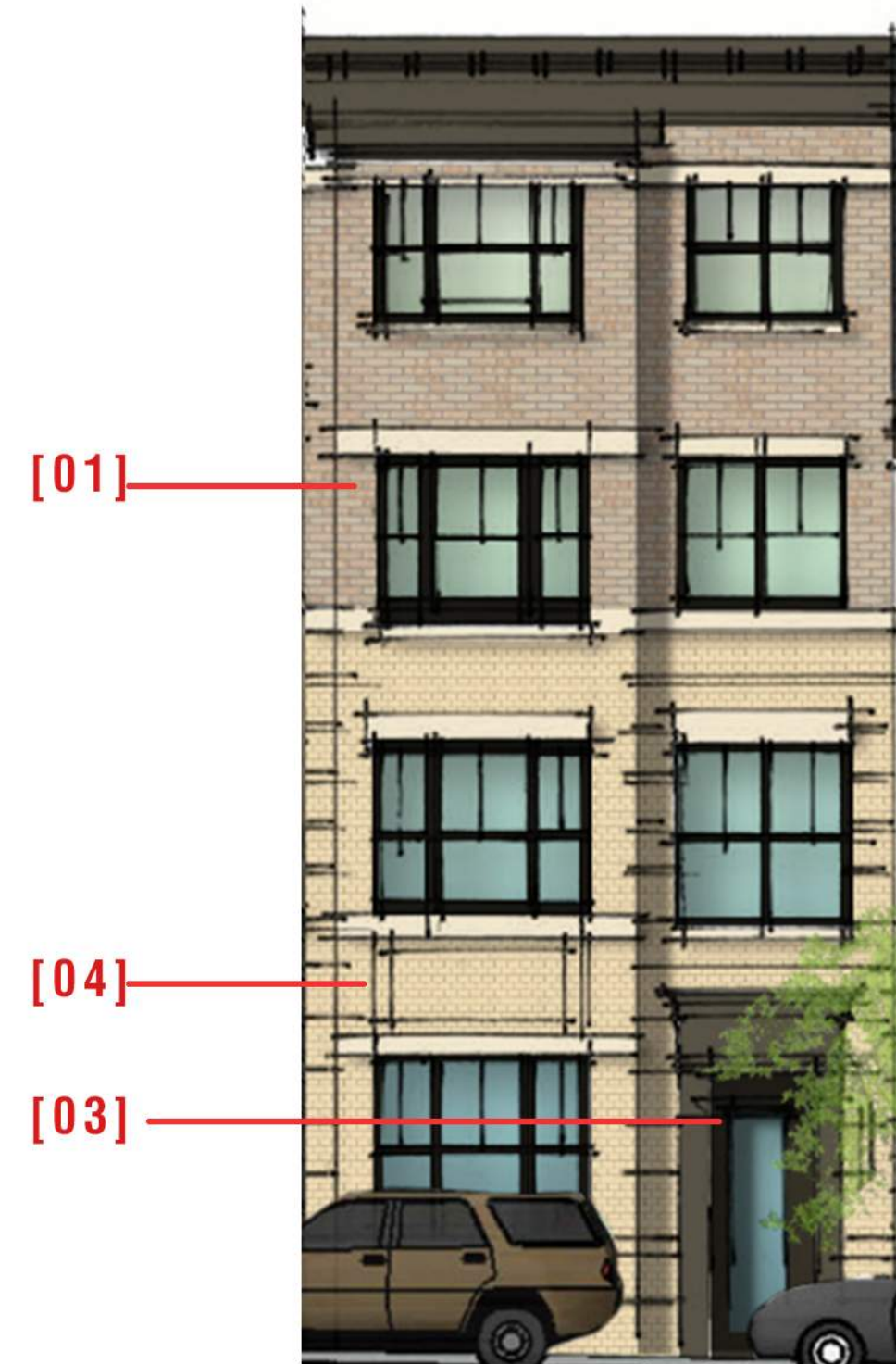
SCHEME #1



SCHEME #2

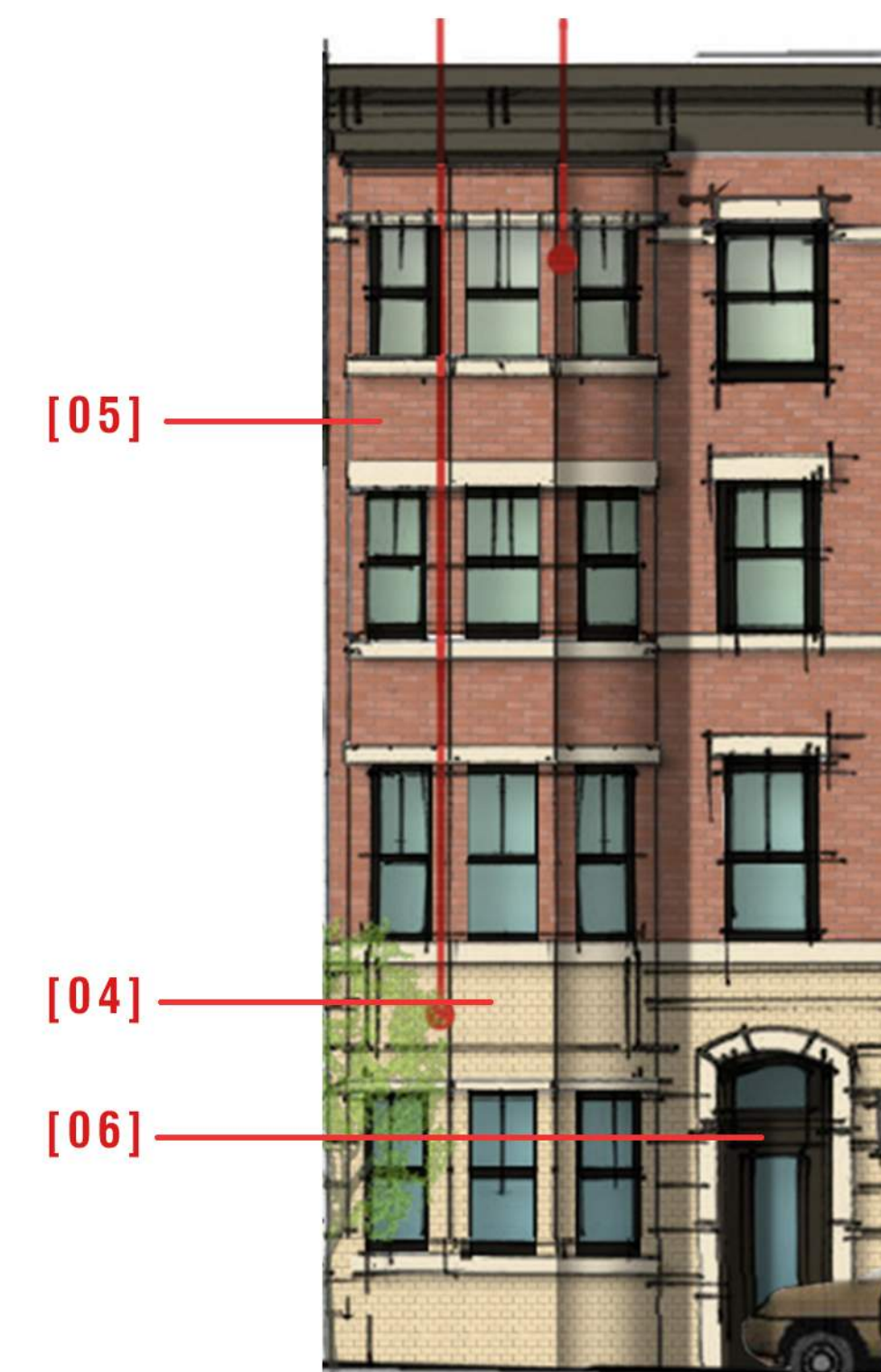


SCHEME #2



SCHEME #1B

SCHEME #1B (BASE BRICK)

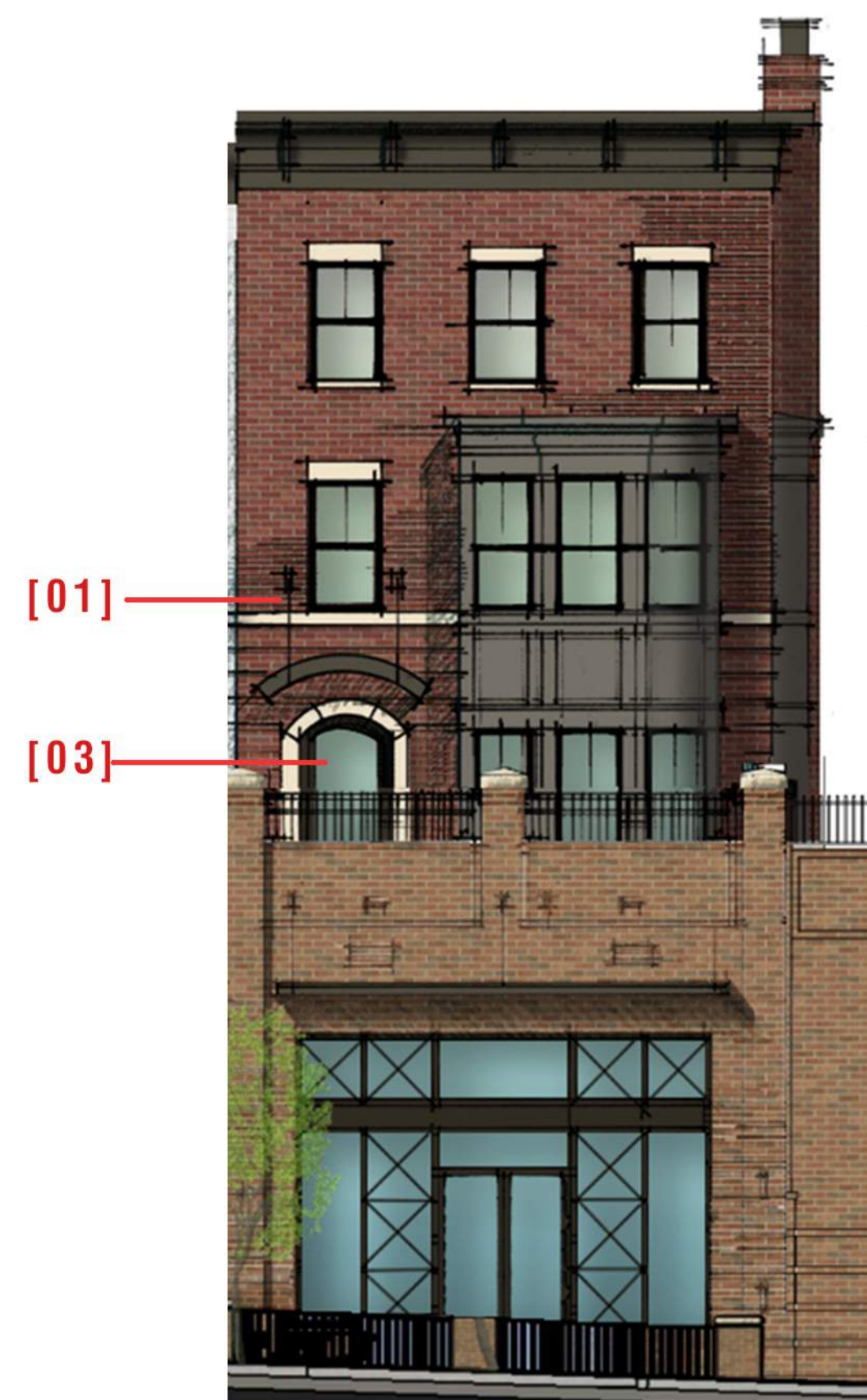


SCHEME #2B

SCHEME #2B (BASE BRICK)



SCHEME #3



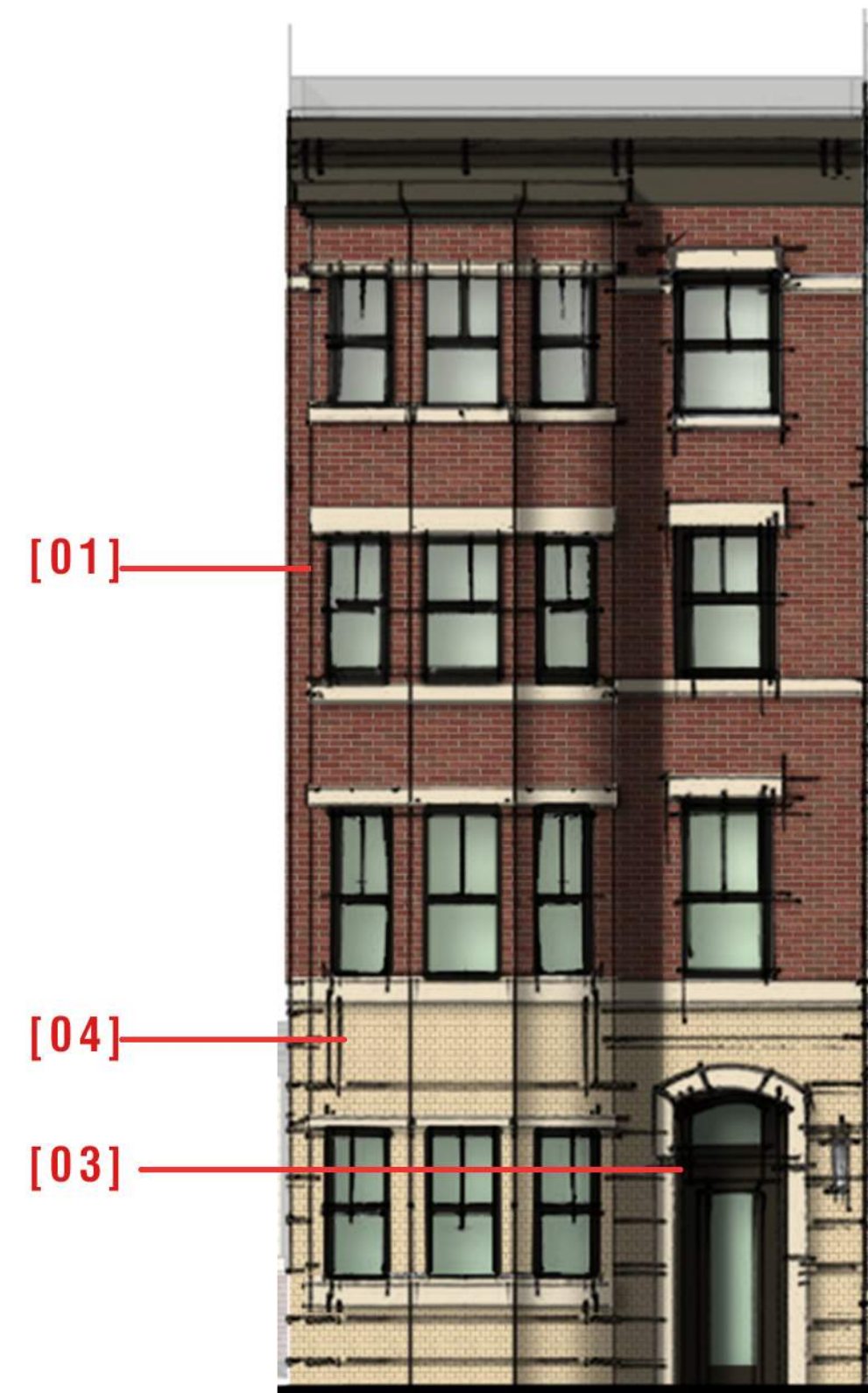
SCHEME #3



SCHEME #4



SCHEME #4

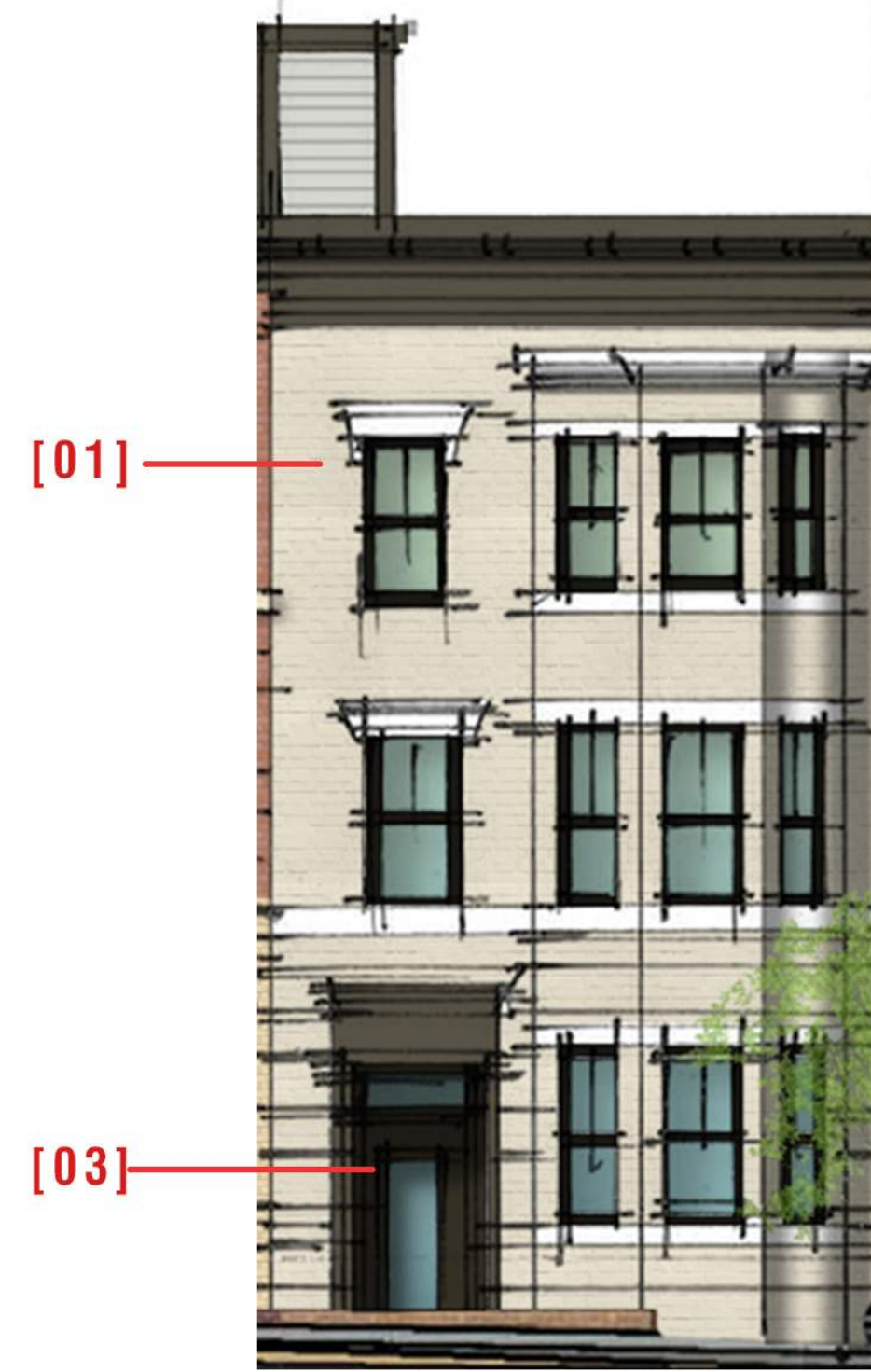


SCHEME #3B

SCHEME #3B (BASE BRICK)



SCHEME #5



SCHEME #5

PAINTED BRICK
SHERWIN WILLIAMS
ORIGAMI WHITE - SW 7636 [01]

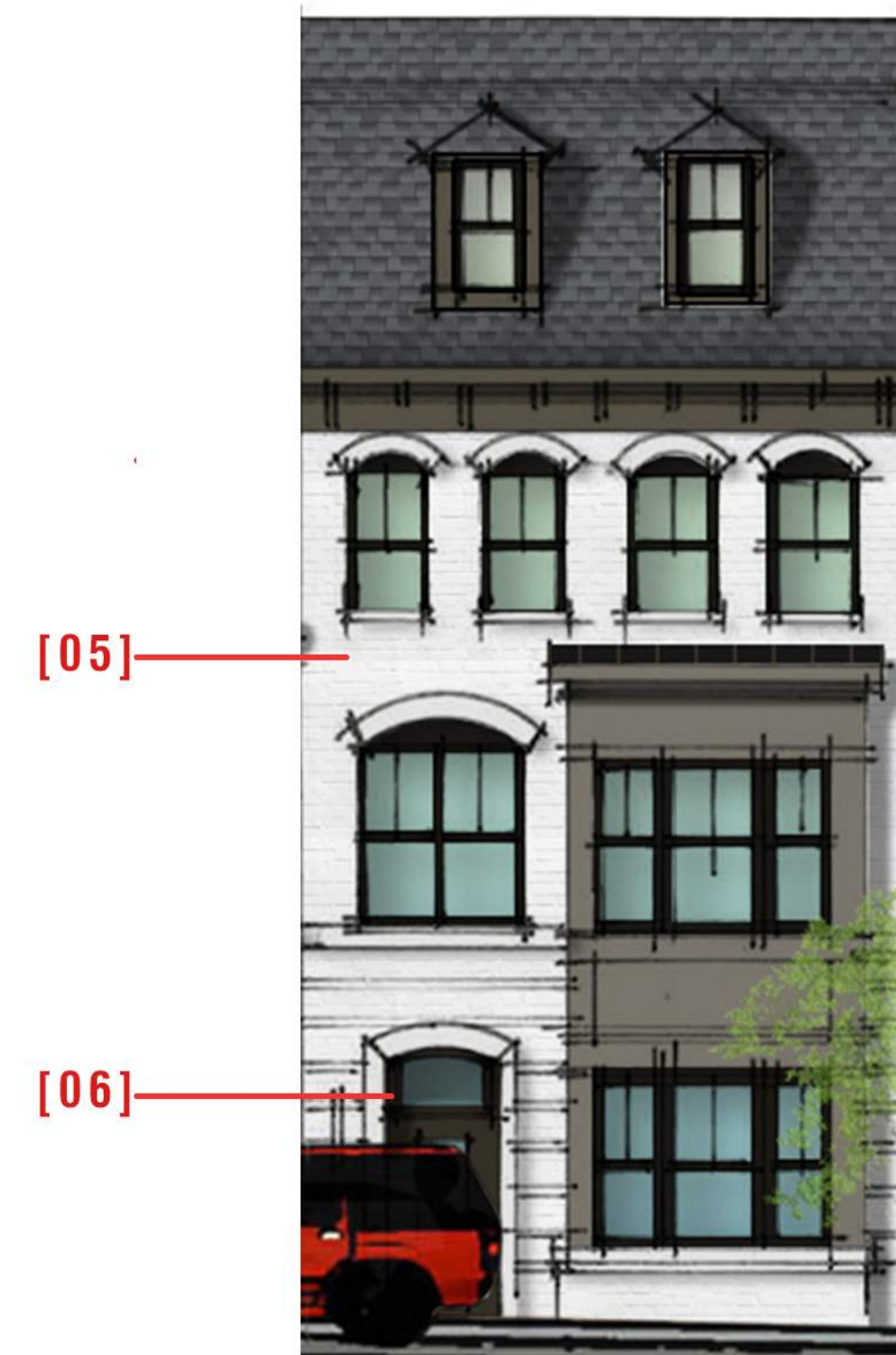
PAINTED BRICK COLOR
SHERWIN WILLIAMS
ORIGAMI WHITE - SW 7636 [01]

MORTAR
BRIXMENT
COLONIAL TAN [01]

SIDING
HARDIE PANEL
ARTIC WHITE [03]

FRONT DOOR
SHERWIN WILLIAMS
PEPPERCORN - SW 7674 [03]

GARAGE DOOR
SHERWIN WILLIAMS
DARK CLOVE - SW 9183 [03]



SCHEME #6

BRICK PAINT
SHERWIN WILLIAMS
DOVER WHITE - SW 6385 [05]

PAINTED BRICK COLOR
SHERWIN WILLIAMS
DOVER WHITE - SW 6385 [05]

MORTAR
BRIXMENT
COLONIAL TAN [05]

SIDING
HARDIE PANEL
SAIL CLOTH [06]

FRONT DOOR
SHERWIN WILLIAMS
PEPPERCORN - SW 7674 [06]

GARAGE DOOR
SHERWIN WILLIAMS
DARK CLOVE - SW 9183 [06]