

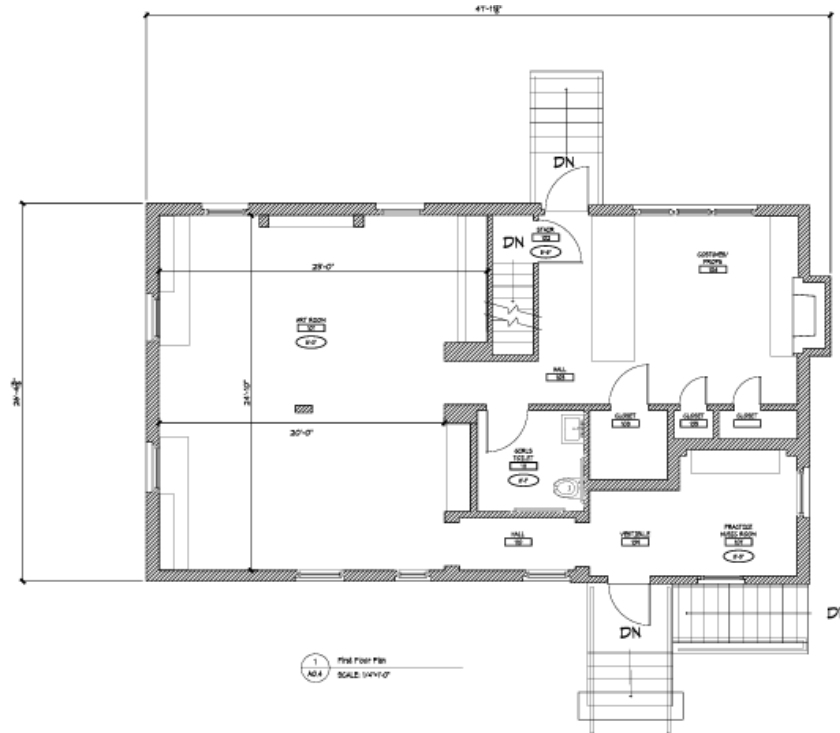
Detailed Educational Footprint Supplement Document

The following document provides details on the current and proposed academic space at The Green Hedges School.

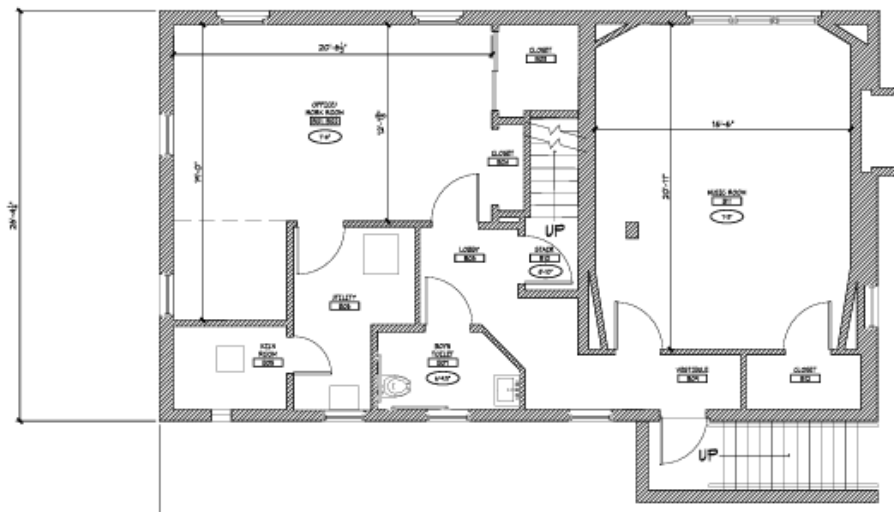
RICE ARTS CENTER (Existing Floor Plan)

Note: This building will be replaced in the proposed plan by the New Academic Building.

FIRST FLOOR



BASEMENT/GARDEN LEVEL

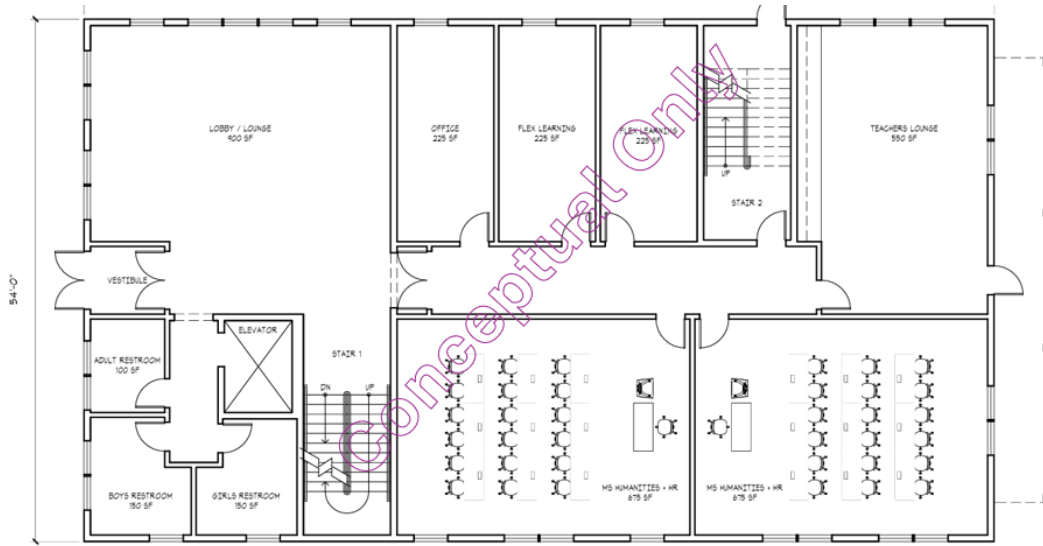


While the aging Rice Arts Center has served Green Hedges well since the early 2000’s—and been the home of cherished teachers and programs in English, art, and music—it was never intended to be an educational building. The instructional spaces are small, with limited storage for art and music supplies, limited movement space in the music room (really in all three rooms), and limited natural light throughout. As one faculty member humbly observed, “Our facilities aren’t fabulous, so we have to be,” an assessment that Rice Arts lives into on a daily basis.

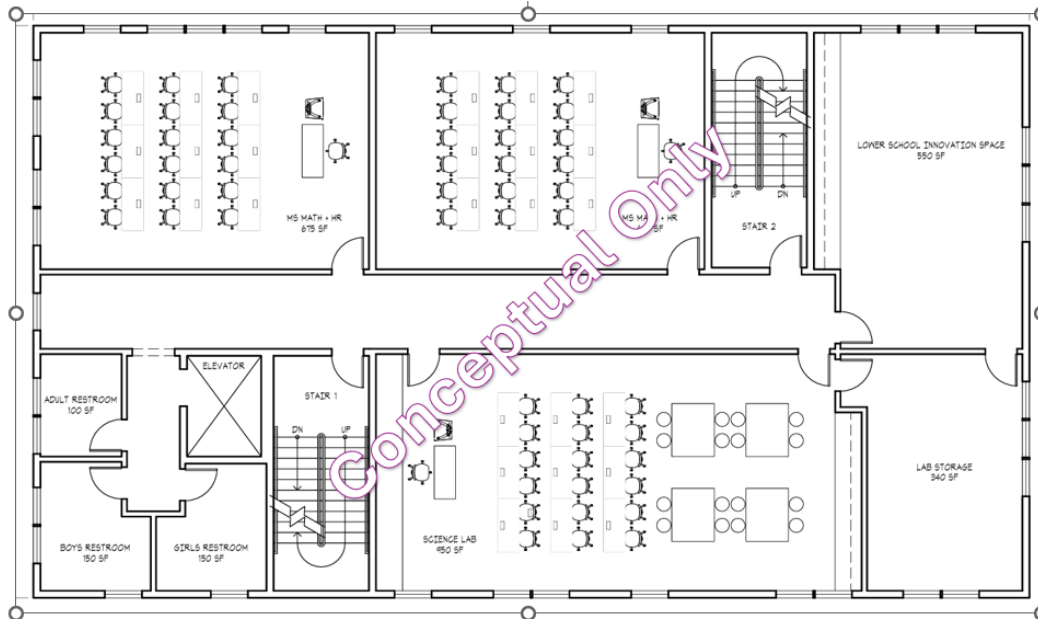
NEW ACADEMIC BUILDING: (Proposed Floor Plans)

NOTE: CONCEPTUAL FLOOR PLANS ONLY

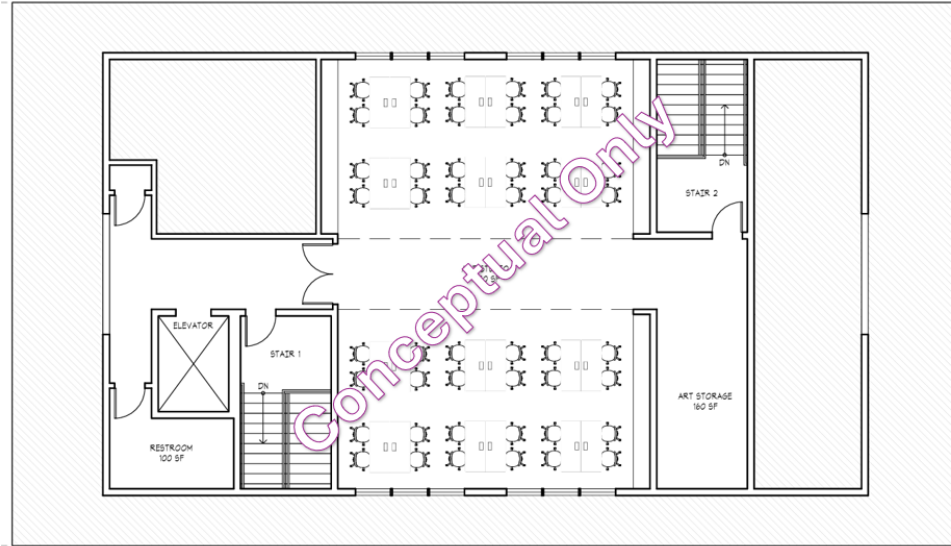
FIRST FLOOR



SECOND FLOOR

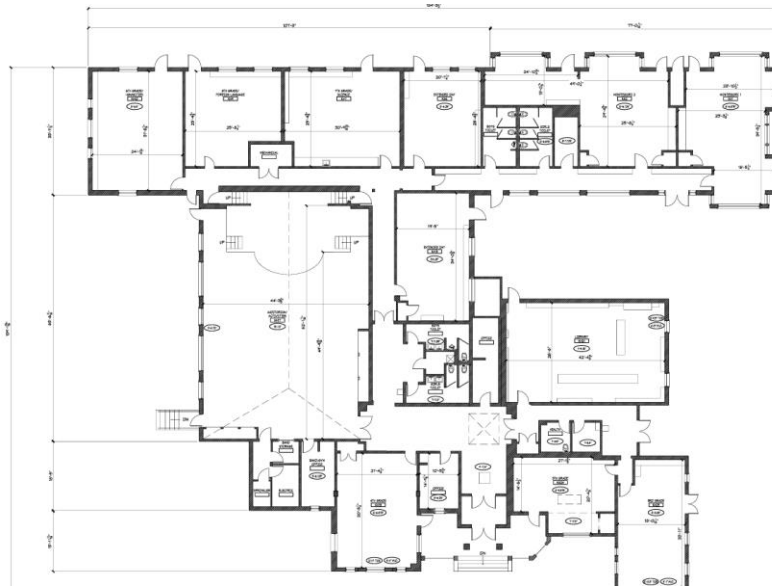


DORMERED THIRD FLOOR



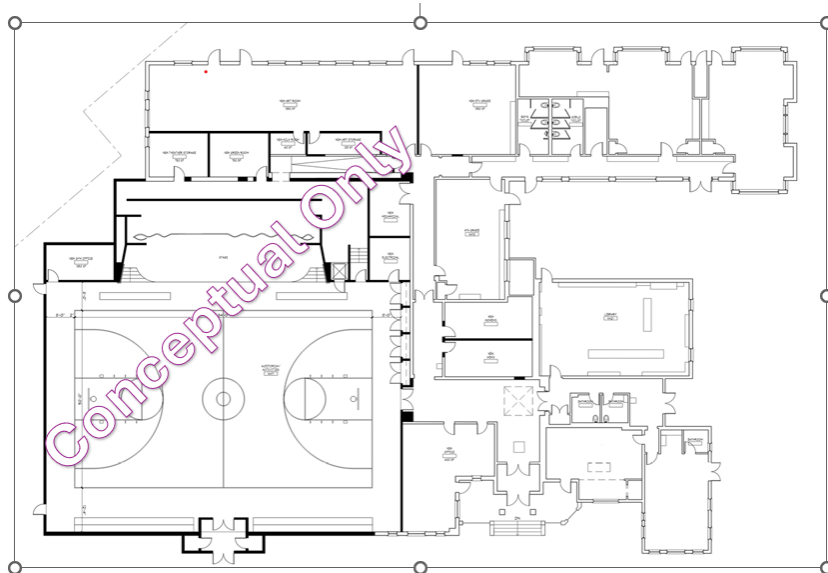
The proposed New Academic Building would replace Rice Arts with new, purpose-built spaces for teaching and learning; bring real coherence to the Middle School program, much of which would be located here, and enable greater coherence elsewhere for our Montessori and Lower School divisions; and offer the kind of instructional space one would expect in a competitive independent and public school marketplace. While the plans above are still in the conceptual stage, one can see ample core academic spaces for humanities (English and history) and math, along with flexible learning spaces for small-group work, tutoring, and advisory meetings. Also included are an art studio, with appropriate storage, and an innovation space, both of which can be used by Lower School students, as well as a science lab, also with appropriate set-up and storage space. The conceptual plan, which also shows gathering spaces for faculty and staff and for the Middle School community in small groups or in full, illustrates our commitment to academic excellence; creativity, innovation, and collaboration; and deep community.

KILMER HALL (Existing Floor Plan)



KILMER HALL (Proposed Floor Plan with Expanded Multipurpose Room)

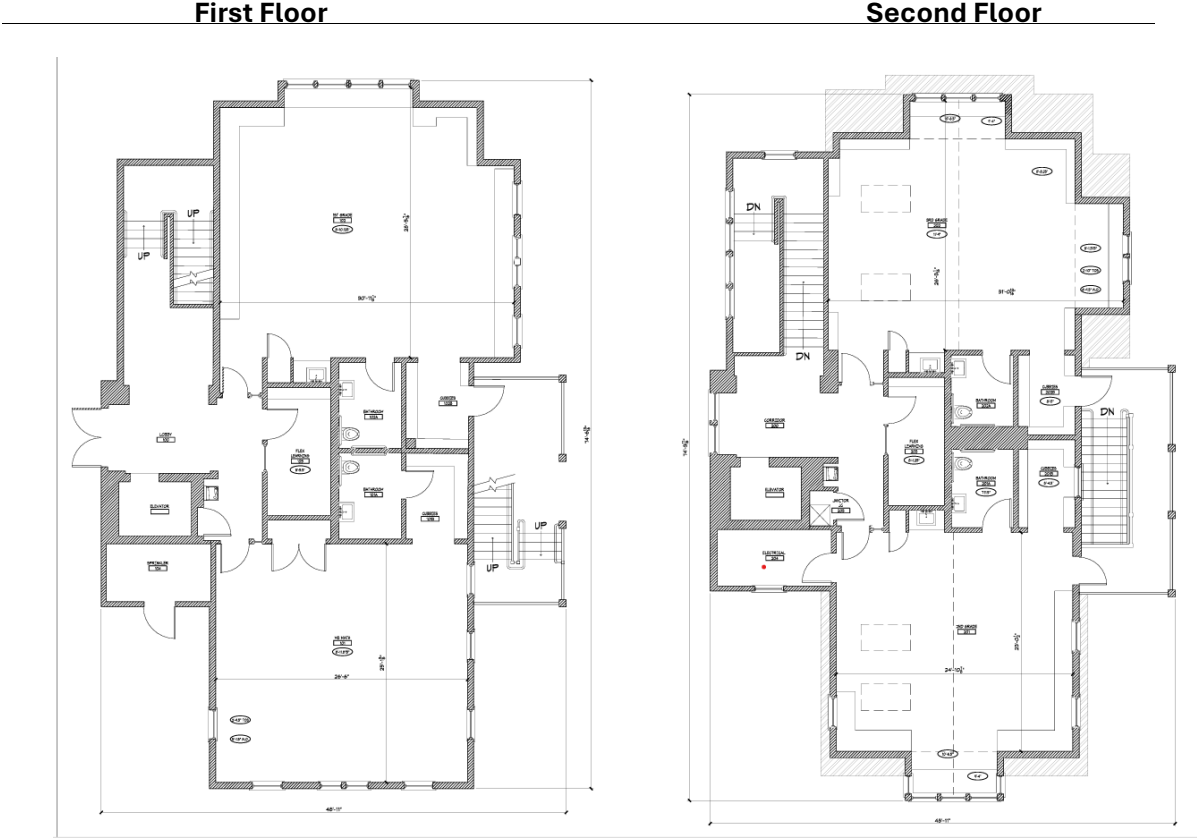
NOTE: CONCEPTUAL FLOOR PLANS ONLY



The beloved Kilmer Hall, long the heart of the student experience at Green Hedges, has been added onto, redesigned, and tinkered with over the years to meet immediate and emerging programmatic needs. We propose a more comprehensive redesign, renovation, and expansion that will work hand-in-hand with the proposed New Academic Building to provide an improved physical plant and programmatic coherence. In addition to an expansion of the Multi-Purpose Room to create a gymnasium and upgraded performance space, we plan to renovate the rest of the building to create more modern instructional spaces appropriate to the grade levels that inhabit them; promote creativity, exploration, and engaged and active learning; and achieve greater divisional coherence.

Current thinking has the Lower School (Grades 1-5) animating Kilmer Hall, thereby achieving a greater level of collaboration among the talented faculty members who shape that program. In addition to an exceptional academic core, Green Hedges values performing and studio arts and healthy physical and athletic activity. The combined gymnasium and performance space proposed for the expanded and renovated Kilmer Hall will provide the necessary facilities for those programs to flourish. Current thinking includes creating dedicated instrumental and vocal music classrooms, adjacent to the planned performance space.

THE STABLE (Existing Floor Plan – no proposed changes)



The twelve- or thirteen-year-old Stable would remain untouched as the Campus Plan unfolds. However, we are evaluating its use for our Montessori division, which would provide the final element of programmatic/divisional coherence referenced above. In addition, having all of our Montessori classrooms located in the Stable offers important implications for our arrival and dismissal procedures, significantly reducing processing times for vehicles dropping off students at the beginning of the day and picking them up at day’s end.