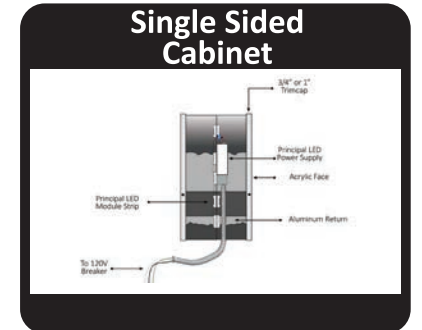
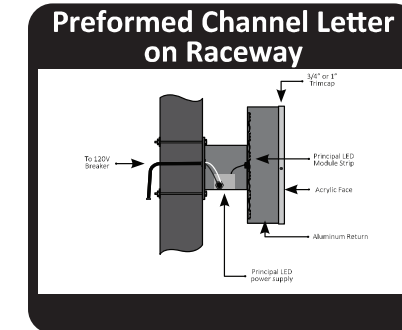
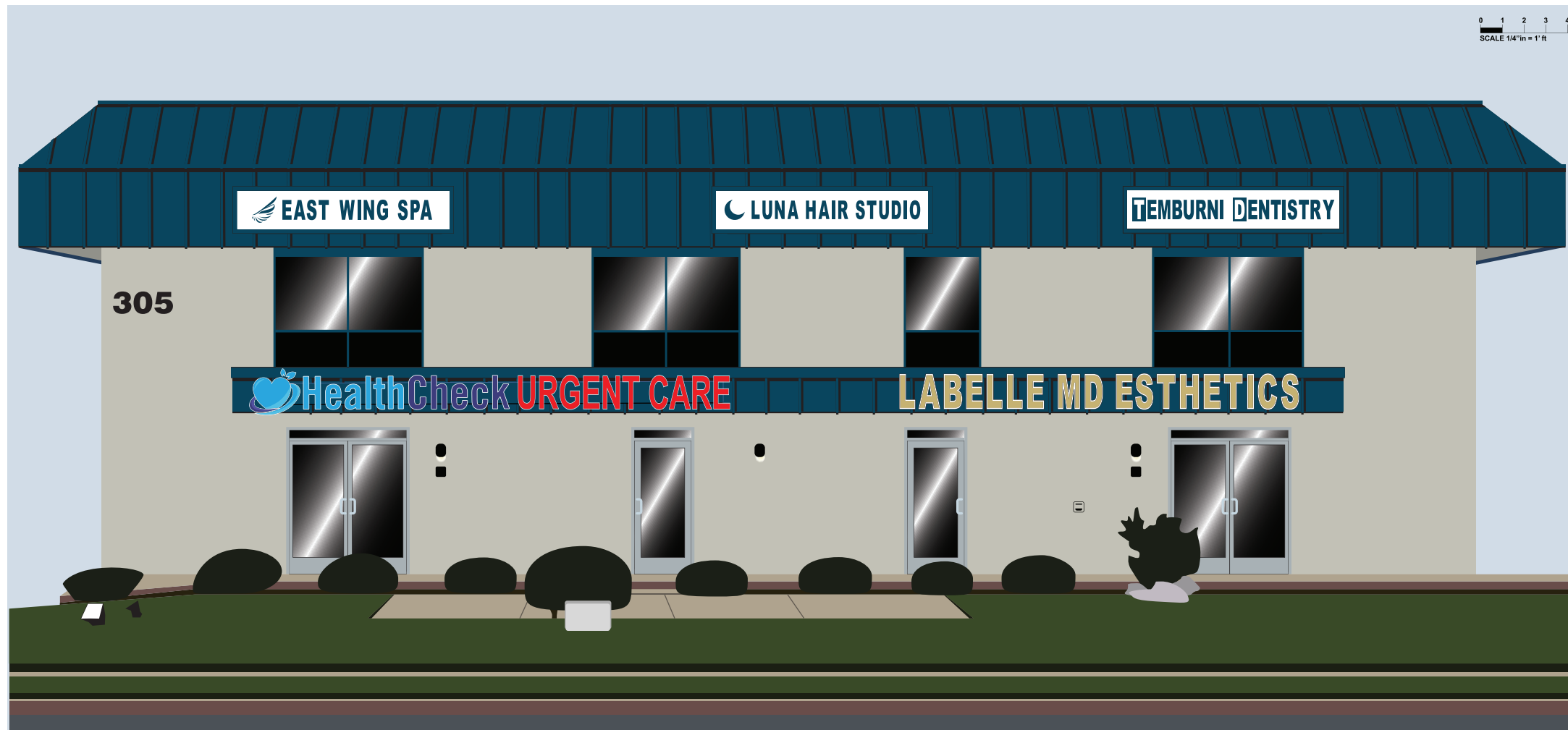


Vienna Township Architectural Review

Attachment 04

Facade Front Facing Rt.123 (Option A)



Specs: Two sets Preformed channel letters w/ polycarb faces and LED's - raceway mounted
Face: White polycarbonate w/ Rich Gold & White (Day) & White (Night) vinyl applied as per artwork.
Trim: 1" White.
Return: 4' pre-finished White / Interiors White.
Illumination: Principal QwikMod White PLQM2-TW150-P. 7100K, 118lm/w, 94.1 lm/mod, 3500 Kelvins.
Power Supplies: Principal P-OH060-12-EC 90-305VAC - rwy.
UL Specs: UL Listed w/ UL Labels
Drain Holes: Yes.
Electrical Holes: To raceway / Primary hole to be plugged (leave lead rolled up inside).
Mounting Holes: To raceway.
Raceway Info: EXTRUDED 7" Tall x 4.5" Deep x length above disconnect switch / painted SW 7008-23 Alabaster.
Hardware: external mounting brackets.

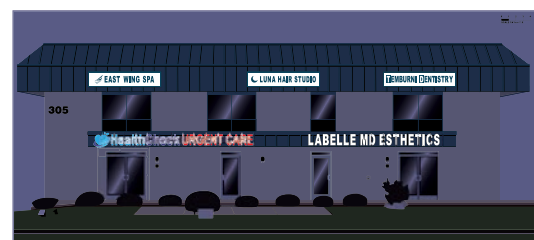
SQUARE FOOTAGE BREAKDOWN
STORE FRONT: 71'
CODE FORMULA: 2x Frontage
Allowed 142 Sq Ft

Proposed Signage (LaBelle Only)

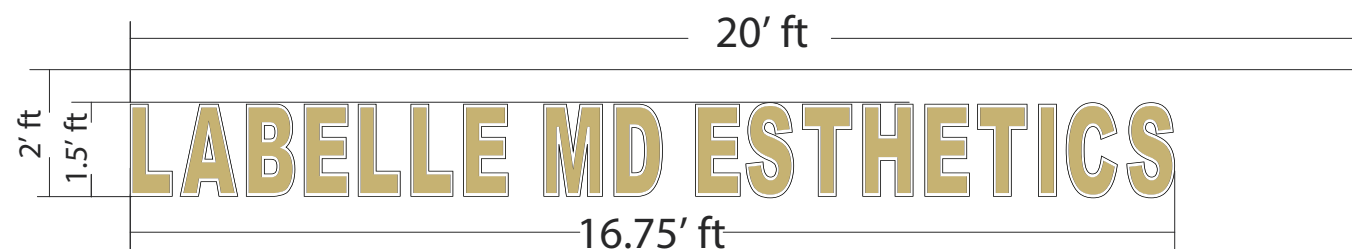
25.125' Sq Ft

Overall Signage

102.125' Sq Ft

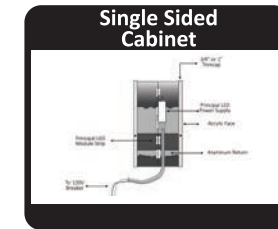
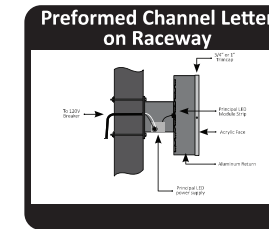


NIGHT VINYL



Vienna Township Architectural Review

Facade Front Facing Rt.123 (Option A)



Specs: Two sets Preformed channel letters w/ polycarb faces and LED's - raceway mounted
Face: White polycarbonate w/ Rich Gold & White (Day) & White (Night) vinyl applied as per artwork.
Trim: 1" White.
Return: 4' pre-finished White / Interiors White.
Illumination: Principal QwikMod White PLQM2-TW150-P. 7100K, 118lm/w, 94.1 lm/mod, 3500 Kelvins.
Power Supplies: Principal P-OH060-12-EC 90-305VAC - rwy.
UL Specs: UL Listed w/ UL Labels
Drain Holes: Yes.
Electrical Holes: To raceway / Primary hole to be plugged (leave lead rolled up inside).
Mounting Holes: To raceway.
Raceway Info: EXTRUDED 7" Tall x 4.5" Deep x length above disconnect switch / painted SW 7008-23 Alabaster.
Hardware: external mounting brackets.

Component	Color / Details
① .040 aluminum return	White
② 1" trim cap	White
③ 3/16" acrylic	White
④ Return depth	4"
⑤ Raceway #1	Extruded 7"H x 4.5"D x 198"L

Pantone	PMS RICH GOLD	WHITE
---------	---------------	-------

SQUARE FOOTAGE BREAKDOWN
STORE FRONT: 71'
CODE FORMULA: 2x Frontage
Allowed 142 Sq Ft

Proposed Signage (LaBelle Only)

25.125' Sq Ft

Overall Signage

102.125' Sq Ft



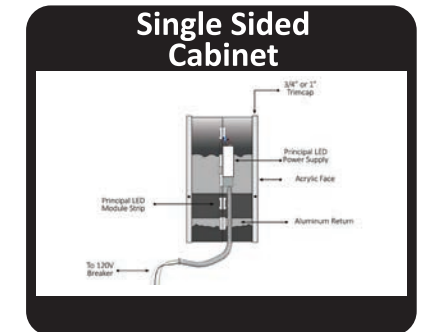
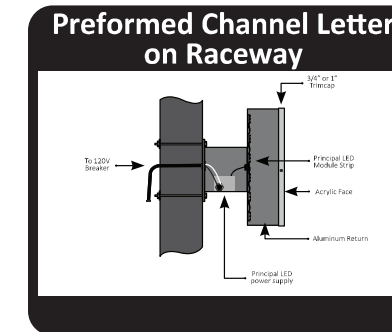
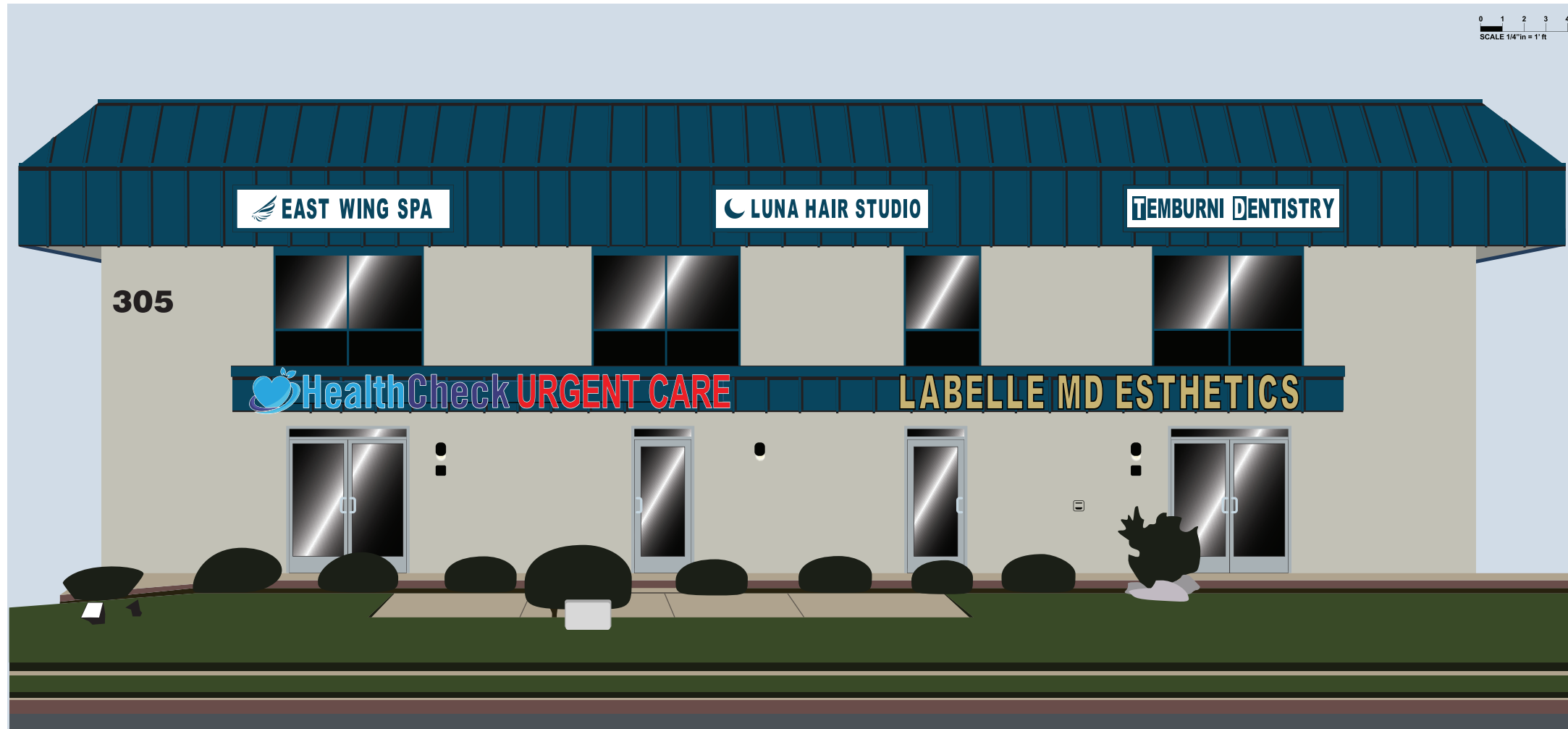
NIGHT VINYL



* Current Condition

Vienna Township Architectural Review

Facade Front Facing Rt.123 (Option B)



Specs: Two sets Preformed channel letters w/ polycarb faces and LED's - raceway mounted
Face: White polycarbonate w/ Rich Gold & Black (Day) & White (Night) vinyl applied as per artwork.
Trim: 1" White.
Return: 4' pre-finished White / Interiors White.
Illumination: Principal QwikMod White PLQM2-TW150-P. 7100K, 118lm/w, 94.1 lm/mod, 3500 Kelvins.
Power Supplies: Principal P-OH060-12-EC 90-305VAC - rwy.
UL Specs: UL Listed w/ UL Labels
Drain Holes: Yes.
Electrical Holes: To raceway / Primary hole to be plugged (leave lead rolled up inside).
Mounting Holes: To raceway.
Raceway Info: EXTRUDED 7" Tall x 4.5" Deep x length above disconnect switch / painted SW 7008-23 Alabaster.
Hardware: external mounting brackets.

SQUARE FOOTAGE BREAKDOWN
STORE FRONT: 71'
CODE FORMULA: 2x Frontage
Allowed 142 Sq Ft

Proposed Signage (LaBelle Only)

25.125' Sq Ft

Overall Signage

102.125' Sq Ft

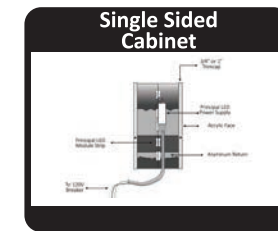
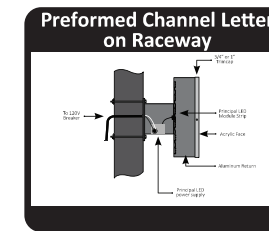


NIGHT VINYL



Vienna Township Architectural Review

Facade Front Facing Rt.123 (Option B)



Specs: Two sets Preformed channel letters w/ polycarb faces and LED's - raceway mounted
Face: White polycarbonate w/ Rich Gold & Black (Day) & White (Night) vinyl applied as per artwork.
Trim: 1" White.
Return: 4' pre-finished White / Interiors White.
Illumination: Principal QwikMod White PLQM2-TW150-P. 7100K, 118lm/w, 94.1 lm/mod, 3500 Kelvins.
Power Supplies: Principal P-OH060-12-EC 90-305VAC - rwy.
UL Specs: UL Listed w/ UL Labels
Drain Holes: Yes.
Electrical Holes: To raceway / Primary hole to be plugged (leave lead rolled up inside).
Mounting Holes: To raceway.
Raceway Info: EXTRUDED 7" Tall x 4.5" Deep x length above disconnect switch / painted SW 7008-23 Alabaster.
Hardware: external mounting brackets.

Component	Color / Details
① .040 aluminum return	Black
② 1" trim cap	Black
③ 3/16" acrylic	White
④ Return depth	4"
⑤ Raceway #1	Extruded 7"H x 4.5"D x 198"L

Pantone	PMS RICH GOLD	BLACK
---------	---------------	-------

SQUARE FOOTAGE BREAKDOWN
STORE FRONT: 71'
CODE FORMULA: 2x Frontage
Allowed 142 Sq Ft

Proposed Signage (LaBelle Only)

25.125' Sq Ft

Overall Signage

102.125' Sq Ft



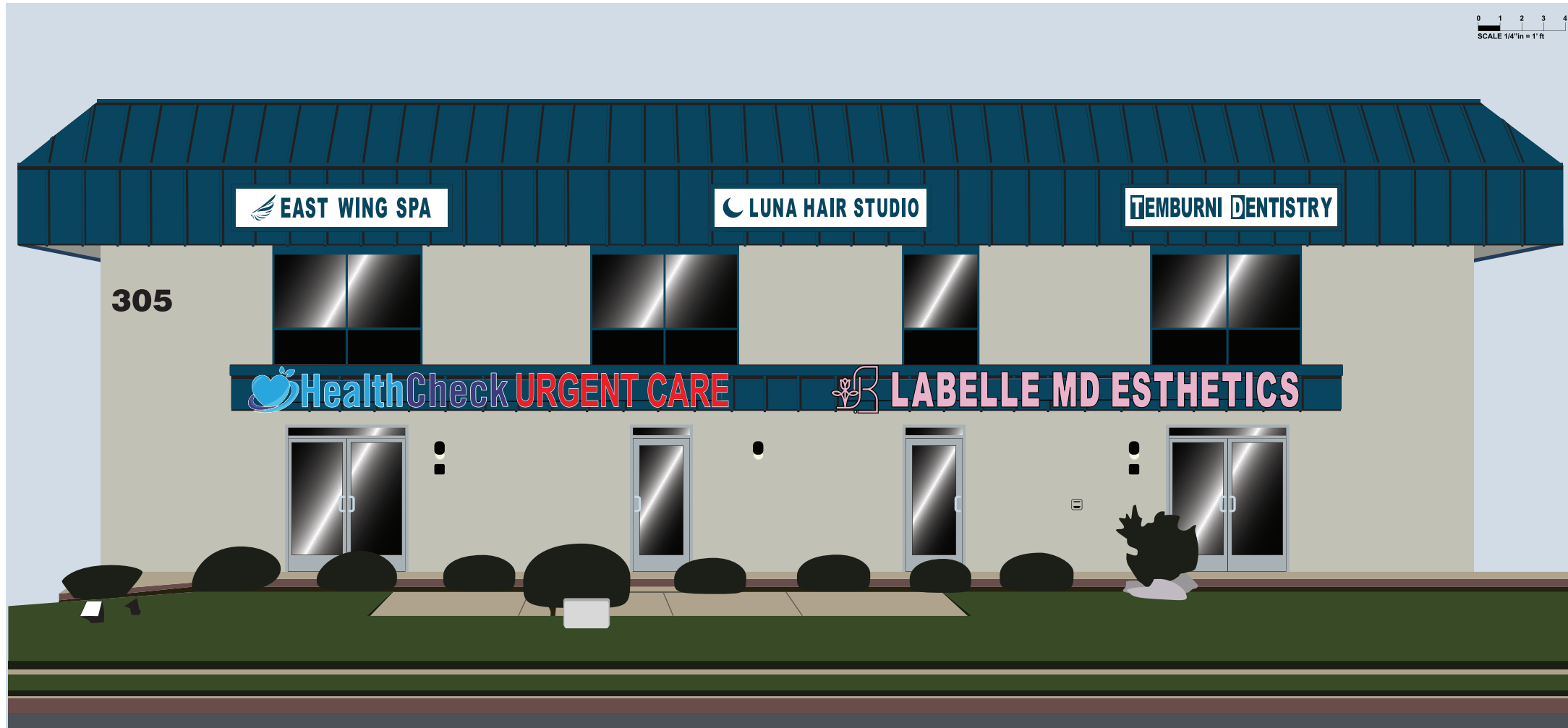
NIGHT VINYL



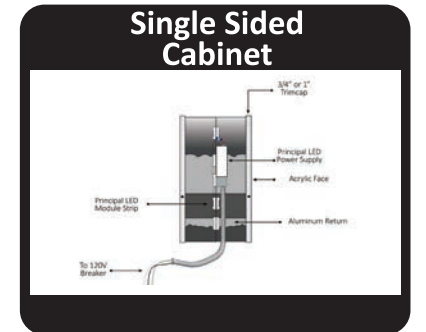
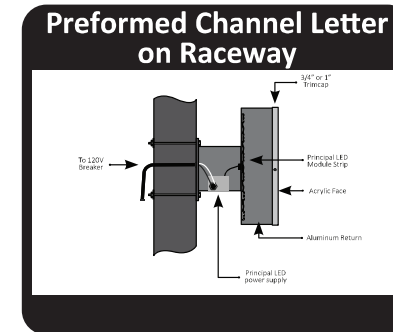
* Current Condition

Vienna Township Architectural Review

Facade Front Facing Rt.123 (Option C)



0 1 2 3 4
SCALE 1/4" = 1' ft



Specs: Two sets Preformed channel letters w/ polycarb faces and LED's - raceway mounted
Face: White polycarbonate w/ Rose Pink (Day) & White (Night) vinyl applied as per artwork.
Trim: 1" White.
Return: 4' pre-finished White / Interiors White.
Illumination: Principal QwikMod White PLQM2-TW150-P. 7100K, 118lm/w, 94.1 lm/mod, 3500 Kelvins.
Power Supplies: Principal P-OH060-12-EC 90-305VAC - rwy.
UL Specs: UL Listed w/ UL Labels
Drain Holes: Yes.
Electrical Holes: To raceway / Primary hole to be plugged (leave lead rolled up inside).
Mounting Holes: To raceway.
Raceway Info: EXTRUDED 7" Tall x 4.5" Deep x length above disconnect switch / painted SW 7008-23 Alabaster.
Hardware: external mounting brackets.

SQUARE FOOTAGE BREAKDOWN
STORE FRONT: 71'
CODE FORMULA: 2x Frontage
Allowed 142 Sq Ft

Proposed Signage (LaBelle Only)

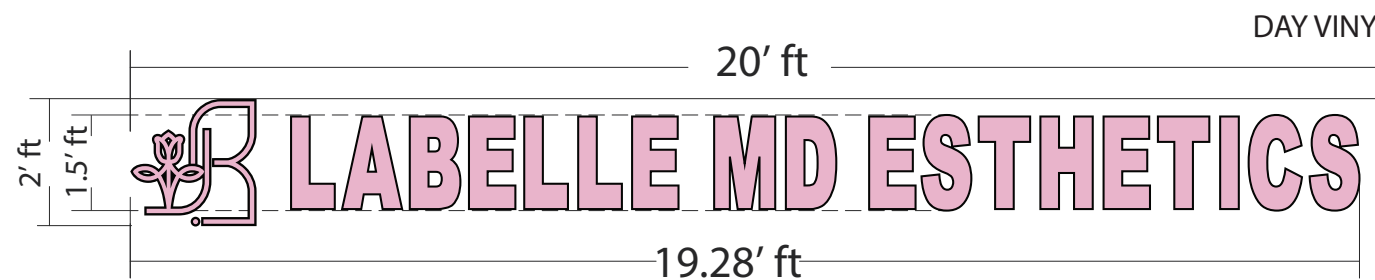
38.56' Sq Ft

Overall Signage

115.56' Sq Ft

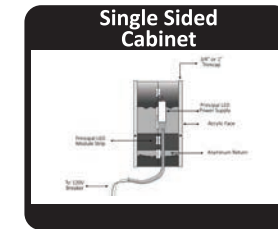
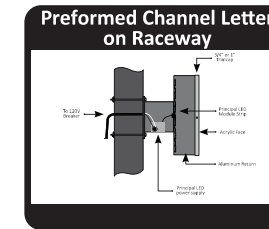


NIGHT VINYL



Vienna Township Architectural Review

Facade Front Facing Rt.123 (Option C)



Specs: Two sets Preformed channel letters w/ polycarb faces and LED's - raceway mounted
Face: White polycarbonate w/ Rose Pink (Day) & White (Night) vinyl applied as per artwork.
Trim: 1" White.
Return: 4' pre-finished White / Interiors White.
Illumination: Principal QwikMod White PLQM2-TW150-P. 7100K, 118lm/w, 94.1 lm/mod, 3500 Kelvins.
Power Supplies: Principal P-OH060-12-EC 90-305VAC - rwy.
UL Specs: UL Listed w/ UL Labels
Drain Holes: Yes.
Electrical Holes: To raceway / Primary hole to be plugged (leave lead rolled up inside).
Mounting Holes: To raceway.
Raceway Info: EXTRUDED 7" Tall x 4.5" Deep x length above disconnect switch / painted SW 7008-23 Alabaster.
Hardware: external mounting brackets.

Component	Color / Details
① .040 aluminum return	White
② 1" trim cap	White
③ 3/16" acrylic	White
④ Return depth	4"
⑤ Raceway #1	Extruded 7"H x 4.5"D x 198"L

Pantone	PMS P75-4C (Day)	WHITE (Night)
---------	------------------	---------------

SQUARE FOOTAGE BREAKDOWN
STORE FRONT: 71'
CODE FORMULA: 2x Frontage
Allowed 142 Sq Ft

Proposed Signage (LaBelle Only)

38.56' Sq Ft

Overall Signage

115.56' Sq Ft



NIGHT VINYL



DAY VINYL



* Current Condition



Vienna Township Architectural Review

Pylon on Rt. 123



* External Color Modification



Sherwin-Williams	Navy Blue	
Alternate Roofing Color		
Sherwin-Williams	Loyal Blue	

SQUARE FOOTAGE BREAKDOWN
STORE FRONT: 71'
CODE FORMULA: TBD (1x Frontage)
Allowed 142 Sq Ft

Total Proposed Signage
111 Sq Ft

Vienna Township Architectural Review

Pylon on Rt. 123



* External Color Modification



* Current Condition



Sherwin-Williams Navy Blue

Alternate Roofing Color
Sherwin-Williams Loyal Blue

SQUARE FOOTAGE BREAKDOWN
STORE FRONT: 71'
CODE FORMULA: TBD (1x Frontage)
Allowed 142 Sq Ft

Total Proposed Signage
111 Sq Ft