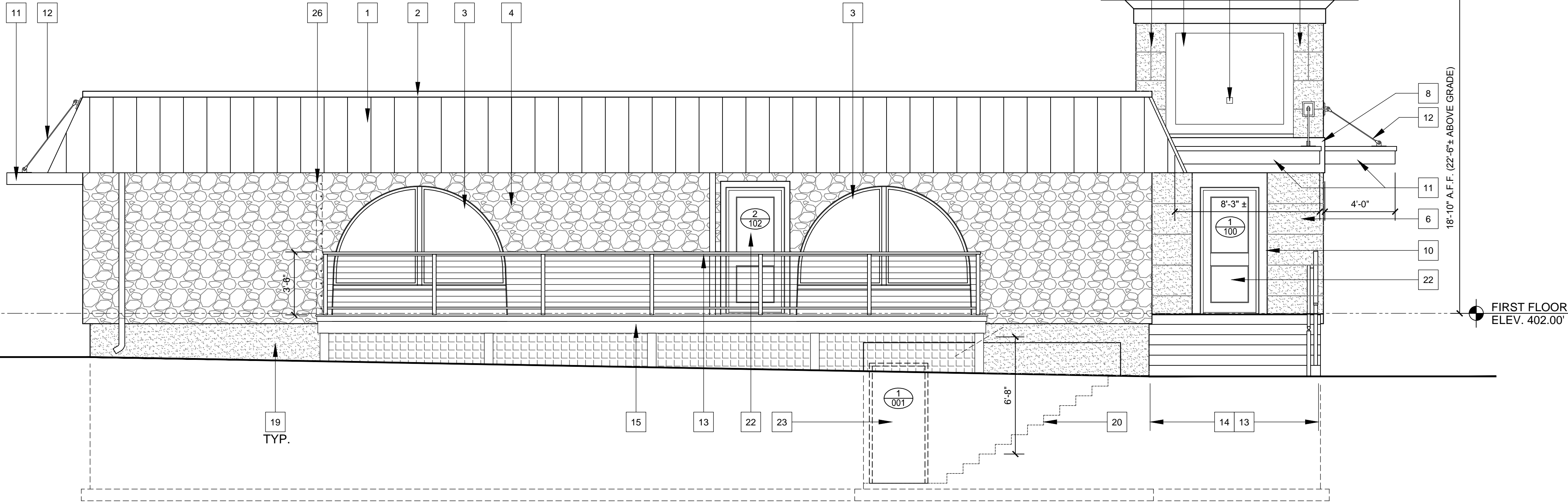


EXTERIOR DOOR SCHEDULE										
DOORS						FRAMES				
NO.	WIDTH	HEIGHT	THICK.	RATING	TYPE	MATERIAL	MATERIAL	TYPE	RATING	REMARKS
1/001	3'-0"	6'-8"	1 3/4"			HOLLOW METAL	HOLLOW METAL			SIMILAR HARDWARE TO 1/109.
1/100	3'-0"	6'-8"	1 3/4"			ALUMINUM STOREFRONT	ALUMINUM			
2/100	(2) 3'-0"	6'-8"	1 3/4"			ALUMINUM STOREFRONT	ALUMINUM			
1/102	3'-6"	6'-8"	1 3/4"			ALUMINUM STOREFRONT	ALUMINUM			
2/102	3'-0"	6'-8"	1 3/4"			ALUMINUM STOREFRONT	ALUMINUM			
1/109	3'-6"	6'-8"	1 3/4"			HOLLOW METAL	HOLLOW METAL			

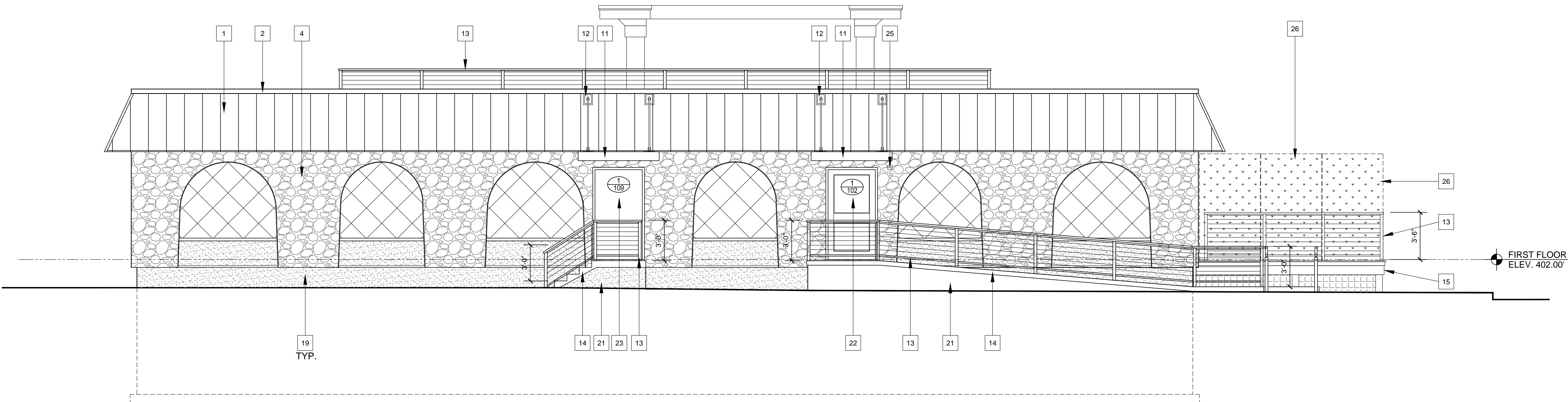
NOTE: HARDWARE SCHEDULE FOUND ON INTERIOR TENANT FIT-OUT PACKAGE.

- ELEVATION KEYNOTE LEGEND
- REMOVE CLAY TILE. REPLACE WITH STANDING SEAM METAL ROOFING SYSTEM. COLOR: CHARCOAL
  - ALUMINUM WALL CAP FLASHING TO MATCH STANDING SEAM ROOF SYSTEM
  - EXISTING STOREFRONT WINDOWS. REPAIR AS REQUIRED AND PAINT BLACK.
  - EXISTING STONE VENEER TO REMAIN - PATCH AND CLEAN AS REQUIRED TO MATCH. PAINT WHITE
  - PRE-FINISHED ALUMINUM GRAVEL STOP COPING
  - WATER MANAGED EIFS SYSTEM OVER 5/8" DENSGLAS SHEATHING - COLOR: DOVE GRAY - SAND PEBBLE FIN.
  - WATER MANAGED EIFS SYSTEM OVER 5/8" DENSGLAS SHEATHING - COLOR: WHITE - SAND PEBBLE FINISH
  - WATER MANAGED EIFS SYSTEM OVER 5/8" DENSGLAS SHEATHING ON BAND - COLOR: WHITE
  - NEW STORE FRONT WINDOW IN ALUMINUM STOREFRONT FRAMING WITH 1" INSULATION GLASS.
  - 5/8" CELLULAR COMPOSITE TRIM AROUND WINDOW AND DOOR.
  - ALUMINUM CANOPY BY MAPES ARCHITECTURAL CANOPIES [mapescanopies.com, PHONE (888) 273-1132]. KYNAR COLOR: CLEAR ANODIZED ALUMINUM.
  - GALVANIZED STEEL CONNECTION ROD FRAMING ASSEMBLY, SUPPLIED BY CANOPY MANUFACTURER.
  - TREX SIGNATURE ALUMINUM RAILING SYSTEM w/ ROD RAIL KIT - COLOR: BLACK
  - NEW CONCRETE STAIR, LANDING OR RAMP. SEE NOTE #21 FOR VERTICAL FINISH.
  - TREATED WOODEN DECK WITH COMPOSITE DECKING SYSTEM
  - REPAIR EXISTING BRICK BASE COURSE WHERE LOOSE. APPLY CEMENT PARGE COAT
  - 3/4" CELLULAR PVC TRIM - PRIME AND PAINT
  - CLEAN EXISTING BRICK SURFACE BEFORE DIRECTLY APPLYING NEW DRYVIT SYSTEM BELOW ALL WINDOWS - COLOR: WHITE - FINISH: QUARTZPUTS
  - CEMENT PARGE-COAT OVER EXISTING BRICK FOUND. WALL. PAINT PARGE-COAT. COLOR: CHARCOAL
  - EXISTING BASEMENT STAIRS TO REMAIN. DIMENSION SHOWN IS REQUIRED OVERHEAD CLEARANCE.
  - GRIND FACE OF POURED CONCRETE WALL SMOOTH AND BAG RUB FOR FINISH.
  - NEW ALUMINUM STOREFRONT DOOR w/ BLACK KYNAR FINISH.
  - NEW INSULATED HOLLOW METAL DOOR, PAINT COLOR: BLACK.
  - NEW WEATHERPROOF JUNCTION BOX BEHIND PARAPET FOR EXTERIOR SIGNAGE.
  - NEW WEATHERPROOF JUNCTION BOX LOCATED UNDER CANOPY FOR EXTERIOR SIGNAGE.
  - ACOUSTIFENCE SOUND BARRIER WITH APPLIED ARTIFICIAL FOLIAGE PANELS. (1-800-980-1400)



LEFT SIDE (SOUTHWEST) ELEVATION

SCALE: 1/4" = 1'-0"



REAR (NORTHWEST) ELEVATION

SCALE: 1/4" = 1'-0"

REVISIONS		REMARKS	
NO.	DATE		

CERTIFY THAT THESE DOCUMENTS WERE PREPARED OR REVIEWED BY A LICENSED ARCHITECT UNDER THE LAWS OF THE COMMONWEALTH OF VIRGINIA.

310 HAMMOND ST. • SUITE 100 • SALISBURY, MARYLAND 21801  
(410) 749-7229 • FAX (410) 749-0001

THE MAPLE ROOM  
MAC ST. HOSPITALITY GROUP LLC  
377 MAPLE AVENUE WEST  
VIENNA, VIRGINIA

REAR AND LEFT SIDE ELEVATIONS

THE MAPLE ROOM  
MAC ST. HOSPITALITY GROUP LLC  
377 MAPLE AVENUE WEST  
VIENNA, VIRGINIA

REAR AND LEFT SIDE ELEVATIONS

THE MAPLE ROOM  
MAC ST. HOSPITALITY GROUP LLC  
377 MAPLE AVENUE WEST  
VIENNA, VIRGINIA

REAR AND LEFT SIDE ELEVATIONS

DATE: DEC 2, 2021  
IOTT PROJ. NO.: 20-065  
DESIGN BY: KI  
DRAWN BY:  
SCALE: 1/4" = 1'-0"  
STAGE: RESUBMISSION  
DWG. FILE: 20-065 A300

A  
301