

Project General Information

Scope:

Replacement of the existing library with an expanded state-of-the-art library and a new parking garage

Partnership with the Town of Vienna:

The County and the Town are jointly funding the parking structure to provide parking for the library and the Town

Sustainability Goals:

- Net zero energy design
- LEED Gold
- 50% energy reduction over ASHRAE baseline
- All electric systems and equipment



Location:

- 101 Maple Avenue, Vienna, VA
- 1.43 Acre Site
- Bus stop located in front of the site along Maple Avenue
- Access to the Vienna Elementary School through the site

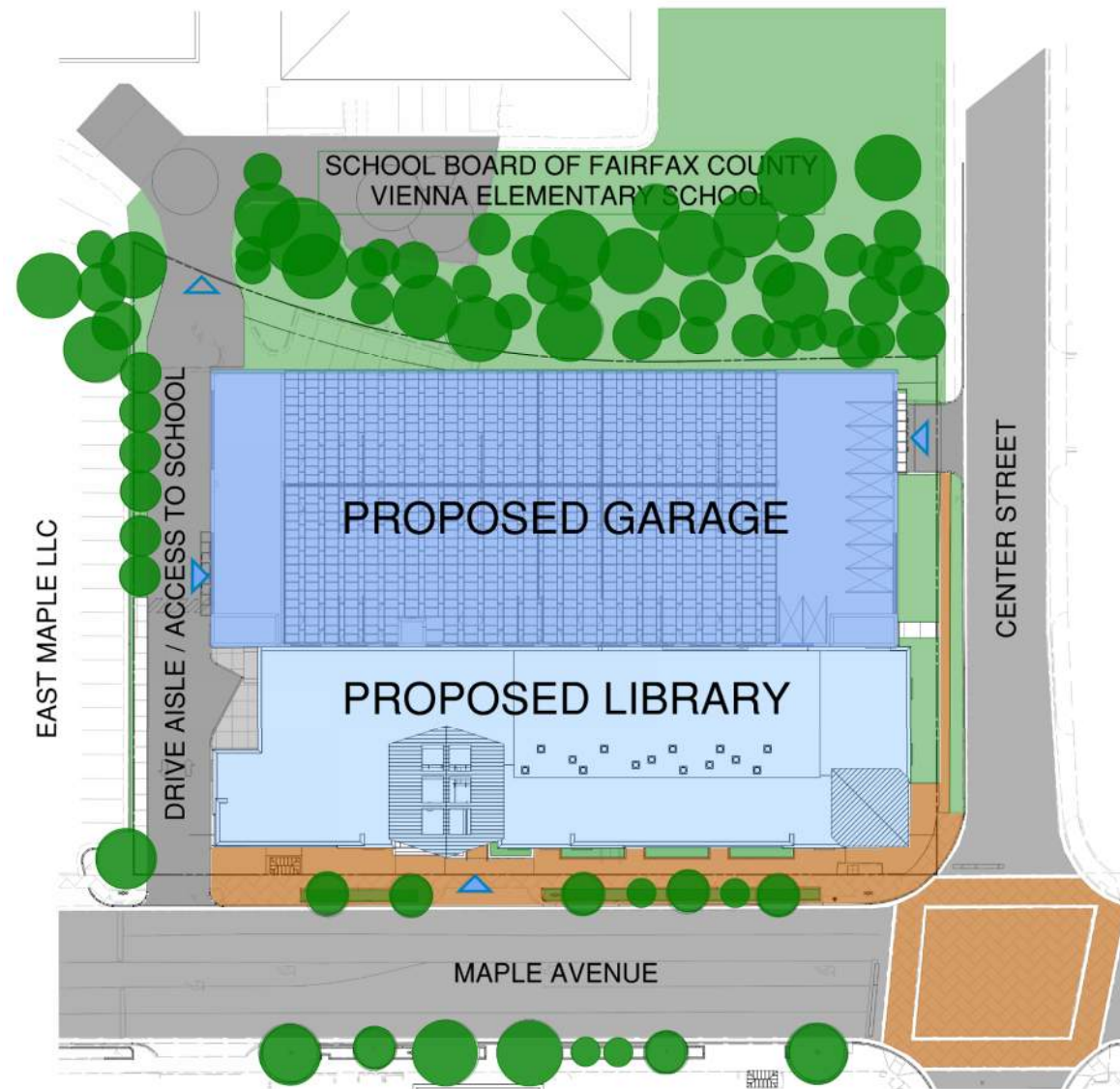
Existing library:

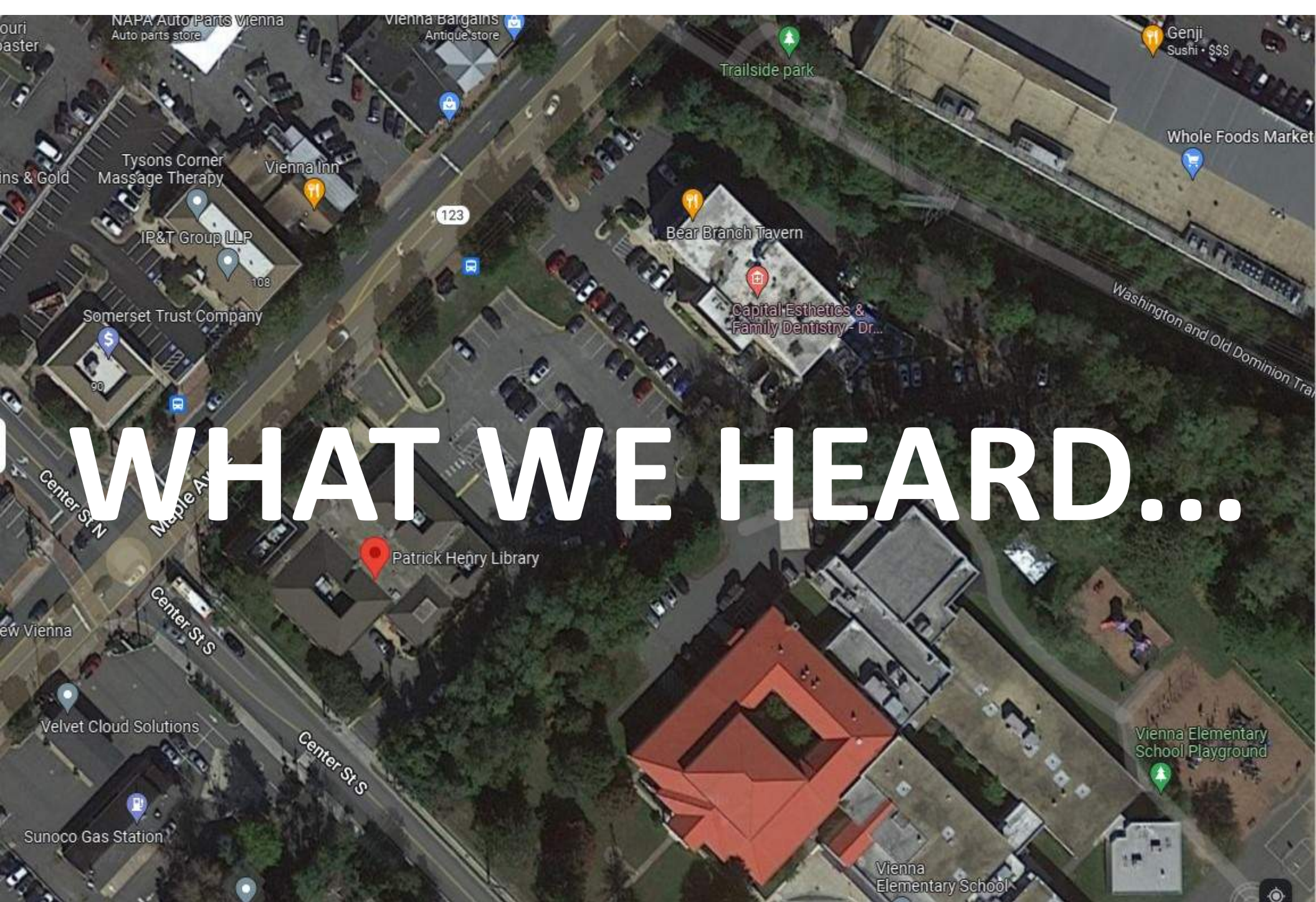
- Built in 1971 and expanded in 1995
- 13,800 SF building area – 1 floor
- Insufficient parking to meet the needs of the library
- Outdated building systems
- Building layout does not allow for enhanced library operations of today and the future



Site development:

- The building footprint has been maximized based on the requirements of the library program
- A waiver for the required setbacks and tree canopy will be requested
- Maple Avenue frontage will be a combination of existing tree planting areas, brick sidewalk and seat walls / planting areas up against the building
- Provide a generous covered entry plaza approximately in the middle of the Maple Avenue block for outdoor reading and community gathering
- The parking garage will provide 209 parking spaces – 125 spaces for the library and 84 spaces for the Town of Vienna
- Maintain access to the back of Vienna Elementary School through the newly created drive aisle from Maple Avenue





Patrick Henry Library – Revised Design – 11/30/22

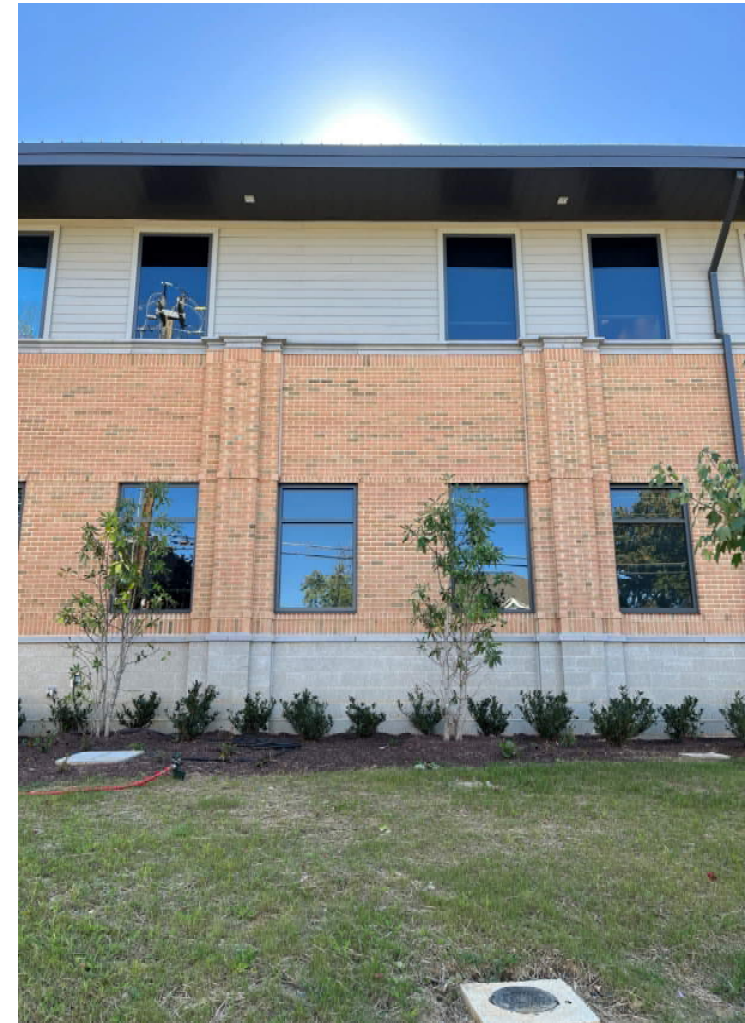
■ Use new police station for inspiration

- Simple hip roof forms
- Uses brick, stone, glass and “wood” plank
- Set on a much more residential street



What We Heard - BAR

- Liked “rose” colored brick similar to the new police station.
 - Brick used here is really similar to the “tan brick” we showed in the presentation to BAR.
 - This brick has more variety – flashes of grey and brown.
 - Pilasters employed here make sense on a pavilion building like this but probably not on the library which is a collection of forms and not one mass.
 - BAR & Town Council had varied preferences for the brick color



What We Heard - BAR

- **Focus on the pedestrian streetscape along Maple Avenue & Center Street.**
 - Sidewalk width is an issue – example photos are at least twice as wide as our context.
 - Beginning to engage a landscape architect
 - We are in agreement that the streetscape should be as lively as possible.
 - Saving trees and work in the right of way?
 - Saving brick pavers with names on them.

Preferred Images

(Average score of 3 stars or more, in descending order)



- Use Cube Smart storage for inspiration.



What We Heard - BAR

- Employ a variety of roof forms – a mixture of sloped and flat.



Fig. 39-25

Courtesy of Dr. Paul Richmond



Fig. 39-26



Fig. 39-27

Old Station, Fairfax, Va.



Fig. 39-28
Finkner Building—1930s.

Courtesy of Mr. & Mrs. Robert Hunter



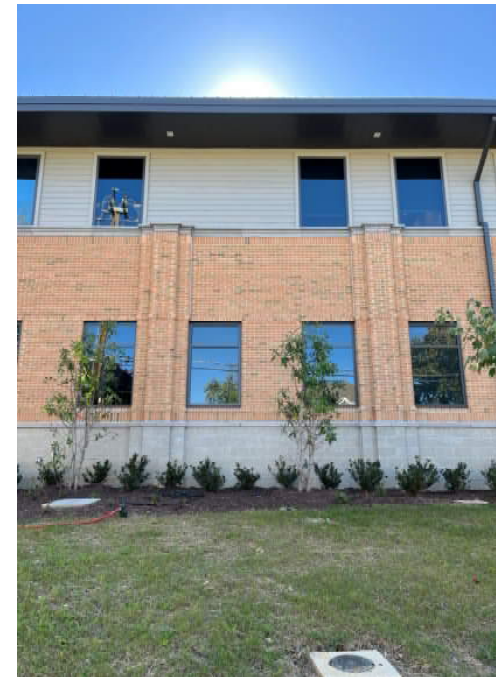
What We Heard - BAR

- Develop the design of the garage. Incorporate library elements. Break up massing.



What We Heard - BAR

- Investigate screening the solar panels (Patel)
- Liked red brick (Patel)
- Look at CubeSmart (Springsteen)
- Bike parking in garage (Somers)
- Need a more developed garage stair tower. Don't like grey block (Somers)
- Green living wall on garage (Somers)
- Liked tan brick (Somers)
- Look at brick on Vienna ES and new police station (Colbert)
- Create an exhibit showing existing and proposed sidewalk / right of way / setback conditions with dimensions.

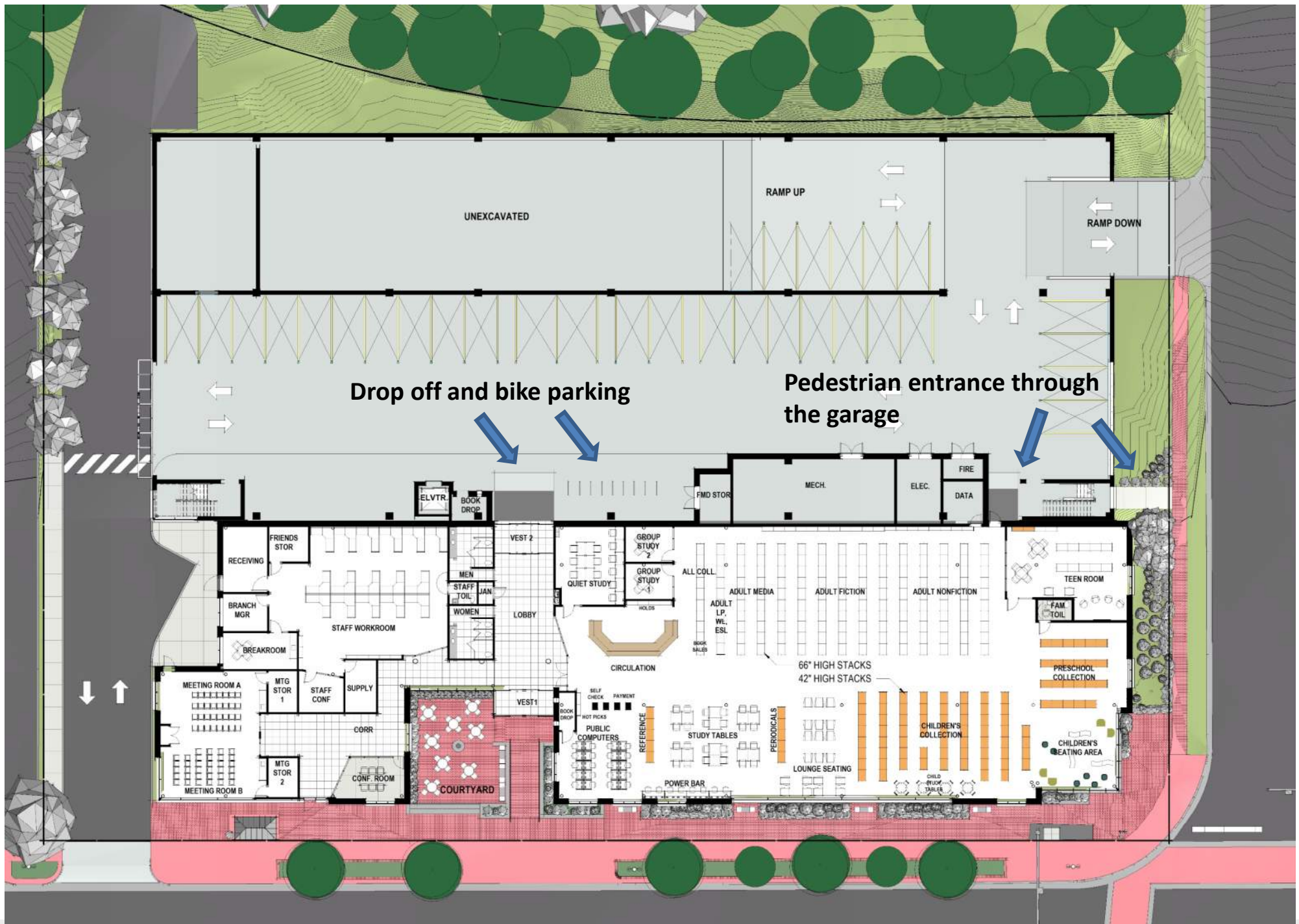


What We Heard – Town Council



REVISED DESIGN...

Patrick Henry Library – Revised Design – 11/30/22



Building / Site Plan

Before



After



Maple Avenue Elevation



Before



After



Corner View - Day

Evening



Night



Corner View – Evening & Night





Corner View - Closeup



Entry Plaza - Before



Entry Plaza - After



Aerial from the North



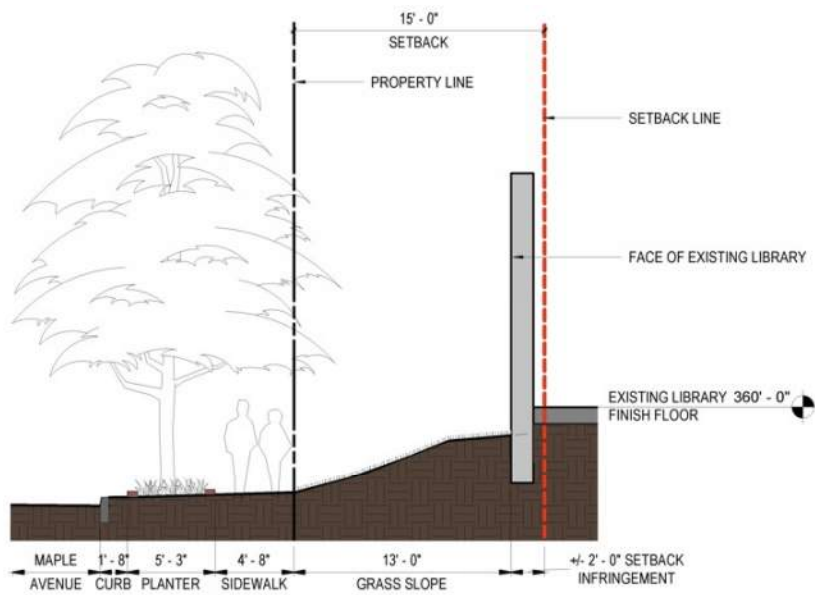
Aerial from the West



Aerial from the East

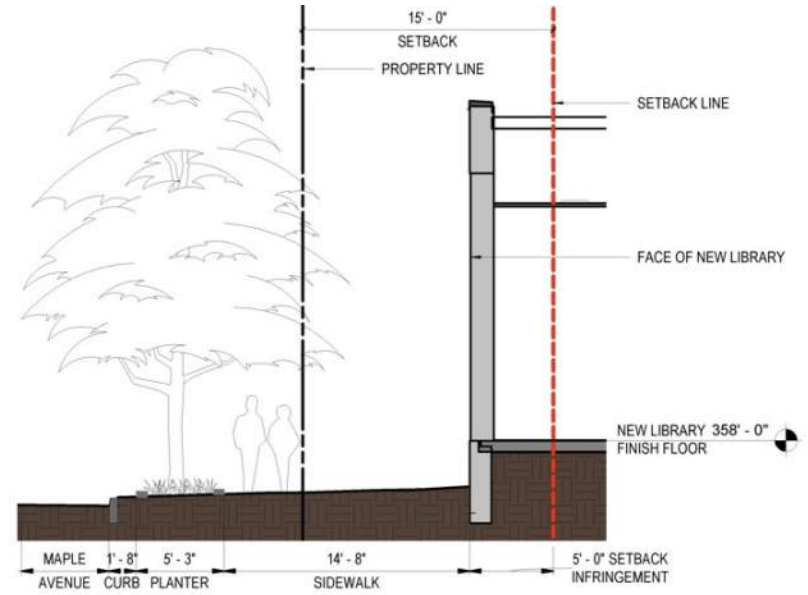


Center Street and Maple Avenue Elevations



EXISTING SIDEWALK SECTION

SCALE: 3/16" = 1'-0"



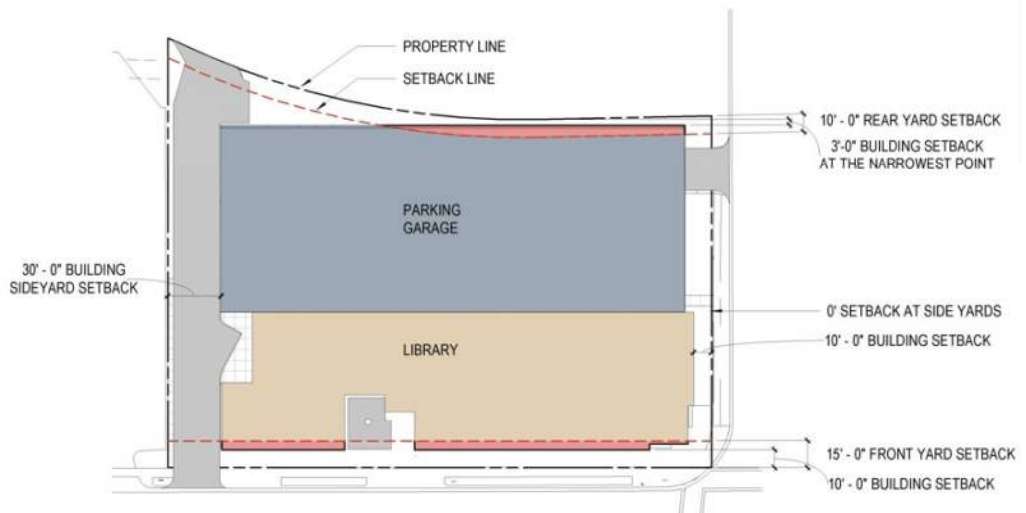
PROPOSED SIDEWALK SECTION

SCALE: 3/16" = 1'-0"



EXISTING SETBACK PLAN

SCALE: 1" = 50'-0"

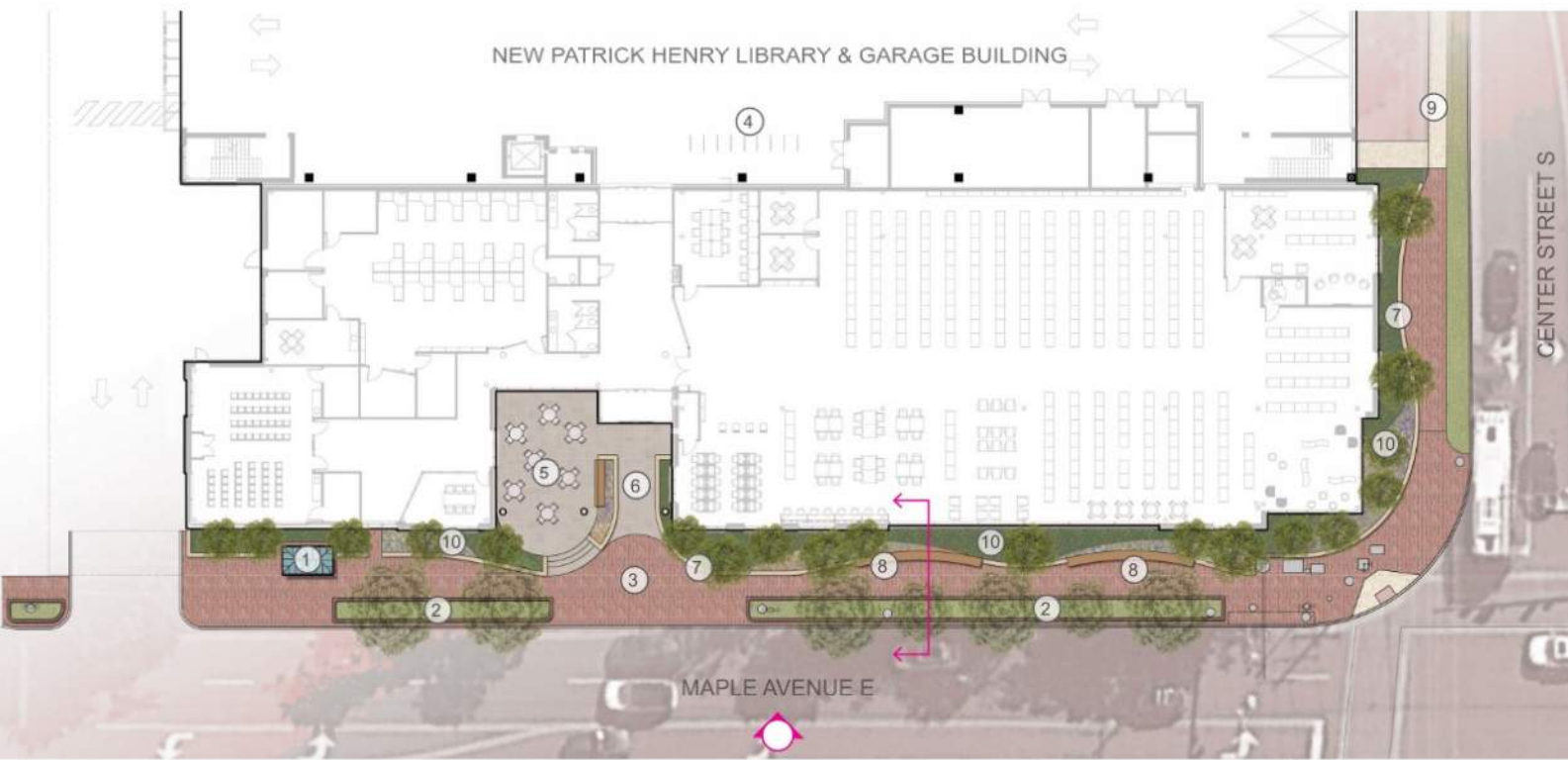


PROPOSED SETBACK PLAN

SCALE: 1" = 50'-0"



ELEVATION



PLAN



SECTION

- KEY**
- ① Existing Bus Shelter to Remain
 - ② Existing Tree Pits to Remain
 - ③ Town Standard Brick Sidewalk Replace and Extend Where Required
 - ④ Bike Racks (Provided in Garage)
 - ⑤ Plaza with Tables & Chairs
 - ⑥ Accessible Front Entrance
 - ⑦ Low Planter Wall
 - ⑧ Seats on Top of Wall
 - ⑨ Concrete Sidewalk
 - ⑩ Planting Area Small Ornamental Trees, Shrubs & Perennials

Streetscape – Option 1



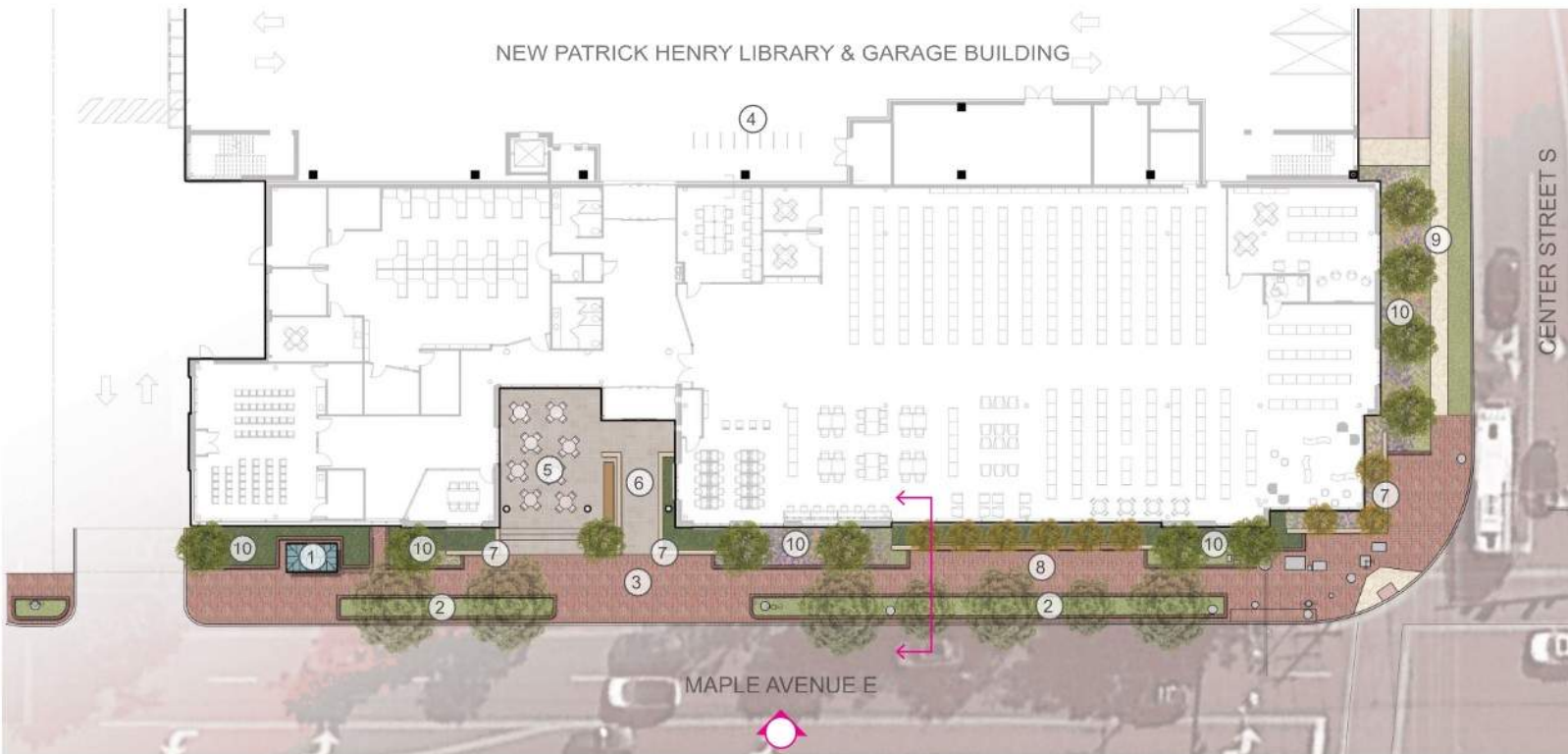
ELEVATION



SECTION

KEY

- ① Existing Bus Shelter to Remain
- ② Existing Tree Pits to Remain
- ③ Town Standard Brick Sidewalk Replace and Extend Where Required
- ④ Bike Racks (Provided in Garage)
- ⑤ Plaza with Tables & Chairs
- ⑥ Accessible Front Entrance
- ⑦ Low Planter Wall
- ⑧ Seats on Top of Wall
- ⑨ Concrete Sidewalk
- ⑩ Planting Area Small Ornamental Trees, Shrubs & Perennials



PLAN

Streetscape – Option 2