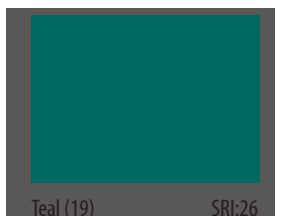
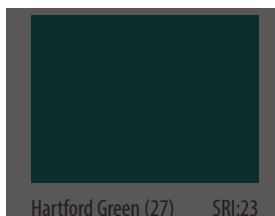
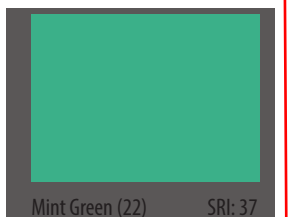
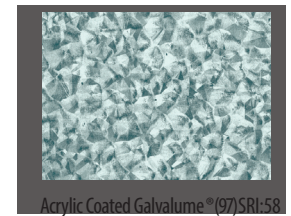
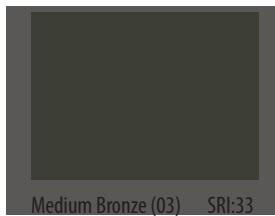
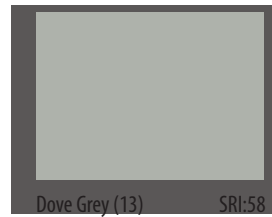
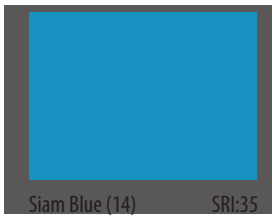
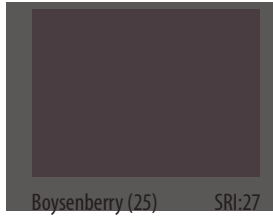
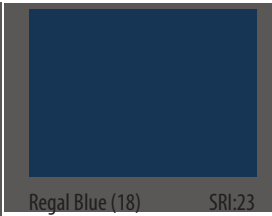
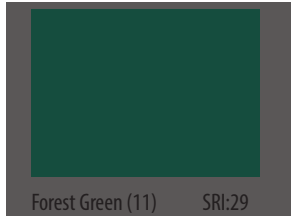


Distributed by: BEST MATERIALS ®  
Ph: 800-474-7570, 602-272-8128 Fax: 602-272-8014  
www.BestMaterials.com Email: Sales@BestMaterials.com



Premium Finish

Premium Finish

Premium Finish

Premium Finish

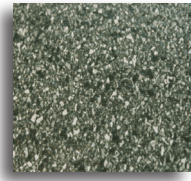
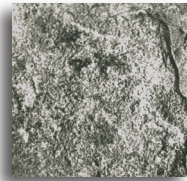
Premium Finish

Premium Finish



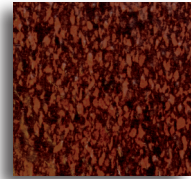
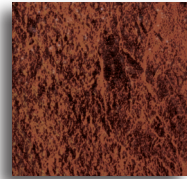
**Advanta® Americana Classic Series\***

**Granutile™ Colors\***



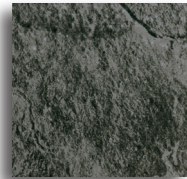
Asheland Slate (AS)  
SRI: 48

Beech Tree (BT)  
SRI: 40



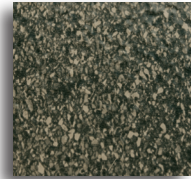
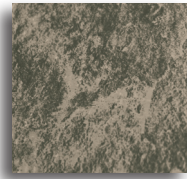
Baja Slate (BS)  
SRI: 25

Deep Granite (DG)  
SRI: 22



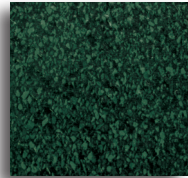
Quarry Slate (QS)  
SRI: 31

Rocky Cliff (RC)  
SRI: 27



Willow Slate (WS)  
SRI: 29

Weathered Stone (WN)  
SRI: 25



Shaded Spruce (SS)  
SRI: 22



Granite (63)



Midnight Blue (65)



Mahogany (61)



Forest Green (11)



Timberwood (33)



Slate (38)



Terra Cotta (32)



Weathered Wood (34)



Mission Red (08)



Charcoal (62)

**Your Single Source for Metal Roofing, Wall Panels, Ceilings, and Accessories**

ATAS International, Inc. offers energy efficient building envelope technology products that are coated with cool pigment paint that reflects infrared radiation, thus allowing the color to appear the same but keeping the material cooler. ATAS products may contribute to LEED® credits, be rated by the CCRC® and/or be ENERGY STAR® qualified. Please visit [www.atas.com](http://www.atas.com) for more information.

The KYNAR 500® PVDF or HYLAR 5000® PVDF finish carries a limited warranty against fading and chalking. ATAS coated materials are non-staining and virtually maintenance free. Any surface residue is easily removed with conventional cleaning solutions or detergents. Minor scratches may be touched up with an air dry touch-up coating of the same color, available from ATAS. Visit [www.atas.com](http://www.atas.com) for specialty trend colors.

Color Number (refer to number on front) • = Available Material and Thickness + = Available with minimum quantities	Steel Gauge			Aluminum					Initial Solar Reflectance	Initial Thermal Emittance	Solar Reflectance Index
	29	24	22	.032	.040	.050	.063	.080			
Classic Bronze	01	•	•	•	•	•	•	•	0.09	0.85	2
Black	02	•	+	•	•	•	+	+	0.06	0.85	-2
Medium Bronze	03	•	•	•	•	•	•	+	0.32	0.85	33
Chocolate Brown	04	•	+	•	•	•	+	+	0.27	0.85	25
Concord Cream	05	•	+	•	•	•	+	+	0.65	0.85	78
Sandstone	06	•	•	•	•	•	•	+	0.57	0.85	66
Redwood	07	•	•	+	•	•	•	+	0.21	0.85	18
Mission Red	08	•	•	+	•	•	•	+	0.32	0.87	33
Sierra Tan	09	•	•	+	•	•	•	+	0.35	0.87	37
Ascot White	10	•	+	•	•	•	•	+	0.77	0.88	96
Forest Green	11	•	•	•	•	•	•	+	0.29	0.87	29
Patina Green	12	•	•	+	•	•	•	+	0.43	0.85	47
Dove Grey	13	•	+	•	•	•	•	+	0.51	0.84	58
Siam Blue	14	•	+	•	•	•	•	+	0.34	0.85	35
Rawhide	15	•	+	•	•	•	•	+	0.55	0.85	64
Rocky Grey	16	•	•	+	•	•	•	+	0.28	0.88	29
Brite Red	17	•	•	+	•	•	•	+	0.51	0.85	58
Regal Blue	18	•	+	•	•	•	•	+	0.25	0.84	23
Teal	19	•	+	•	•	•	•	+	0.26	0.88	26
Slate Grey	20	•	•	•	•	•	•	+	0.36	0.87	39
Slate Blue	21	•	•	+	•	•	•	+	0.31	0.86	31
Mint Green	22	•	•	+	•	•	•	+	0.35	0.86	37
Boysenberry	25	•	•	+	•	•	•	+	0.28	0.85	27
Bone White	26	•	•	•	•	•	•	•	0.70	0.87	85
Hartford Green	27	•	•	+	•	•	•	+	0.25	0.85	23
Char Brown (not shown)	29	•	•	•	•	•	•	+	0.35	0.89	38
Hemlock Green	30	•	•	+	•	•	•	+	0.30	0.86	30
Acrylic Coated Galvalume®	97	•	•	+	•	•	•	+	0.68	0.14	58
Mill Finish Aluminum (not shown)	99				•	•	•	•	--	--	--
<b>Premium Finish</b>											
Coppertone	23	•	•	+	•	•	•	+	0.50	0.86	57
Antique Patina	24	•	•	+	•	•	•	+	0.26	0.86	25
Silversmith	28	•	•	•	•	•	•	+	0.47	0.81	51
Champagne	31	•	•	+	•	•	•	+	0.55	0.79	62
Clear Anodized	70				•	•	•		0.77	0.70	92
Dark Bronze Anodized	71				•	•	•		0.15	0.77	6

KYNAR 500® PVDF is a registered trademark of Arkema. HYLAR 5000® PDVF is a registered trademark of Solvay Solexis, Inc. Advanta® is a registered trademark of ATAS International, Inc. Granutile™ is a trademark of ATAS International, Inc. Colors are as close to the actual colors as modern printing allows. Exact color chips on request; this is a requirement for all premium colors. If you have requirements or preference for colors or finishes other than shown, contact ATAS. Color availability varies by material, gauge and profile. ATAS is not responsible for colors selected from this chart. ATAS reserves the right to modify, eliminate and/or change its products without prior notification. Contact ATAS for more information.

\* Typical applications for Advanta® Americana Classic Series and Granutile™ are roofs on either commercial or residential buildings. Both are lightweight, and ideal for installation over existing roofs without the need for tear-off and disposal (subject to local codes).