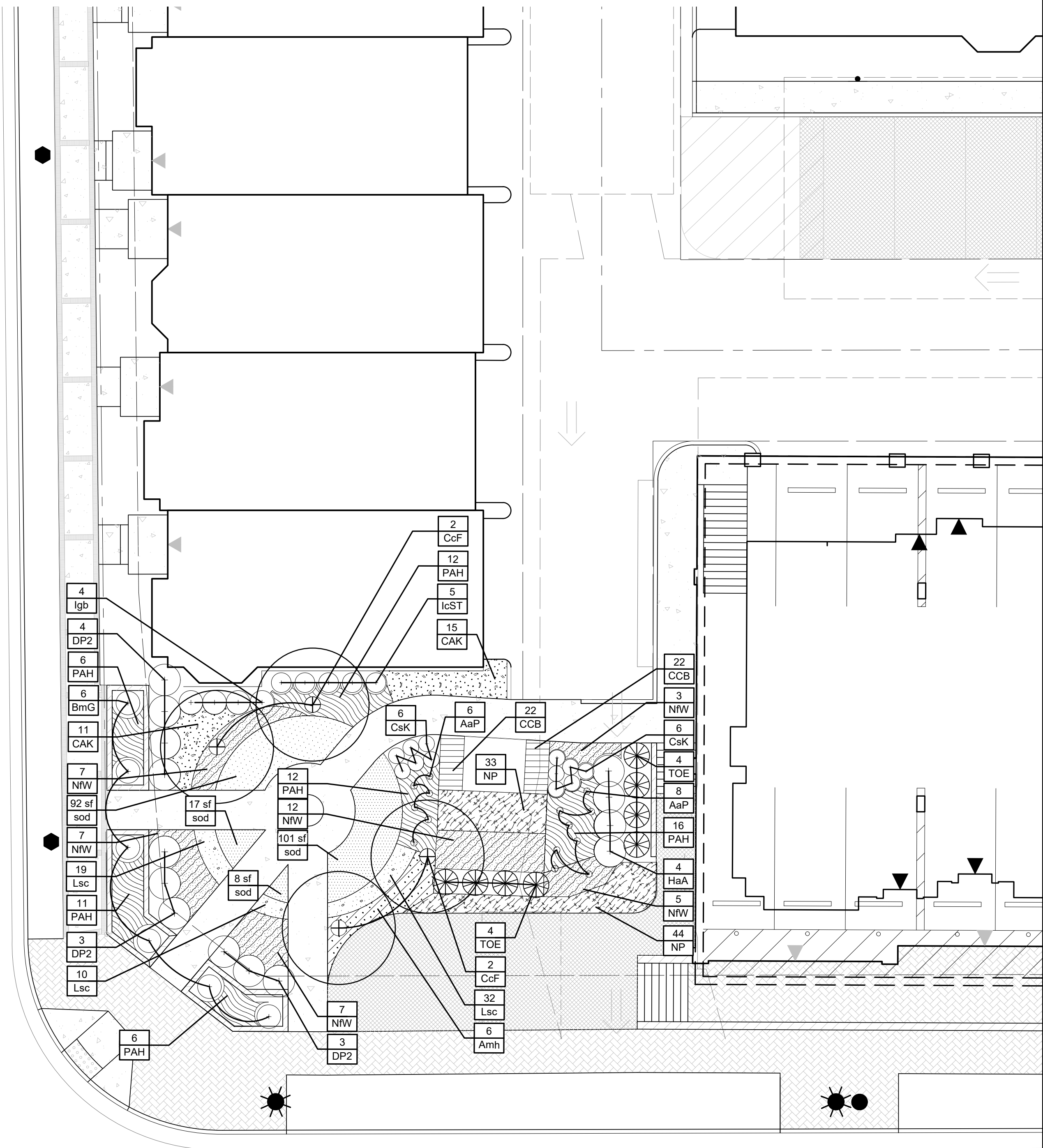
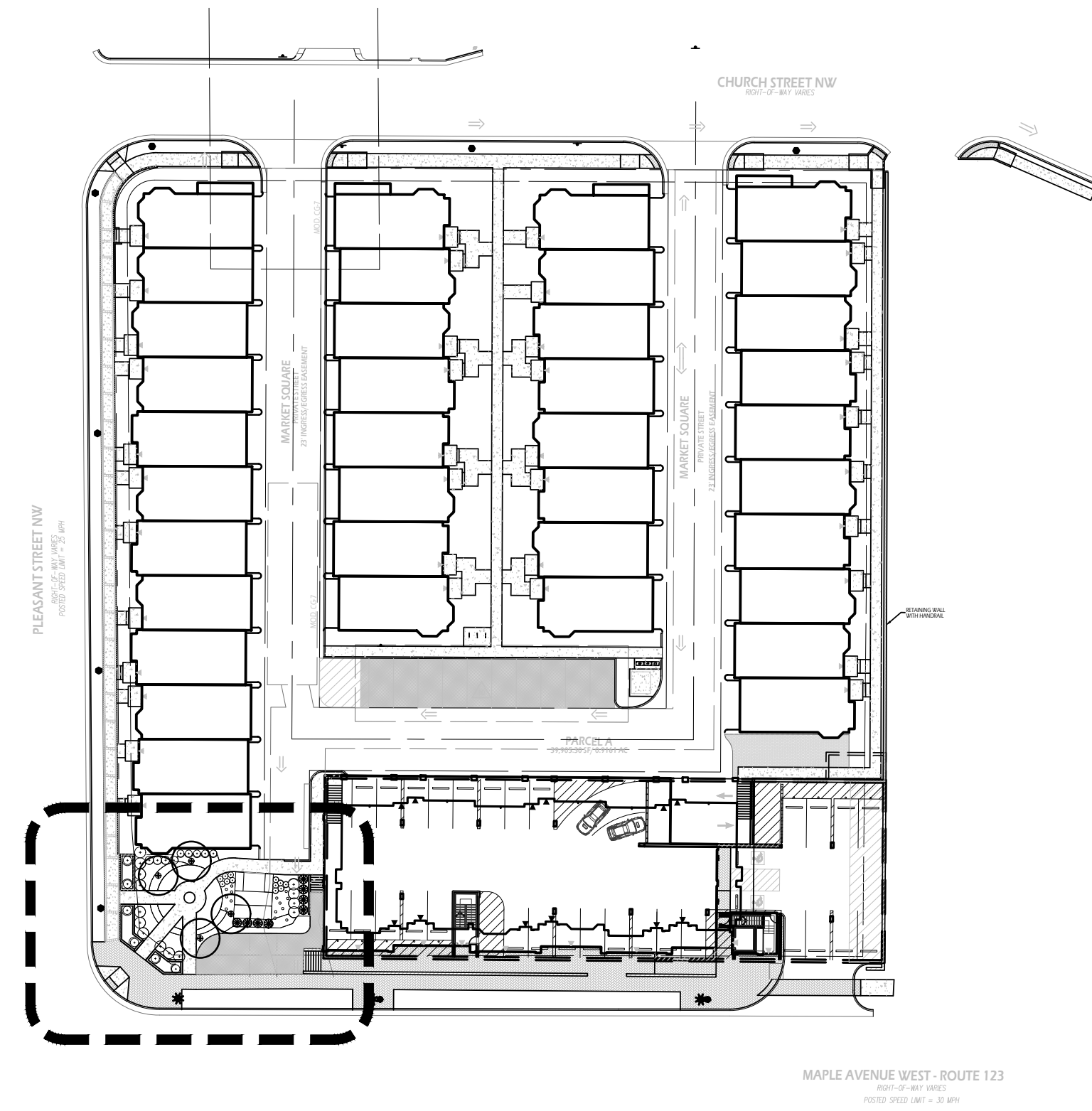


Landscape Architecture, P.C.

6416 Grovedale Drive, Suite 100-A  
Alexandria, Virginia 22310  
Tel: 703.719.6500 Fax: 703.719.6503  
Email: frontdesk@studio39.com

VIENNA MARKET  
VIENNA, VIRGINIA  
NORTHFIELD DEVELOPMENT



| PLANT SCHEDULE CORNER PARK                      |        |   |                                  |          |             |            |   |
|---|--------|---|----------------------------------|----------|-------------|------------|---|
| <b>EVERGREEN TREES</b>                          |        |   |                                  |          |             |            |   |
| TOE   | QTY    | BOTANICAL NAME                                    | COMMON NAME                      | HEIGHT   | CALIPER     | SPREAD     | REMARKS   |
|   | 8      | <i>Thuja occidentalis</i> 'Emerald'               | Emerald Arborvitae               | 6'-8'    |             | 3 1/2 - 5' | B&B, full to ground with good seasonal flush                  |
| <b>ORNAMENTAL TREES</b>                         |        |   |                                  |          |             |            |   |
| CcF   | QTY    | BOTANICAL NAME                                    | COMMON NAME                      | HEIGHT   | CALIPER     | SPREAD     | REMARKS   |
|   | 4      | <i>Cercis canadensis</i> 'Forest Pansy'           | Forest Pansy Redbud              | 8'-10'   | 1 1/2" min. |            | B&B, multi-trunk, 3 trunk minimum, full symmetrical branching |
| <b>SHRUBS</b>                                   |        |   |                                  |          |             |            |   |
| BmG   | QTY    | BOTANICAL NAME                                    | COMMON NAME                      | HEIGHT   | SPREAD      | SIZE       | REMARKS   |
|   | 6      | <i>Buxus microphylla</i> 'Green Mountain'         | Green Mountain Boxwood           | 18"-24"  | 18"-24"     | #3 cont.   | healthy vigorous, well-rooted & established in container      |
| CsK   | QTY    | BOTANICAL NAME                                    | COMMON NAME                      | HEIGHT   | SPREAD      | SIZE       | REMARKS   |
|   | 12     | <i>Cornus sericea</i> 'Kelsey'                    | Kelsey Dogwood                   | 18"-24"  | 18"-24"     | #3 cont.   | full specimen, healthy, vigorous, well-rooted and established |
| DP2   | QTY    | BOTANICAL NAME                                    | COMMON NAME                      | HEIGHT   | SPREAD      | SIZE       | REMARKS   |
|   | 10     | <i>Distylium x PIDIIST-II</i>                     | Blue Cascade Evergreen Distylium | 18"-24"  | 18"-24"     | 3 gal      | full specimen, healthy, vigorous, well-rooted and established |
| HaA   | QTY    | BOTANICAL NAME                                    | COMMON NAME                      | HEIGHT   | SPREAD      | SIZE       | REMARKS   |
|   | 4      | <i>Hydrangea arborescens</i> 'Annabelle'          | Annabelle Smooth Hydrangea       | 18"-24"  | 18"-24"     | #3 cont.   | healthy, vigorous, well-rooted & established in container     |
| IcST  | QTY    | BOTANICAL NAME                                    | COMMON NAME                      | HEIGHT   | SPREAD      | SIZE       | REMARKS   |
|   | 5      | <i>Ilex crenata</i> 'Soft Touch'                  | Soft Touch Japanese Holly        | 2'       | 2'-3'       | #3 cont.   | full specimen, healthy, vigorous, well-rooted and established |
| Igb   | QTY    | BOTANICAL NAME                                    | COMMON NAME                      | HEIGHT   | SPREAD      | SIZE       | REMARKS   |
|   | 4      | <i>Ilex glabra</i> 'Strongbox'                    | Strongbox Inkberry               | 18"-24"  | 18"-24"     | #3 cont.   | healthy, vigorous, well-rooted & established in container     |
| <b>LAWN GRASSES</b>                             |        |   |                                  |          |             |            |   |
| sod   | QTY    | BOTANICAL NAME                                    | COMMON NAME                      | CONT.    | COLOR       | SPACING    | REMARKS   |
|   | 218 sf | Turf Sod  | Drought Tolerant Fescue Blend    | Roll     |             |            |   |
| <b>PERENNIALS, ORNAMENTAL GRASSES AND FERNS</b> |        |   |                                  |          |             |            |   |
| AaP   | QTY    | BOTANICAL NAME                                    | COMMON NAME                      | CONT.    | COLOR       | SPACING    | REMARKS   |
|   | 14     | <i>Allium afatanense</i> 'Purple Sensation'       | Ornamental Onion                 | Bulb     | Purple      | 16" o.c.   | full specimen, healthy, vigorous, well-rooted and established |
| Amh   | QTY    | BOTANICAL NAME                                    | COMMON NAME                      | CONT.    | COLOR       | SPACING    | REMARKS   |
|   | 6      | <i>Amsonia hubrichtii</i>                         | Arkansas Blue-star               | #1 cont. | Blue        | 36" o.c.   | full specimen, healthy, vigorous, well-rooted and established |
| CAK   | QTY    | BOTANICAL NAME                                    | COMMON NAME                      | CONT.    | COLOR       | SPACING    | REMARKS   |
|   | 26     | <i>Calamagrostis x acutiflora</i> 'Karl Foerster' | Feather Reed Grass               | #2 cont. |             | 24" o.c.   | full specimen, healthy, vigorous, well-rooted and established |
| CCB   | QTY    | BOTANICAL NAME                                    | COMMON NAME                      | CONT.    | COLOR       | SPACING    | REMARKS   |
|   | 44     | <i>Coreopsis x 'Creme Brulee'</i>                 | Creme Brulee Tickseed            | #1 cont. | yellow      | 12" o.c.   | full specimen, healthy, vigorous, well-rooted and established |
| Lsc   | QTY    | BOTANICAL NAME                                    | COMMON NAME                      | CONT.    | COLOR       | SPACING    | REMARKS   |
|   | 61     | <i>Liriope spicata</i>                            | Creeping Lily Turf               | 1 qt.    |             | 12" o.c.   | full specimen, healthy, vigorous, well-rooted and established |
| NP  | QTY    | BOTANICAL NAME                                    | COMMON NAME                      | CONT.    | COLOR       | SPACING    | REMARKS   |
|   | 77     | <i>Nassella tenuissima</i> 'Pony Tails'           | Mexican Feathergrass             | #1 cont. |             | 18" o.c.   | full specimen, healthy, vigorous, well-rooted and established |
| NW  | QTY    | BOTANICAL NAME                                    | COMMON NAME                      | CONT.    | COLOR       | SPACING    | REMARKS   |
|   | 41     | <i>Nepeta x faassenii</i> 'Walkers Low'           | Walkers Low Catmint              | #1 cont. | blue        | 30" o.c.   | full specimen, healthy, vigorous, well-rooted and established |
| PAH   | QTY    | BOTANICAL NAME                                    | COMMON NAME                      | CONT.    | COLOR       | SPACING    | REMARKS   |
|   | 63     | <i>Pennisetum alopecuroides</i> 'Hameln'          | Hameln Dwarf Fountain Grass      | #2 cont. |             | 24" o.c.   | full specimen, healthy, vigorous, well-rooted and established |

THIS DOCUMENT AND THE IDEAS AND DESIGN INCORPORATED HEREIN ARE PROPERTY OF PROFESSIONAL SERVICE TO THE PROPERTY OF STUDIO 39 LANDSCAPE ARCHITECTURE, P.C. AND SHALL REMAIN THE PROPERTY OF STUDIO 39 LANDSCAPE ARCHITECTURE, P.C. UNLESS OTHERWISE SPECIFIED BY A WRITTEN AGREEMENT FROM STUDIO 39 LANDSCAPE ARCHITECTURE, P.C.

REVISIONS:

LANDSCAPE PLAN

DESIGN: JB  
DRAWN: JB  
CHECKED: DD

SCALE: 1" = 10' - 0"

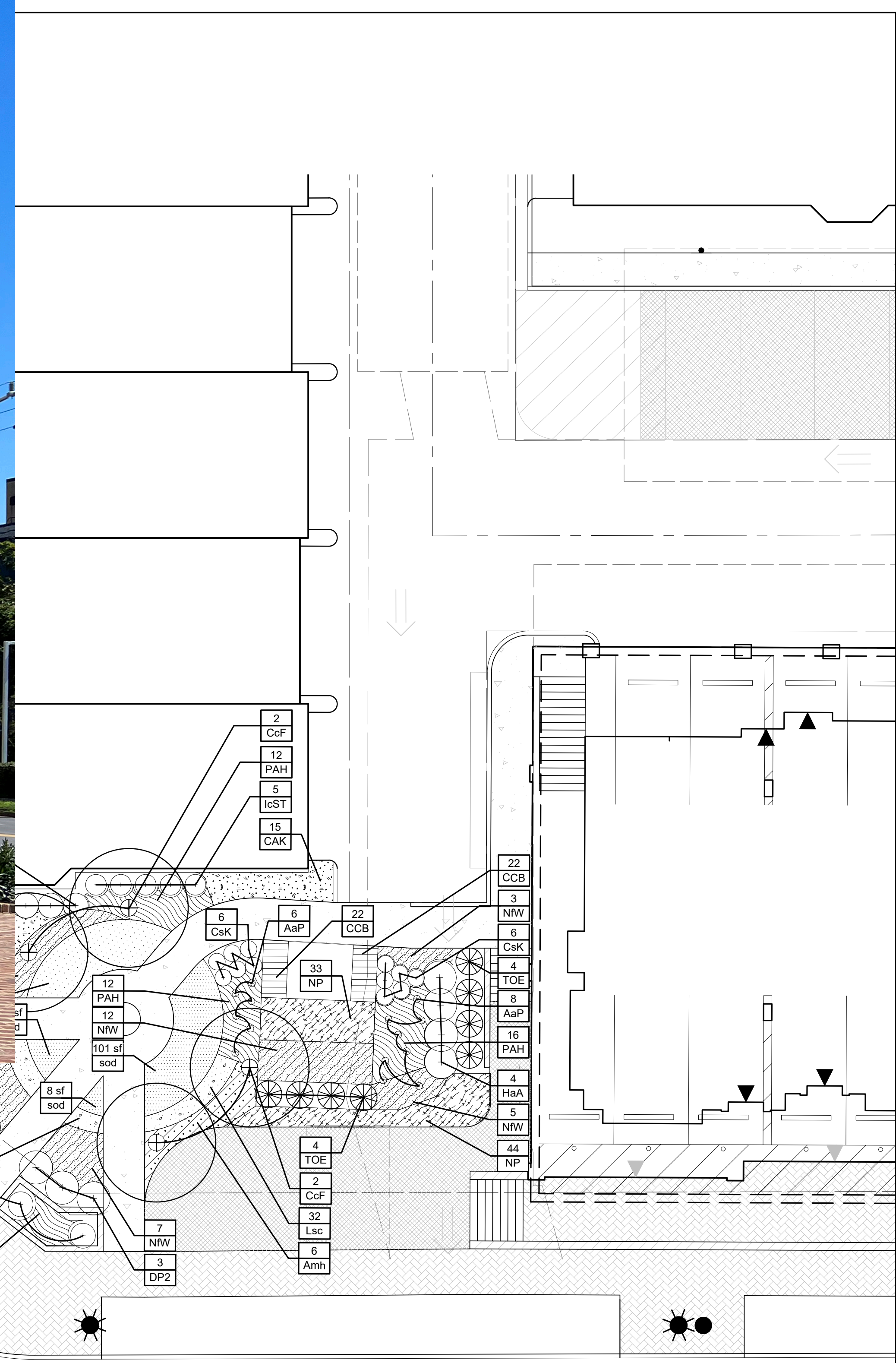
PROJECT NO: 19014  
DATE: 11.24.2021

L6.01

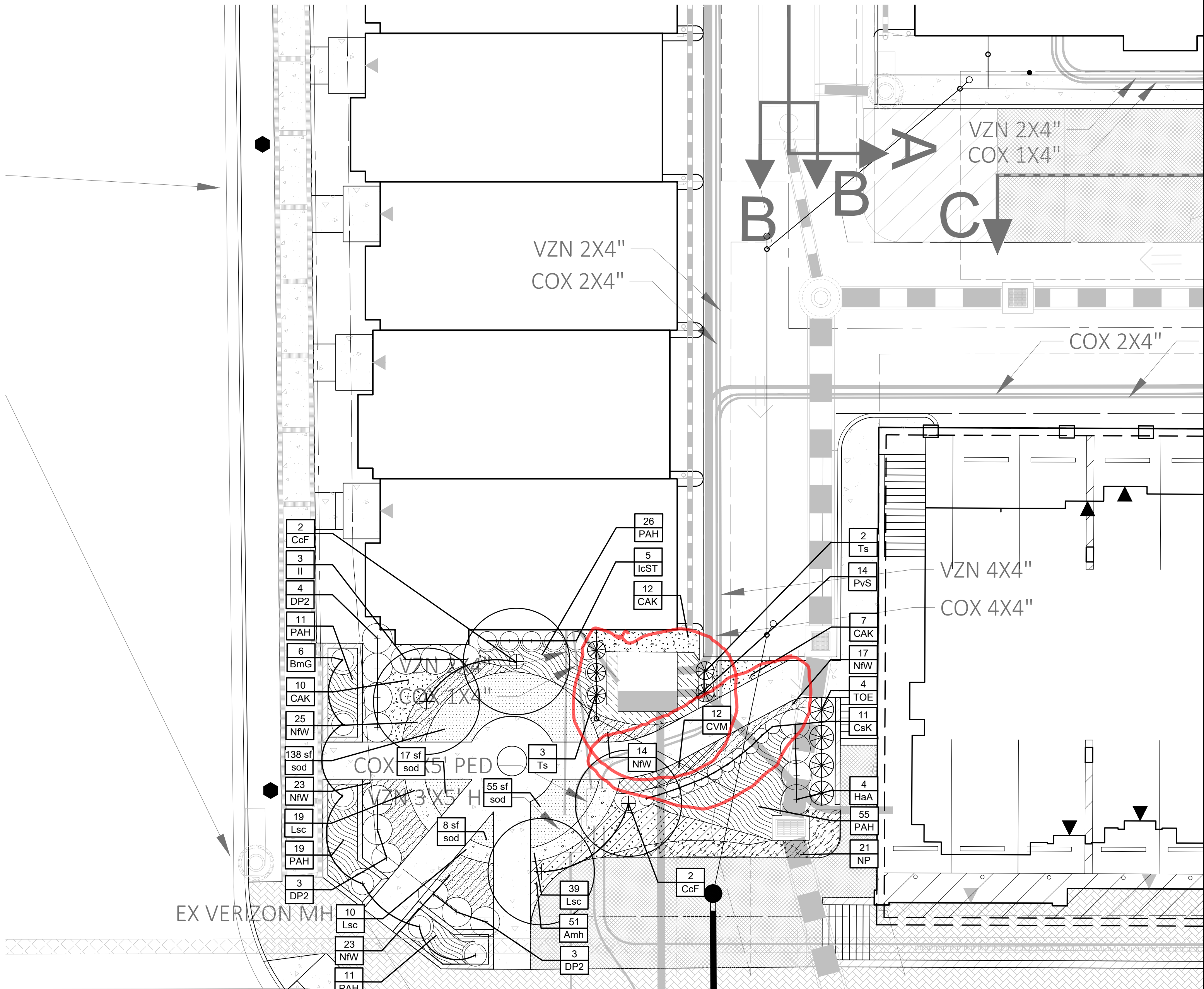
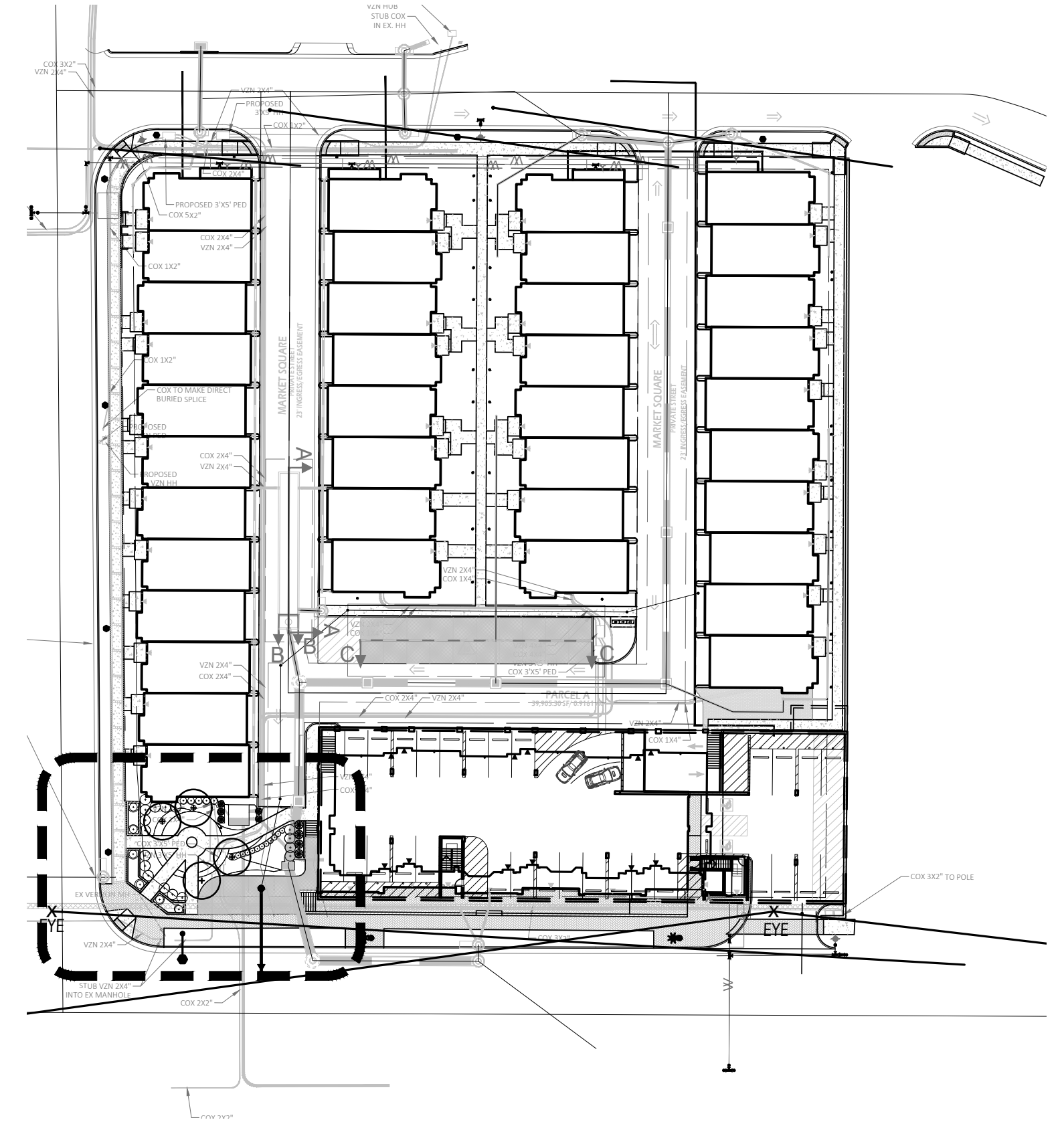
CD

P:\2019\19014 Vienna Market\6.0 CAD Files\CURRENT PHASE\L6.01 LANDSCAPE PLAN.dwg

NOT RELEASED FOR CONSTRUCTION



| SHRUBS                                   | QTY    | BOTANICAL NAME                             | COMMON NAME                      | HEIGHT   | SPREAD  | SIZE     | REMARKS   |
|--|--------|--|----------------------------------|----------|---------|----------|---|
| BmG                                      | 6      | Buxus microphylla 'Green Mountain'         | Green Mountain Boxwood           | 18"-24"  | 18"-24" | #3 cont. | healthy vigorous, well-rooted & established in container      |
| CsK                                      | 12     | Cornus sericea 'Kelsey'                    | Kelsey Dogwood                   | 18"-24"  | 18"-24" | #3 cont. | full specimen, healthy, vigorous, well-rooted and established |
| DP2                                      | 10     | Distylium x PIDIST-II                      | Blue Cascade Evergreen Distylium | 18"-24"  | 18"-24" | 3 gal    | full specimen, healthy, vigorous, well-rooted and established |
| HaA                                      | 4      | Hydrangea arborescens 'Annabelle'          | Annabelle Smooth Hydrangea       | 18"-24"  | 18"-24" | #3 cont. | healthy, vigorous, well-rooted & established in container     |
| IcST                                     | 5      | Ilex crenata 'Soft Touch'                  | Soft Touch Japanese Holly        | 2'       | 2'-3'   | #3 cont. | full specimen, healthy, vigorous, well-rooted and established |
| Igb                                      | 4      | Ilex glabra 'Strongbox'                    | Strongbox Inkberry               | 18"-24"  | 18"-24" | #3 cont. | healthy, vigorous, well-rooted & established in container     |
| LAWN GRASSES                             | QTY    | BOTANICAL NAME                             | COMMON NAME                      | CONT.    | COLOR   | SPACING  | REMARKS   |
| sod                                      | 218 sf | Turf Sod                                   | Drought Tolerant Fescue Blend    | Roll     |         |          |   |
| PERENNIALS, ORNAMENTAL GRASSES AND FERNS | QTY    | BOTANICAL NAME                             | COMMON NAME                      | CONT.    | COLOR   | SPACING  | REMARKS   |
| AaP                                      | 14     | Allium afatanense 'Purple Sensation'       | Ornamental Onion                 | Bulb     | Purple  | 16" o.c. | full specimen, healthy, vigorous, well-rooted and established |
| Amh                                      | 6      | Amsonia hubrichtii                         | Arkansas Blue-star               | #1 cont. | Blue    | 36" o.c. | full specimen, healthy, vigorous, well-rooted and established |
| CAK                                      | 26     | Calamagrostis x acutiflora 'Karl Foerster' | Feather Reed Grass               | #2 cont. |         | 24" o.c. | full specimen, healthy, vigorous, well-rooted and established |
| CCB                                      | 44     | Coreopsis x 'Creme Brulee'                 | Creme Brulee Tickseed            | #1 cont. | yellow  | 12" o.c. | full specimen, healthy, vigorous, well-rooted and established |
| Lsc                                      | 61     | Liriope spicata                            | Creeping Lily Turf               | 1 qt.    |         | 12" o.c. | full specimen, healthy, vigorous, well-rooted and established |
| NP                                       | 77     | Nassella tenuissima 'Pony Tails'           | Mexican Feathergrass             | #1 cont. |         | 18" o.c. | full specimen, healthy, vigorous, well-rooted and established |
| NW                                       | 41     | Nepeta x faassenii 'Walkers Low'           | Walkers Low Catmint              | #1 cont. | blue    | 30" o.c. | full specimen, healthy, vigorous, well-rooted and established |
| PAH                                      | 63     | Pennisetum alopecuroides 'Hamel'           | Hamel Dwarf Fountain Grass       | #2 cont. |         | 24" o.c. | full specimen, healthy, vigorous, well-rooted and established |



| PLANT SCHEDULE CORNER PARK               |        |  |                                  |          |             |            |   |   |
|--|--------|--|----------------------------------|----------|-------------|------------|---|---|
| TREES                                    | QTY    | BOTANICAL NAME                             | COMMON NAME                      | HEIGHT   | CALIPER     | SPREAD     | REMARKS   |   |
| Ts                                       | 5      | Thuja occidentalis 'Smaragd'               | Emerald Green Arborvitae         | 6'-8'    |             | 3'-4'      | full specimen, healthy, vigorous, well-rooted and established |   |
| EVERGREEN TREES                          | QTY    | BOTANICAL NAME                             | COMMON NAME                      | HEIGHT   | CALIPER     | SPREAD     | REMARKS   |   |
| TOE                                      | 4      | Thuja occidentalis 'Emerald'               | Emerald Arborvitae               | 6'-8'    |             | 3 1/2 - 5' | B&B, full to ground with good seasonal flush                  |   |
| ORNAMENTAL TREES                         | QTY    | BOTANICAL NAME                             | COMMON NAME                      | HEIGHT   | CALIPER     | SPREAD     | REMARKS   |   |
| CcF                                      | 4      | Cercis canadensis 'Forest Pansy'           | Forest Pansy Redbud              | 8'-10'   | 1 1/2" min. |            | B&B, multi-trunk, 3 trunk minimum, full symmetrical branching |   |
| SHRUBS                                   | QTY    | BOTANICAL NAME                             | COMMON NAME                      | HEIGHT   | SPREAD      | SIZE       | SPACING   | REMARKS   |
| BmG                                      | 6      | Buxus microphylla 'Green Mountain'         | Green Mountain Boxwood           | 18"-24"  | 18"-24"     | #3 cont.   | 3' o.c.   | healthy vigorous, well-rooted & established in container      |
| CsK                                      | 11     | Cornus sericea 'Kelsey'                    | Kelsey Dogwood                   | 18"-24"  | 18"-24"     | #3 cont.   | 2' o.c.   | full specimen, healthy, vigorous, well-rooted and established |
| DP2                                      | 10     | Distylium x PIIDIST-II                     | Blue Cascade Evergreen Distylium | 18"-24"  | 18"-24"     | 3 gal      | 4' o.c.   | full specimen, healthy, vigorous, well-rooted and established |
| HaA                                      | 4      | Hydrangea arborescens 'Annabelle'          | Annabelle Smooth Hydrangea       | 18"-24"  | 18"-24"     | #3 cont.   | 4' o.c.   | healthy, vigorous, well-rooted & established in container     |
| IcST                                     | 5      | Ilex crenata 'Soft Touch'                  | Soft Touch Japanese Holly        | 2'       | 2'-3'       | #3 cont.   | 2.5' o.c.   | full specimen, healthy, vigorous, well-rooted and established |
| II                                       | 3      | Ilex glabra 'Compacta'                     | Compact Inkberry                 | 36 - 48" | 48"-72"     | #3 cont.   | 3' o.c.   | full specimen, healthy, vigorous, well-rooted and established |
| LAWN GRASSES                             | QTY    | BOTANICAL NAME                             | COMMON NAME                      | CONT.    | COLOR       | SPACING    | REMARKS   |   |
| sod                                      | 218 sf | Turf Sod                                   | Drought Tolerant Fescue Blend    | Roll     |             |            |   |   |
| PERENNIALS, ORNAMENTAL GRASSES AND FERNS | QTY    | BOTANICAL NAME                             | COMMON NAME                      | CONT.    | COLOR       | SPACING    | REMARKS   |   |
| Amh                                      | 51     | Amsonia hubrichtii                         | Arkansas Blue-star               | #1 cont. | Blue        | 24" o.c.   | full specimen, healthy, vigorous, well-rooted and established |   |
| CAK                                      | 29     | Calamagrostis x acutiflora 'Karl Foerster' | Feather Reed Grass               | #2 cont. |             | 24" o.c.   | full specimen, healthy, vigorous, well-rooted and established |   |
| CVM                                      | 12     | Coreopsis verticillata 'Moonbeam'          | Threadleaf Coreopsis             | #1 cont. | pale yellow | 18" o.c.   | full specimen, healthy, vigorous, well-rooted and established |   |
| Lsc                                      | 68     | Liriope spicata                            | Creeping Lily Turf               | 1 qt.    |             | 12" o.c.   | full specimen, healthy, vigorous, well-rooted and established |   |
| NP                                       | 21     | Nassella tenuissima 'Pony Tails'           | Mexican Feathergrass             | #1 cont. |             | 24" o.c.   | full specimen, healthy, vigorous, well-rooted and established |   |
| NW                                       | 102    | Nepeta x faassenii 'Walkers Low'           | Walkers Low Catmint              | #1 cont. | blue        | 16" o.c.   | full specimen, healthy, vigorous, well-rooted and established |   |
| PvS                                      | 14     | Panicum virgatum 'Shenendoah'              | Burgundy Switch Grass            | #3 cont. |             | 24" o.c.   | full specimen, healthy, vigorous, well-rooted and established |   |
| PAH                                      | 122    | Pennisetum alopecuroides 'Hamel'           | Hamel Dwarf Fountain Grass       | #2 cont. |             | 18" o.c.   | full specimen, healthy, vigorous, well-rooted and established |   |



1. Changed location and size of transformer
2. Adjusted sidewalk
3. Eliminated planter boxes to promote continuity

REVISIONS:

CORNER PARK LANDSCAPE PLAN

DESIGN: JB  
 DRAWN: JB  
 CHECKED: DD

SCALE: 1" = 10' - 0"

PROJECT NO: 19014

DATE: 07.23.19

L6.01

CD