

TREES



Canadian Serviceberry  
*Amelanchier canadensis*  
15-25' tree

River Birch  
*Betula nigra*  
40-70' tree

Sycamore  
*Platanus occidentalis*  
75-100' tree

Bald Cypress  
*Taxodium distichum*  
50-70' tree

SHRUBS



Smooth Alder  
*Alnus serrulata*  
10-20' shrub

Red Chokeberry  
*Aronia arbutifolia*  
6-12' shrub

Silky Dogwood  
*Cornus amomum*  
6-12' shrub

Elderberry  
*Sambucus canadensis*  
6-12' shrub

Arrowwood  
*Viburnum dentatum*  
6-12' shrub

Sweet Pepperbush  
*Clethra alnifolia*  
3-6' shrub



American Witchhazel  
*Hamamelis virginiana*  
15-20' shrub

Spicebush  
*Lindera benzoin*  
6-12' shrub

Gro-Low Sumac  
*Rhus aromatica 'Gro-Low'*  
2-4' shrub

Blackhaw  
*Viburnum prunifolium*  
12-15' shrub

PERENNIALS



Common Boneset  
*Eupatorium perfoliatum*  
3-5' perennial

Coastal Joe-Pye Weed  
*Eutrochium dubium*  
3-5' perennial

Joe-Pye Weed  
*Eutrochium fistulosum*  
5-7' perennial

Spotted Joe Pye Weed  
*Eutrochium maculatum*  
5-7' perennial

Marsh Hibiscus  
*Hibiscus moscheutos*  
3-7' perennial

Blazing Star  
*Liatris spicata*  
2-4' perennial



Cardinal Flower  
*Lobelia cardinalis*  
2-4' perennial

Blue Lobelia  
*Lobelia siphilitica*  
2-4' perennial

Arrow Arum  
*Peltandra virginica*  
2-4' perennial

Pickerelweed  
*Pontederia cordata*  
2-4' perennial

Black-eyed Susan  
*Rudbeckia fulgida*  
2-4' perennial

Broadleaf Arrowhead  
*Sagittaria latifolia*  
2-4' perennial

Rough Goldenrod  
*Solidago rugosa*  
3-5' perennial

New England Aster  
*Symphyotrichum novae-angliae*  
3-6' perennial

Purple-Stemmed Aster  
*Symphyotrichum puniceum*  
2-7' perennial

Blue Vervain  
*Verbena hastata*  
2-6' perennial

New York Ironweed  
*Vernonia noveboracensis*  
5-7' perennial



Swamp Milkweed  
*Asclepias incarnata*  
3-5' perennial

Butterfly Weed  
*Asclepias tuberosa*  
1-2' perennial

Blue Mistflower  
*Conoclinium coelestinum*  
1-2' perennial

Sweet Joe-Pye Weed  
*Eupatorium purpureum*  
4-7' perennial

Blue Flag  
*Iris versicolor*  
2-3' perennial

Bee Balm  
*Monarda didyma*  
2-4' perennial

Cutleaf Coneflower  
*Rudbeckia laciniata*  
3-4' perennial

GRASSES / SEDGES



Broomsedge  
*Andropogon virginicus*  
2-4' grass/sedge

Bristly Sedge  
*Carex comosa*  
2-4' grass/sedge

Shallow Sedge  
*Carex lurida*  
1-3' grass/sedge

Fox Sedge  
*Carex vulpinoidea*  
1-3' grass/sedge

Fall Panic Grass  
*Panicum dichotomiflorum*  
1-6' grass/sedge

Switchgrass  
*Panicum virgatum*  
2-5' grass/sedge

Softstem Bulrush  
*Schoenoplectus tabernaemontani*  
4-8' grass/sedge

Green Bulrush  
*Scirpus atrovirens*  
3-5' grass/sedge

Eastern Gamagrass  
*Tripsacum dactyloides*  
3-6' grass/sedge

Pennsylvania Sedge  
*Carex pensylvanica*  
1-2' grass/sedge

Soft Rush  
*Juncus effusus*  
2-4' grass/sedge

## Wetland Site



Boardwalk case study:  
Wickham Park  
The Wetlands Garden

Boardwalk case study:  
State Botanical Garden of Tennessee  
The Wetlands Garden

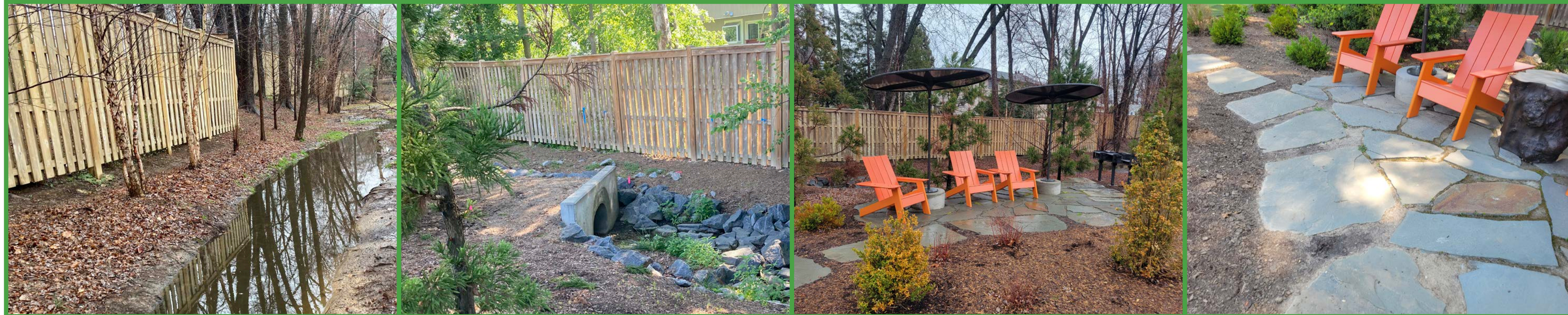
Boardwalk example  
<30" above ground = no railing

Site feature:  
Stacked boulder wall

Site feature:  
Rock sill grade control

Site feature:  
Imbricated boulder pool

Site feature:  
Woody debris habitat feature



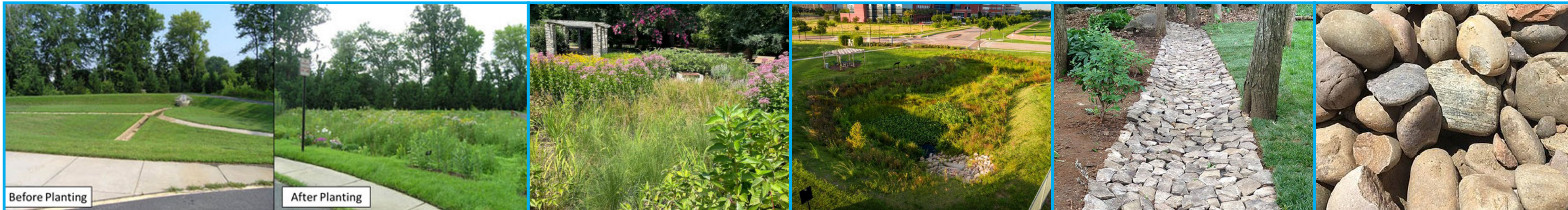
Boardwalk wood material  
Color to match existing NFCU fence

Boardwalk wood material  
Color to match existing NFCU fence

Flagstone  
to match existing NFCU flagstone

Flagstone  
to match existing NFCU flagstone

## Stormwater Basin Site



Planting approach example  
Case study: Fairfax county  
Dry pond retrofit

Planting approach example  
Case study: Raleigh Rose Garden  
Stormwater improvements

Planting approach example  
Moisture tolerant herbaceous plantings in  
central planting area

Site feature:  
Cobble-lined low flow swale

Site feature:  
Cobble-lined low flow swale

## Wetland Site



## Stormwater Basin Site

