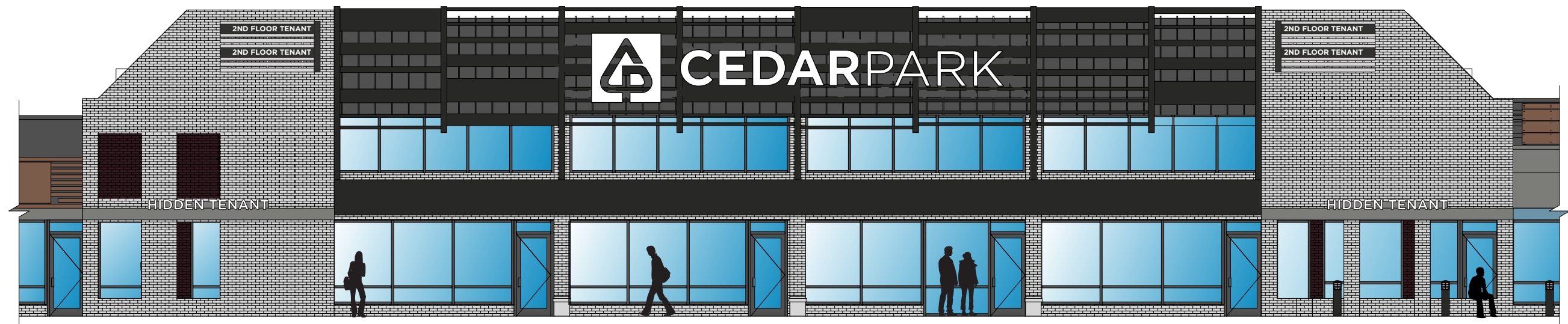


Cedar Park Shopping Center - Master Sign Package

Town of Vienna Board of Architectural Review

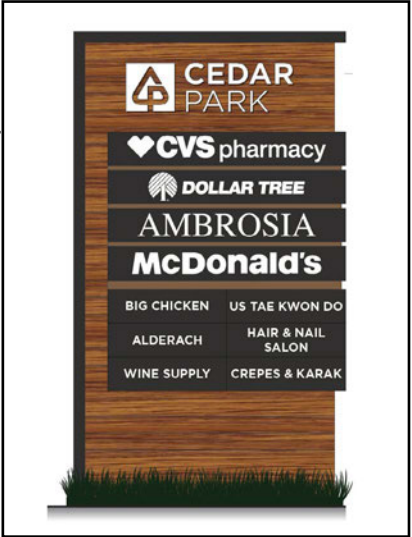
March 21, 2019



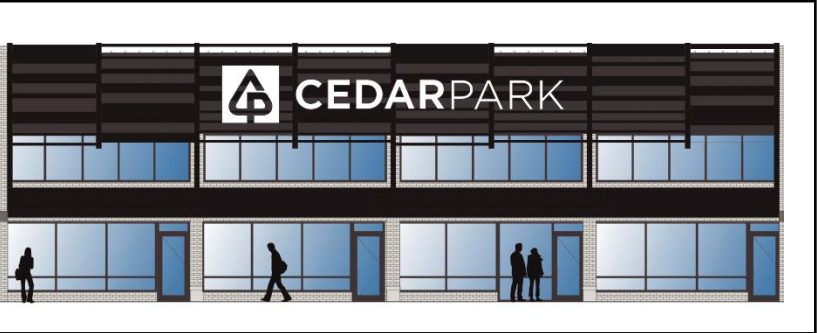
Side Brand ID Sign



Welcome / Thank You *



Main Pylon Sign

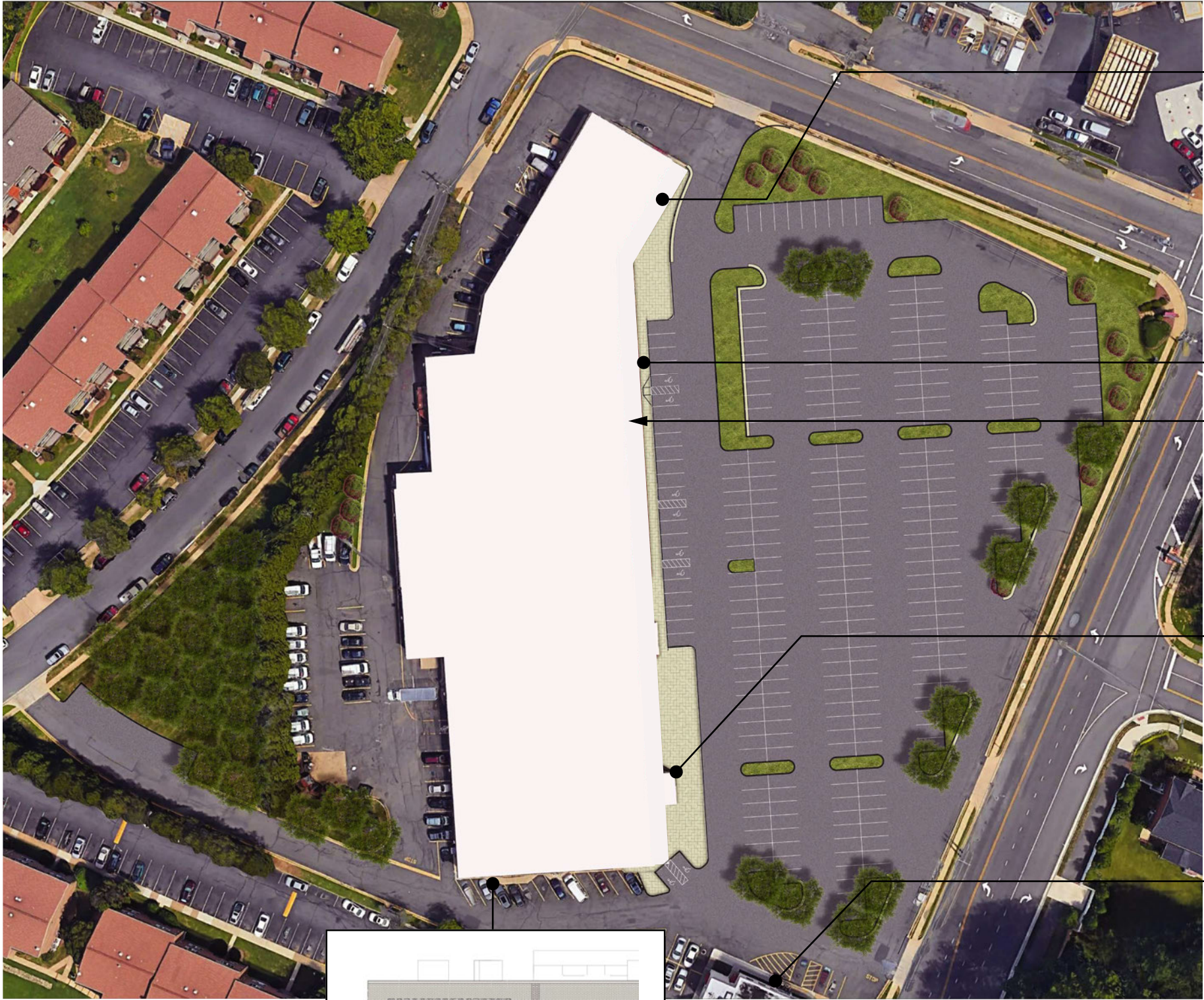


Main Brand ID Sign



Welcome / Thank You *

NOTE *
Final Qty. and locations of
Welcome / Thank You
signs to be determined



In-Line Tenants / End Anchor ID



Junior Anchor ID



Tenant Under Canopy ID

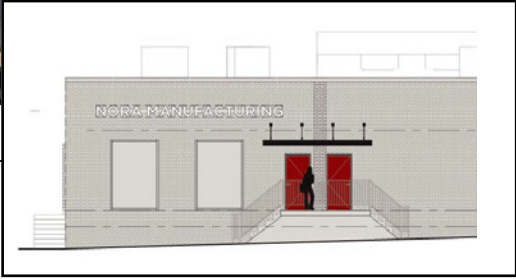


Hidden Tenant / 2nd Floor Tenant ID



Pad Tenant ID

A Site / Sign Location Plan
NTS

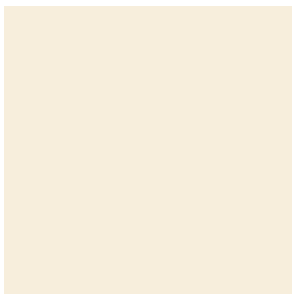


End Tenant ID

Color & Finishes



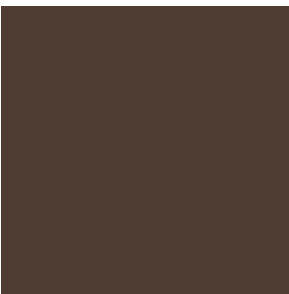
P1
Decription: Caviar
Paint: Matthews Acrylic
Color: Match SW 6990 Caviar



P2
Decription: Honied White
Paint: Matthews Acrylic
Color: Match SW 7106 Honied White



P3
Decription: Passive
Paint: Matthews Acrylic
Color: Match SW 7064 Passive



P4
Decription: Turkish Coffee
Paint: Matthews Acrylic
Color: Match SW 6076 Turkish Coffee



P5
Decription: Jute Brown
Paint: Matthews Acrylic
Color: Match SW 6096 Jute Brown



P6
Decription: Distance
Paint: Matthews Acrylic
Color: Match SW 6243 Distance



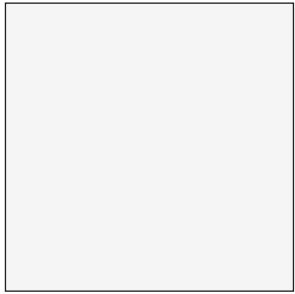
P7
Decription: Cavern Clay
Paint: Matthews Acrylic
Color: Match SW 7701 Cavern Clay



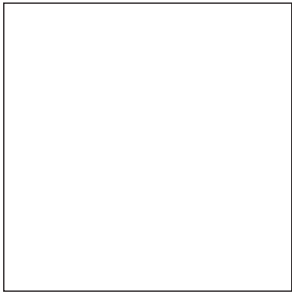
P8
Decription: FWR Primary Bright Blue
Paint: Matthews Acrylic
Color: Match Pantone #2727C



P9
Decription: FWR Primary Dark Navy
Paint: Matthews Acrylic
Color: Match Pantone #296C



V1
Decription: Reflective White
Manufacturer: 3M #681-10
Color: White Reflective



L1
Decription: White Translucent
Manufacturer: Plaskolite Optix-LD MAX
Color: White #2406



WD1
Decription: Hickory
Manufacturer: Knotwood Extruded Alum.
Color: Hickory

Typeface

ABCDEFGHIJKLMNOPQRSTUVWXYZ
abcdefghijklmnopqrstuvwxyz
1234567890

T1

Gotham Bold (+5 Tracking)

ABCDEFGHIJKLMNOPQRSTUVWXYZ
abcdefghijklmnopqrstuvwxyz
1234567890

T2

Gotham Book (+5 Tracking)

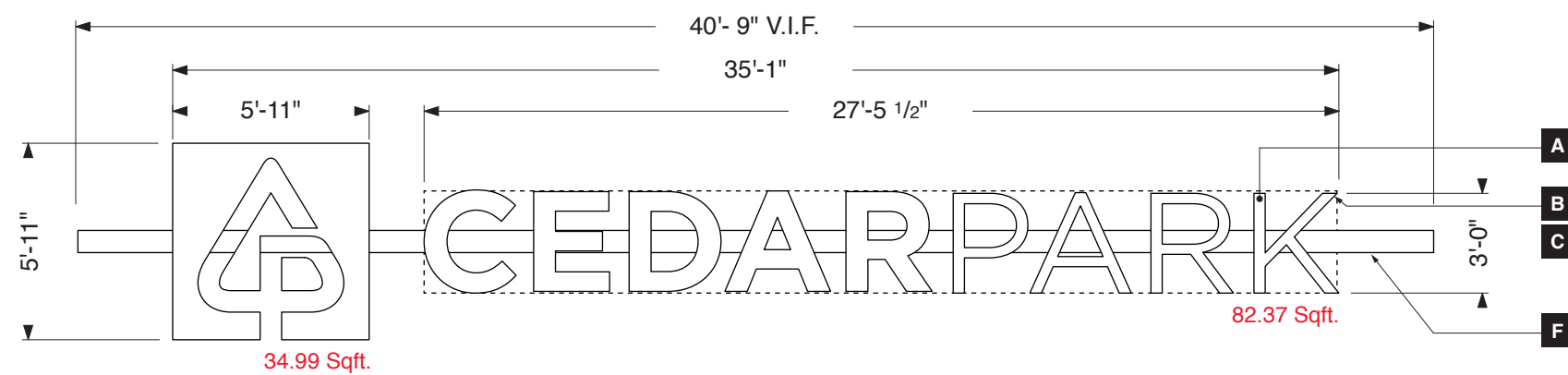
Artwork



Linear Logo - Vector Artwork by Bricks and Sticks



Stacked Logo - Vector Artwork by Bricks and Sticks

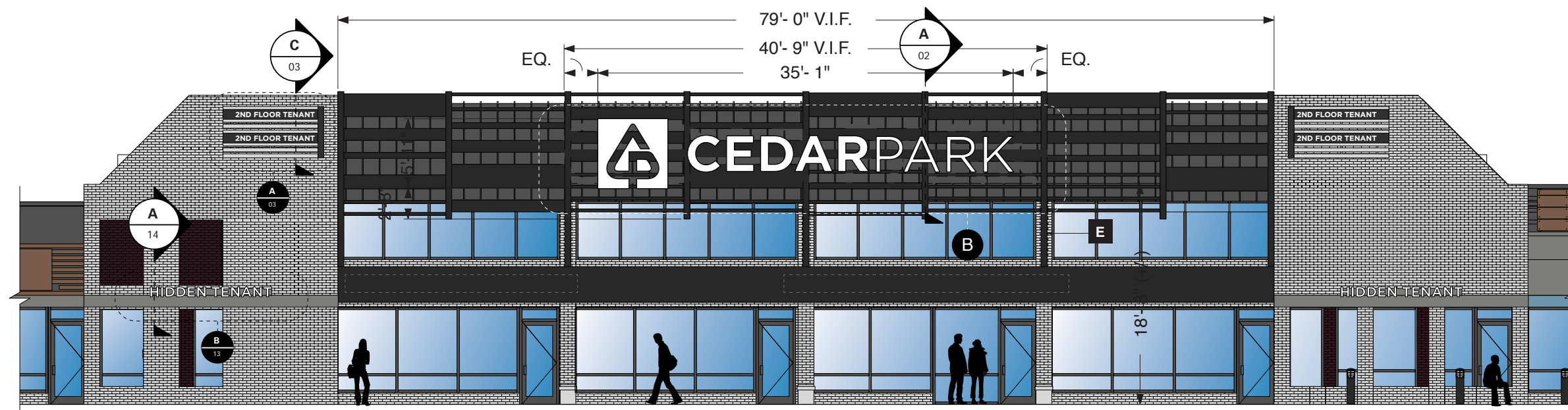


B Sign Detail Elevation
3/16" = 1'-0"

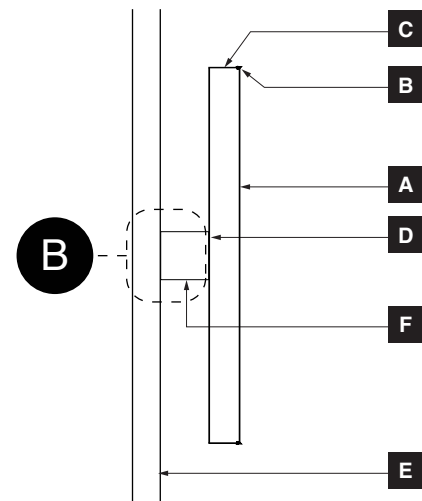
Sign Sqft: 117.36 Sqft.
Kelvin Level: 4000k (Cool White)

- A** Fabricated Letter - Acrylic Letter Face
3/16" #2406 Translucent White Acrylic
- B** Fabricated Letter - Trimcap
1" Jewelite Trimcap w/ Self-Tapping S.S. Pan Head
Screw(s) Epoxy bond to Acrylic Letter Face
- C** Fabricated Letter - Can
5" D .090" Bent Aluminum Return
w/ 1/8" Thk. ACM Letter Back
- D** Fabricated Letter - Illumination
L.E.D. Illumination - Product Per Manufacturer Spec.
4000k "Cool White" Temperature
- E** Storefront Vertical Framework
Aluminum tube framework
V.I.F. Size + Construction
- F** Raceway
4" x 7" (+/-) Extruded Aluminum Raceway
Mechanically fastened to Storefront Vertical Framework

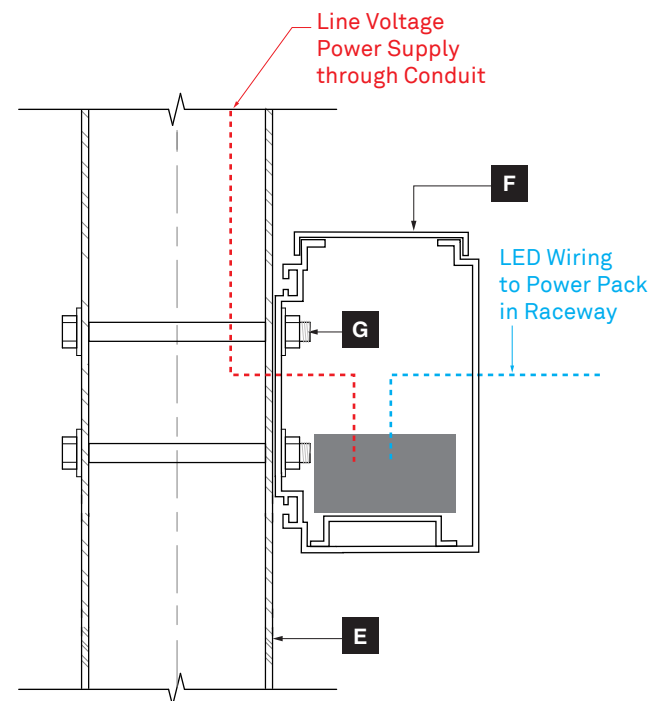
NOTE *
Final survey should be conducted by
Sign Contractor to verify conditions prior to
fabrication / install.



A Front Elevation - Shopping Center - Brand ID
3/32" = 1'-0"



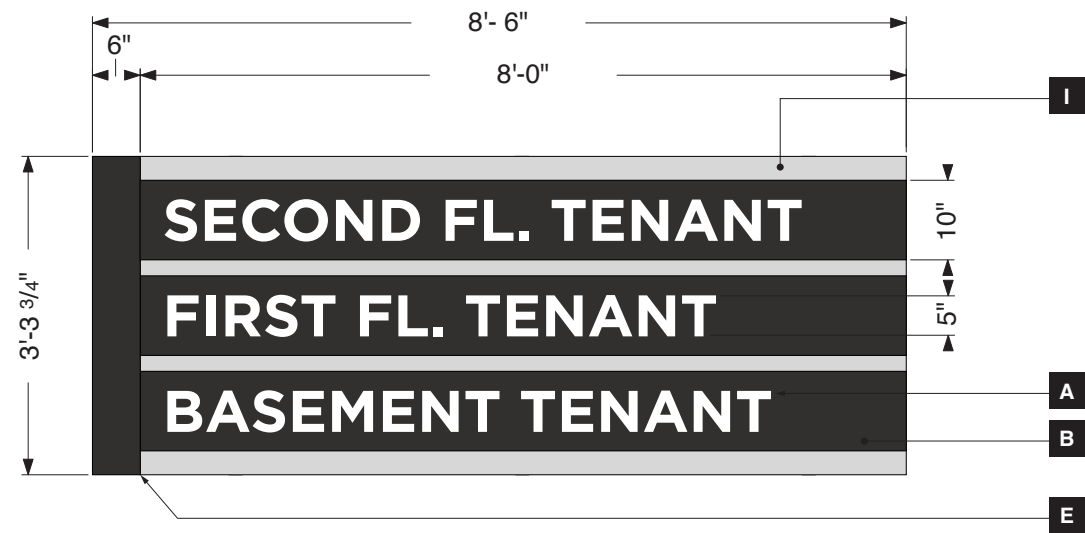
A Section - Storefront Sign
3/8" = 1'-0"



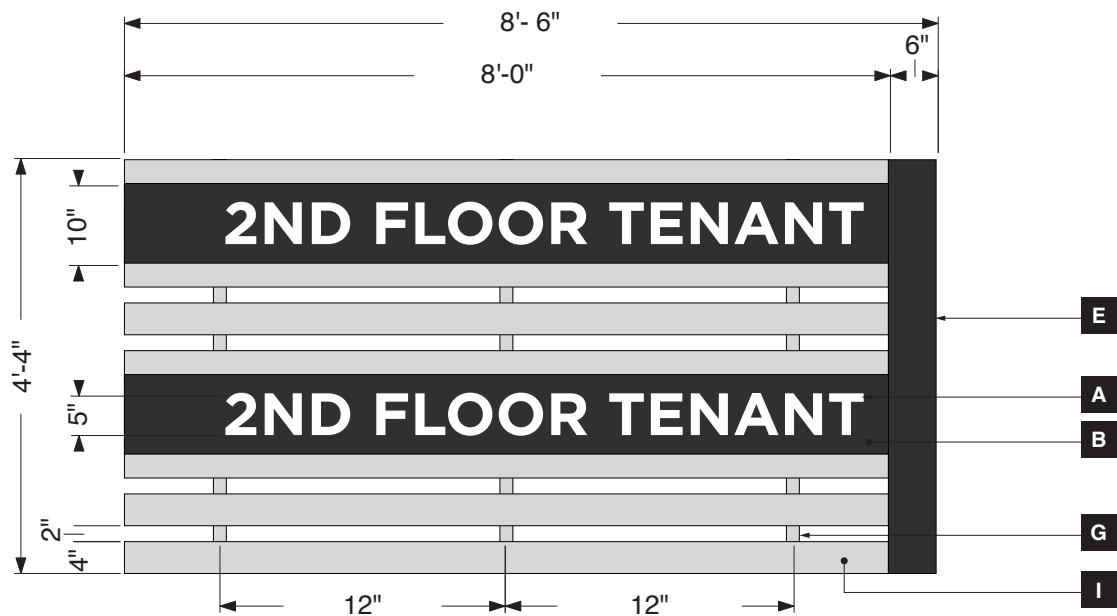
B Detail - Raceway Attachment
3" = 1'-0"

- A** Fabricated Letter - Acrylic Letter Face
3/16" #2406 Translucent White Acrylic
- B** Fabricated Letter - Trimcap
1" Jewelite Trimcap w/ Self-Tapping S.S. Pan Head
Screw(s) Epoxy bond to Acrylic Letter Face
- C** Fabricated Letter - Can
5" D .090" Bent Aluminum Return
w/ 1/8" Thk. ACM Letter Back
- D** Fabricated Letter - Illumination
L.E.D. Illumination - Product Per Manufacturer Spec.
4000k "Cool White" Temperature
- E** Storefront Vertical Framework
Aluminum tube framework
V.I.F. Size + Construction
- F** Raceway
4" x 7" (+/-) Extruded Aluminum Raceway
Mechanically fastened to Storefront Vertical Framework
- G** Anchor Fastener
316 S.S. Hex Head Bolt, 1/2" -13 thread, Length T.B.D.
W/ Nut + Washers
MMC#94819A055
MMC#90107A033

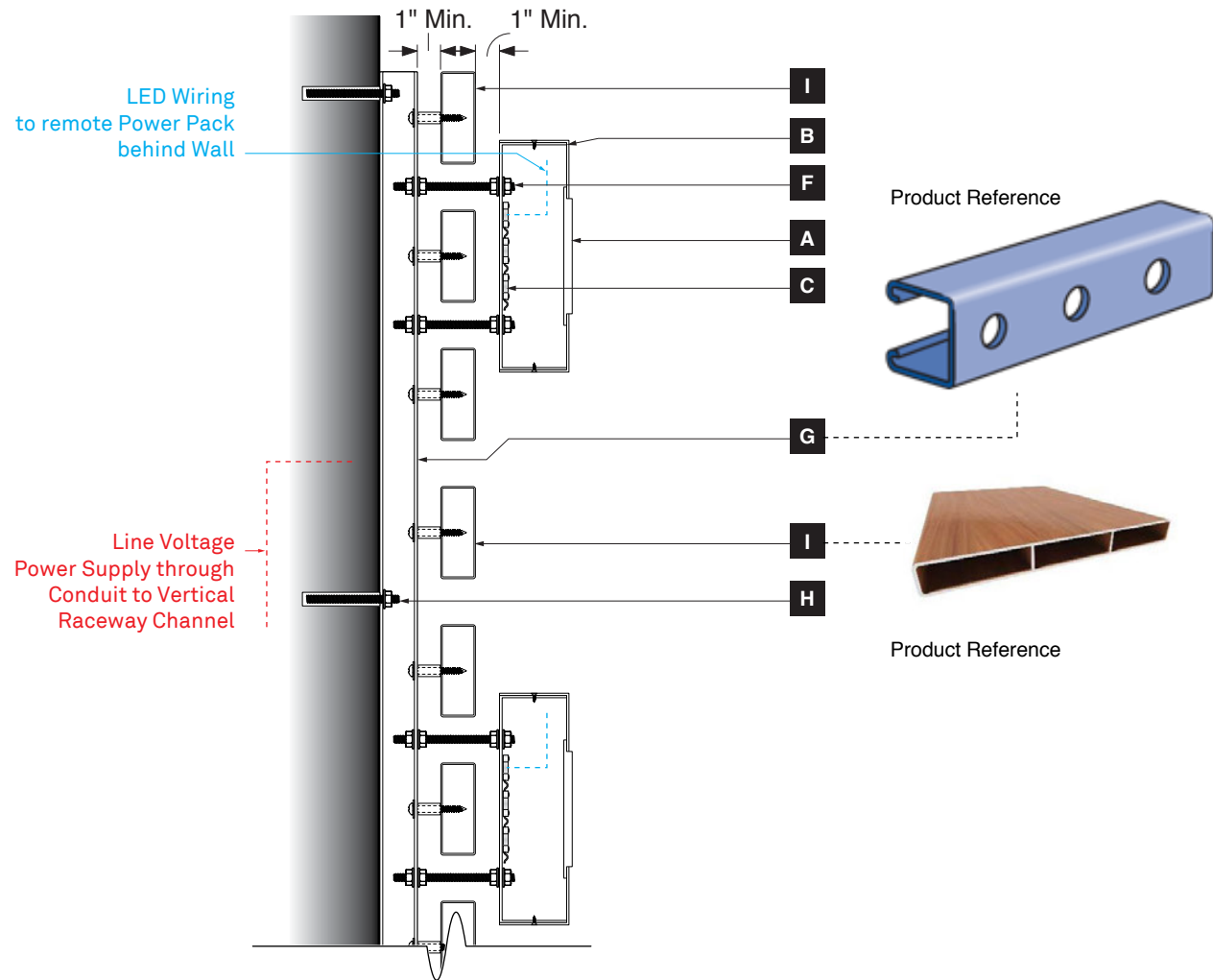
NOTE *
Final survey should be conducted by
Sign Contractor to verify conditions prior to
fabrication / install.



B Detail Elevation - Multi Tenant Panel (Pad Building)
1/2" = 1'-0"



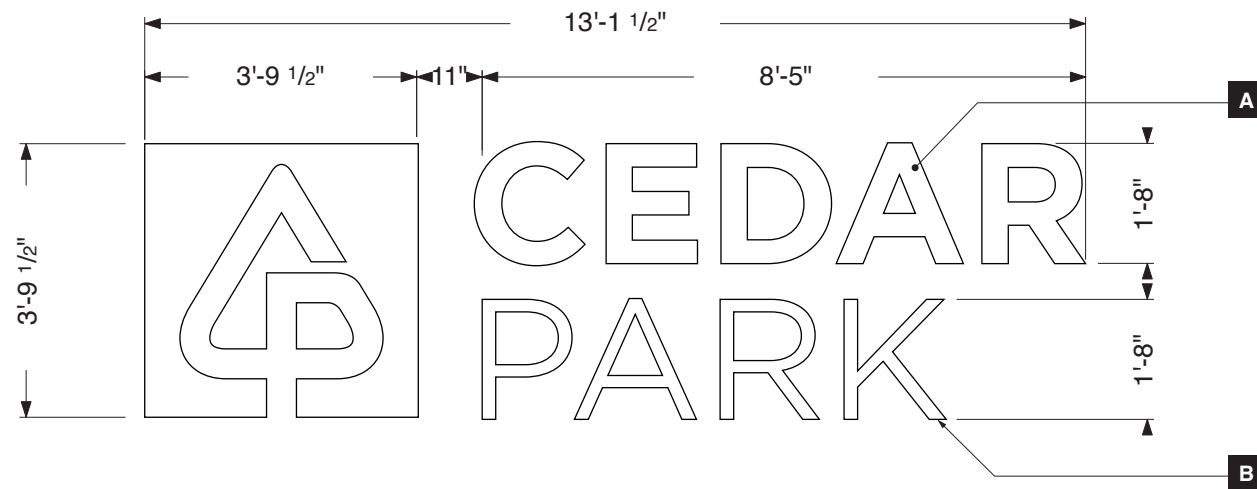
A Detail Elevation - Multi Tenant Panel (Shopping Center)
1/2" = 1'-0"



C Section - Multi-Tenant Sign - Typical
1 1/2" = 1'-0"

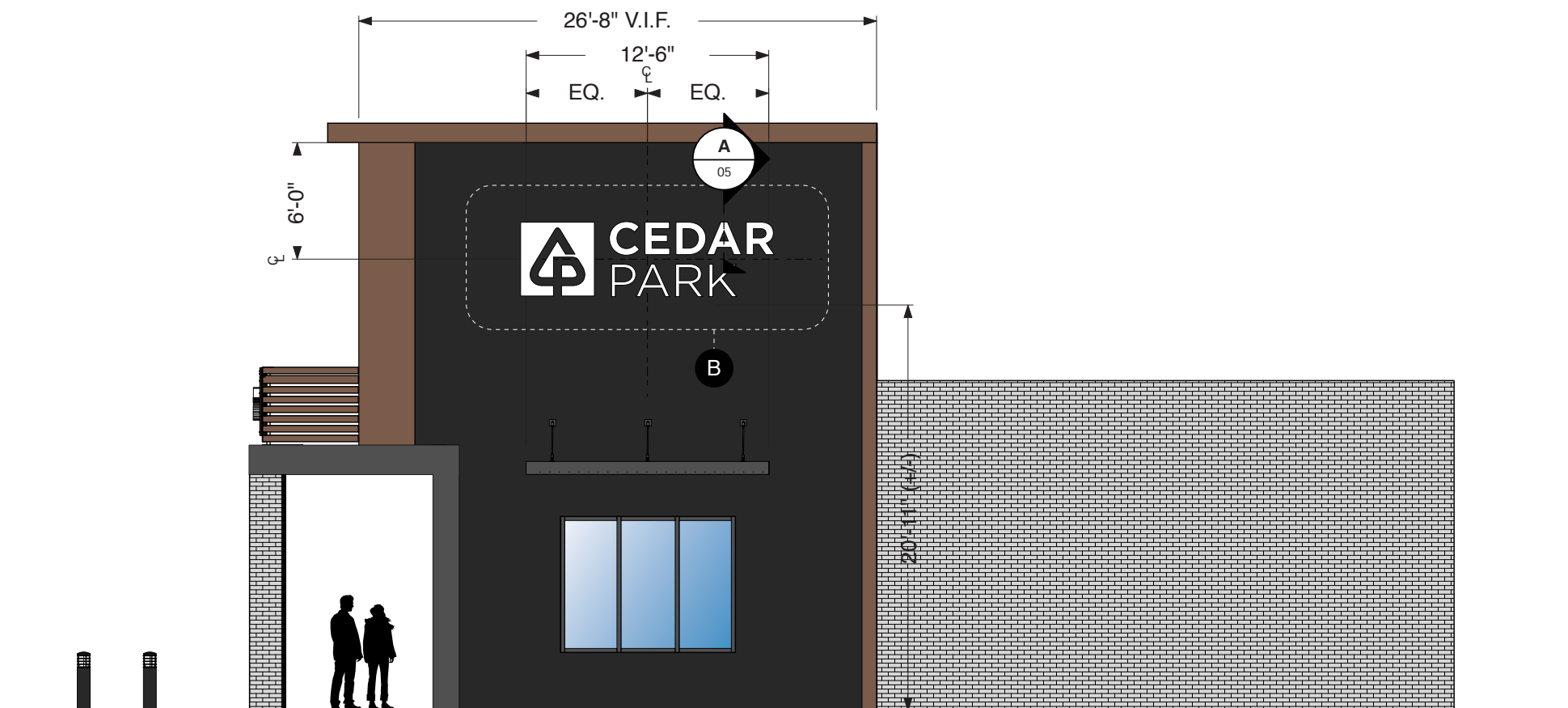
- A** Push-Thru Lettering
3/8" Clear Acrylic w/ 1/8" routed flange + 1/8" visible return at cabinet face w/ Applied Translucent Vinyl
- B** Tenant Panel Cabinet
3" D Fabricated Aluminum Cabinet Construction w/ custom routed face
- C** Fabricated Letter - Illumination
L.E.D. Illumination - Product Per Manufacturer Spec. 4000k "Cool White" Temperature
- D** Power Pack
Remote Power Pack, located in Vertical Raceway Channel Final Product Spec. T.B.D. per Manufacturer Recom.
- E** Raceway
6" x 6" Fabricated Aluminum Vertical Raceway Channel Mechanically fastened to Horizontal Slats/Structure
- F** Tenant Panel Mounting
1/2"-20 S.S. All-Thread Support Rod from Unistrut to secure Tenant Panel Cabinet w/ S.S. Hex Nut, MMC#94804A345 and Washers, MMC#90107A033 *Anchor Fasteners can move to different Unistrut Locations for Tenant Panel Replacement without affecting Slats*
- G** Unistrut Supports
P1000HS - 1-5/8" x 1-5/8", 12 Gage; 9/16" Dia. Round Holes @ 1.875" O.C. Painted to Match Wall Surface *Install at 12" O.C. Vertically on Wall Surface w/ 1" Offset*
- H** Anchor Fastener
1/2"-20 Thread HILTI Epoxy Anchor through Wall (Required Depth T.B.D. by Engineer) w/ Exposed Thread at Wall Surface to secure Unistrut w/ S.S. Hex Nut, MMC#94804A345 and Washer, MMC#90107A033
- I** Horizontal Slats
Extruded Aluminum "Slat" Profiles by Knotwood Painted to Match Wall Surface

NOTE *
Final survey should be conducted by Sign Contractor to verify conditions prior to fabrication / install.



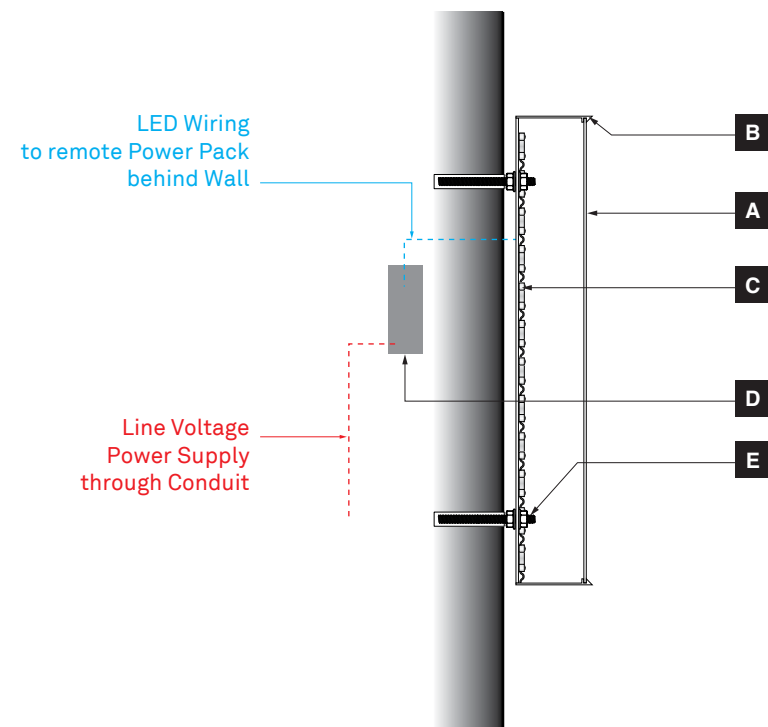
B Sign Detail Elevation
3/8" = 1'-0"

Sign Sqft: 49.75 Sqft.
Kelvin Level: 4000k (Cool White)



A Right Side Elevation - Shopping Center - Brand ID
1/8" = 1'-0"

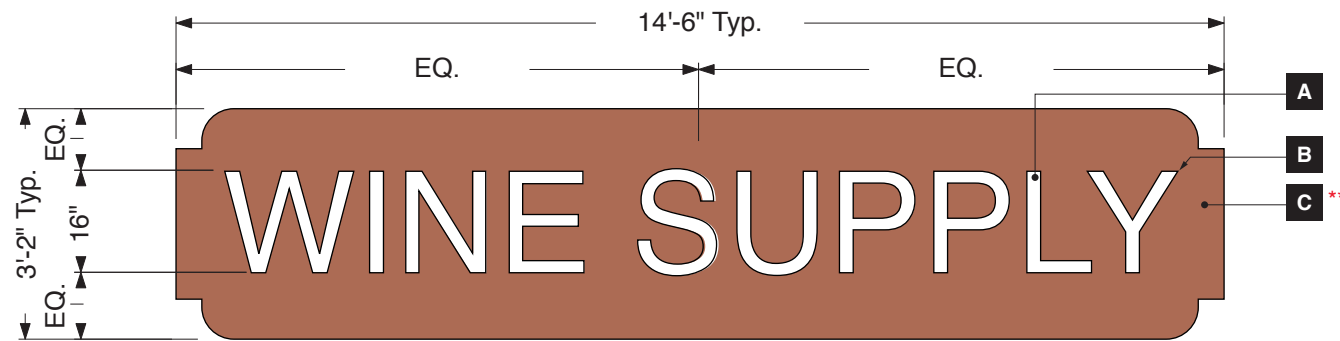
NOTE *
Final survey should be conducted by
Sign Contractor to verify conditions prior to
fabrication / install.



A Section - Storefront Sign
1 1/2" = 1'-0"

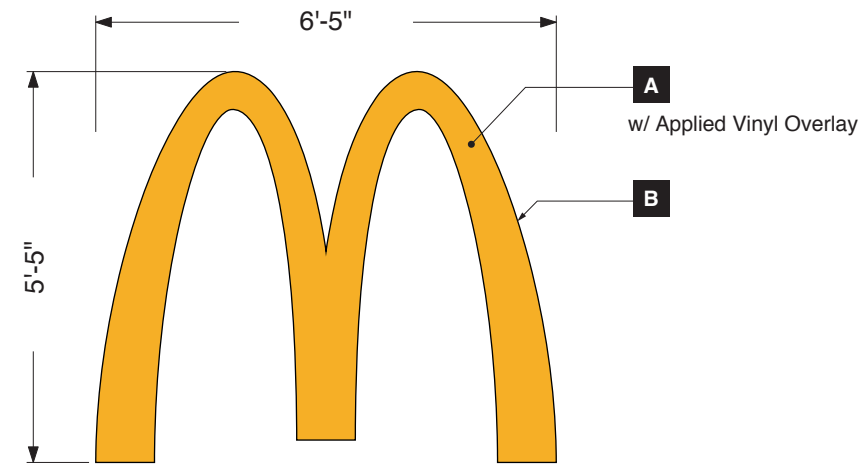
- A** Fabricated Letter - Acrylic Letter Face
3/16" #2406 Translucent White Acrylic
- B** Fabricated Letter - Can
3" D .090" Bent Aluminum Return Profile w/
Integrated Acrylic Letter Face Retainer
w/ 1/8" Thk. ACM Letter Back
- C** Fabricated Letter - Illumination
L.E.D. Illumination - Product Per Manufacturer Spec.
4000k "Cool White" Temperature
- D** Power Pack
Remote Power Pack, located behind wall surface
Final Product Spec. T.B.D. per Manufacturer Recom.
- E** Anchor Fastener
1/2"-20 Thread HILTI Epoxy Anchor through Wall
(Required Depth T.B.D. by Engineer) w/ Exposed Thread
at Wall Surface to secure Letter w/ S.S. Hex Nut,
MMC#94804A345 and Washer, MMC#90107A033

NOTE *
Final survey should be conducted by
Sign Contractor to verify conditions prior to
fabrication / install.



B Detail Elevation - Inline Tenant Sign
3/8" = 1'-0"

Sign Sqft: Sqft. Varies
Kelvin Level: 4000k (Cool White)



C Detail Elevation - End Anchor Sign
3/8" = 1'-0"

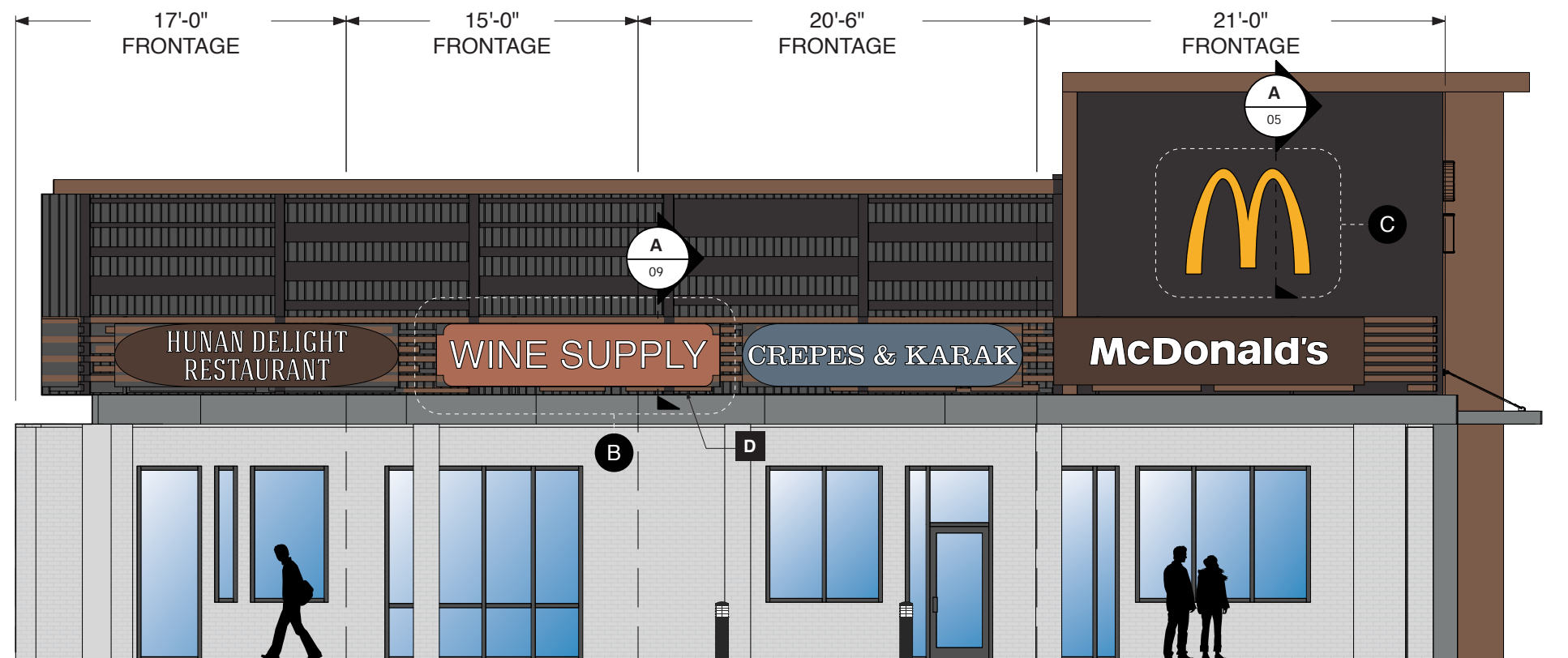
Sign Sqft: 34.74 Sqft.
Kelvin Level: 4000k (Cool White)

- A** Fabricated Letter - Acrylic Letter Face
3/16" #2406 Translucent White Acrylic
- B** Fabricated Letter - Can
3" D .090" Bent Aluminum Return Profile w/
Integrated Acrylic Letter Face Retainer
w/ 1/8" Thk. ACM Letter Back
- C** Tenant Sign Panel **
2" D Fabricated Aluminum Pan Construction w/
Flathead + Countersunk fasteners on return edge to
secure Sign Panel Face to Backer
- D** Sign Band
Extruded Aluminum "Slat" Profiles by Knotwood
w/ "Woodgrain" Pattern - Final Color Spec. T.B.D.

NOTE *
Final survey should be conducted by
Sign Contractor to verify conditions prior to
fabrication / install.

NOTE **
Tenants are encouraged to maximize their brand
identity within constraints of materials, color and
illumination that fits the design character of the
Cedar Park Shopping Center. Tenant Sign Panels can
be of custom shape (see Example Panel Shapes)
that enhance Tenant identity. In-Line tenants must
select from an Architect defined color palette.

Example Panel Shapes



A Front Elevation - Shopping Center - Inline Tenants
1/8" = 1'-0"



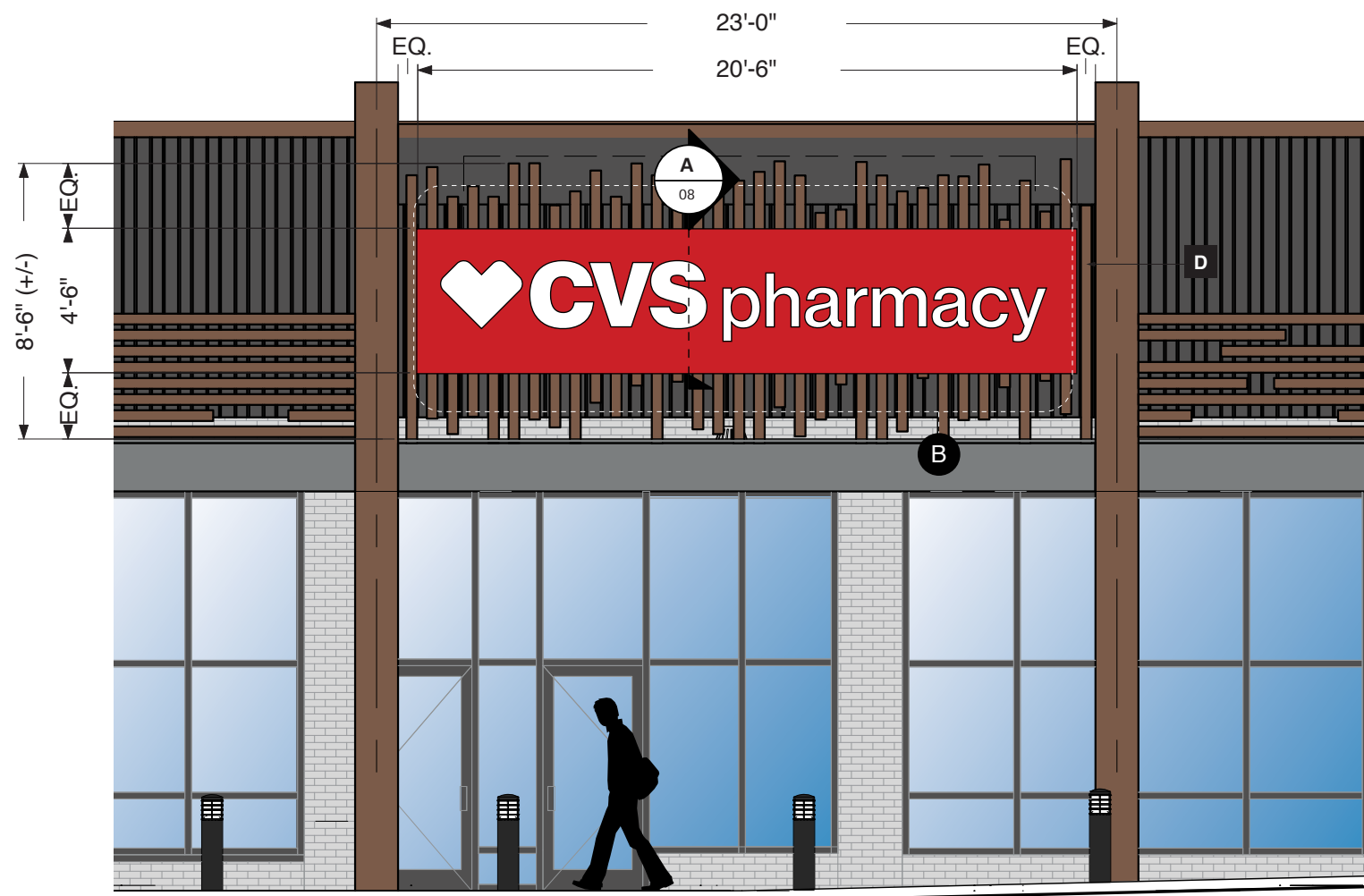
- A** Fabricated Letter - Acrylic Letter Face
3/16" #2406 Translucent White Acrylic
- B** Fabricated Letter - Can
3" D .090" Bent Aluminum Return Profile w/
Integrated Acrylic Letter Face Retainer
w/ 1/8" Thk. ACM Letter Back
- C** Tenant Sign Panel **
2" D Fabricated Aluminum Pan Construction w/
Flathead + Countersunk fasteners on return edge to
secure Sign Panel Face to Backer
- D** Sign Band
Extruded Aluminum "Slat" Profiles by Knotwood
w/ "Woodgrain" Pattern - Final Color Spec. T.B.D.

B Detail Elevation - Junior Anchor Tenant Sign
3/8" = 1'-0"

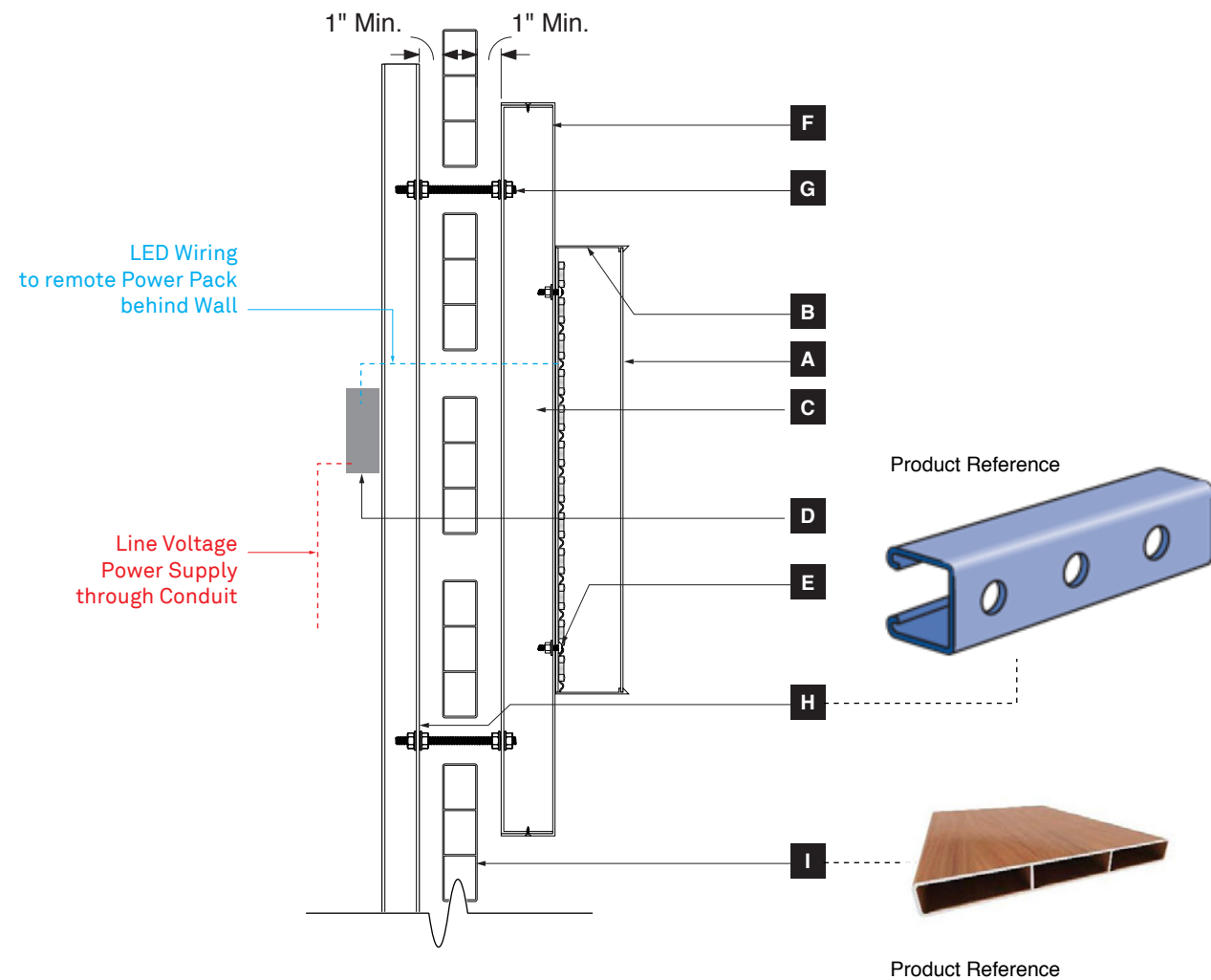
Sign Sqft: 46.05 Sqft.
Kelvin Level: 4000k (Cool White)

NOTE *
Final survey should be conducted by
Sign Contractor to verify conditions prior to
fabrication / install.

NOTE **
Tenants are encouraged to maximize their brand
identity within constraints of materials, color and
illumination that fits the design character of the
Cedar Park Shopping Center. Tenant Sign Panels
can be of custom shape (see Design Benchmarks)
that enhance Tenant identity. Junior Anchor Tenants
may use brand specific color for Tenant Sign Panel
pending approval by Cedar Park Management.



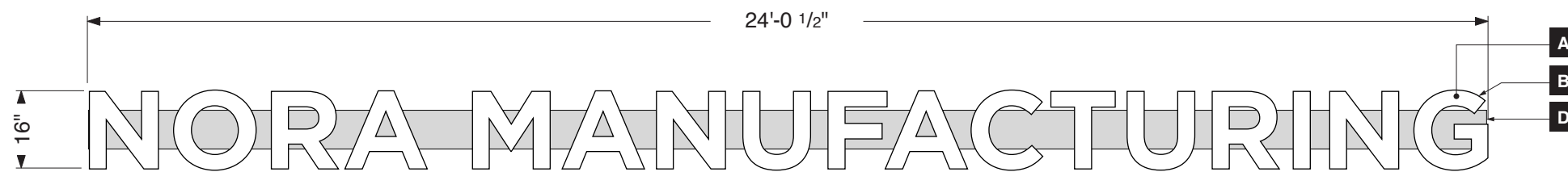
A Front Elevation - Shopping Center - Junior Anchor
3/16" = 1'-0"



A Section - Tenant Sign - Typical
1 1/2" = 1'-0"

- A** Fabricated Letter - Acrylic Letter Face
3/16" #2406 Translucent White Acrylic
- B** Fabricated Letter - Can
3" D .090" Bent Aluminum Return Profile w/
Integrated Acrylic Letter Face Retainer
w/ 1/8" Thk. ACM Letter Back
- C** Fabricated Letter - Illumination
L.E.D. Illumination - Product Per Manufacturer Spec.
4000k "Cool White" Temperature
- D** Power Pack
Remote Power Pack, located behind wall surface
Final Product Spec. T.B.D. per Manufacturer Recom.
- E** Letter Mounting
S.S. Bolt w/ Nut + Washer to secure Channel Letter
to Tenant Sign Panel Face
- F** Tenant Sign Panel
2" D Fabricated Aluminum Pan Construction w/
Flathead + Countersunk fasteners on return edge to
secure Sign Panel Face to Backer
- G** Anchor Fastener
1/2"-20 S.S. All-Thread Support Rod from Unistrut
to secure Tenant Sign Panel Backer w/ S.S. Hex Nut,
MMC#94804A345 and Washers, MMC#90107A033
*Anchor Fasteners can move to different Unistrut Locations
for Sign Panel Re-location without affecting Sign Band*
- H** Unistrut Supports
P1000HS - 1-5/8" x 1-5/8", 12 Gage;
9/16" Dia. Round Holes @ 1.875" O.C.
Powdercoat Black to Match Sign Band Support Structure
*Install at 48" O.C. Vertically behind Sign Band
w/ 1" Offset*
- I** Sign Band
Extruded Aluminum "Slat" Profiles by Knotwood
w/ "Woodgrain" Pattern - Final Color Spec. T.B.D.

NOTE *
Final survey should be conducted by
Sign Contractor to verify conditions prior to
fabrication / install.



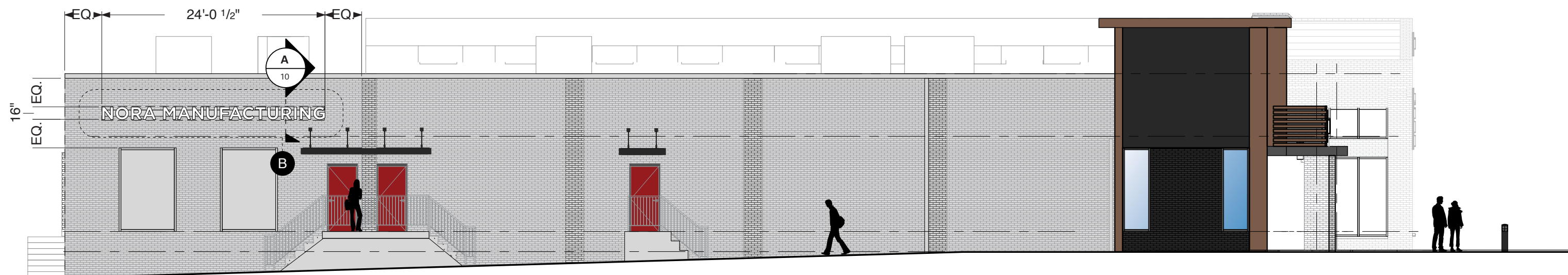
- A** Fabricated Letter - Acrylic Letter Face
3/16" #2406 Translucent White Acrylic
- B** Fabricated Letter - Can
3" D .090" Bent Aluminum Return Profile w/
Integrated Acrylic Letter Face Retainer
w/ 1/8" Thk. ACM Letter Back
- C** Fabricated Letter - Illumination
L.E.D. Illumination - Product Per Manufacturer Spec.
4000k "Cool White" Temperature
- D** Raceway
4" x 7" (+/-) Extruded Aluminum Raceway
Mechanically fastened to Storefront Wall Surface

NOTE *

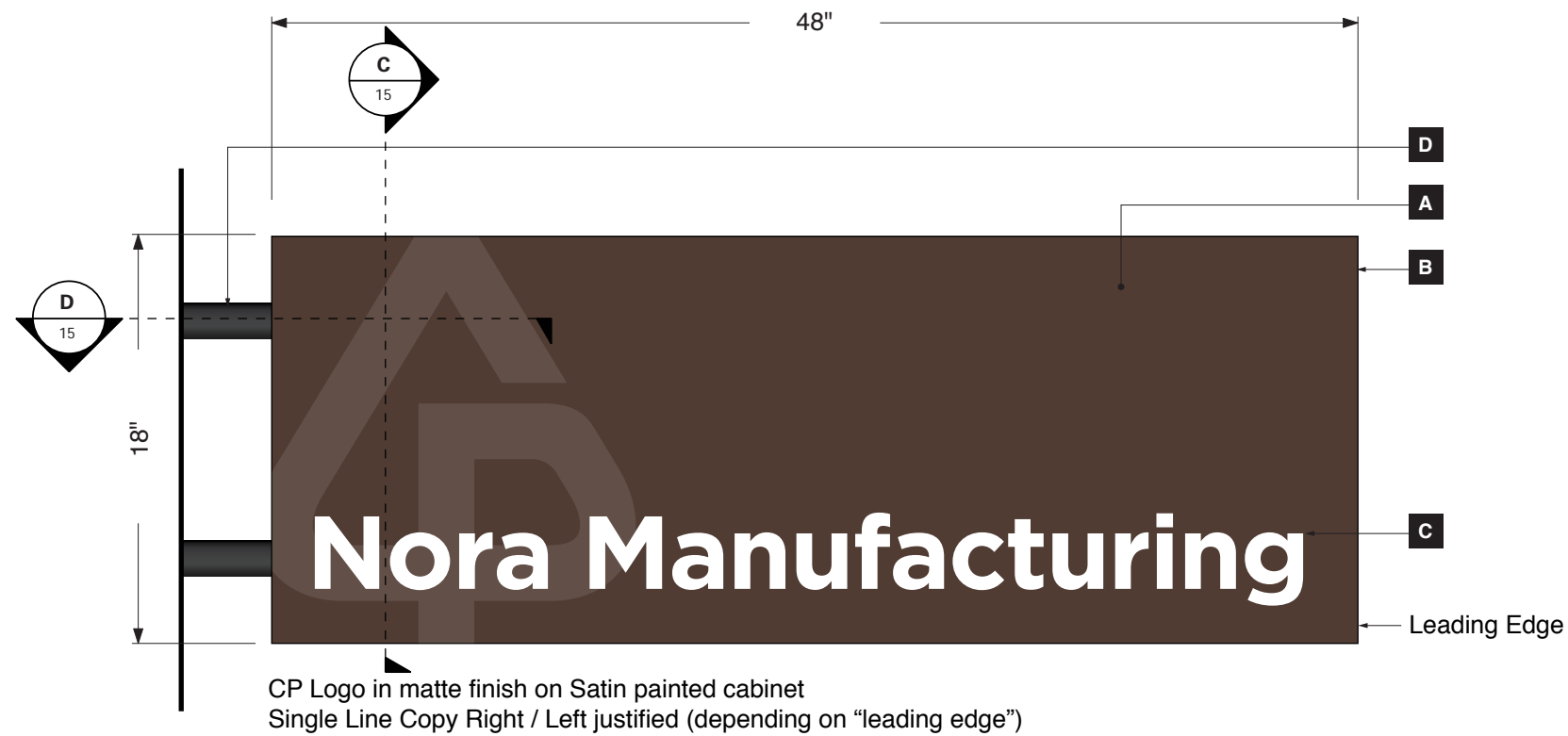
Final survey should be conducted by
Sign Contractor to verify conditions prior to
fabrication / install.

B Sign Detail Elevation
3/16" = 1'-0"

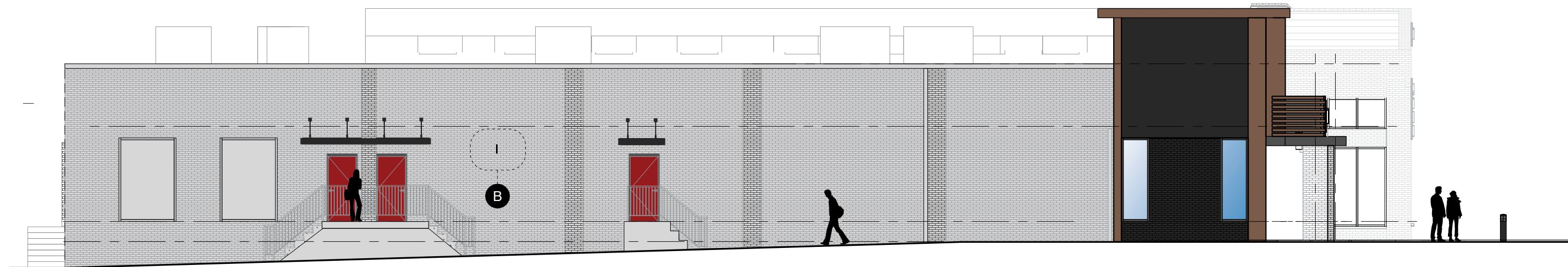
Sign Sqft: 32.04 Sqft.
Kelvin Level: 4000k (Cool White)



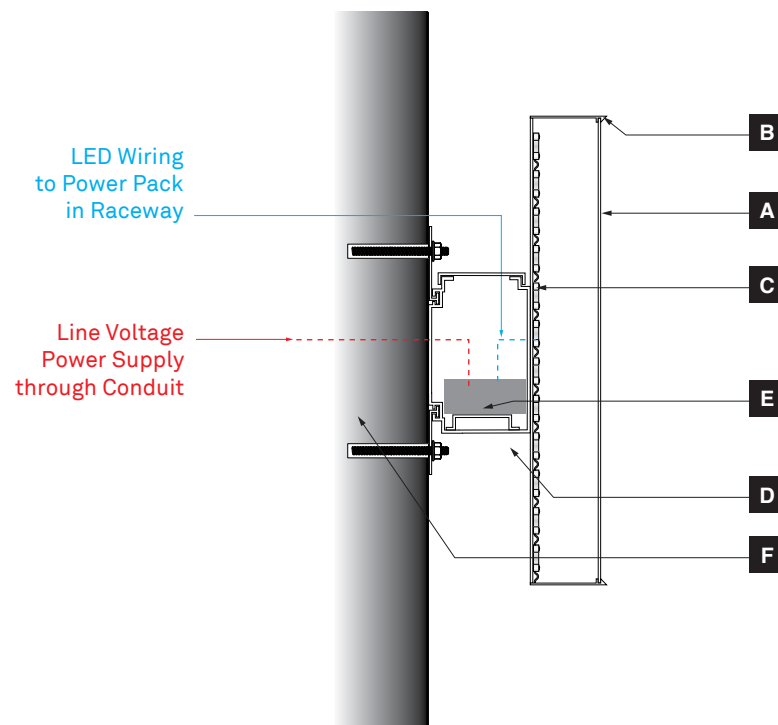
A Left Elevation - Shopping Center - Tenant ID
3/32" = 1'-0"



B Elevation - Projecting Blade Sign - Typical - Left Side Layout
1 1/2" = 1'-0"



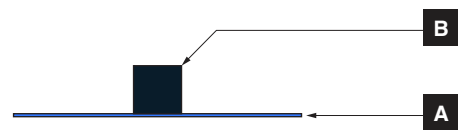
A Left Elevation - Shopping Center - Tenant ID
3/32" = 1'-0"



A Section - Storefront Sign - Raceway Mounted
1 1/2" = 1'-0"

- A** Fabricated Letter - Acrylic Letter Face
3/16" #2406 Translucent White Acrylic
- B** Fabricated Letter - Can
3" D .090" Bent Aluminum Return Profile w/
Integrated Acrylic Letter Face Retainer
w/ 1/8" Thk. ACM Letter Back
- C** Fabricated Letter - Illumination
L.E.D. Illumination - Product Per Manufacturer Spec.
4000k "Cool White" Temperature
- D** Raceway
4" x 7" (+/-) Fabricated Aluminum Raceway
Mechanically fastened to Storefront Vertical Framework
- E** Power Pack
Remote Power Pack, located behind wall surface
Final Product Spec. T.B.D. per Manufacturer Recom.
- F** Anchor Fastener
1/2"-20 Thread HILTI Epoxy Anchor through Wall
(Required Depth T.B.D. by Engineer) w/ Exposed Thread
at Wall Surface to secure Letter w/ S.S. Hex Nut,
MMC#94804A345 and Washer, MMC#90107A033

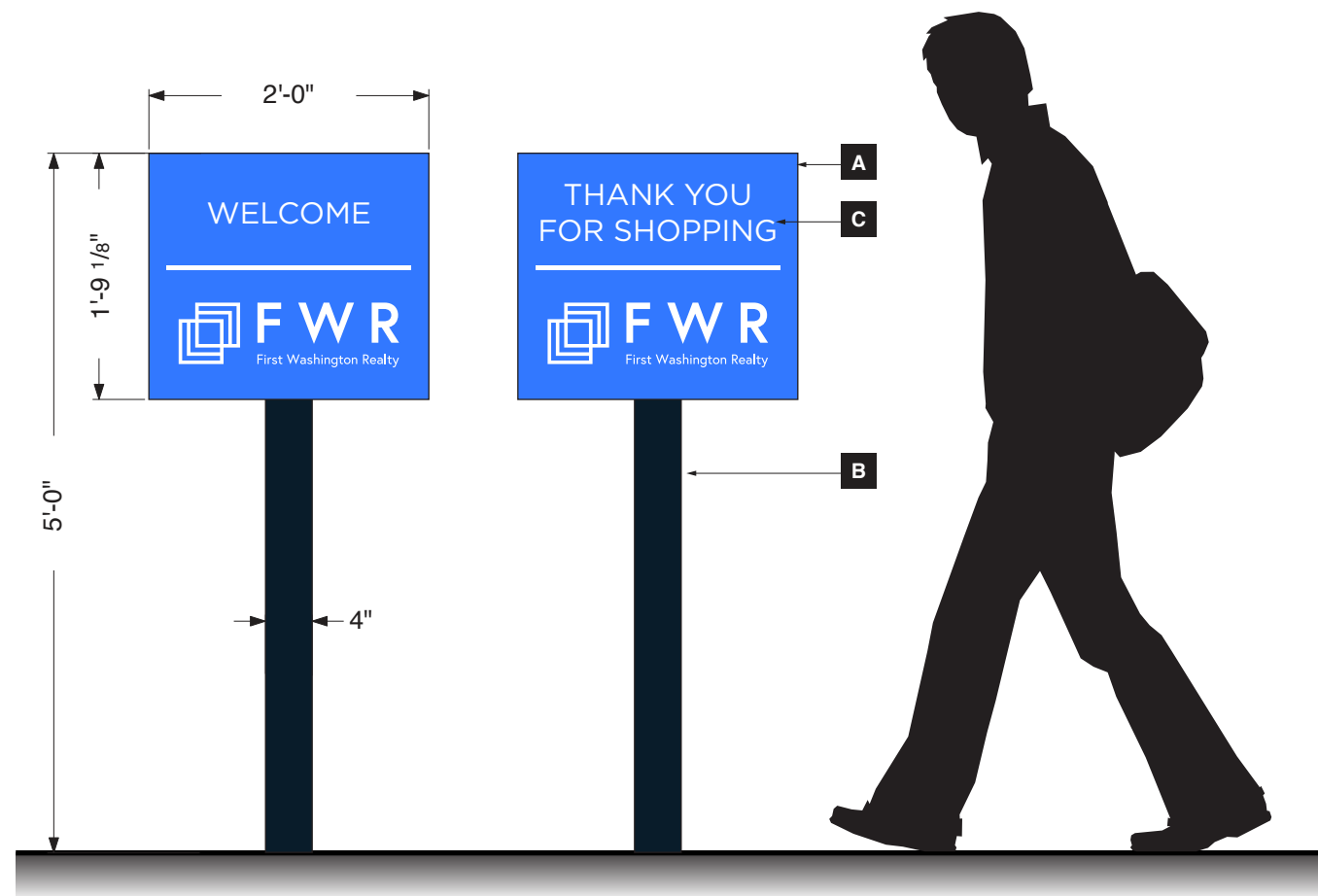
NOTE *
Final survey should be conducted by
Sign Contractor to verify conditions prior to
fabrication / install.



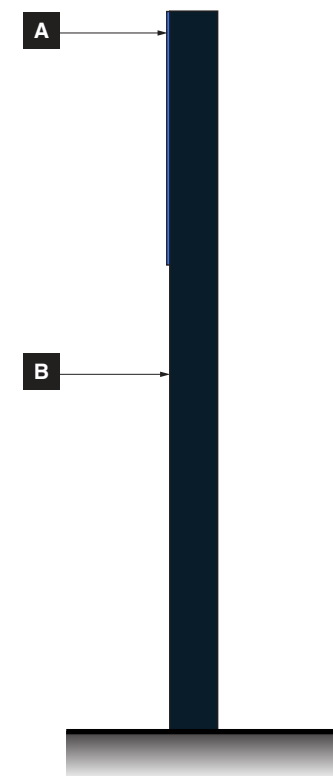
B Sign Elevation - Welcome Post + Panel
3/4" = 1'-0"

- A** Sign Panel
1/4" thk. cut aluminum, secured w/ concealed fasteners to Sign Post. Paint P8 - All Surfaces.
- B** Sign Post
4" x 4" x 1/8" aluminum tube.
Direct bury installation to footer below grade.
Paint P9 - All Surfaces.
- C** Sign Copy
Cut + Applied Vinyl. Match V1 - White Reflective

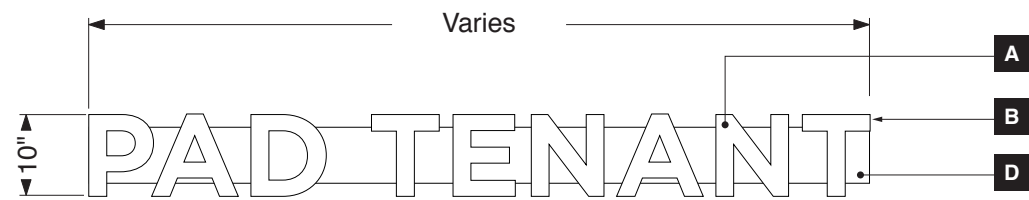
NOTE *
Final survey should be conducted by
Sign Contractor to verify conditions prior to
fabrication / install.



A Sign Elevation - Welcome Post + Panel
3/4" = 1'-0"



C Side Elevation
3/4" = 1'-0"

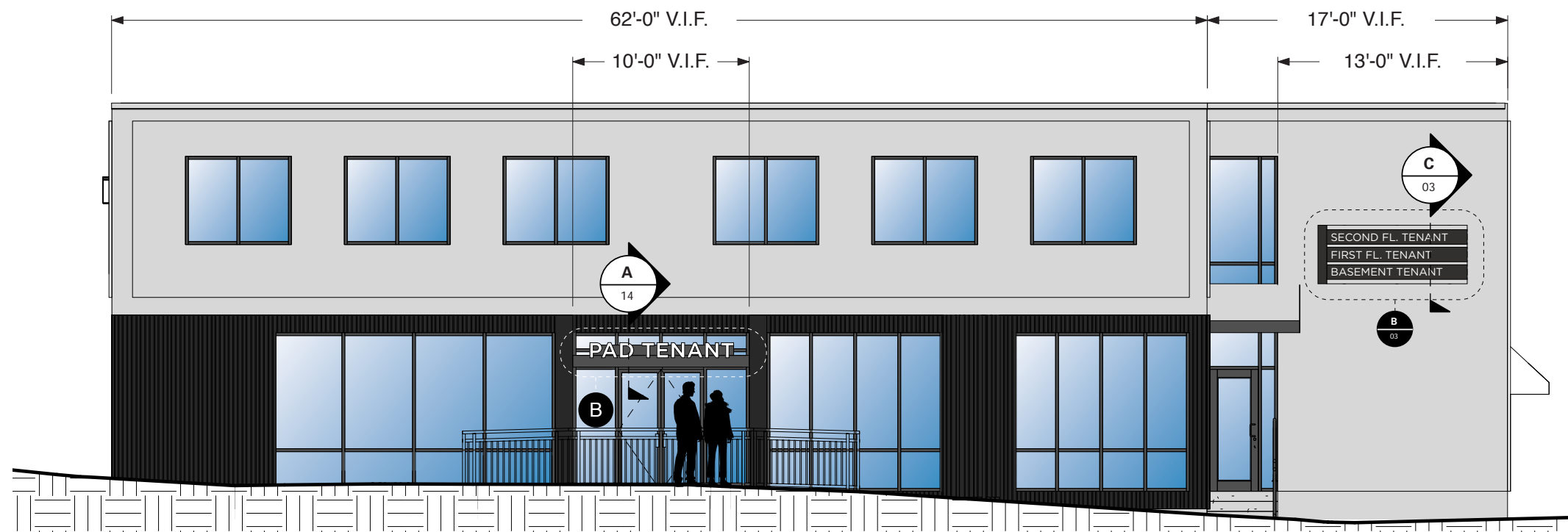


B Detail Elevation - Hidden / Pad Tenant Sign
 1/2" = 1'-0"

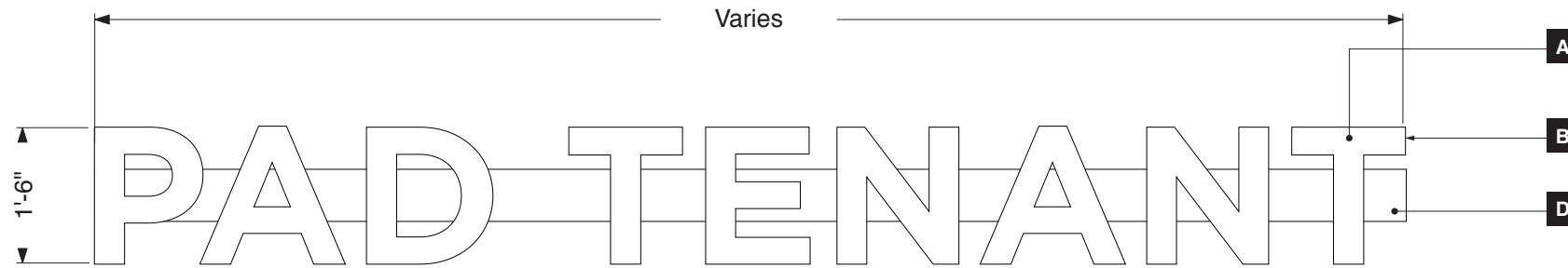
Sign Sqft: Sqft. Varies
 Kelvin Level: 4000k (Cool White)

- A** Fabricated Letter - Acrylic Letter Face
 3/16" #2406 Translucent White Acrylic
- B** Fabricated Letter - Can
 3" D .090" Bent Aluminum Return Profile w/
 Integrated Acrylic Letter Face Retainer
 w/ 1/8" Thk. ACM Letter Back
- C** Fabricated Letter - Illumination
 L.E.D. Illumination - Product Per Manufacturer Spec.
 4000k "Cool White" Temperature
- D** Raceway
 4" x 7" (+/-) Extruded Aluminum Raceway
 Mechanically fastened at base to Sign Band

NOTE *
 Final survey should be conducted by
 Sign Contractor to verify conditions prior to
 fabrication / install.



A Front Elevation - Shopping Center - Pad Building
 1/8" = 1'-0"

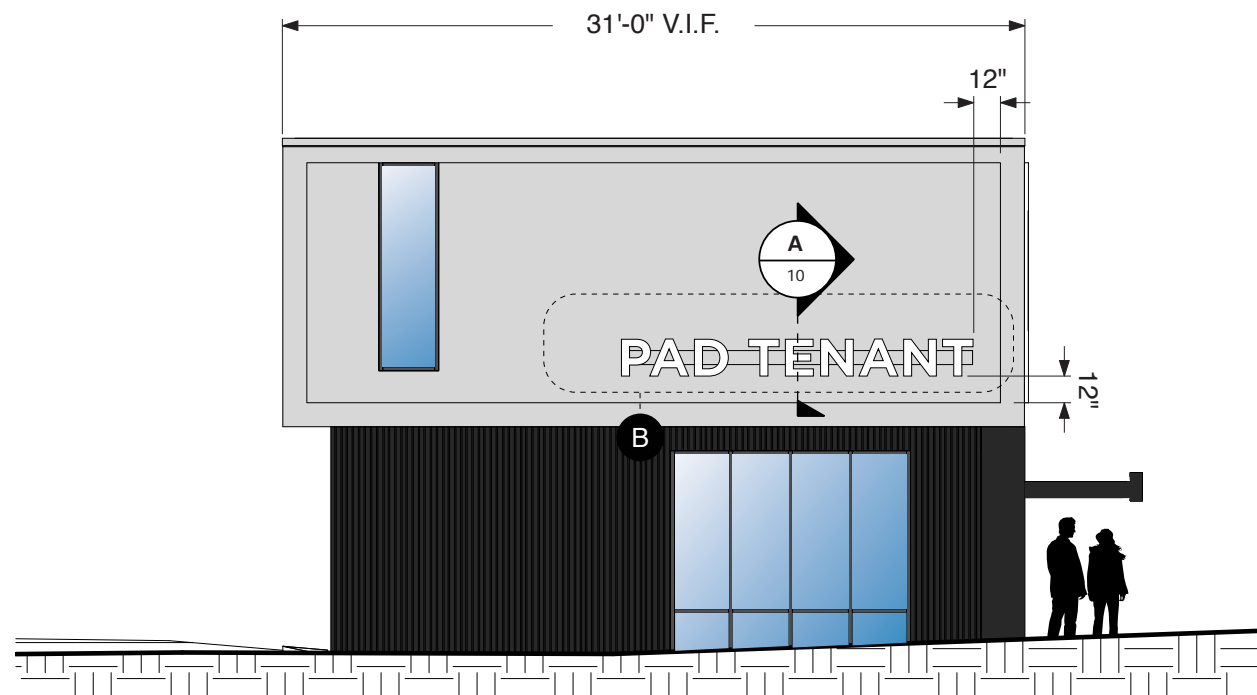


B Detail Elevation - Pad Tenant Sign
1/2" = 1'-0"

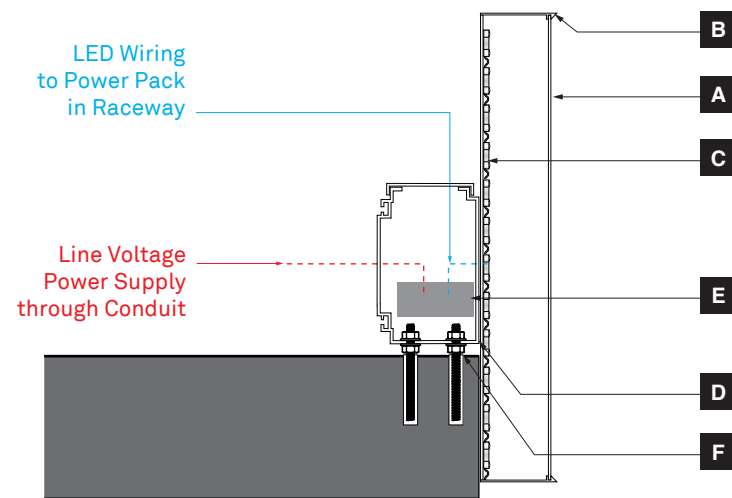
Sign Sqft: Sqft. Varies
Kelvin Level: 4000k (Cool White)

- A** Fabricated Letter - Acrylic Letter Face
3/16" #2406 Translucent White Acrylic
- B** Fabricated Letter - Can
3" D .090" Bent Aluminum Return Profile w/
Integrated Acrylic Letter Face Retainer
w/ 1/8" Thk. ACM Letter Back
- C** Fabricated Letter - Illumination
L.E.D. Illumination - Product Per Manufacturer Spec.
4000k "Cool White" Temperature
- D** Raceway
4" x 7" (+/-) Extruded Aluminum Raceway
Mechanically fastened to Storefront Wall

NOTE *
Final survey should be conducted by
Sign Contractor to verify conditions prior to
fabrication / install.



A Left Elevation - Shopping Center - Pad Building
1/8" = 1'-0"



A Section - Storefront Sign - Raceway Mounted - Sign Band
 1 1/2" = 1'-0"

- A** Fabricated Letter - Acrylic Letter Face
 3/16" #2406 Translucent White Acrylic

- B** Fabricated Letter - Can
 3" D .090" Bent Aluminum Return Profile w/
 Integrated Acrylic Letter Face Retainer
 w/ 1/8" Thk. ACM Letter Back

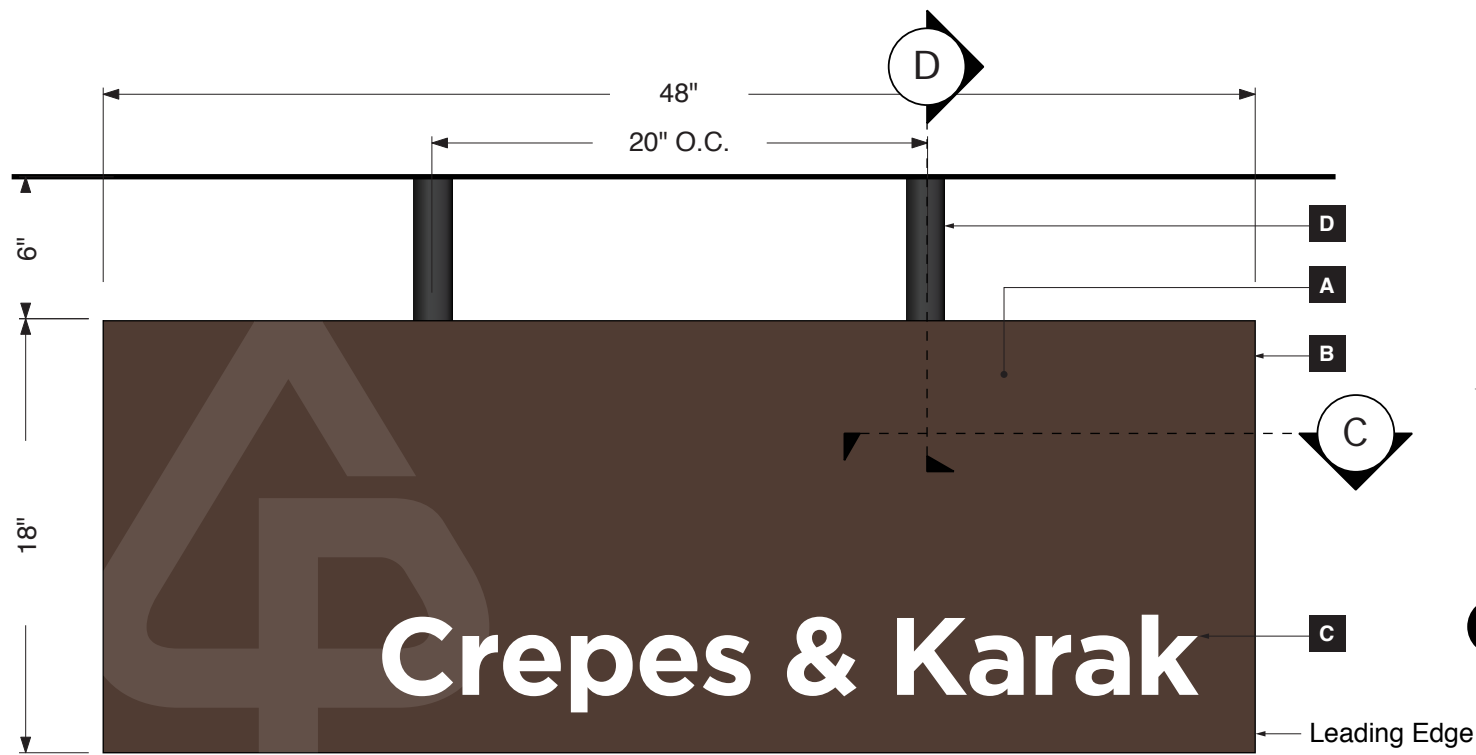
- C** Fabricated Letter - Illumination
 L.E.D. Illumination - Product Per Manufacturer Spec.
 4000k "Cool White" Temperature

- D** Raceway
 4" x 7" (+/-) Extruded Aluminum Raceway
 Mechanically fastened at base to Sign Band

- E** Power Pack
 Remote Power Pack, located behind wall surface
 Final Product Spec. T.B.D. per Manufacturer Recom.

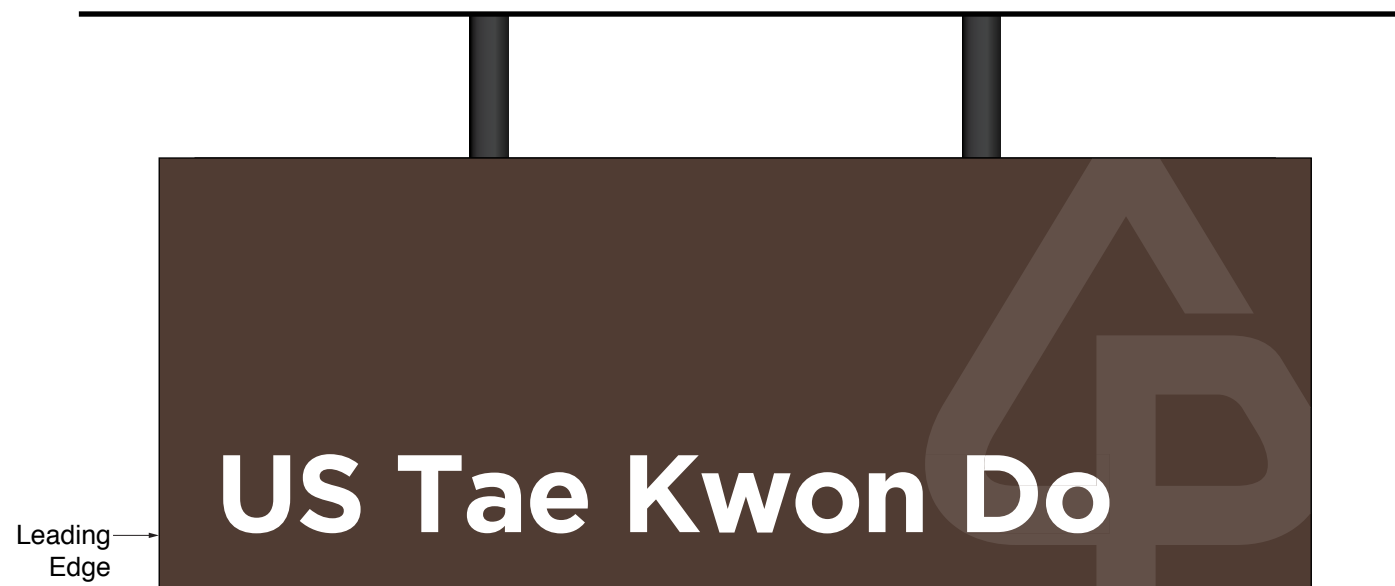
- F** Anchor Fastener
 1/2"-20 Thread HILTI Epoxy Anchor through Wall
 (Required Depth T.B.D. by Engineer) w/ Exposed Thread
 at Wall Surface to secure Letter w/ S.S. Hex Nut,
 MMC#94804A345 and Washer, MMC#90107A033

NOTE *
 Final survey should be conducted by
 Sign Contractor to verify conditions prior to
 fabrication / install.

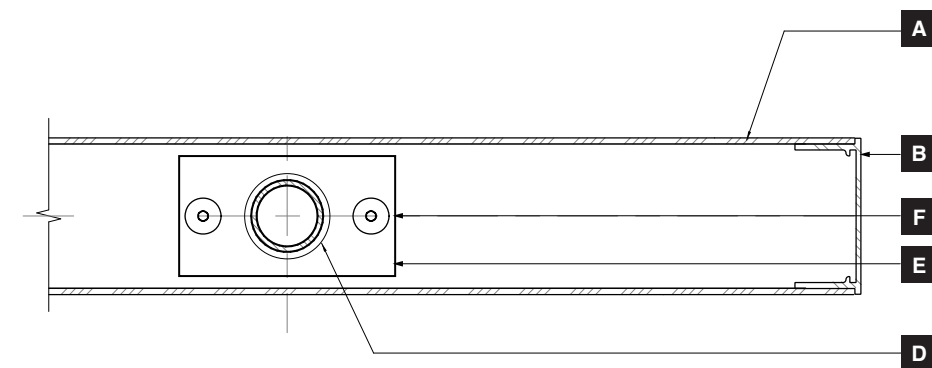


CP Logo in matte finish on Satin painted cabinet
Single Line Copy Right / Left justified (depending on "leading edge")

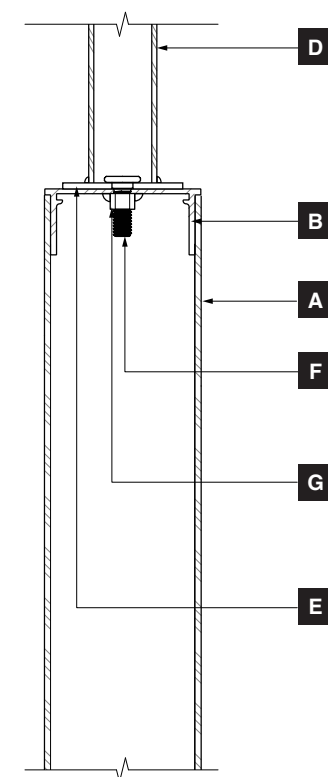
A Elevation - Under Canopy Sign - Typical - Left Side Layout
1 1/2" = 1'-0"



B Elevation - Under Canopy Sign - Typical - Right Side Layout
1 1/2" = 1'-0"



C Section Detail - Plan View - Typical
3" = 1'-0"



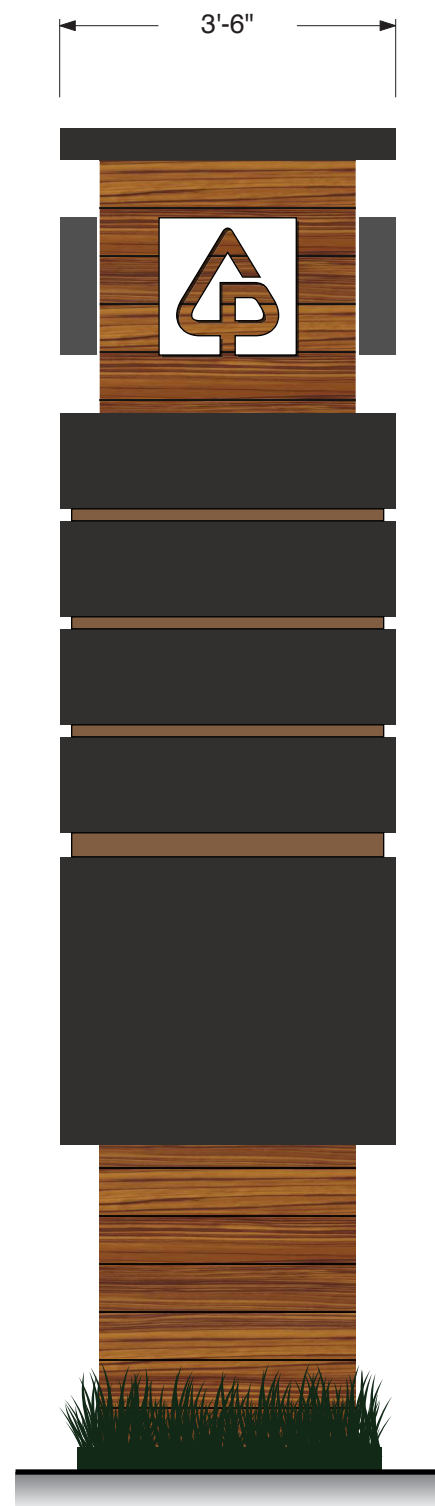
D Section Detail - Side View - Typical
3" = 1'-0"

- A** Sign Panel
3mm Composite Aluminum. Bonded to Sign Frame
Paint All Surfaces - P4
- B** Sign Frame
SignComp #1270 Series 3 Bleed Body. Mitre-Cut +
Welded at interior corners.
Paint All Surfaces - P4
- C** Sign Copy - Typical
Cut + Applied Opaque Vinyl Graphics
- D** Mounting Pipe
1 1/2" OD 6061-T6 Aluminum Mounting Pipe
Continuous welded connection to Alum Mounting Plate
Paint All Surfaces - P1
- E** Mounting Plate
4 1/2" x 2 1/2" x 1/8" Thk. Welded Alum. Mounting Plate
- F** Fastener
Ultra-Low-Profile Socket Head Screw, 3/8"-16 Thread, 1"L
MMC#91223A231
- G** Hex Nut
Aluminum Hex Nut, 3/8"-16 Thread, Weled to Sign Frame
MMC#90670A031

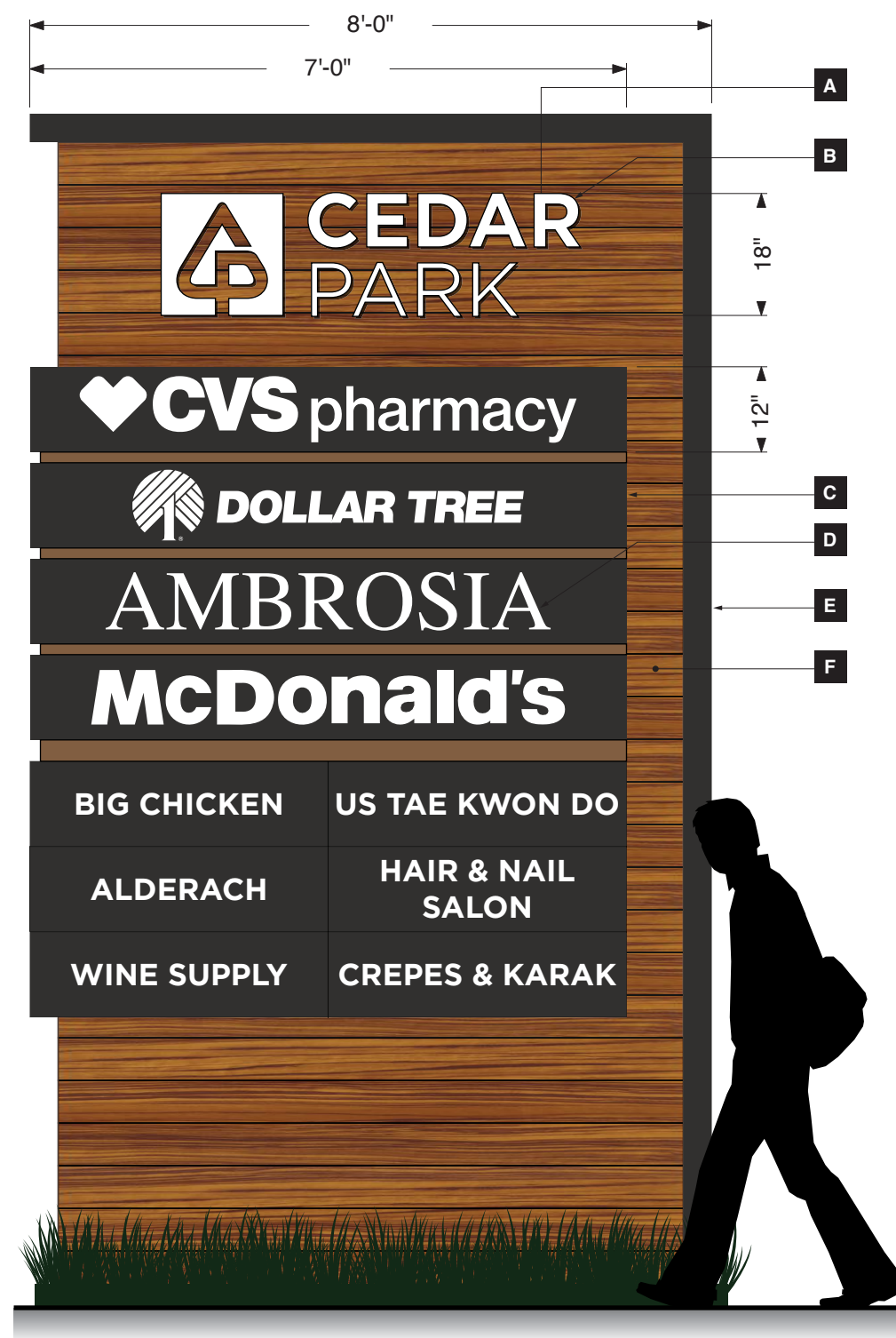
NOTE *
Final survey should be conducted by
Sign Contractor to verify conditions prior to
fabrication / install.



A Left Face - Elevation - Multi-Tenant Pylon
1/2" = 1'-0"



B Side Elevation
1/2" = 1'-0"



C Right Face - Elevation
1/2" = 1'-0"

- A** Fabricated Letter - Acrylic Letter Face
3/16" #2406 Translucent White Acrylic
- B** Fabricated Letter - Can
5" D .090" Bent Aluminum Return Profile w/
Integrated Acrylic Letter Face Retainer
w/ 1/8" Thk. ACM Letter Back
- C** Tenant Panel Cabinet
Fabricated Aluminum Cabinet Construction w/ custom
routed face + Fabricated Reveal between Panels
Paint P1 (Cabinet) / Paint P5 (Reveal)
- D** Tenant Sign Copy
3/8" Clear Acrylic w/ 1/8" routed flange + 1/8" visible
return at cabinet face w/ Applied Translucent Vinyl
- E** Outer Cabinet Frame
Fabricated Aluminum Cladding over Existing Structure
Paint P1
- F** Central Cabinet Cladding
Extruded Aluminum "Slat" Profiles by Knotwood
w/ Hickory "Woodgrain" Pattern
- I** Ground Treatment
Low-Lying Plantings at base of sign
by Landscape Contractor

NOTE *
Final survey should be conducted by
Sign Contractor to verify conditions prior to
fabrication / install.