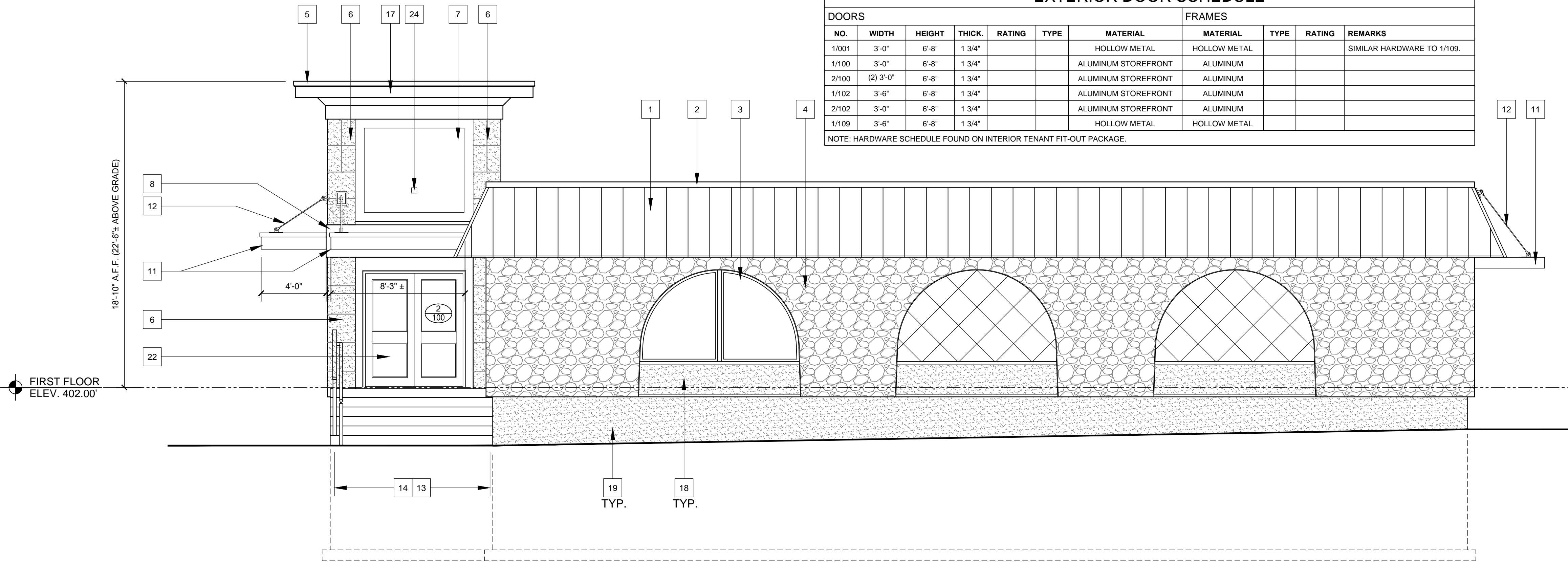


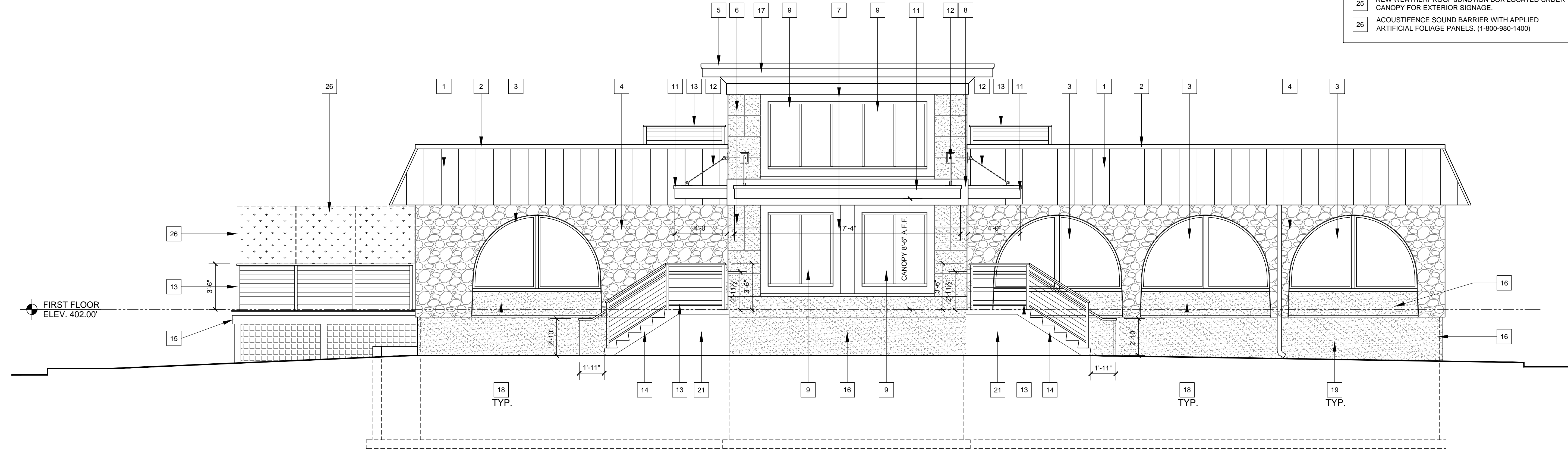
EXTERIOR DOOR SCHEDULE										
DOORS						FRAMES				
NO.	WIDTH	HEIGHT	THICK.	RATING	TYPE	MATERIAL	MATERIAL	TYPE	RATING	REMARKS
1/001	3'-0"	6'-8"	1 3/4"			HOLLOW METAL	HOLLOW METAL			SIMILAR HARDWARE TO 1/109.
1/100	3'-0"	6'-8"	1 3/4"			ALUMINUM STOREFRONT	ALUMINUM			
2/100	(2) 3'-0"	6'-8"	1 3/4"			ALUMINUM STOREFRONT	ALUMINUM			
1/102	3'-6"	6'-8"	1 3/4"			ALUMINUM STOREFRONT	ALUMINUM			
2/102	3'-0"	6'-8"	1 3/4"			ALUMINUM STOREFRONT	ALUMINUM			
1/109	3'-6"	6'-8"	1 3/4"			HOLLOW METAL	HOLLOW METAL			

NOTE: HARDWARE SCHEDULE FOUND ON INTERIOR TENANT FIT-OUT PACKAGE.

- ### ELEVATION KEYNOTE LEGEND
- REMOVE CLAY TILE. REPLACE WITH STANDING SEAM METAL ROOFING SYSTEM. COLOR: CHARCOAL
 - ALUMINUM WALL CAP FLASHING TO MATCH STANDING SEAM ROOF SYSTEM
 - EXISTING STOREFRONT WINDOWS. REPAIR AS REQUIRED AND PAINT BLACK.
 - EXISTING STONE VENEER TO REMAIN - PATCH AND CLEAN AS REQUIRED TO MATCH. PAINT WHITE
 - PRE-FINISHED ALUMINUM GRAVEL STOP COPING
 - WATER MANAGED EIFS SYSTEM OVER 5/8" DENSGLAS SHEATHING - COLOR: DOVE GRAY - SAND PEBBLE FIN.
 - WATER MANAGED EIFS SYSTEM OVER 5/8" DENSGLAS SHEATHING - COLOR: WHITE - SAND PEBBLE FINISH
 - WATER MANAGED EIFS SYSTEM OVER 5/8" DENSGLAS SHEATHING ON BAND - COLOR: WHITE
 - NEW STORE FRONT WINDOW IN ALUMINUM STOREFRONT FRAMING WITH 1" INSULATION GLASS.
 - 5/8" CELLULAR COMPOSITE TRIM AROUND WINDOW AND DOOR.
 - ALUMINUM CANOPY BY MAPES ARCHITECTURAL CANOPIES [mapescanopies.com, PHONE (888) 273-1132]. KYNAR COLOR: CLEAR ANODIZED ALUMINUM.
 - GALVANIZED STEEL CONNECTION ROD FRAMING ASSEMBLY, SUPPLIED BY CANOPY MANUFACTURER.
 - TREX SIGNATURE ALUMINUM RAILING SYSTEM w/ ROD RAIL KIT - COLOR: BLACK
 - NEW CONCRETE STAIR. LANDING OR RAMP. SEE NOTE #21 FOR VERTICAL FINISH.
 - TREATED WOODEN DECK WITH COMPOSITE DECKING SYSTEM
 - REPAIR EXISTING BRICK BASE COURSE WHERE LOOSE. APPLY CEMENT PARGE COAT
 - 3/4" CELLULAR PVC TRIM - PRIME AND PAINT
 - CLEAN EXISTING BRICK SURFACE BEFORE DIRECTLY APPLYING NEW DRYVIT SYSTEM BELOW ALL WINDOWS - COLOR: WHITE - FINISH: QUARTZPUTS
 - CEMENT PARGE-COAT OVER EXISTING BRICK FOUND. WALL. PAINT PARGE-COAT. COLOR: CHARCOAL
 - EXISTING BASEMENT STAIRS TO REMAIN. DIMENSION SHOWN IS REQUIRED OVERHEAD CLEARANCE.
 - GRIND FACE OF POURED CONCRETE WALL SMOOTH AND BAG RUB FOR FINISH.
 - NEW ALUMINUM STOREFRONT DOOR w/ BLACK KYNAR FINISH.
 - NEW INSULATED HOLLOW METAL DOOR, PAINT COLOR: BLACK.
 - NEW WEATHERPROOF JUNCTION BOX BEHIND PARAPET FOR EXTERIOR SIGNAGE.
 - NEW WEATHERPROOF JUNCTION BOX LOCATED UNDER CANOPY FOR EXTERIOR SIGNAGE.
 - ACOUSTIFENCE SOUND BARRIER WITH APPLIED ARTIFICIAL FOLIAGE PANELS. (1-800-980-1400)



RIGHT SIDE (NORTHEAST) ELEVATION
SCALE: 1/4" = 1'-0"



FRONT (SOUTHEAST) ELEVATION
SCALE: 1/4" = 1'-0"

REVISIONS		REMARKS
NO.	DATE	
1	3-09-2022	CLARIFY COLORS - ADD ACOUSTICAL FENCING

CERTIFY THAT THESE DOCUMENTS WERE PREPARED OR DESIGNED BY A LICENSED ARCHITECT UNDER THE LAWS OF THE COMMONWEALTH OF VIRGINIA

EXPIRES: 12/31/2025
EXPIRATION DATE: JUNE 30, 2025

3'-7" x 20" x 2"

ARCHITECTURE
ENGINEERING
INCORPORATED

IOTT

310 HAMMOND ST. • SUITE 100 • SALISBURY, MARYLAND
(410) 749-7229 • FAX (410) 749-0001

THE MAPLE ROOM
MAC ST. HOSPITALITY GROUP LLC
377 MAPLE AVENUE WEST
VIENNA, VIRGINIA

FRONT AND RIGHT SIDE ELEVATIONS

DATE: DEC. 2, 2021	IOTT PROJ. NO.: 20-065
DESIGN BY: KI	DRAWN BY:
SCALE: 1/4" = 1'-0"	STAGE: RESUBMISSION
DWG. FILE: 20-065 A300	

A
300