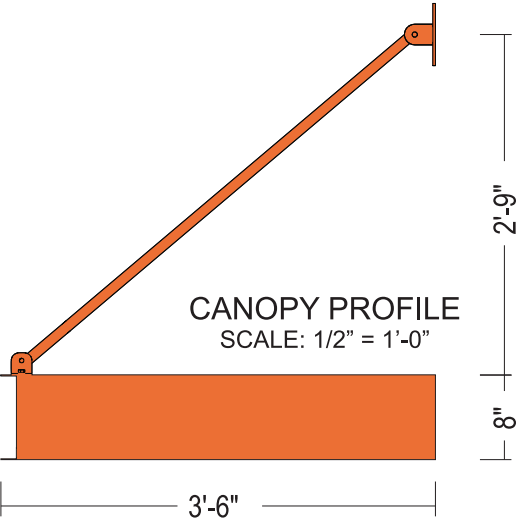
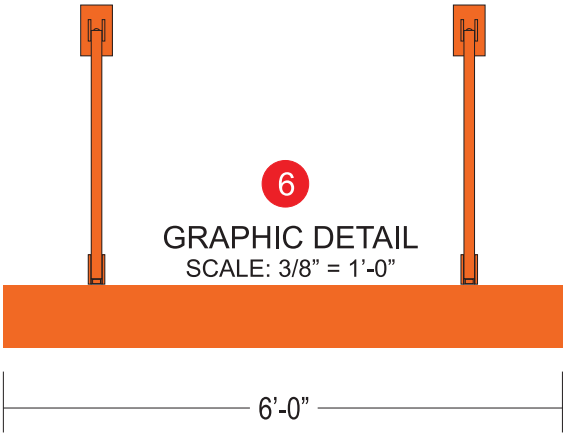


EAST ELEVATION
SCALE: 1/8" = 1'-0"

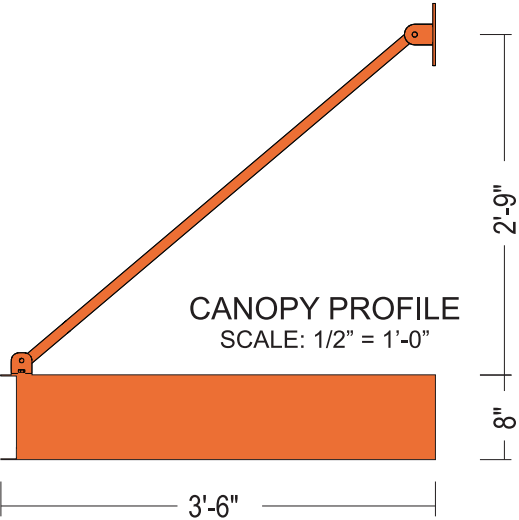
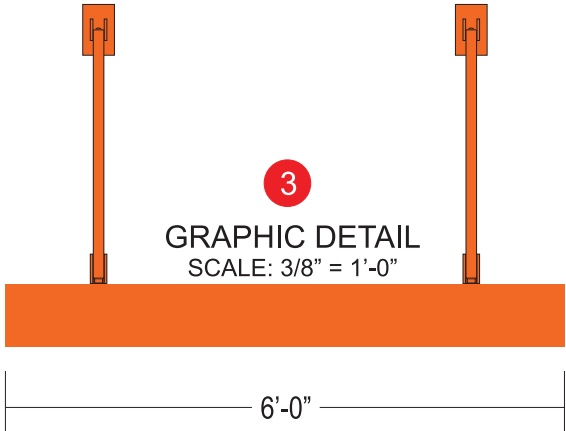
CANOPY, BANDS, DRIVE THRU WINDOW AND COLOR DETAILS ONLY; SIGNAGE GRAYED OUT AND NOT INCLUDED.



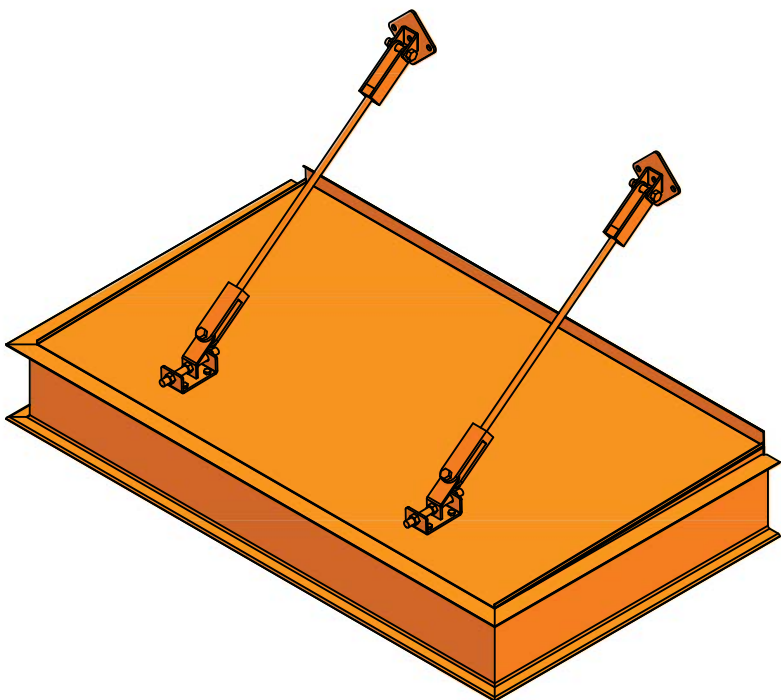
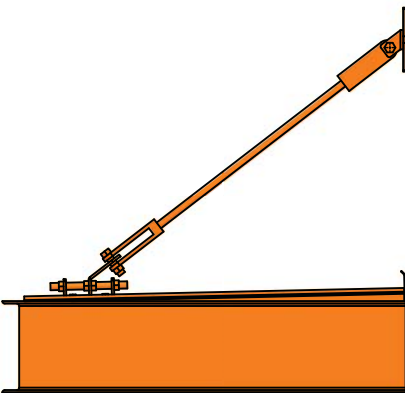
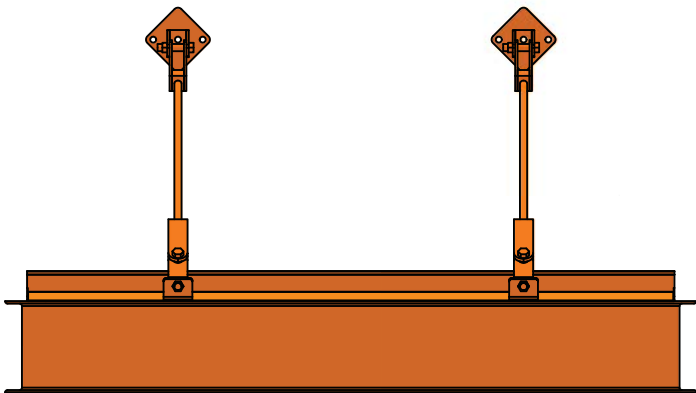
TECHNICAL SURVEY REQUIRED PRIOR TO PRODUCTION TO CONFIRM MEASUREMENTS

WEST ELEVATION
SCALE: 1/8" = 1'-0"

CANOPY, BANDS, DRIVE THRU WINDOW AND COLOR DETAILS ONLY; SIGNAGE GRAYED OUT AND NOT INCLUDED.



TECHNICAL SURVEY REQUIRED PRIOR TO
PRODUCTION TO CONFIRM MEASUREMENTS



BLOCKING REQUIRED
NOT PROVIDED BY USI
SEE PROJECTION PAGE(S)
FOR SPACING

BLOCKING REQUIRED
NOT PROVIDED BY USI
SEE PROJECTION PAGE(S)
FOR SPACING

COLOR SCHEDULE

COLOR: PMS 3564C ORANGE

BAND SCHEDULE

TYPE	QTY	BAND SECTION SIZE
B1	8	12'WIDTH X 4"PROJECTION

CORNER SCHEDULE

OC	6	OUTSIDE CORNER
IC	2	INSIDE CORNER

PRE-FAB CANOPY SCHEDULE

TYPE	QTY	CANOPY SIZE	ROD	LIGHT
C1	2	6'-0"W X 3'-6"P X 9 1/2"H	4	2

NOTE:
NO ARCH PLAN
INLCUDE 6 ADAPTER PLATES

BANDS COME IN 12' STICKS
AND ARE CUT ON SITE.
USI DOES NOT PRE CUT BANDS TO FIT
STRUCTURES.

ALL ALUMINUM TO BE 6061-T6 U.N.O.
ALL ALUMINUM TO ALUMINUM WELDS
TO BE 3/16" FILLETS ALL AROUND
UTILIZING 4043 FILLER U.N.O.
ALL STEEL TO STEEL WELDS TO BE 3/16"
FILLETS ALL AROUND U.N.O.



Uni-Structures, Inc.
The Drive-Thru Specialists
8540 COBB CENTER DR.
STE 100 KENNESAW, GA 30152
PHONE: (770)-499-2000
PHONE: (800)-386-9864

CLIENT: **DUNKIN**

MADE IN THE USA

LOCATION: 411 Maple Avenue Vienna, VA 22180
SALES: S. FREYMAN DESIGNER: C. JOCSON
ASSEMBLY #: 26972-CALLOUT

DATE: 10/1/2025
DWG #: 26972
STORE #: --

FILE:N:\Projects\Dunkin\Jobs\Vienna, VA (Maple Ave.)\CAD\

ENGINEERING STAMP

PART #: 26972-CALLOUT

DESCRIPTION: SHEET METAL

MATERIAL: 3003-H14

THICKNESS: "Thickness@Sheet-Metal@Part.SLDPRT"

WEIGHT: 0.889 LBS

STATUS:
P D

PAGE: 1 REV. 0

REVISION AND ENGINEERING LOG			
REV. #	DESCRIPTION	DATE CHANGED	CHANGED BY
0	PD COMPLETE	10/01/2025	C.JOCSON

ALL ALUMINUM TO BE 6061-T6 U.N.O.
ALL ALUMINUM TO ALUMINUM WELDS
TO BE 3/16" FILLETS ALL AROUND
UTILIZING 4043 FILLER U.N.O.
ALL STEEL TO STEEL WELDS TO BE 3/16"
FILLETS ALL AROUND U.N.O.

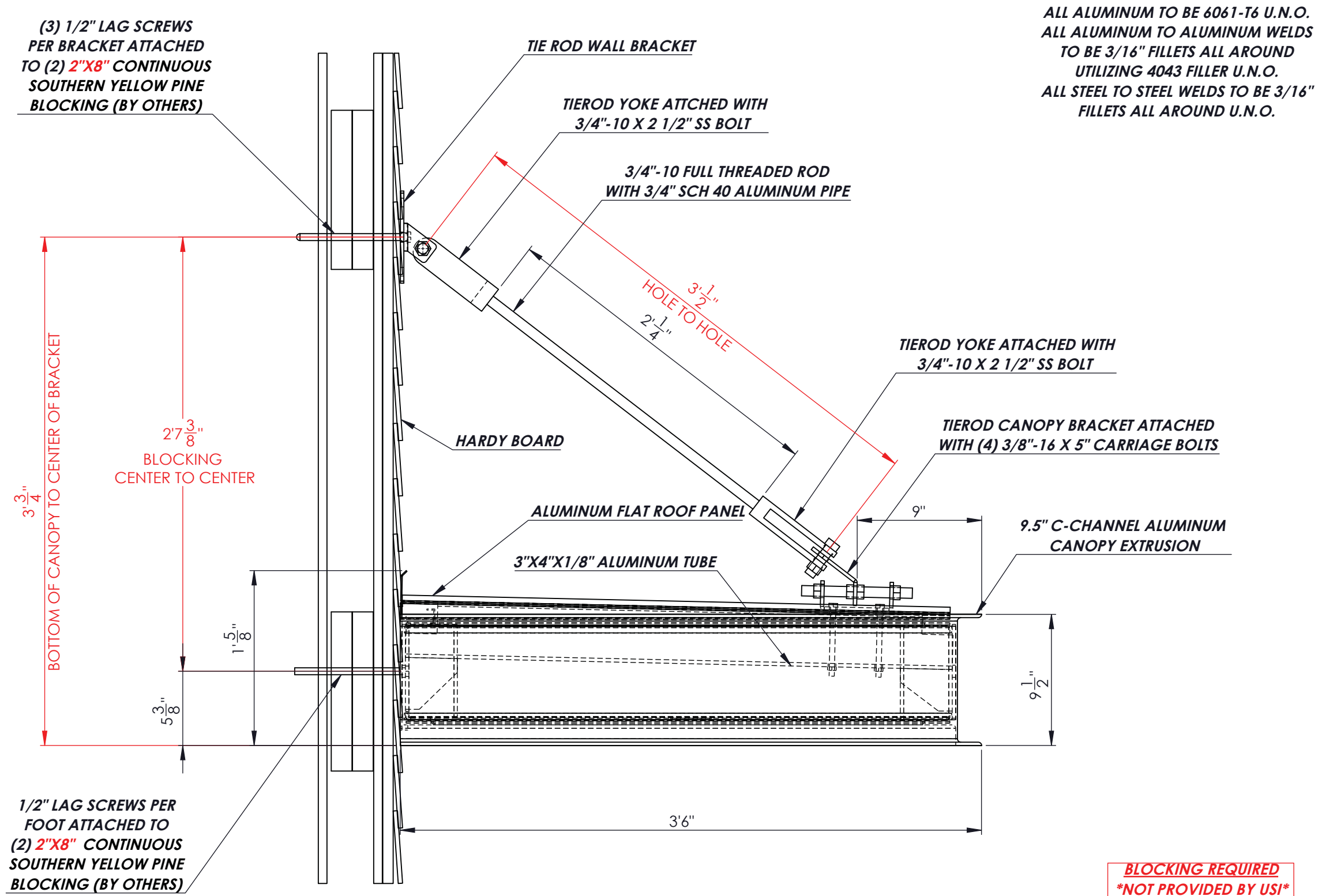


Uni-Structures, Inc.
The Drive-Thru Specialists
8540 COBB CENTER DR.
STE 100 KENNESAW, GA 30152
PHONE: (770)-499-2000
PHONE: (800)-386-9864

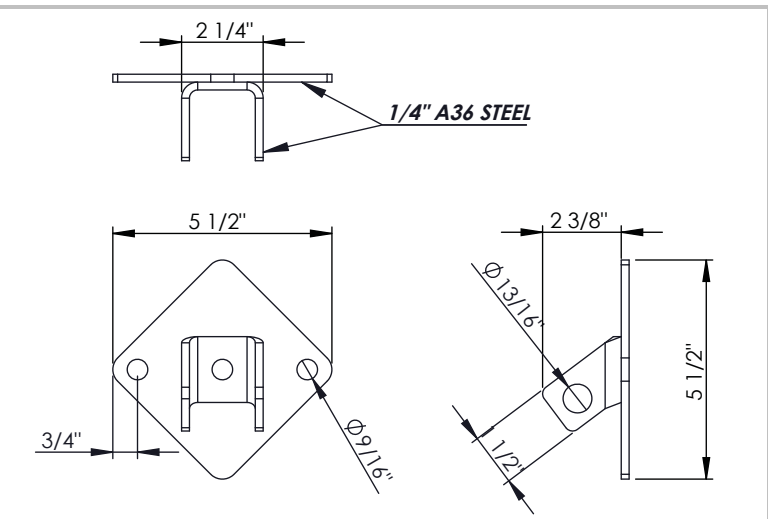
<i>CLIENT: DUNKIN</i>		<i>MADE IN THE USA</i>
<i>LOCATION: 411 Maple Avenue Vienna, VA 22180</i>		<i>DATE: 10/1/2025</i>
<i>SALES: S. FREYMAN</i>	<i>DESIGNER: C.JOCSON</i>	<i>DWG #: 26972</i>
<i>ASSEMBLY #:</i>		<i>STORE #: --</i>
<i>FILE:N:\Projects\Dunkin\Jobs\Vienna, VA (Maple Ave.)\CAD\</i>		

ENGINEERING STAMP

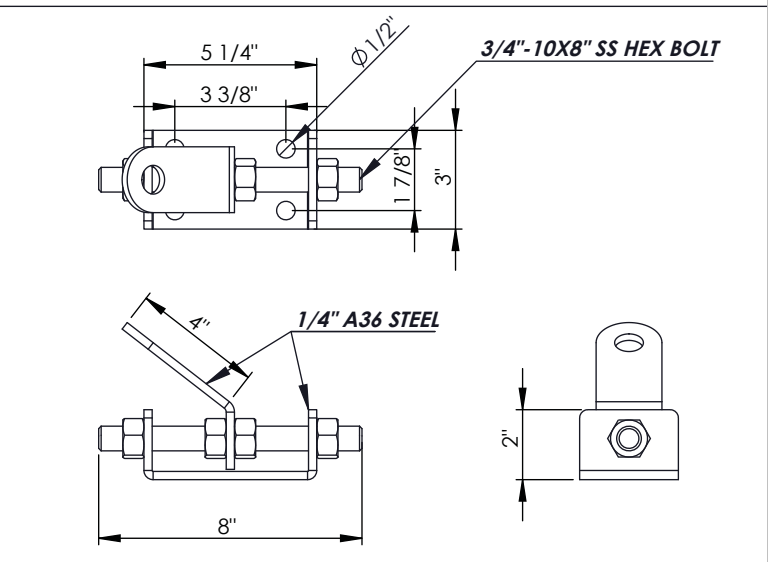
<i>PART #:</i>		
<i>DESCRIPTION:</i>		
<i>MATERIAL:</i>	<i>STATUS: P D</i>	
<i>THICKNESS: "</i>		
<i>WEIGHT: LBS</i>	<i>PAGE: 2</i>	<i>REV. 0</i>



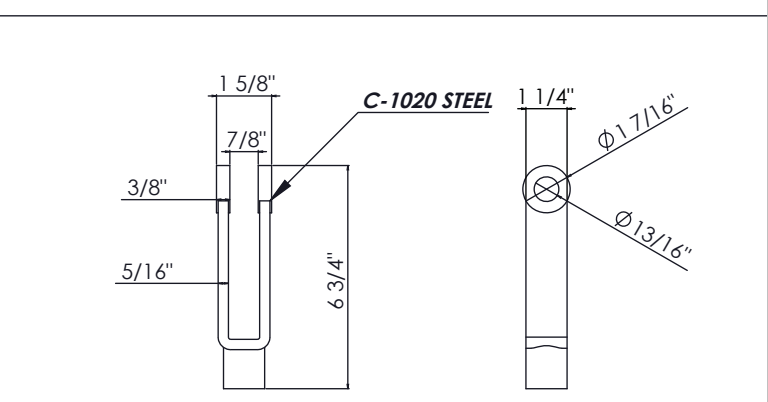
ALL ALUMINUM TO BE 6061-T6 U.N.O.
ALL ALUMINUM TO ALUMINUM WELDS
TO BE 3/16" FILLETS ALL AROUND
UTILIZING 4043 FILLER U.N.O.
ALL STEEL TO STEEL WELDS TO BE 3/16"
FILLETS ALL AROUND U.N.O.



WALL PLATE DETAIL



CANOPY BRACKET DETAIL



TIE ROD YOKE DETAIL

C1 CANOPY PROJECTION

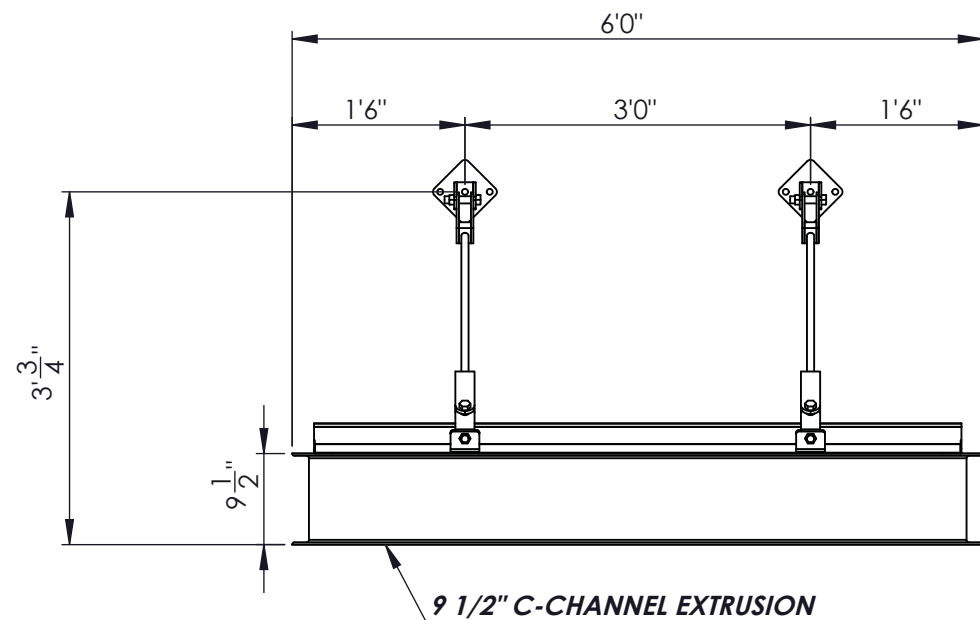
ENGINEERING STAMP

CANOPY SECTION VIEW SCALE = 1:8

Uni-Structures, Inc.
The Drive-Thru Specialists
8540 COBB CENTER DR.
STE 100 KENNESAW, GA 30152
PHONE: (770)-499-2000
PHONE: (800)-386-9864

CLIENT: DUNKIN		MADE IN THE USA	
LOCATION: 411 Maple Avenue Vienna, VA 22180		DATE: 10/1/2025	
SALES: S. FREYMAN	DESIGNER: C.JOCSON	DWG #: 26972	
ASSEMBLY #: 26972-C1-BCC9		STORE #: --	
FILE:N:\Projects\Dunkin\Jobs\Vienna, VA (Maple Ave.)\CAD\			

PART #: 26972-C1-BCC9		
DESCRIPTION: 9 1/2" C-CHANNEL CANOPY		
MATERIAL:	STATUS: P D	
THICKNESS: "		
WEIGHT: LBS	PAGE: 3	REV. 0

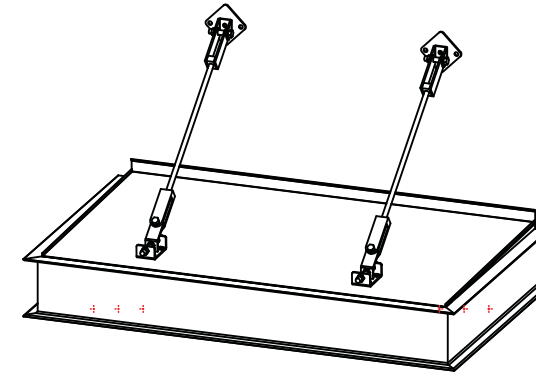


FRONT VIEW SCALE = 1:20

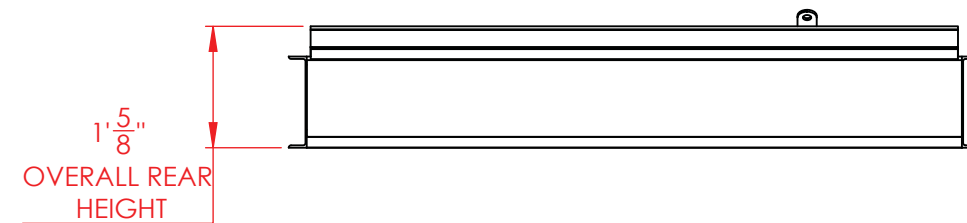
SOFFIT PANEL LENGTH: 37.63

ALL ALUMINUM TO BE 6061-T6 U.N.O.
ALL ALUMINUM TO ALUMINUM WELDS
TO BE 3/16" FILLETS ALL AROUND
UTILIZING 4043 FILLER U.N.O.
ALL STEEL TO STEEL WELDS TO BE 3/16"
FILLETS ALL AROUND U.N.O.

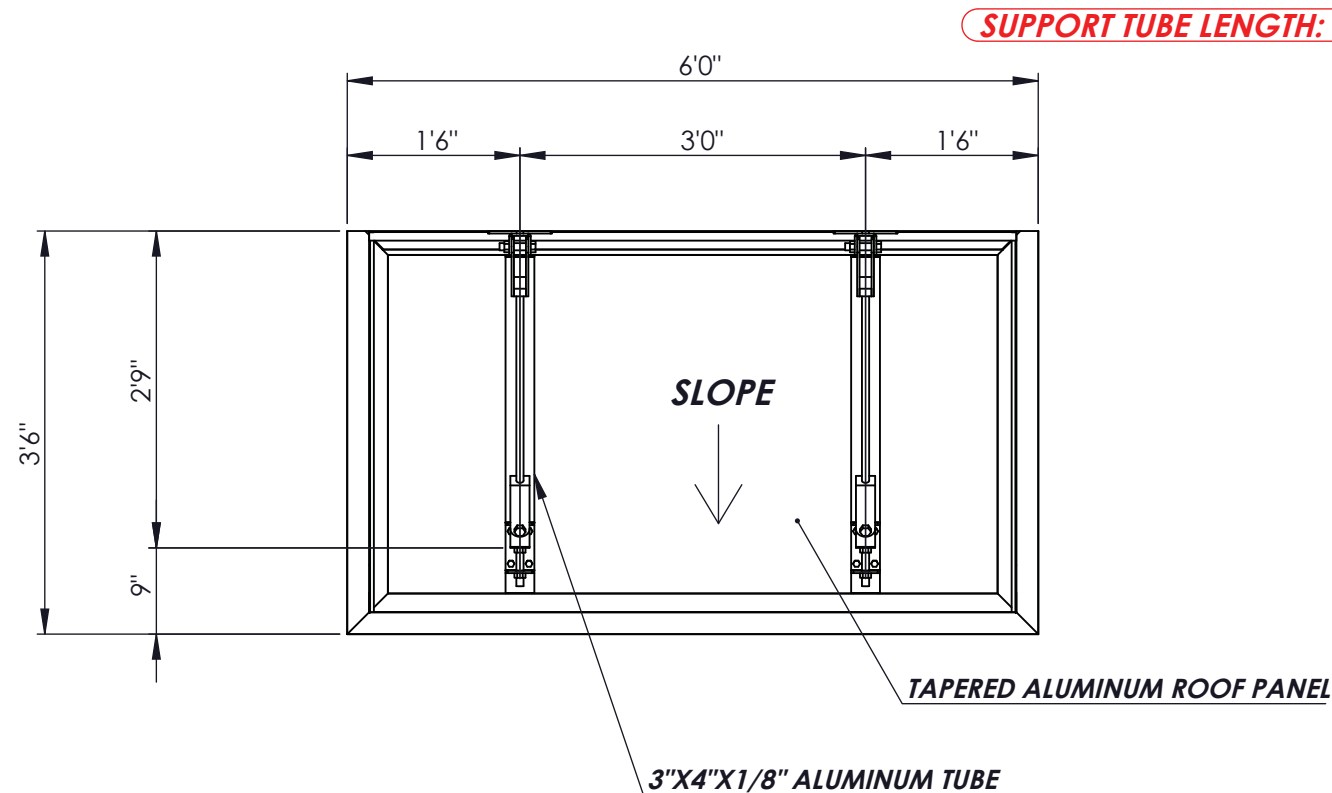
C1 CANOPY LAYOUT



ISOMETRIC VIEW SCALE = 1:20

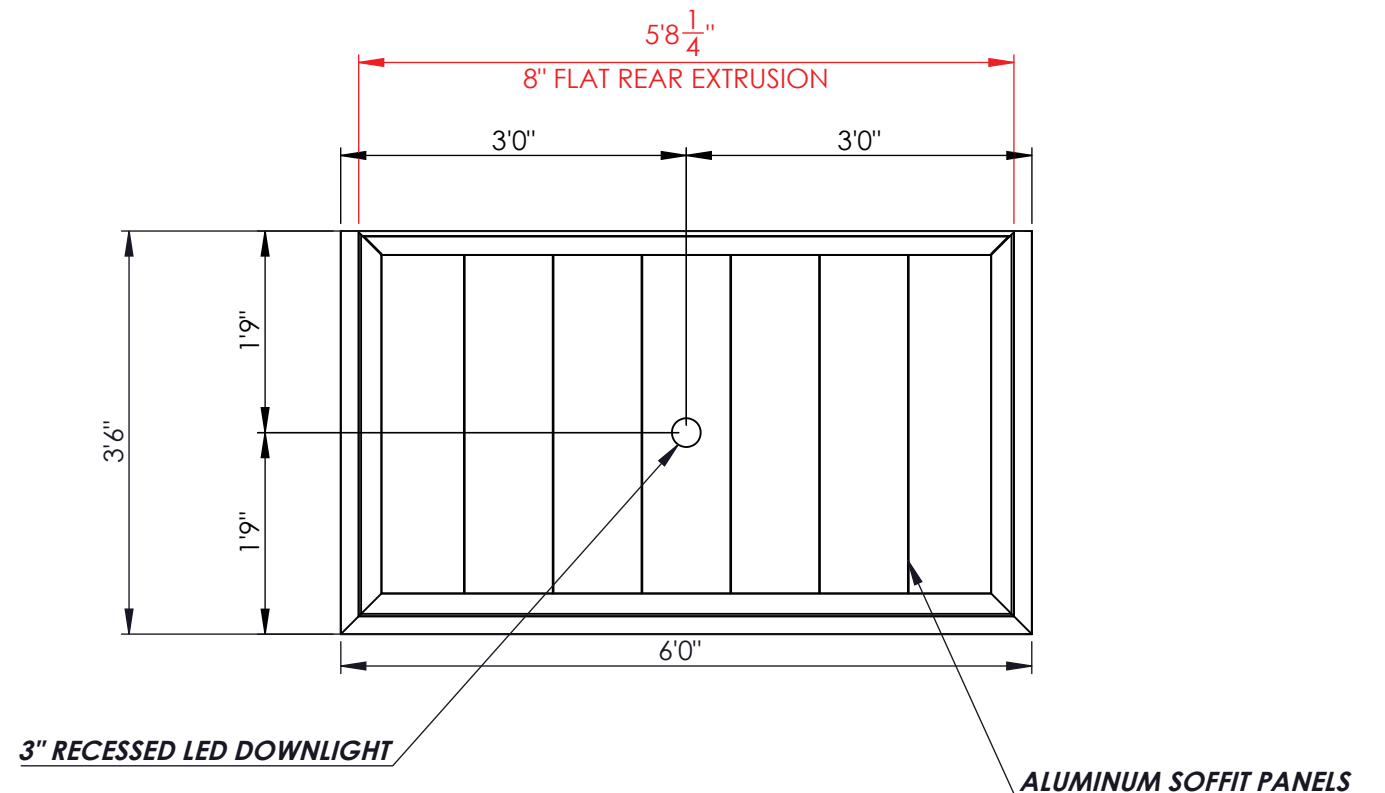


REAR VIEW SCALE = 1:20



TOP VIEW SCALE = 1:20

SUPPORT TUBE LENGTH: 39.38



BOTTOM VIEW SCALE = 1:20



Uni-Structures, Inc.
The Drive-Thru Specialists
8540 COBB CENTER DR.
STE 100 KENNESAW, GA 30152
PHONE: (770)-499-2000
PHONE: (800)-386-9864

CLIENT: **DUNKIN**

LOCATION: 411 Maple Avenue Vienna, VA 22180

SALES: S. FREYMAN

DESIGNER: C. JOCSON

ASSEMBLY #: 26972-C1-BCC9

FILE: N:\Projects\Dunkin\Jobs\Vienna, VA (Maple Ave.)\CAD\

MADE IN THE USA

DATE: 10/1/2025

DWG #: 26972

STORE #: --

ENGINEERING STAMP

PART #: 26972-C1-BCC9

DESCRIPTION: 9 1/2" C-CHANNEL CANOPY

MATERIAL:

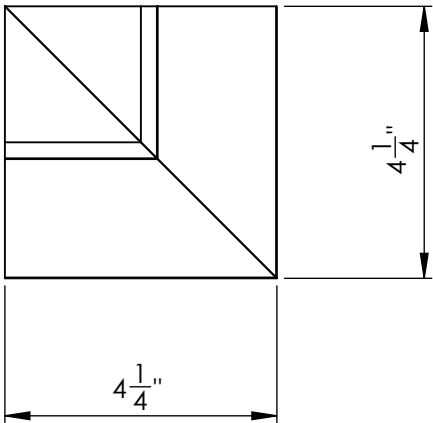
THICKNESS: "

WEIGHT: LBS

STATUS:
P D

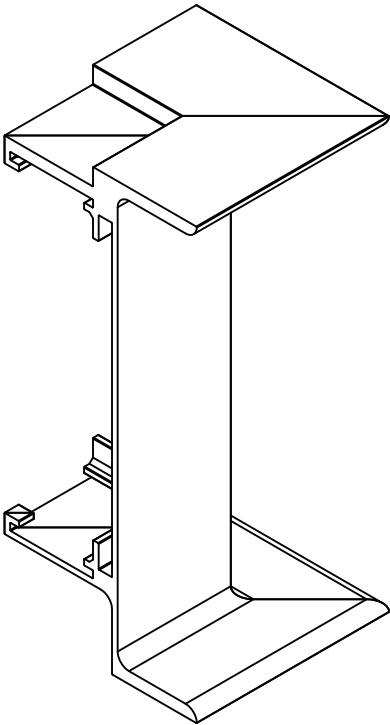
PAGE: 4

REV. 0

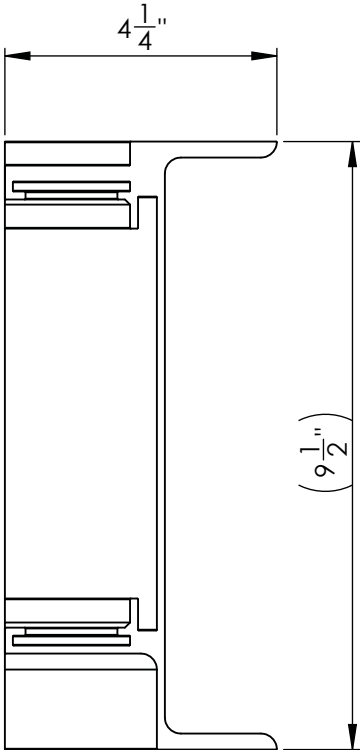


FRONT VIEW SCALE = 1:3

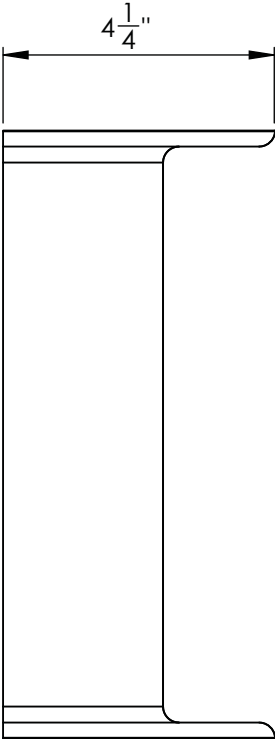
ALL ALUMINUM TO BE 6061-T6 U.N.O.
ALL ALUMINUM TO ALUMINUM WELDS
TO BE 3/16" FILLETS ALL AROUND
UTILIZING 4043 FILLER U.N.O.
ALL STEEL TO STEEL WELDS TO BE 3/16"
FILLETS ALL AROUND U.N.O.



ISOMETRIC VIEW SCALE = 1:3



BOTTOM VIEW SCALE = 1:3



Uni-Structures, Inc.
The Drive-Thru Specialists
8540 COBB CENTER DR.
STE 100 KENNESAW, GA 30152
PHONE: (770)-499-2000
PHONE: (800)-386-9864

CLIENT: **DUNKIN**

MADE IN THE USA

LOCATION: 411 Maple Avenue Vienna, VA 22180

DATE: 10/1/2025

SALES: S. FREYMAN

DESIGNER: C. JOCSON

DWG #: 26972

ASSEMBLY #: 26972-CORNERS

STORE #: --

FILE:N:\Projects\Dunkin\Jobs\Vienna, VA (Maple Ave.)\CAD\

ENGINEERING STAMP

PART #: 26972-CORNERS

DESCRIPTION: OUTSIDE CORNER

MATERIAL: 3003-H14

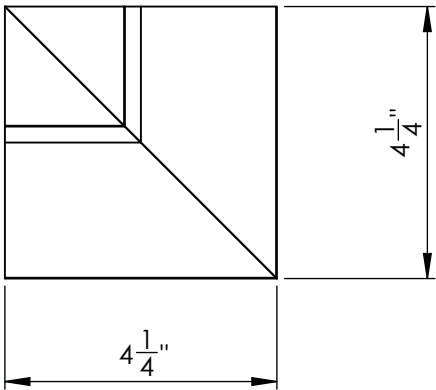
THICKNESS:

WEIGHT: 1.584 LBS

STATUS:
P D

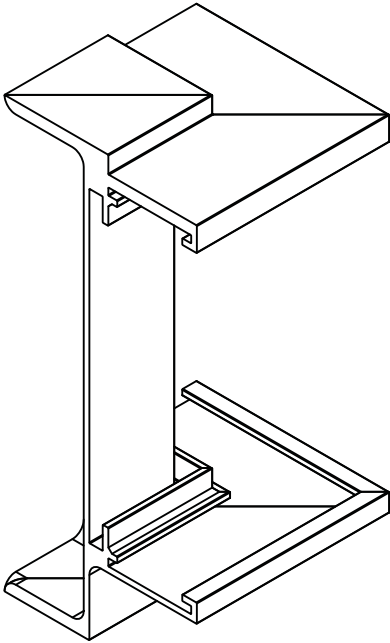
PAGE: 5

REV. 0

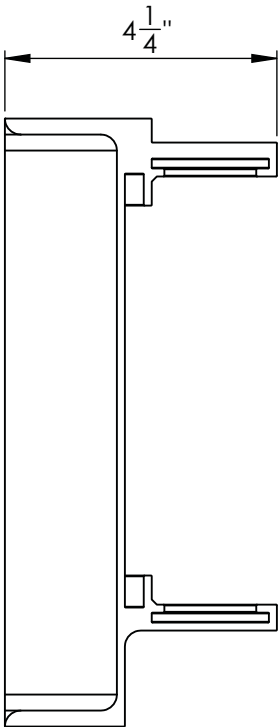


FRONT VIEW SCALE = 1:3

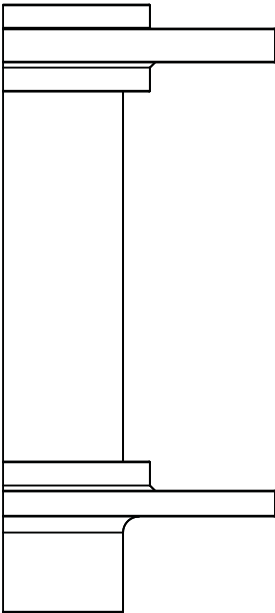
ALL ALUMINUM TO BE 6061-T6 U.N.O.
ALL ALUMINUM TO ALUMINUM WELDS
TO BE 3/16" FILLETS ALL AROUND
UTILIZING 4043 FILLER U.N.O.
ALL STEEL TO STEEL WELDS TO BE 3/16"
FILLETS ALL AROUND U.N.O.



ISOMETRIC VIEW SCALE = 1:3



BOTTOM VIEW SCALE = 1:3



Uni-Structures, Inc.
The Drive-Thru Specialists
8540 COBB CENTER DR.
STE 100 KENNESAW, GA 30152
PHONE: (770)-499-2000
PHONE: (800)-386-9864

CLIENT: **DUNKIN**

MADE IN THE USA

LOCATION: 411 Maple Avenue Vienna, VA 22180
SALES: S. FREYMAN DESIGNER: C. JOCSON
ASSEMBLY #: 26972-CORNERS

DATE: 10/1/2025
DWG #: 26972
STORE #: --

FILE:N:\Projects\Dunkin\Jobs\Vienna, VA (Maple Ave.)\CAD\

ENGINEERING STAMP

PART #: 26972-CORNERS

DESCRIPTION: INSIDE CORNER

MATERIAL: 3003-H14

THICKNESS:

WEIGHT: 1.451 LBS

STATUS:
P D

PAGE: 6

REV. 0