

* G.C. TO COORDINATE ROUGH OPENING WITH DOOR MANUFACTURER, MASONRY OPENING AND TRIM REQUIREMENTS



RUST | ORLING
ARCHITECTURE

1215 CAMERON STREET
ALEXANDRIA, VA
22314

T - 703.836.3205
F - 703.548.4779
admin@rustorling.com
www.rustorling.com

CADENCE AT PARK

VIENNA, VIRGINIA

20.014

REVISIONS

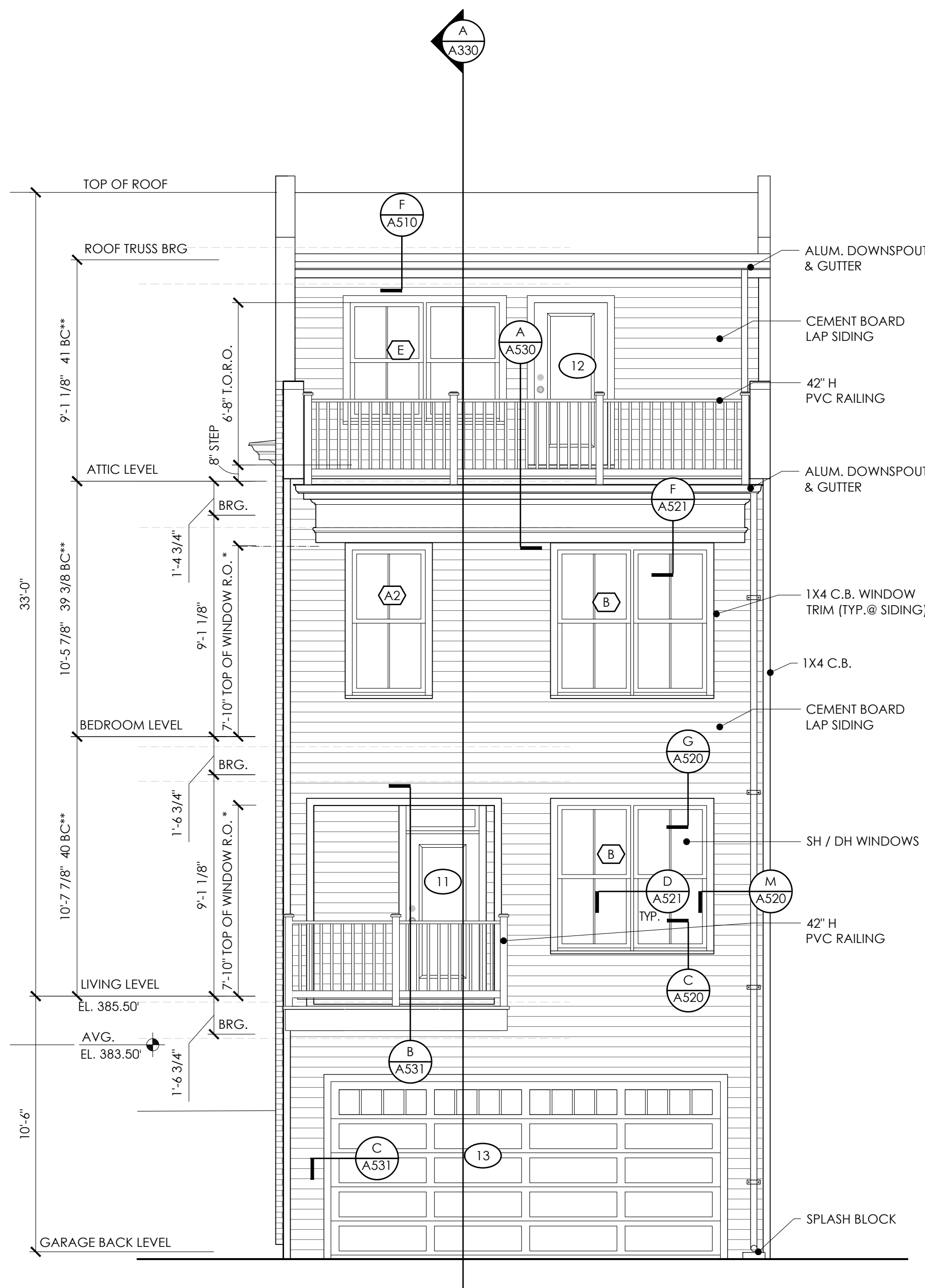
DATE	DESCRIPTION

FOR PERMIT
01.08.21

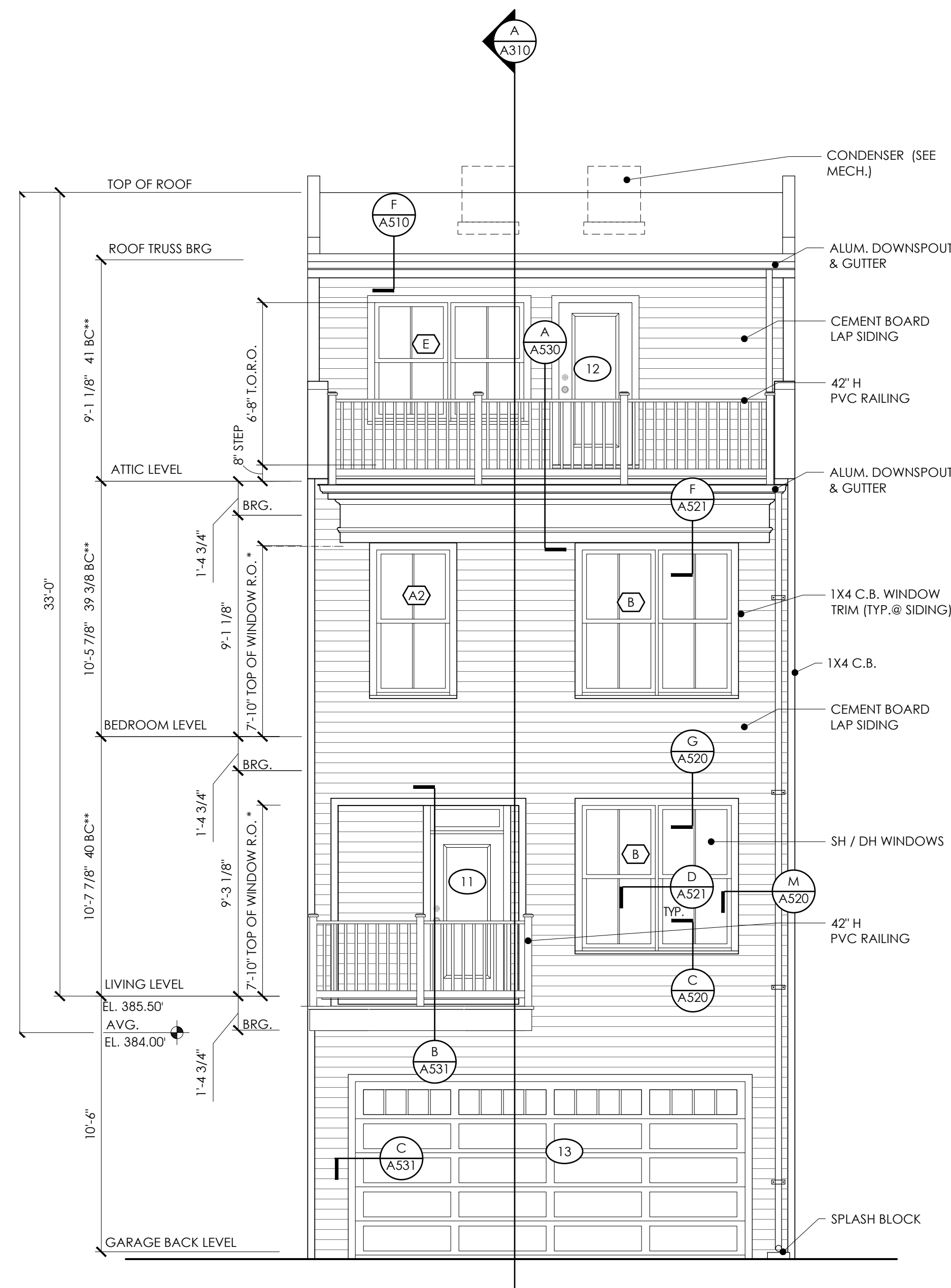
REAR
ELEVATIONS

SHEET NO.

A230



C UNIT REAR ELEVATION
1/4"=1'-0"



A & B UNIT REAR ELEVATION
1/4"=1'-0"