



# 56292 Architessa

Project Location: 172 Maple Ave W Vienna VA 22180 | Contact: David Benson | Phone: 703.714.0616

## Architectural Ceramics

800 East Gude Drive Suite F Rockville MD 20850

Submittal Date: 12.14.20 | Revision (1): 12.15.20

QTY.	SIGN TYPE	DESCRIPTION	INSTALL METHOD
1	CL.1	Channel Letters	Mechanically Fastened

Customer Approval / Date:

Production Approval / Date:



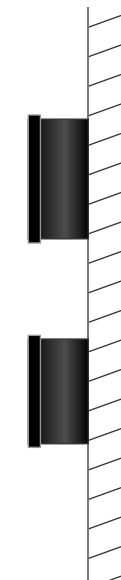
4" DEEP FRONT LIT CHANNEL LETTERS WITH BLACK PERFORATED DAY/NIGHT VINYL APPLIED TO 3/16" TRANS. ACRYLIC FACES, 1" BLACK TRIM AND PAINTED BLACK ALUMINUM RETURNS

FONT: TRAJAN



(QTY: 1) 40-1/2"x169" CHANNEL LETTERS

SCALE: 1/2"=1'-0"



SIDE VIEW



6511 Chillum Place, NW  
Washington, D.C. 20012  
202.882.7733 phone  
202.882.1580 fax  
gelbergsigns.com

All Components Listed

This sign is intended to be installed in accordance with the requirements of Article 600 of the National Electrical Code and/or other applicable local codes. This includes proper grounding and bonding of the sign.

This design concept is the property of GELBERG SIGNS, INC and cannot be copied duplicated or manufactured in whole or part without written consent of GELBERG SIGNS, INC.

**Architectural Ceramics**

**Architessa Channel Letters**

172 Maple Ave W.  
Vienna VA 22180

No. **56292**

Submittal Date: **12.14.20**

Revision 1: 12.15.20

Designer: MB

Sales Rep.: GB

Project Manager: XX

Sign Type:

**CL.1**

p. **2**

**Client's signature**  
required for approval prior to fabrication.

**Date:**

ALL EQUIPMENT, EXCEPT REMOTE METAL PARTS SUPPLIED BY A REMOTE CLASS 2 POWER SUPPLY, MUST BE GROUNDED ACCORDING TO NEC 600.7 AND ARTICLE 250 (UL48~4.2.4.1.1)

THE EQUIPMENT GROUNDING CONDUCTOR SHALL BE SIZED IN ACCORDANCE TO NEC ARTICLE 250.122, BASED UPON THE SIZE OF THE OVERCURRENT DEVICE. NEC ARTICLE 600.7 (A)(2) BONDING CONDUCTORS SHALL NOT BE SMALLER THAN 14AWG NEC 600(B)(7) (UL48~4.2.4.3.3.1)

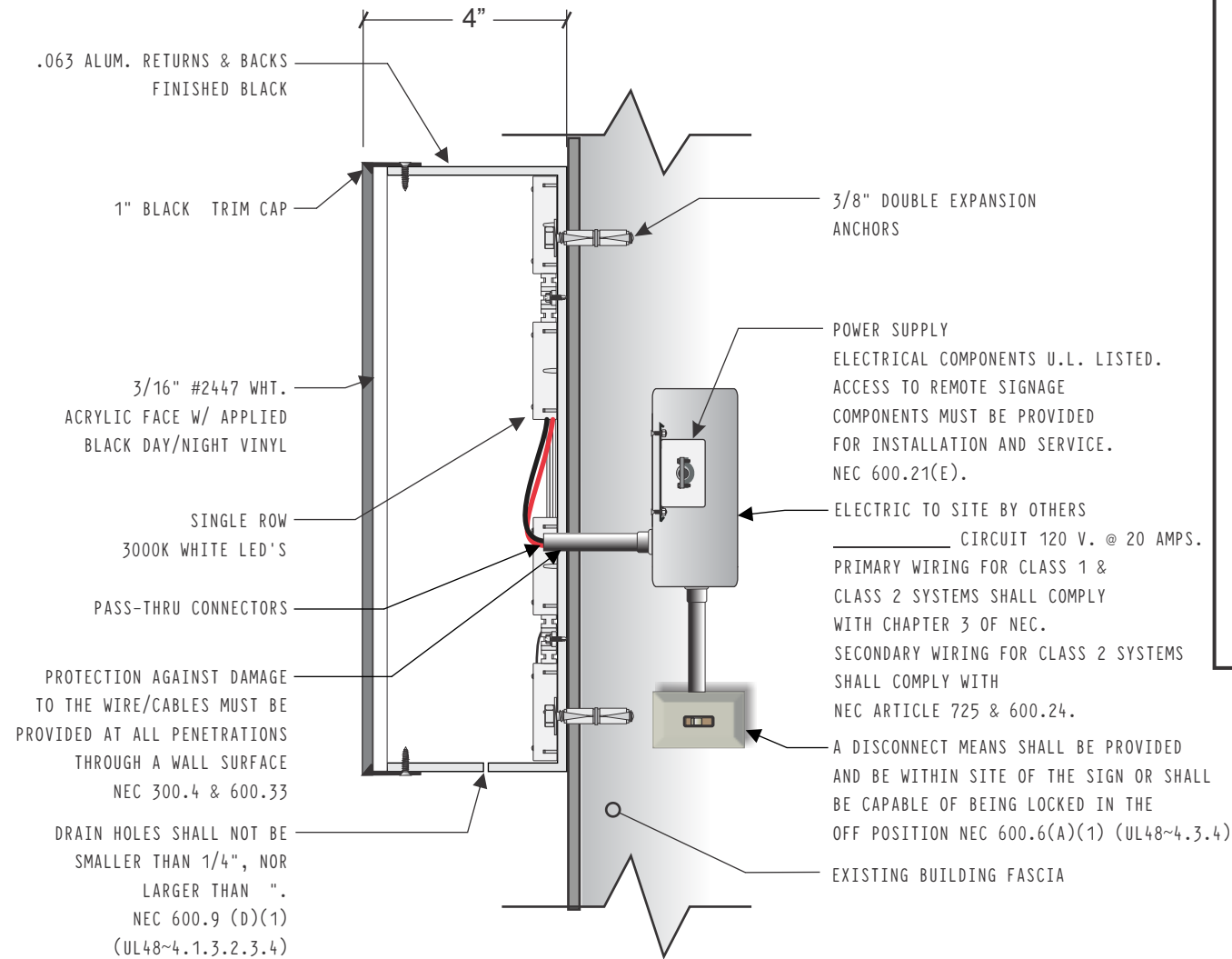
**INSTRUCTIONS FOR LED SECONDARY WIRING**  
 NEC 600.33-LISTED CLASS 2 WIRE SIZED ACCORDING TO TABLE 725.154(G) AND SHALL NOT BE SMALLER THAN 18 AWG. THE WIRE/CABLE MUST BE INSTALLED IN A NEAT & WORKMANSHIP MANNER AND SUPPORTED AT 6 FOOT INTERVALS AS SHOWN IN TABLE 4.5 OF THE UL 48 STANDARDS. THE WIRE/CABLE SHALL BE INSTALLED SO AS TO NOT DAMAGE THE CABLE. MAX LENGTH OF WIRE IS 10' UNLESS CONSIDERATIONS FOR VOLTAGE DROP POTENTIALS HAVE BEEN EVALUATED. CONNECTIONS MADE ON A WALL SURFACE SHALL BE ENCLOSED IN A LISTED BOX. SUPPORT FOR THE WIRE/CABLE AT SUCH BOX SHALL BE WITHIN 3 INCHES OF THE BOX.

**LED Channel Letter Installation Instructions**

- 1) USE PROVIDED PATTERN TO DRILL ALL ELECTRIC AND MOUNTING HOLES.
- 2) ATTACH U.L. LISTED PASS-THRU'S TO PROTECT CL2P WIRE FROM DAMAGE
- 3) ATTACH INDIVIDUAL LETTERS TO WALL USING HARDWARE APPROPRIATE TO THE FIELD CONDITIONS.
- 4) SEAL ALL COMPONENTS TO WALL WITH SILICONE SEALANT.
- 5) INSTALL POWER SUPPLY VAULT(S) BEHIND WALL SURFACE USING HARDWARE APPROPRIATE TO THE FIELD CONDITIONS.
- 6) USING ATTACHED WIRING DIAGRAM BRING THE WIRE LEADS TO THE APPROPRIATE POWER SUPPLY VAULT. PASS WIRES THROUGH PLASTIC BUSHING ON VAULT AND APPLY A STRAIN RELIEF KNOT IN WIRES. ALL SECONDARY SPICES MUST BE WITHIN A BOX OR ENCLOSURE
- 7) MAKE ALL SECONDARY CONNECTIONS BASED UPON COLOR CODE SHOWN ON VAULT COVER. SECURE ALL SECONDARY CABLE 3" FROM ENCLOSURE AND AT 6' INTERVALS
- 8) INSTALL DISCONNECT SWITCH AS PERMITTED BY FIELD CONDITIONS
- 9) CONNECT EXISTING CIRCUIT(S) TO DISCONNECT SWITCH & POWER SUPPLY VAULT(S) USING COLOR CODE SHOWN ON VAULT COVER. SECURE ALL PRIMARY CONDUIT/CABLE ACCORDING TO NEC CODE
- 10) INSTALL FACES, IF APPLICABLE. TURN ON CIRCUIT TO VERIFY ALL COMPONENTS ARE FULLY ILLUMINATED.

QWIK MOD1 LEDs PROVIDE 47.2 LM/MOD. THE SIGN WILL REQUIRE A TOTAL OF 148 MODULES FOR A TOTAL OF 6985 TOTAL LUMENS.

6985 LUMENS / 8 SQ FT = 873.2 LM/SQFT  
 873.2 / 6 (AMOUNT OF LIGHT REDUCTION CAUSED BY PERFORATED OPAQUE VINYL ON FACE) = 145.5 LUMENS



**SECTION THRU @ CHANNEL LETTERS**

SCALE: NTS

NOTE: FOR USE IN WET LOCATION

**Qwik Mod™ Series**

Better coverage with a wider optic — accomplish more with our NEW Qwik Mod™ Series.

**SPECIFICATIONS**

Beam Angle	170° Ultra-Wide Low Dome Batwing Optic, Diamondback Optic Lens Technology
Certifications	UL & cUL Recognized (SAM Manual), CE, RoHS
Dimensions	QM1: 0.69"W x 1.4"L x 0.25"H QM2: 0.69"W x 2.2"L x 0.25"H QM3: 0.69"W x 3.14"L x 0.25"H QM4: 1.7"W x 1.77"L x 0.25"H
Fastening	Peel & Stick / Mechanical Screw Hole
Input	12VDC
Operating Temp	-22° to +140°F (-30° to +60°C)
Packaging	QM1: 150 mods (60 ft) per bag or 1500 mods (600 ft) per case QM2: 76 mods (44.7 ft) per bag or 912 mods (536.52 ft) per case QM3: 50 mods (33.3 ft) per bag or 750 mods (500 ft) per case QM4: 38 mods (25.3 ft) per bag or 912 mods (608 ft) per case
Power Supply	P-LED 12VDC
Protection Grade	IP68
Spacing	QM1: 2.5 mods/ft. fully stretched QM2: 1.7 mods/ft. fully stretched QM3 and QM4: 1.5 mods/ft. fully stretched
Warranty	10-Year Product / 5-Year Limited Labor



**FEATURES**

- Diamondback 170° Optic Lens
- Integrated aluminum heat sink
- Waterproof IP68
- Snap & Peel Qwik Release Tab
- Four different mod styles to perform in a wide variety of sign applications
- **Multidiffusion** with a wider batwing resulting in better coverage

**WIRING DETAILS**

White Solid	Positive
White/Black Stripe	Negative

Check module for polarity.

**PRODUCT OPTIONS**

Product	Color	CCT/Wavelength	Efficacy	Intensity	Max Mods (Series)	UL Part Number	Ordering Part Number
QM1	White	3000K-7100K	118 LM/W	47.2 LM/mod (118 LM/ft.)	75 mods (30 ft.)	PL-QM1-TW110-P	M-QMSX0-71
QM2	White	3000K-7100K	118 LM/W	94.1 LM/mod (160 LM/ft.)	38 mods (22.35 ft.)	PL-QM2-TW150-P	M-QMDX0-71
QM3	White	4000K-7100K	114 LM/W	136.7 LM/mod (205 LM/ft.)	25 mods (16.67 ft.)	PL-QM3-TW200-P	M-QMTX0-71
QM4	White	4000K-7100K	113 LM/W	180 LM/mod (270 LM/ft.)	19 mods (12.67 ft.)	PL-QM4-TW260-P	M-QMQX0-71

**POWER SUPPLY OPTIONS**

Power Supply	60W			36W		20W		12W	
	Watts/Mod	W/Meter	Max Mods	Watts/Mod	Max Mods	Watts/Mod	Max Mods	Watts/Mod	Max Mods
QM1	0.4	3.28	150	0.41	87	0.42	47	0.44	27
QM2	0.8	4.46	76	0.81	44	0.84	23	0.88	13
QM3	1.2	5.9	50	1.22	29	1.26	15	1.32	9
QM4	1.6	7.87	38	1.62	22	1.68	11	1.76	6

Watts per mod may vary depending on run footage.



**PART**

UL Part Number	Ordering Part Number
PL-60-12-U	P-OH060-12-PL

**PERFORMANCE**

Input Voltage	100~277 VAC
Input Current	1.1A~0.45A
Input Frequency	47~63Hz
Power Factor	Normal
Output Voltage	DC12V ±3%
Output Current	0-5.0A
Output Power	60W Max.

**SAFETY**

Over Current Protection	110~120%
Short Circuit Protection	Hiccup mode, auto recover
Other Protection	Over Voltage/Over Load/Short Circuit
UL	UL879 / UL8750 CSA C22.2 NO. 207-M89
CE-LVD	EN61347-1:2008+A1:2011+A2:2013 EN61347-2-13:2014



6511 Chillum Place, NW  
 Washington, D.C. 20012  
 202.882.7733 phone  
 202.882.1580 fax  
 gelbergsigns.com

All Components Listed  
 This sign is intended to be installed in accordance with the requirements of Article 600 of the National Electrical Code and/or other applicable local codes. This includes proper grounding and bonding of the sign.  
 This design concept is the property of GELBERG SIGNS, INC and cannot be copied, duplicated or manufactured in whole or part without written consent of GELBERG SIGNS, INC.

**Architectural Ceramics**

**Architessa Channel Letters**

172 Maple Ave W.  
 Vienna VA 22180

No. 56292

Submission Date: 12.14.20

Revision 1: 12.15.20

Designer: MB

Sales Rep.: GB

Project Manager: XX

Sign Type:

CL.1

p. 3

Client's signature required for approval prior to fabrication.

Date:

**Architectural  
 Ceramics**

**Architessa  
 Channel Letters**

172 Maple Ave W.  
 Vienna VA 22180

**No. 56292**

Submittal Date: **12.14.20**

Revision 1: 12.15.20

Designer: MB

Sales Rep.: GB

Project Manager: XX

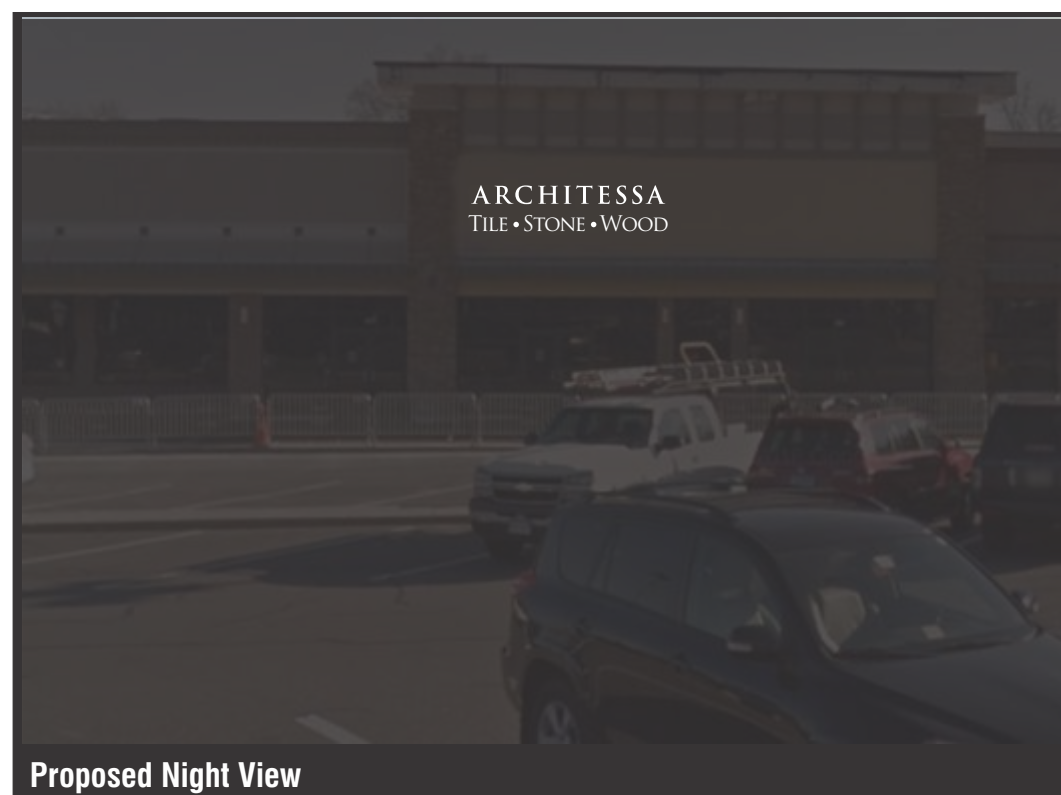
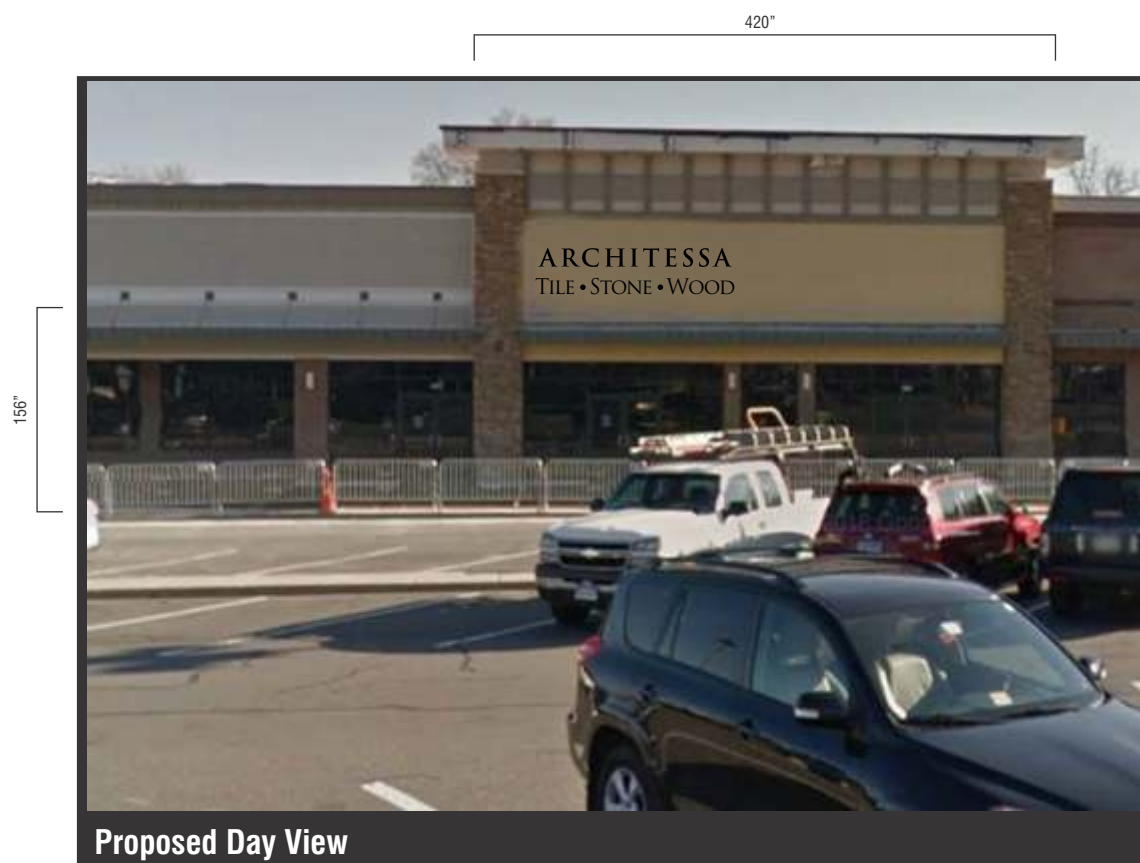
Sign Type:

**CL.1**

p. **4**

**Client's signature**  
 required for approval prior  
 to fabrication.

**Date:**



RENDERING @ FRONT ELEVATION

SCALE: 1/4"=1'-0"