

Job Name: \_\_\_\_\_ Date: \_\_\_\_\_

System Reference: \_\_\_\_\_



Indoor Unit: MSZ-GL18NA-U1



Wireless Remote Controller



Outdoor Unit: MUZ-GL18NA-U1

### ACCESSORIES:

#### Indoor Unit

- Condensate Pump (BlueDiamond X87-711/721; 115/230V)
- Condensate Pump (Sauermann SI30-115/230; 115/230V)
- Anti-Allergy Enzyme Filter (MAC-408FT-E)
- Drain Pan Level Sensor (DPLS2)

#### Outdoor Unit

- Outdoor Mounting Pad (ULTRILITE1)
- Drain Pan Heater (MAC-642BH-U)
- 3-1/4" Mounting Base [Pair] (DSD-400P)
- Drain Pan Socket (MAC-851DS)
- Air Outlet Guide (MAC-886SG-E)
- Wall Mounting Bracket (QSWB2000M-1)

#### Controls

- Wireless Controller (MHK1)
- Wired Remote Controller PAR-32MAA (Requires MAC-333IF-E)
- Wireless Interface for kumo cloud™ (PAC-USWHS002-WF-1)
- Thermostat Interface (PAC-US444CN-1)

### SPECIFICATIONS:

#### Rated Conditions (Capacity / Input)

Cooling <sup>1</sup>	Btu/h / W	18,000 / 1,340
Heating at 47° F <sup>2</sup>	Btu/h / W	21,600 / 1,680

Capacity Range		Minimum	Maximum
Cooling <sup>1</sup>	Btu/h	5,800	22,000
Heating at 47° F <sup>2</sup>	Btu/h	5,400	25,000
Heating at 17° F <sup>3</sup>	Btu/h	-	18,200
Heating at 5° F <sup>4</sup>	Btu/h	-	14,500

<sup>1</sup> Cooling | Indoor: 80° F (27° C) DB / 67° F (19° C) WB; Outdoor: 95° F (35° C) DB / 75° F (24° C) WB  
<sup>2</sup> Heating at 47° F | Indoor: 70° F (21° C) DB / 60° F (16° C) WB; Outdoor: 47° F (8° C) DB / 43° F (6° C) WB  
<sup>3</sup> Heating at 17° F | Indoor: 70° F (21° C) DB / 60° F (16° C) WB; Outdoor: 17° F (-8° C) DB / 15° F (-9° C) WB  
<sup>4</sup> Heating at 5° F | Indoor: 70° F (21° C) DB / 60° F (16° C) WB; Outdoor: 5° F (-15° C) DB / 5° F (-15° C) WB  
 \* Rating Conditions per AHRI Standard:

#### Operating Conditions (Indoor Intake Air Temp.) (Max./ Min.)

Cooling <sup>2s</sup>	90° F (32° C) DB / 67° F (19° C) DB
Heating	80° F (27° C) DB / 70° F (21° C) DB

#### Operating Conditions (Outdoor Intake Air Temp.) (Max./ Min.)

Cooling <sup>5</sup>	115 F (46° C) DB / 14° F (-10° C) DB
Heating	75° F (24° C) DB / -4° F (-20° C) DB**

<sup>5</sup> Applications should be restricted to comfort cooling only; equipment cooling applications are not recommended for low ambient temperature conditions.  
 \*\* System cuts out at -9° F (-27° C) to avoid thermistor error and automatically restarts at -4° F (-20° C).

#### AHRI Efficiency Ratings

SEER / HSPF	20.5 / 11.2
COP at 47° F / 17° F	3.77 / 2.73

#### Energy Star®

Yes

ENERGY STAR products are third-party certified by an EPA-recognized Certification Body. Specifications are subject to change without notice.

Electrical Power Requirements	208 / 230V, 1-Phase, 60 Hz
-------------------------------	----------------------------

#### Minimum Circuit Ampacity (MCA)

Indoor / Outdoor	A	1 / 14
------------------	---	--------

#### Indoor Unit

Blower Motor (ECM)	F.L.A.	0.67
Blower Motor Output	W	30
SHF / Moisture Removal		0.87 / 2.1 pt./h
Field Drainpipe Size O.D.	In.(mm)	5/8 (15)

#### Outdoor Unit

Compressor	DC INVERTER-driven Twin Rotary	
Fan Motor (ECM)	F.L.A.	0.93

#### Airflow Rate (Quiet - Lo - Med - Hi - Super Hi)

Indoor (Cooling)	DRY	CFM	259-333-416-523-646
	WET		233-300-375-470-581
Indoor (Heating)	DRY		296-384-469-563-646
			1,691 / 1,691
Outdoor			1,691 / 1,691

#### Sound Pressure Level (Quiet - Lo - Med - Hi - Super Hi)

Indoor	Cooling	dB(A)	28-33-38-44-49
	Heating		28-33-38-43-48
Outdoor	Cooling		54
	Heating		55

#### External Dimensions

Indoor (H x W x D)	In.(mm)	12 x 36-5/16 x 9-13/16 (305 x 923 x 250)
Outdoor (H x W x D)		34-5/8 x 33-1/16 x 13 (880 x 840 x 330)

#### Net Weight

Indoor	Lbs.(kg)	28 (13)
Outdoor		121 (55)

#### External Finish

Indoor	Munsell 1.0Y 9.2 / 0.2
Outdoor	Munsell No. 3Y 7.8 / 1.1

#### Refrigerant

R410A; 3 lb. 9 oz.

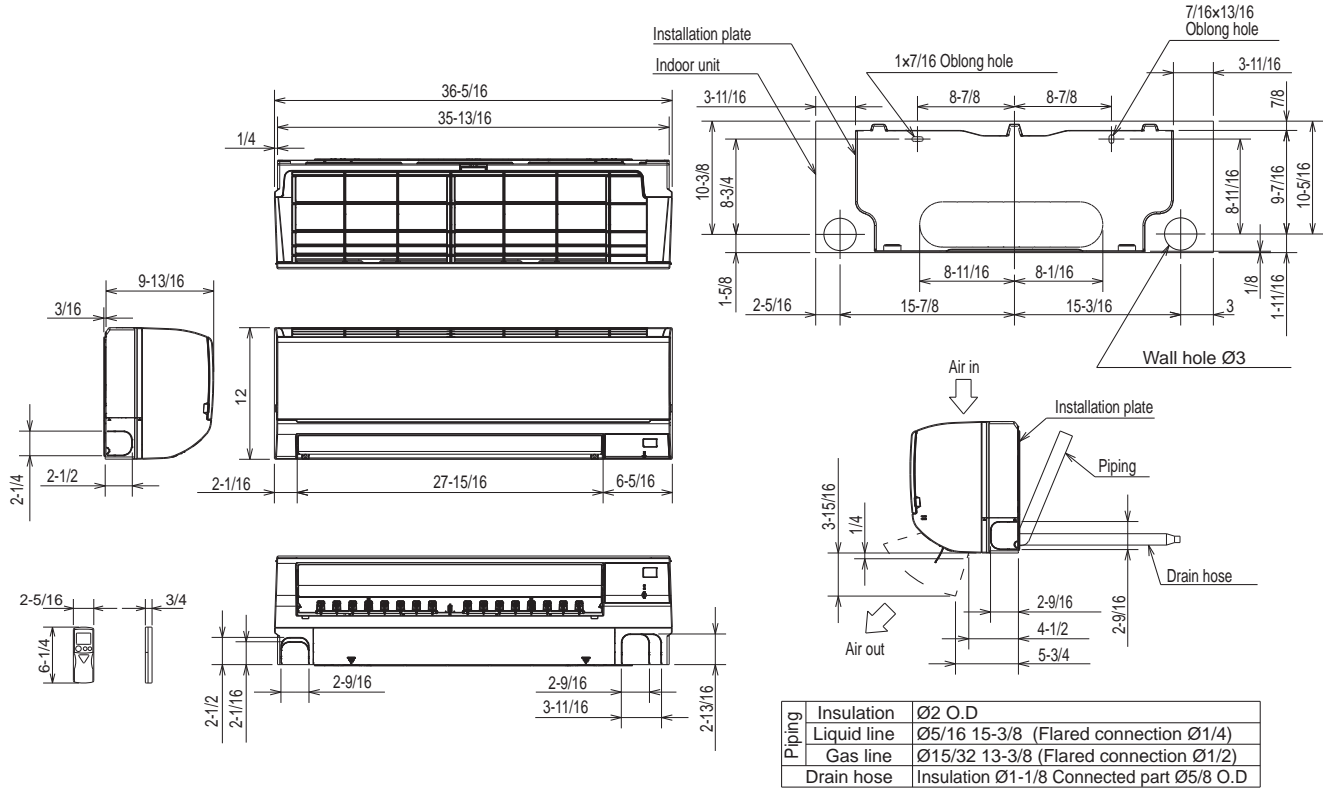
#### Refrigerant Piping (Flared)

Liquid (High Pressure)	In.(mm)	1/4 (6.35)
Gas (Low Pressure)		1/2 (12.7)
Max. Total Refrigerant Pipe Length (Height Diff.)	Ft. (m)	50 (15)
Max. Total Refrigerant Pipe Length (Length.)		100 (30)

# DIMENSIONS: MSZ-GL18NA-U1 & MUZ-GL18NA-U1

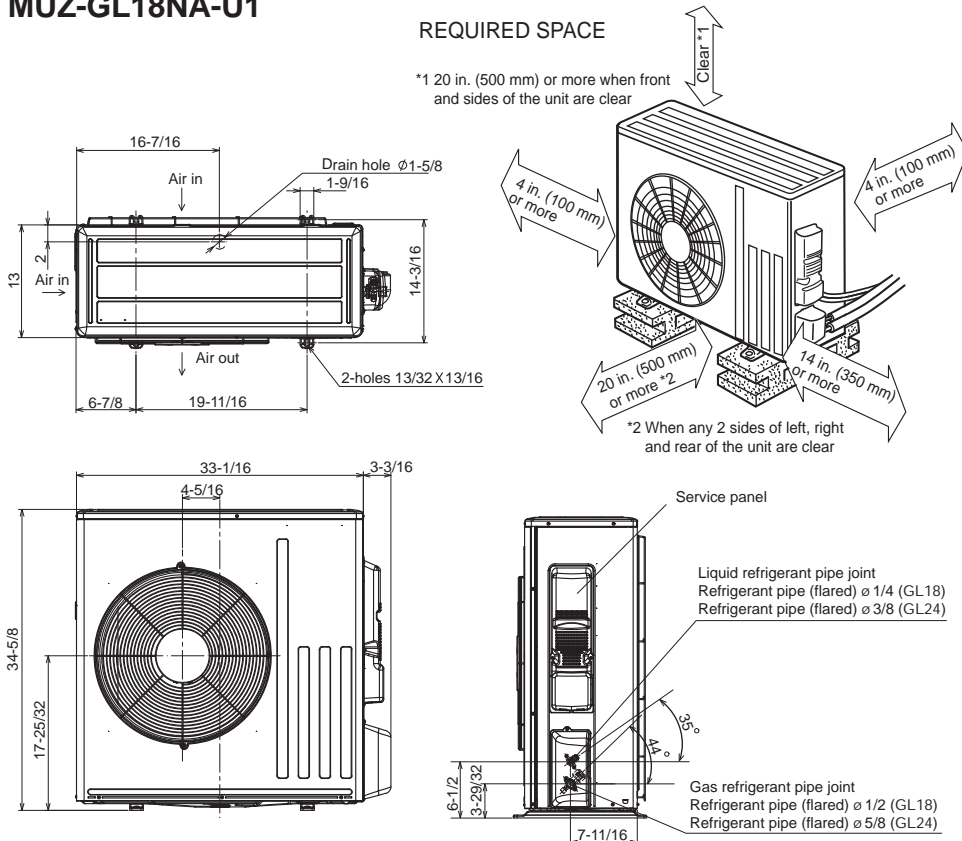
## MSZ-GL18NA-U1

Unit: in. (mm)



## MUZ-GL18NA-U1

Unit: in. (mm)



COOLING & HEATING

1340 Satellite Boulevard, Suwanee, GA 30024  
Toll Free: 800-433-4822 www.mehvac.com

