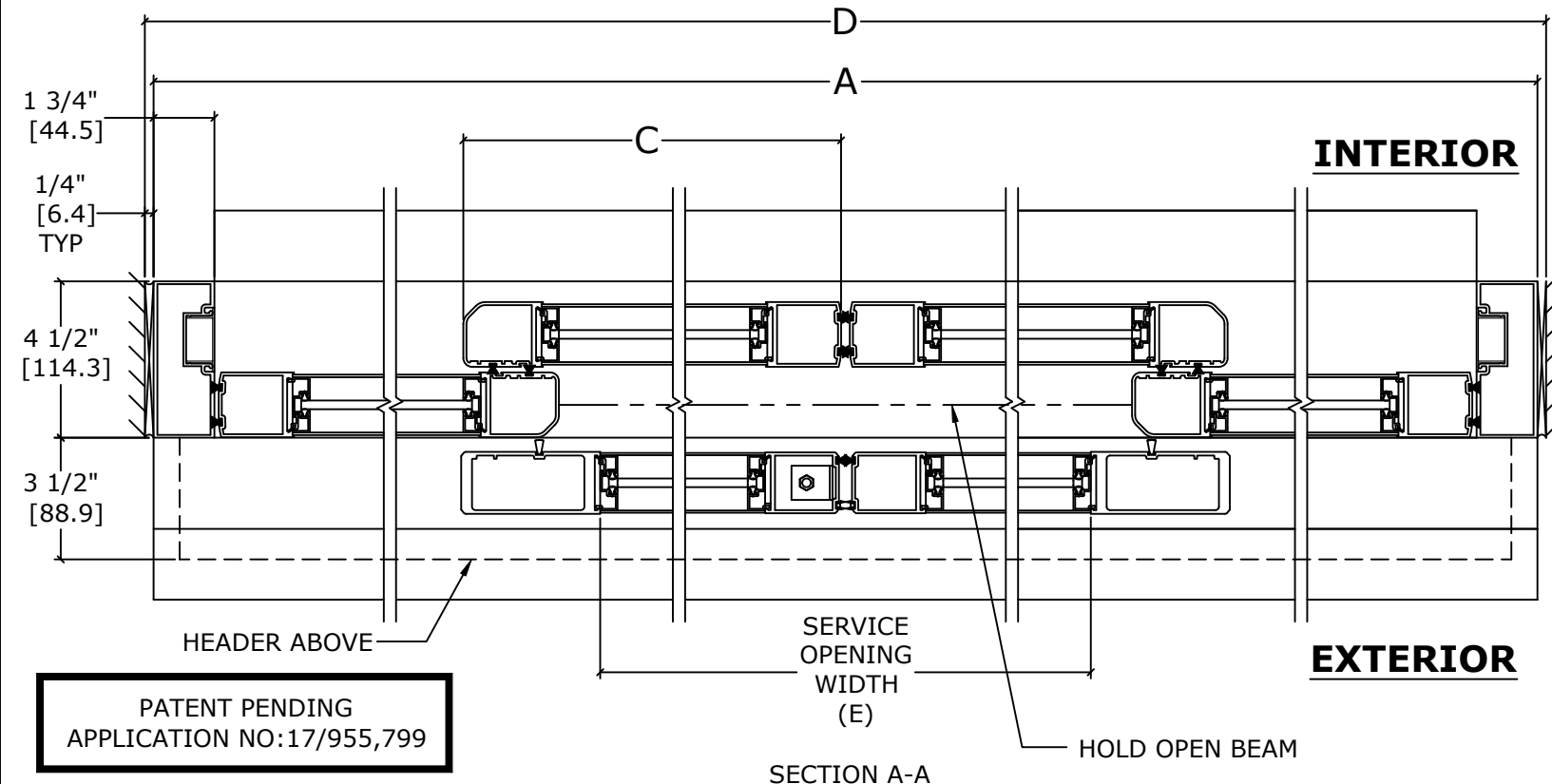
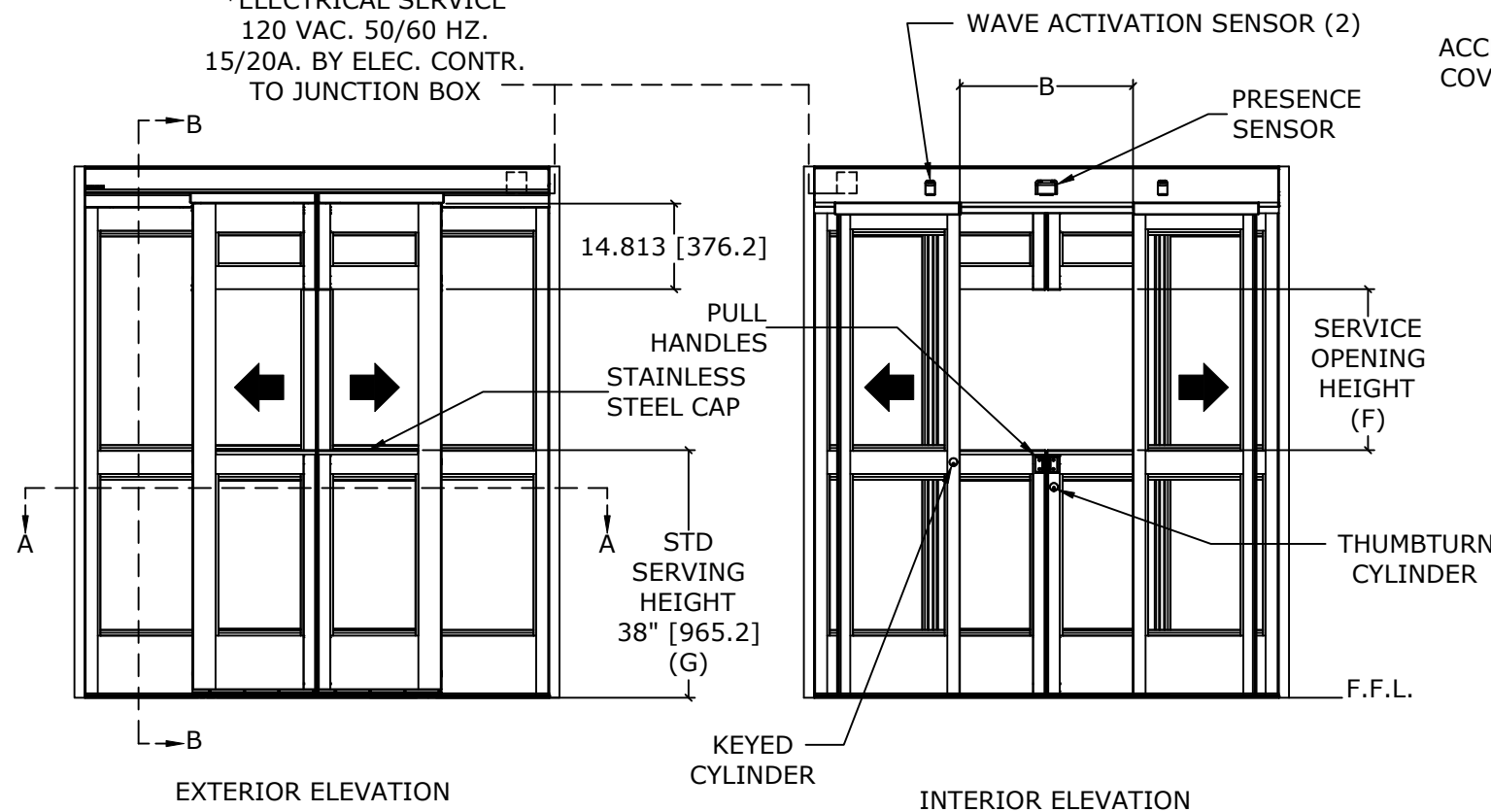


ASSA ABLOY

ASSA ABLOY ENTRANCE SYSTEMS
1900 AIRPORT ROAD
MONROE, NC 28110
PHONE: 1-866-237-2687
SPECDESK.NA.ENTRANCE@ASSAABLOY.COM

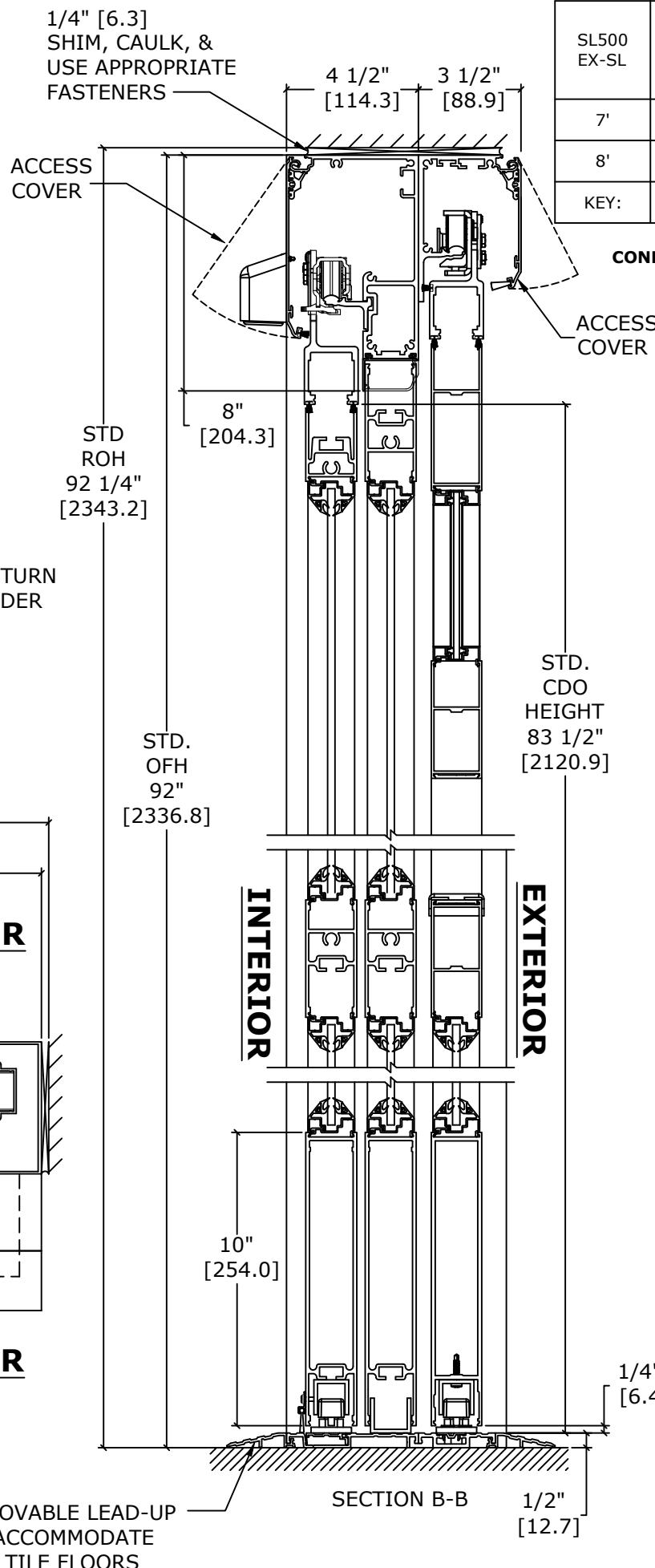
ASSA ABLOY SL500 EX-SL
OVERHEAD CONCEALED
NARROW STILE BI-PART DOOR SYSTEM

*ELECTRICAL SERVICE
120 VAC. 50/60 HZ.
15/20A. BY ELEC. CONTR.
TO JUNCTION BOX



PATENT PENDING
APPLICATION NO:17/955,799

WARNINGS: NOT FOR PUBLIC USE, TRAINED TRAFFIC ONLY.
NOT FOR USE AS AN ACCESSIBLE MEANS OF EGRESS.
REFER TO RELEVANT [LOCAL, STATE, NATIONAL, OR AHJ] BUILDING CODE FOR MIN DOOR HEIGHT & MIN/MAX WIDTH ALLOWABLE FOR EGRESS REQUIREMENT IN CONJUNCTION WITH TABLE.



REMOVABLE LEAD-UP TO ACCOMMODATE 1/2" TILE FLOORS

SL500 EX-SL	OVERALL FRAME WIDTH (A)	CLEAR DOOR OPENING WIDTH (B)	DOOR WIDTH (C)	ROUGH OPENING WIDTH (D)	SERVICE OPENING WIDTH (E)	SERVICE OPENING HEIGHT (F)
7'	84" [2133.6]	30" [762]	21 3/8" [542.9]	84 1/2" [2146.3]	35 1/4" [895.4]	32 3/4" [831.9]
8'	96" [2438.4]	36" [914.4]	24 3/8" [619.1]	96 1/2" [2451.1]	41 1/4" [1047.8]	32 3/4" [831.9]
KEY:	D-1/2" [12.7]	(A/2)-12" [304.8]	(A/4)+3/8" [9.5]	A+1/2" [12.7]	(A/2)-6 3/4" [171.5]	OFH-(G+21 1/4") [539.8]

CONSULT FACTORY FOR ALL CUSTOM CONFIGURATION SIZES.
CONFIGURATIONS OTHER THAN 7' WILL REQUIRE ADDITIONAL LEAD TIME.

DIMENSIONS FOR 1/4" [6.4] GLASS:

BASE PACKAGE: QTY 4 EACH

UPPER	OFH-(G+12.375" [314.3])	X	(A/4)-4.500" [114.3]
LOWER	G-14.5" [368.3]	X	(A/4)-4.500" [114.3]

C-DOOR: QTY 2 EACH

UPPER	5.313" [134.9]	X	C- 6.625" [168.3]
LOWER	G-14.5" [368.3]	X	C- 6.625" [168.3]

- NOTES:**
- STANDARD PACKAGE CONSISTS OF:
- STANDARD FINISHES: CLASS 1, .018MM, CLEAR- AA-M12C22A41; CLASS 1, .018MM, DARK BRONZE- AA-M12C22A44
 - SL500 BASE PANELS CONSISTS OF NARROW STILE RAILS
 - 10" BOTTOM RAILS AND 4" MUNTINS
 - 1/4" SLOPED GLASS STOPS AND BLOCKS
 - FULL THRESHOLD W/ LEAD-UPS
 - ECODOOR SEALS WITH SURFACE APPLIED BOTTOM DOOR SWEEPS
 - NON-BREAKOUT PANELS AND GUIDES
 - FAIL SAFE ELECTRIC LOCK, SEE SHEET AA-81
 - PRESENCE SENSORS WITH HEADER MOUNTED WAVE ACTIVATION SENSORS
 - SL500 BASE PACKAGE CONSISTS OF ONE POINT LOCK
 - 3-POSITION MODE SELECTOR: HOLD OPEN, ON, OFF
 - EX PANELS ARE SELF-OPENING AND TIMED BY BELT FOR CONVENIENCE
 - EX PANELS USE THUMBTURN TWO POINT LOCK
 - EX PANELS CONSIST OF NARROW STILE NOSE RAIL AND MEDIUM STILE HEEL RAIL
 - SECURITY SWITCHES, SEE SHEET AA-85
 - DOOR POSITION SWITCH, SEE SHEET AA-82

- OPTIONS AVAILABLE:
- SPECIAL FINISHES (WET & POWDER COAT)
 - PACKAGE WILL ACCEPT UPTO 1" INSULATED GLASS, SEE SHEET AA-70
 - EX SENSORS, SEE SHEET AA-182
 - PUSH PLATES, SEE SHEET AA-185
 - WAVE PLATES, SEE SHEET AA-184
 - WIRELESS TRANSMITTERS/ RECEIVERS, SEE SHEET AA-186
 - SEE SHEET OS-7 FOR ALL OTHER OPTIONS

COMPLIES WITH ANSI/BHMA A156.38 STANDARD FOR LOW ENERGY POWER OPERATED SLIDING AND FOLDING DOORS.

DWG NO.	1023008
DRN BY	DBN
DATE	3/2/22
CHK BY	CBG
DATE	10/7/22
REV.	3.0
DATE	11/14/22

ASSA ABLOY