



Claude Ballbe - BH	claude@signsunlimitedusa.com
919-552-8689	www.signsunlimitedusa.com
07.14.25	 Underwriters Laboratories Inc.® UL File #E225670

Approval Signature:

Please check all spelling, quantities, colors, and materials before approving

Notes: **NEED SURVEY TO CONFIRM SCALE & MATERIALS PRIOR TO MANUFACTURE**

**SIGNS:UNLIMITED**  
communicate your identity  
6801 Mount Hermon Church Rd, Building C  
Durham, NC 27705

ACE Hardware  
264 Cedar Lane  
Vienna, VA 22180

Allowable Signage Area

Sq. Ft. Signage:  
58.46

Sq. Ft. Allowance:

Building-mounted sign area is that area within a single continuous rectilinear perimeter of not more than eight straight lines intersecting at right angles, that encloses the outer limits of all words, representations, symbols, and pictorial elements, together with all material, color, and lighting forming an integral part of the display or used to differentiate the sign from the background against which it is placed.

Signs are limited to one and one-half square feet of sign area or each linear foot of building frontage. No single sign may exceed 200 square feet in area



Claude Ballbe - BH	claude@signsunlimitedusa.com
919-552-8689	www.signsunlimitedusa.com
06.26.25	 Underwriters Laboratories Inc.® UL File #E225670

Approval Signature:

Please check all spelling, quantities, colors, and materials before approving

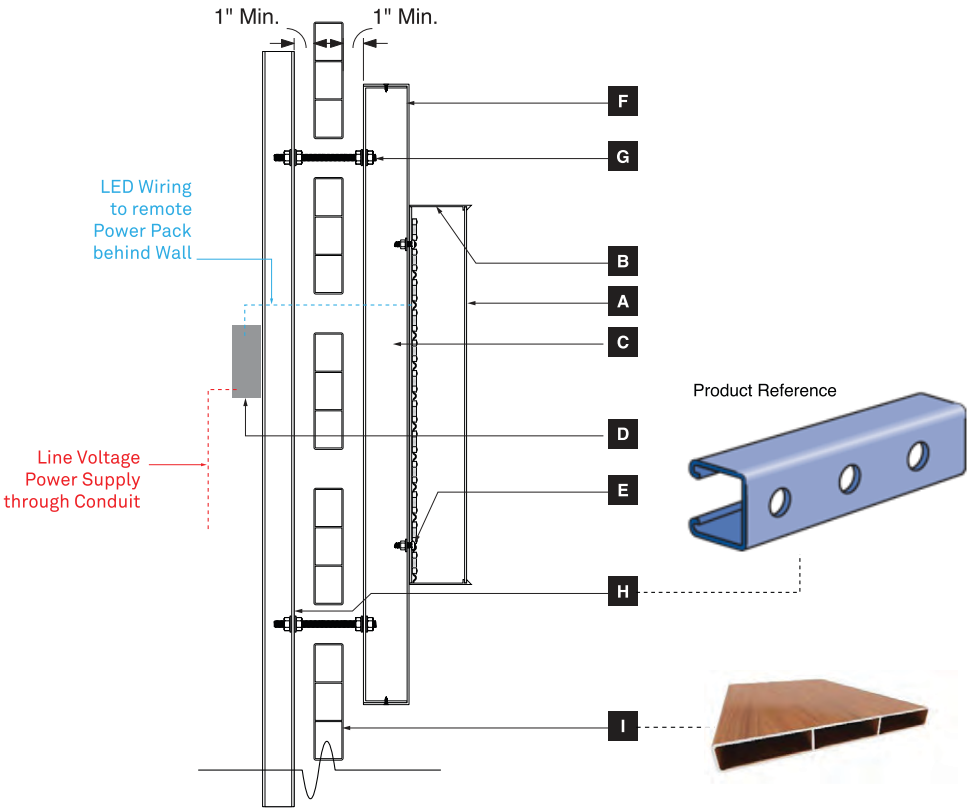
Notes: **NEED SURVEY TO CONFIRM SCALE & MATERIALS PRIOR TO MANUFACTURE**

**SIGNS UNLIMITED**  
communicate your identity  
6801 Mount Hermon Church Rd, Building C  
Durham, NC 27705



**LED SPECS:**  
**COLOR:** Warm White  
**PART#:** HLED-P2072WWARM  
**COLOR TEMP:** 3000~3300K  
**LUMENS:** 70 lm/mod (140 lm/ft.)  
**BRAND:** HanleyLED

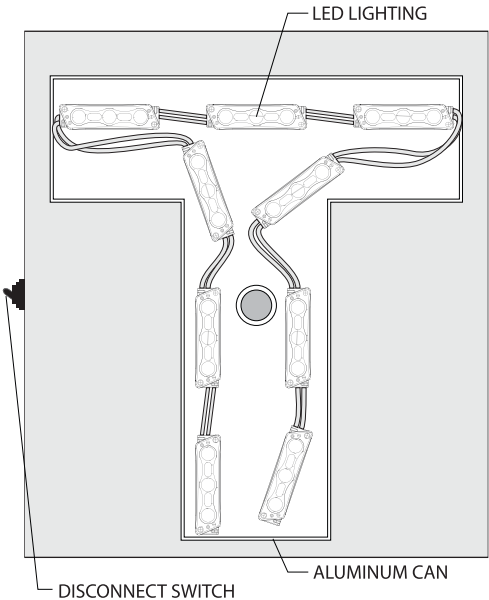
SIDE VIEW



- A** Fabricated Letter - Acrylic Letter Face  
3/16" Translucent White Acrylic
- B** Fabricated Letter - Can  
3"D .090" Bent Aluminum Return Profile w/  
Integrated Acrylic Letter Face Retainer  
w/ 1/8" Thk. ACM Letter Back
- C** Fabricated Letter - Illumination  
L.E.D. Illumination - Product Per Manufacturer Spec.  
4000k "Cool White" Temperature
- D** Power Pack  
Remote Power Pack, located behind wall surface  
Final Product Spec. T.B.D. per Manufacturer Recom.
- E** Letter Mounting  
S.S. Bolt w/ Nut + Washer to secure Channel Letter  
to Tenant Sign Panel Face
- F** Tenant Sign Panel  
2"D Fabricated Aluminum Pan Construction w/  
Flathead + Countersunk fasteners on return edge to  
secure Sign Panel Face to Backer
- G** Anchor Fastener  
1/2"-20 S.S. All-Thread Support Rod from Unistrut  
to secure Tenant Sign Panel Backer w/ S.S. Hex Nut,  
MMC#94804A345 and Washers, MMC#90107A033  
Anchor Fasteners can move to different Unistrut Locations  
for Sign Panel Re-location without affecting Sign Band
- H** Unistrut Supports  
P1000HS - 1-5/8" x 1-5/8", 12 Gage:  
9/16" Dia. Round Holes @ 1.875" O.C.  
Powdercoat Black to Match Sign Band Support Structure  
Install at 48" O.C. Vertically behind Sign Band  
w/ 1" Offset
- I** Sign Band  
Extruded Aluminum "Slat" Profiles by Knotwood  
w/ "Woodgrain" Pattern - Final Color Spec. T.B.D.


**NOTE \***  
Final survey should be conducted by  
Sign Contractor to verify conditions prior to  
fabrication / install.

FRONT VIEW



This sign and its attachments are designed to meet all the requirements of IBC 2015 Sections H105.3 & H105.4.

This sign and its attachments are designed to withstand 115 mph winds.

Claude Ballbe	claude@signsunlimitedusa.com	Approval Signature:	Please check all spelling, quantities, colors, and materials before approving	<div><div>SIGNS:UNLIMITED</div><div>communicate your identity</div><div>6801 Mount Hermon Church Rd, Building C Durham, NC 27705</div></div>
919-552-8689	www.signsunlimitedusa.com			
4/26/22	<div><div></div><div>Underwriters Laboratories Inc.® UL File #E225670</div></div>	Notes:		
©COPYRIGHT NOTICE: Signs Unlimited expressly reserves its common law copyright and other property rights in these drawings. These drawings are not to be reproduced, changed or copied in any form or manner without written expressed permission from Signs Unlimited or its affiliates.				



ACE Hardware  
264 Cedar Lane  
Vienna, VA 22180

Existing Area Photos



Claude Ballbe - BH	claude@signsunlimitedusa.com
919-552-8689	www.signsunlimitedusa.com
07.14.25	 Underwriters Laboratories Inc.® UL File #E225670

Approval Signature:

Please check all spelling, quantities, colors, and materials before approving

Notes: **NEED SURVEY TO CONFIRM SCALE & MATERIALS PRIOR TO MANUFACTURE**



communicate your identity

6801 Mount Hermon Church Rd, Building C  
Durham, NC 27705

ACE Hardware  
264 Cedar Lane  
Vienna, VA 22180

Rout-out Push Thru Monument Panel

Quantity:  
1

Letter Material:  
1/2" Clear Acrylic w/  
Applied Vinyl

Backer Material:  
1" Painted Aluminum Pan

Mounting:  
Attached to  
Exsiting Cabinets

Sq. Ft. Signage:  
7.00

Sq. Ft. Allowance:  
TBD



Decription: Caviar  
Paint: Matthews Acrylic  
Color: Match SW 6990 Caviar



Decription: Jute Brown  
Paint: Matthews Acrylic  
Color: Match SW 6096 Jute Brown



- A** Fabricated Letter - Acrylic Letter Face  
3/16" #2406 Translucent White Acrylic
- B** Fabricated Letter - Can  
5"D .090" Bent Aluminum Return Profile w/  
Integrated Acrylic Letter Face Retainer  
w/ 1/8" Thk. ACM Letter Back
- C** Tenant Panel Cabinet  
Fabricated Aluminum Cabinet Construction w/ custom  
routed face + Fabricated Reveal between Panels  
Paint P1 (Cabinet) / Paint P5 (Reveal)
- D** Tenant Sign Copy  
3/8" Clear Acrylic w/ 1/8" routed flange + 1/8" visible  
return at cabinet face w/ Applied Translucent Vinyl
- E** Outer Cabinet Frame  
Fabricated Aluminum Cladding over Existing Sturcture  
Paint P1
- F** Central Cabinet Cladding  
Extruded Aluminum "Slat" Profiles by Knotwood  
w/ Hickory "Woodgrain" Pattern
- I** Ground Treatment  
Low-Lying Plantings at base of sign  
by Landscape Contractor

NOTE \*  
Final survey should be conducted by  
Sign Contractor to verify conditions prior to  
fabrication / install.

Claude Ballbe - BH	claudio@signsunlimitedusa.com
919-552-8689	www.signsunlimitedusa.com
07.14.25	Underwriters Laboratories Inc.® LISTED UL File #E225670

Approval Signature:

Notes: **NEED SURVEY TO CONFIRM SCALE PRIOR TO MANUFACTURE**

Please check all spelling, quantities,  
colors, and materials before approving

**SIGNS:UNLIMITED**  
communicate your identity  
6801 Mount Hermon Church Rd, Building C  
Durham, NC 27705

ACE Hardware  
264 Cedar Lane  
Vienna, VA 22180

PRODUCTION TO MATCH EXISTING SIGNAGE

Under Canopy Panel - Non-Illuminated on Brackets

Quantity:

1

Material:

.125 Aluminum

Color:

TBD

Logo to be Matte Finish

Cabinet to be Satin Finish

Face:

Applied Vinyl

Vinyl Color:



Description: Caviar  
Paint: Matthews Acrylic  
Color: Match SW 6990 Caviar



Description: Turkish Coffee  
Paint: Matthews Acrylic  
Color: Match SW 6076 Turkish Coffee

Mounting:

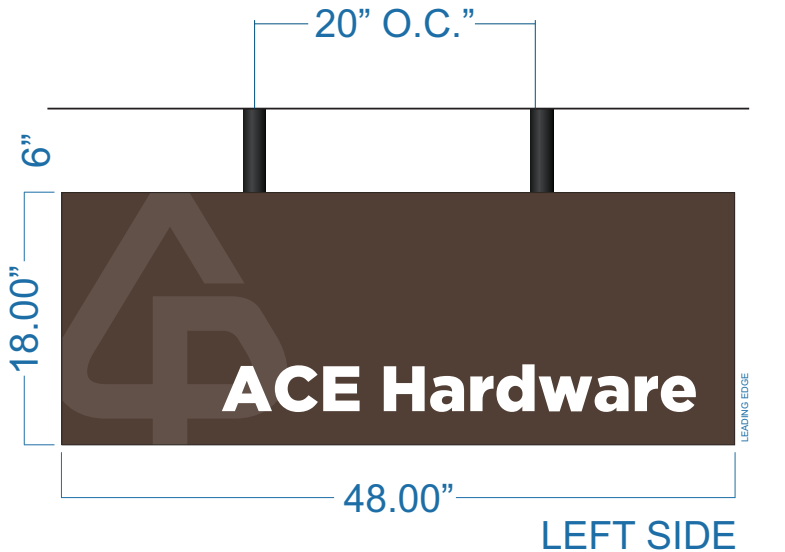
Match Existing

Sq. Ft. Signage:

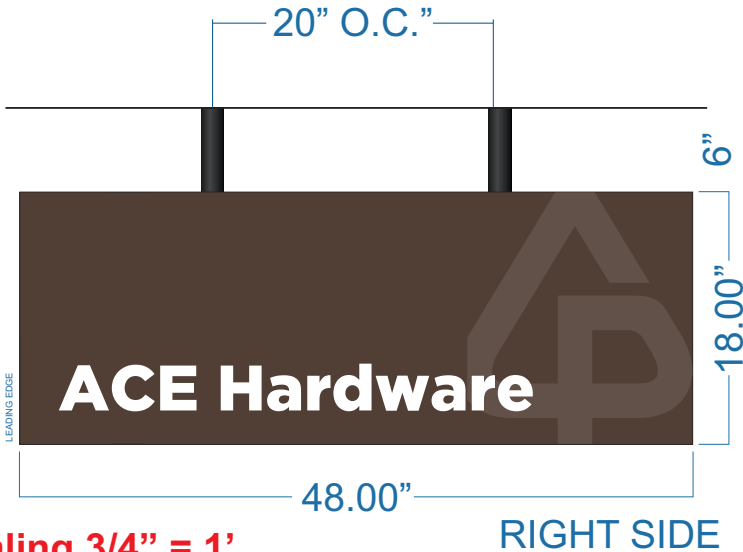
6.00

Sq. Ft. Allowance:

TBD

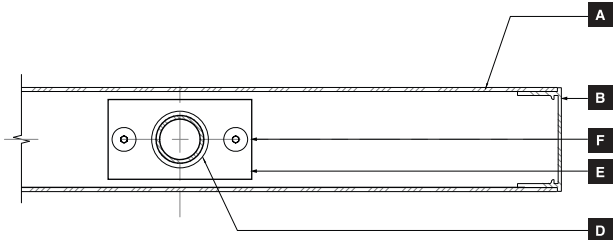


LEFT SIDE

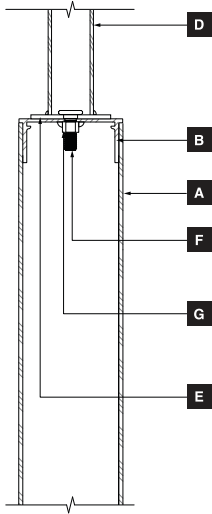


RIGHT SIDE

Scaling 3/4" = 1'



C Section Detail - Plan View - Typical



D Section Detail - Side View - Typical

- A** Sign Panel  
3mm Composite Aluminum. Bonded to Sign Frame  
Paint All Surfaces - P4
- B** Sign Frame  
SignComp #1270 Series 3 Bleed Body. Mitre-Cut +  
Welded at interior corners.  
Paint All Surfaces - P4
- C** Sign Copy - Typical  
Cut + Applied Opaque Vinyl Graphics
- D** Mounting Pipe  
1 1/2" OD 6061-T6 Aluminum Mounting Pipe  
Continuous welded connection to Alum Mounting Plate  
Paint All Surfaces - P1
- E** Mounting Plate  
4 1/2" x 2 1/2" x 1/8" Thk. Welded Alum. Mounting Plate
- F** Fastener  
Ultra-Low-Profile Socket Head Screw, 3/8" -16 Thread, 1" L  
MMC#91223A231
- G** Hex Nut  
Aluminum Hex Nut, 3/8" -16 Thread, Welded to Sign Frame  
MMC#90670A031

NOTE \*  
Final survey should be conducted by  
Sign Contractor to verify conditions prior to  
fabrication / install.

Claude Ballbe - BH	claudio@signsunlimitedusa.com
919-552-8689	www.signsunlimitedusa.com
07.14.25	Underwriters Laboratories Inc.® UL File #E225670

Approval Signature:

Please check all spelling, quantities,  
colors, and materials before approving

Notes: **NEED SURVEY TO CONFIRM SCALE & MATERIALS PRIOR TO MANUFACTURE**

**SIGNS UNLIMITED**  
communicate your identity  
6801 Mount Hermon Church Rd, Building C  
Durham, NC 27705