



2 SIDE ELEVATION (FACING PARKING)  
1/4" = 1'-0"



1 MAPLE AVE ELEVATION  
1/4" = 1'-0"

  
FIBER CEMENT PANEL - DARK - FC-1  
NICHHA FIBER CEMENT  
VINTAGEWOOD AWP 3030 AND AWP  
1818  
COLOR: BARK

  
FIBER CEMENT PANEL - LIGHT - FC-2  
NICHHA FIBER CEMENT  
VINTAGEWOOD AWP 3030 AND AWP  
1818  
COLOR: ASH

  
CAST STONE - ST-4  
CORONADO STONE PRODUCTS  
MANUFACTURED STONE VENEER  
COLOR: CREAM  
FINISH: CHISELED LIMESTONE

  
ALUMINUM COMPOSITE MATERIAL - ACM-1  
ALCOA ARCHITECTURAL PRODUCTS  
REYNOBOND  
COLOR: DURAGLOSS "CHASE SILVER"

  
ROOF COPING - DARK - RC-1  
PETERSON ALUMINUM / PAC-CLAD  
PAC-CONTINUOUS  
COLOR: AGED BRONZE





2 GLYNDON STREET ELEVATION  
1/4" = 1'-0"




1 ENTRY ELEVATION (FACING PARKING)  
1/4" = 1'-0"

  
FIBER CEMENT PANEL - DARK - FC-1  
NICHIIA FIBER CEMENT  
VINTAGEWOOD AWP 3030 AND AWP  
1818  
COLOR: BARK

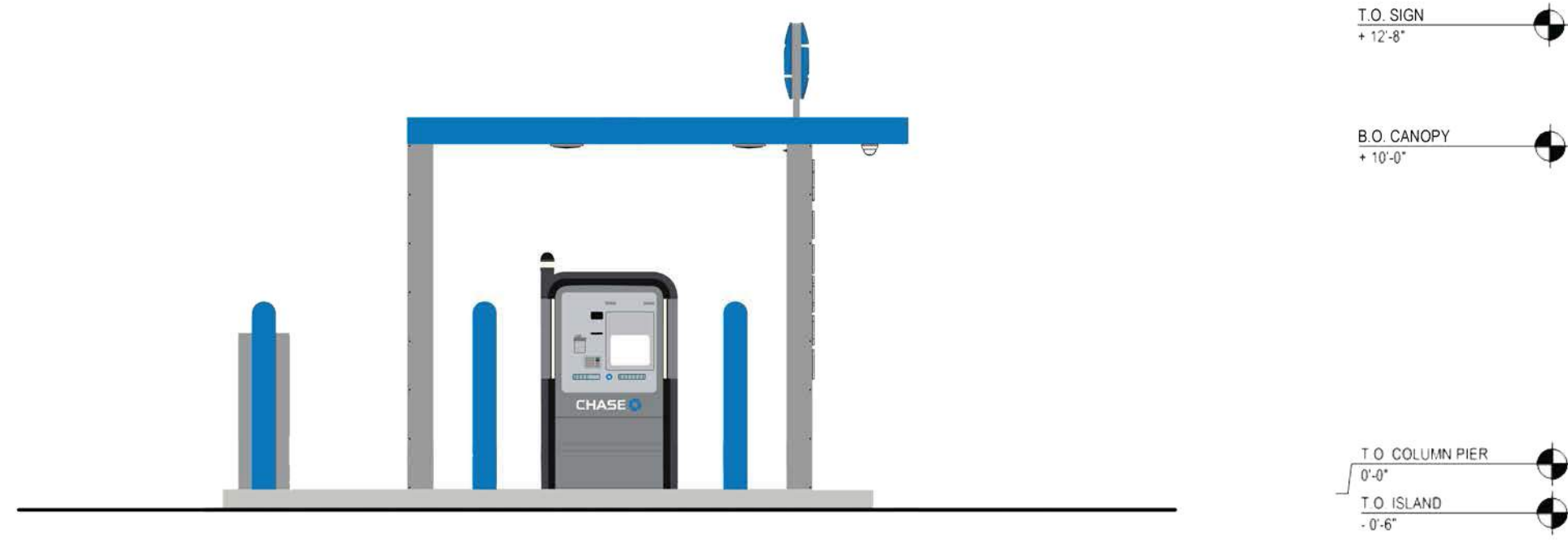
  
FIBER CEMENT PANEL - LIGHT - FC-2  
NICHIIA FIBER CEMENT  
VINTAGEWOOD AWP 3030 AND AWP  
1818  
COLOR: ASH

  
CAST STONE - ST-4  
CORONADO STONE PRODUCTS  
MANUFACTURED STONE VENEER  
COLOR: CREAM  
FINISH: CHISELED LIMESTONE

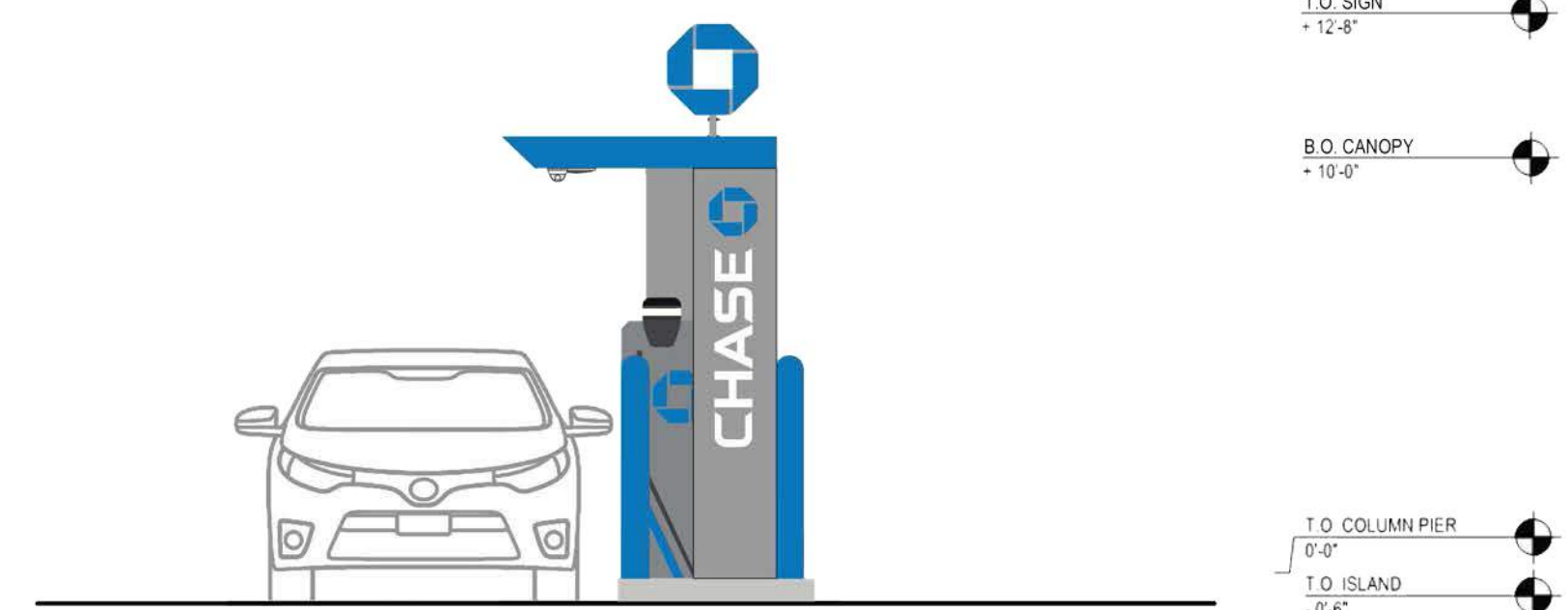
  
ALUMINUM COMPOSITE MATERIAL - ACM-1  
ALCOA ARCHITECTURAL PRODUCTS  
REYNOBOND  
COLOR: DURAGLOSS "CHASE SILVER"

  
ROOF COPING - DARK - RC-1  
PETERSON ALUMINUM / PAC-CLAD  
PAC-CONTINUOUS  
COLOR: AGED BRONZE

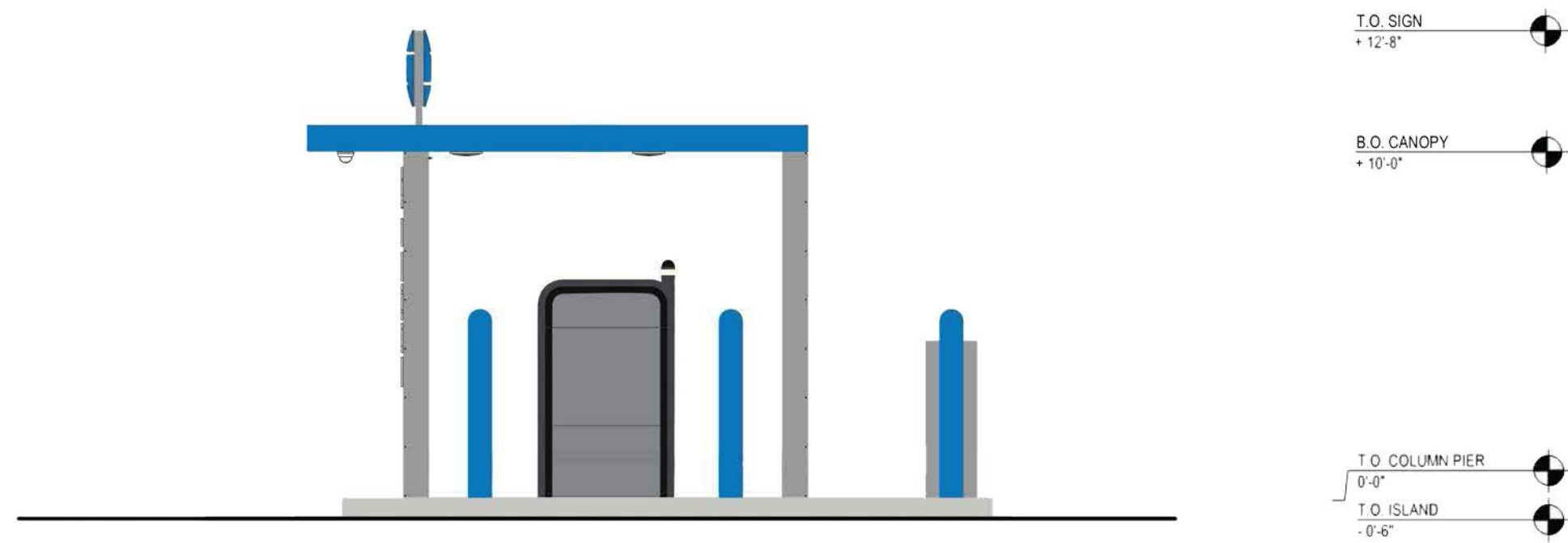




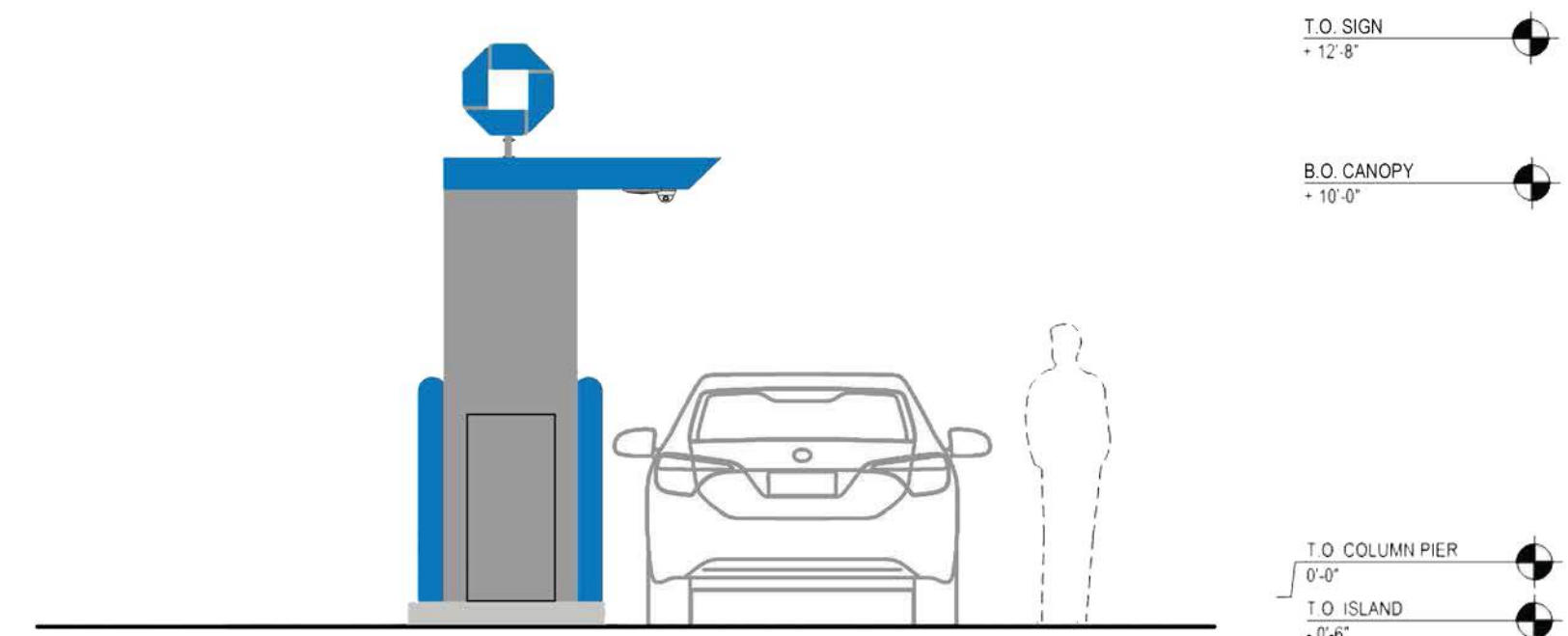
4 **SOUTHWEST ELEVATION**  
1/4" = 1'-0"



3 **SOUTHEAST ELEVATION**  
1/4" = 1'-0"



2 **NORTHEAST ELEVATION**  
1/4" = 1'-0"



1 **NORTHWEST ELEVATION**  
1/4" = 1'-0"

  
PAINTED ALUMINUM PANELS - BLUE  
FACTORY FINISHED ELECTRO-STATIC  
PAINTED ALUM. PANELS  
COLOR: BLUE

  
PAINTED ALUMINUM PANELS - GREY  
FACTORY FINISHED ELECTRO-STATIC  
PAINTED ALUM. PANELS  
COLOR: GREY



315 MAPLE AVE E  
VIENNA, VA 22180

# PROPOSED EXTERIOR ELEVATIONS

NOVEMBER 22, 2021

SCALE: 1/4" = 1'-0"

