



**RUST | ORLING**  
ARCHITECTURE

1215 CAMERON STREET  
ALEXANDRIA, VA  
22314

T - 703.836.3205  
F - 703.548.4779  
admin@rustorling.com  
www.rustorling.com



Field & Tung  
Structural Engineers  
1210 18th Street NW  
Third Floor  
Washington, DC 20036  
202.760.2270

**CADENCE AT PARK**  
VIENNA, VIRGINIA

20.014

REVISIONS

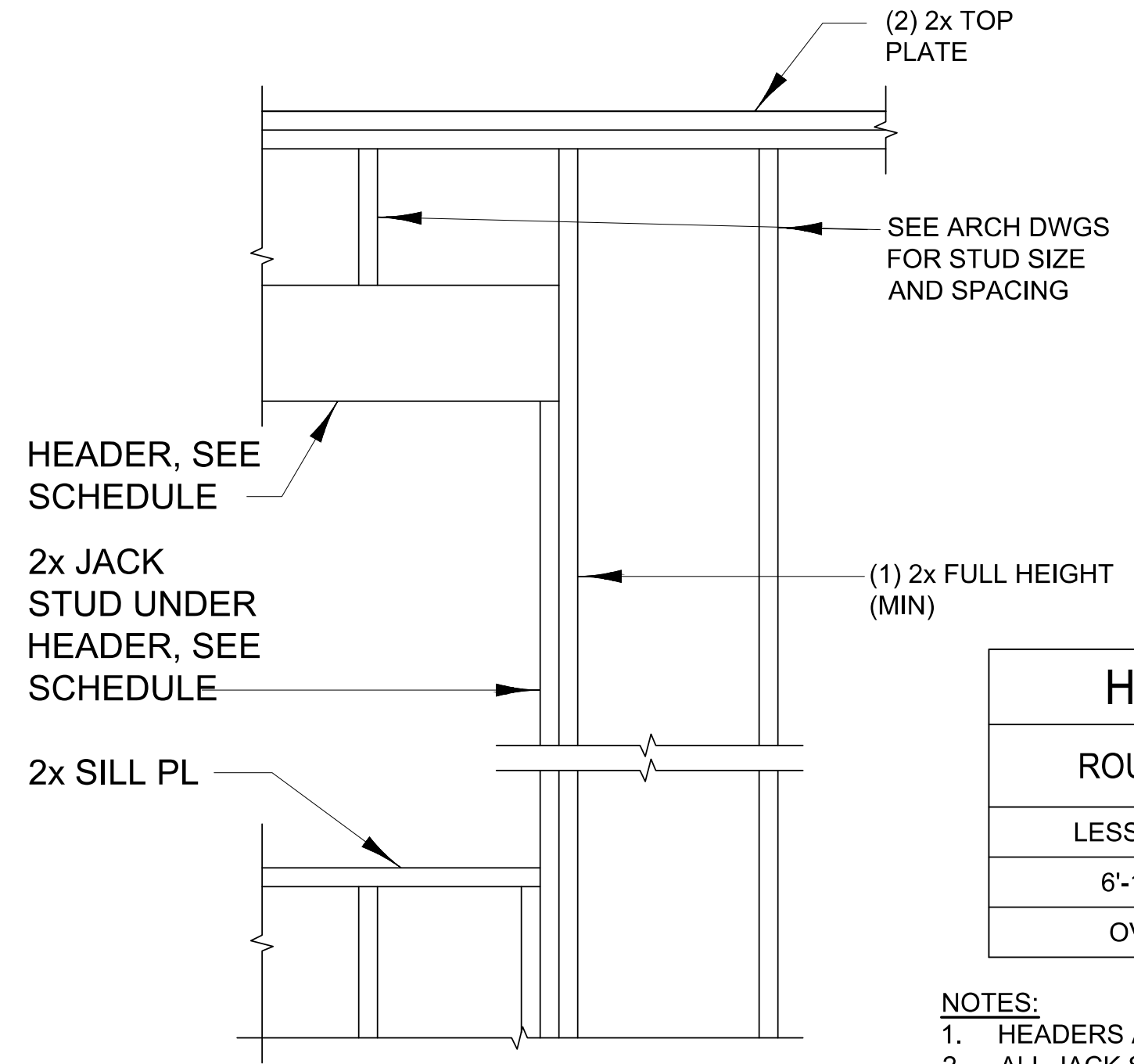
DATE	DESCRIPTION

FOR PERMIT  
12.09.20

SECTIONS AND DETAILS

SHEET NO.

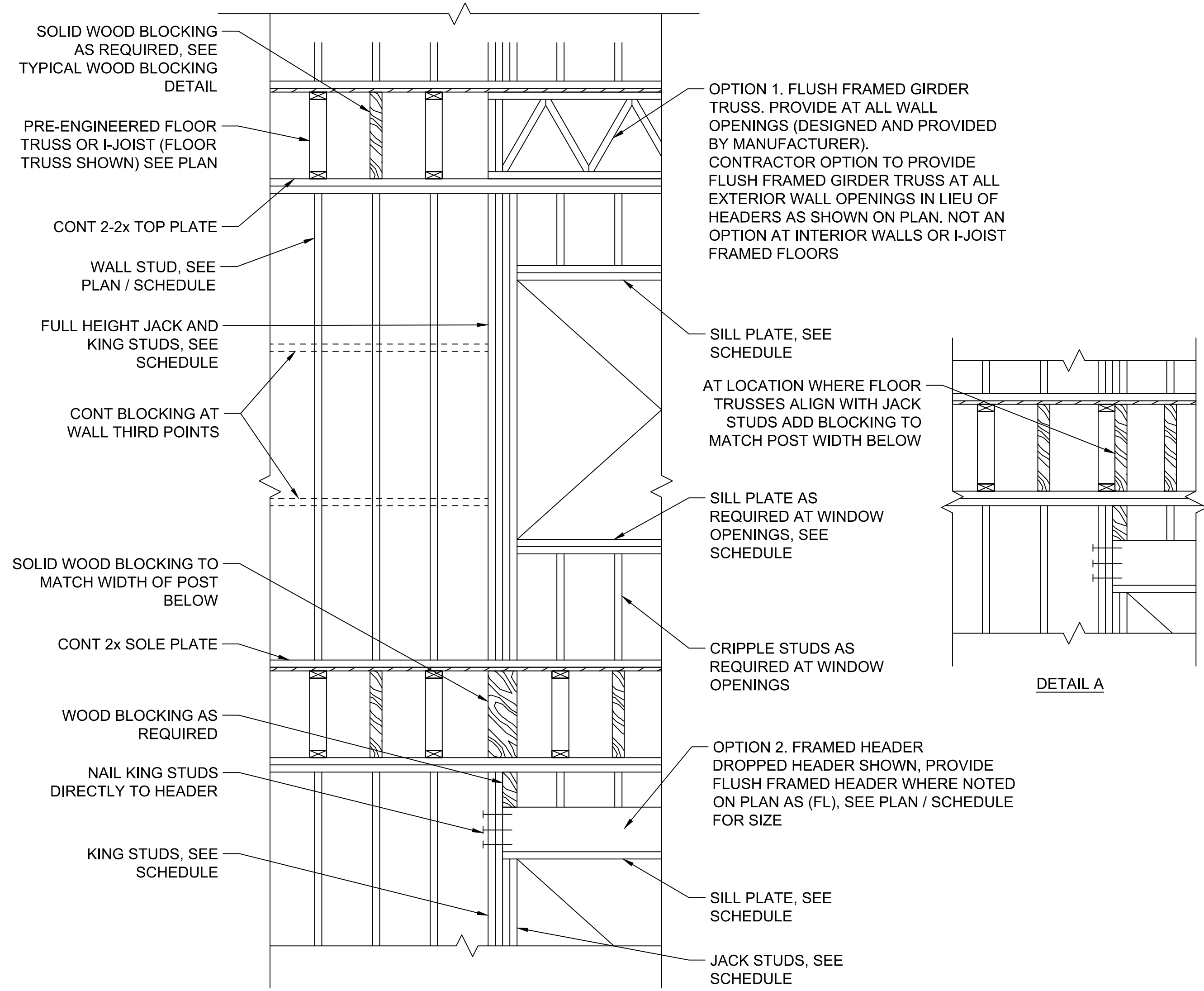
**S261**



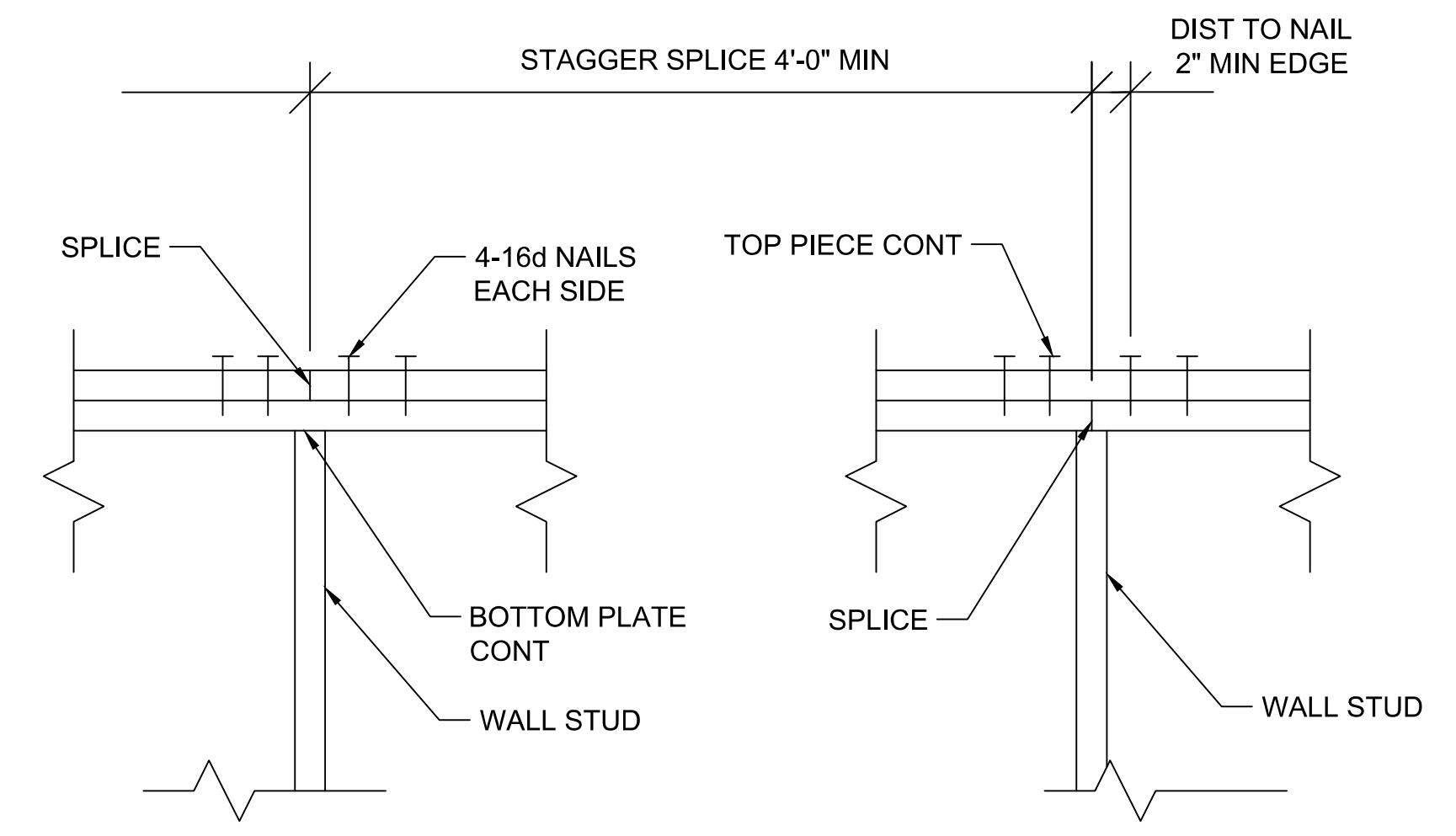
HEADER SCHEDULE	
ROUGH OPG	HEADER
LESS THAN 6'-0"	(3) 2x14
6'-1" TO 8'-0"	(2) 1.75 X11.25 LVL
OVER 8'-0"	SEE PLAN

- NOTES:  
 1. HEADERS AND JAMBS ARE TYPICAL UNO, SEE PLAN.  
 2. ALL JACK STUDS SHALL BE SPF NO. 1/NO. 2 OR BETTER.  
 3. REF S260 FOR ADDITIONAL REQ'S

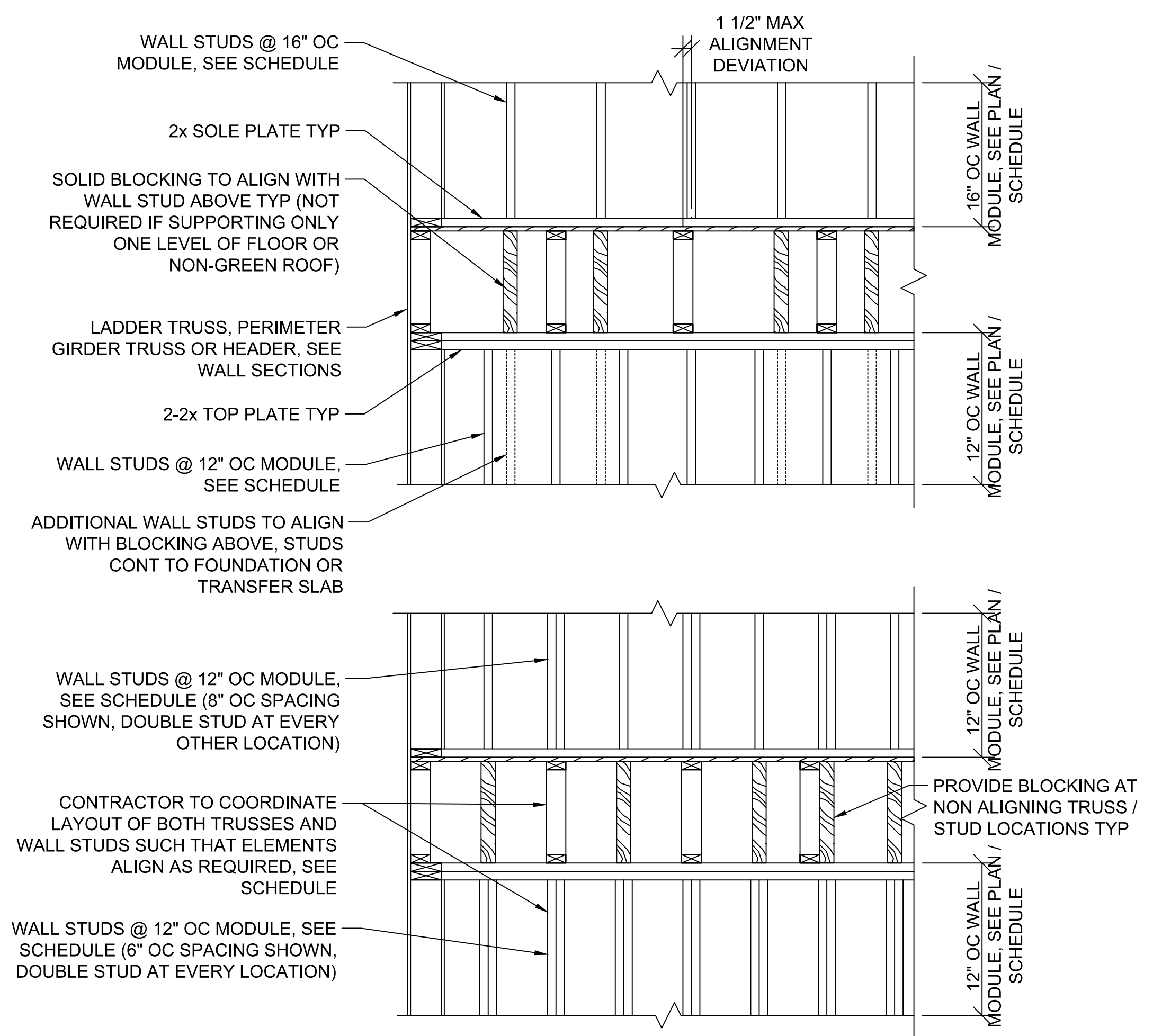
WALL FRAMING AT OPENING  
SCALE: NOT TO SCALE 1 S261



TYPICAL WALL PANEL ELEVATION  
SCALE: NOT TO SCALE 3 S261



TYPICAL TOP PLATE SPLICE DETAIL  
SCALE: NOT TO SCALE 2 S261



TYPICAL WALL BLOCKING DETAIL AT BEARING WALL  
SCALE: NOT TO SCALE 4 S261