

# Vienna Township Architectural Review

Board of Architectural Review Approved  
March 21, 2024

Town of Vienna  
**Approved**  
03/26/2024

## MASTER SIGN PLAN: Facade Front

- Current Tenant Channel Letter Sign:
  - The Logo in the proposed color scheme
  - words "Health" & "Check" in the proposed colors, but perforated so at night the words of the sign show as white
  - Urgent Care to remain in red for both Urgent Care signs
  - 3500 Kelvins
- Future Tenant Channel Letter Sign:
  - The Logo should be in the master sign plan approved colors
  - Channel letters should be in the master sign plan approved colors, but perforated so at night the words of the sign show as white.
  - 3500 Kelvins



\* External Color Modification

Component	Color / Details
① .040 aluminum return	Black / Interiors Red
② 1" trim cap	Black
③ 3/16" acrylic	White
④ Return depth	4"
⑤ Raceway #1	Extruded 7"H x 4.5"D x 322"L
⑥ Raceway #2	Extruded 7"H x 4.5"D x 142"L
⑦ Cabinet #1	Extruded 36"H x 4.5"D x 96"L
⑧ Cabinet #2	Extruded 36"H x 4.5"D x 96"L
⑨ Cabinet #3	Extruded 36"H x 4.5"D x 96"L

Pantone	298C	7672C	1788C	WHITE
---------	------	-------	-------	-------

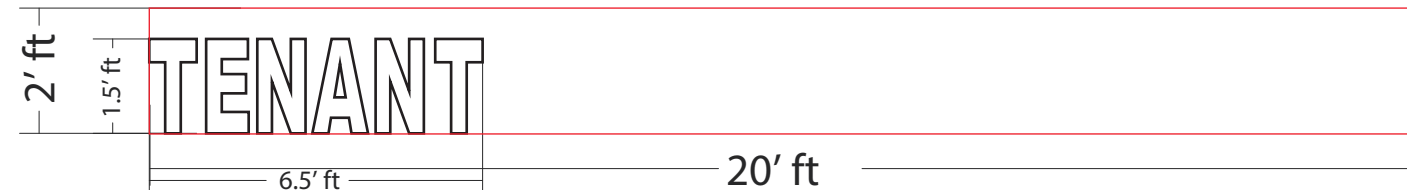
Alternate Roofing Color

Sherwin-Williams	Loyal Blue 6510
------------------	-----------------

**SQUARE FOOTAGE BREAKDOWN**  
**STORE FRONT: 71'**  
**CODE FORMULA: 2x Frontage**  
**Allowed 142 Sq Ft**

**Proposed Signage**  
**87 Sq Ft**

	Font Type	Font Size
Cabinets #1-3	Arial Black, 55%W	10.5"
Channel Letters	Arial Bold, 65%W	18"
Pylon	Arial Black, 55%W	N/A



\* Placement Only - For Future Tenants, 40 sqft. Available



**CUSTOMERS NAME:**  
Health Check UrgentCare

**PROJECT LOCATION:**  
Iris Building  
305 Maple Ave.  
Vienna, VA, 22180

**DRAWN BY:** Saul V.  
**DATE:** 12/15/2023  
**SALESPERSON:** ADAM EHRLICH

This design is the property of Alpha Signs & Visuals. Any unauthorized use in whole or in part is prohibited and violators will be prosecuted in the fullest extent of the law.  
 This sign is intended to be installed in accordance with the requirements of Article 600 of the National Electrical Code and/or other applicable local codes. This includes proper grounding and bonding of the sign.

**CUSTOMER APPROVAL**  
 Signature: \_\_\_\_\_  
 Print: \_\_\_\_\_ Date: \_\_\_\_\_

# Vienna Township Architectural Review

## Cabinet Box Signs

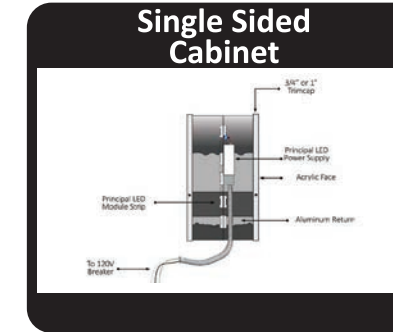
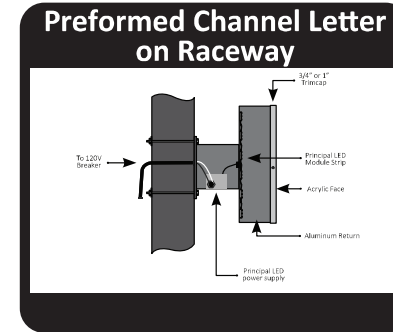
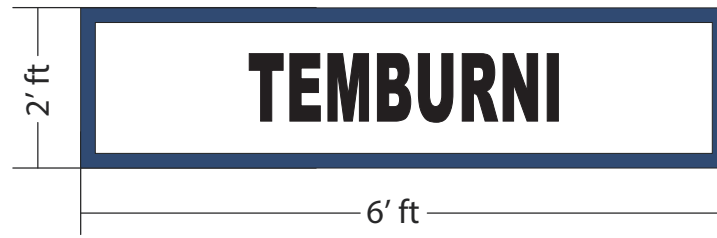
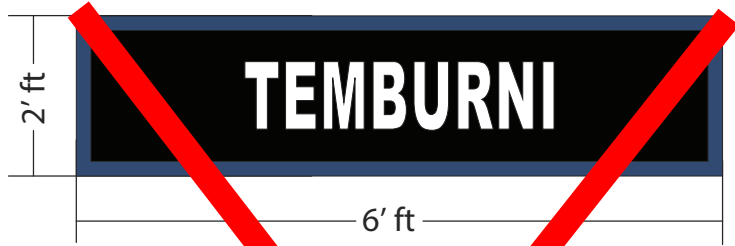
Town of Vienna  
Approved  
03/26/2024

Board of Architectural Review Approved  
March 21, 2024

### Conditions or Modifications of Approval:

- Box Signs to be the alternate sign choice with Loyal Blue trim and Loyal Blue lettering

### Alternate Option



**Specs:** Two sets Preformed channel letters w/ polycarb faces and LED's - raceway mounted  
**Face:** White polycarbonate w/ Light Blue, Navy, Red & White vinyl applied as per artwork.  
**Trim:** 1" Black.  
**Return:** 4' pre-finished Black / Interiors White.  
**Illumination:** Principal QwikMod White PLQM2-TW150-P. 7100K, 118lm/w, 94.1 lm/mod.  
**Power Supplies:** Principal P-OH060-12-EC 90-305VAC - rwy.  
**UL Specs:** UL Listed w/ UL Labels  
**Drain Holes:** Yes.  
**Electrical Holes:** To raceway / Primary hole to be plugged (leave lead rolled up inside).  
**Mounting Holes:** To raceway.  
**Raceway Info:** EXTRUDED 7" Tall x 4.5" Deep x length above disconnect switch / painted SW 7008-23 Alabaster.  
**Hardware:** external mounting brackets.

	SQ FT	Proposed Signage	Component	Color / Details
①	41	Health Check Urgent Care #1	① .040 aluminum return	Black / Interiors Red
②	24	Urgent Care #2	② 1" trim cap	Black
③	40	Future Tenant (Available)	③ 3/16" acrylic	White
④	12	East Wing Spa	④ Return depth	4"
⑤	12	Luna Hair Studio	⑤ Cabinet #1	Extruded 36"H x 4.5"D x 96"L
⑥	12	Temburni Family & Aesthetic	⑥ Cabinet #2	Extruded 36"H x 4.5"D x 96"L
			⑦ Cabinet #3	Extruded 36"H x 4.5"D x 96"L

**SQUARE FOOTAGE BREAKDOWN**  
**STORE FRONT: 71'**  
**CODE FORMULA: 2x Frontage**  
**Allowed 142 Sq Ft**

**Proposed Signage**  
**87 Sq Ft**

Alternate Roofing Color	
Sherwin-Williams	Loyal Blue

	Font Style	Font Size
Cabinets #1-3	Arial Black, 55%W	10.5"
Channel Letters	Arial Bold, 65%W	18"
Pylon	Arial Black, 55%W	N/A

# Vienna Township Architectural Review

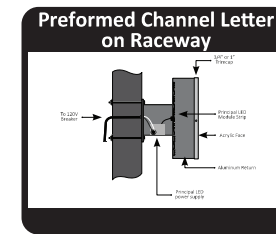
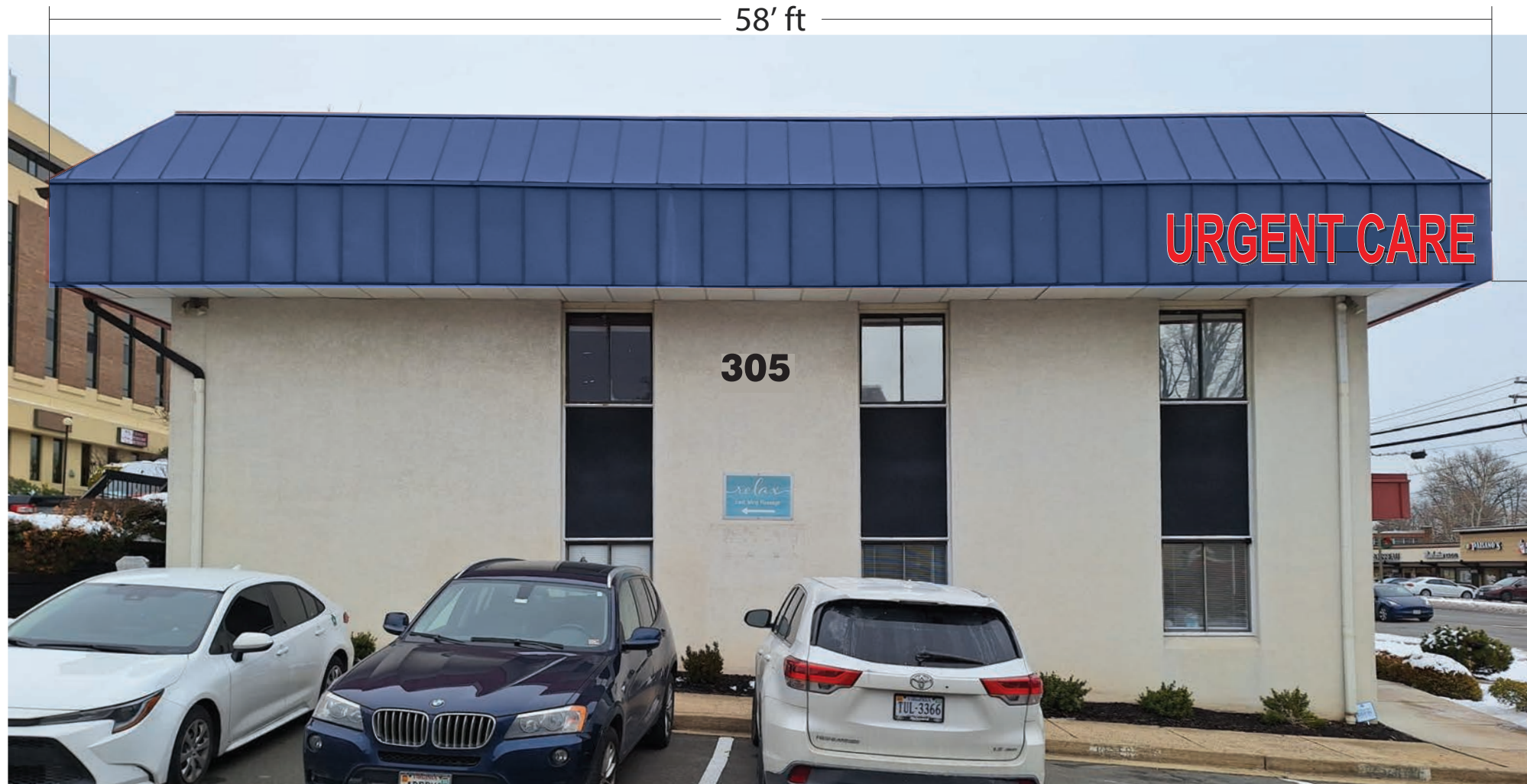
Facade Side Facing Maple Ave.

Town of Vienna  
Approved

03/26/2024

Board of Architectural Review Approved  
March 21, 2024

- Urgent Care to remain in red for both Urgent Care signs
- 3500 Kelvins



**Specs:** Two sets Preformed channel letters w/ polycarb faces and LED's - raceway mounted  
**Face:** White polycarbonate w/ Red & White vinyl applied as per artwork.  
**Trim:** 1" Black.  
**Return:** 4' pre-finished Black / Interiors White.  
**Illumination:** Principal QwikMod White PLQM2-TW150-P. 7100K, 118lm/w, 94.1 lm/mod.  
**Power Supplies:** Principal P-OH060-12-EC 90-305VAC - rwy.  
**UL Specs:** UL Listed w/ UL Labels  
**Drain Holes:** Yes.  
**Electrical Holes:** To raceway / Primary hole to be plugged (leave lead rolled up inside).  
**Mounting Holes:** To raceway.  
**Raceway Info:** EXTRUDED 7" Tall x 4.5" Deep x length above disconnect switch / painted SW 7008-23 Alabaster.  
**Hardware:** external mounting brackets.

Component	Color / Details
① .040 aluminum return	Black / Interiors Red
② 1" trim cap	Black
③ 3/16" acrylic	White
④ Return depth	4"
⑤ Raceway #1	Extruded 7"H x 4.5"D x 250"L

Pantone	[Red Swatch]
	[Blue Swatch]

<b>Alternate Roofing Color</b>	
Sherwin-Williams	Loyal Blue [Blue Swatch]

\* External Color Modification



\* Current Condition

**SQUARE FOOTAGE BREAKDOWN**  
**STORE FRONT: 71'**  
**CODE FORMULA: 2x Frontage**  
**Allowed 142 Sq Ft**

**Proposed Signage**  
**24 Sq Ft**