

UPWARD-COILING SECURITY GRILLE SYSTEMS



PRODUCT LINE

STANDARD UPWARD-COILING GRILLE

SPRINGLESS ROLLING GRILLE

ADVANCE PERFORMANCE GRILLE

MODELS

670/671/674

671S

676

Project: Vienna Market - Retail
Architect: N/A
Contractor: Triad Construction
Overhead Door Company of Washington D.C



INDUSTRY LEADING
COMMERCIAL & INDUSTRIAL SOLUTIONS

MODELS 670/671/674

These grilles provide an attractive yet functional means to secure areas where public access must be restricted, without blocking air, light or sight. A wide range of options make these grilles an ideal choice for interior or exterior use in a variety of retail, industrial and commercial settings.



Standard Features at a Glance

Operation	Manual unless size requires chain hoist
Curtain	
Material/Finish	670: aluminum, mill finish 671: galvanized steel or optional stainless steel (2B or 4) 674: aluminum, clear anodized
Pattern	670/671: straight lattice (standard); staggered brick; straight with polycarbonate panels 674: perforated aluminum panels
Bottom bar	670: Extruded aluminum, mill finish 671: Double angle galvanized steel 674: Extruded aluminum, clear anodized
Guide type	Guide channels are extruded aluminum with continuous wear strips; 670/671 mill finish; 674 clear anodized; Wall angles and any pack-out angles are steel with black powder coat finish
Mounting	Interior face of wall is standard Between jamb option available
Brackets	Steel with black powdercoat finish
Pipe	Steel sized for maximum deflection of .03" per linear foot
Springs	Oil tempered, 20,000 cycle, torsion springs
Locking	670/671: Slide bolt for manual and crank operation; chain lock for chain hoist operation 674: Center locking bottom bar, with 1/2" diameter steel throw rods; Comes standard with cylinder locks on both sides or thumb turn on secured side

Options

Operation: Electric operator chain hoist, removable awning crank
Electric operator with automatic emergency egress (670, 671); compliant with IBC 1008.1.4.4 & NFPA 101

Controls: Card reader, keypad access

Hood: Primed galvanized or stainless steel mill finish or clear anodized aluminum

Fascia or back hoods: Primed galvanized or stainless steel, mill finish or clear anodized aluminum

Optional guide finishes: clear or bronze anodized, stainless steel

PowderGuard® premium powder coat paint finish in approximately 200 standard colors, or color-matched to specification available on hood, curtain, bottom bar, guides, headplates. For a smooth, durable finish consider powder coat to match aluminum clear or bronze anodized.

PowderGuard® Zinc and PowderGuard® Textured finishes

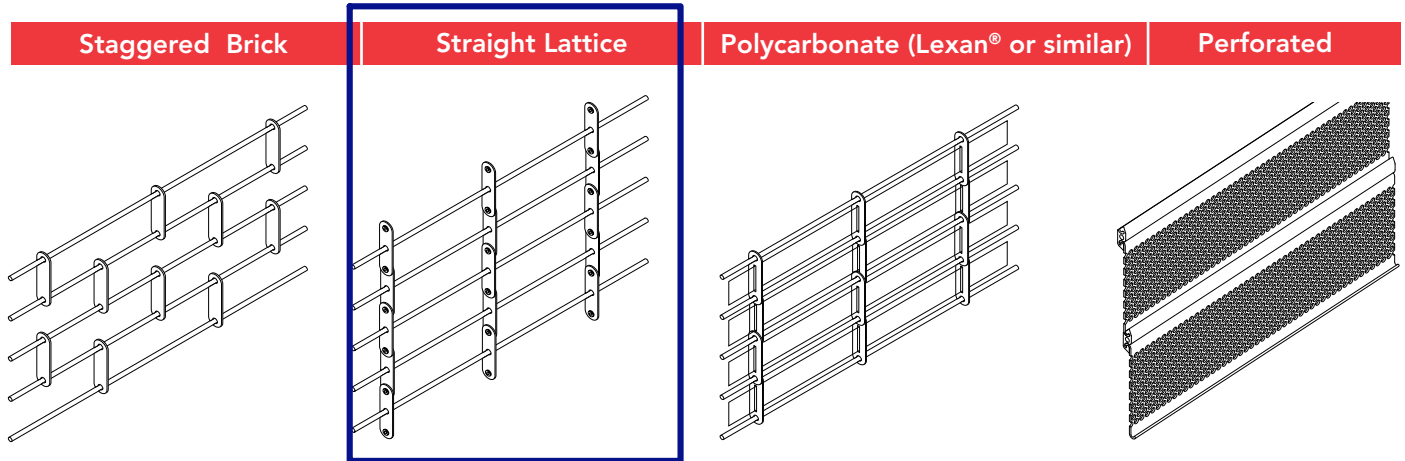
Heavy usage package (670, 671)

Locking options include cylinder locks, slide bolts (670, 671), security rods (670, 671), interlocks

Fire retardant polycarbonate panels



Grille Patterns



Note: These products allow air infiltration and are not weather tight.

Benefits

Choice of aluminum, galvanized or stainless steel

The Model 670 features an aluminum curtain, with optional fire-retardant polycarbonate inserts.

The Model 671 is fabricated of galvanized steel. Stainless steel and fire retardant polycarbonate inserts are also options. The standard curtain pattern for both the Model 670 and 671 is a straight lattice configuration. A staggered brick design is optional.

The Model 674 features a perforated aluminum curtain that provides increased security, visibility and light infiltration in an attractive design. Ideal for interior applications, the aluminum construction of the Model 674 is lightweight - while the perforated design enhances security without hindering air infiltration and visibility.

High-performance, low maintenance

The counterbalance assembly features heavy-duty helical torsion springs in a steel tube or pipe barrel to provide long and reliable service. Guides feature silicon woolpile strips or PVC inserts for ease of operation and noise reduction. Surfaces are factory pre-finished to minimize field preparation and enhance the durability of the finish. Optional crank or electric motor further simplifies grille operation. An optional heavy usage package (670, 671) provides extended life in applications requiring higher cycles, such as parking garages and service access gates.

Optional electric operation

Available with an electric operator to provide automatic passage for a variety of commercial and industrial uses, including schools, hospitals, libraries, public access buildings and parking garages.

Our commercial operators are designed to work with these grilles to ensure precise, smooth and safe operation.

Options include:

- Entrapment protection, including monitored photocells or monitored safety edge
- Emergency egress operator allows for remote activation and notification of power failure
- Push-button, key or combination stations; surface or flush-mounted for interior or exterior locations
- Vehicle detectors, key card readers, door timer controls
- Treadle or pull-switch stations
- Keypad entry

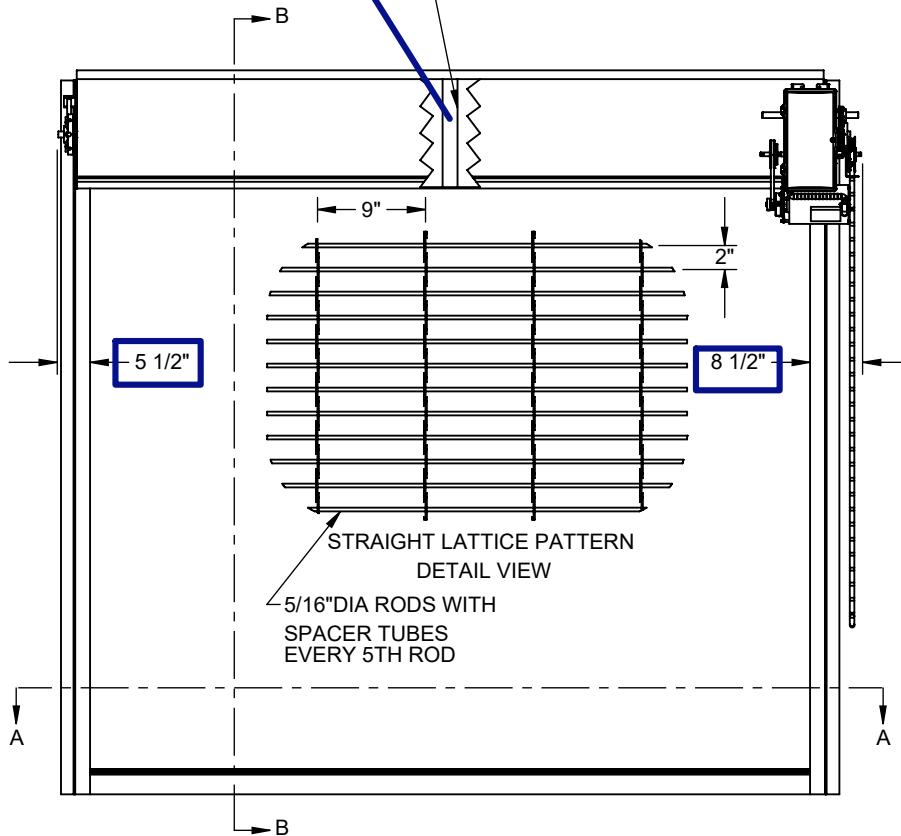
Emergency egress options

For public building applications an emergency egress may be necessary to prevent entrapment in the event of emergency or power failure. Hospitals, schools, office buildings and libraries are ideal for adding this safety option to the door system. In the event of an alarm condition or power failure, the emergency egress operator option allows for safe pedestrian exit. This feature avoids entrapment as well as provides immediate access to emergency personnel. We offer two ways to implement the emergency egress option. Both methods meet IBC 2018 402.8.8 Security Grilles and Doors, IBC 2018 1010.1.4.5 Security Grilles, and DASMA TDS355 Access Controlled Egress Doors standards. One option is the auto unlock and auto release option using an egress electric operator system designed specifically to work with Overhead Door™ emergency egress (670, 671). The other option is the auto unlock and manual release which can be operated with standard and heavy-duty Overhead Door® commercial operators.

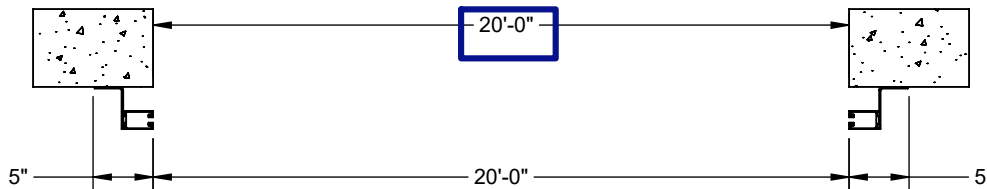
Please ensure proper backing for hood support.

1 HOOD SUPPORT, CENTERED IN HOOD. BACKING BY GEN. CONTRACTOR

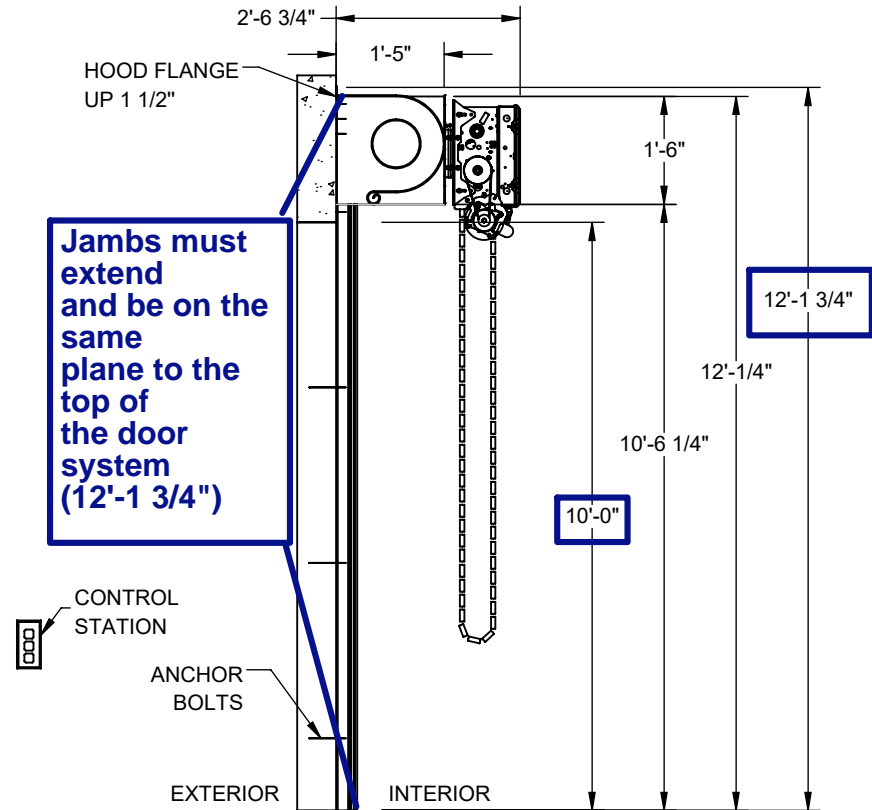
Garage Entry



ELEVATION

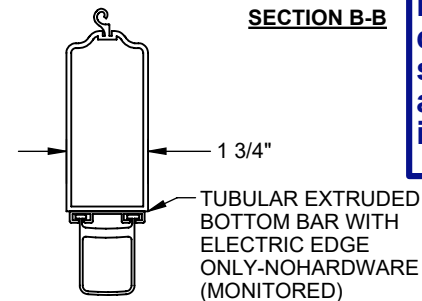


SECTION A-A



Jambs must extend and be on the same plane to the top of the door system (12'-1 3/4")

No specific jamb or head detail provided in current set, please provide additional information when available.



BOTTOM BAR SECTION

MODEL 670 ROLLING GRILLE DOOR
The Genuine. The Original.

DOOR MARK: Garage Entry
JOB NAME: Triad Construction / Vienna Market
ARCHITECT: -
CONTRACTOR: Triad Construction
DISTRIBUTOR: Overhead Door Company of Washington DC

OPENING WIDTH: 20'-0"
NOTES:

OPENING HEIGHT: 10'-0"
QUANTITY: 1
SHEET 1 OF 2
DATE: 05/20/2026 08:23 AM EST
QUOTE/ORDER#: SQHD027155-1
LINE #: 1



SPECIFICATIONS

CURTAIN	ALUMINUM, STRAIGHT LATTICE, MILL FINISH
MAIN SPACER MAT.	ALUMINUM
END SPACER MAT.	ALUMINUM
BOTTOM BAR	TUBULAR EXTRUDED, ALUMINUM, MILL FINISH
LOCK	NONE
ROUND HOOD	18 GA. ALUMINUM, MILL FINISH
FASCIA	NONE
GUIDES	ALUMINUM, MILL FINISH
BRACKET	1/4" STEEL, HEAVY DUTY BEARINGS, POWDER COAT-BLACK
PIPE	1" DRIVE SHAFT 100,000 CYCLES SPRINGS, HEAVY DUTY BEARINGS
INTERLOCK(S)	NONE

Please confirm incoming power.
 120v Single Phase __ 208V Three Phase __
 208v Single Phase __ 230v Three Phase __
 230v Single Phase __ 460v Three Phase __

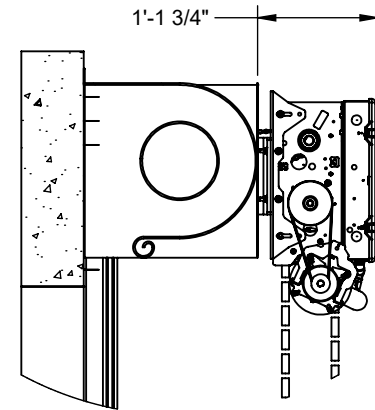
MOTOR UNIT

1/2 HP, 208/230/460V 3PHASE 60HZ,
 3.0/3.0/3.0 FLA

RSX MOTOR OPERATOR, HOIST, 24 VDC DISC-TYPE BRAKE, ELECTRO-MECHANICAL LIMIT SWITCH ADJUSTMENT, ELECTRONIC CONTROL BOARD WITH LCD DISPLAY, ON-BOARD OPEN/CLOSE/STOP FUNCTION, BUILT IN RADIO RECEIVER, CYCLE COUNTER, MAXIMUM RUN TIMER, DELAY ON REVERSE, AUTO TENSIONING BELT, THERMAL OVERLOAD PROTECTION SYSTEM, CONTINUOUS DUTY MOTOR RATED 60 CYCLE PER HOUR, PUSH BUTTON (OPEN/CLOSE/STOP) , EDGE INTERFACE 2-WIRE.

ACCESSORIES

2-WIRE MONITORED EDGE, (1) DETECTOR, LOOP, 12-220V.
 Heavy Duty Photo-Eyes



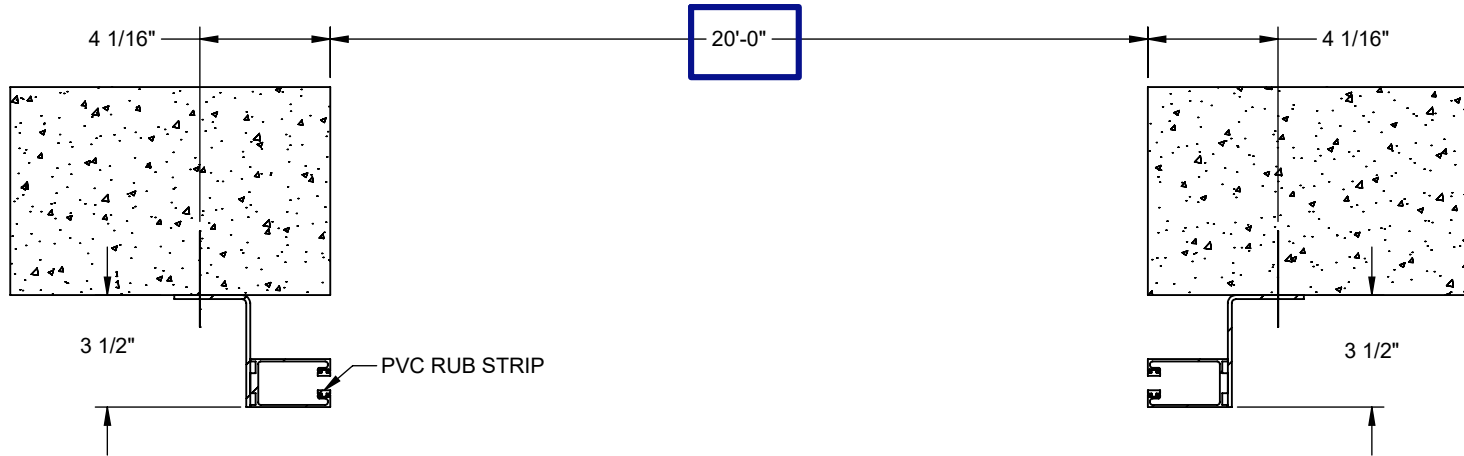
MOTOR DETAIL

GUIDE DETAILS

WALL ANGLE
 3.5x2.5x.200
INNER ANGLE
 NONE
OUTER ANGLE
 GRL EXTR.

WALL FASTENERS

ANCHOR BOLTS
 3/8" DIA, 36" ON CENTER
 2-3/8" MIN. EMBEDMENT
 DEPTH



INTERIOR FACE MOUNT Z GUIDE ON CONCRETE JAMB

EST. SHIPPING WEIGHT 1050 LBS
MODEL 670 ROLLING GRILLE DOOR
The Genuine. The Original.

DOOR MARK: Garage Entry
JOB NAME: Triad Construction / Vienna Market
ARCHITECT: -
CONTRACTOR: Triad Construction
DISTRIBUTOR: Overhead Door Company of Washington DC

OPENING WIDTH: 20'-0"
OPENING HEIGHT: 10'-0"
NOTES:

QUANTITY: 1
 SHEET 2 OF 2
DATE: 05/20/2026
 08:23 AM EST
QUOTE/ORDER#:
 SQHD027155-1
LINE #: 1