



THE INFORMATION, DESIGN, AND CONTENT OF THESE DRAWINGS AND/OR DOCUMENTS HERETO ARE PROPRIETARY TO VIKIA VIRGINIA, L.L.C. AND CONSTITUTE ITS PROPRIETARY INTELLECTUAL PROPERTY. THESE DRAWINGS AND/OR DOCUMENTS MUST NOT BE DIGITALLY FORWARDED, SHARED OR COPIED, DIGITALLY CONVERTED, MODIFIED, OR USED FOR ANY DESIGN PURPOSE, IN ANY FORMAT, WITHOUT PRIOR WRITTEN AUTHORIZATION FROM VIKIA VIRGINIA, L.L.C. VIOLATIONS MAY RESULT IN PROSECUTION. ONLY APPROVED, SIGNED AND SEALED PLANS OR DRAWINGS MAY BE UTILIZED FOR RECORDING AND/OR CONSTRUCTION PURPOSES.

© 2021 VIKI VIRGINIA, L.L.C. V 12.00

[illegible]

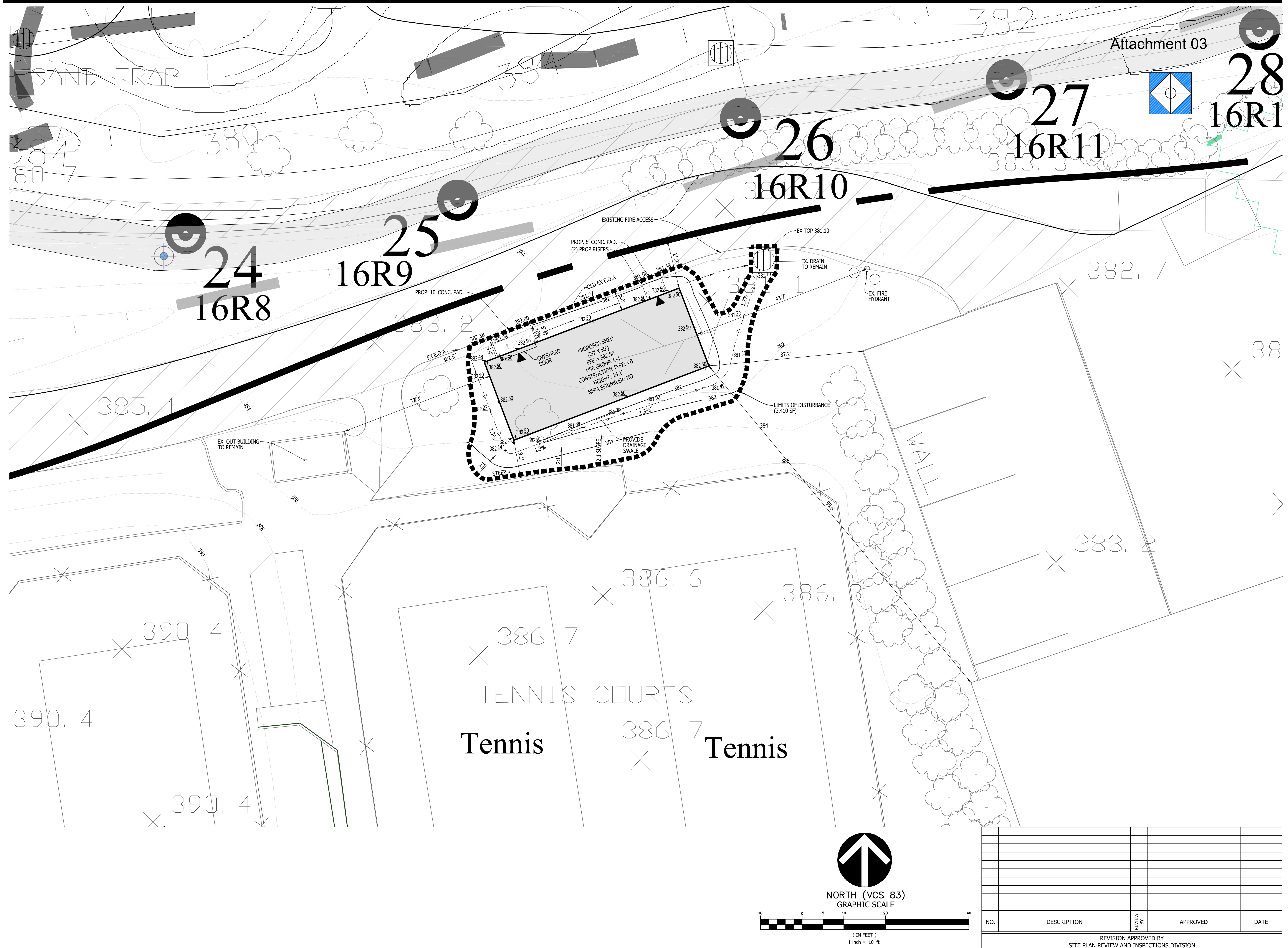
PROFESSIONAL SEAL



WESTWOOD
COUNTRY CLUB STORAGE
SHED
DISTRICT
FAIRFAX COUNTY, VIRGINIA

ENGINEERING SKETCH

DRAWN BY:	PNN
DESIGNED BY:	JDA / ATL
DATE ISSUED:	07/01/2024
DWG. SCALE:	1" = 10'
VIA NO.	VV7461E
SHEET NO.	03





THE INFORMATION, DESIGN, AND CONTENT OF THESE DRAWINGS AND/OR DOCUMENTS HERETO ARE PROPRIETARY TO VIKA VIRGINIA, L.L.C. AND CONSTITUTE ITS PROPRIETARY INTELLECTUAL PROPERTY. THESE DRAWINGS AND/OR DOCUMENTS MUST NOT BE DIGITALLY FORWARDED, SHARED OR COPIED, DIGITALLY CONVERTED, MODIFIED, OR USED FOR ANY DESIGN PURPOSE, IN ANY FORMAT, WITHOUT PRIOR WRITTEN AUTHORIZATION FROM VIKA VIRGINIA, L.L.C. VIOLATIONS MAY RESULT IN PROSECUTION. ONLY APPROVED, SIGNED AND SEALED PLANS OR DRAWINGS MAY BE UTILIZED FOR RECORDING AND/OR CONSTRUCTION PURPOSES.

© 2021 VIKI VIRGINIA, L.L.C. V 12.00

[illegible]

PROFESSIONAL SEAL



WESTWOOD
COUNTRY CLUB STORAGE
SHED
DISTRICT
FAIRFAX COUNTY, VIRGINIA

DRAWN BY:	PNN
DESIGNED BY:	JDA / ATL
DATE ISSUED:	07/01/2024
DWG. SCALE:	1" = 10'
VIKA NO.	VV7461E
SHEET NO.	02

