

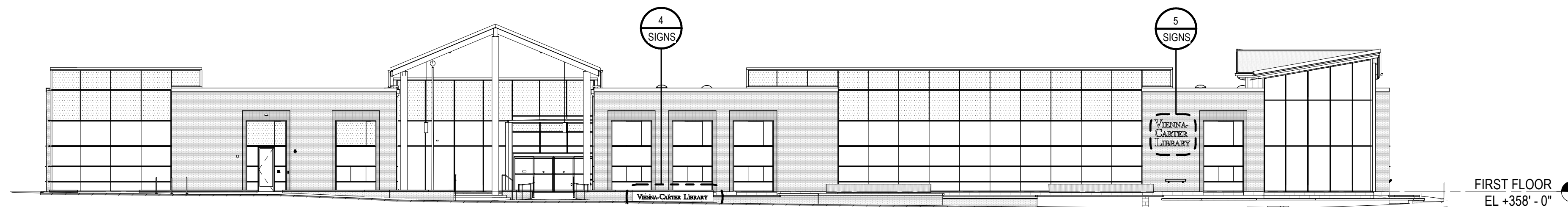
SIGN CARVED INTO  
CAST STONE



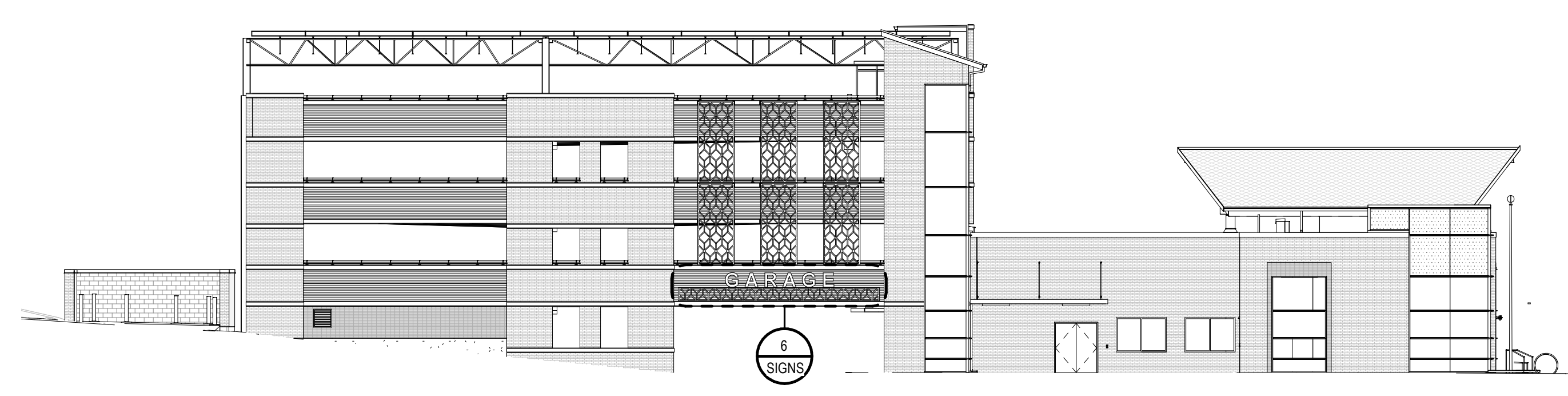
View toward the Maple Avenue entrance



Aerial view



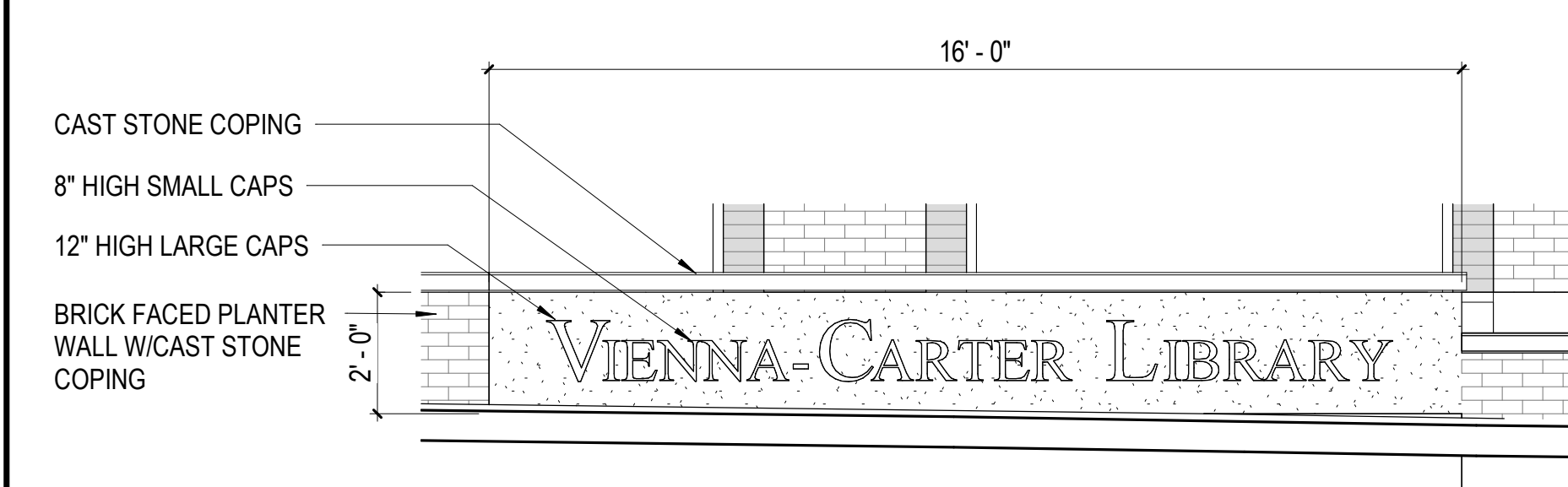
1 REFERENCE ELEVATION - MAPLE AVENUE  
 SIGNS SCALE: 1/16" = 1'-0"



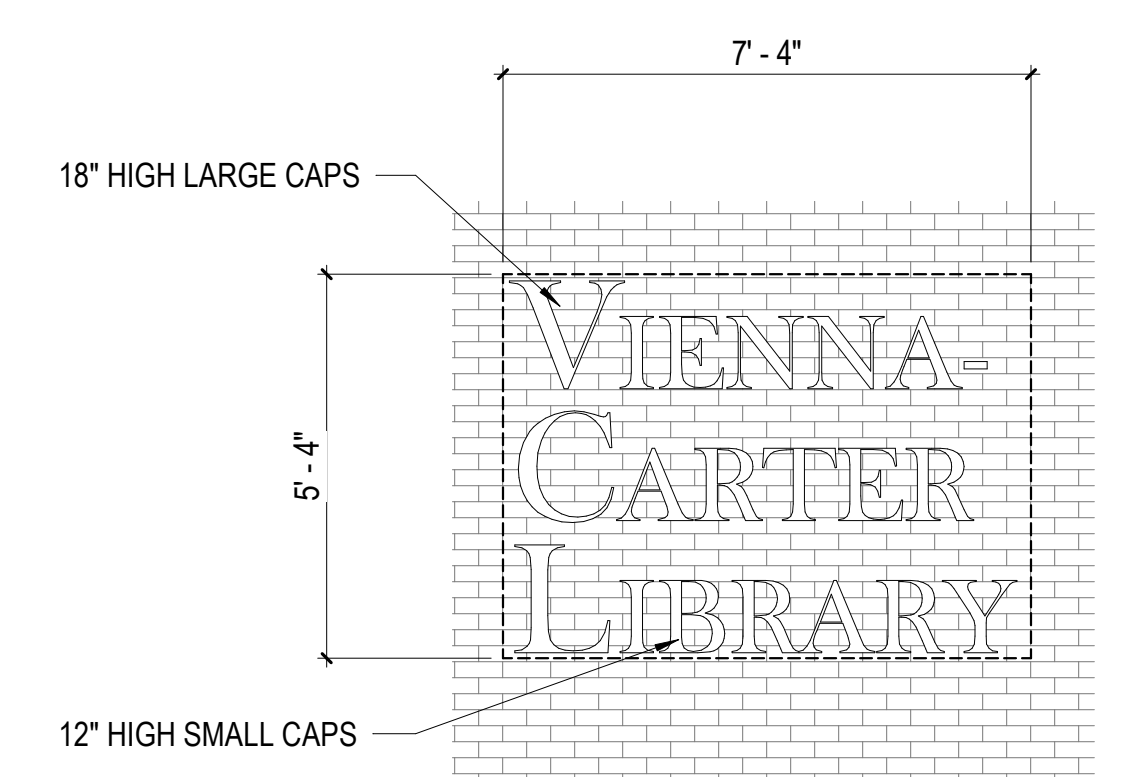
3 REFERENCE ELEVATION - NORTHEAST FACADE  
 SIGNS SCALE: 1/16" = 1'-0"



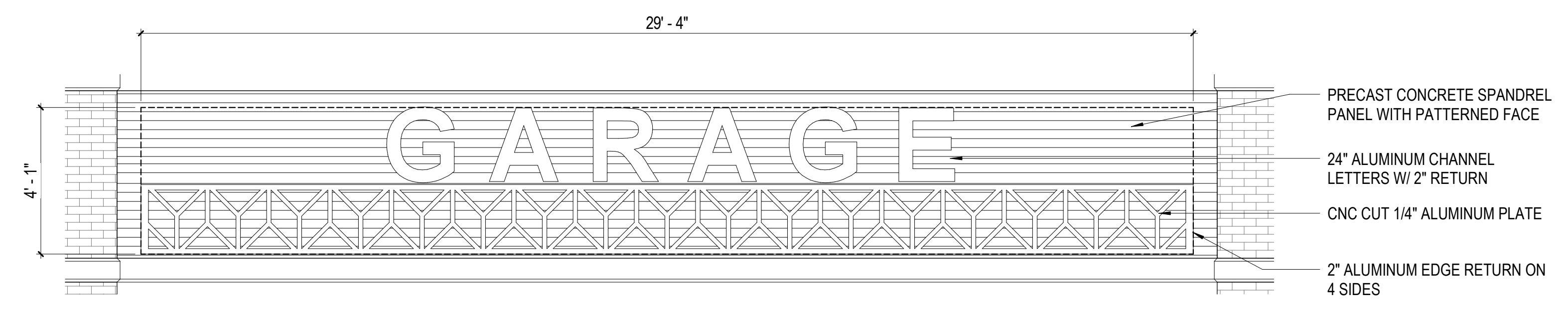
2 REFERENCE ELEVATION - CENTER STREET  
 SIGNS SCALE: 1/16" = 1'-0"



4 CAST STONE BUILDING SIGN  
 SIGNS SCALE: 3/8" = 1'-0"  
 CAST STONE PANEL(S) WITH ENGRAVED LETTERS



5 CUT LETTER BUILDING SIGN  
 SIGNS SCALE: 3/8" = 1'-0"  
 1/2" THICK ALUMINUM CUTOUT LETTERS, CONCEALED STUD MOUNTING TO FACE BRICK



6 UPRIGHT CHANNEL LETTER GARAGE SIGN  
 SIGNS SCALE: 3/8" = 1'-0"  
 ALUMINUM CHANNEL LETTERS W/ 2" RETURN EDGES MOUNTED ON ALUMINUM CUTOUT PANEL STUD ATTACHED TO GARAGE PRECAST CONCRETE SPANDREL PANEL



MARK	DATE	BY	DESCRIPTION

DATE	PROJECT	DESIGNED	DRAWN	AUTHOR	CHECKER
04.05.2024	21115-00	Designer			

**RRMM ARCHITECTS, PC**  
 2900 South Quincey Street, Suite 710  
 Arlington, Virginia 22206  
 (703) 998-0101

COMMONWEALTH OF VIRGINIA  
 ARCHITECT  
 KEITH DOUGLAS LEONARD  
 Lic. No. 013302  
 04/12/2024

PROJECT: Fairfax County Board of Supervisors  
**PATRICK HENRY LIBRARY AND GARAGE**  
 101 Maple Ave. East  
 Vienna, VA 22180

DRAWING: **SIGNAGE DRAWINGS**

SHEET  
**SIGNS**

9/23/2024 2:28:52 PM    BM 360/21115-00 Patrick Henry Library/21115-00-01 Patrick Henry Library - ARCH.rvt

