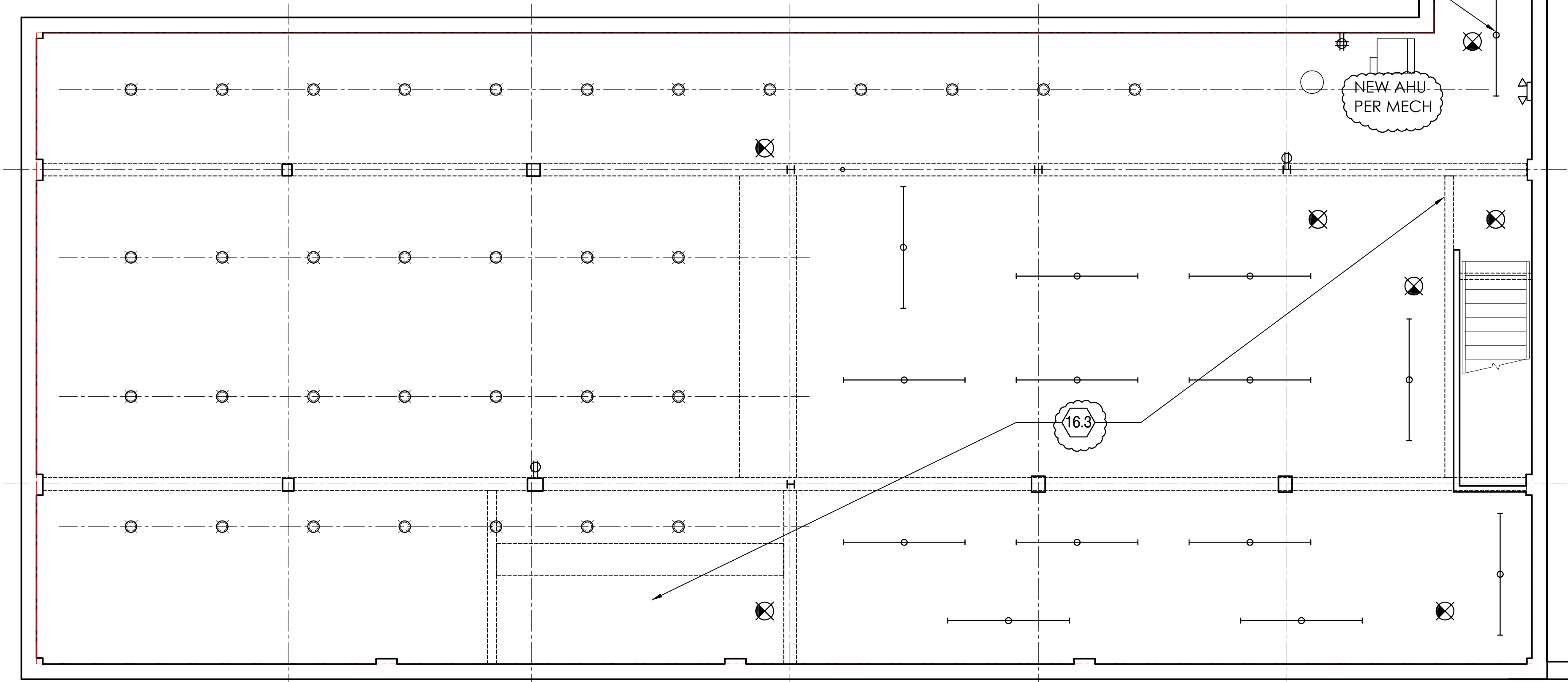
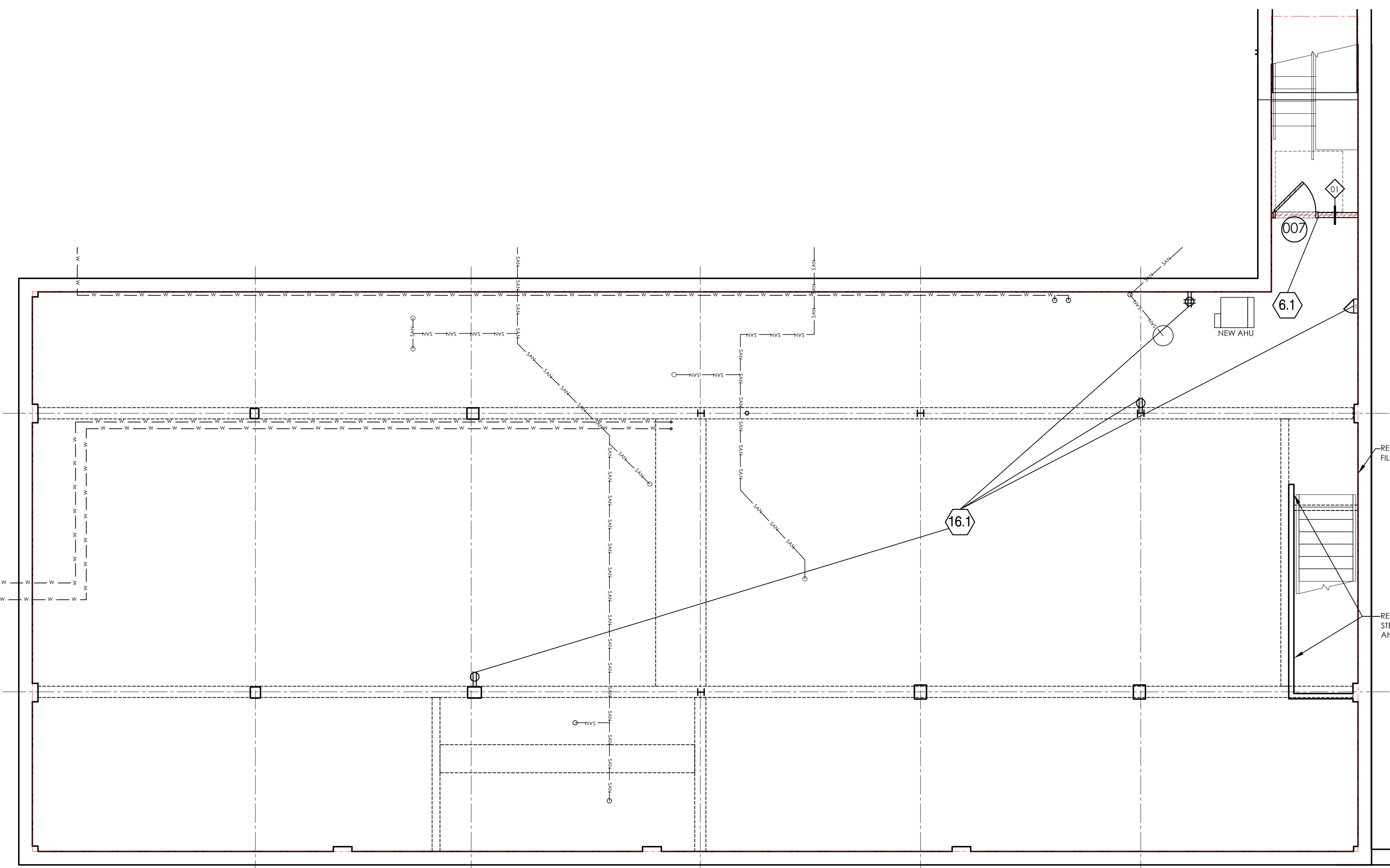


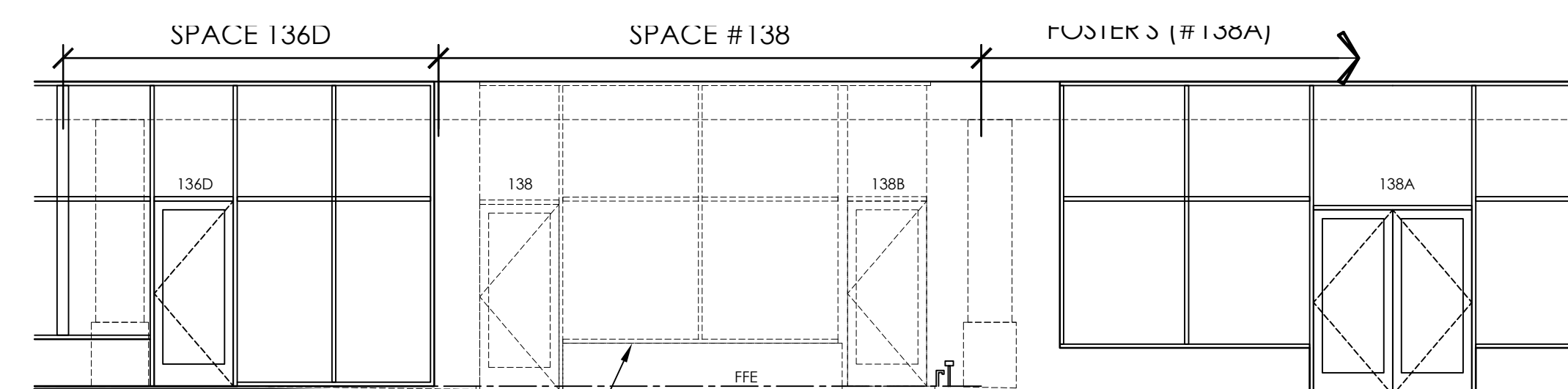
Attachment 5



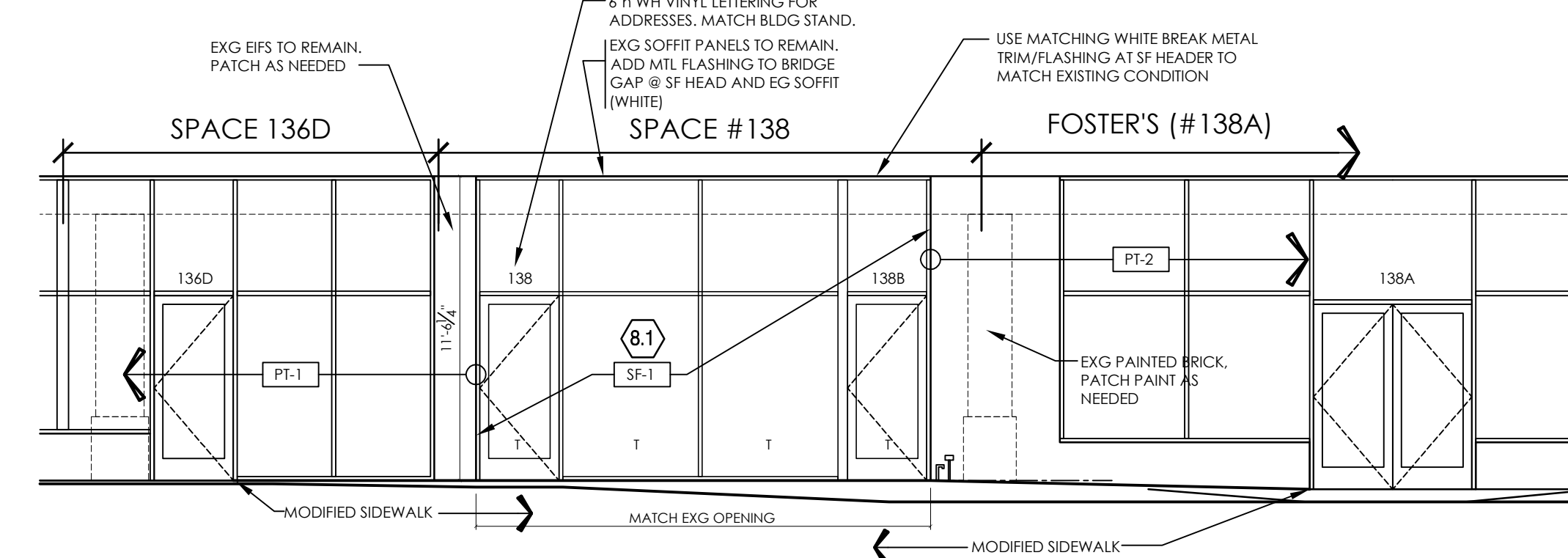
04 BASEMENT RCP
scale: 3/16"=1'-0"



03 BASEMENT PLAN
scale: 3/16"=1'-0"



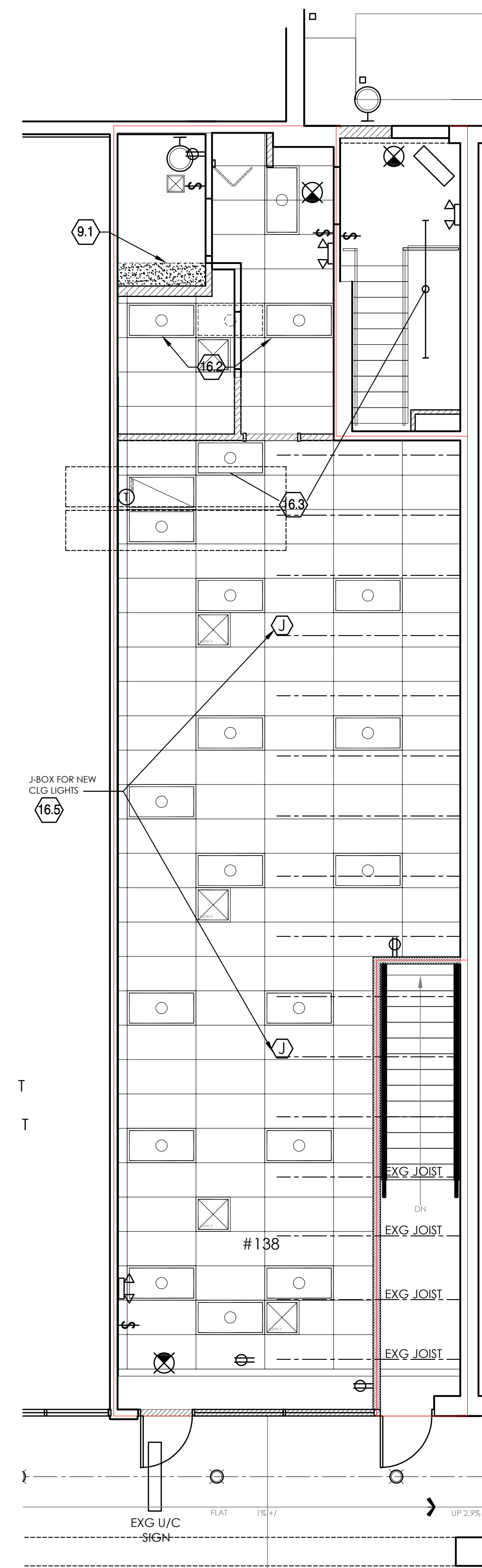
05 SF ELEVATION - DEMO
scale: 3/16"=1'-0"



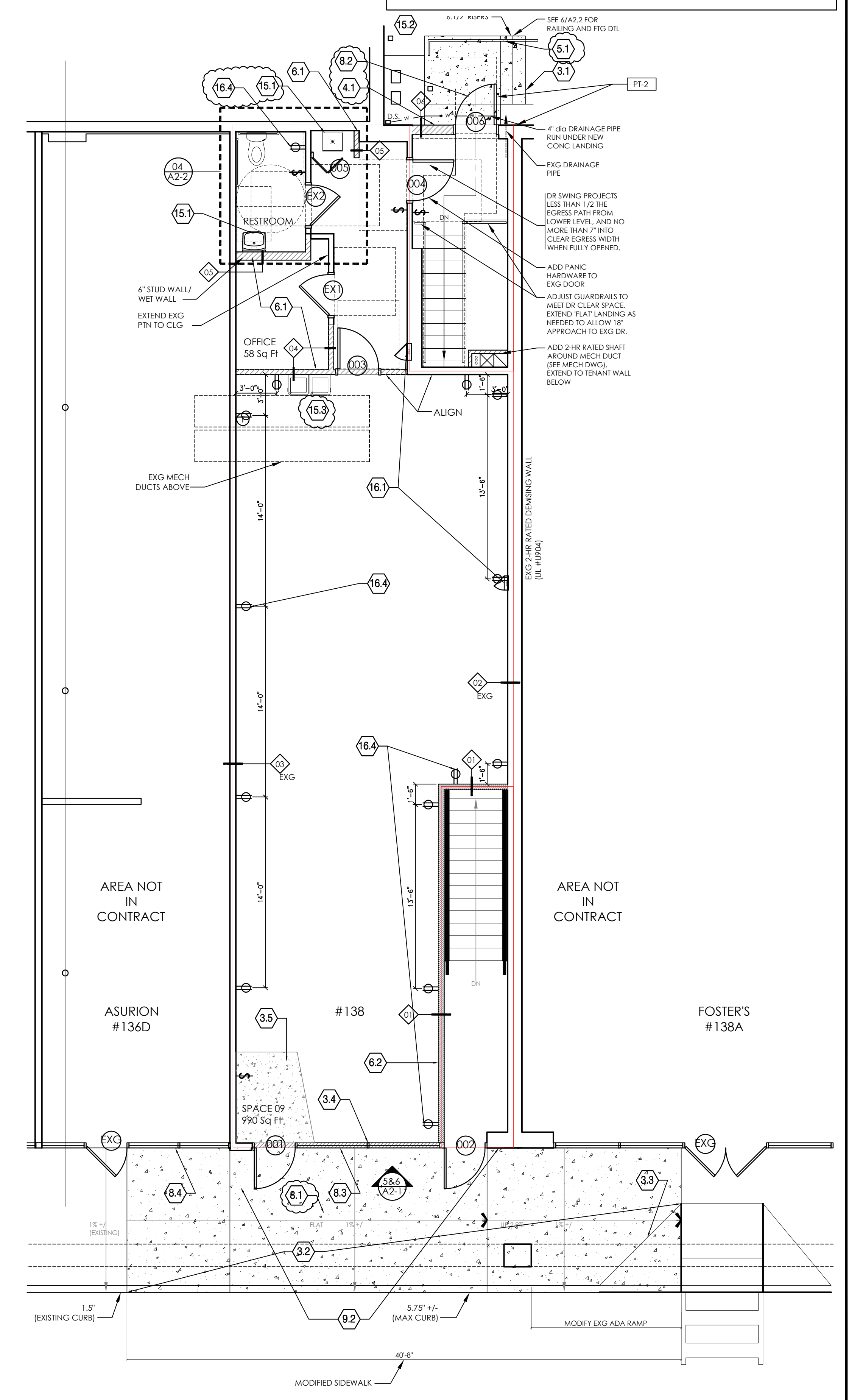
06 SF ELEVATION - NEW
scale: 3/16"=1'-0"

ID	DESCRIPTION	MANUFACTURER	COLOR	REMARKS
SP-1	CONCRETE TRAP (45.1)	KAMMER	HUNTER GREEN	REWORKING (EXCEPT USE 1/2\"/>

07 FINISH SCHEDULE
scale: NTS



02 RCP
scale: 3/16"=1'-0"



01 FLOOR PLAN
scale: 3/16"=1'-0"

01 KEYED NOTES
USED ON THIS SHEET ONLY

- CONCRETE
 - 3.1 NEW CONCRETE PAD WITH STAIRS. SEE 3/A2.2
 - 3.2 RAISED SIDEWALK AT SPACE 11
 - 3.3 MODIFIED HANDICAP RAMP
 - 3.4 REPAIR SLAB AT REMOVED KNEE WALL
 - 3.5 RAISE EXG CONC FLOOR UP TO BE SMOOTH AND CONTIGUOUS WITH THE MAIN FLOOR SLAB.
- MASONRY
 - 4.1 INFILL CMU WALL
- METALS
 - 5.1 NEW HANDRAIL. SEE DTLS
- WOOD, PLASTICS, AND COMPOSITES
 - 6.1 NEW DEMISING WALL
 - 6.2 NEW PARTITION TYPE 2-HOUR
- THERMAL & MOISTURE PROTECTION
 - 7.1 PATCH & REPAIR ROOFING/INSUL. @ DEMO CONSTRUCTION & OPENINGS.
 - 7.2 TAPERED INSUL./CRICKETS, MIN 1/2" PER FT SLOPE
 - 7.4 EXISTING PARAPET TO REMAIN
 - 7.5 EXISTING ROOF DRAIN TO REMAIN
- DOORS & WINDOWS
 - 8.1 ALUMINUM STOREFRONT SEE FINISH SCHEDULE
 - 8.2 NEW EXTERIOR DOOR, SEE DOOR SCHEDULE
 - 8.3 NEW STOREFRONT AT FINISH FLOOR ELEVATION
 - 8.4 MODIFY EXISTING STOREFRONT/SLAB EDGE AS NECESSARY
- FINISHES
 - 9.1 EXTEND CLG FRAMING AND EXTEND GPDW CLG FINISH. PAINT CLG.
 - 9.2 REPAIR FACADE. USE PT-1 LEFT OF NEW STOREFRONT AND PT-2 FOR RIGHT & IN THE REAR FACADE.
- MECHANICAL & PLUMBING
 - 15.1 NEW SINK
 - 15.2 EXG GAS SERVICE TO REMAIN
 - 15.3 NEW HI/LO DRINKING FOUNTAIN. SEE PLUMB DWG.
- ELECTRICAL
 - 16.1 EXISTING GEAR TO REMAIN
 - 16.2 NEW LIGHTING, SEE ELECTRICAL DRAWING.
 - 16.3 EXG LIGHTING TO REMAIN
 - 16.4 NEW ELECTRICAL OUTLET (SEE LOCATIONS)
 - 16.5 NEW JUNCTION BOX FOR CEILING LIGHTS



DATE	ISSUE
8/05/22	PROGRESS SET
8/25/22	REVIEW SET
9/23/22	FOR PERMIT
11/23/22	BAR RESPONSE

