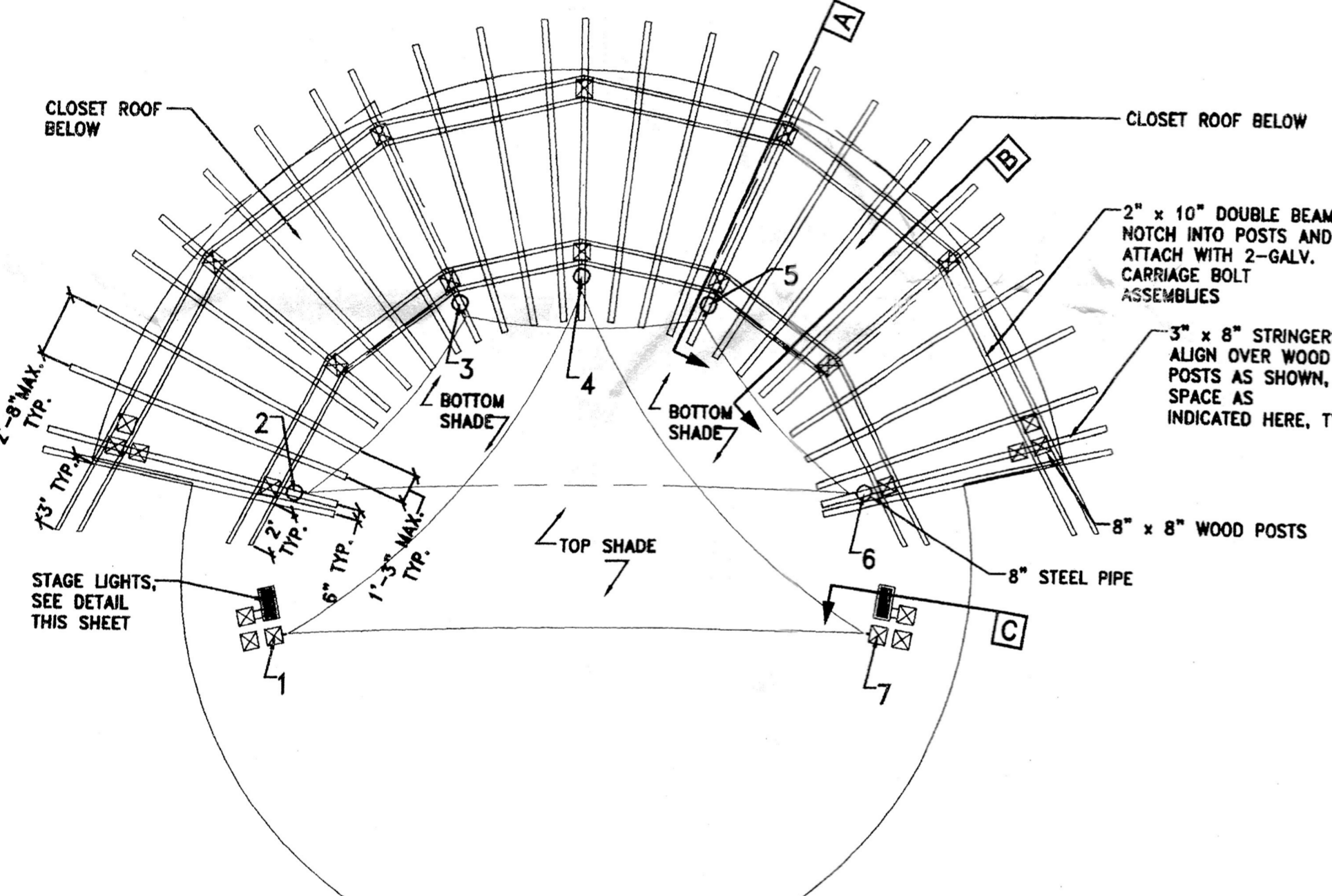
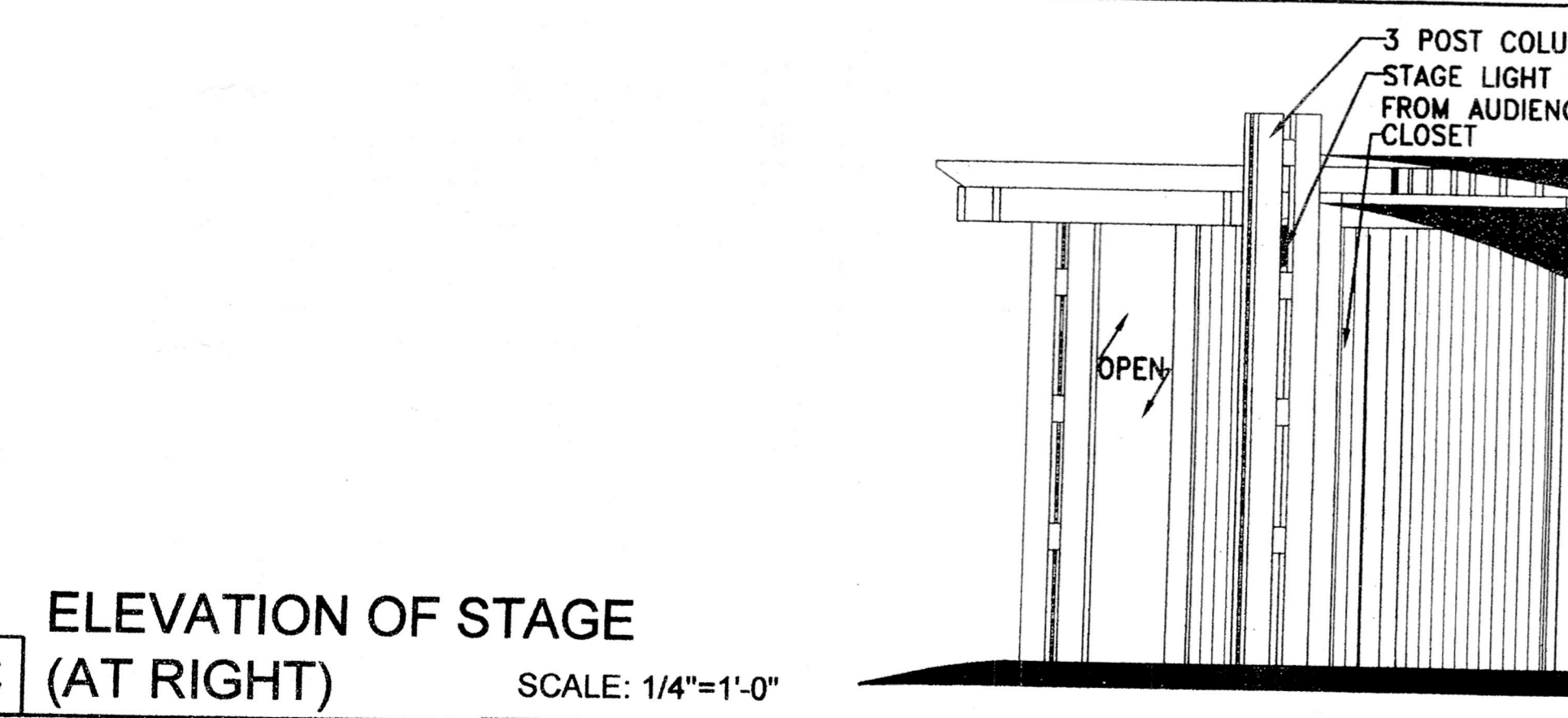


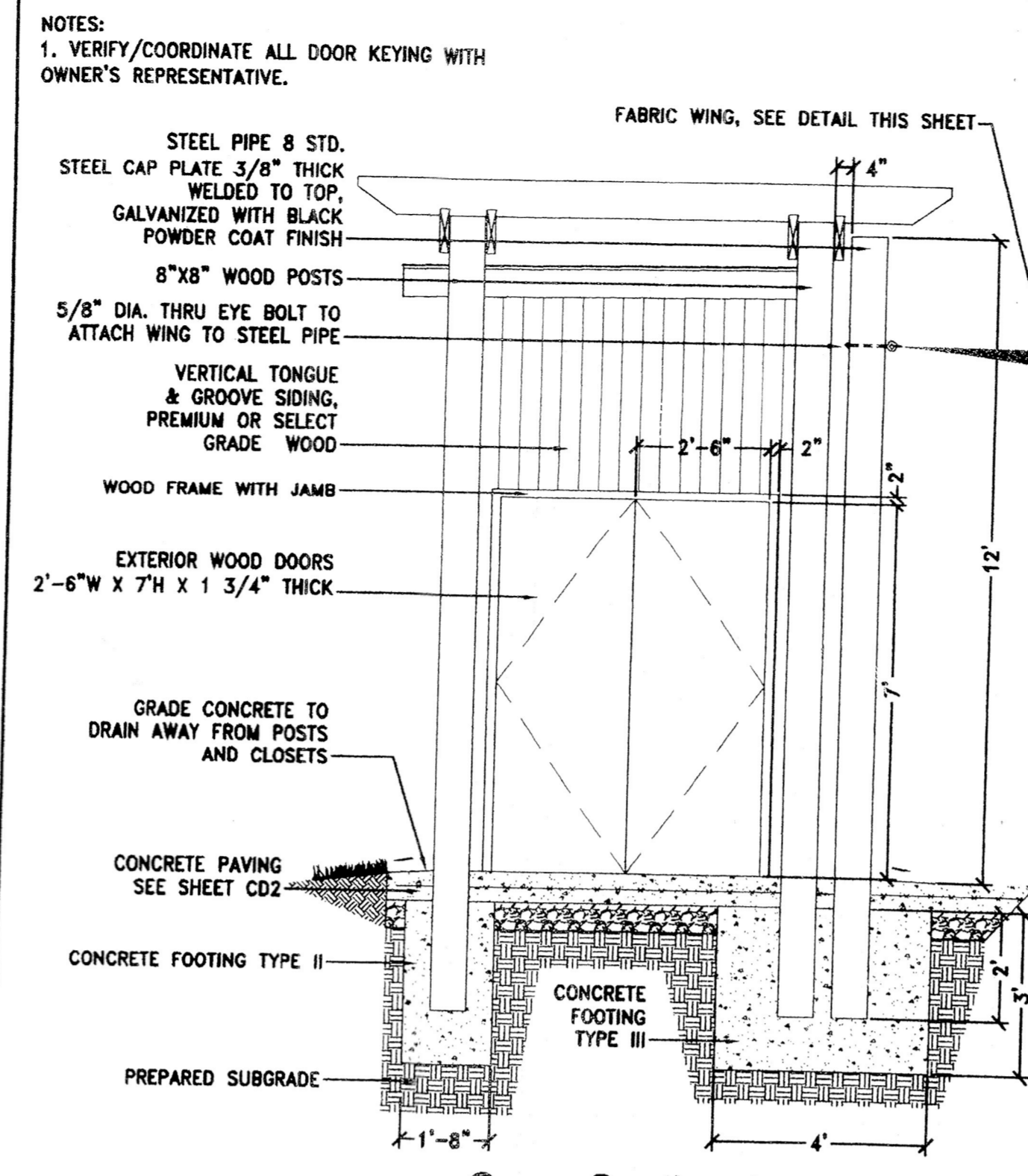
A STAGE LAYOUT & POST PLAN SCALE: 3/16"=1'-0"



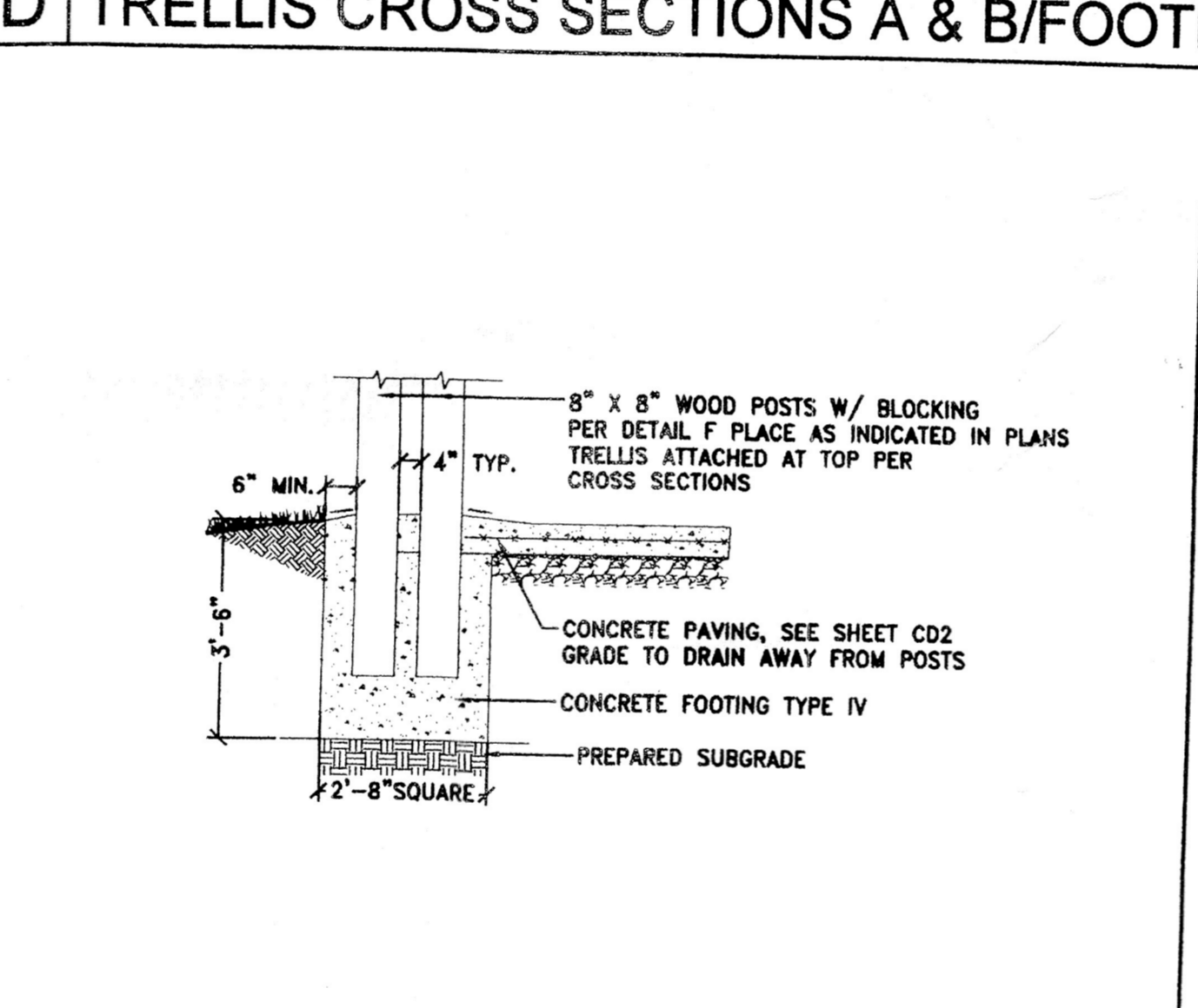
B TRELLIS FRAMING PLAN SCALE: 3/16"=1'-0"



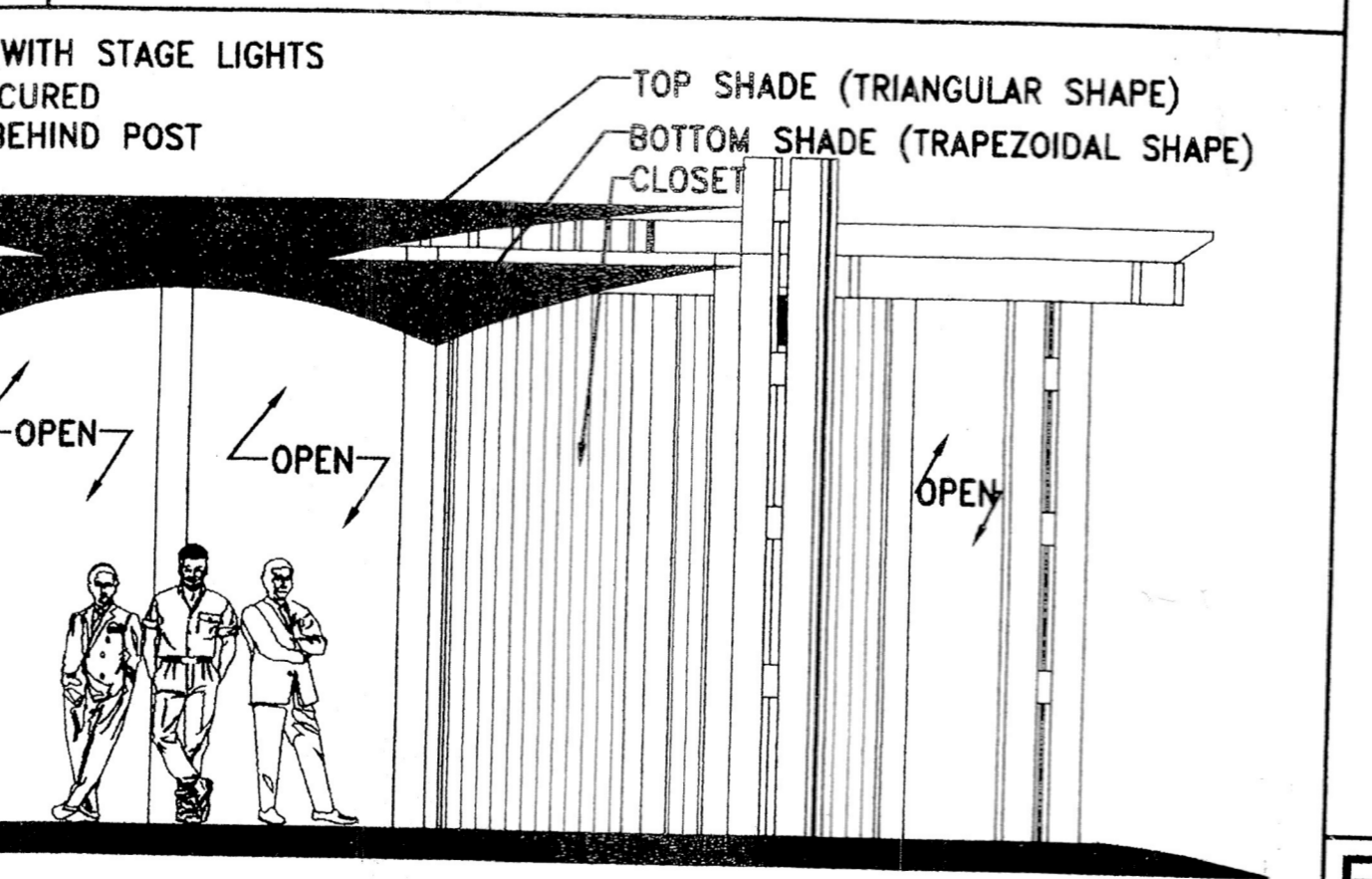
C ELEVATION OF STAGE (AT RIGHT) SCALE: 1/4"=1'-0"



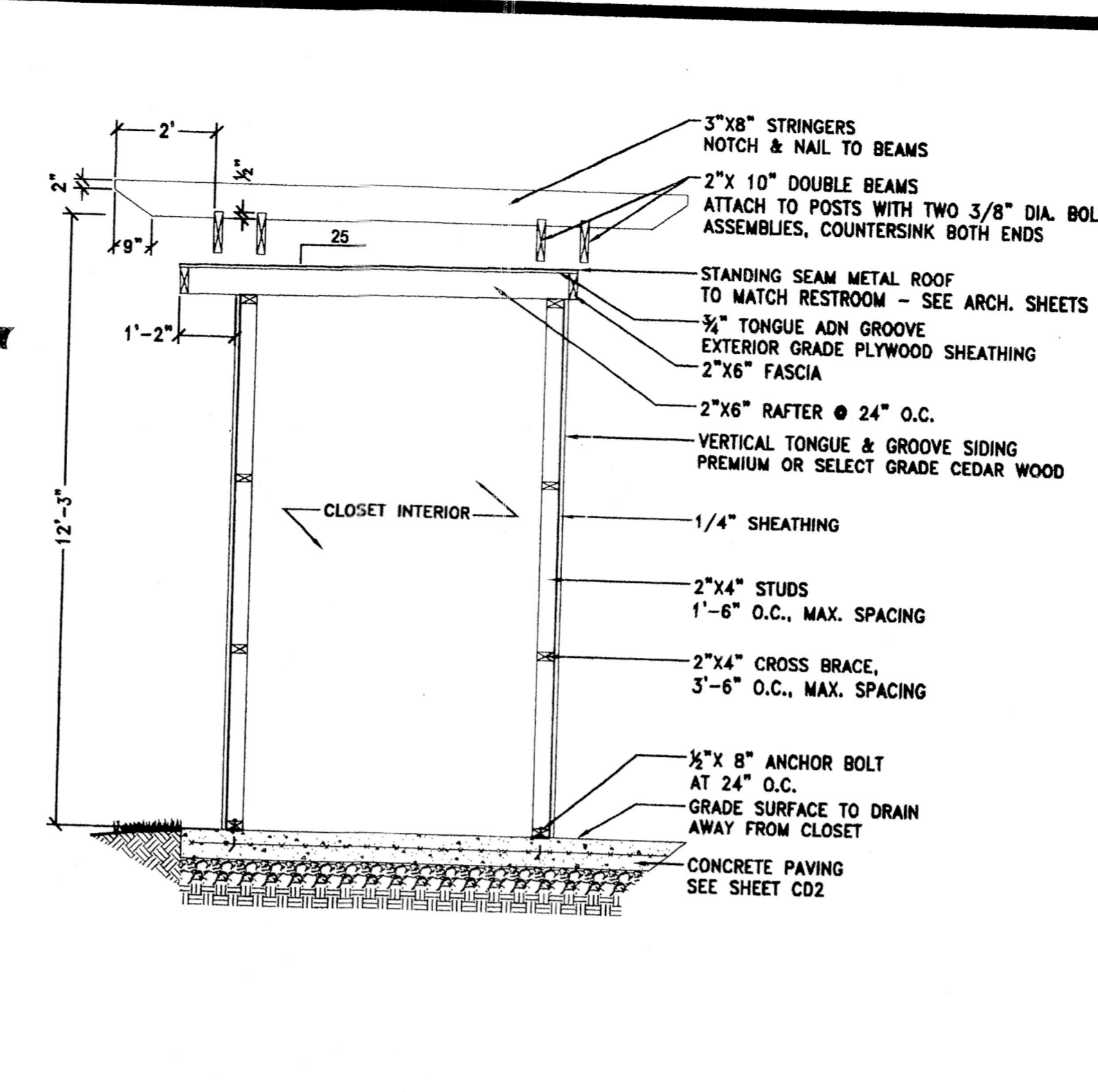
D TRELLIS CROSS SECTIONS A & B/FOOTING TYPE II & III SCALE: 3/8"=1'-0"



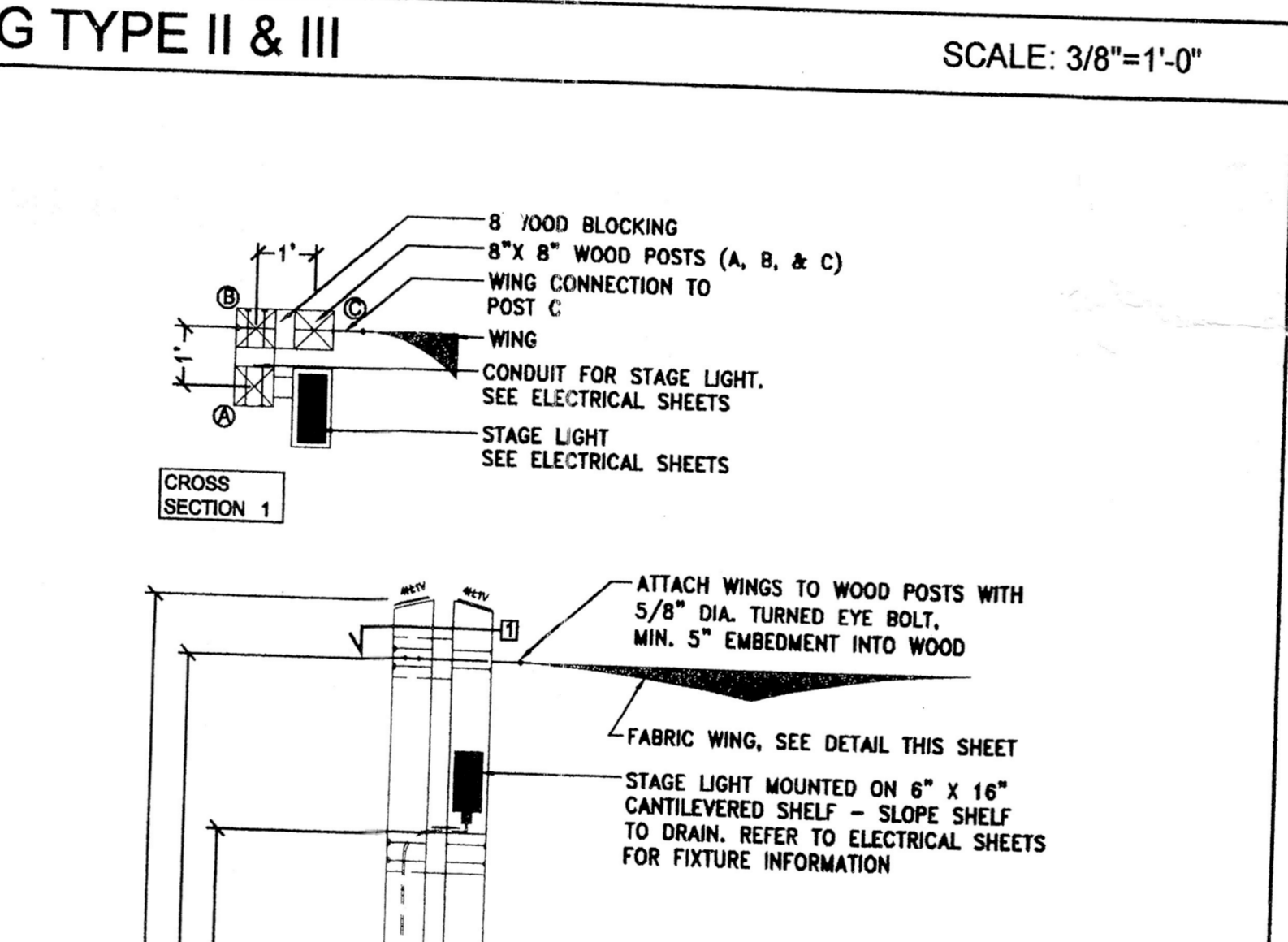
E FOOTING TYPE IV SCALE: 3/8"=10"



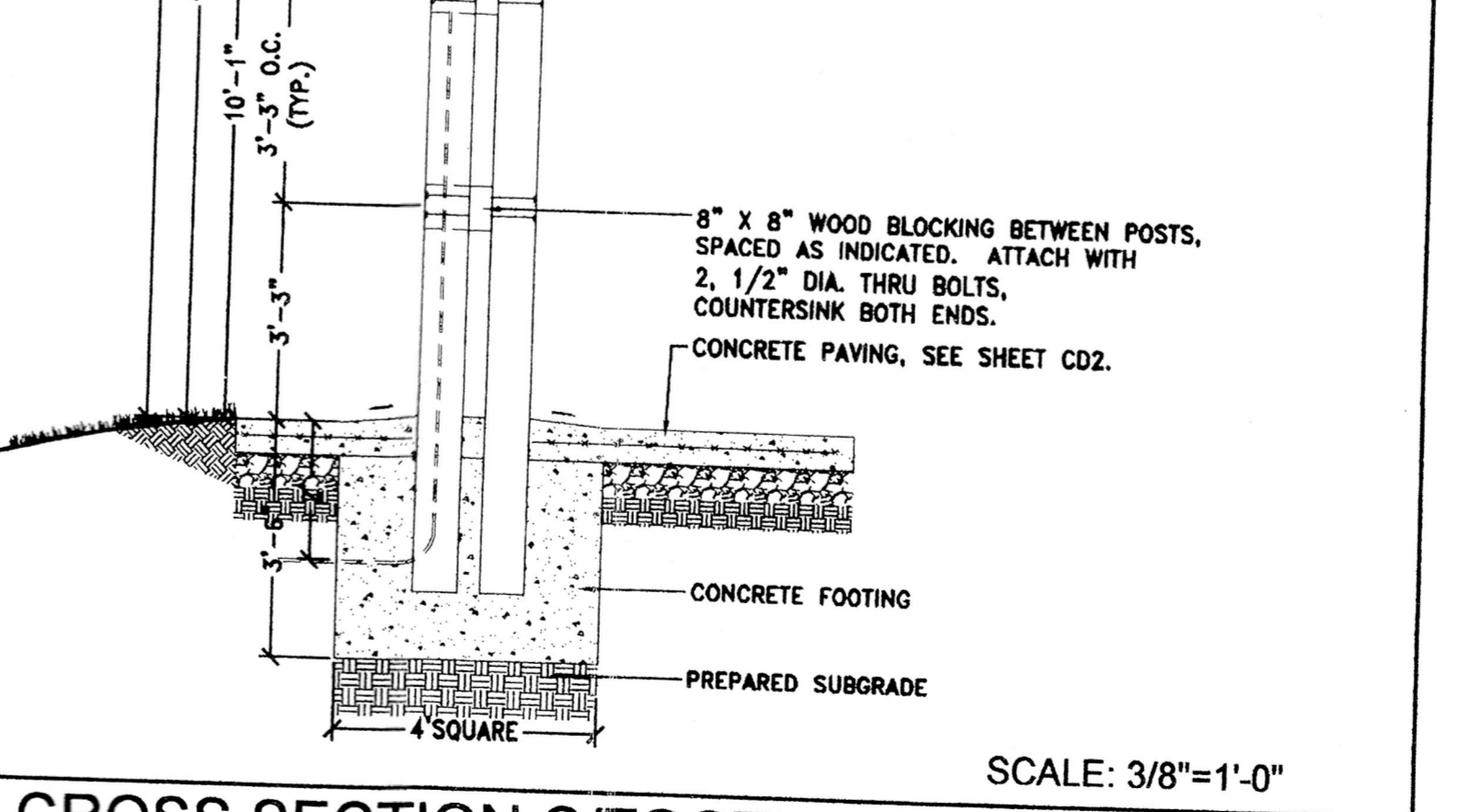
F CROSS SECTION C/FOOTING TYPE I SCALE: 3/8"=1'-0"



G STAGE PAVEMENT JOINTING PLAN SCALE: 3/16"=1'-0"



H ATTACHMENT 08



I WING ATTACHMENT SUMMARY

GENERAL NOTES:

- ALL WOOD MEMBERS SHALL BE NO. 2 OR BETTER CEDAR.
- ALL HARDWARE SHALL BE HOT-DIPPED GALVANIZED.
- REFER TO SHEET A3 FOR STRUCTURAL NOTES AND MATERIAL SPECIFICATIONS.
- TWO DETACHABLE FABRIC WINGS SHALL BE ATTACHED TO NUMBERED POSTS (1-7). FABRIC SHALL BE SUNBRELLA FIRE RESIST PLUS IN COLOR 9601 'ARCTIC BLUE' (OR APPROVED EQUAL). WINGS SHALL BE TRIANGULAR AND TRAPEZOIDAL IN SHAPE WITH STEEL RING AND QUICK LINK FASTENERS AS MANUFACTURED BY MOSS, INC., OR APPROVED EQUAL. SEE SUMMARY BELOW FOR LOCATION AND HEIGHT OF CONNECTIONS TO POST.
- REFER TO ELECTRICAL SHEETS FOR CLOSET AND STAGE LIGHTS.

WING	POST NUMBER	HEIGHT OF ATTACHMENT TO POLE
TOP, TRIANGULAR SHADE	1	13'-0"
	4	11'-0"
	7	13'-0"
BOTTOM, TRAPEZOIDAL SHADE	2	11'-9"
	3	10'-0"
	5	10'-0"
	6	11'-9"

CIVIL ENGINEER: **Wiley & Wilson** Employee-Owned
 6606 WEST BROAD STREET, SUITE 500
 RICHMOND, VIRGINIA 23230-1717
 804-254-7242 ph 804-254-7257 fax

LANDSCAPE ARCHITECT: LARDNER/KLEIN LANDSCAPE ARCHITECTS, PC
 814 KING ST., FOURTH FLOOR ALEXANDRIA, VA 22314-3039
 703-739-0972ph 1-800-337-1370ph 703-739-0973fax

CONSTRUCTION DOCUMENTS
DEPARTMENT OF PARKS AND RECREATION

DESIGNED: EL, VM
 DRAWN: GM
 TECH. REVIEW: EL, VM
 DATE: 03/15/2006

SUB SHEET NO. **CD4**

TITLE OF SHEET
TRELLIS DETAILS

VIENNA TOWN GREEN
 TOWN OF VIENNA

DRAWING NO. _____
 PKG. NO. _____ SHEET **23** OF 26