

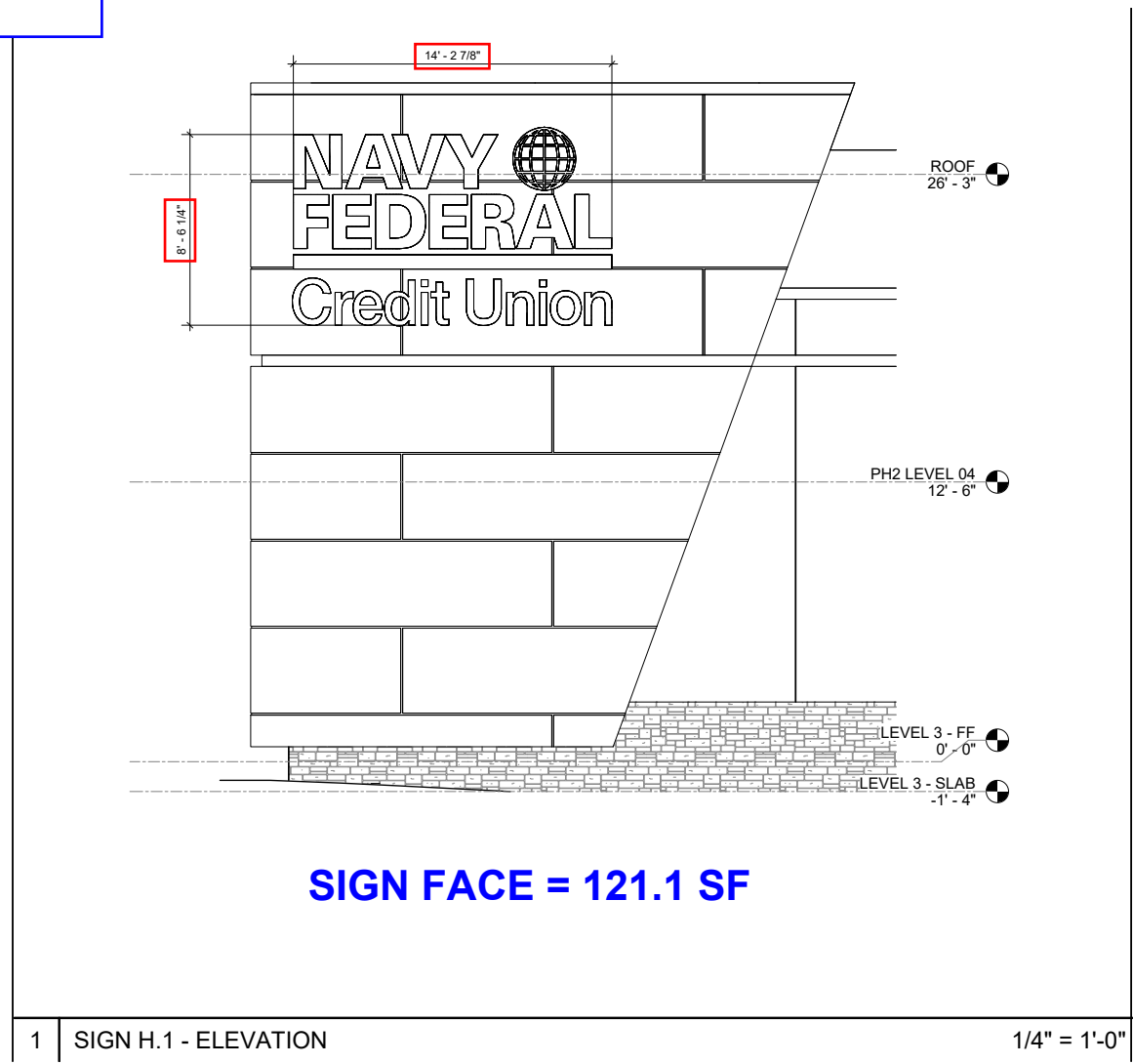
EXISTING BUILDING SIGNAGE LOCATION PLAN

PROPOSED BUILDING MOUNTED SIGNAGE	SF	SF	REFERENCE #
Proposed Building Signage NAVY FEDERAL CREDIT UNION OUR MEMBERS ARE THE MISSION	121.1 17.9		H.1 (D) J.1 (E)
TOTAL PROPOSED BUILDING MOUNTED SIGNAGE		139.1	

AREA CALCULATIONS

D

BUILDING SIGNAGE (QUANTITY: 1)



REFER TO SHEET SN5.01 FOR LOCATION

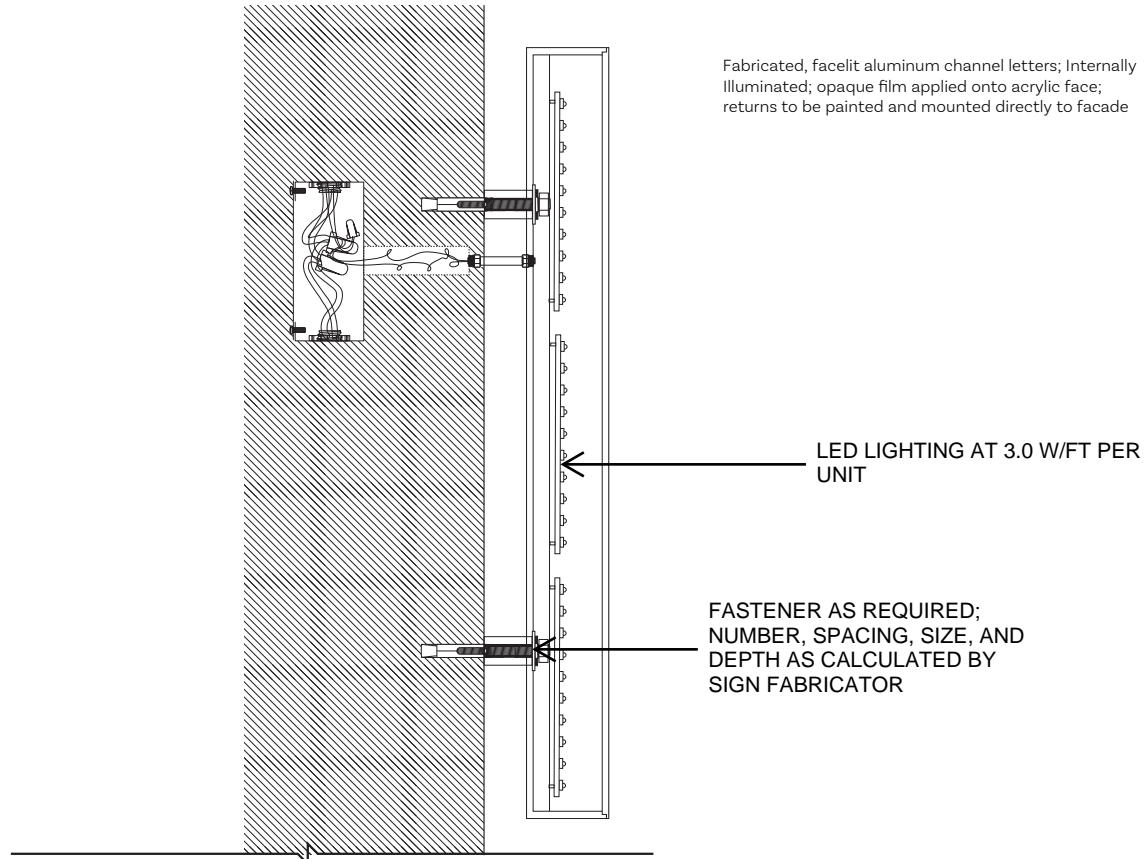
**SIGN CABINET DESIGN**  
FRONT-LIT CHANNEL LETTERS OF SHEET ALUMINUM WITH OPAQUE WHITE ACRYLIC LENS. CABINET COLOR: WHITE. FINAL CABINET DETAILS, MOUNTING, AND LIGHTING CIRCUITS TO BE PROVIDED BY SIGNAGE VENDOR.

**LIGHT TRANSMITTANCE**  
CHANNEL LETTERS TO HAVE LED UNITS EVENLY DISTRIBUTED.  
**TOTAL LUMENS = 32,679 (270 LUMENS/SF X 121.1SF)**

**REGARDING SAMPLES**  
THE SAMPLES PROVIDED FOR BAR REVIEW ARE REPRESENTATIVE OF THE BASIS OF DESIGN PRODUCT. THE SIGNAGE VENDOR WILL PROVIDE FINAL COLOR SAMPLES FOR REVIEW AND APPROVAL BY THE DESIGN TEAM.

**DESIGN INTENT**  
THIS NFCU LOGO SIGN IS INTENDED TO WELCOME VEHICULAR TRAFFIC ONCE THEY HAVE ALREADY ARRIVED ON CAMPUS. THIS SIGN IS NOT INTENDED TO BE SEEN FROM THE STREET, REFER TO PHOTOGRAPHS TAKEN FROM THE STREET LOOKING TOWARDS THE PROPOSED SIGN:

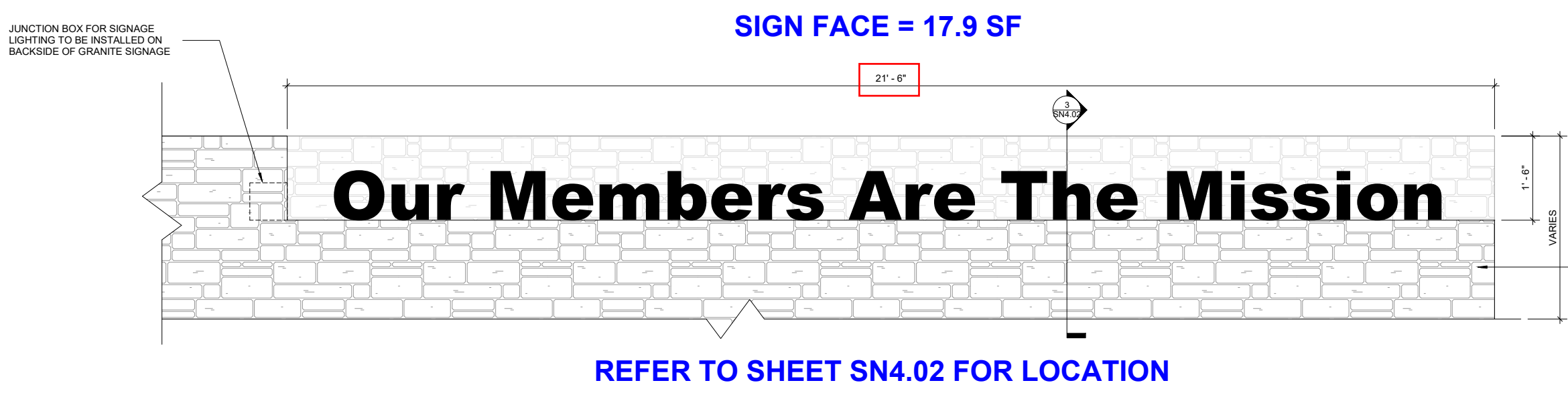
\*ALL LIGHTING FIXTURES ARE TO BE DIMMABLE AND 3500K



E

BUILDING SIGNAGE (QUANTITY: 1)

ARCHITECT'S DETAILS



REFER TO SHEET SN4.02 FOR LOCATION

MANUFACTURER DATA SHEETS



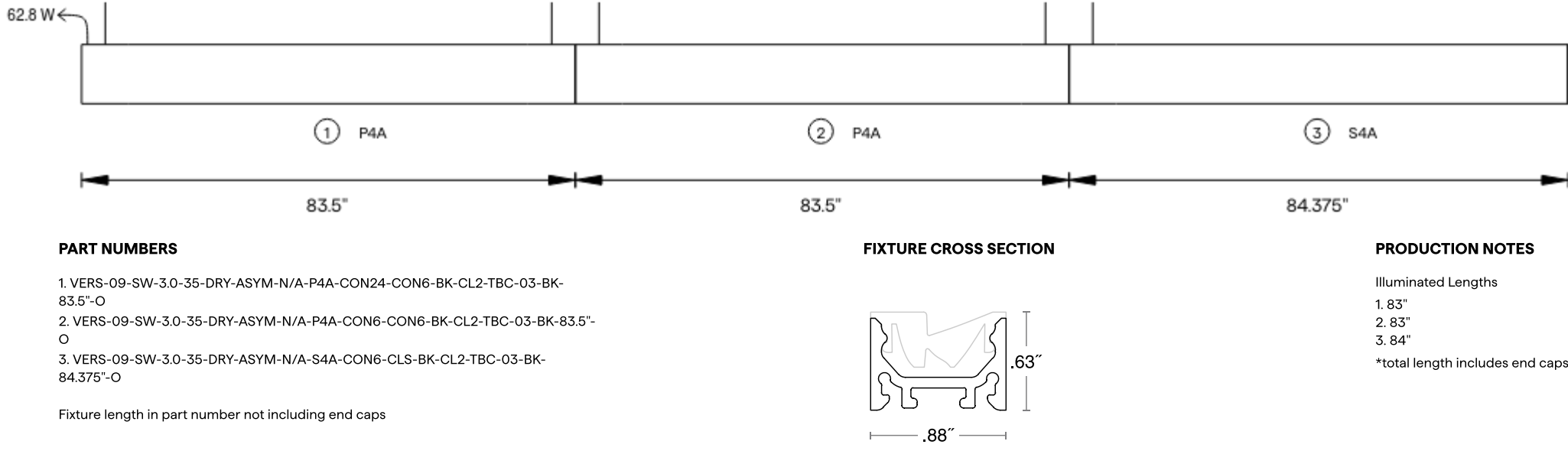
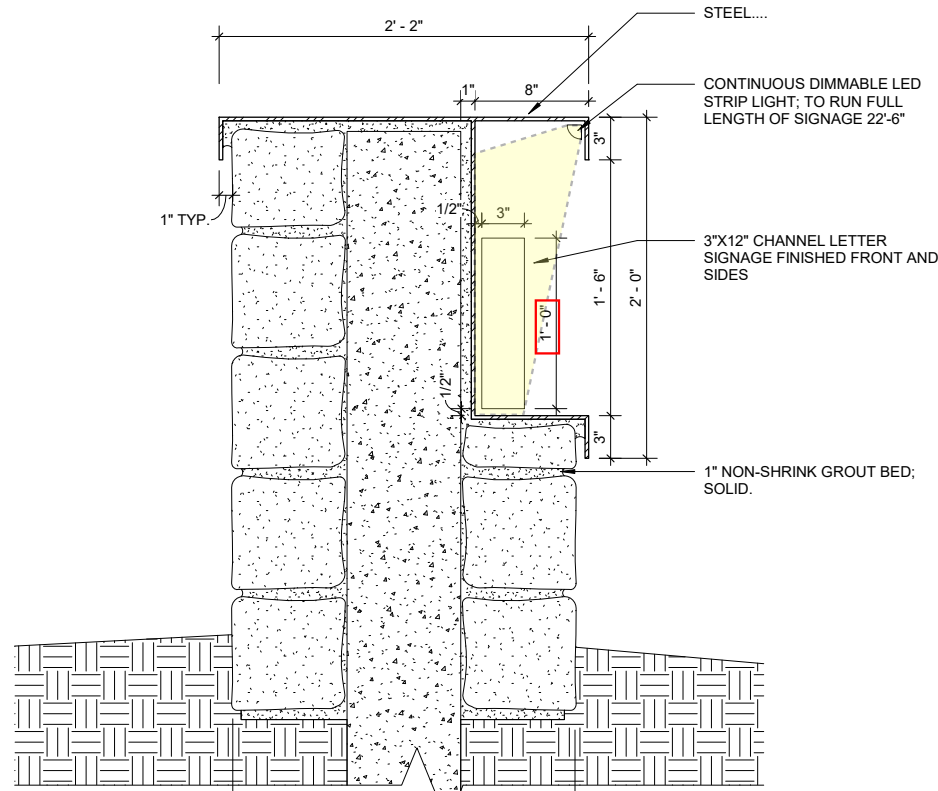
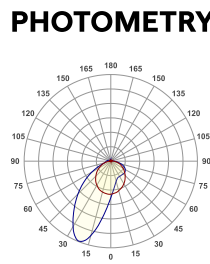
**VERS-ASYMMETRIC (09)**  
This VERSatile fixture directs the light in an asymmetrical direction without having to angle the fixture



PART NUMBER	
Product	VERS-09-SW-3.0-35-DRY-ASYM-N/A-P4A-CON24-CON6-BK-CL2-TBC-03-BK- <b>43.5\"/&gt;</b>

FIXTURE DETAILS	
Length	<b>251.855\"/&gt;</b>
Finish	Black
Rated	IP20 - DRY
Mounting	9/16\"/>
Wire Input/Output	Side Feed
Connector/Wire In	Connector 24\", Connector 6\"/>
Connector/Wire Out	Connector 6\"/>
Wire Color	Black
Wire Type	Class 2

OUTPUT	
Light Engine	Static White
Lens	Asymmetric
CCT/Color	3500K
Watts/Ft	3.0 W/ft



PART NUMBERS	FIXTURE CROSS SECTION	PRODUCTION NOTES
1. VERS-09-SW-3.0-35-DRY-ASYM-N/A-P4A-CON24-CON6-BK-CL2-TBC-03-BK-83.5'-0		Illuminated Length 1.83'
2. VERS-09-SW-3.0-35-DRY-ASYM-N/A-P4A-CON6-CON6-BK-CL2-TBC-03-BK-83.5'-0		Illuminated Length 2.83'
3. VERS-09-SW-3.0-35-DRY-ASYM-N/A-S4A-CON6-CLS-BK-CL2-TBC-03-BK-84.375'-0		Illuminated Length 3.84'

IMPORTANT: PLEASE READ  
Please note that this order will not be scheduled for production until approved submittal drawings are received. Approved submittal drawings must be signed and emailed back to GFL Account Manager in charge of this project. Each fixture's end length must be rounded up to the next foot when calculating total footage. \*Drawing for reference only. Not to scale.  
Configuration Ref: VSD09003  
© 2023 GFL, Inc. All rights reserved | 155 H&B St. Milford, CT 06460 | 203-361-8777 | sales@gflighting.com | www.gflighting.com

TOTAL SIGN LUMENS

270 LUMENS/FT X 21' - 0" = **5,670 LUMENS**

**REGARDING SAMPLES**  
THE SAMPLES PROVIDED FOR BAR REVIEW ARE REPRESENTATIVE OF THE BASIS OF DESIGN PRODUCT. THE SIGNAGE VENDOR WILL PROVIDE FINAL COLOR SAMPLES FOR REVIEW AND APPROVAL BY THE DESIGN TEAM.

\*ALL LIGHTING FIXTURES ARE TO BE DIMMABLE AND 3500K





VIEW FROM SOUTHWEST



VIEW FROM SOUTHEAST