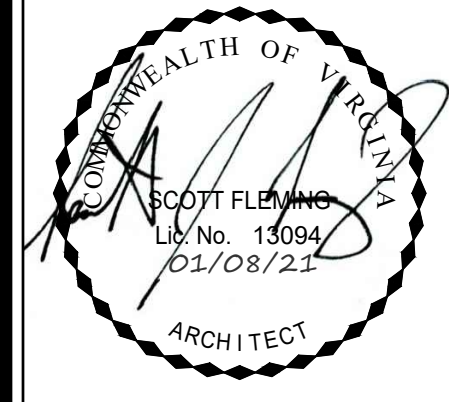


* G.C. TO COORDINATE ROUGH OPENING WITH DOOR MANUFACTURER, MASONRY OPENING AND TRIM REQUIREMENTS



RUST | ORLING
ARCHITECTURE

1215 CAMERON STREET
ALEXANDRIA, VA
22314

T - 703.836.3205
F - 703.548.4779
admin@rustorling.com
www.rustorling.com

CADENCE AT PARK
VIENNA, VIRGINIA

20.014

REVISIONS	
DATE	DESCRIPTION

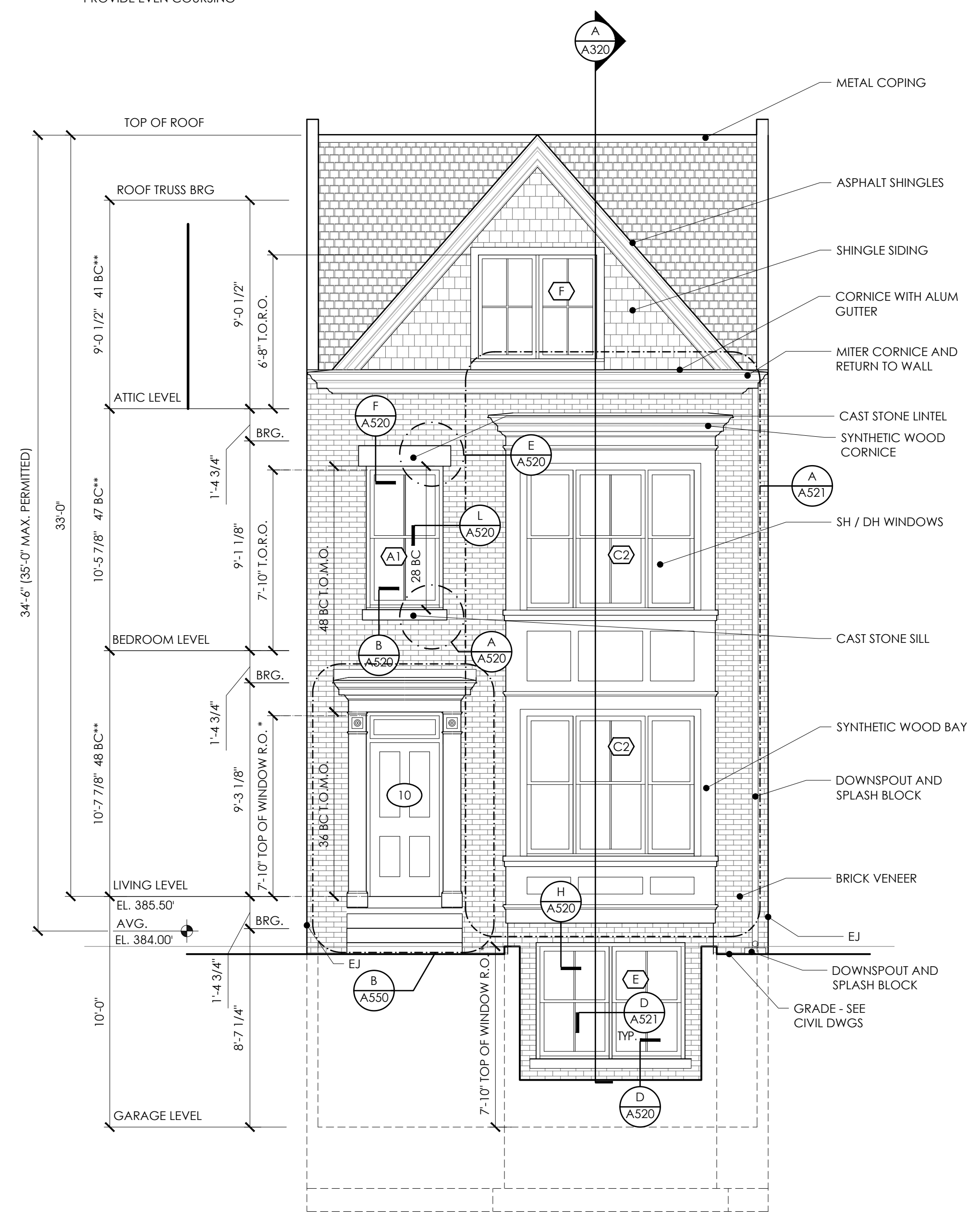
FOR PERMIT
01.08.21

TYPE A AND B
FRONT
ELEVATIONS

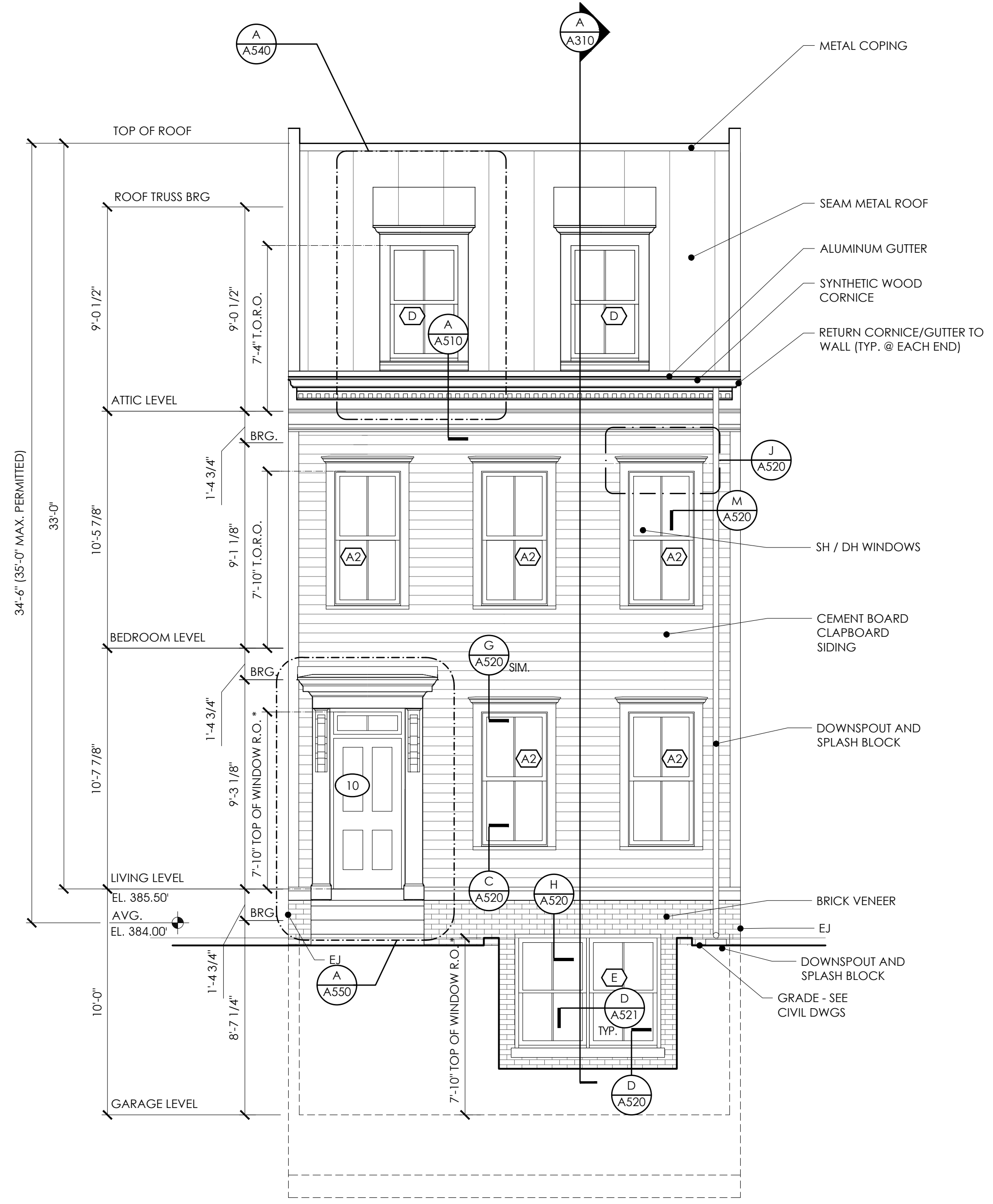
SHEET NO.

A210

**NOTE: MASON TO ADJUST
MORTAR JOINTS / COURSING TO
PROVIDE EVEN COURSING



TYPE B ELEVATION
1/4"=1'-0"



TYPE A ELEVATION
1/4"=1'-0"

B

A

D:\DRAWING\BIM\BIM\DWG\2020\20014_Cadence at Park\DWG\2020\20014_A210_Type A&B_Front elev.dwg / 1/8/2021 5:02:47 PM scott.fleming, Copyright (c) 2014 Rust Orling Architecture.