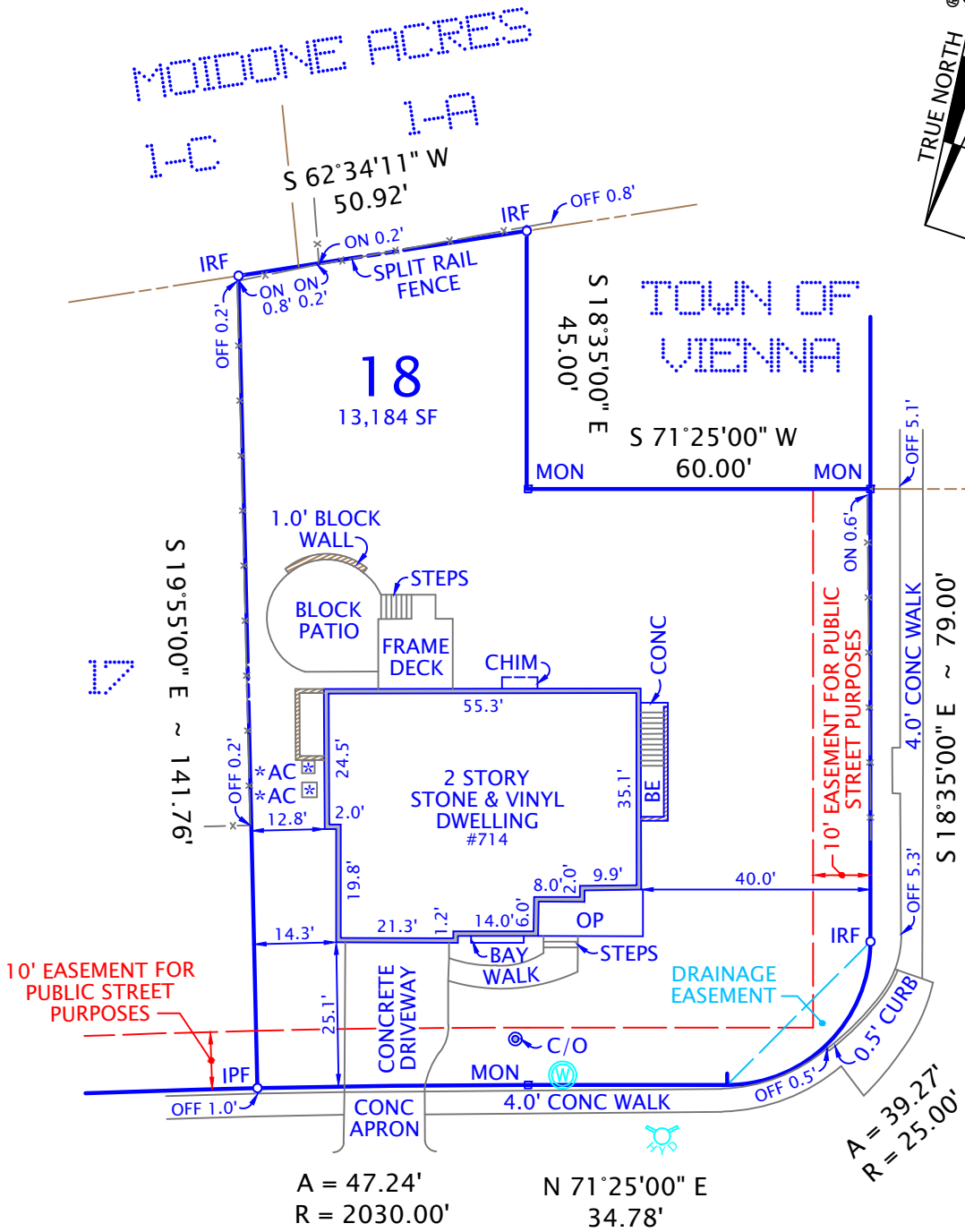
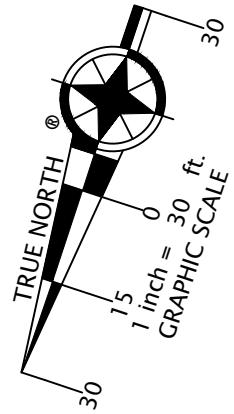


- NOTES: 1. FENCES ARE FRAME UNLESS NOTED.
 2. UTILITIES ARE UNDERGROUND.
 3. RETAINING WALLS ARE 0.7' CONC UNLESS NOTED.



KINGSLEY ROAD, SW

60' R/W
 PLAT

SHOWING HOUSE LOCATION ON
 LOT 18, BLOCK 1, SECTION EIGHT

VIENNA WOODS

(DEED BOOK 1650, PAGE 159)

TOWN OF VIENNA, VIRGINIA

FAIRFAX COUNTY

SCALE: 1" = 30' SEPTEMBER 6, 2024

COPYRIGHT BY DOMINION SURVEYORS, INC. THE INFORMATION CONTAINED ON THIS DOCUMENT MAY NOT BE COPIED, REPRODUCED OR ALTERED IN ANY FORM WITHOUT PERMISSION IN WRITING FROM THE COPYRIGHT OWNER.

I HEREBY CERTIFY THAT THE POSITIONS OF ALL THE EXISTING IMPROVEMENTS HAVE BEEN CAREFULLY ESTABLISHED BY A CURRENT FIELD SURVEY AND UNLESS SHOWN THERE ARE NO VISIBLE ENCROACHMENTS AS OF THIS DATE:

THIS PLAT IS SUBJECT TO RESTRICTIONS OF RECORD.
 A TITLE REPORT WAS NOT FURNISHED.
 NO CORNER MARKERS SET.

DOMINION SURVEYORS®

ORDERED BY:
 JON MORIN

8808-H PEAR TREE VILLAGE COURT
 ALEXANDRIA, VIRGINIA 22309
 703-619-6555
 www.dominionsurveyors.com