

DD-BAND		
ITEM #	PART # / ASSEMBLY #	DESCRIPTION
1	26972-BAND-WALL	WALL SECTION
2	26972-RECIEVER	RECIVER CHANNEL
3	26972-CHANNEL	9 1/2" C-CHANNEL EXTRUSION
4	26972-DIVERTER	DIVERTER PAN
5	26972-BAND-ALNPLT	BAND ALLIGNMENT PLATE
6	26972-98392A480	SHEET METAL TO WOOD WITH WASHER
7	26972-3IN_SPAX	3" SPAX 1/4"-20

- INSTALLATION**
1. PLACE ATTACHMENT CHANNEL AGAINST WALL AND FASTEN WITH PROVIDED 3" SPAXES.
 2. PLACE C-CHANNEL OVER ATTACHMENT CHANNEL USING THE ALINEMENT PLATES TO AID IN JOINING MULTIPLE PIECES AND SCREW INTO PLACE WITH PROVIDED 1" SELF TAPPING SCREWS
 3. PUT VHB TAPE ON THE UNDER SIDE EDGE OF THE DIVERTER PAN AND INSTALL ON TOP OF THE BAND.
 4. CAULK ALONG THE TOP OF THE DIVERTER PAN TO ENSURE A WATERTIGHT SEAL.

ALL ALUMINUM TO BE 6061-T6 U.N.O.
ALL ALUMINUM TO ALUMINUM WELDS
TO BE 3/16" FILLETS ALL AROUND
UTILIZING 4043 FILLER U.N.O.
ALL STEEL TO STEEL WELDS TO BE 3/16"
FILLETS ALL AROUND U.N.O.

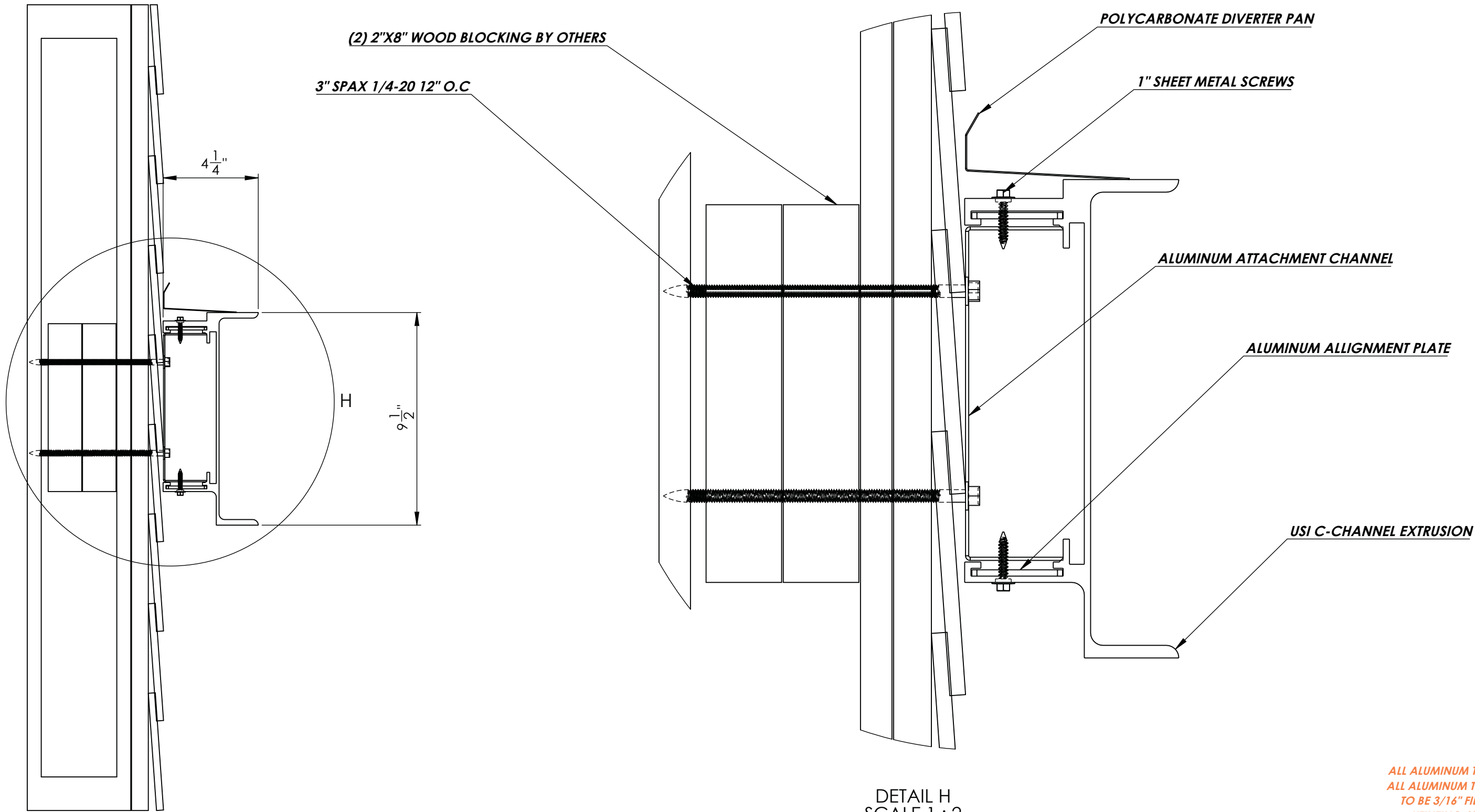


Uni-Structures, Inc.
The Drive-Thru Specialists
8540 COBB CENTER DR.
STE 100 KENNESAW, GA 30152
PHONE: (770)-499-2000
PHONE: (800)-386-9864

CLIENT: DUNKIN		MADE IN THE USA	
LOCATION: 411 Maple Avenue Vienna, VA 22180		DATE: 10/1/2025	
SALES: S. FREYMAN	DESIGNER: C. JOCSO	DWG #: 26972	
ASSEMBLY #: 26972-BAND		STORE #: --	
FILE:N:\Projects\Dunkin\Jobs\Vienna, VA (Maple Ave.)\CAD\			

ENGINEERING STAMP

PART #: 26972-BAND		
DESCRIPTION:		
MATERIAL:	STATUS: P D	
THICKNESS: "		
WEIGHT: LBS	PAGE: 7	REV. 0



DETAIL H
SCALE 1 : 2

ALL ALUMINUM TO BE 6061-T6 U.N.O.
ALL ALUMINUM TO ALUMINUM WELDS
TO BE 3/16" FILLETS ALL AROUND
UTILIZING 4043 FILLER U.N.O.
ALL STEEL TO STEEL WELDS TO BE 3/16"
FILLETS ALL AROUND U.N.O.

**LIGHTS AND HARDWARE FOR LIGHTS TO
BE PROVIDED BY SPECIALTY LIGHTING**



Uni-Structures, Inc.
The Drive-Thru Specialists
8540 COBB CENTER DR.
STE 100 KENNESAW, GA 30152
PHONE: (770)-499-2000
PHONE: (800)-386-9864

CLIENT: DUNKIN		MADE IN THE USA	
LOCATION: 411 Maple Avenue Vienna, VA 22180		DATE: 10/1/2025	
SALES: S. FREYMAN	DESIGNER: C. JOCSO	DWG #: 26972	
ASSEMBLY #: 26972-BAND		STORE #: --	
FILE:N:\Projects\Dunkin\Jobs\Vienna, VA (Maple Ave.)\CAD\			

ENGINEERING STAMP

PART #: 26972-BAND		
DESCRIPTION:		
MATERIAL:	STATUS: P D	
THICKNESS: "		
WEIGHT: LBS	PAGE: 8	REV. 0