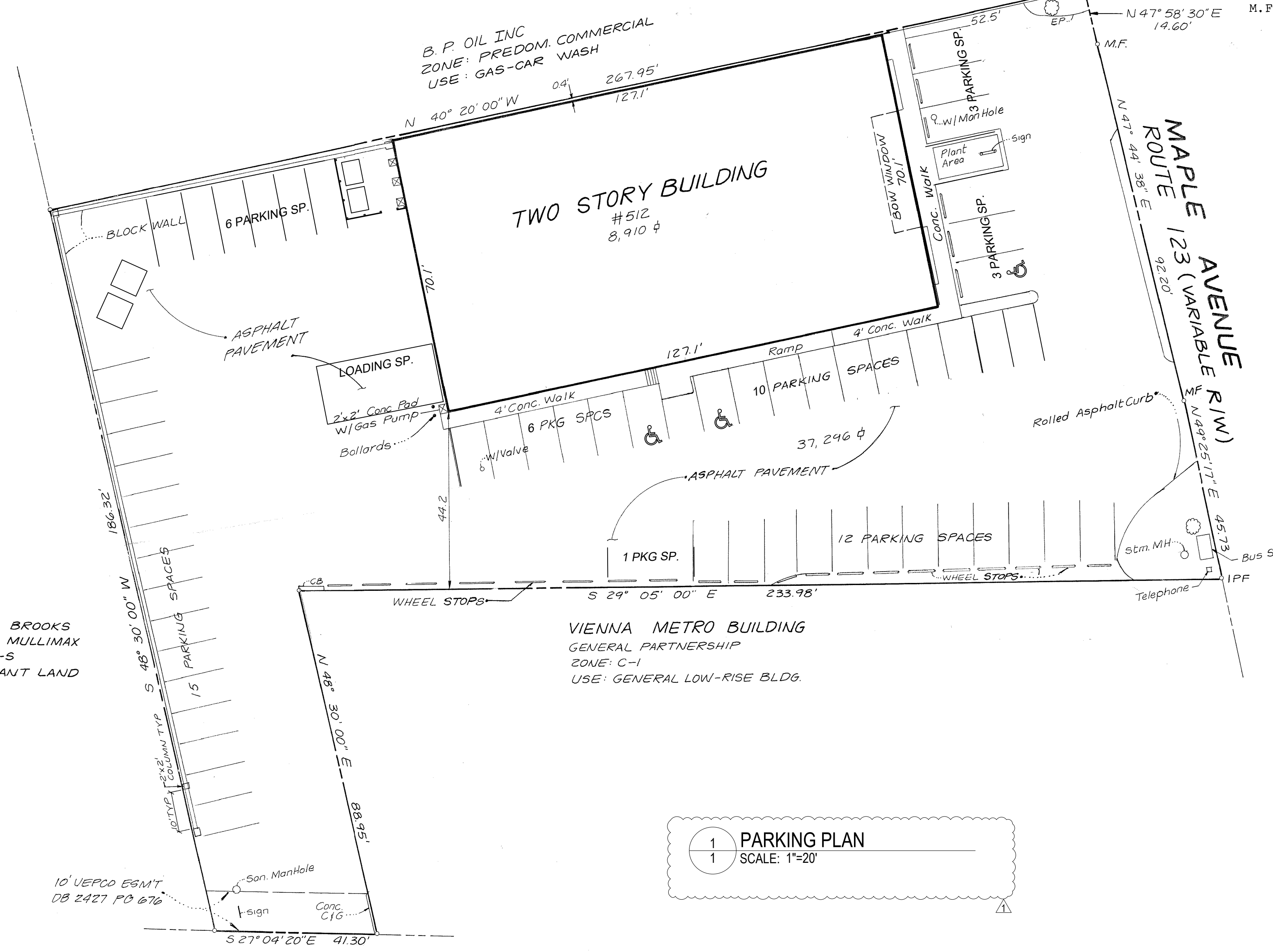


This land is situated in Zone C as shown on Community Map No. 510083, Panel 0002 B of the Federal Insurance Administration, Department of Housing and Urban Developments Flood Hazard Boundary and Insurance Rate Maps. Zone C is an area of minimal flooding.

The property delineated hereon is shown on assessment map no. 38-3 ((2)) 116 & 116A and is zoned C-1 and R-S.

IPF - IRON PIPE FOUND
M.P. - MONUMENT FOUND



1 PARKING PLAN
SCALE: 1"=20'

NOTES

1. UNLOCATEABLE DRIVEWAY AGREEMENT RECORDED DB 5122 PG 40
2. TITLE REPORT FURNISHED BY: MEADE A. SPOTTS 10 EAST FRANKLIN ST SUITE 400 RICHMOND, VIRGINIA 23219 POLICY NO CTA 2939

THIS PARKING PLAN IS BASED ON A MARCH 1, 1989 SURVEY THAT WAS PREPARED BY HAROLD A. LOGAN ASSOC., PC
UPDATED INFORMATION & PARKING TABULATION HAS BEEN PREPARED BY ROBERT DUNNING, AIA

PARKING TABULATIONS

BUILDING AREA	SUITE AREA (SF)	PARKING REQUIREMENTS	REQ'D. PKG.
GROUND LEVEL TENANT AREAS			
TENANT SPACE A/B- GROCERY USE	924	4 SP/ 1000 SF	4 SP
TENANT SPACE A/B- RESTAURANT USE	2,540	1 SP/ 4 SEATS	48 SEATS= 12 SP see footnote 1
TENANT SPACE C- QUANTUM MOVEMENT	4,350	see footnote 2	11 SP
SECOND LEVEL TENANT AREAS			
SPACE 200- BUSINESS USE (VACANT)	2,735	1 SP/ 200 SF	14 SP see footnote 3
SPACE 201- SPECIALIZED INSTRUCTION (ZERKALO)	2,452	see footnote 4	5 SP
SPACE 202- SPECIALIZED INSTRUCTION (THE LAB)	1,838	1 SP/ 200 SF	9 SP see footnote 5

footnote 1 hours of operation (7 days a week) 8am-8pm
footnote 2 Indoor Recreational Use, Private (Athlete Performance and Training Facility)
4 employees max. per shift; 10 clients max. at any one time
Parking @ 1 space per employee on max. shift + 2 spaces per 3 clients = 11 spaces
Hours of operation (7 days a week) 8am-9pm
staff only (7 days a week) 8am-9pm
performance and training appointments (7 days a week) 6pm-9pm
footnote 3 General Business- anticipated hours of operation (M-F) 9am-5pm
footnote 4 Specialized Instruction- Musical Theatrical Arts for children 6yrs-17yrs of age
2 employees per max. shift; 8 students max. on site at any one time (primarily parent drop off & pick up)
2 employees per max shift @ 2 spaces per each 3 employees = 1 space
+ sufficient number of spaces to accommodate all persons anticipated to be on-site at any one time
8 students @ 1 space per 2 students = 4 spaces
Hours of operation (M-F) 4pm-10pm
Hours of operation (Sa) 9am-10pm
footnote 5 Hours of operation (M,Tu,W,F) 5pm-7pm
Hours of operation (Sa-Su) 9am-1pm

TIME PERIOD	TENANT	MON	TUES	WED	THUR	FRI	SAT	SUN
8AM-5PM	SPACE A/B	16 SP	16 SP	16 SP	16 SP	16 SP	16 SP	16 SP
	SPACE C	11 SP	11 SP	11 SP	11 SP	11 SP	11 SP	11 SP
	SPACE 200	14 SP	14 SP	14 SP	14 SP	14 SP	0 SP	0 SP
	SPACE 201	6 SP	6 SP	6 SP	6 SP	6 SP	6 SP	6 SP
	SPACE 202	9 SP	9 SP	9 SP	9 SP	9 SP	9 SP	9 SP
TOTAL		56 SP	56 SP	56 SP	56 SP	56 SP	42 SP	42 SP

TOTAL PARKING SPACES REQUIRED = 56 SPACES
TOTAL PARKING SPACES PROVIDED = 56 SPACES
53 STANDARD PARKING SPACES
3 ACCESSIBLE PARKING SPACES
+ 1 LOADING SPACE

DunningGroup
architects
a professional limited liability company
14420 Albemarle Point Place, Suite 230
Chantilly, Virginia 20151
703.378.7991
www.dunningarchitects.com

PROJECT:

PARKING PLAN

at
512 Maple Ave. W.,
Vienna, VA 22180

DEVELOPER:

CONSULTANTS:

PROFESSIONAL SEAL:

ISSUED: _____ DATE: _____
PERMIT: _____ FEBRUARY 27, 2026

NO. REVISION: _____ DATE: _____
REVIEW COMMENTS: _____ MARCH 2, 2026

DESIGNED/DRAWN BY: _____ ND, RPD
REVIEWED/APPROVED BY: _____ RPD
PROJECT NO: 2025-060
SCALE: AS NOTED

THE DOCUMENT AND IDEAS AND DESIGNS INCORPORATED HEREIN AS AN INSTRUMENT OF PROFESSIONAL SERVICE, IS THE PROPERTY OF DUNNING GROUP ARCHITECTS, LLC AND IS NOT TO BE COPIED OR USED, IN WHOLE OR IN PART FOR ANY OTHER PROJECT WITHOUT THE WRITTEN AUTHORIZATION OF DUNNING GROUP ARCHITECTS, LLC.

SHEET TITLE:

PARKING PLAN

SHEET NUMBER:

1 OF 1