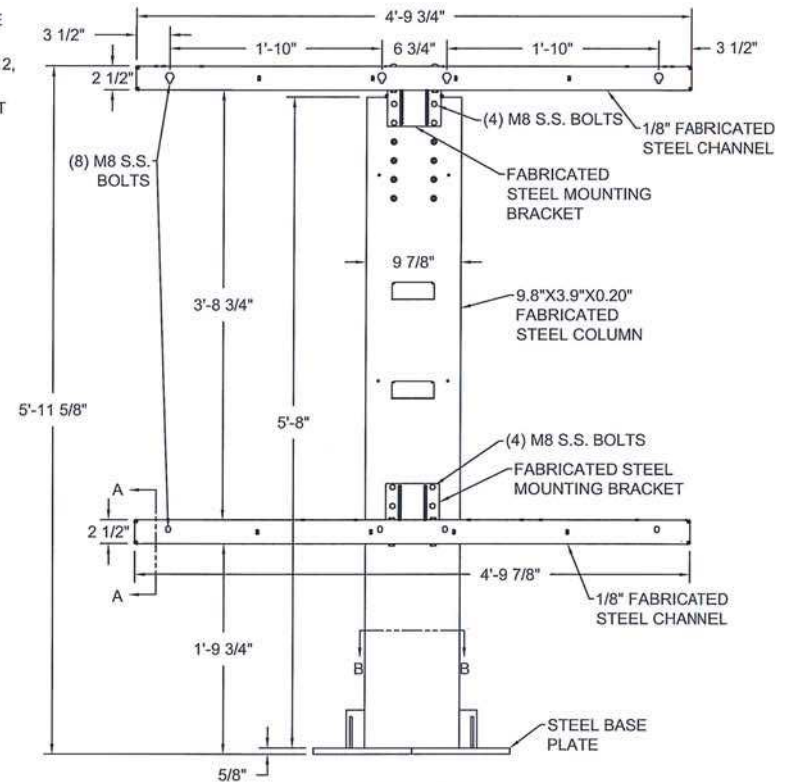
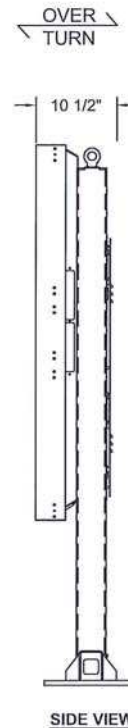
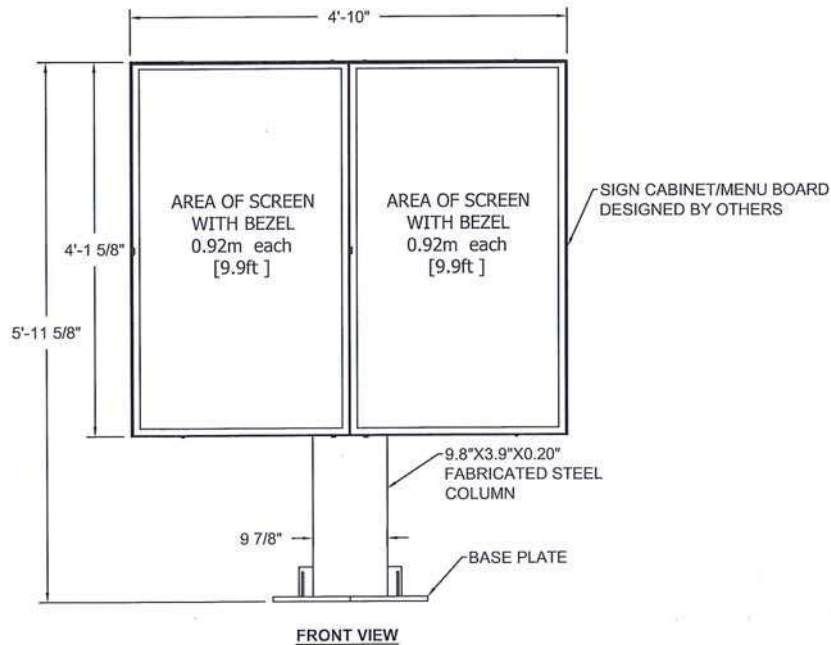
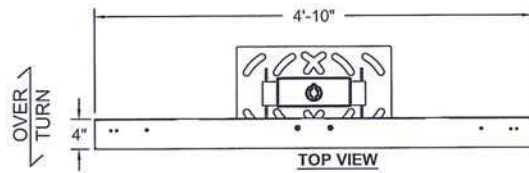


NOTES:

1. THIS STRUCTURE HAS BEEN DESIGNED TO MEET THE LOADING REQUIREMENTS OF A 180 MPH WIND SPEED PER THE FLORIDA BUILDING CODE 5TH ED. 2014/IBC 2012, EXPOSURE C.
2. FABRICATED STEEL SUPPORT MEMBERS SHALL MEET ASTM A36 OR EQUIVALENT.
3. STEEL WELDS SHALL BE MADE WITH E70XX ELECTRODES BY PERSON CURRENTLY QUALIFIED IN ACCORDANCE WITH AWS STANDARDS.
4. THE DESIGN DEPICTED ON THIS DRAWING IS PROTOTYPICAL, AND SHOULD NOT BE USED AT A SPECIFIC SITE UNLESS DEEMED SUITABLE FOR THAT SITE BY A COMPETENT PROFESSIONAL ENGINEER.



SUPPORT FRAME

McDONALD'S DOUBLE FACE MENU BOARD
PROTOTYPICAL 180 MPH

CLIENT:



COATES
1142 W. MADISON STREET, SUITE 304
CHICAGO, IL 60607

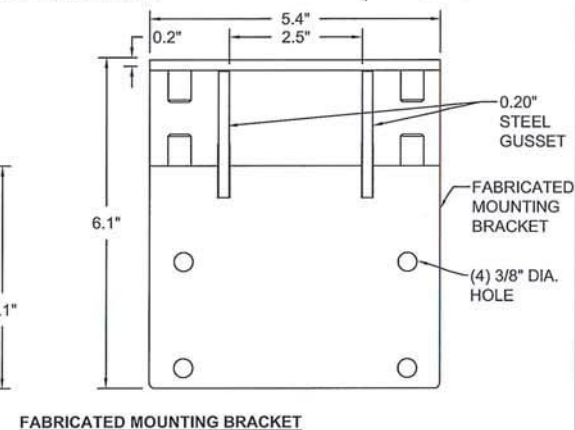
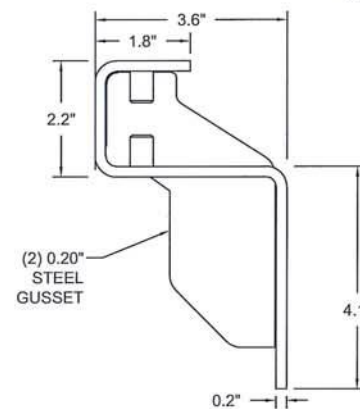
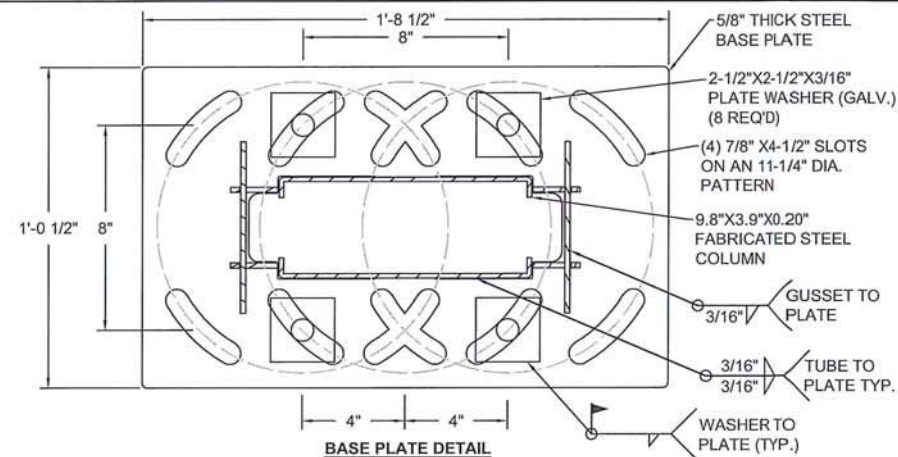
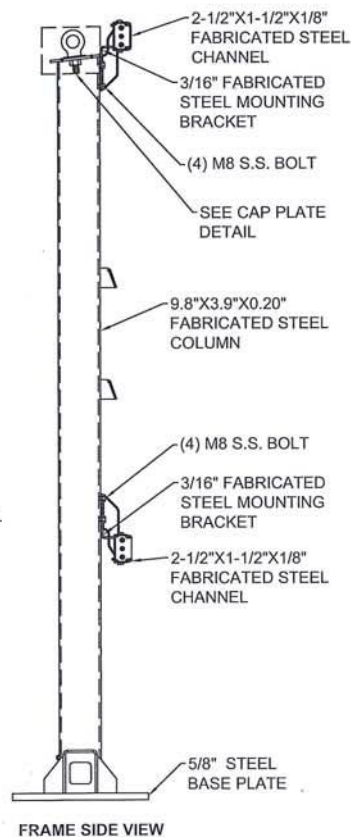
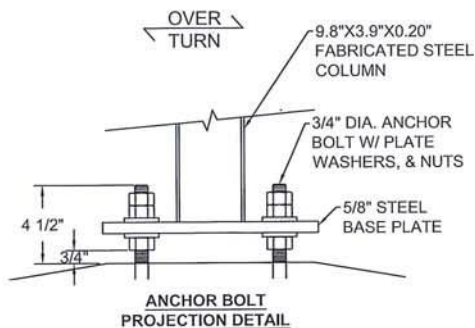
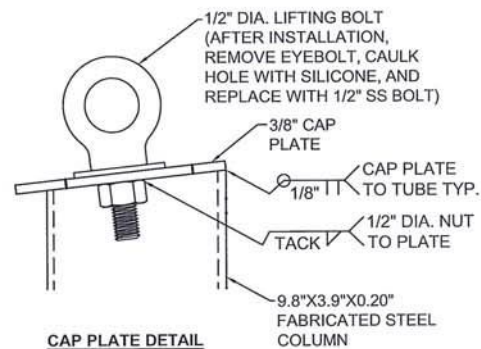
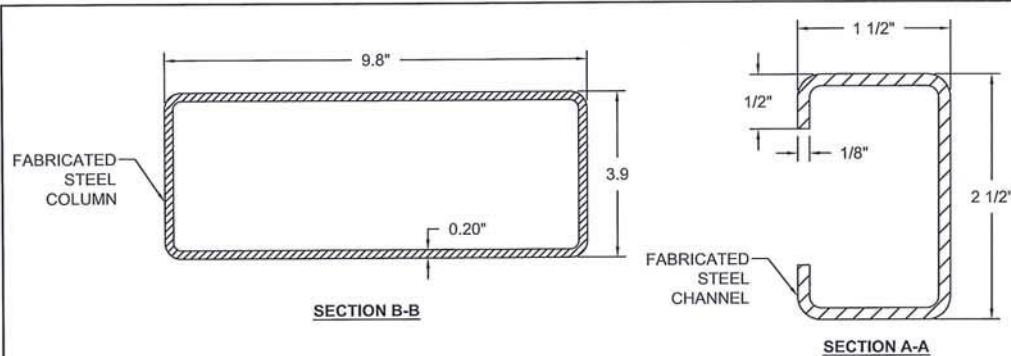


**CAMPBELL
CONSULTING
ENGINEERING, LLC**

382 HIGH STREET
MARYVILLE, TN 37804

865-980-8881
CCENGINEER.COM
COA # 31912

SHEET 1	BY JRJ	PROJECT NO. 17-0140-C
OF 3	DATE 10/5/2017	DRAWING NO. B101015-A



McDONALD'S DOUBLE FACE MENU BOARD
PROTOTYPE 180 MPH

CLIENT:



COATES
1142 W. MADISON STREET, SUITE 304
CHICAGO, IL 60607

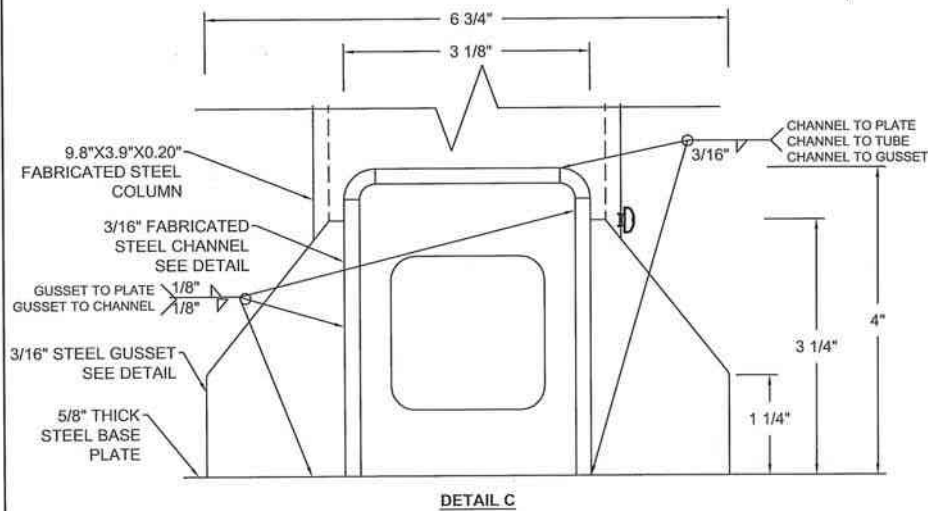
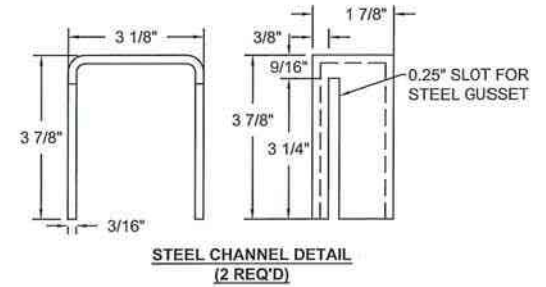
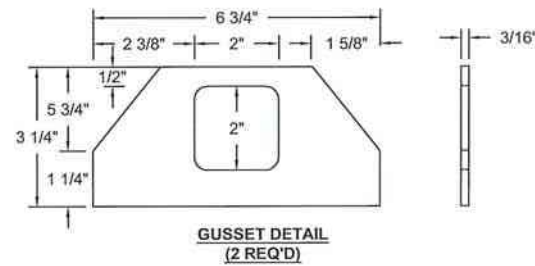


**CAMPBELL
CONSULTING
ENGINEERING, LLC**

382 HIGH STREET
MARYVILLE, TN 37804

865-980-8881
CCENGINEER.COM
COA # 31912

SHEET	2	BY	JRJ	PROJECT NO.	17-0140-C
OF	3	DATE	10/5/2017	DRAWING NO.	B101015-A



McDONALD'S DOUBLE FACE MENU BOARD
PROTOTYPAL 180 MPH

CLIENT:



COATES
1142 W. MADISON STREET, SUITE 304
CHICAGO, IL 60607



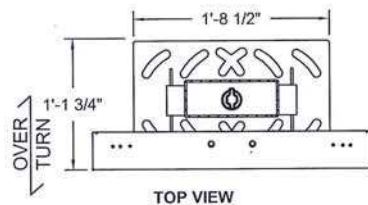
**CAMPBELL
CONSULTING
ENGINEERING, LLC**

382 HIGH STREET
MARYVILLE, TN 37804

865-980-8881
CCENGINEER.COM
COA # 31912

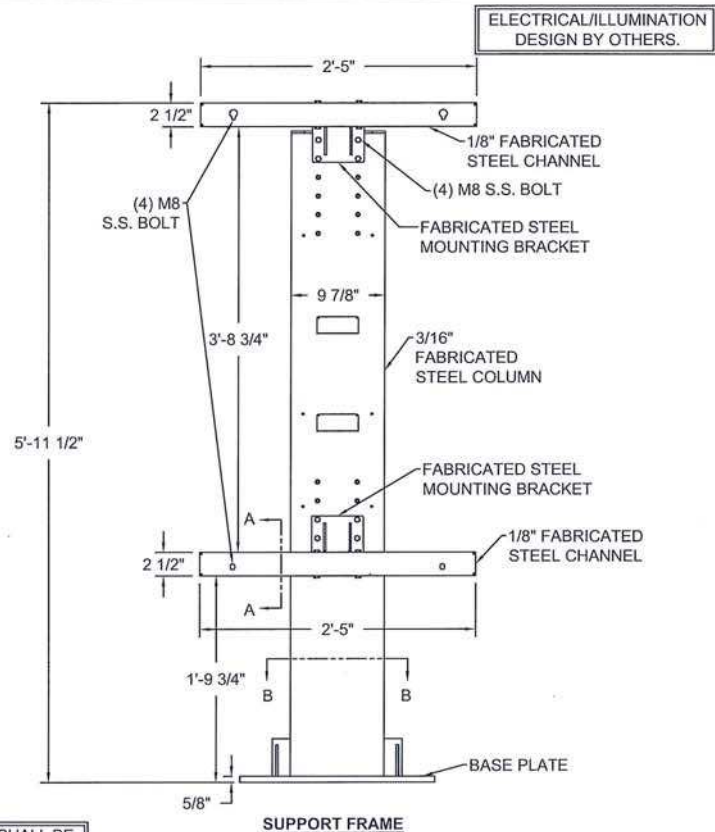
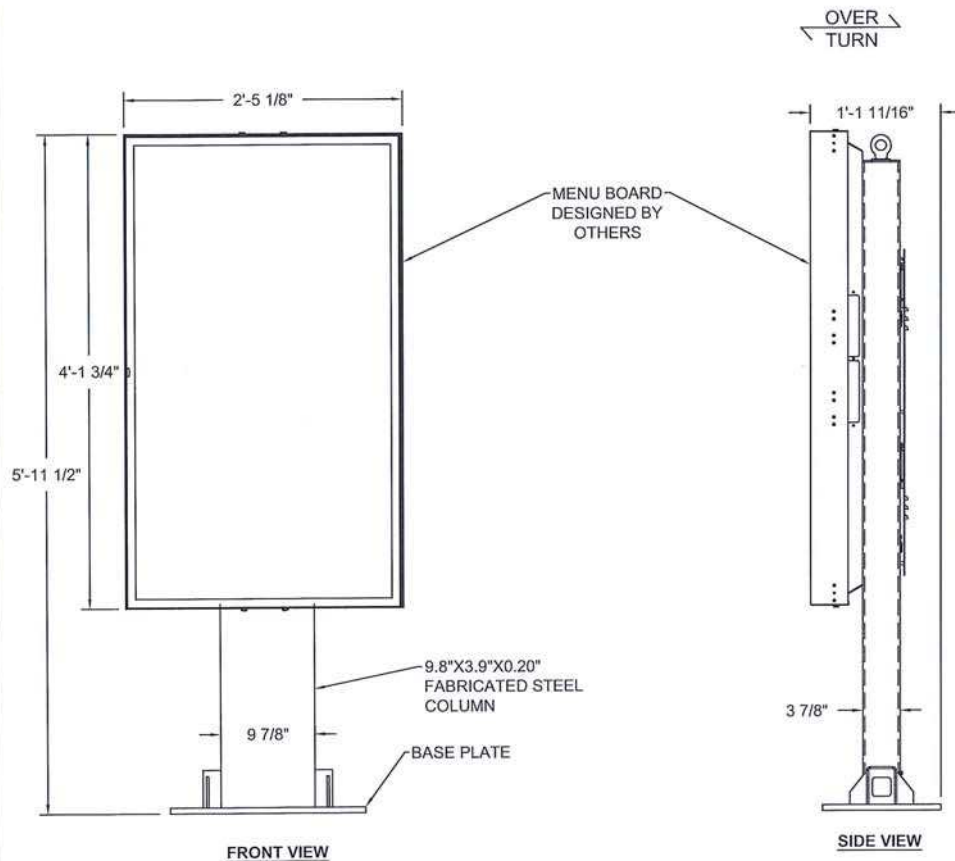
SHEET	BY	PROJECT NO.
3	JRJ	17-0140-C
OF	DATE	DRAWING NO.
3	10/5/2017	B101015-A

SIGN CABINET
DESIGN BY OTHERS.



NOTES:

1. THIS STRUCTURE HAS BEEN DESIGNED TO MEET THE LOADING REQUIREMENTS OF A 180 MPH WIND SPEED PER THE FLORIDA BUILDING CODE 5TH ED. 2014/IBC 2012, EXPOSURE C.
2. FABRICATED STEEL SUPPORT MEMBERS SHALL MEET ASTM A36 OR EQUIVALENT.
3. STEEL WELDS SHALL BE MADE WITH E70XX ELECTRODES BY PERSON CURRENTLY QUALIFIED IN ACCORDANCE WITH AWS STANDARDS.
4. THE DESIGN DEPICTED ON THIS DRAWING IS PROTOTYPICAL, AND SHOULD NOT BE USED AT A SPECIFIC SITE UNLESS DEEMED SUITABLE FOR THAT SITE BY A COMPETENT PROFESSIONAL ENGINEER.



ALL STEEL SHALL BE
HOT DIP GALVANIZED.

McDONALD'S SINGLE FACE MENU BOARD
PROTOTYPICAL 180 MPH

CLIENT:



COATES
1142 W. MADISON STREET, SUITE 304
CHICAGO, IL 60607

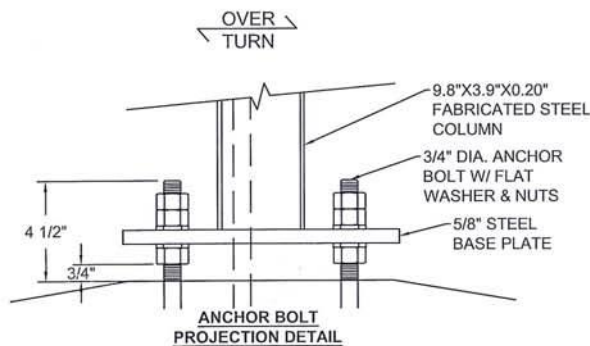
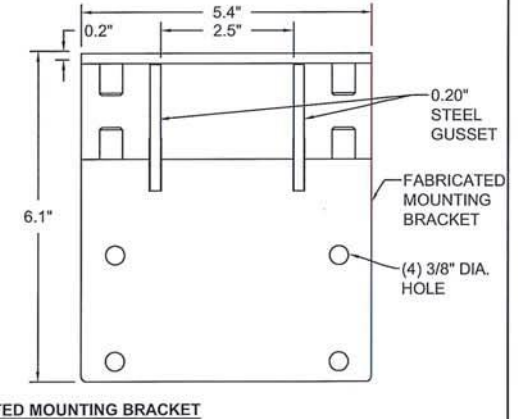
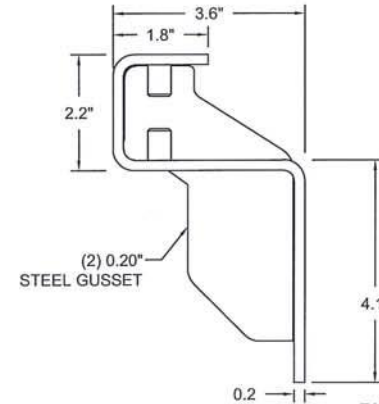
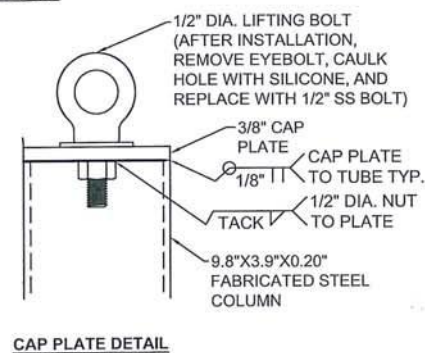
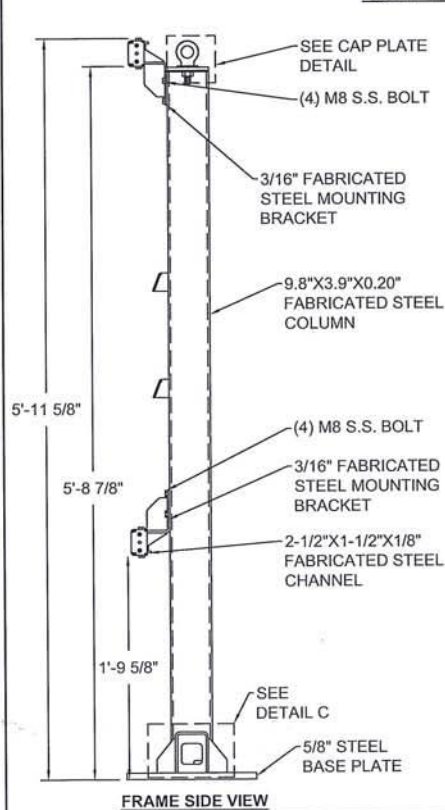
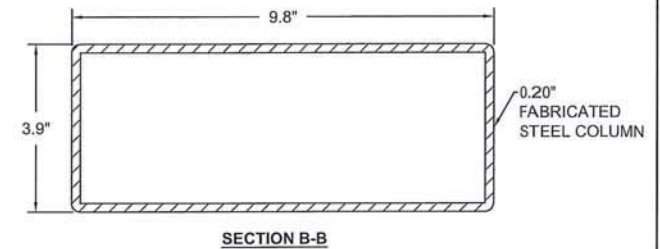
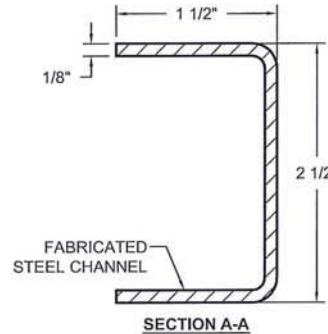
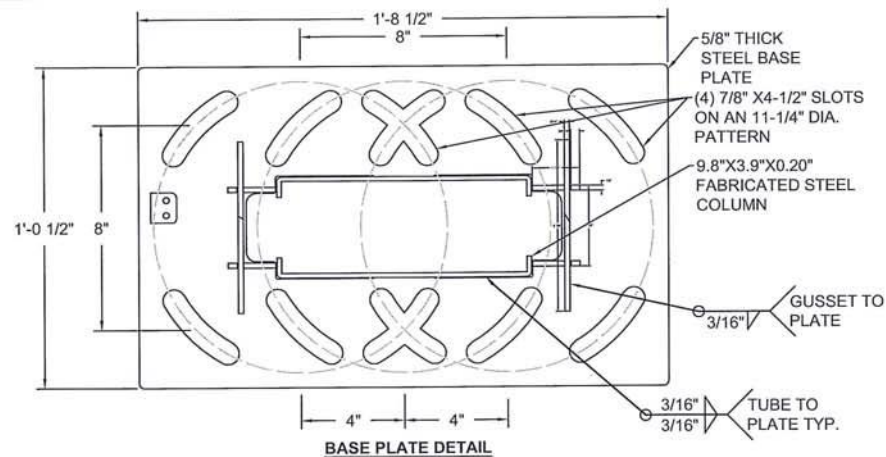


**CAMPBELL
CONSULTING
ENGINEERING, LLC**

382 HIGH STREET
MARYVILLE, TN 37804

865-980-8881
CCENGINEER.COM
COA # 31912

SHEET 1	BY JRJ	PROJECT NO. 17-0140-C
OF 3	DATE 10/5/2017	DRAWING NO. B101016-A

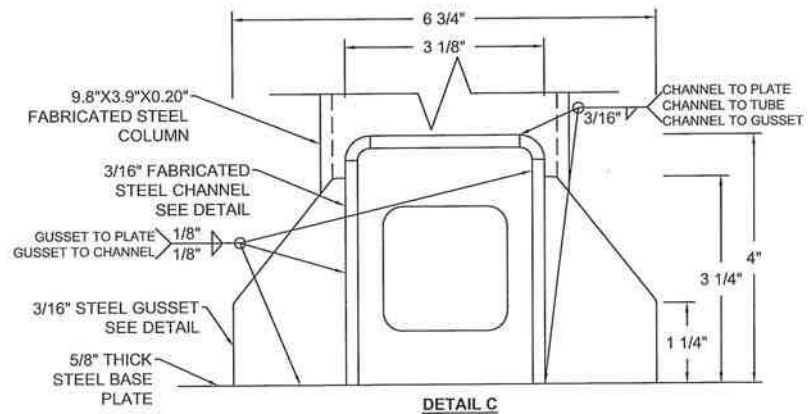
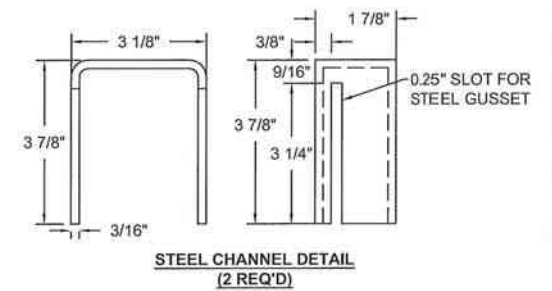
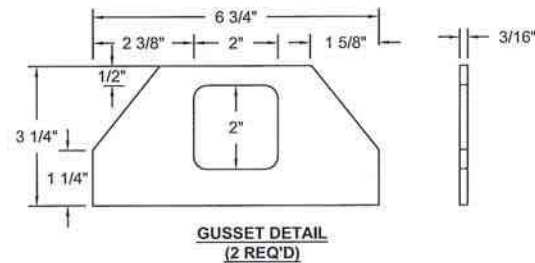


McDONALD'S SINGLE FACE MENU BOARD
PROTOTYPAL 180 MPH

CLIENT: **coates** COATES
1142 W. MADISON STREET, SUITE 304
CHICAGO, IL 60607

CAMPBELL CONSULTING ENGINEERING, LLC
382 HIGH STREET MARYVILLE, TN 37804
865-980-8881
CCENGINEER.COM
COA # 31912

SHEET 2	BY JRJ	PROJECT NO. 17-0140-C
OF 3	DATE 10/5/2017	DRAWING NO. B101016-A



McDONALD'S SINGLE FACE MENU BOARD
PROTOTYPAL 180 MPH

CLIENT:



COATES
1142 W. MADISON STREET, SUITE 304
CHICAGO, IL 60607



**CAMPBELL
CONSULTING
ENGINEERING, LLC**

382 HIGH STREET
MARYVILLE, TN 37804

865-980-8881
CCENGINEER.COM
COA # 31912

SHEET	BY	PROJECT NO.
3	JRJ	17-0140-C
OF	DATE	DRAWING NO.
3	10/5/2017	B101016-A