

REAR WALL SIGN -NEW  
1" = 1'-0"



DESCRIPTION OF WORK:  
FURNISH AND INSTALL (1) NEW NON-ILLUMINATED SIGN PANEL ON REAR WALL NEXT TO ENTRANCE DOOR.

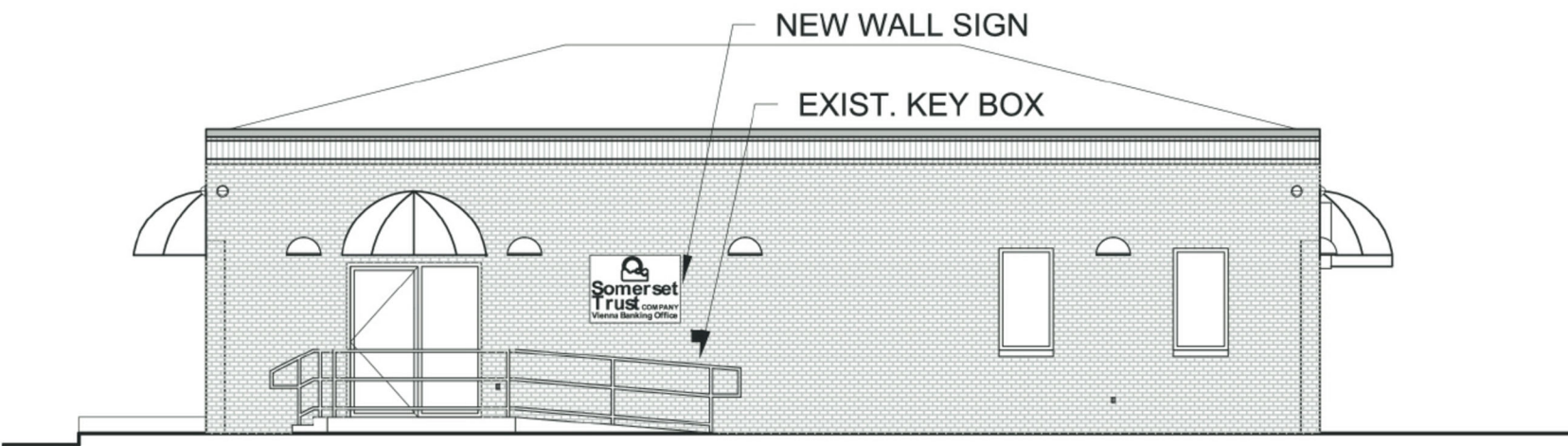
BACKGROUND PANEL MADE 3MM WHITE DIBOND ALUMINUM COMPOSITE OVERLAID WITH OPAQUE DURANODIC BRONZE VINYL TO MATCH EXISTING SIGNAGE.  
LOGO APPLIED TO FACE WITH WHITE, 3630-125 GOLDEN YELLOW & 3630-76 HOLLY GREEN VINYL.  
COPY APPLIED TO FACE WITH WHITE VINYL.

PANEL MOUNTED FLUSH TO BRICK WALL WITH THRU-FACE SCREWS INTO MASONRY ANCHORS, SCREW HEADS TO HAVE DK BROWN DECORATIVE CAPS.

**SIGN AREA: 12 SQUARE FEET**



EXISTING



PROPOSED NORTHWEST ELEVATION  
SCALE: 1/8" = 1'-0"

PROPOSED