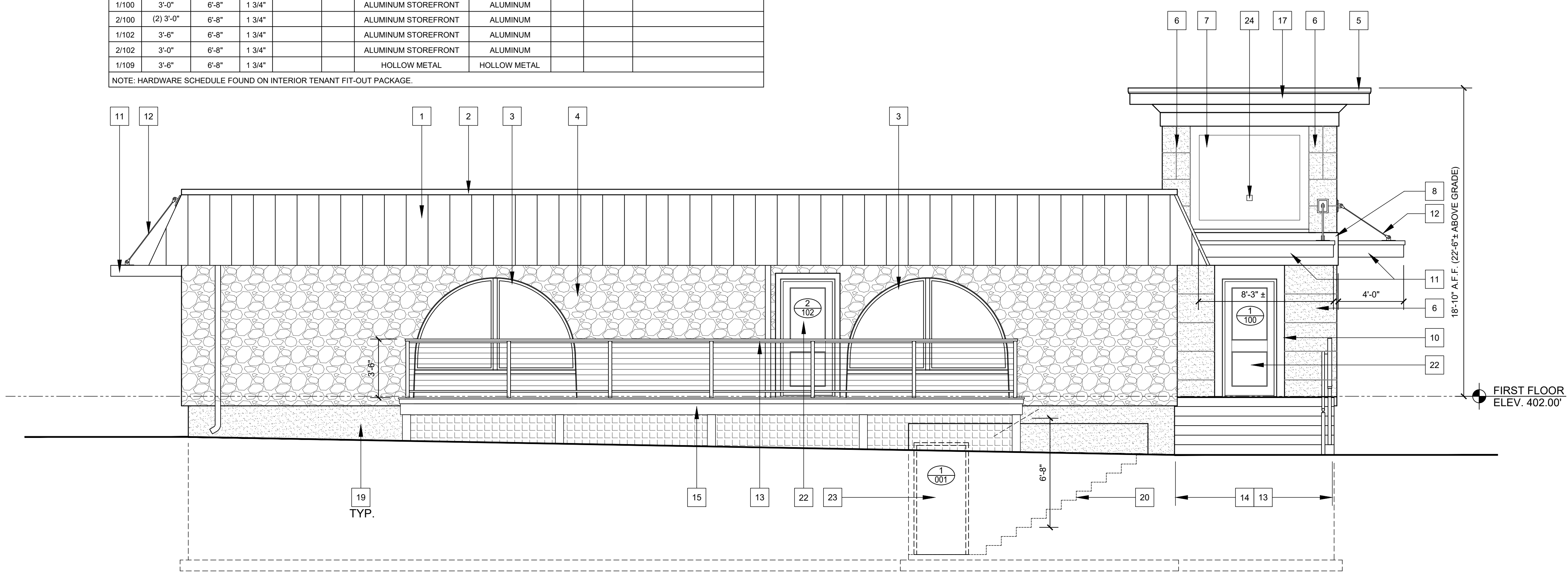


EXTERIOR DOOR SCHEDULE										
DOORS						FRAMES				
NO.	WIDTH	HEIGHT	THICK.	RATING	TYPE	MATERIAL	MATERIAL	TYPE	RATING	REMARKS
1/001	3'-0"	6'-8"	1 3/4"			HOLLOW METAL	HOLLOW METAL			SIMILAR HARDWARE TO 1/109.
1/100	3'-0"	6'-8"	1 3/4"			ALUMINUM STOREFRONT	ALUMINUM			
2/100	(2) 3'-0"	6'-8"	1 3/4"			ALUMINUM STOREFRONT	ALUMINUM			
1/102	3'-6"	6'-8"	1 3/4"			ALUMINUM STOREFRONT	ALUMINUM			
2/102	3'-0"	6'-8"	1 3/4"			ALUMINUM STOREFRONT	ALUMINUM			
1/109	3'-6"	6'-8"	1 3/4"			HOLLOW METAL	HOLLOW METAL			

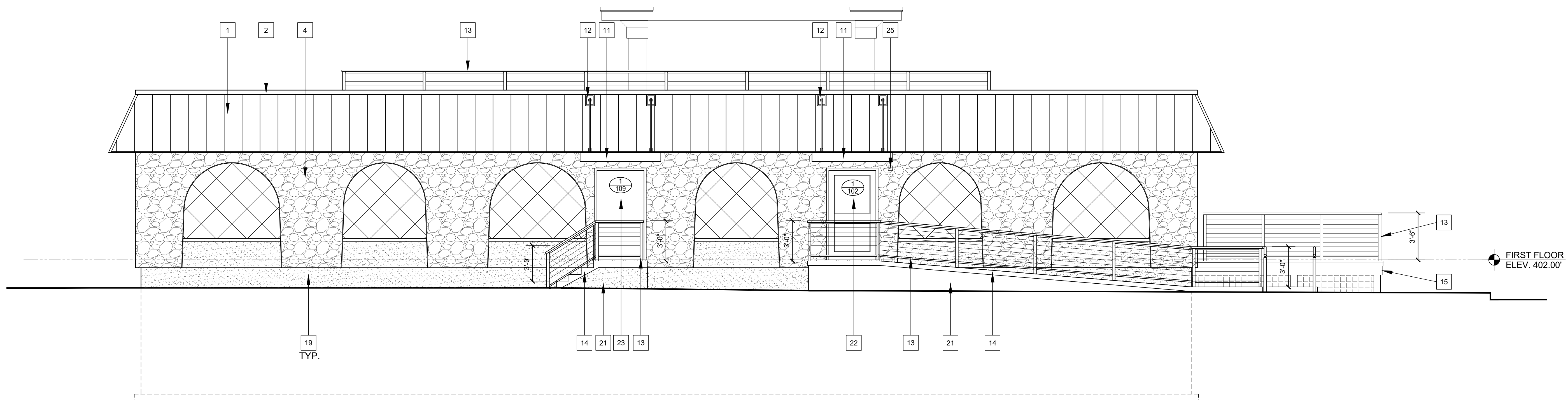
NOTE: HARDWARE SCHEDULE FOUND ON INTERIOR TENANT FIT-OUT PACKAGE.

**ELEVATION KEYNOTE LEGEND**

- 1 REMOVE CLAY TILE. REPLACE WITH STANDING SEAM METAL ROOFING SYSTEM. COLOR: CHARCOAL
- 2 ALUMINUM WALL CAP FLASHING TO MATCH STANDING SEAM ROOF SYSTEM
- 3 EXISTING STOREFRONT WINDOWS. REPAIR AS REQUIRED AND PAINT BLACK.
- 4 EXISTING STONE VENEER TO REMAIN - PATCH AND CLEAN AS REQUIRED TO MATCH.
- 5 PRE-FINISHED ALUMINUM GRAVEL STOP COPING
- 6 WATER MANAGED EIFS SYSTEM OVER 5/8" DENSGLAS SHEATHING - PRIMARY COLOR/FINISH TO BE SELECTED
- 7 WATER MANAGED EIFS SYSTEM OVER 5/8" DENSGLAS SHEATHING - SECONDARY COLOR/FINISH TO BE SELECTED
- 8 WATER MANAGED EIFS SYSTEM OVER 5/8" DENSGLAS SHEATHING ON BAND - COLOR/FINISH TO BE SELECTED
- 9 NEW STORE FRONT WINDOW IN ALUMINUM STOREFRONT FRAMING WITH 1" INSULATION GLASS.
- 10 5/8" CELLULAR COMPOSITE TRIM AROUND WINDOW AND DOOR.
- 11 ALUMINUM CANOPY BY MAPES ARCHITECTURAL CANOPIES [mapescanopies.com, PHONE (888) 273-1132]. KYNAR COLOR: BLACK.
- 12 GALVANIZED STEEL CONNECTION ROD FRAMING ASSEMBLY, SUPPLIED BY CANOPY MANUFACTURER.
- 13 TREX SIGNATURE ALUMINUM RAILING SYSTEM w/ ROD RAIL KIT - BLACK COLOR
- 14 NEW CONCRETE STAIR, LANDING OR RAMP. SEE NOTE #21 FOR VERTICAL FINISH.
- 15 TREATED WOODEN DECK WITH COMPOSITE DECKING SYSTEM
- 16 REPAIR EXISTING BRICK BASE COURSE WHERE LOOSE. APPLY CEMENT PARGE COAT
- 17 3/4" CELLULAR PVC TRIM - PRIME AND PAINT
- 18 CLEAN EXISTING BRICK SURFACE BEFORE DIRECTLY APPLYING NEW DRYVIT SYSTEM BELOW ALL WINDOWS. COLOR/FINISH TO BE SELECTED
- 19 CLEAN EXISTING BRICK SURFACE BEFORE DIRECTLY APPLYING NEW DRYVIT SYSTEM AT BUILDING BASE - COLOR/FINISH TO BE SELECTED
- 20 EXISTING BASEMENT STAIRS TO REMAIN. DIMENSION SHOWN IS REQUIRED OVERHEAD CLEARANCE.
- 21 GRIND FACE OF POURED CONCRETE WALL SMOOTH AND BAG RUB FOR FINISH.
- 22 NEW ALUMINUM STOREFRONT DOOR w/ BLACK KYNAR FINISH.
- 23 NEW INSULATED HOLLOW METAL DOOR, PAINTED BLACK.
- 24 NEW WEATHERPROOF JUNCTION BOX BEHIND PARAPET FOR EXTERIOR SIGNAGE.
- 25 NEW WEATHERPROOF JUNCTION BOX LOCATED UNDER CANOPY FOR EXTERIOR SIGNAGE.



**LEFT SIDE (SOUTHWEST) ELEVATION**  
SCALE: 1/4" = 1'-0"



**REAR (NORTHWEST) ELEVATION**  
SCALE: 1/4" = 1'-0"

REVISIONS		REMARKS
NO.	DATE	

WE CERTIFY THAT THESE DOCUMENTS WERE PREPARED OR REVIEWED BY A LICENSED ARCHITECT UNDER THE LAWS OF THE COMMONWEALTH OF VIRGINIA.

ARCHITECT: J. J. HOTT, P.E.  
1200 COMMONWEALTH BLVD., SUITE 200  
FALLS CHURCH, VA 22034  
EXPIRES: JUNE 30, 2024

1/2" x 2 1/2" x 2 1/2"

ARCHITECTURE  
ENGINEERING  
INCORPORATED

**HOTT**

310 HAMMOND ST. • SUITE 100 • SALISBURY, MARYLAND  
(410) 749-7229 • FAX (410) 749-0001

**THE MAPLE ROOM**  
**MAC ST. HOSPITALITY GROUP LLC**  
377 MAPLE AVENUE WEST  
VIENNA, VIRGINIA

REAR AND LEFT SIDE ELEVATIONS

DATE: DEC. 2, 2021  
IOTT PROJ. NO.: 20-065  
DESIGN BY: KI  
DRAWN BY:  
SCALE: 1/4" = 1'-0"  
STAGE: RESUBMISSION  
DWG. FILE: 20-065 A.300

**A 301**