



Smoothie King #SK2022  
258 Maple Ave. East  
Vienna, VA 22180  
01/19/22



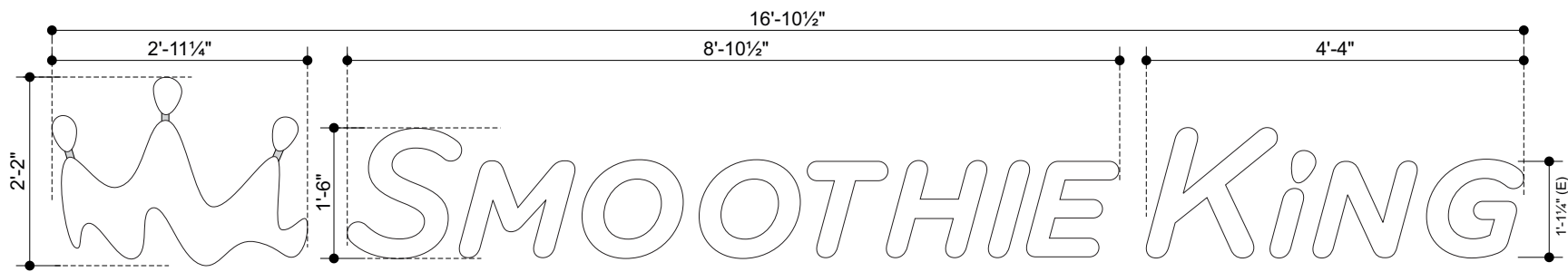
**1-800-967-2553**  
**www.allenindustries.com**

Customer Approval / Signature

Signature: \_\_\_\_\_ Date: \_\_\_\_\_

# Horiz Wall Mtd Channel Letters

Plastic Face Illuminated Letterset



## ELEVATION VIEW

Scale: 1/2"= 1'-0"

Area: 36.6 sq ft

## Smoothie King - Illuminated Channel Letters

Fabricated Aluminum Returns & Backs - PMS Cool Grey 7

1" Metallic Silver Trimcap

#7328 White Acrylic Faces

Illuminated by White LEDs & Power Supplies as Req.

External Disconnect Switch on 'G' in 'King'

Mounted to Wall via Non-Corrosive Exterior Grade Hardware and Sealed Penetrations.

•Illuminated using QuikMod 3 - 136.7 lumens/module

## COLORS



#7328 White Plex

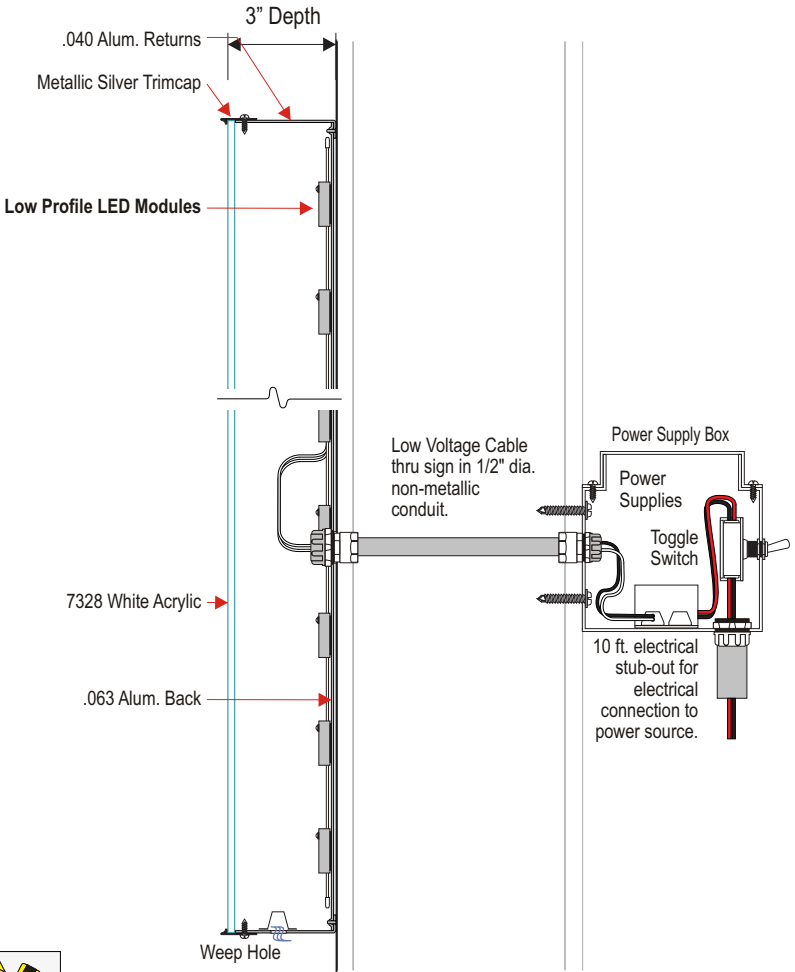


Paint to match PMS Cool Grey 7C



Metallic Silver 8886 Gem Trimcap or Equal

MOUNTING HARDWARE CHART			
	MASONRY	WOOD	METAL
1/4" ZINC PLATED STEEL THREADED ROD THRU WALL	•	•	•
3/8" LAGS WITH SHIELDS	•		
3/8" LAG BOLTS		•	
3/8" TOGGLE BOLTS			•
<b>NOTE:</b> 1.) THREADED ROD WILL BE PROVIDED STANDARD - ALL OTHER HARDWARE IS TO BE PROVIDED BY THE INSTALLER AS REQ.			

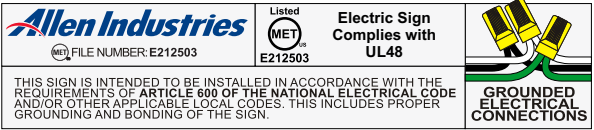


## GEN DETAIL

Scale: 3/16"= 1"



Signage shown is representative only.



**Allen Industries**  
YOUR BRAND AT ITS BEST™  
**1-800-967-2553**  
**www.allenindustries.com**

Copyright © 2020 Allen Industries, Inc.  
This is an original, unpublished drawing, created by Allen Industries, Inc. This drawing is submitted to you in confidence for your use solely in connection with the project being planned for you by Allen Industries, Inc. and is not to be shown to anyone outside your organization, nor used, reproduced, copied or exhibited in any fashion whatsoever. The designs shown on the drawing (except for any registered trademarks that may belong to a client of Allen Industries, Inc.) remain the property of Allen Industries, Inc.

**Client:**  
**Smoothie King**

**Address:**  
**258 Maple Ave. East**  
**Vienna, VA 22180**

**Date:**  
**01/19/22**

**Page #:**  
**2**

**File Name:**  
**SMK.028\_Vienna, VA\_301**

**Sales:**  
**JF**

**Design:**  
**BH**

**PM:**  
**DB**

#	Date	Description
1	04/26/22	—
2	05/20/22	—
3	06/29/22	—
4	—	—
5	—	—
6	—	—

**Initial**  
BH  
BH  
BH  
—  
—  
—

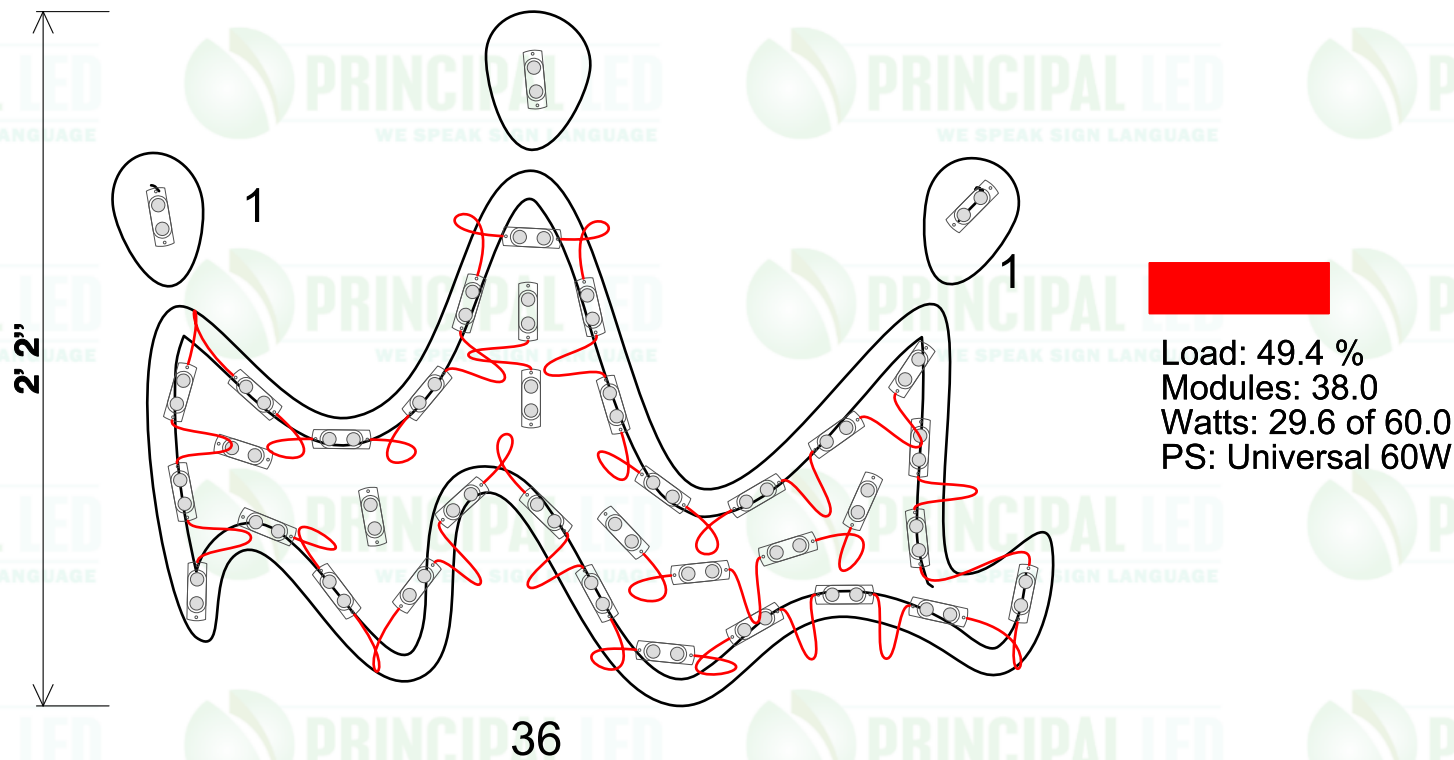
## Client Review Status

Allen Industries, Inc. requires that an approved drawing be obtained from the client prior to any production release or production release revision.

**Client Signature:**

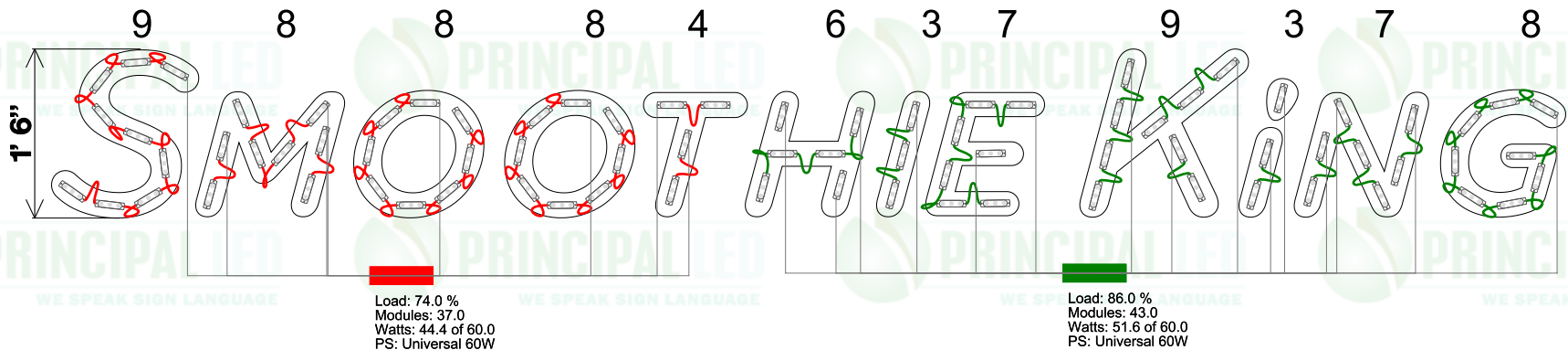
**Approval Date:**

REV.	<div><p>3490 Venture Dr. San Angelo, Tx. 76905 Ph. 1-325-227-4577 FAX 1-325-227-6841 www.p-led.com</p></div>		THESE DRAWINGS AND SPECIFICATIONS ARE THE CONFIDENTIAL PROPERTY OF PRINCIPAL LED, LLC.. ANY REPRODUCTION OR USE WITHOUT PRIOR WRITTEN CONSENT IS PROHIBITED			
1.			TITLE Crown - 120834			
NOTE:  MAX MODS PER SERIES: 38 MAX MODS PER PS: 76		DATE: 23 Jun 2022		DRAWN BY: Matt Davis	AMP DRAW: 1.10 A	
		SIGN HEIGHT 26 in	SIGN DEPTH 3 in	FACE MATERIAL: 7328	LIGHTING: Face Lit	



ESTIMATED PRODUCT PER SIGN		CAUTION: THIS LAYOUT IS ONLY AN ESTIMATE. Channel letter depth, face color, material, and thickness can vary which may effect the number of modules required. To ensure accuracy, it is recommended that you test light in a darkened environment prior to installing or shipping to the site to ensure the light output is commercially acceptable. Final material estimates are the responsibility of the sign manufacturer. Unless noted in header, Layout is based on the use of acrylic face material.
(38) Qwik Mod 2 Modules (UL#: PL-QM2-TW150-P, SKU#: M-QMDX0-71)	(1) pcs Universal 60W Driver(s) (UL#: PL-60-12-U, SKU#: P-OH060-12-PL)	

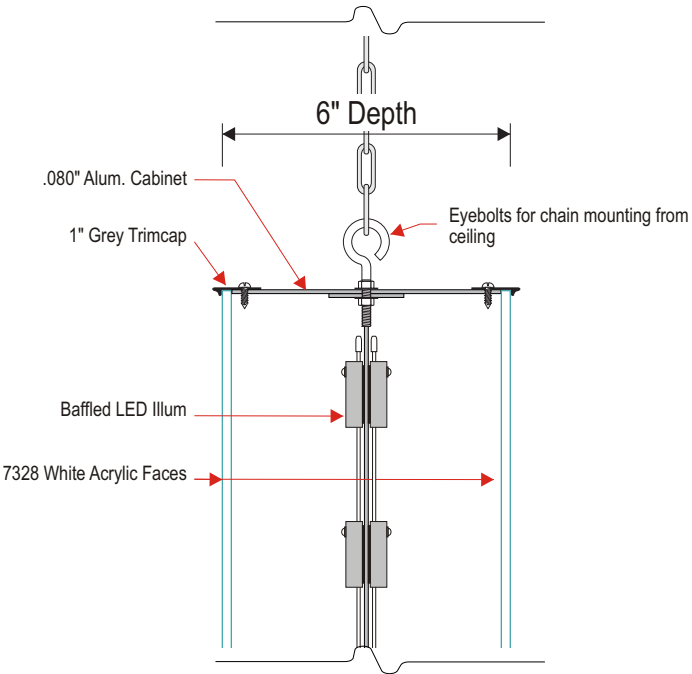
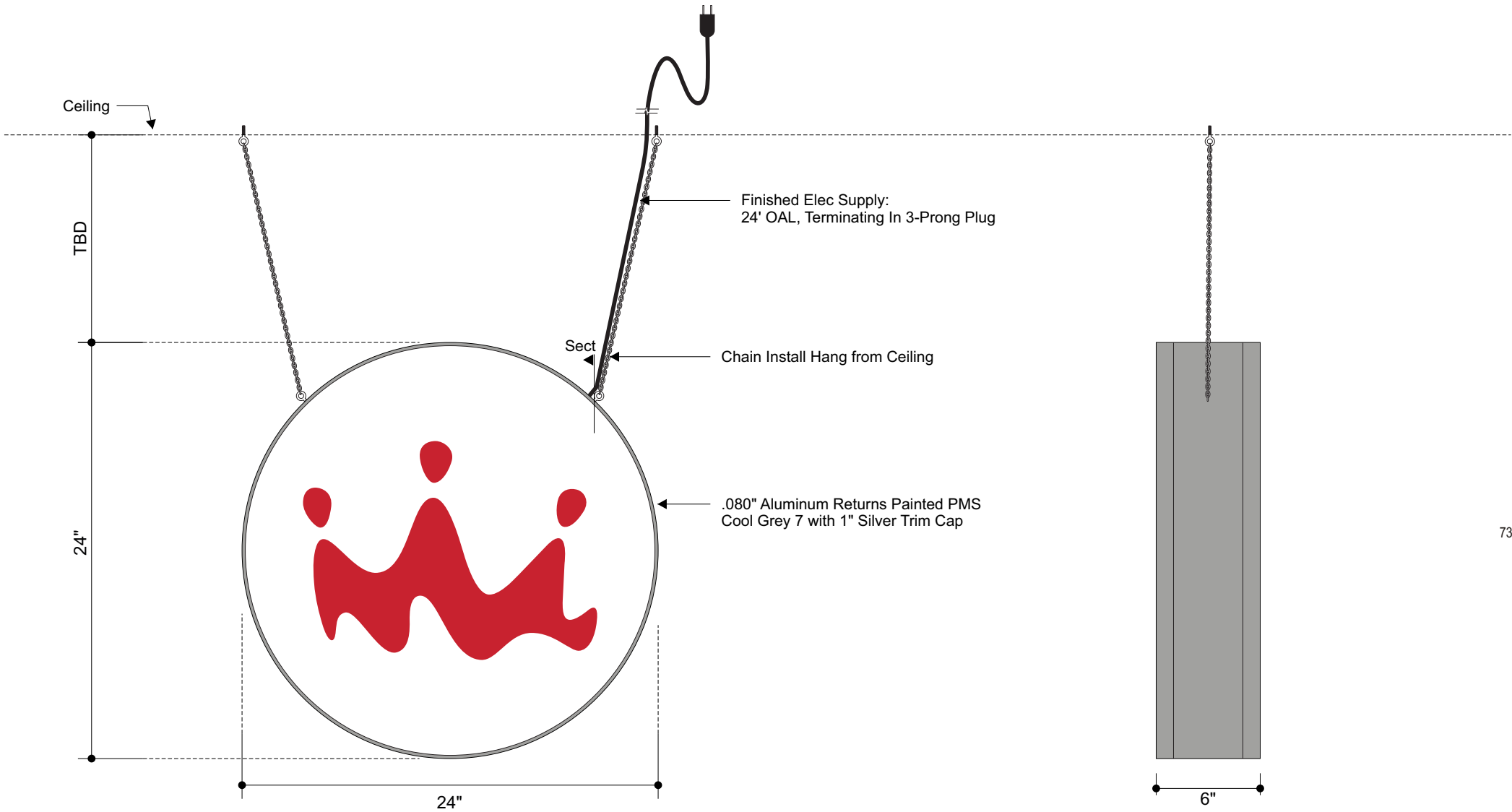
REV.		 <div>3490 Venture Dr. San Angelo, Tx. 76905 Ph. 1-325-227-4577 FAX 1-325-227-6841 www.p-led.com</div>	THESE DRAWINGS AND SPECIFICATIONS ARE THE CONFIDENTIAL PROPERTY OF PRINCIPAL LED, LLC.. ANY REPRODUCTION OR USE WITHOUT PRIOR WRITTEN CONSENT IS PROHIBITED			
1.			TITLE			
<div>NOTE:</div> <div>MAX MODS PER SERIES: 25</div> <div>MAX MODS PER PS: 50</div>			Smoothie King-104811			
		DATE: 01 Nov 2021		DRAWN BY: Shelby Little		AMP DRAW: 2.20 A
		SIGN HEIGHT 18in O.A.	SIGN DEPTH 3 in	FACE MATERIAL: 7328	LIGHTING: Face Lit	



ESTIMATED PRODUCT PER SIGN			CAUTION: THIS LAYOUT IS ONLY AN ESTIMATE. Channel letter depth, face color, material, and thickness can vary which may effect the number of modules required. To ensure accuracy, it is recommended that you test light in a darkened environment prior to installing or shipping to the site to ensure the light output is commercially acceptable. Final material estimates are the responsibility of the sign manufacturer. Unless noted in header, Layout is based on the use of acrylic face material.		
(80) Qwik Mod 3 Modules	(2) pcs Universal 60W Driver(s)				
(UL#: PL-QM3-TW200-P, SKU#: M-QMTX0-71)	(UL#: PL-60-12-U, SKU#: P-OH060-12-PL)				



D/F Hanging Disk Sign
Plastic Face Illuminated



GEN DETAIL
Scale: 1/4"= 1"

ELEVATION VIEW
Scale: 1 1/2"= 1'-0"
Area: 4 Sq.Ft.

COLORS

- #7328 White Plex
- 3M 3630-33 Red Translucent
- Paint to match PMS Cool Grey 7C
- Metallic Silver 8886 Gem Trimcap or Equal

Illuminated D/F Hanging Window Sign

Fabricated Aluminum Returns - PMS Cool Grey 7
1" Grey Trimcap
#7328 White Acrylic Faces with Vinyl Logo Applied 1st Surface
Illuminated by White LEDs & Power Supplies as Req.
Finished Elec Supply:24' OAL, Terminating In 3-Prong Plug.
Install Hanging Chain from Ceiling (TBD)
\*Both sides same graphic

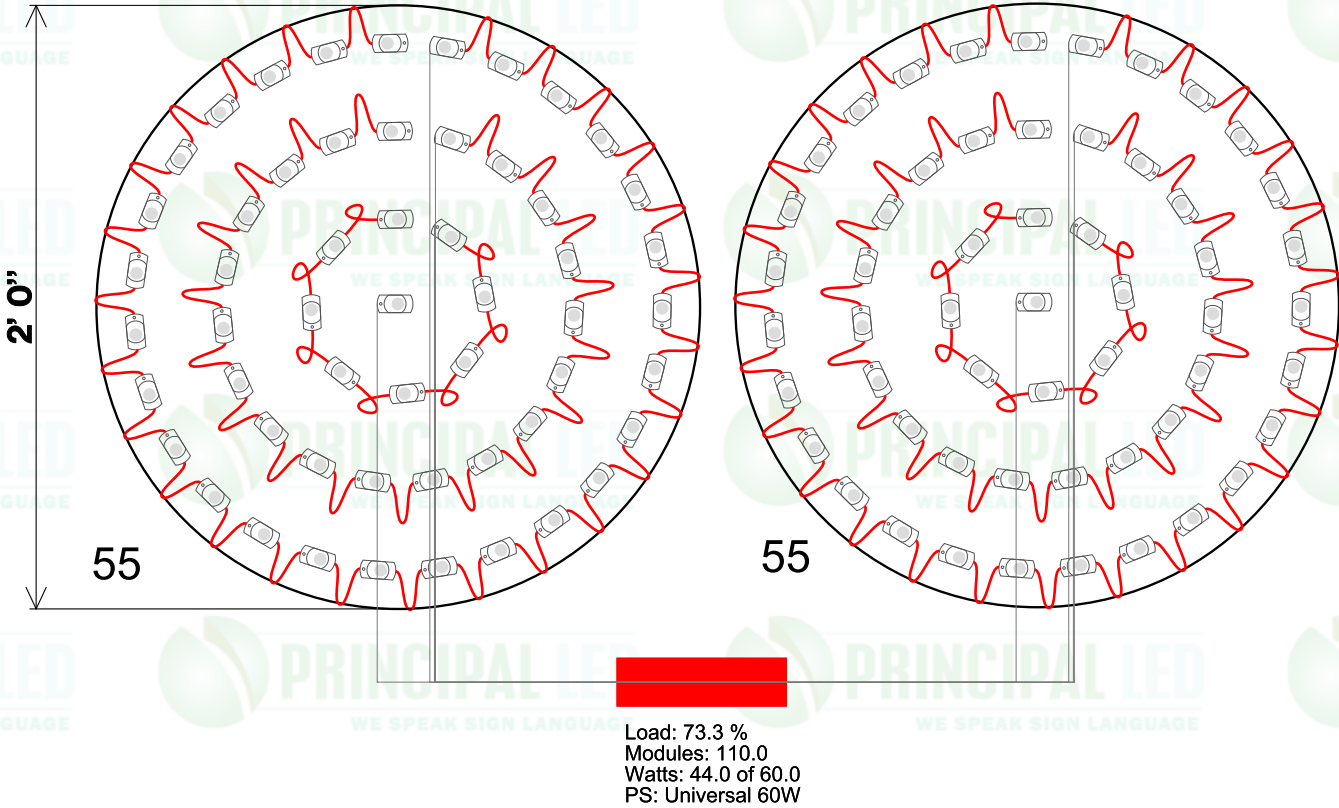
Illuminated using QuikMod 1 - 47.2 lumens/module

Note:
> Exact Location to Vary with Each Site

Allen Industries logo and electrical safety information, including a warning about proper grounding and bonding of the sign.

Table with 3 columns: Mounting Hardware, Material, and Notes. It details the required hardware for different mounting surfaces (Masonry, Wood, Metal) and includes a note about the threaded rod and other hardware requirements.

REV.		 3490 Venture Dr. San Angelo, Tx. 76905 Ph. 1-325-227-4577 FAX 1-325-227-6841 www.p-led.com	THESE DRAWINGS AND SPECIFICATIONS ARE THE CONFIDENTIAL PROPERTY OF PRINCIPAL LED, LLC.. ANY REPRODUCTION OR USE WITHOUT PRIOR WRITTEN CONSENT IS PROHIBITED			
1.			TITLE Smoothie King-104811			
NOTE: MAX MODS PER SERIES: 75 MAX MODS PER PS: 150 MAX ROW SPACING: 3.5in			DATE: 02 Nov 2021	DRAWN BY: Shelby Little	AMP DRAW: 1.10 A	
			SIGN HEIGHT 24in O.A.	SIGN DEPTH 4in	FACE MATERIAL: 7328	LIGHTING: Face Lit



ESTIMATED PRODUCT PER SIGN		CAUTION: THIS LAYOUT IS ONLY AN ESTIMATE. Channel letter depth, face color, material, and thickness can vary which may effect the number of modules required. To ensure accuracy, it is recommended that you test light in a darkened environment prior to installing or shipping to the site to ensure the light output is commercially acceptable. Final material estimates are the responsibility of the sign manufacturer. Unless noted in header, Layout is based on the use of acrylic face material.
(110) Qwik Mod 1 Modules (UL#: PL-QM1-TW110-P, SKU#: M-QMSX0-71)	(1) pcs Universal 60W Driver(s) (UL#: PL-60-12-U, SKU#: P-OH060-12-PL)	