

Front View
Scale: 3/4" = 1'
SF: 33

DESCRIPTION OF WORK:

MANUFACTURE AND INSTALL ONE SET OF 21" UPPER AND LOWER CASE INTERNALLY ILLUMINATED CHANNEL LETTERS MOUNTED ON A RACEWAY AND ONE (1) 11" SINGLE FACED INTERNALLY ILLUMINATED LOZENGE .

MESSAGE: DERMUTOPIA WELLNESS

MATERIALS: CHANNEL LETTERS AND LOZENGE SIGN

- .040 PRE-PAINTED WHITE ALUMINUM FILLERS AND .063 BACKS (5" DEEP)

- INTERIOR OF LETTERS TO BE WHITE FOR MAXIMUM ILLUMINATION

LIGHTING: INTERNAL SOURCE OF WHITE LED MODULES (2400 LUMENS) POWERED BY 12 VOLT POWER PACKS LOCATED IN THE RACEWAY

NOTE: ALL WIRING AND MATERIALS TO BE UL APPROVED

FACES: ALL FACES CONSTRUCTED OF 3/16" WHITE #2447 ACRYLIC

NOTE: LETTERS FACES: OVERLAID WITH 3M 3630-136 TRANSLUCENT LIME GREEN

NOTE: LOZENGE FACE OVERLAID WITH 3M 3630-38 TRANSLUCENT

FUCHSIA VINYL AND ALL GRAPHICS WHITE MASK

NOTE: ALL FACES BANDED WITH 1" PEARL GRAY SILVERTRIM RETAINERS

HELD IN PLACE WITH #10 PAN HEAD SCREWS PAINTED PEARLY GREY

ELECTRICAL RUN TO SIGN LOCATION BY OTHERS. ONE (1) 20 AMP 120

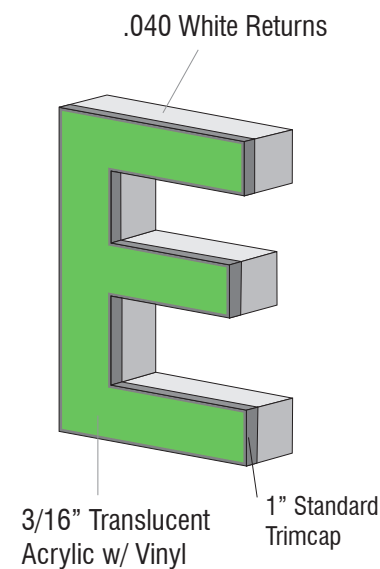
VOLT DEDICATED CIRCUIT

NOTE: SMI SIGNS TO SUPPLY FLUSH MOUNTED PHOTO CELL AND TOGGLE DISCONNECT SWITCH

RACEWAY: TO BE ALL ALUMINUM CONSTRUCTION PAINTED BENJAMIN MOORE SEAPEARL OC-19 ON ALL EXTERIOR SURFACE

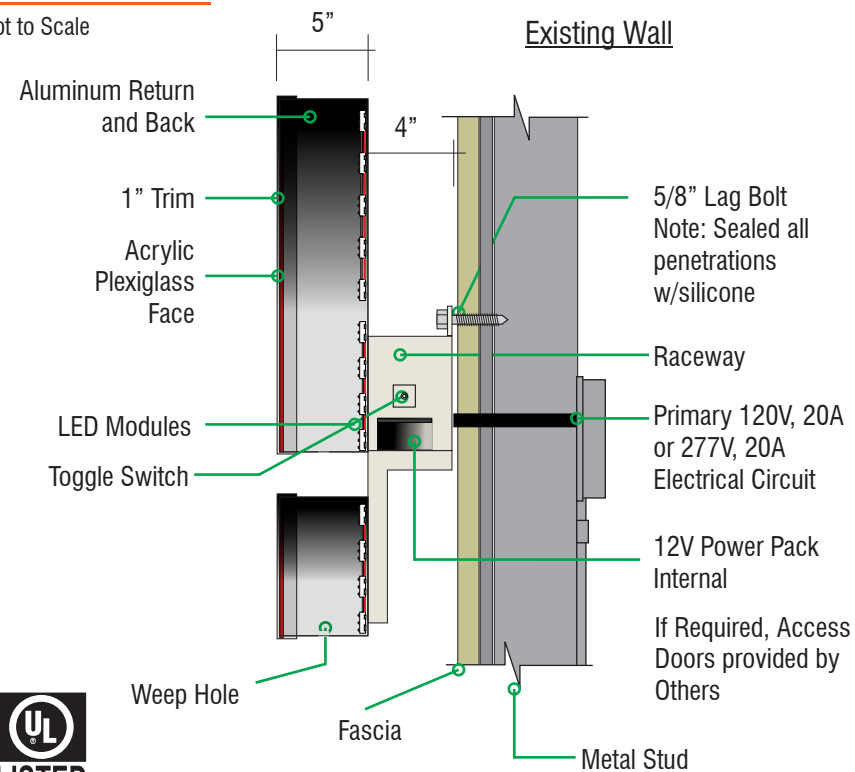
MOUNTING: RACEWAY INSTALLS FLAT AGAIN PRECAST WALL WITH HILTI ANCHORS AS REQUIRED

NOTE: ALL PENETRATIONS TO BE SEALED WITH PAINTABLE WEATHER



Typical Construction

Not to Scale



SMI Sign Systems, Inc.

integrated | architectural sign solutions
- A Veteran Owned Small Business -

3903 Cornell Place
Frederick, MD 21703
301-468-1132
www.smisigns.com

Account Representative

Max Aronow (x111)
max@smisigns.com

Project Manager

X:_2022\D\Dermutopia Wellness\221523 -
Building ID Sign\Design\

Approval

- ☐ Approved
☐ Approved with Changes
☐ Revise / Resubmit

Signature

Date

SMI Sign Systems Inc. is not responsible for typesetting, or layout errors after customer sign-off. Changes to typesetting, layouts, reprints or any aspect of production shall be the sole financial responsibility of the customer. Should an error occur within our control, SMI Sign Systems, Inc. will make best effort to rectify. SMI Sign Systems, Inc. will not be liable for costs or damages beyond costs associated with correction of the sign.

Submittals & Revisions

7/26/2022 Adam

Project

DERMUTOPIA WELLNESS

527 E MAPLE AVENUE
VIENNA, VA 22180

Description

Channel Letters

Drawing No.

Sheet

221523

1.0

3903 Cornell Place
Frederick, MD 21703

301-468-1132
www.smisigns.com

Account Representative
Max Aronow (x111)
max@smisigns.com

Project Manager

X:_2022\D\Dermutopia Wellness\221523 - Building ID Sign\Design\

Approval

☐ Approved

☐ Approved with Changes

☐ Revise / Resubmit

Signature

Date

SMI Sign Systems Inc. is not responsible for typesetting or layout errors after customer sign-off. Changes to typesetting, layouts, reprints or any aspect of production shall be the sole financial responsibility of the customer. Should an error occur within our control, SMI Sign Systems, Inc. will make best effort to rectify. SMI Sign Systems, Inc. will not be liable for costs or damages beyond costs associated with correction of the sign.

Submittals & Revisions

7/26/2022 Adam

Project

DERMUTOPIA
WELLNESS

527 E MAPLE AVENUE
VIENNA, VA 22180

Description

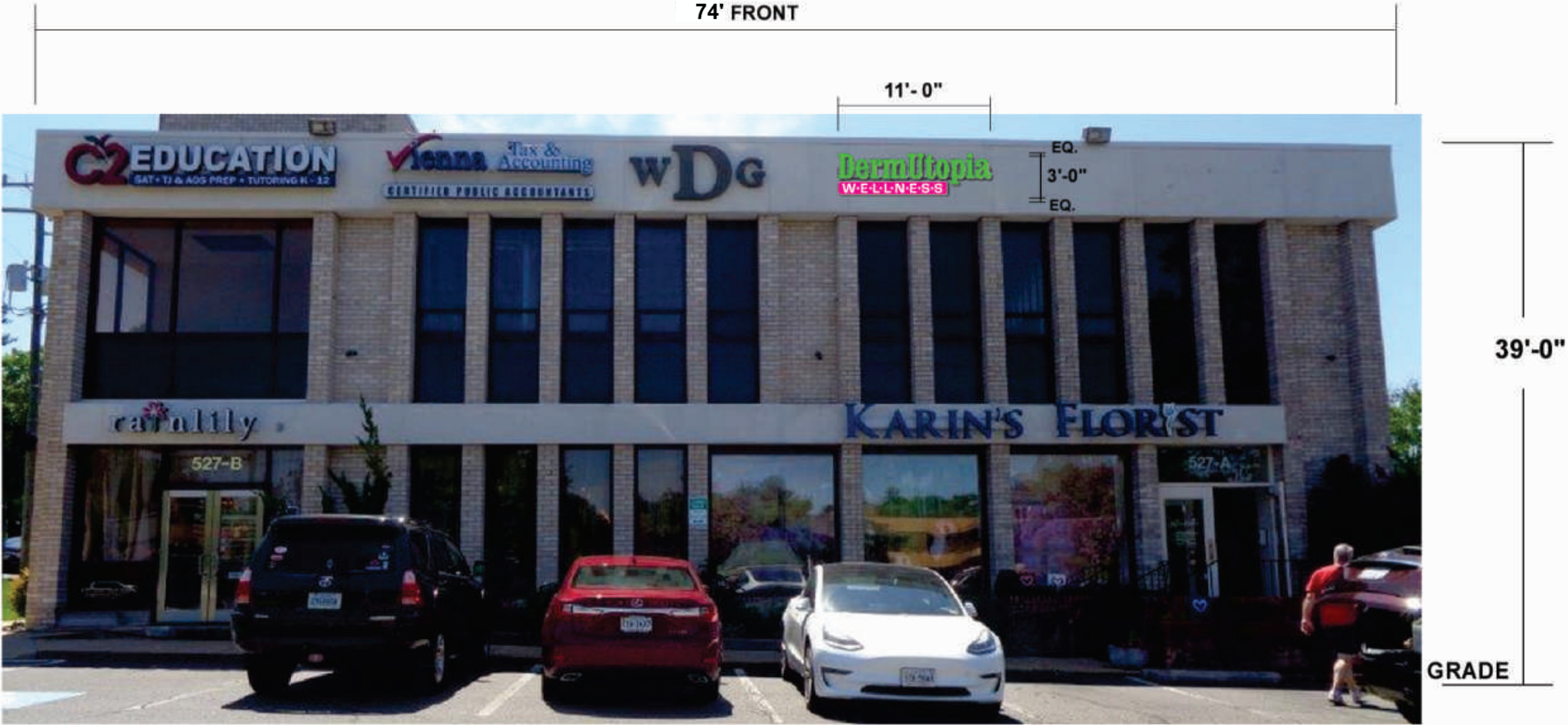
Channel Letters

Drawing No.

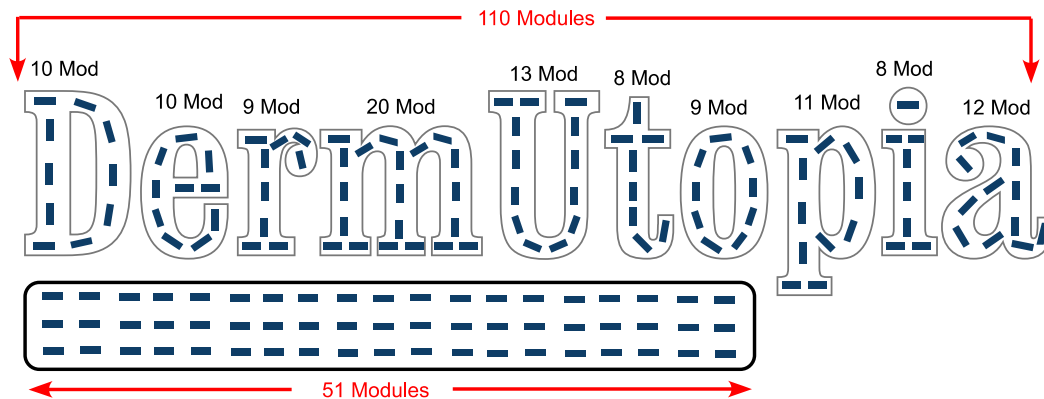
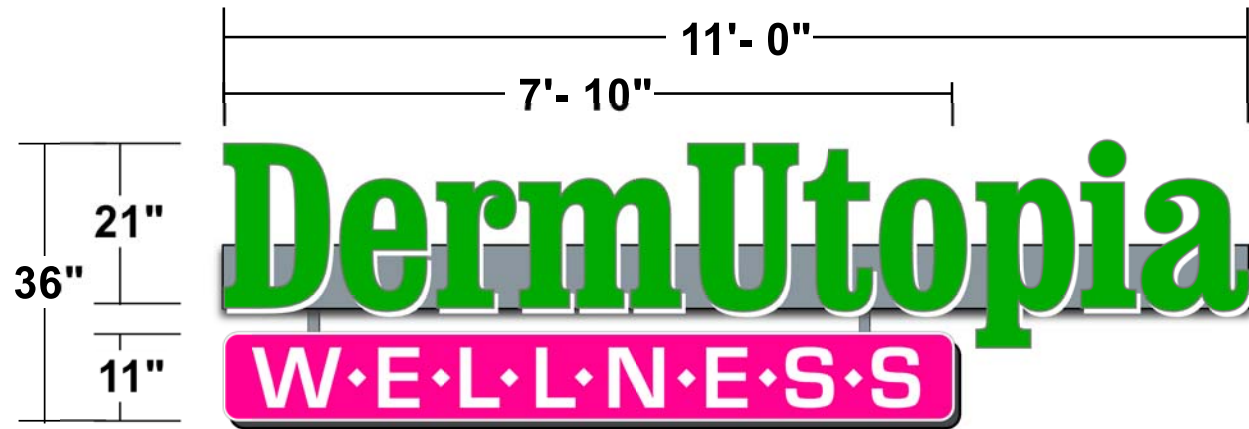
Sheet

221523

2.0



As Installed - Not to Scale - Illustrative Purpose Only



30 lumens per foot
 161modules for entire sign
 $31 \times 138 = 5635$ (Total Lumens)
 $4830 \div 33$ (square feet of sign) = 146.36
 $146.36 \div 3$ (reduction for sign face materials that absorb part of the light output) = 48.78
 total lumens per sign output