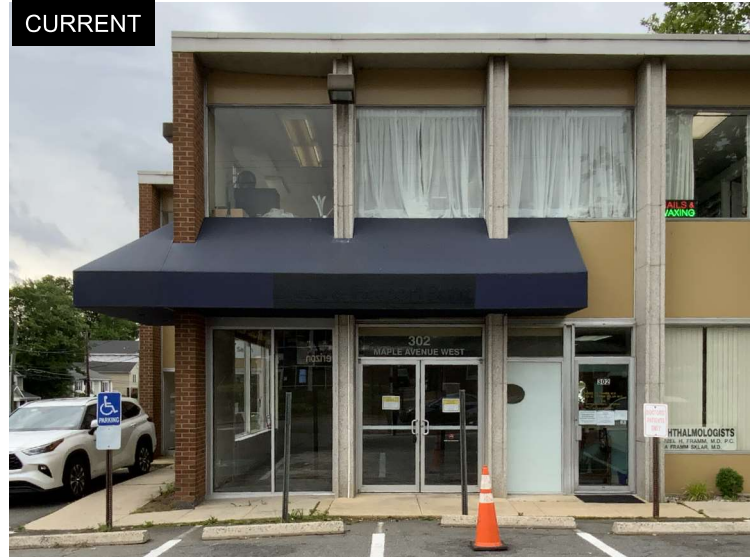
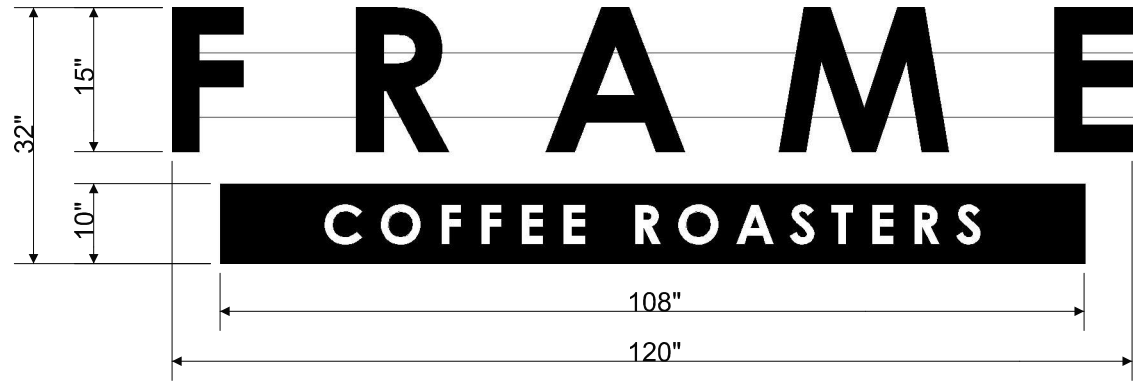


SPECIFICATIONS - "FRAME COFFEE ROASTERS" Illuminated LED Channel Letters - Vienna, VA



ELEVATION DETAIL  
SCALE : 1/2" = 1'

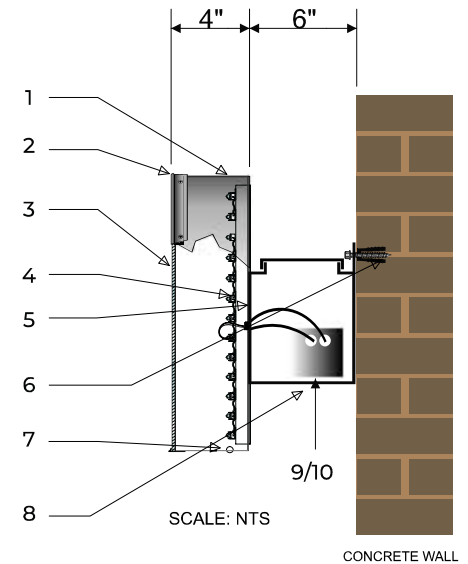


Store Front: 20 FT  
Proposed Sign Area: 26.67 SF

Sign Type:  
Front Lit Channel Letters on Raceway

- Sign Detail:
1. 040 Aluminum 4" Returns  
Painted WHITE Inside  
Finish: BLACK
  2. 1" Jewelite BLACK Trim
  3. 3/16" Acrylic WHITE #2447  
w/ 3M Day/Night Vinyl
  4. LED: SSLight KPL Warm WHITE  
Temperature: 3000K/ Total Lumen 80 lm
  5. 040 Aluminum Back WHITE
  6. Mounting: 3" Anchor Role Plug Screws  
(All Penetrations to be Sealed  
w/ Silicon Adhesive)
  7. 1/4" Drain Holes
  8. 063 Aluminum Raceway 8"H x 6"D  
Finish: Color to Match Facade
  9. Transformer 12V/0.5A  
Unionelecom
  10. Disconnect Switch Installed as per  
UL & NEC Codes

Notes:  
-UL Listed | Suitable for Wet Locations



**EXTERIOR APPLICATION**

This sign is intended to be installed in accordance with the requirements of Article 600 of the National Electrical Code and/or other applicable local codes. This includes proper grounding and bonding of the sign.



**BEST SIGN USA**

8740-18 Cherry Lane, Laurel, MD 20707  
T: 301-490-6252 | F: 301-490-6253  
wssign@gmail.com | bestsignusa.com

**FRAME COFFEE ROASTERS**  
302 Maple Ave W  
Vienna, VA 22180

Date:  
10/14/22

Drawn by:  
BL

Drawing No.  
1 of 1

Sheet No.  
1 of 1

Revisions:

- v1 \_\_\_\_\_
- v2 \_\_\_\_\_
- v3 \_\_\_\_\_
- v4 \_\_\_\_\_
- v5 \_\_\_\_\_