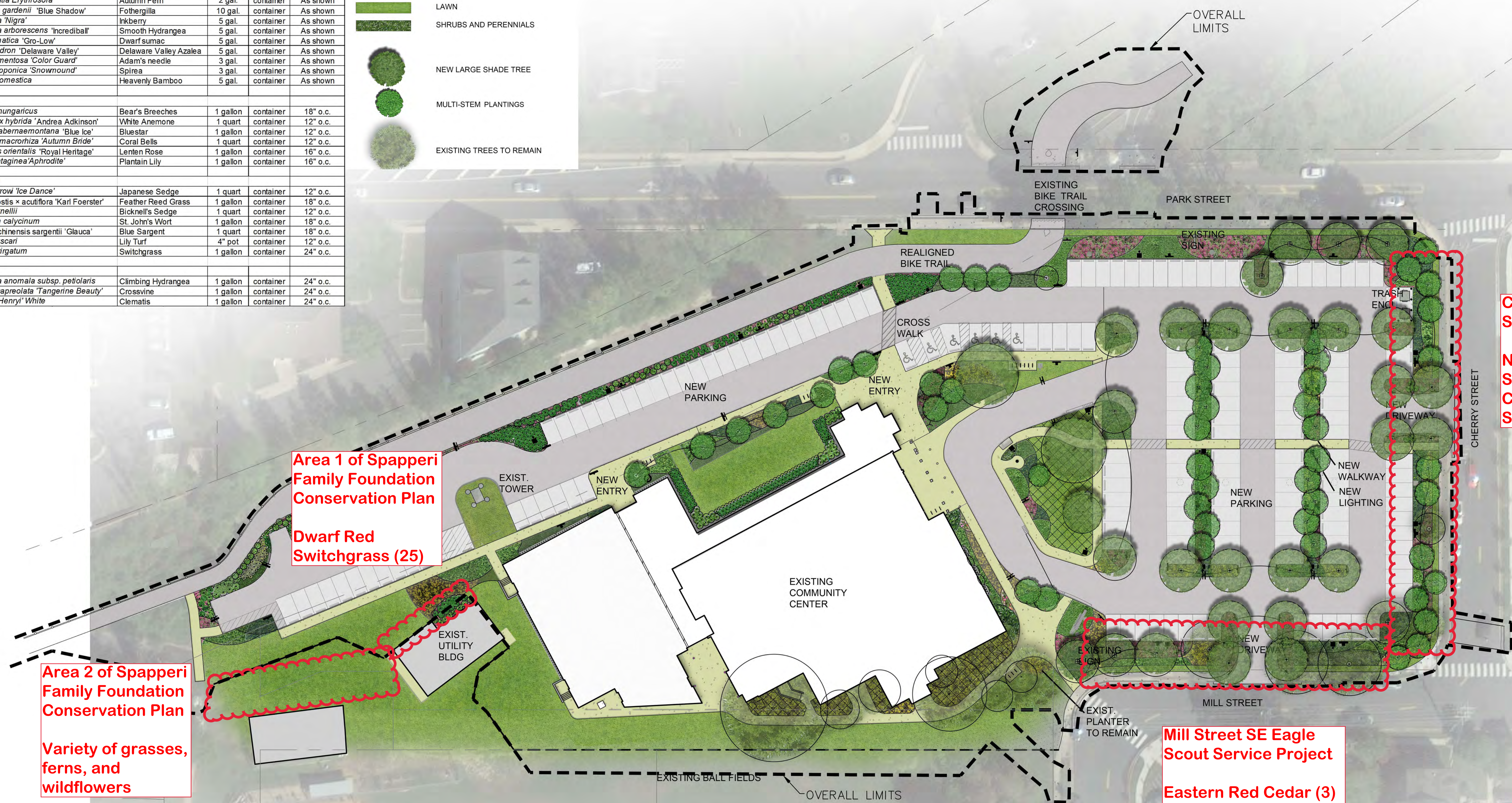


PLANT LIST						
Qty.	Key	Common Name	Size	Condition	Spacing	
TREES						
20	TBN	<i>Betula nigra</i> 'Dura Heat'	River Birch	12 ft. ht.	B&B	As shown
13	TPA	<i>Plantanus x acerifolia</i> 'Bloodgood'	London Plane	2" cal.	B&B	As shown
17	TPO	<i>Prunus 'Okame'</i>	Okame Cherry	2" cal.	B&B	As shown
5	TQP	<i>Quercus phellos</i> 'Hightower'	Willow Oak	2" cal.	B&B	As shown
4	TSJ	<i>Sophora japonica</i>	Scholar Tree	2" cal.	B&B	As shown
2	TSX	<i>Styrax japonicus</i>	Japanese Snowbell	8 ft. ht.	B&B	As shown
14	TVA	<i>Vitex agnus-castus</i>	Chaste Tree	8 ft. ht.	B&B	As shown
SHRUBS						
45	SDE	<i>Dennstaedtia Erythrosora</i>	Autumn Fern	2 gal.	container	As shown
12	SFG	<i>Fothergilla gardenii</i> 'Blue Shadow'	Fothergilla	10 gal.	container	As shown
24	SIG	<i>Ilex glabra</i> 'Nigra'	Hollyberry	5 gal.	container	As shown
28	SHA	<i>Hydrangea arborescens</i> 'Incrediball'	Smooth Hydrangea	5 gal.	container	As shown
322	SRA	<i>Rhus aromatica</i> 'Gro-Low'	Dwarf sumac	5 gal.	container	As shown
144	SRD	<i>Rhododendron</i> 'Delaware Valley'	Delaware Valley Azalea	5 gal.	container	As shown
11	SIF	<i>Yucca filamentosa</i> 'Color Guard'	Adam's needle	3 gal.	container	As shown
32	SN	<i>Spiraea nipponica</i> 'Snowmound'	Spirea	5 gal.	container	As shown
43	SND	<i>Nandina domestica</i>	Heavenly Bamboo	5 gal.	container	As shown
PERENNIALS						
142	PAH	<i>Acanthus hungaricus</i>	Bear's Breeches	1 gallon	container	18" o.c.
4339	PAN	<i>Anemone x hybrida</i> 'Andrea Adkinson'	White Anemone	1 quart	container	12" o.c.
4850	PAT	<i>Amonia tabernaemontana</i> 'Blue Ice'	Blue Star	1 gallon	container	12" o.c.
1348	PHE	<i>Heuchera macrocarpa</i> 'Autumn Bride'	Coral Bells	1 quart	container	12" o.c.
291	PHO	<i>Helleborus orientalis</i> 'Royal Heritage'	Lenten Rose	1 gallon	container	16" o.c.
492	PHP	<i>Hosta plantaginea</i> 'Aphrodite'	Plantain Lily	1 gallon	container	16" o.c.
GROUND COVER						
5872	GCA	<i>Carex morrow</i> 'Ice Dance'	Japanese Sedge	1 quart	container	12" o.c.
501	GCB	<i>Calamagrostis x acutiflora</i> 'Karl Foerster'	Feather Reed Grass	1 gallon	container	18" o.c.
2135	GXC	<i>Carex bicknellii</i>	Bicknell's Sedge	1 quart	container	12" o.c.
1802	GHC	<i>Hypericum calycinum</i>	St. John's Wort	1 gallon	container	18" o.c.
602	GJC	<i>Juniperus chinensis sargentii</i> 'Glaucia'	Blue Sargent	1 quart	container	18" o.c.
2797	GLS	<i>Liriope muscari</i>	Lily Turf	4" pot	container	12" o.c.
203	GPV	<i>Panicum virgatum</i>	Switchgrass	1 gallon	container	24" o.c.
VINES						
48	VHA	<i>Hydrangea anomala subsp. petolaris</i>	Climbing Hydrangea	1 gallon	container	24" o.c.
51	VBC	<i>Bignonia capreolata</i> 'Tangerine Beauty'	Crossvine	1 gallon	container	24" o.c.
6	VCH	<i>Clematis</i> 'Henry's White'	Clematis	1 gallon	container	24" o.c.

SYMBOL LEGEND	
	CONCRETE PAVING
	PERMEABLE CONCRETE PAVING
	ASPHALT PAVING
	BIKE RACK
	LAWN
	SHRUBS AND PERENNIALS
	NEW LARGE SHADE TREE
	MULTI-STEM PLANTINGS
	EXISTING TREES TO REMAIN



Cherry Street SE Eagle Scout Service Project

Norway Spruce (2)
Serbian Spruce (2)
Cryptomeria Japonica (1)
Southern Magnolia (1)

Mill Street SE Eagle Scout Service Project

Eastern Red Cedar (3)
Norway Spruce (2)