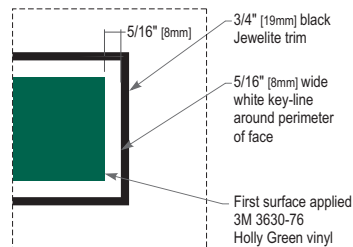


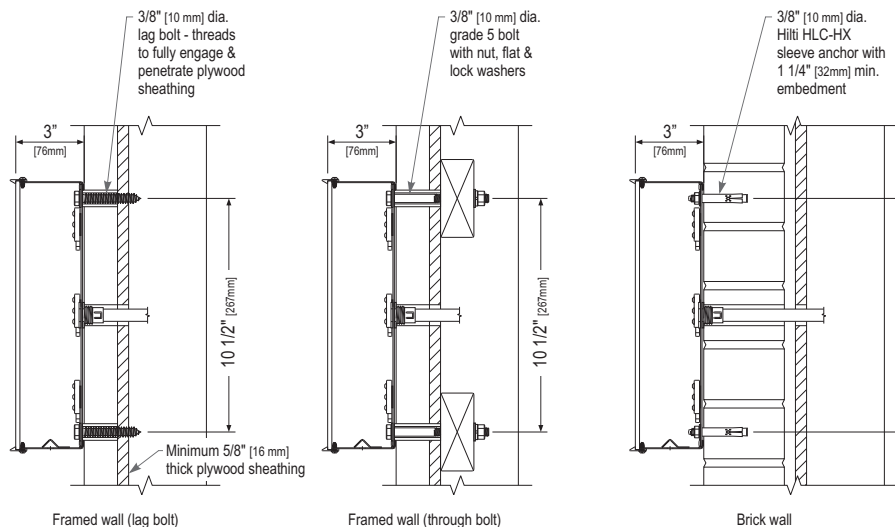
Illumination View & Mounting Locations

GE #GEMM71-2 7100° K White Tetra MiniMax LED, typ.
*or Starbucks approved equal

(108) GE #GEMM71-2 7100° K white Tetra MiniMax LEDs
(1) GE GEPS12-60U-NA power supply @ 0.58 amps
(1) 20 amp Circuit



Key-line Detail



Section View at Installation Detail

Sign Specifications:

Cabinet:

- .040" [1mm] aluminum returns painted black to match RAL 7021M.
- Areas using black paint to match RAL 7021M shall have a max 20% gloss level, match sample.
- 3/4" [19mm] Black Jewelite trim.
- Back to be .063" [2mm] aluminum.
- 3/16" [3mm] #7328 white acrylic face with first surface applied 3M 3630-76 Holly Green vinyl. Letters shall have a 5/16" [8mm] key-line around perimeter of face.
- Interior aluminum surfaces of sign cabinet to be painted white with Lacryl Starbrite.
- All exposed fasteners painted black to match RAL 7021M.
- All fasteners used in the assembly of internal components shall be coated to prevent corrosion.
- Internal structure of cabinet shall be per approved shop drawings.
- Graphic elements are internally illuminated using GE Tetra MiniMax LED system or Starbucks approved equal.

Regulatory:

- Sign must meet all regulations in the National Electric Code as well as any local or state electrical codes.
- As per NEC 600.6, sign is equipped with a service disconnect switch.
- Sign must be listed as an Electric Sign per Underwriters Laboratories UL48 and/or CSA and bear the appropriate UL, CUL or CSA relevant certification marks.
- Primary power by electrical contractor per NEC.



These Drawings and Specifications are confidential and shall remain the sole property of Starbucks Corporation, which is the owner of the copyright in this work. They shall not be reproduced (in whole or in part), shared with third parties or used in any manner on other projects or extensions to this project without the prior written consent of Starbucks Corporation.

This drawing is a Design Development Document. Site specific modifications made under the responsible charge of the Architect and/or Engineer-of-Record will be required prior to using this document for Bidding, Permitting, or Construction.

Size	Sq. Ft. ¹	Sq. Ft. ²	Volts	Amps
12" (305mm)	9.77	16.13	120	0.58

1: Figured as illuminated center part
2: Figured as complete signage



Design ID #11391G-HW

Linear Letterset - Green - 12in 305mm - High Wind Load Design

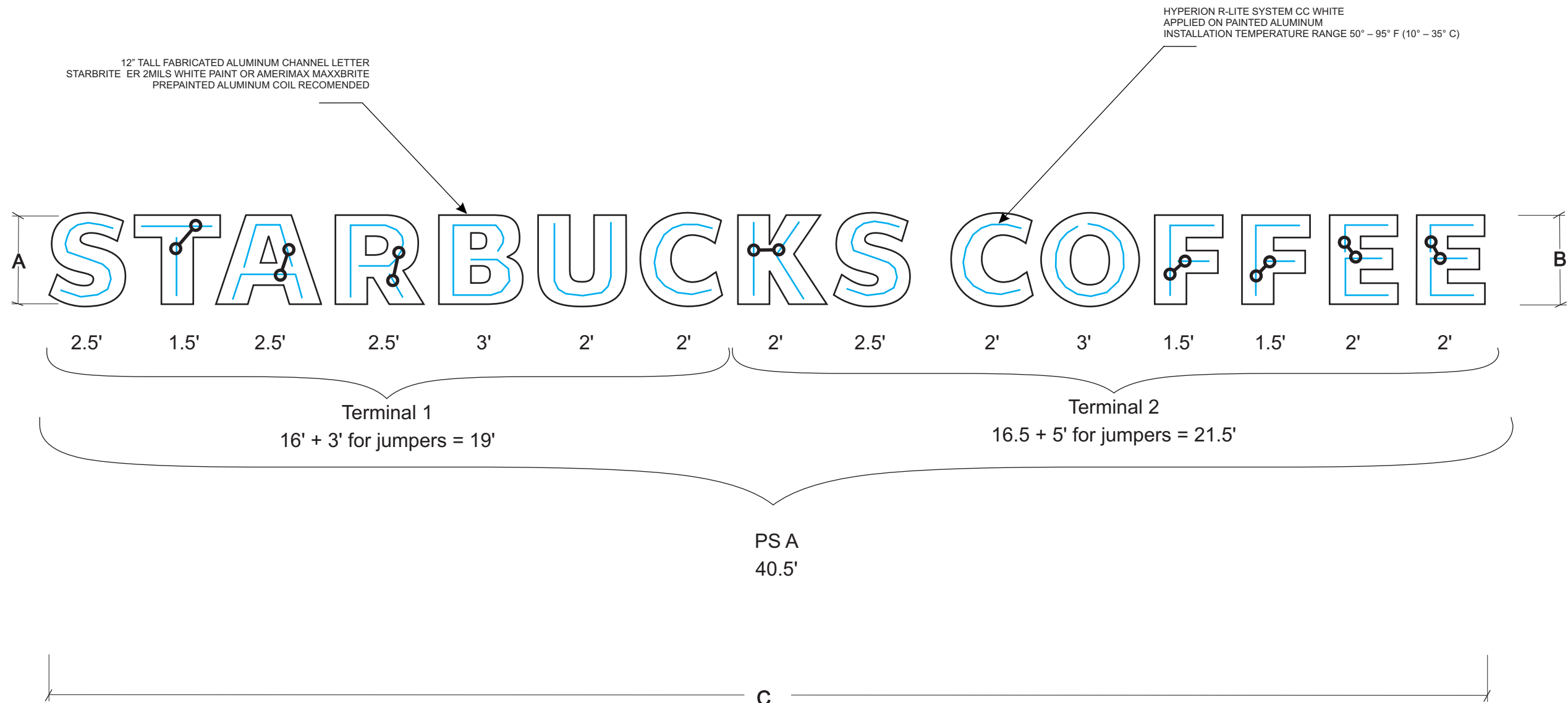
Starbucks does not manufacture the item(s) drawn or specified. Incorporation of design item is to be coordinated with item supplier and Architect and/or Engineer-of-Record. Manufacturer's name and contact information clearly visible on finished item. All items manufactured to final engineering specifications, provided by Architect of Record.

ID# 11391

NOTE: The Hyperion R-Lite™ strip is sold in 12.5ft & 25ft strips.

direct illumination/face lit/single line

remote power supply



NOTE: INDIVIDUAL FOOTAGE ARE ESTIMATES. ACTUAL LENGTHS MAY VARY.
DO NOT PRECUT STRIPS. ALWAYS WORK FROM the R-Lite REEL to avoid shortages
and unnecessary use of jumpers.

IMPORTANT! Required for ALL FIELD RETROFITS:

1.) Thoroughly Clean surface area with non-oil based solvent (409, alcohol or heptan).
2.) To ensure adhesion of LED strip to channel letter / cabinet place a support clamp
across the LED strip every 4 inches. It is required that you utilize support clamps
and / or use silicone adhesive across the LED strip every 4 inches. See page 1 of
installation manual for detailed retrofit instructions.

INSTALLATION NOTE: PLEASE READ INSTALL MANUAL BEFORE INSTALLATION.
IF YOU HAVE ANY QUESTIONS, PLEASE CONTACT YOUR SALES REPRESENTATIVE OR
OUR CUSTOMER SUPPORT TEAM. 877-383-4032

NOTE: It is recommended to test one or more letters before installation
for acceptable color and illumination.


Layouts/quotes/estimates are based upon Lumificent standards for typical usage. We utilize information that is provided to us, apply our standards, and provide you with layouts/quotes/estimates for the materials typically
required to complete the project. Guidelines do not take into account individual preferences or end customer preferences. FINAL MATERIAL REQUIREMENTS ARE THE RESPONSIBILITY OF THE SIGN MANUFACTURER.

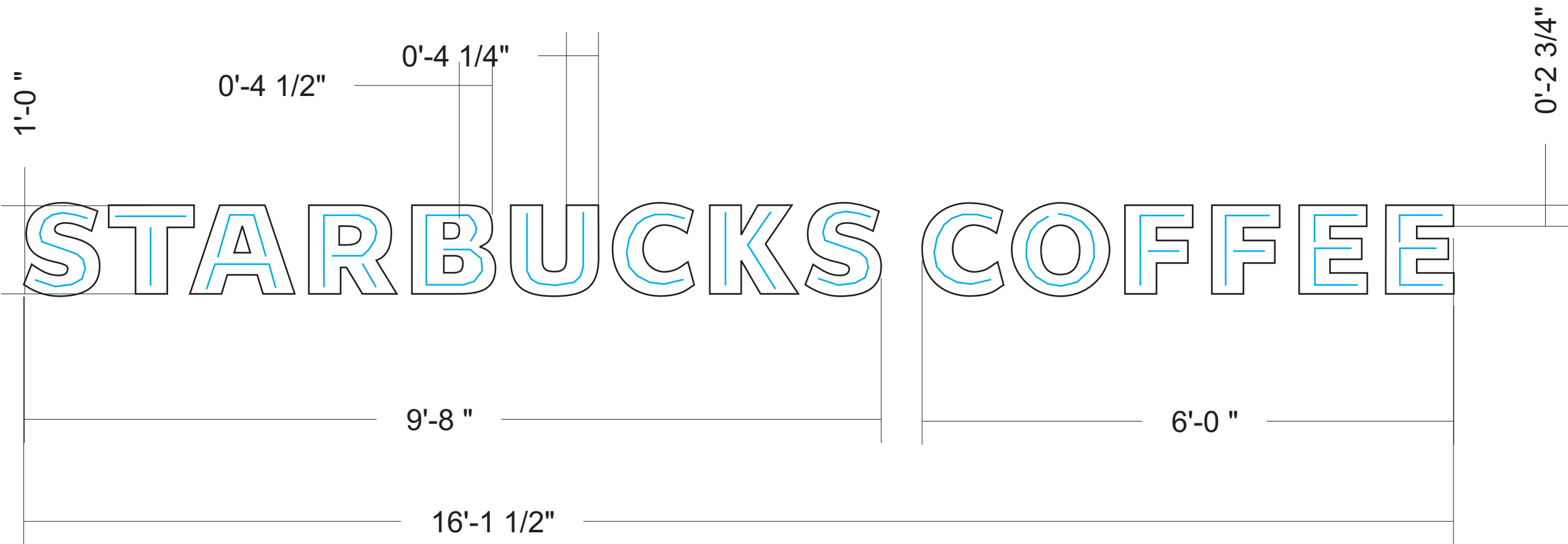
Jumper Connectors

NOTE: each jumper counts as 1 ft of LED strip &
must be factored into the power supply. DO NOT
EXCEED a total of 12ft this includes both strips
and the 1ft for the jumper.

IMPORTANT: When sending files for quotes all files must be in vector file format.
Raster images, photos or bitmaps are not recommended due to low resolution and
non-scalability which can have an affect on product selection, quantities, application
and illumination. Prices and quantities are estimates which are subject to change
based on raster images,photos or bitmap files.

12"

General Info		
	Unit of Measure feet/inches	Unit of Measure meter/millimeter
LETTER HEIGHT (A):	12"	305mm
LETTER HEIGHT (B):	12"	305mm
SIGN LENGTH (C):	16' - 1.5"	4.87m -38.1mm
LETTER DEPTH:	3"-5"	76mm-127mm
MAX LETTER STROKE:	4.5"	114.3mm
MIN LETTER STROKE:	2.75"	69.85mm
Power Requirements		
INPUT VOLTS:		120V
INPUT AMPERES:		0.6 max
TOTAL WATTAGE:		33 Watts
File	HRL-W-12-Starbucks Coffee S410.cdr	
	Quote# 13269	
No.	Revision / Issue	Date
Material List		
	Unit of Measure feet	Unit of Measure meter
TOTAL LINEAR FOOTAGE:	33 ft	10.05m
HRLSB-6500 White	33 ft	10.05m
HRLSB-HC Power Connector:	15	
HRLSB-JC JUMPER:	8	
HRLSB-24 Power Unit:		
HRLSB-24-BOGO		
HRLSB-96 Power Unit:	1	
HRLSB-277 Power Unit:		
Added Material List for Retrofits		
HRLSB-SC	99	
Customer Name and Address		
Starbucks Coffee Company 2401 Utah Avenue South 8th floor Seattle, WA 98134		
Customer Contact Katie O'Donnell		
Project 12 in. Starbucks Coffee SL - S410		
TAG	S410 - 12in (305 mm)	
Location / Store# XX		
Date	01/06/2010	1 / 2 Sheet
Scale	1:16	
 A Nexxus Lighting Company		
Lumificent 8752 Monticello Lane N. Maple Grove, MN 55369 Phone: (763) 424 3702 Fax: (763) 390 3135		
Designed By: LeeAnn		

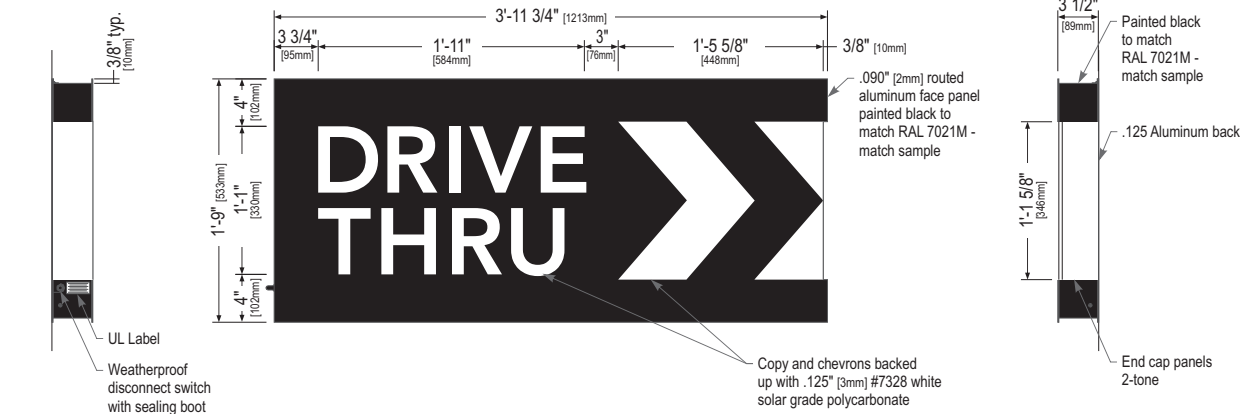


Project 12 in. Starbucks Coffee SL - S410	
TAG S410 - 12in (305 mm)	
Location / Store# XX	
Date 01/06/2010	2 / 2 Sheet
Scale 1:16	

LUMificient™
A Nexxus Lighting Company

Lumificient
8752 Monticello Lane N.
Maple Grove, MN 55369
Phone: (763) 424 3702
Fax: (763) 390 3135

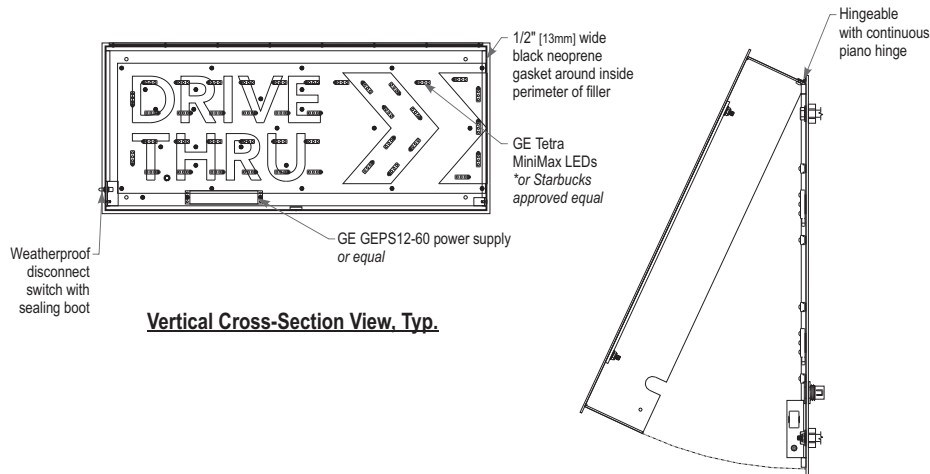
Designed By: LeeAnn



Left Side View

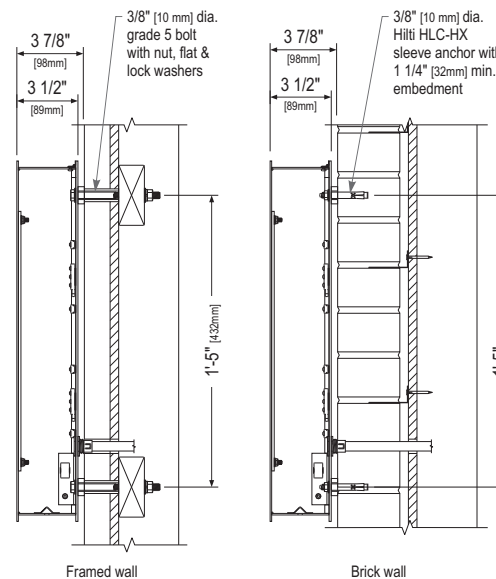
Front Elevation View

Right Side View



Vertical Cross-Section View, Typ.

Service Position View



Section View at Installation Detail

Sign Specifications:

Cabinet:

- Fabricated .090" [2mm] aluminum housing painted black to match RAL 7021M with 3M #180-10 white vinyl end caps as shown.
- Back to be .125" [3mm] aluminum.
- Directional copy and chevrons backed up with .125" [3mm] #7328 white solar grade polycarbonate. All polycarbonate face elements to be attached to aluminum face panel with weld studs.
- Interior aluminum surfaces of sign cabinet to be painted white with Lacryl Starbrite.
- Welded aluminum construction with no visible fasteners. Fasteners retaining the hinged face will be located on the bottom such that they are not visible. All fasteners used in the assembly of internal components shall be coated to prevent corrosion.
- Internal structure of cabinet shall be per approved shop drawings.
- Graphic elements are internally illuminated using GE Tetra MiniMax LED system or Starbucks approved equal. LED's to be mounted on back panel with self-contained power supply. All electrical components are removable for service.

Regulatory:

- Sign must meet all regulations in the National Electric Code as well as any local or state electrical codes.
- As per NEC 600.6, sign is equipped with a service disconnect switch.
- Sign must be listed as an Electric Sign per Underwriters Laboratories UL48 and/or CSA and bear the appropriate UL, CUL or CSA relevant certification marks.
- Primary power by electrical contractor per NEC.



These Drawings and Specifications are confidential and shall remain the sole property of Starbucks Corporation, which is the owner of the copyright in this work. They shall not be reproduced (in whole or in part), shared with third parties or used in any manner on other projects or extensions to this project without the prior written consent of Starbucks Corporation.

This drawing is a Design Development Document. Site specific modifications made under the responsible charge of the Architect and/or Engineer-of-Record will be required prior to using this document for Bidding, Permitting, or Construction.

Size	Sq. Ft. ¹	Sq. Ft. ²	Volts	Amps
21" (533mm)	4.52	6.96	120	0.85

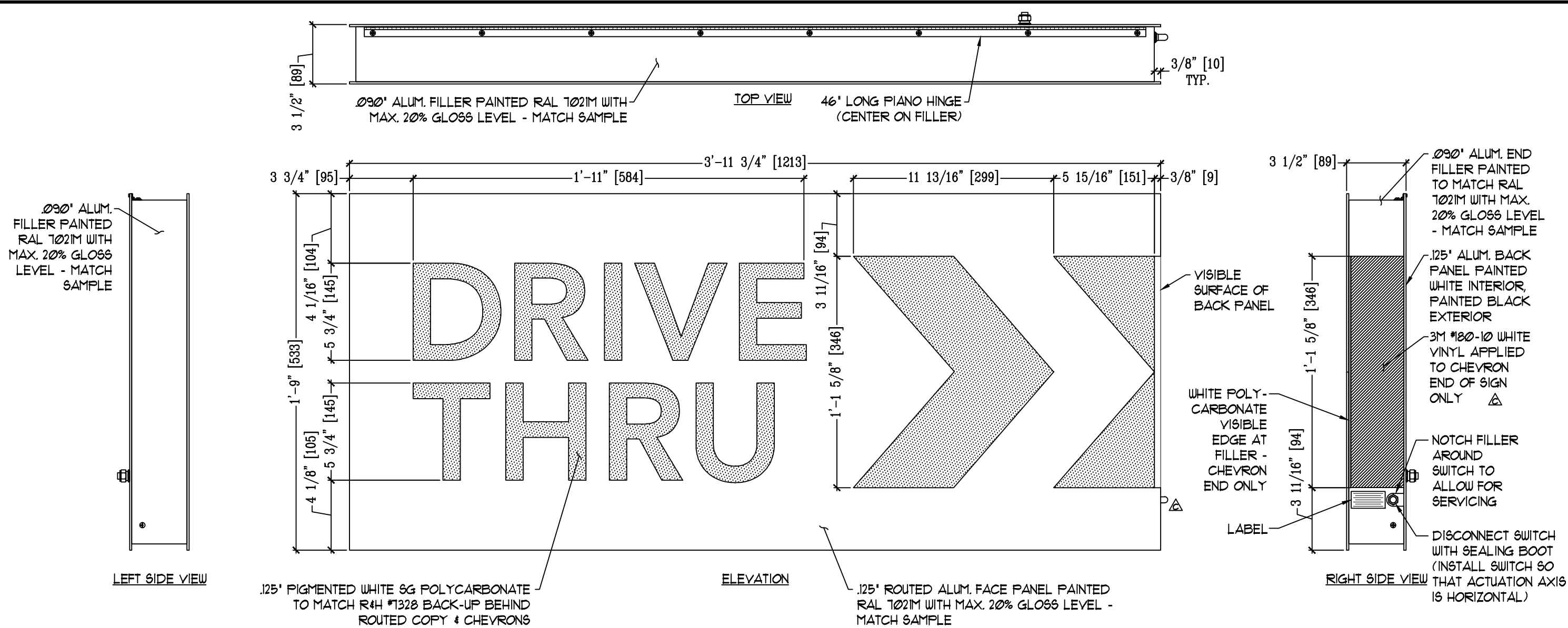
1: Figured as illuminated center part
2: Figured as complete signage



Design ID #14099

Drive Thru Illuminated Arrow Series Flush Mounted-RH - 48in 1220mm

Starbucks does not manufacture the item(s) drawn or specified. Incorporation of design item is to be coordinated with item supplier and Architect and/or Engineer-of-Record. Manufacturer's name and contact information clearly visible on finished item. All items manufactured to final engineering specifications, provided by Architect of Record.



NOTES:

1. Design is based on 150 mph 3 sec gust design wind speed per IBC 2009, Category II, Exposure C. Components & cladding, zone 5.

2. No additional wind catching surfaces are added to the building structure, to be confirmed site specifically.

3. Aluminum shapes shall be extruded from 6061-T6 alloy. Aluminum sheet shall be 3003-H14 alloy. Aluminum plate shall be 5052-H34 alloy.
4. All fasteners shall be stainless steel or otherwise coated to prevent corrosion.

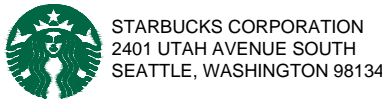
5. All wall penetrations shall be sealed to prevent water intrusion.

6. This design is prototypical and should not be used for site specific applications unless deemed suitable by a competent Professional Engineer.

ROUTED EDGES SHALL BE PAINTED TO MATCH FACE

ALL EXPOSED FASTENER HEADS SHALL BE PAINTED TO MATCH THE EXTERIOR CABINET FINISH

DIMENSIONS ON THIS DRAWING ARE DISPLAYED AS FEET & INCHES FOLLOWED BY MILLIMETERS IN BRACKETS. THE METRIC UNITS ARE ROUNDED TO THE NEAREST WHOLE MILLIMETER.



These documents represent prototypical design drawings created specifically for use by Starbucks Corporation. Use of this unpublished work for any purpose other than the intended application is strongly discouraged. Disclosure or reproduction of any of the information contained within these documents without the written consent of the owner is strictly prohibited.

SHT.
1
OF
5

BY:
JBL
DATE:
01/02/14

Project No.
13-0131
Drawing No.
B321005

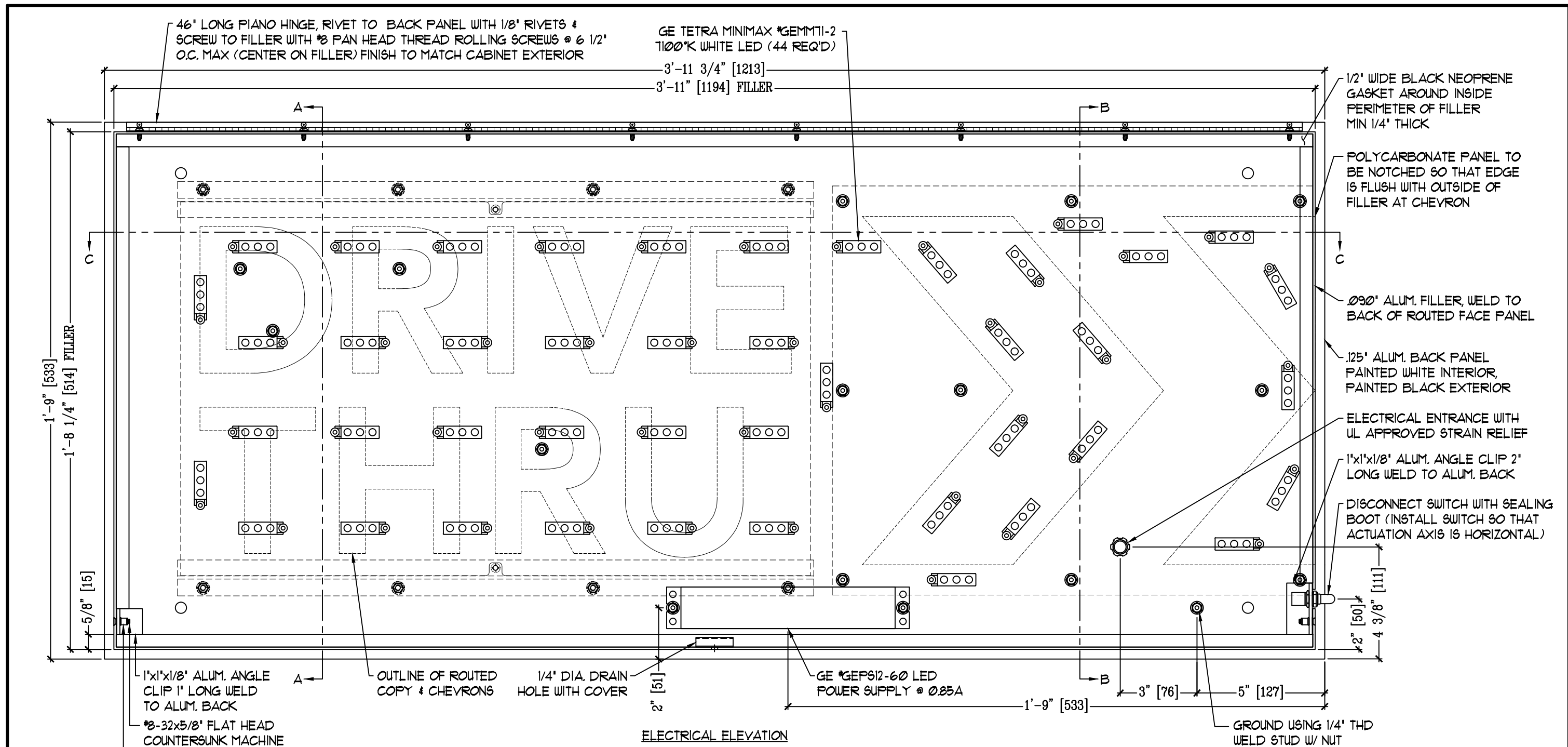
REV.	DATE	DESCRIPTION
1	4/22/15	ADDED VINYL NOTE ON CHEVRON SIDE OF SIGN CORRECTED LOCATION OF DISCONNECT SWITCH IN ELEVATION VIEW
2	9/15/14	ROUTED END LANGE, LANGED DISCONNECT SWITCH CHANGED HINGE ATTACHMENT, CHANGED POLYCARBONATE, REPAIRED POLYCARBONATE, ADDED VINYL TO THE SIGN, ADDED VINYL TO THE SIGN, ADDED VINYL TO THE SIGN, ADDED VINYL TO THE SIGN
3	7/10/14	CHANGED PAINT TO VINYL ON ENDS, EXTENDED PIANO HINGE, CHANGED WALL BUTTER TO LIQUID-TITE, SPECIFIED SWITCH ORIENTATION

REV.	DATE	DESCRIPTION
1	4/22/15	ADDED VINYL NOTE ON CHEVRON SIDE OF SIGN CORRECTED LOCATION OF DISCONNECT SWITCH IN ELEVATION VIEW
2	9/15/14	ROUTED END LANGE, LANGED DISCONNECT SWITCH CHANGED HINGE ATTACHMENT, CHANGED POLYCARBONATE, REPAIRED POLYCARBONATE, ADDED VINYL TO THE SIGN, ADDED VINYL TO THE SIGN, ADDED VINYL TO THE SIGN, ADDED VINYL TO THE SIGN
3	7/10/14	CHANGED PAINT TO VINYL ON ENDS, EXTENDED PIANO HINGE, CHANGED WALL BUTTER TO LIQUID-TITE, SPECIFIED SWITCH ORIENTATION

BY:	APR:
GHK	DSA
TRR	DSA
TRR	DSA

GRAPHICS DEPICTED ARE FOR ILLUSTRATIVE PURPOSES ONLY! USE ONLY APPROVED ARTWORK FOR PRODUCTION.

DESIGNATION:
48BW52013-R



ELECTRICAL ELEVATION

ELECTRICAL REQUIREMENTS:
LED: (44) GE TETRA MINIMAX *GEMM71-2
7100°K WHITE
POWER SUPPLY: (1) GE *GEP612-60 @ 0.85A
TOTAL LOAD: 0.85A @ 120VAC
CIRCUITS: (1) 20 AMP REQUIRED

NOTE:
ALL ELECTRICAL COMPONENTS AND WIRING
TO BE SECURED A MINIMUM OF 1/2" FROM
BOTTOM OF SIGN



STARBUCKS CORPORATION
2401 UTAH AVENUE SOUTH
SEATTLE, WASHINGTON 98134

These documents represent prototypical design drawings created specifically for use by Starbucks Corporation. Use of this unpublished work for any purpose other than the intended application is strongly discouraged. Disclosure or reproduction of any of the information contained within these documents without the written consent of the owner is strictly prohibited.

SHT.
2
OF
5

BY:
JBL
DATE:
01/02/14

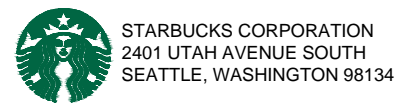
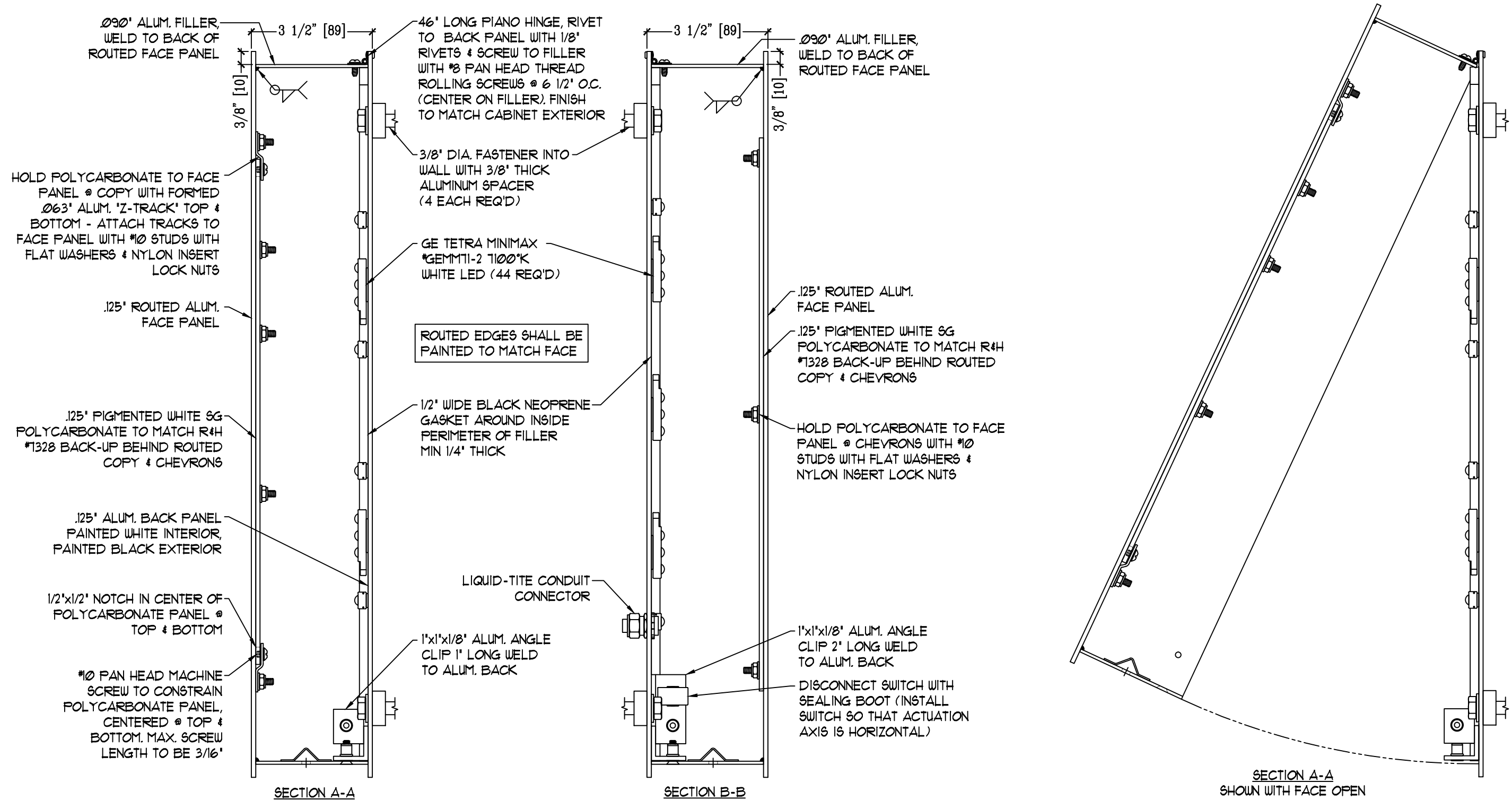
Project No.
13-0131
Drawing No.
B321005

REV.	DATE	DESCRIPTION
1	4/22/15	ADDED VINYL NOTE ON CHEVRON SIDE OF SIGN CORRECTED LOCATION OF DISCONNECT SWITCH IN ELEVATION VIEW
2	9/15/14	REMOVED LED LAYOUT, ADDED DISCONNECT SWITCH CHANGED WIRE ATTACHMENT CHANGED POLYCARBONATE PANEL TO BE NOTCHED TO FLUSH WITH OUTSIDE OF FILLER AT CHEVRON
3	7/10/14	CHANGED PAINT TO VINYL ON ENDS, EXTENDED PLANO HINGE CHANGED WALL BUTTER TO LIQUID-TITE, SPECIFIED SWITCH ORIENTATION

BY:	APPR.
GHK	DSA
TRR	DSA
TRR	DSA

GRAPHICS DEPICTED ARE FOR ILLUSTRATIVE PURPOSES ONLY!
USE ONLY APPROVED ARTWORK FOR PRODUCTION.

DESIGNATION:
48BW52013-R



These documents represent prototypical design drawings created specifically for use by Starbucks Corporation. Use of this unpublished work for any purpose other than the intended application is strongly discouraged. Disclosure or reproduction of any of the information contained within these documents without the written consent of the owner is strictly prohibited.

SHT.
3
OF
5

BY:
JBL
DATE:
01/02/14

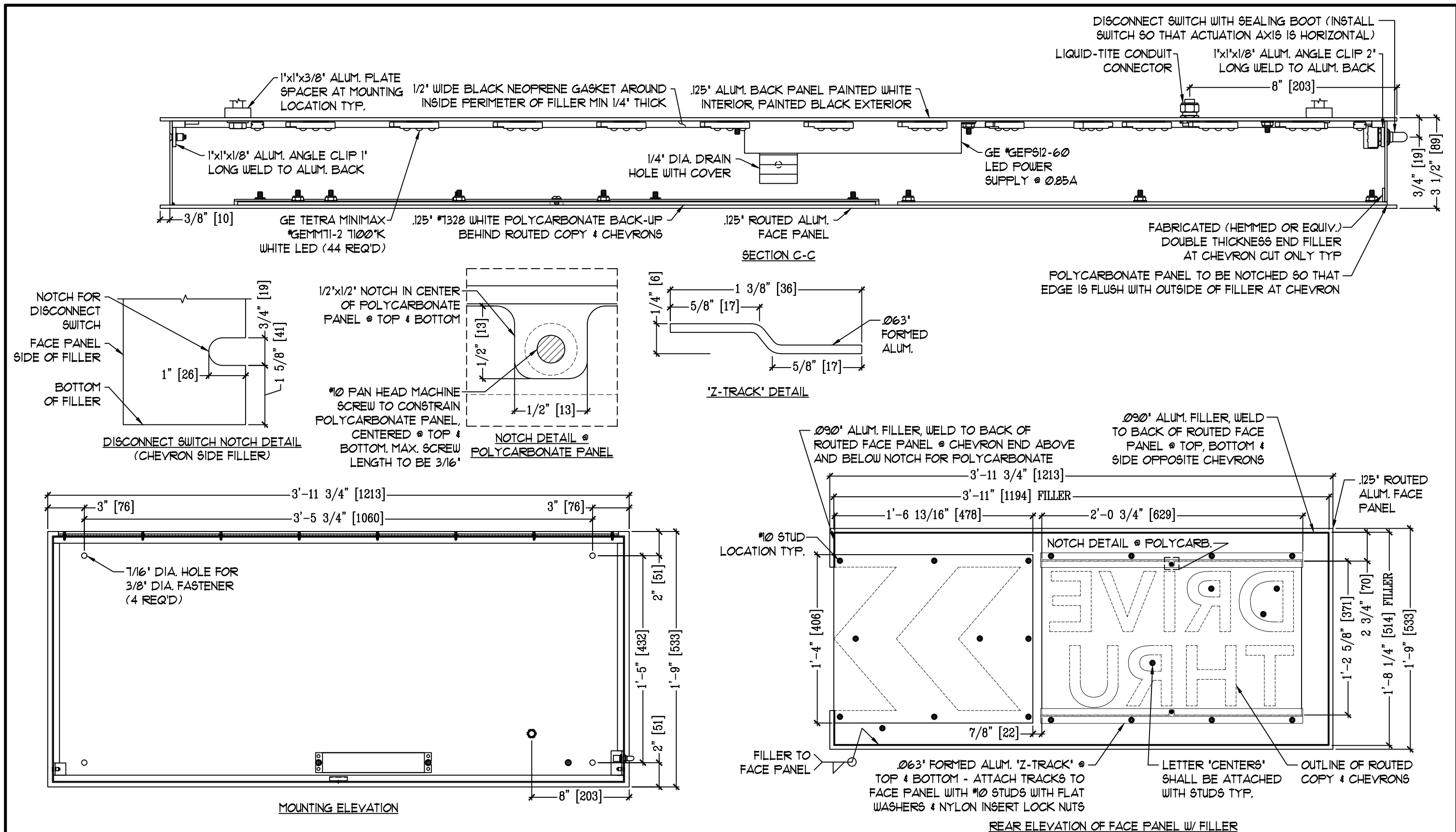
Project No.
13-0131
Drawing No.
B321005

REV.	DATE	DESCRIPTION
1	4/22/15	ADDED VINYL NOTE ON ORIGIN SIDE OF WALL CORRECTED LOCATION OF DISCONNECT SWITCH IN ELEVATION VIEW
2	9/15/14	REVISED LED LAYOUT, LOANED DISCONNECT SWITCH CHANGED WIRE ATTACHMENT CHANGED POLYCARBONATE, PIGMENTED POLYCARBONATE SPEC ADDED LAMINATE TO THE TOP, REFINED NEOPRENE GASKET, GLASS LENS, OF BLACK PANEL, REFINED WHITE VINYL STRIP
3	7/10/14	CHANGED PAINT TO VINYL ON ENDS, EXTENDED PIANO HINGE, CHANGED WALL BUTTER TO LIQUID-TITE, SPECIFIED SWITCH ORIENTATION

BY:	APR:
GHK	DSA
TRR	DSA
TRR	DSA

GRAPHICS DEPICTED ARE FOR ILLUSTRATIVE PURPOSES ONLY! USE ONLY APPROVED ARTWORK FOR PRODUCTION.

DESIGNATION:
48BW52013-R



STARBUCKS CORPORATION
2401 UTAH AVENUE SOUTH
SEATTLE, WASHINGTON 98134

These documents represent prototypical design drawings created specifically for use by Starbucks Corporation. Use of this unpublished work for any purpose other than the intended application is strongly discouraged. Disclosure or reproduction of any of the information contained within these documents without the written consent of the owner is strictly prohibited.

SHT.
4
OF
5

BY:
JBL
DATE:
01/02/14

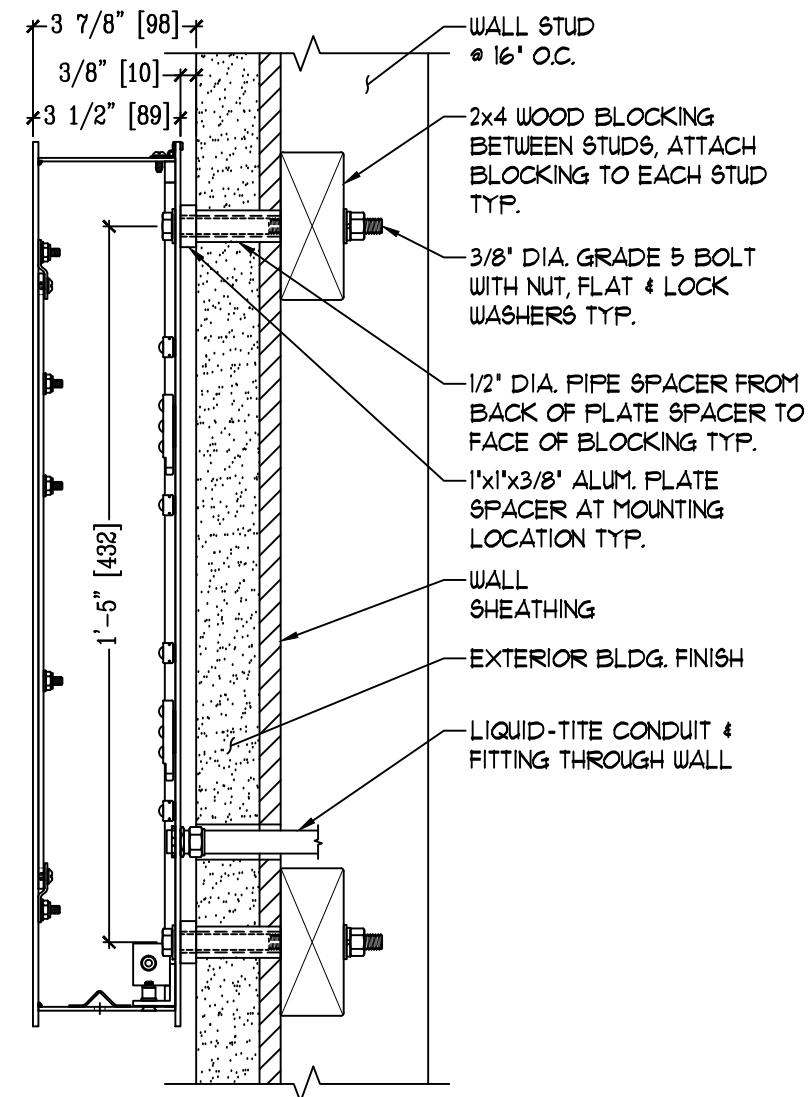
Project No.
13-0131
Drawing No.
B321005

REV.	DATE	DESCRIPTION
1	4/22/15	ADDED VINYL NOTE ON CHEVRON SIDE OF FILLER CORRECTED LOCATION OF DISCONNECT SWITCH IN ELEVATION VIEW
2	9/15/14	ROUTED LED LAYOUT, LAMPED DISCONNECT SWITCH CHANGED FROM ATTACHMENT CHANGED POLYCARBONATE BACK-UP FROM POLYCARBONATE TO ALUM. BACK PANEL, REFINED NEOPRENE GASKET, GLASS SEAL, OF BLACK PANEL, REFINED WHITE VINYL PORTALS
3	7/10/14	CHANGED PAINT TO VINYL ON ENDS, EXTENDED PLANO HINGE, CHANGED WALL BUTTER TO LIQUID-TITE, SPECIFIED SWITCH ORIENTATION

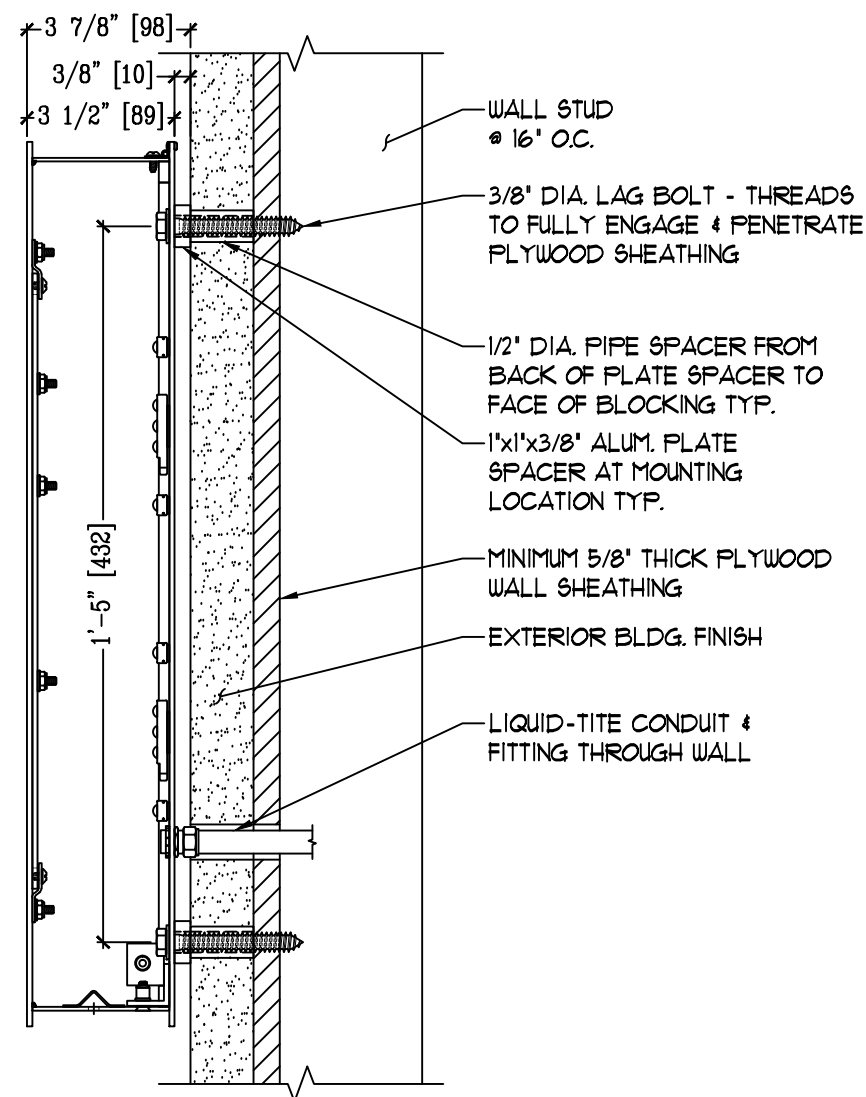
BY:	DATE:	DESCRIPTION:
GHK	DSB	GRAPHICS DEPICTED ARE FOR ILLUSTRATIVE PURPOSES ONLY! USE ONLY APPROVED ARTWORK FOR PRODUCTION.
TRR	DSB	
TRR	DSB	
APR		

GRAPHICS DEPICTED ARE FOR ILLUSTRATIVE PURPOSES ONLY! USE ONLY APPROVED ARTWORK FOR PRODUCTION.

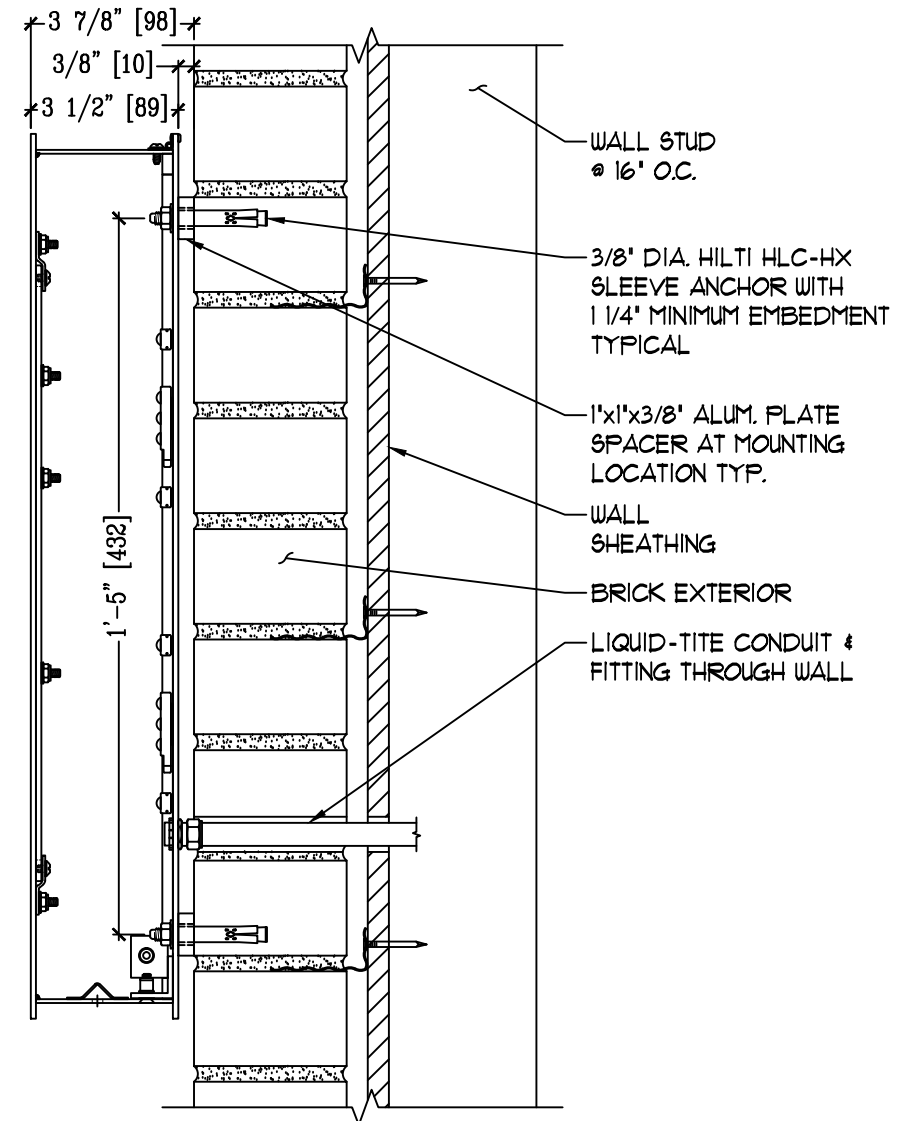
DESIGNATION:
48BW52013-R



FRAMED WALL INSTALLATION DETAIL
(THROUGH BOLT)



FRAMED WALL INSTALLATION DETAIL
(LAG BOLT)



BRICK WALL INSTALLATION DETAIL

HILTI SLEEVE ANCHOR SHALL BE INSTALLED IN STRICT ACCORDANCE WITH THE MANUFACTURER'S SPECIFICATIONS & RECOMMENDATIONS

NOTE:
SIGN SHALL BE HELD 3/8" FROM WALL SURFACE WHEN INSTALLED.
INSTALLATION ON AN IRREGULAR WALL SURFACE MAY CAUSE WARPING OF THE SIGN BACK & SUBSEQUENT LIGHT LEAKS AROUND THE PERIMETER. WHEN INSTALLING ON AN IRREGULAR WALL SURFACE, ADDITIONAL SHIMS MAY BE REQUIRED TO BE USED WITH THE PROVIDED 1"x1"x3/8" SPACER. IF SO, USE 3/8" DIA. FLAT WASHERS TO COMPENSATE FOR ANY WALL IRREGULARITY.



STARBUCKS CORPORATION
2401 UTAH AVENUE SOUTH
SEATTLE, WASHINGTON 98134

These documents represent prototypical design drawings created specifically for use by Starbucks Corporation. Use of this unpublished work for any purpose other than the intended application is strongly discouraged. Disclosure or reproduction of any of the information contained within these documents without the written consent of the owner is strictly prohibited.

SHT.
5
OF
5

BY:
JBL
DATE:
01/02/14

Project No.
13-0131
Drawing No.
B321005

REV.	DATE	DESCRIPTION
1	4/22/15	ADDED VINYL NOTE ON ORIGIN SIDE OF SIGN CORRECTED LOCATION OF DISCONNECT SWITCH IN ELEVATION VIEW
2	9/15/14	REVISED LED LAMP, LAMPED DISCONNECT SWITCH CHANGED FROM ATTACHMENT CHANGED POLYURETHANE FINISHING POLYURETHANE FINISH ADDED LINE BELY THE SIGNAL, REVISED SIGNAL NOTE, SPECIFIC GLASS LENS, OF BLACK FRAME, REVISED BARE VINYL SURFACES
3	7/10/14	CHANGED PAINT TO VINYL ON ENDS, EXTENDED PLANO HINGE, CHANGED WALL BUTTER TO LIQUID-TITE, SPECIFIED SWITCH ORIENTATION

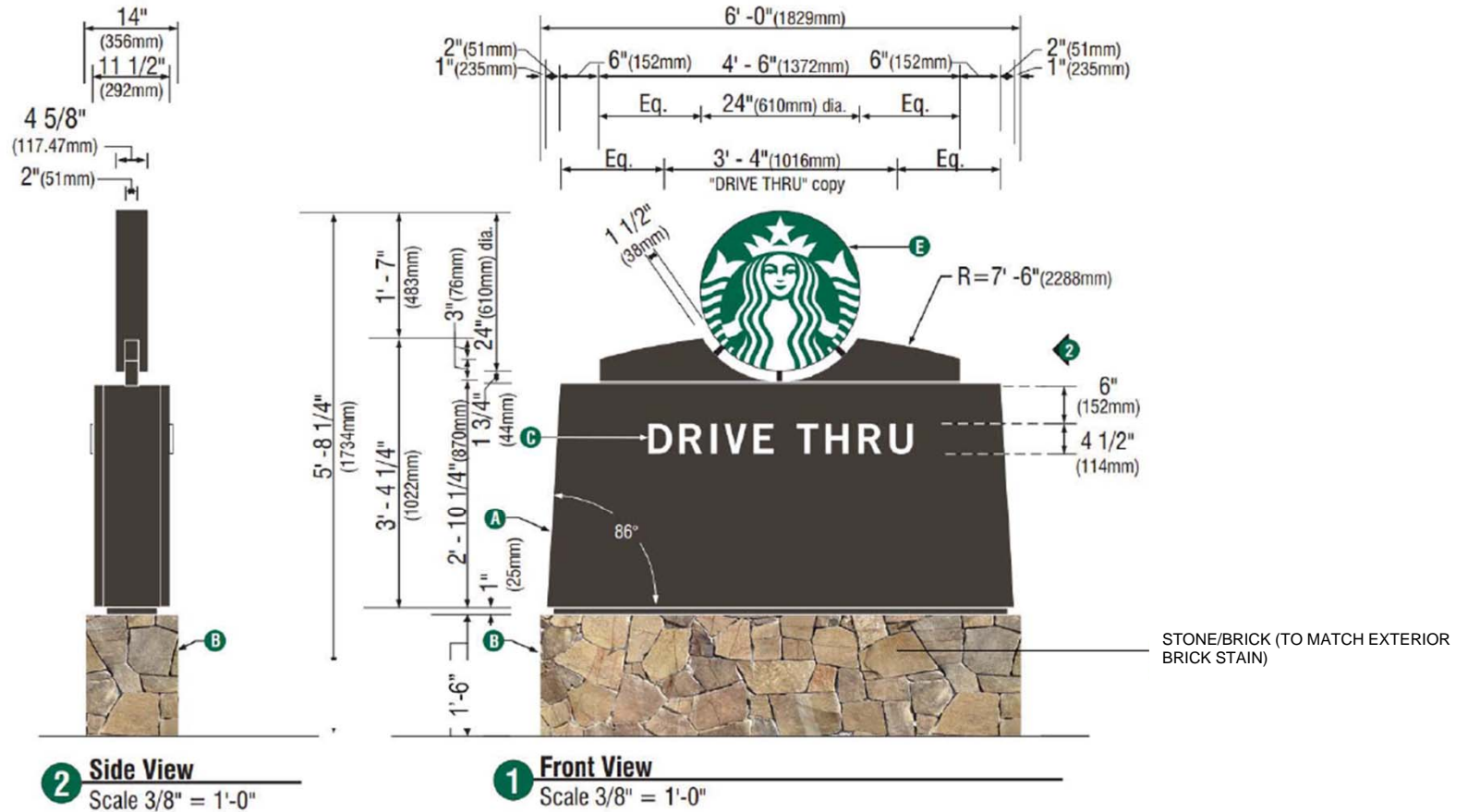
BY: AFR

GRAPHICS DEPICTED ARE FOR ILLUSTRATIVE PURPOSES ONLY! USE ONLY APPROVED ARTWORK FOR PRODUCTION.

DESIGNATION:

48BW52013-R

MONUMENT SIGN



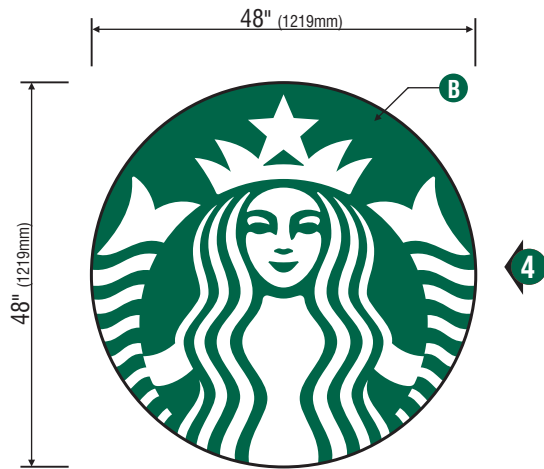
Item Specification

	Item #: 13163	Item Name: Disk 48in S/F Illuminated wall mount EVOLVED
Revision: 02-AUG-2011	Design Contact: Janelle Perreira	Approved by: Tom Ackerman

Item: Sign

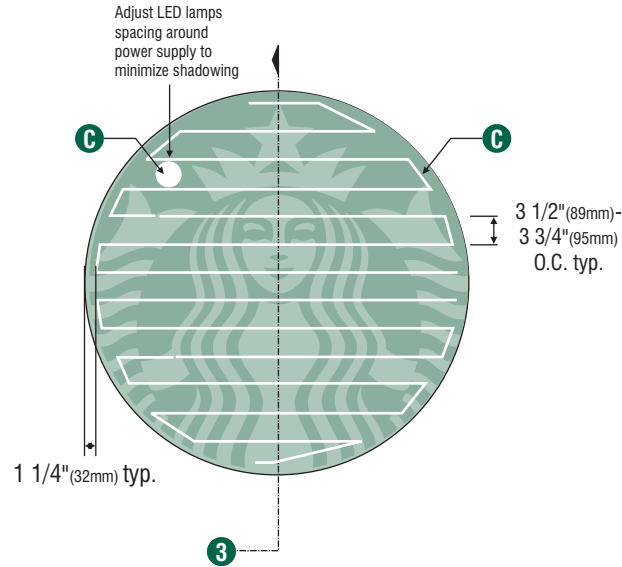
Change Log

Revision	Description of Changes	Change Control #	Approved by:
02-MAR-2011	Original release	N/A	T. Ackerman
20-APR-2011	Added white acrylic model #	N/A	T. Ackerman
02-AUG-2011	Moved Power Supply Location	N/A	T. Ackerman



1 Front View

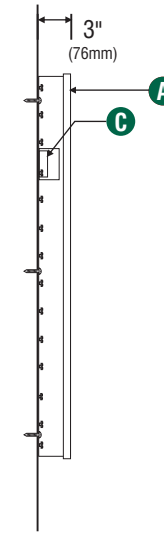
Scale: 1/2" = 1'-0"



2 LED Detail

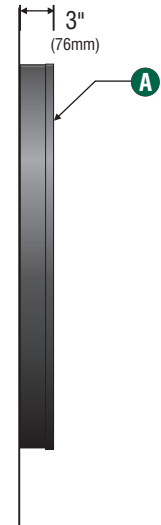
Scale: 1/2" = 1'-0"

LED's Provided By:
Lumificient
White LED's Technology



3 Section View

Scale: 1/2" = 1'-0"



4 Side View

Scale: 1/2" = 1'-0"

SPECIFICATIONS:

- A** 48" (1219mm) Single faced internally illuminated wall mount logo disk. Cabinet to be 3" (76mm) deep, fabricated aluminum sidewalls and back. Paint cabinet black polyurethane. Faces to be 3/16" (5mm) Acrylite 015-2GP. 1" (25mm) black trimcap with square head screws retainer edging.
- B** Graphics of logo to be 1st surface 3M Translucent Scotchcal vinyl- Holly Green #3630-76. Siren to show thru White.
- C** Internally illuminate logo disk with Lumificient™ white LED's installed to back of disk. Power with self-contained Lumificient™ power supply contained with an U.L. enclosure covered in white vinyl film. Fasten to wall with required fasteners.

Sign must be approved by the National Electrical Code, Underwriters Laboratory, CUL, and all applicable local codes. Disconnect switch in primary to be within sight of sign (sign includes power supply enclosure) REF: NEC 110-3[B] 600-2, 600-4. Primary electrical source 1/2" (13mm) conduit minimum) REF: NEC 600-6, 600-21(provided by installer).

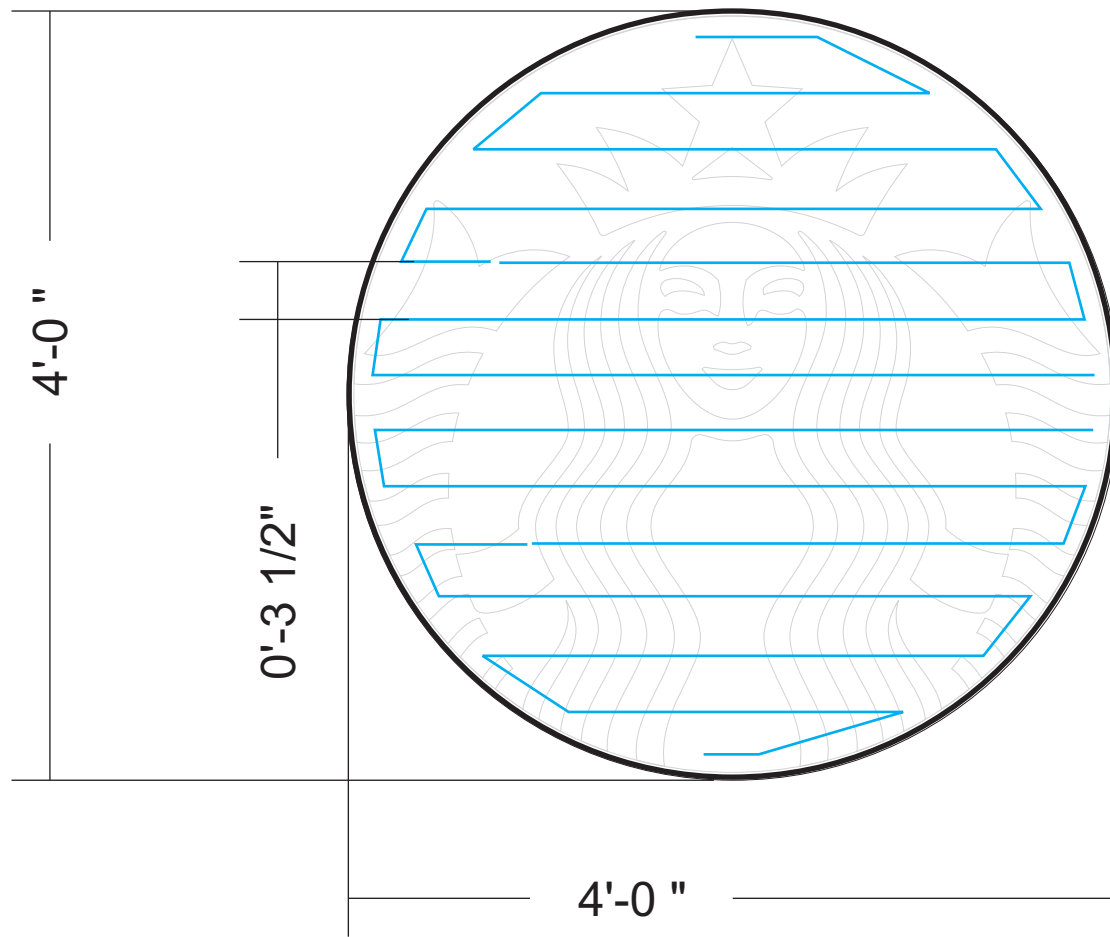


Disk 48in S/F Illuminated wall mount EVOLVED

Size	Sq.Ft.	Sq.M.	Volts
48" (1219mm)	12.56	1.17	120

Design ID #13163





Project 48in Starbucks Coffee Logo Disk	
TAG 13163 - 48in (1219 mm)	
Location / Store# XX	
Date 03/23/2011	2/ 2 Sheet
Scale 1:12	

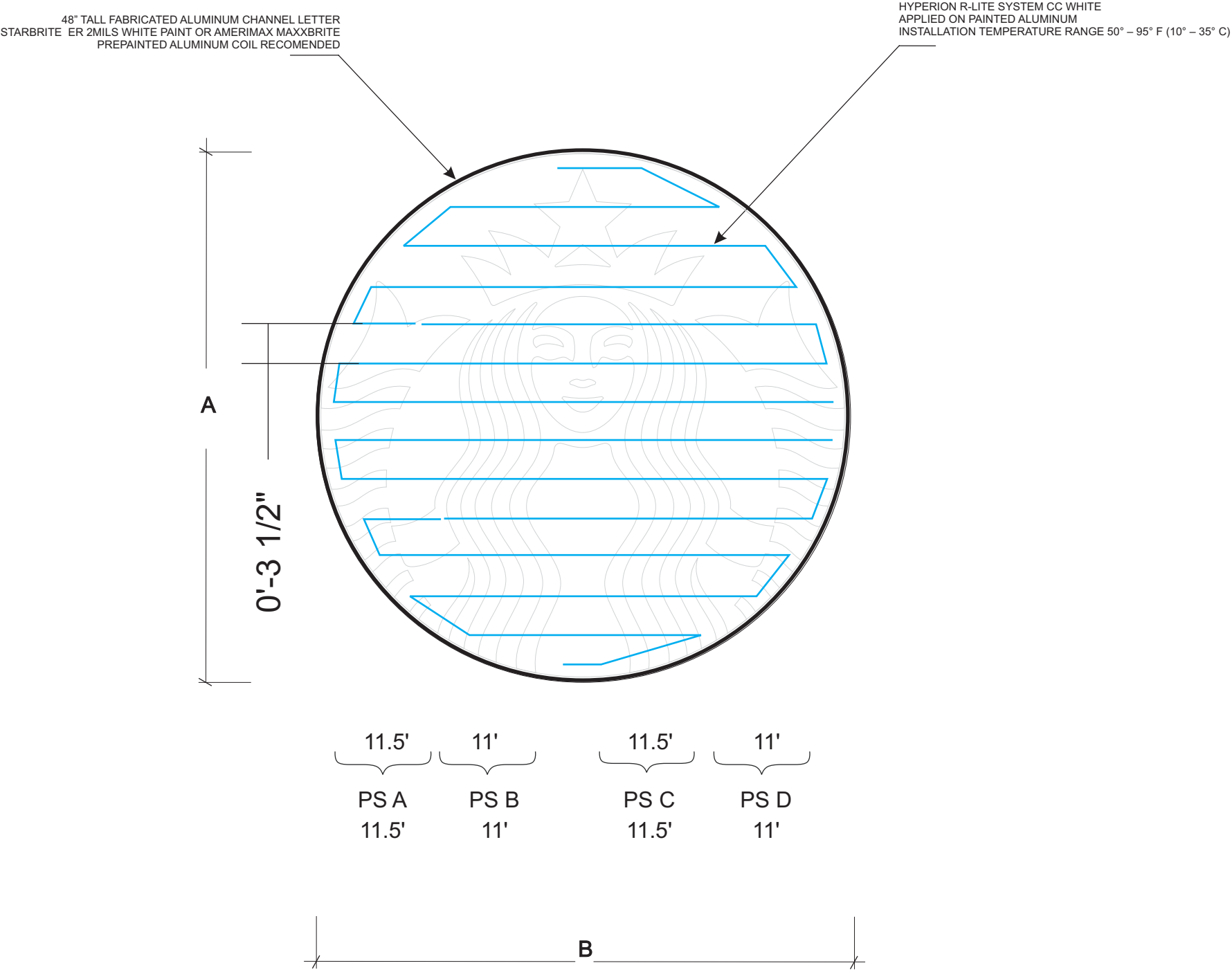
LUMificient™
A Nexus Lighting Company

Lumificient
8752 Monticello Lane N.
Maple Grove, MN 55369
Phone: (763) 424 3702
Fax: (763) 390 3135

Designed By: LeeAnn

ID 13163

NOTE: The Hyperion R-Lite™ strip is sold in 12.5ft & 25ft strips.
direct illumination/face lit/single face wall mount
self - contained power supply



NOTE: INDIVIDUAL FOOTAGE ARE ESTIMATES. ACTUAL LENGTHS MAY VARY.
DO NOT PRECUT STRIPS. ALWAYS WORK FROM the R-Lite REEL to avoid shortages
and unnecessary use of jumpers.

IMPORTANT!Required for ALL FIELD RETROFITS:

- 1.) Thoroughly Clean surface area with non-oil based solvent (409, alcohol or heptan).
- 2.) To ensure adhesion of LED strip to channel letter / cabinet place a support clamp across the LED strip every 4 inches. It is required that you utilize support clamps and / or use silicone adhesive across the LED strip every 4 inches. See page 1 of installation manual for detailed retrofit instructions.

INSTALLATION NOTE: PLEASE READ INSTALL MANUAL BEFORE INSTALLATION.
IF YOU HAVE ANY QUESTIONS, PLEASE CONTACT YOUR SALES REPRESENTATIVE OR
OUR CUSTOMER SUPPORT TEAM. 877-383-4032

Layouts/quotes/estimates are based upon Lumificient standards for typical usage. We utilize information that is provided to us, apply our standards, and provide you with layouts/quotes/estimates for the materials typically required to complete the project. Guidelines do not take into account individual preferences or end customer preferences. FINAL MATERIAL REQUIREMENTS ARE THE RESPONSIBILITY OF THE SIGN MANUFACTURER.

NOTE: It is recommended to test one or more letters before installation
for acceptable color and illumination.

IMPORTANT: When sending files for quotes all files must be in vector file format.
Raster images, photos or bitmaps are not recommended due to low resolution and
non-scalability which can have an affect on product selection, quantities, application
and illumination. Prices and quantities are estimates which are subject to change
based on raster images,photos or bitmap files.

48"

General Info		
	Unit of Measure feet/inches	Unit of Measure meter/millimeter
LETTER HEIGHT (A):	48"	1219mm
SIGN LENGTH (B):	48"	1219mm
LETTER DEPTH:	3"- 6"	76mm-152mm
MAX LETTER STROKE:	0.00"	0.0mm
MIN LETTER STROKE:	0.00"	0.00mm
Power Requirements		
INPUT VOLTS:		120V
INPUT AMPERES:		0.8 max
TOTAL WATTAGE:		45 Watts
File	HRL-W-48-Starbucks logo disk ID 13163.cdr	
	Quote# 13207	
No.	Revision / Issue	Date

Material List		
	Unit of Measure feet	Unit of Measure meter
TOTAL LINEAR FOOTAGE:	45 ft	13.71m
HRLSB-6500 White	45 ft	13.71m
HRLSB-HC Power Connector:	4	
HRLSB-JC JUMPER:		
HRLSB-24 Power Unit:	2	
HRLSB-24-BOGO	2	
HRLSB-96 Power Unit:		
HRLSB-277 Power Unit:		
Added Material List for Retrofits		
HRLSB-SC	135	

Customer Name and Address	
Starbucks Coffee Company 2401 Utah Avenue South 8th floor Seattle, WA 98134	
Customer Contact	Katie O'Donnell

Project	48in Starbucks Coffee Logo Disk	
TAG	13163 - 48in (1219 mm)	
Location / Store#	XX	
Date	03/23/2011	1 / 2 Sheet
Scale	1:12	



A Nexxus Lighting Company

Lumificient
8752 Monticello Lane N.
Maple Grove, MN 55369
Phone: (763) 424 3702
Fax: (763) 390 3135

Designed By: LeeAnn