

VIRGINIA TIRE & AUTO

PROPOSED RENDERINGS | VIENNA, VA | 3-30-18



VIRGINIA TIRE & AUTO

PROPOSED RENDERINGS | VIENNA, VA | 3-30-18



PROPOSED:



EXISTING:



VIRGINIA TIRE & AUTO

NEIGHBORHOOD STUDY | VIENNA, VA | 3-30-18

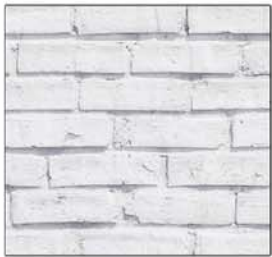
IMAGES COURTESY OF GOOGLE, LLC



VIRGINIA TIRE & AUTO

PROPOSED ELEVATIONS/MATERIALS | VIENNA, VA | 3-30-18

BR - 1



EXISTING BRICK PTD.
WITH SILICOTE PAINT,
COLOR: SB BASE
0047B WHITE

BR - 2



NEW THIN-BRICK TO
MATCH EXISTING BRICK,
PTD. WITH SILICOTE
PAINT, COLOR: SB BASE
0047B WHITE

MET - 1



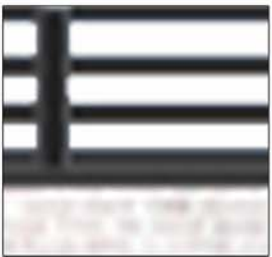
ALUMINUM; COLOR:
VIRGINIA TIRE &
AUTO GREEN

MET - 2



ALUMINUM;
COLOR: BLACK.

MET - 3

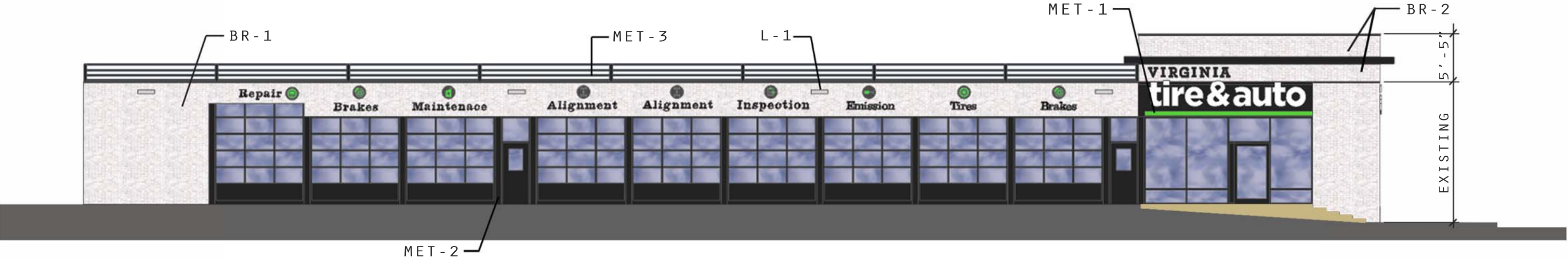
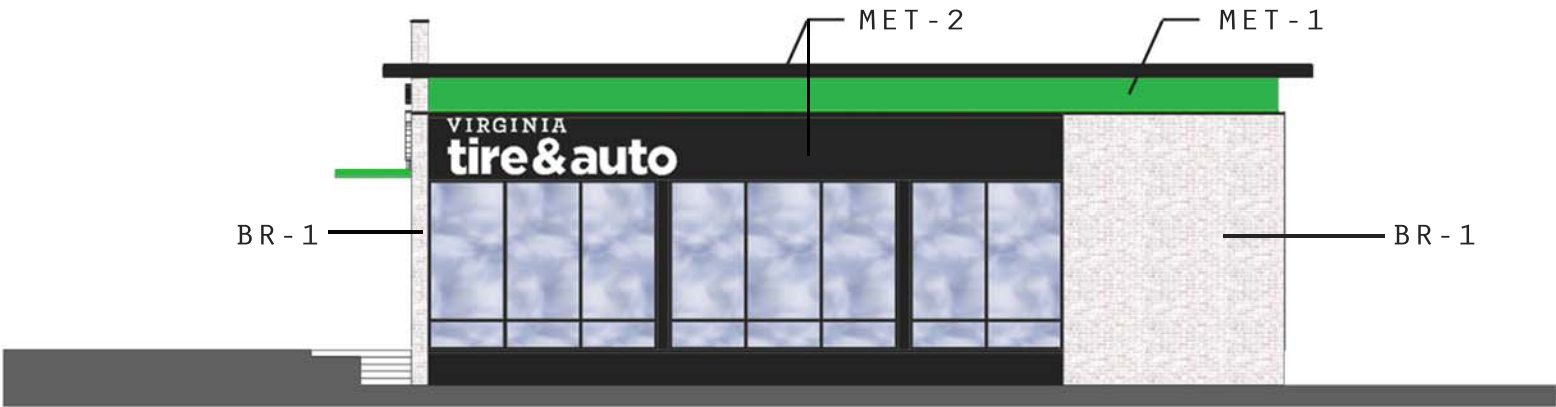


EQUIPMENT SCREEN: TBD;
COLOR: PRE-FINISHED OR
POWDER-COATED BLACK

L - 1



LEOTEK ES-2 LIGHT,
REF: SHEET 5



VIRGINIA TIRE & AUTO
EXTERIOR LIGHT SPEC | VIENNA, VA | 3-30-18



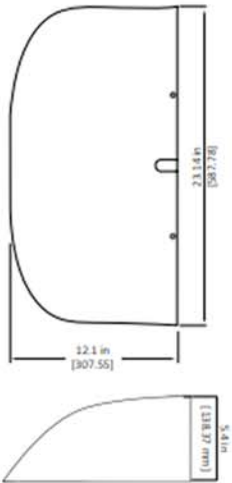
Eseta™ LED Wall Sconce
ES2

Luminaire Data

Weight 15 lbs [6.8 kg]
20.1 lbs [9.1kg] with EM option



Project _____
Type _____
Catalog No. _____



Ordering Information
Sample Catalog No. ES2 88H MV NW W BK 450 EM

Product	No. & Type of LEDs	Voltage	Color Temperature ¹	Distribution	Finish ²	Drive Current ³	Options
ES2	88H 130H	MV 120-277V HV 347-480V	WW 3000K NW 4000K CW 5000K	W Wide FT Forward Throw	BK Black DB Dark Bronze GY Gray WH White	450 450mA	PC Button Type Photo Control ANSI 7-Wire Photocontrol Receptacle MSL3 ³ Motion Sensor, L3 Lens MSL7 ³ Motion Sensor, L7 Lens EM ⁴ Emergency Battery System FSIR100 Configuration Tool

Notes:
1 Consult factory for other color temperatures.
2 Consult factory for non-standard finish options.
3 Motion Sensor default setting dims luminaire to 50% when no motion is detected for 5 minutes. Field adjustable settings available using FSIR100 option.
4 Emergency Battery System available with MV only.



© 2017 Leotek Electronics USA
ES-2 Spec Sheet_092517. Specifications subject to change without notice.



Eseta™ LED Wall Sconce
ES2

Luminaire Specifications

Housing
Die cast aluminum housing with back mounting plate and outdoor rated cable. Back mounting plate includes novel hanging features to allow one-person installation. Knockouts on the top and bottom of the housing allow conduit entry. Electrical components are accessed behind gasketed optical cover.

Light Emitting Diodes
Hi-flux/Hi-power white LEDs are tested in accordance with IES LM-80 testing procedures. Warm White (3000K), Neutral White (4000K) and Cool White (5000K) with minimum 70 CRI are standard. LEDs are 100% mercury and lead free.

Optical Systems
The OMNILENS™ system creates a low brightness source to reduce glare with precise Wide or Forward Throw distributions. Lens cover is UV stabilized, vandal-resistant polycarbonate. Luminaire produces 0% total lumens above 90° (BUG Rating, U=0).

Electrical
Power supply features a minimum power factor of .90 and <20% Total Harmonic Distortion (THD). EMC meets or exceeds FCC CFR Part 15. Transient voltage complies with ANSI C62.41 Cat. A. Integral surge protector is tested per ANSI/IEEE C62.41.2 definitions for standard and optional waveforms for Location Category C High.

Finish
Housing receives a fade and abrasion resistant epoxy polyester powder coat. Finish tested to withstand 5000 hours in salt spray exposure per ASTM B117. Finish tested 5000 hours in UV exposure per ASTM G154 and meets ASTM D523 gloss retention.

Listings/Ratings/Labels
Luminaires are UL listed for use in wet locations and emergency lighting in the United States and Canada. Ambient operating temperature is -40°C to 40°C with no accessories installed. Entire fixture maintains an IP66 and IK10 rating. Assembled in the United States.

Performance Data
All data nominal, consult factory for IES files or LM-79 reports.

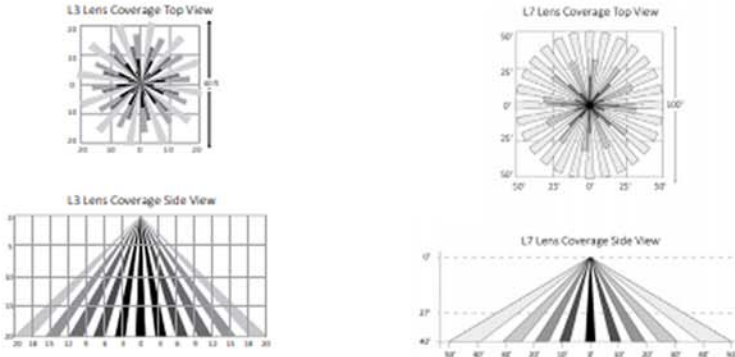
CCT	Two Distributions		Wide Distribution			Forward Throw Distribution		
	No. of LEDs & Type	Drive Current (mA)	System Wattage (W)	Delivered Lumens (lm)	Efficacy (lm/W)	System Wattage (W)	Delivered Lumens (lm)	Efficacy (lm/W)
3000K	88H	450	128.8	13285	103.1	129.7	13491	104.0
	130H		185.8	18973	102.1	182.4	18690	102.5
4000K	88H		130.1	14032	107.9	125.6	14254	113.5
	130H		185.3	19562	105.6	183.9	19625	106.7
5000K	88H		129.0	13981	108.4	127.8	13943	109.1
	130H		184.2	19542	106.1	181.7	19150	105.4

© 2017 Leotek Electronics USA
ES-2 Spec Sheet_092517. Specifications subject to change without notice.



Eseta™ LED Wall Sconce
ES2

Motion Sensor (Optional) Data



Motion Sensor (Optional) Specifications

Description
Digital passive infrared luminaire integrated outdoor occupancy sensor provides high/low/off control based on motion. Initial setup and subsequent sensor adjustments are made using a handheld configuration tool.

Operation
Standard factory setting will dim the luminaire to 50% until motion is sensed and then it will power to 100%. When motion is not detected for five minutes, the luminaire will dim back to 50%. Ramp up and fade down times are adjustable, but initially set to NONE.

Emergency Battery System (Optional) Specifications

Description
Emergency battery system option provides a nominal 2300 lumens for a minimum of 90 minutes and can be specified with motion sensor option. Test switch and charging indicator light are visible and accessible on the optical cover.

Temperature Rating
Ambient operating temperature is -20C to +60C.

The percent dimming and time durations may be field adjusted as required using FSIR100 option. FSIR user guide available at: www.wattstopper.com.

Optical System
Multi-cell, multi-tier Fresnel lens with a 360 degree view detects unobstructed motion. L3 lens is designed for a mounting height up to 20 feet and detects motion within one mounting height. L7 lens is designed for a mounting height up to 40 feet and detects motion within 1.25 mounting height.

Listings/Ratings/Labels
Emergency LED driver and batteries are UL recognized and CSA certified. Emergency illumination time exceeds the National Electrical Code (NEC), Life Safety Code (NFPA-LSC), National Building Code of Canada (NBC), National Fire Code of Canada (NFC) and UL 90-minute requirements.

Finish
Sensor exterior ring and lens are white polycarbonate, UV and impact resistant.

Listings/Ratings
Sensor is TUV, UL and cUL listed, IP66 rated and CE compliant.

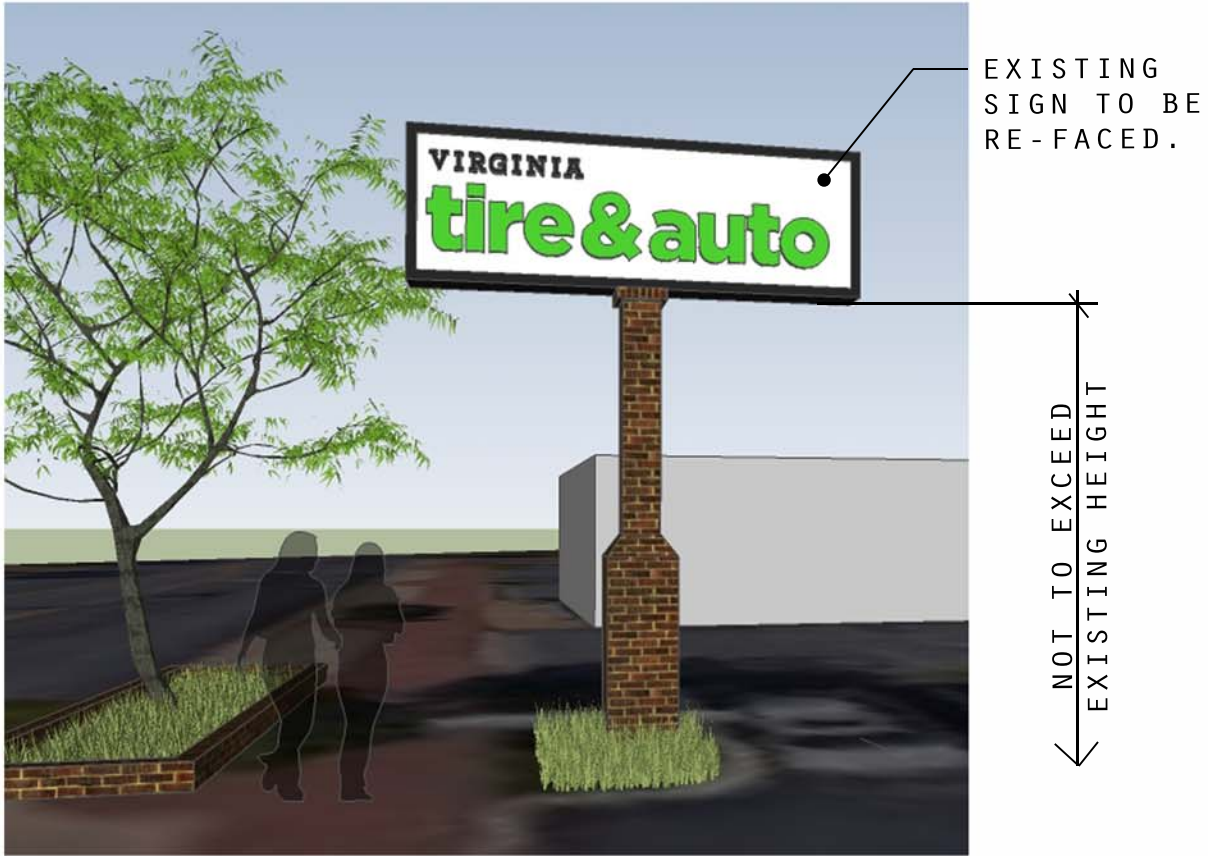
Warranty
5-year limited warranty on luminaires and components with a motion sensor.

Warranty
3-year limited warranty on Emergency Battery System.

© 2017 Leotek Electronics USA
ES-2 Spec Sheet_092517. Specifications subject to change without notice.



VIRGINIA TIRE & AUTO
PYLON SIGN AND PROPOSED LANDSCAPING | VIENNA, VA | 3-30-18



*NATIVE TO VIRGINIA



KARL FOERSTER GRASS



YELLOW WILD INDIGO*



CRAPE MYRTLE BUSH



BLUE WILD INDIGO*