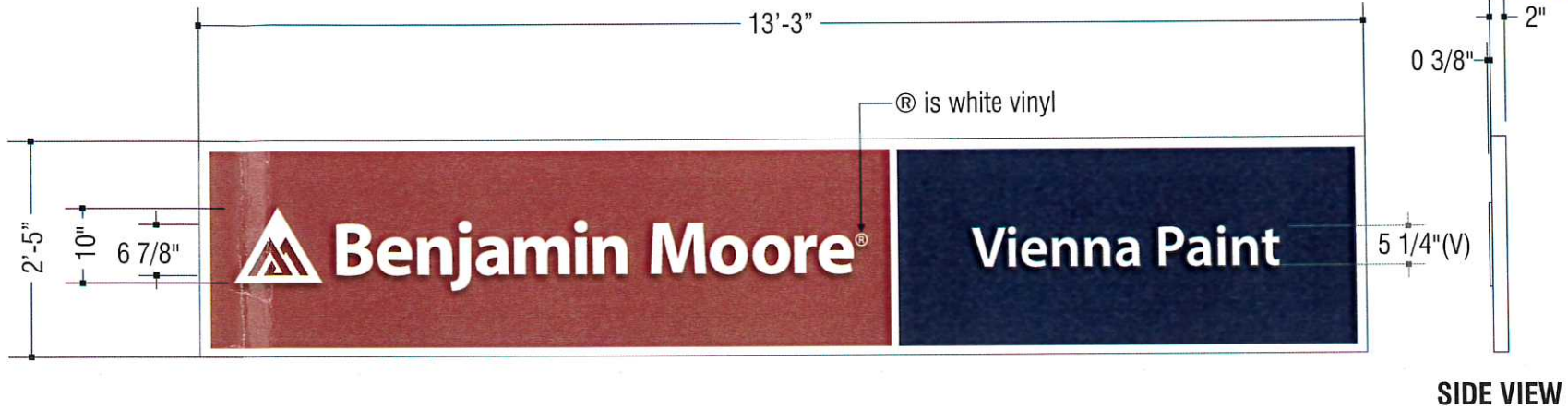
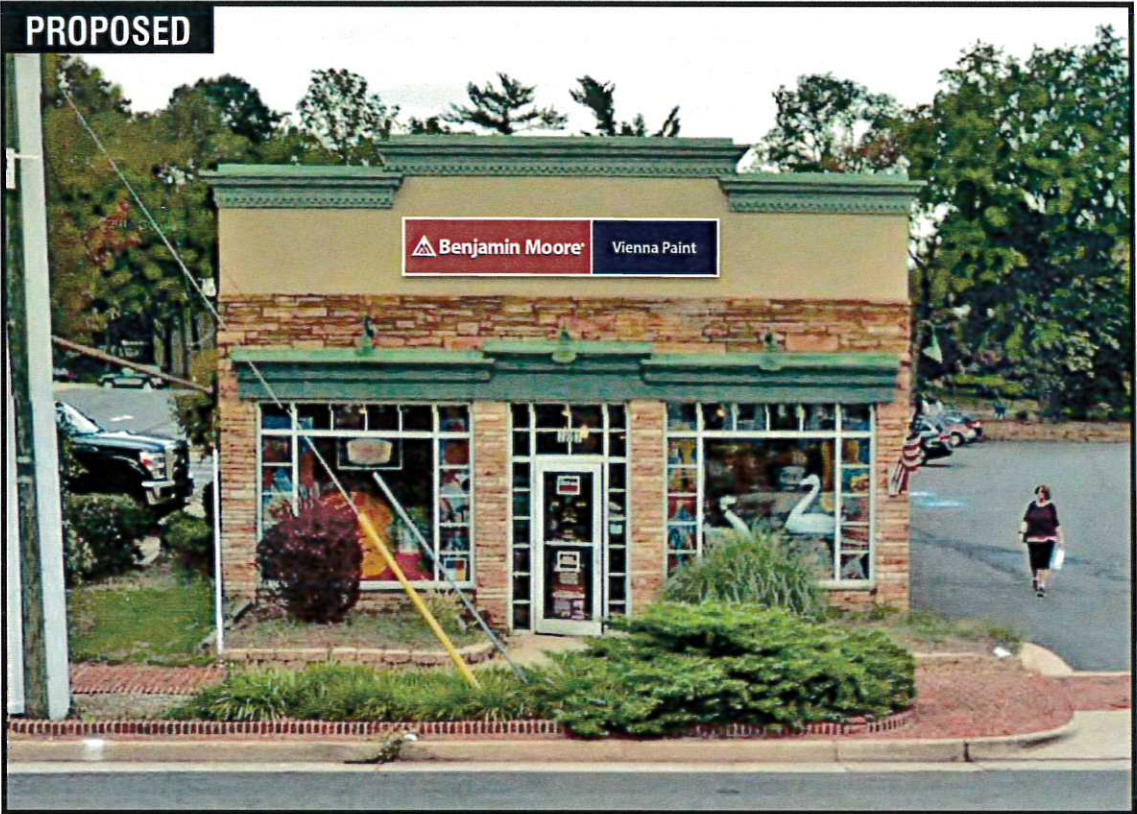


Town of Vienna
Office of Planning & Zoning

SEP 12 2018

RECEIVED

PROPOSED



EXISTING



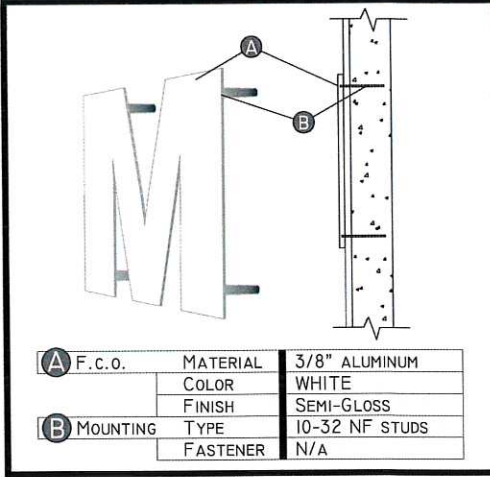
GENERAL SPECIFICATIONS 1/2" = 1'-0"

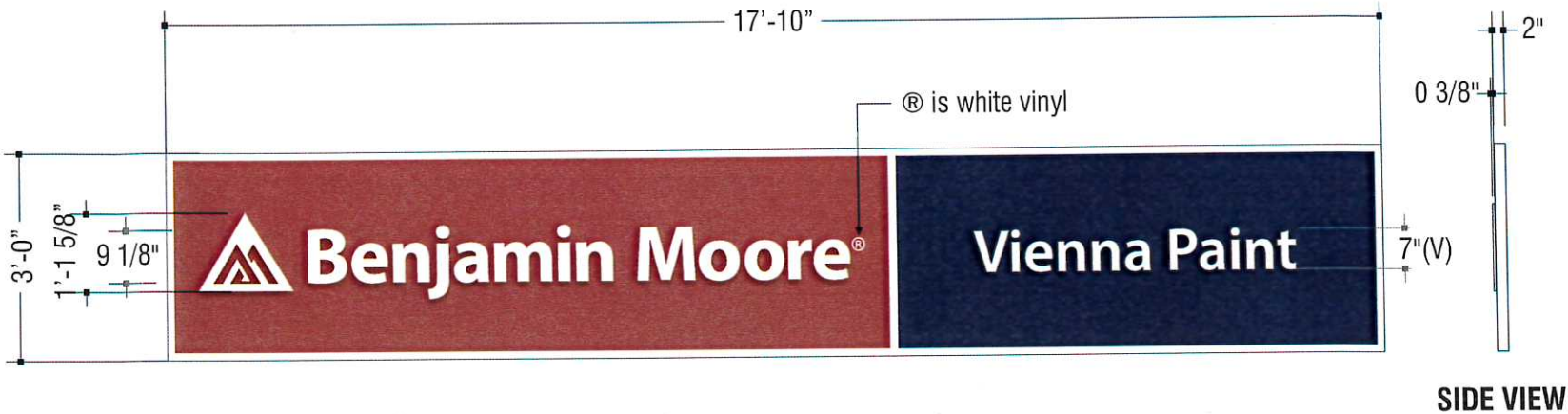
White flanged aluminum panel w/applied flat cut vinyl to first surface. Logo and copy to be 3/8" Flat Cut Out Aluminum painted white, flush mounted to face.

COLOR SPECIFICATIONS

- Vinyl:
- ☒ 3M #3730-53L Cardinal RED (matches PMS 200C)
 - ☒ BLUE 3M #3730-137L European BLUE (no PMS match)
 - ☐ WHITE - (®)
- Paint:
- ☐ WHITE (panel, logo & letters)

ALUMINUM FLAT CUT OUT LETTERS





SIDE VIEW



GENERAL SPECIFICATIONS

3/8" = 1'-0"

White flanged aluminum panel w/applied flat cut vinyl to first surface. Logo and copy to be 3/8" Flat Cut Out Aluminum painted white, flush mounted to face.

COLOR SPECIFICATIONS

Vinyl:

 3M #3730-53L Cardinal RED (matches PMS 200C)  BLUE 3M #3730-137L European BLUE (no PMS match)

 WHITE - (®)

Paint:

 WHITE (panel, logo & letters)

ALUMINUM FLAT CUT OUT LETTERS

