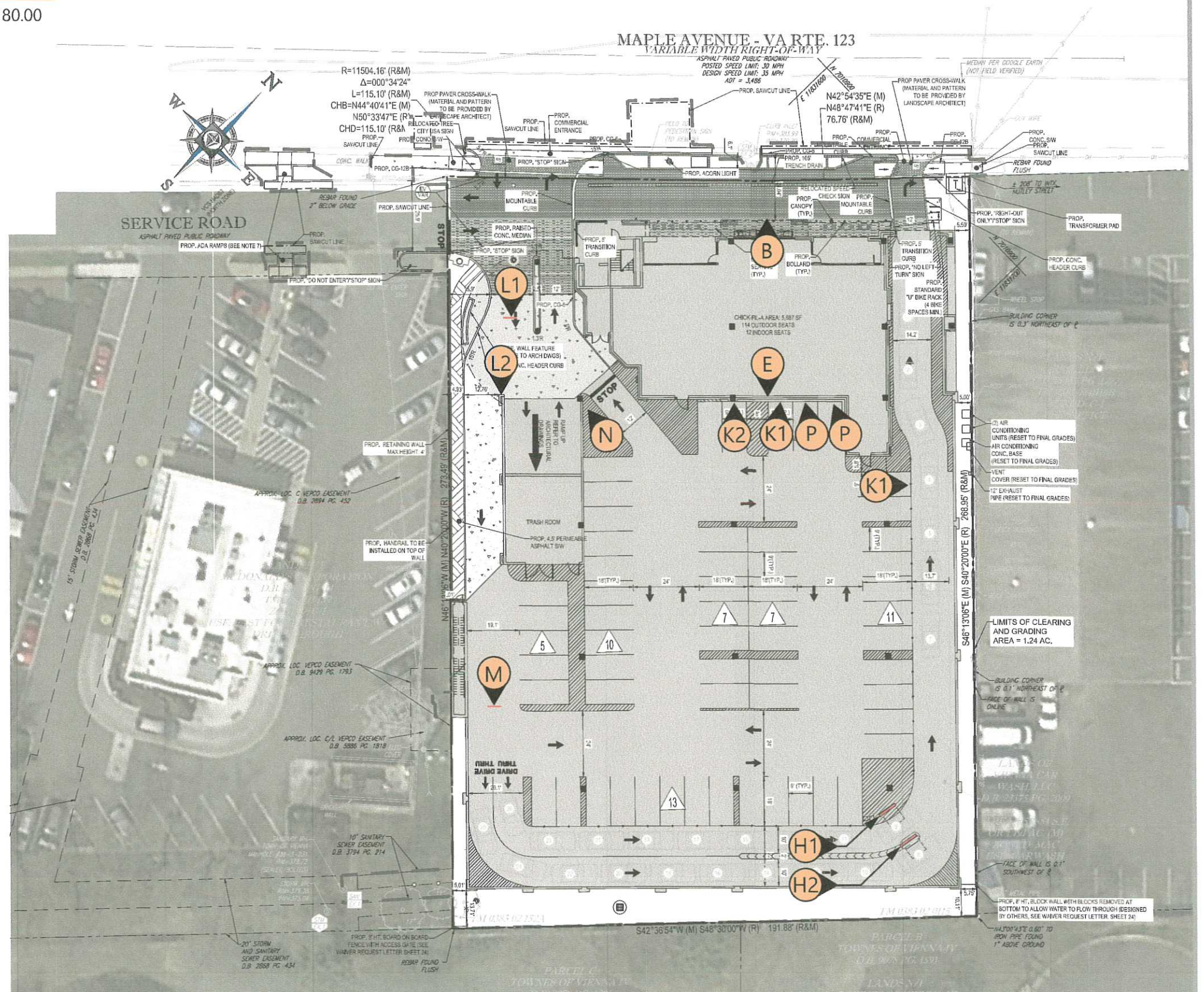


Item	Description	Qty	Sign Area	Allowed
B	Wall Sign - Script	1	180.00	180.00
E	Parking Deck Wall Murals	1		
H1	Menu Board (Lane 1) in parking deck	1		
H2	Menu Board (Lane 2) in parking deck	1		
Aggregate Totals				

Item	Description	Qty
K1	DOT - Handicapped Parking (wall)	2
K2	DOT - Handicapped Parking (Van)(w	1
L1	DOT - Directional Panel (overhead)	1
L2	DOT - Directional Panel (wall)	1
M	DOT - Directional Panel (overhead)	1
N	DOT - Caution Traffic Approaching	1
P	DOT - Catering & Carry Out (wall)	2
	Vinyl Door Graphics	1



5198 North Lake Drive
Lake City, GA 30260
404.361.3800
www.claytonsigns.com

SITE PLAN

DRAWING FILE - CFA - VIENNA, VA SIGNAGE.CDR

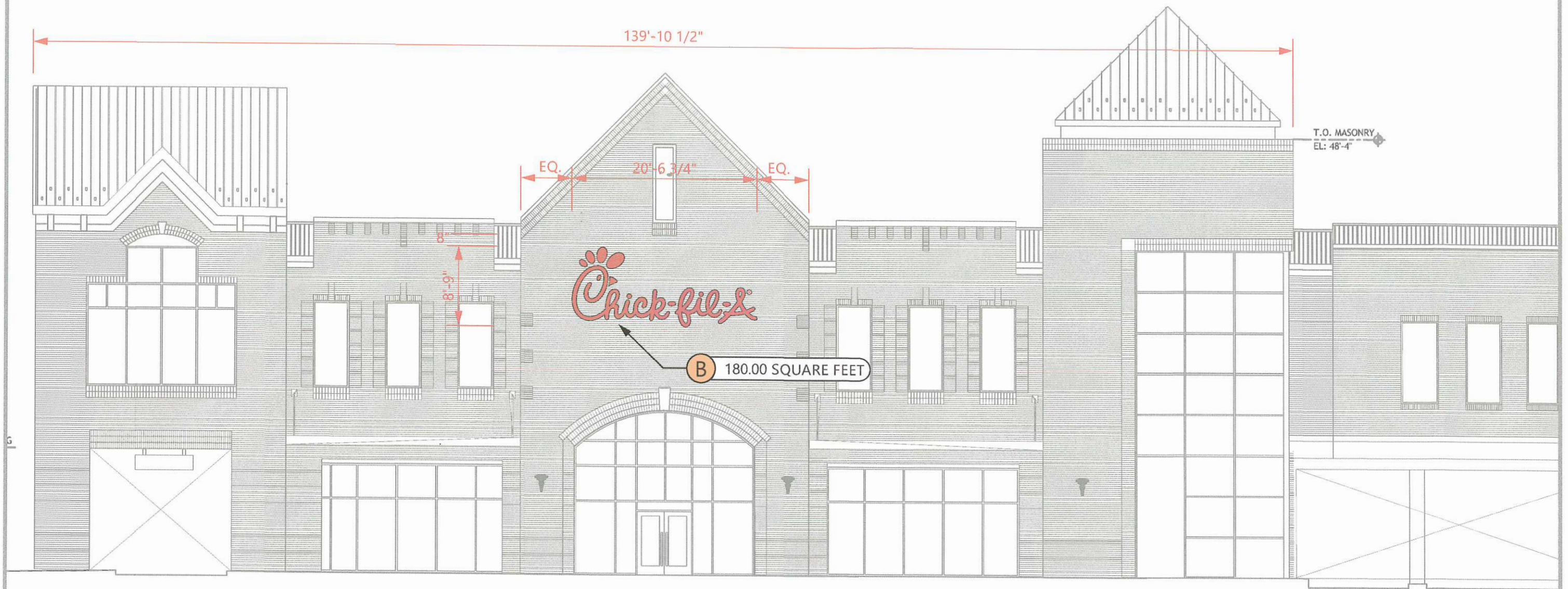
ALL ELECTRICAL
SIGNS ARE
120 VOLTS
UNLESS
OTHERWISE INDICATED

DRAWN BY Ben Holliday
ACCOUNT REP. Ben Holliday
DRAWING DATE June 16, 2016
REVISION DATE September 11, 2018

STORE NUMBER	STORE ADDRESS
L03582	Chick-fil-A at Vienna, VA Maple Avenue, NW Vienna, VA

THIS DRAWING IS AN ORIGINAL, UNPUBLISHED DESIGN CREATED BY CLAYTON SIGNS, INC. IT IS NOT TO BE REPRODUCED, CHANGED, OR EXHIBITED TO ANYONE OUTSIDE OF YOUR COMPANY IN WHOLE OR IN PART WITHOUT WRITTEN PERMISSION FROM THE OWNER OF CLAYTON SIGNS, INC. ANY SUCH ACTIONS MAY BE SUBJECT TO LEGAL ACTION IN A COURT OF LAW
©2018 ALL RIGHTS RESERVED

SITE
PLAN



ELEVATION

SCALE - 3/32" = 1'- 0"



5198 North Lake Drive
Lake City, GA 30260
404.361.3800
www.claytonsigns.com

ELEVATIONS

DRAWING FILE - CFA - VIENNA, VA SIGNAGE CDR

ALL ELECTRICAL
SIGNS ARE
120 VOLTS
UNLESS
OTHERWISE INDICATED

DRAWN BY Ben Holliday
ACCOUNT REP. Ben Holliday
DRAWING DATE June 16, 2016
REVISION DATE September 11, 2018

STORE NUMBER	STORE ADDRESS
L03582	Chick-fil-A at Vienna, VA Maple Avenue, NW Vienna, VA

THIS DRAWING IS AN ORIGINAL, UNPUBLISHED DESIGN CREATED BY CLAYTON SIGNS, INC. IT IS NOT TO BE REPRODUCED, CHANGED, OR EXHIBITED TO ANYONE OUTSIDE OF YOUR COMPANY IN WHOLE OR IN PART WITHOUT WRITTEN PERMISSION FROM THE OWNER OF CLAYTON SIGNS, INC.. ANY SUCH ACTIONS MAY BE SUBJECT TO LEGAL ACTION IN A COURT OF LAW.
© 2018 ALL RIGHTS RESERVED

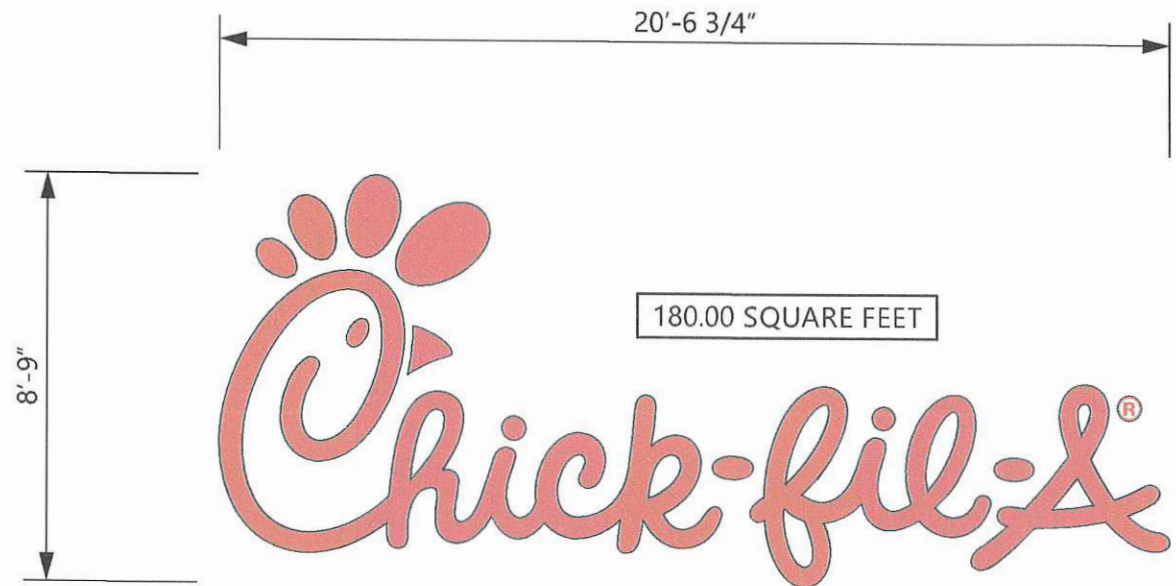
BUILDING
ELEVATIONS

SPECIFICATIONS

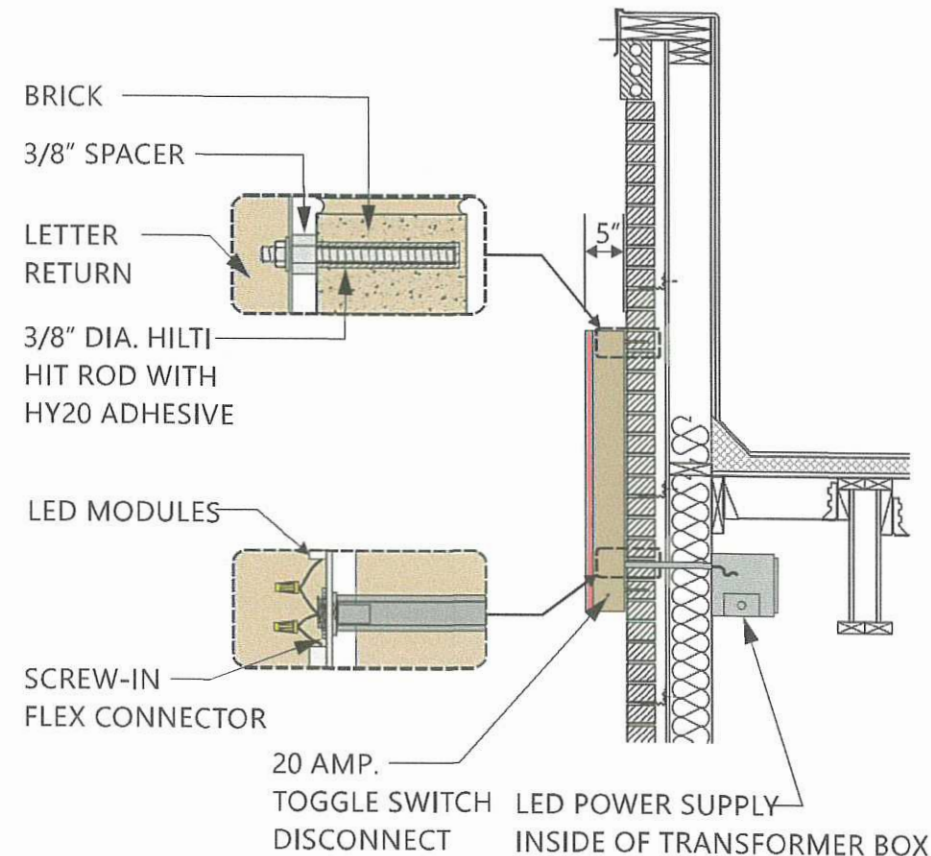
CHICK-FIL-A SCRIPT LETTERS
LETTERS ARE LED-ILLUMINATED
CHANNEL LETTERS MOUNTED
ON ALUMINUM SURFACE OF BUILDING
WITH TRANSFORMERS REMOTELY
LOCATED BEHIND THE WALL IN
UL APPROVED TRANSFORMER BOXES.
FACES ARE 3/16" ACRYLIC
RETURNS ARE .063 ALUMINUM
BACKS ARE .080 ALUMINUM
ALL RETURNS ARE ARC-WELDED TO
LETTER BACKS

CHANNEL LETTER FACES
2793 RED ACRYLIC
TRIMCAP RETAINER-
1" RED JEWELITE TRIMCAP



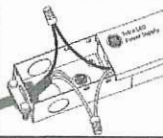
ALUMINUM RETURNS
PAINTED TO MATCH
TAYLOR CLAY PRODUCTS
301-W WHITE WIRE-CUT BRICK



ELEVATION
SCALE - 1/4" = 1'- 0"



CROSS-SECTION
SCALE - 1/2" = 1'- 0"

 	CHANNEL LETTERS (RED ILLUMINATION)		WET LOCATION
	LED'S JTSLS016R-0.4 RED LED POWER SUPPLY BL-120-12-60 POWER SUPPLY		CONNECT THE AC LINE TO THE BLACK (LINE) AND WHITE (NEUTRAL) INPUT WIRES OF THE POWER SUPPLY USING 18-14 AWG TWIST ON WIRE CONNECTORS. GROUND POWER SUPPLY GREEN WIRE TO GROUNDING SCREW. REPLACE JUNCTION BOX COVER.
THIS SIGN IS INTENDED TO BE INSTALLED IN ACCORDANCE WITH REQUIREMENTS OF ARTICLE 600 OF THE NATIONAL ELECTRICAL CODE AND/OR APPLICABLE LOCAL CODES. THIS INCLUDES PROPER GROUNDING & BONDING OF THE SIGN.			



5198 North Lake Drive
Lake City, GA 30260
404.361.3800
www.claytonsigns.com

LED-ILLUMINATED
CHANNEL LETTERS

DRAWING FILE - CFA - VIENNA, VA SIGNAGE.CDR

ALL ELECTRICAL
SIGNS ARE
120 VOLTS
UNLESS
OTHERWISE INDICATED

DRAWN BY Ben Holliday
ACCOUNT REP. Ben Holliday
DRAWING DATE June 16, 2016
REVISION DATE September 11, 2018

STORE NUMBER	STORE ADDRESS
L03582	Chick-fil-A at Vienna, VA Maple Avenue, NW Vienna, VA

THIS DRAWING IS AN ORIGINAL, UNPUBLISHED DESIGN CREATED
BY CLAYTON SIGNS, INC. IT IS NOT TO BE REPRODUCED,
CHANGED, OR EXHIBITED TO ANYONE OUTSIDE OF YOUR
COMPANY IN WHOLE OR IN PART WITHOUT WRITTEN PERMISSION
FROM THE OWNER OF CLAYTON SIGNS, INC.. ANY SUCH ACTIONS
MAY BE SUBJECT TO LEGAL ACTION IN A COURT OF LAW
© 2018 ALL RIGHTS RESERVED

LOCATION
B