

# BEAR BRANCH TAVERN

133 MAPLE AVENUE EAST  
VIENNA, VA 22180

BAR PRESENTATION PACKAGE - REVISION 2  
06.14.19

**HapstakDemetriou<sup>+</sup>**  
ARCHITECTURE | DESIGN

2715 M St NW, 4th Fl.  
Washington, DC 20007

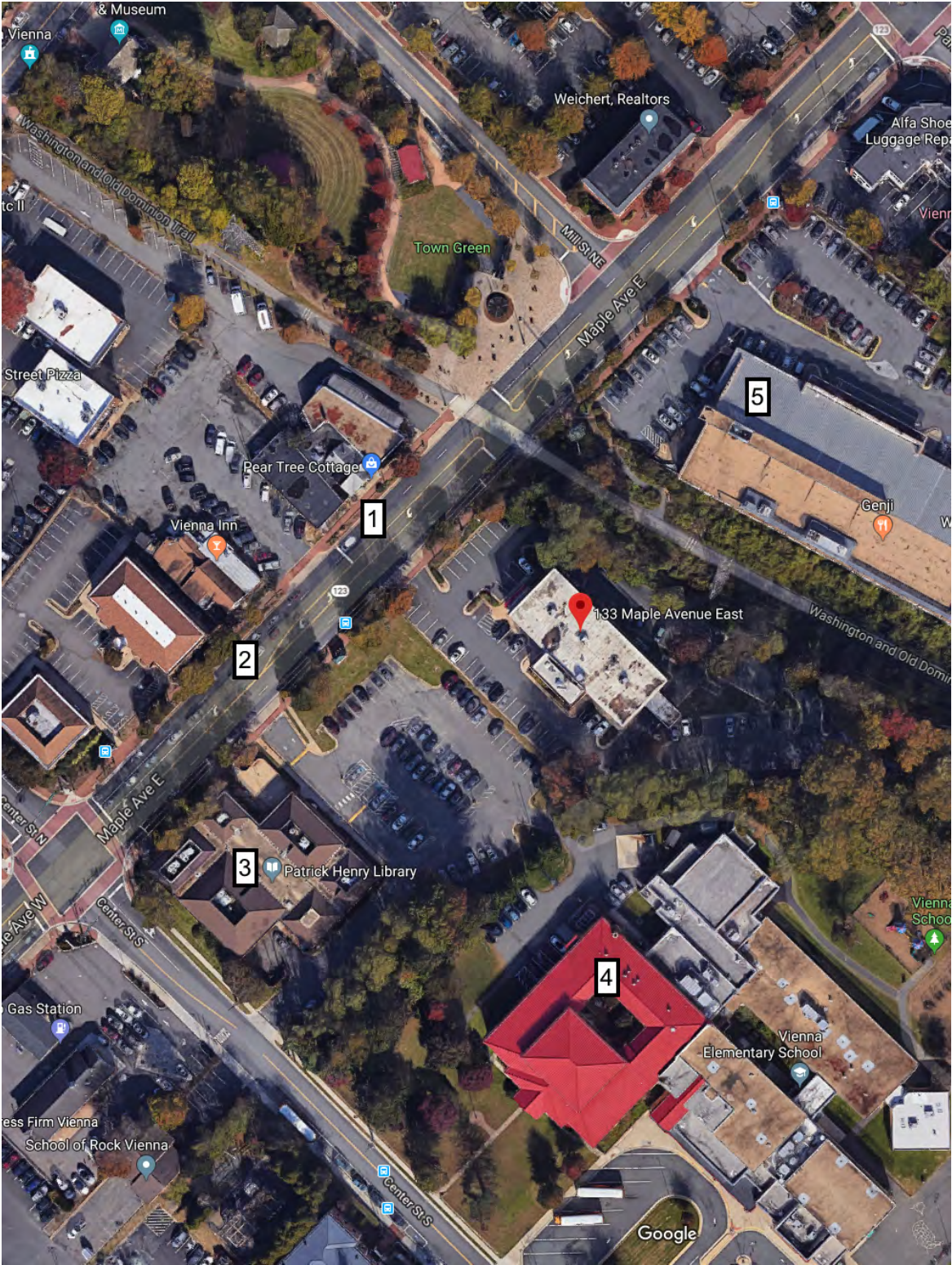
[www.hd-ad.com](http://www.hd-ad.com)  
202.333.9038

**SK.01**

© HapstakDemetriou + pllc. 2019



NEIGHBORING PROPERTIES



1



2



5



3



4



BEAR BRANCH TAVERN  
BAR PRESENTATION PACKAGE

EXISTING SITE PHOTOS



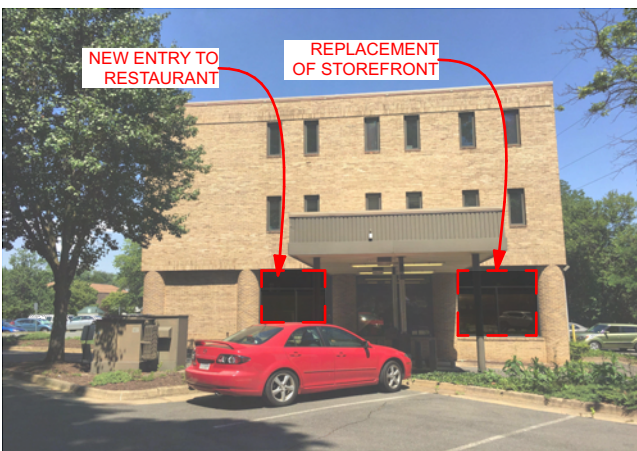
EXISTING ADDITION VESTIBULE TO BE REMOVED



EXISTING FRONT ELEVATION



EXISTING VESTIBULE TO BE REMOVED



REAR ELEVATION WITH EXISTING AWNING TO REMAIN TO BE INFILLED AS NEW SCREENED PORCH



EXISTING SITE PERSPECTIVE FROM MAPLE AVE



PERSPECTIVE OF NEW DECK LOCATION



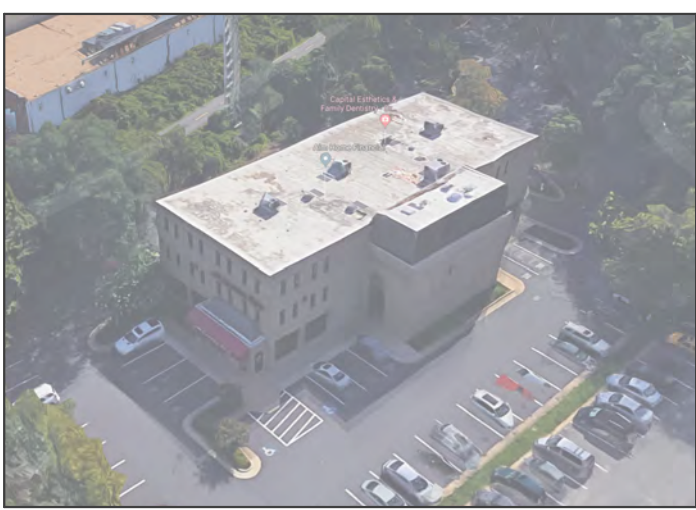
EXISTING BANK DRIVE-THRU STRUCTURE



BUILDING AC UNITS LOCATED ALONG SIDE ELEVATION



RESTAURANT AC UNITS LOCATED ALONG SIDE ELEVATION TO BE REPLACED



EXISTING FRONT PERSPECTIVE



EXISTING XFMR LOCATION



PROPOSED LOCATION FOR NEW ADA PARKING



SIDE ELEVATION AND FUTURE VENTILATION LOCATION



EXISTING REAR BACK PERSPECTIVE



OVERVIEW OF SITE



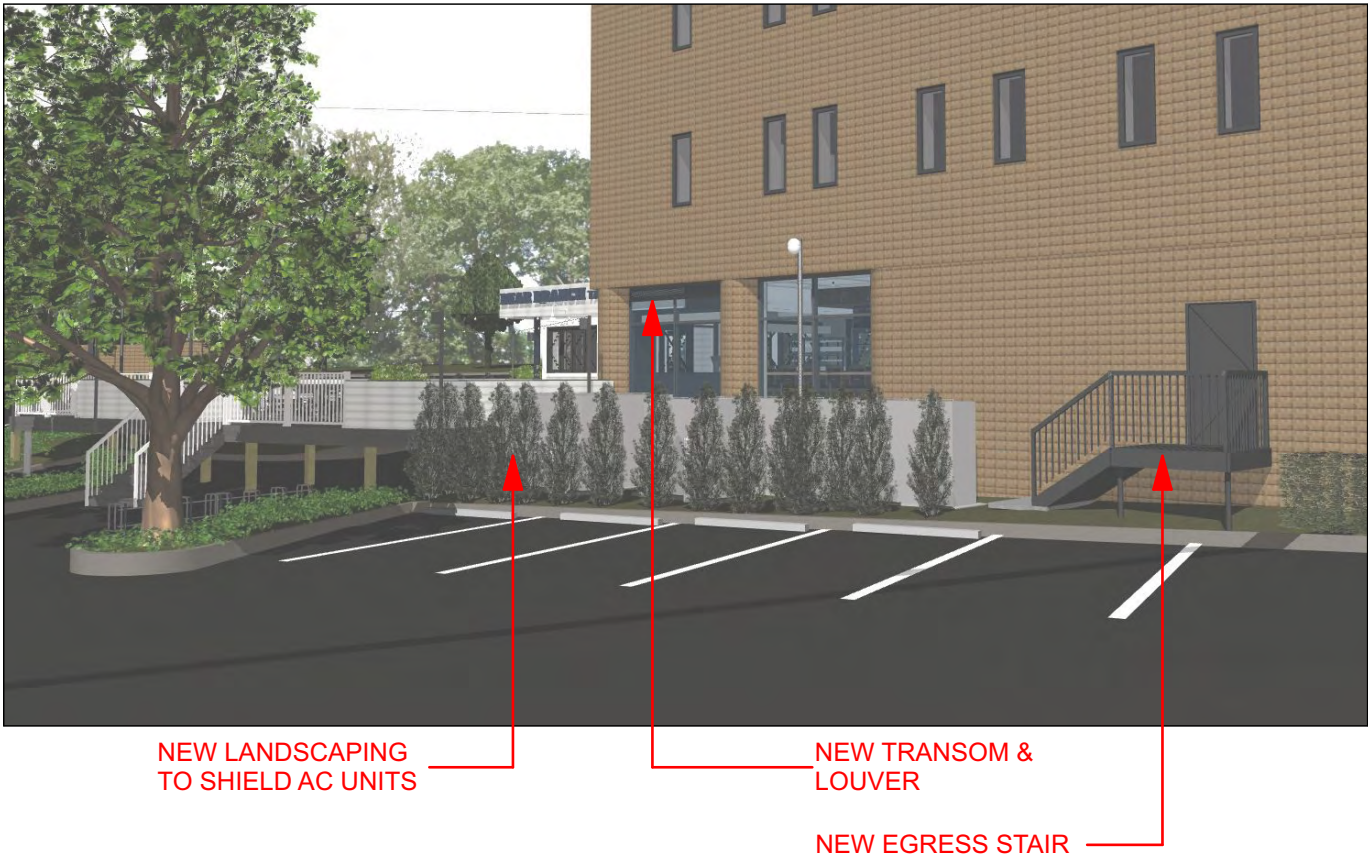


OVERVIEW OF SITE



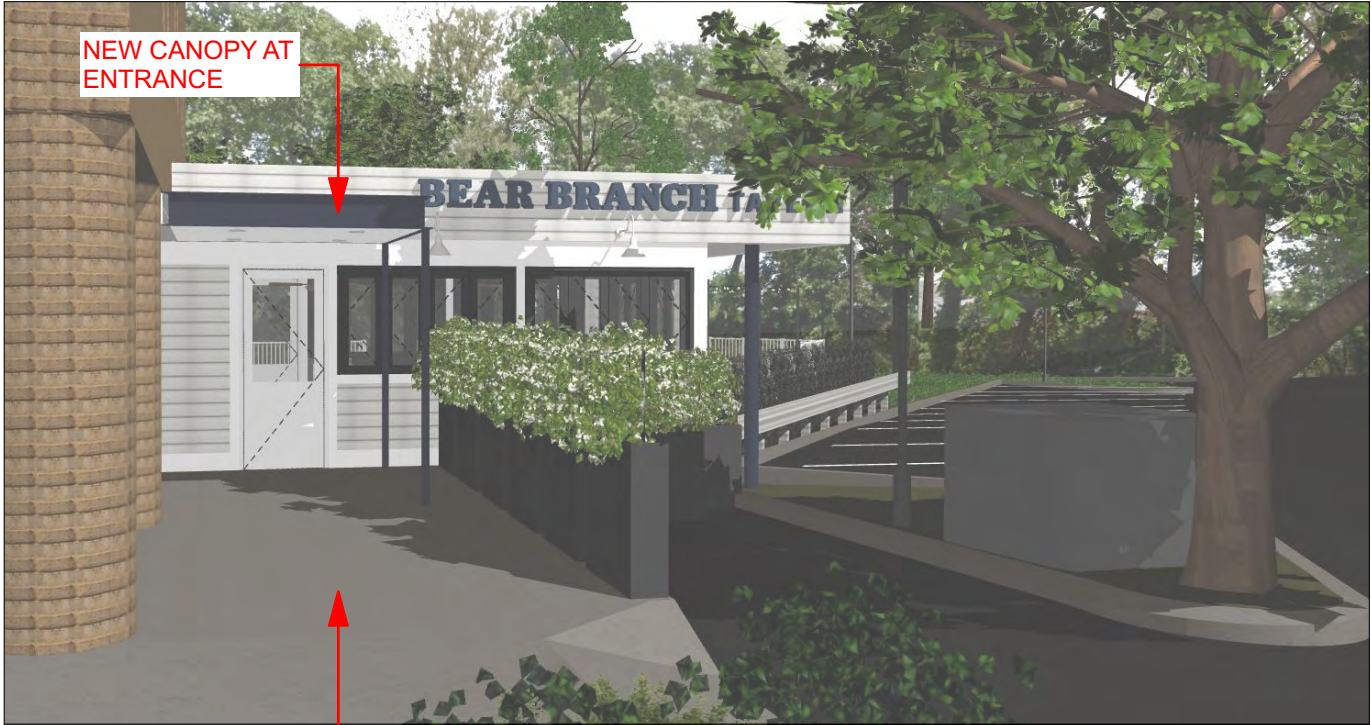


EXTERIOR RENDERINGS





EXTERIOR RENDERINGS



NEW CANOPY AT  
ENTRANCE

NEW SIDEWALK  
FOR ENTRANCE

NEW SIGNAGE - BOTH  
SIDES OF ENCLOSURE



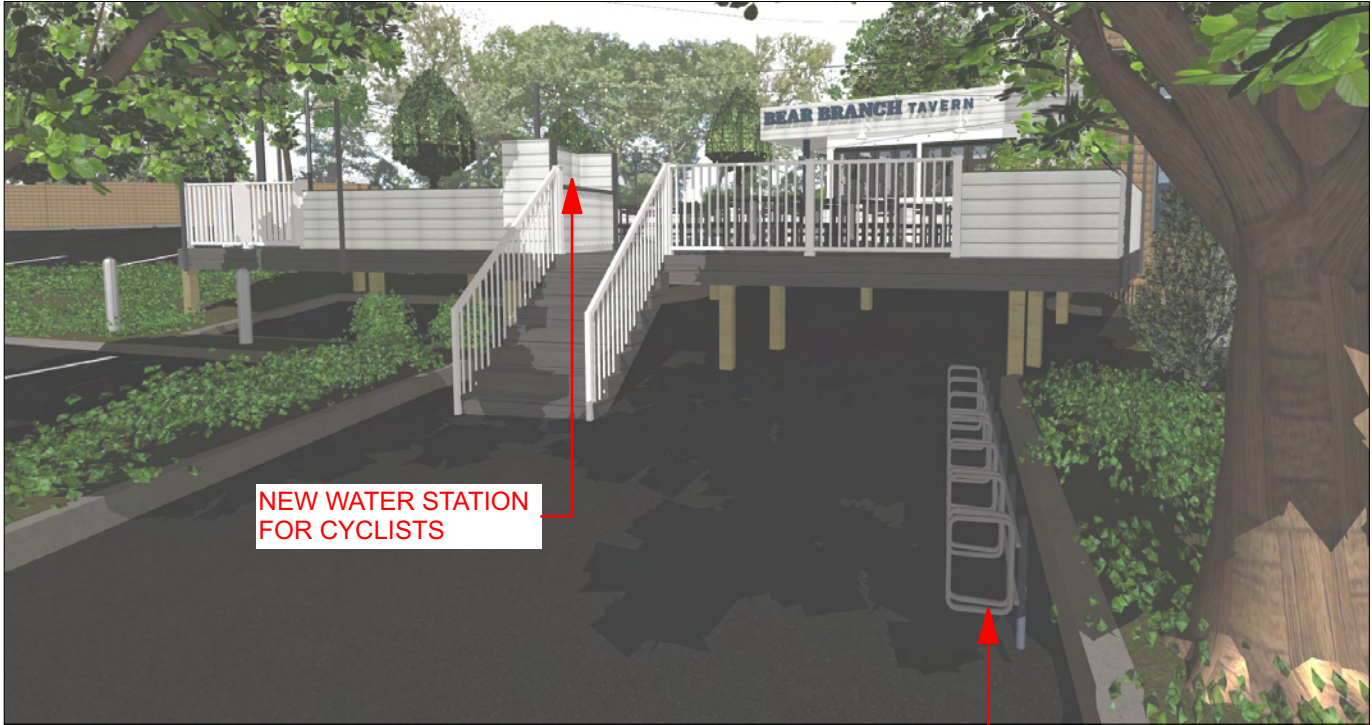
NEW ENCLOSURE AT  
EXISTING CANOPY

NEW LANDSCAPING  
& GUARDRAIL



NEW STRING  
LIGHTS

NEW DECK FOR  
OUTDOOR SEATING



NEW WATER STATION  
FOR CYCLISTS

NEW BIKE RACKS  
FOR CYCLISTS



ELEVATIONS



EXTERIOR ELEVATION





EXTERIOR ELEVATION





EXTERIOR ELEVATION





EXTERIOR ELEVATION





EXTERIOR ELEVATION





EXTERIOR ELEVATION





EXTERIOR MECHANICAL UNITS



New Exhaust to have Stainless Steel Finish





MATERIALS



A. EXTERIOR MATERIAL PALETTE



MATERIAL A PROFILE:  
NICKEL GAP



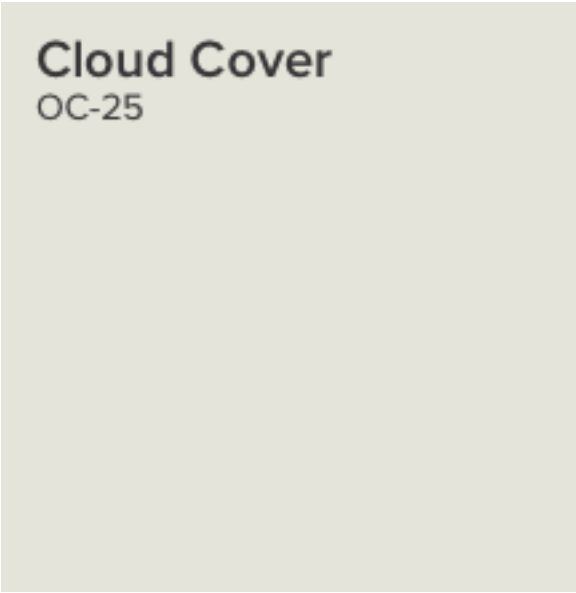
EXISTING BRICK COLOR



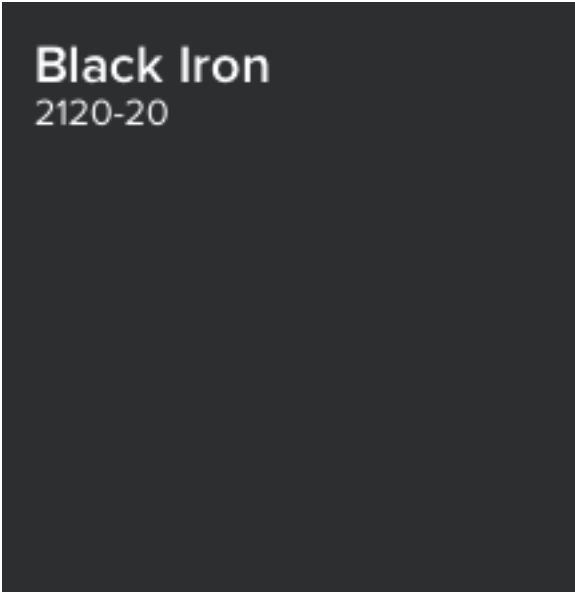
EXISTING STOREFRONT COLOR



SIDING COLOR A.1:  
BENJAMIN MOORE  
OC-56 MOONSHINE



TRIM COLOR A.2:  
BENJAMIN MOORE  
OC-25 CLOUD COVER



SIDING COLOR A.3:  
BENJAMIN MOORE  
2120-20 BLACK IRON

MATERIAL A: BORAL TRUEXTERIOR SIDING  
POLY-ASH - PREPRIMED ONLY

HIGHLY MOISTURE RESISTANT  
NO NEED TO PRIME OR PAINT  
END-CUTS OR FIELD CUT EDGES



B. EXTERIOR DECKING & BENCH



MATERIAL B: TIMBERTECH  
PRO TROPICAL COLLECTION  
COLOR: AMAZON MIST





C. EXTERIOR RAILINGS & BARRIERS



**MATERIAL C.1:** AZEK  
PREMIER RAIL SYSTEM  
**COLOR:** BLACK



**MATERIAL C.2:** AZEK  
PREMIER RAIL SYSTEM  
**COLOR:** WHITE



**PLANTER BOX C.3:**  
FLOWER WINDOW BOXES  
NEW AGE MODERN HANGING RAIL  
PLANTERS, PVC, 8"H x 8"W x 48"L  
**COLOR:** BLACK



**PLANTER BOX C.4:**  
VERADEK  
METALLIC GALVANIZED POWDER-  
COATED STEEL, 42"H x 38"W  
**COLOR:** BLACK

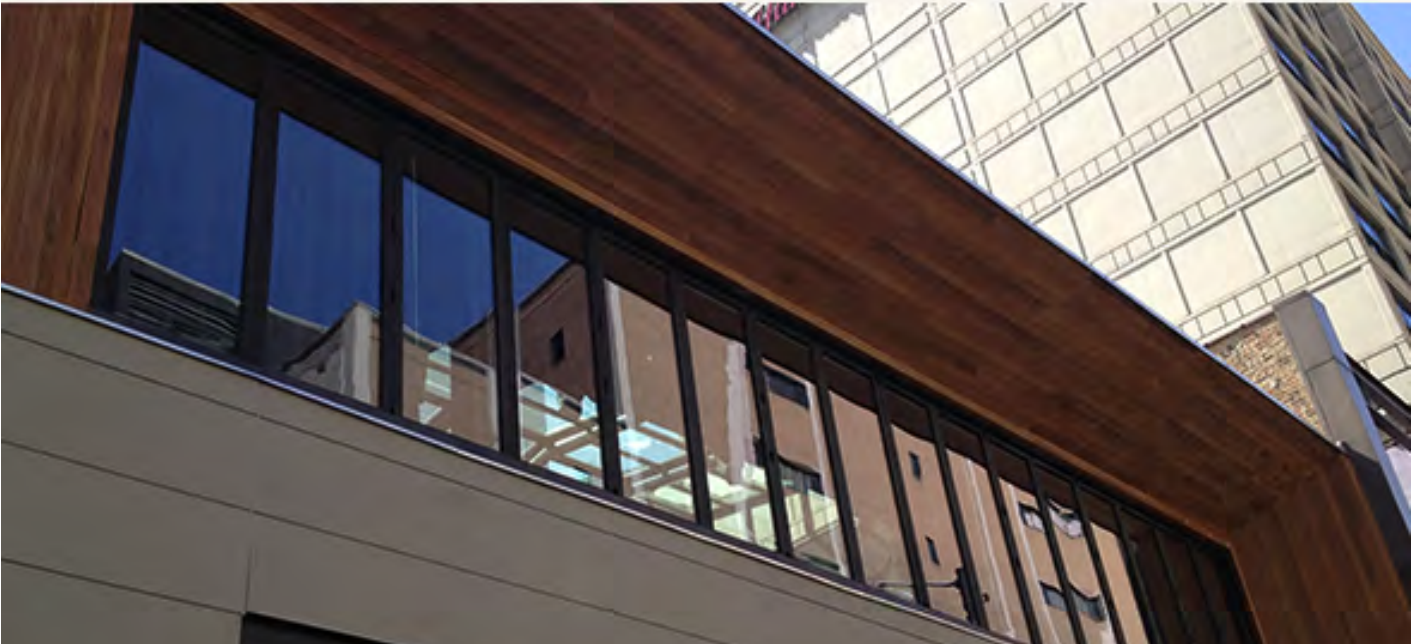


BLUE




**BOLLARD C.5:**  
ULTRASITE  
SHORELINE BOLLARD  
48"H x 6"DIA, INGROUND  
POWDER COATED  
**COLOR:** BLUE



D. EXTERIOR OPERABLE WINDOWS / STOREFRONT FINISH



**TYPE:** LA CANTINA  
FOLDING SYSTEMS  
**FINISH D:** ALUMINUM - DARK BRONZE

		
CLEAR ANODIZED	BRONZE ANODIZED	WHITE
Standard finish for: Aluminum Aluminum Thermally Controlled Contemporary Clad	Standard finish for: Aluminum Aluminum Thermally Controlled Contemporary Clad	Standard finish for: Aluminum Aluminum Thermally Controlled Contemporary Clad

**TYPE:** NEW STOREFRONT TO MATCH EXISTING  
**FINISH D:** ALUMINUM - DARK BRONZE



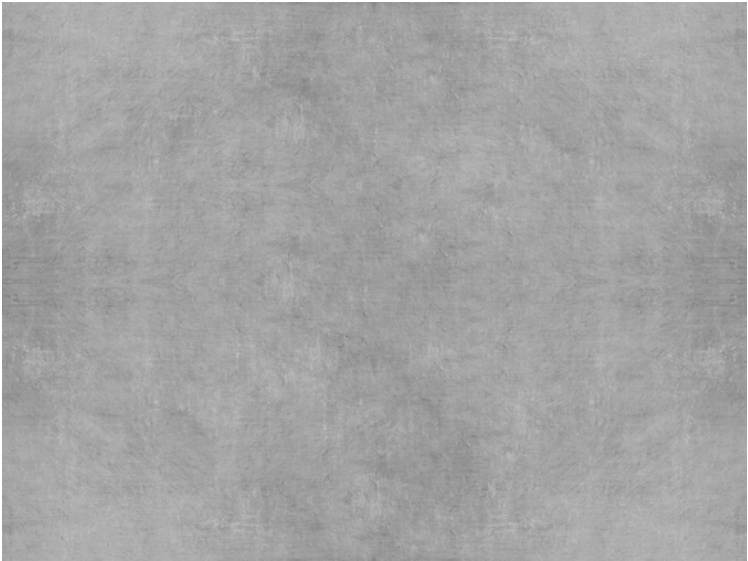
E & F. EXTERIOR FURNITURE/COUNTERTOP



**TYPE:** SENG0 #263  
EMU CONTRACT  
**FINISH E:** 22 ANTIQUE IRON



**TYPE:** SENG0 BAR #264  
EMU CONTRACT  
**FINISH E:** 22 ANTIQUE IRON



**TYPE F:** CUSTOM PRECAST  
CONCRETE COUNTERTOP  
PROVIDED BY VENDOR



**TYPE:** SOLID ADA  
48\"/>

**NOTES:** EXTERIOR TABLES TO HAVE  
SLATS VERSUS HEX HOLES OR SOLID.



G. EXTERIOR LIGHTING



**TYPE G.1:** BARN LIGHT RLM FIXTURE FAMILY  
DRAKE/DINO SERIES  
BLE-G-WD12-200-G15  
**FINISH:** WHITE



**TYPE G.2:** BULBRITE  
STRING15/E26-S14KT (810002)  
**FINISH:** BLACK CORD/CLEAR BULBS



**TYPE G.3:** WAC LIGHTING  
R2BRD-F927-WT  
2" REMOTE LED DOWNLIGHT  
**FINISH:** WHITE



H. & I. EXTERIOR PORCH DOOR & STEEL COLOR



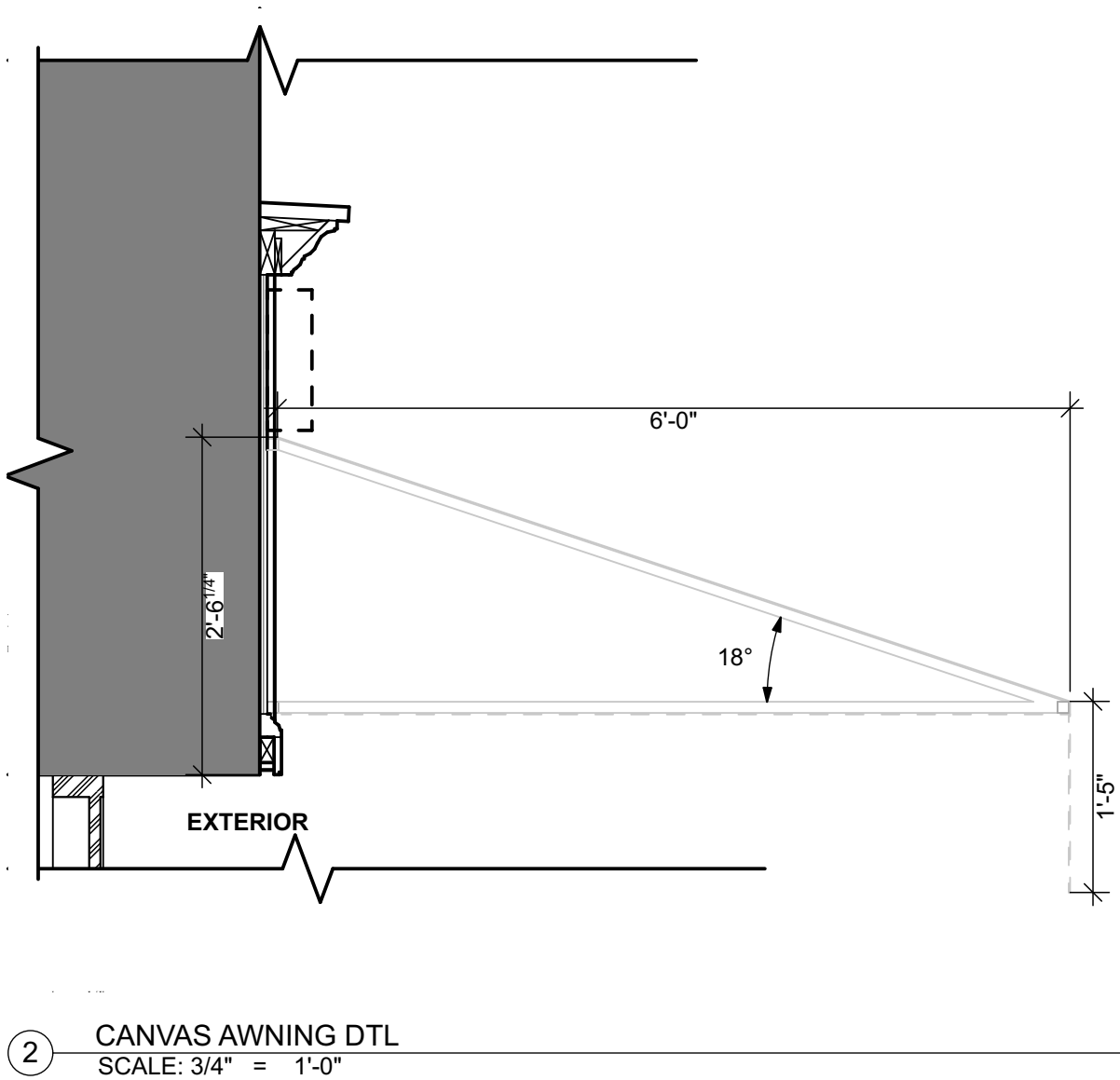
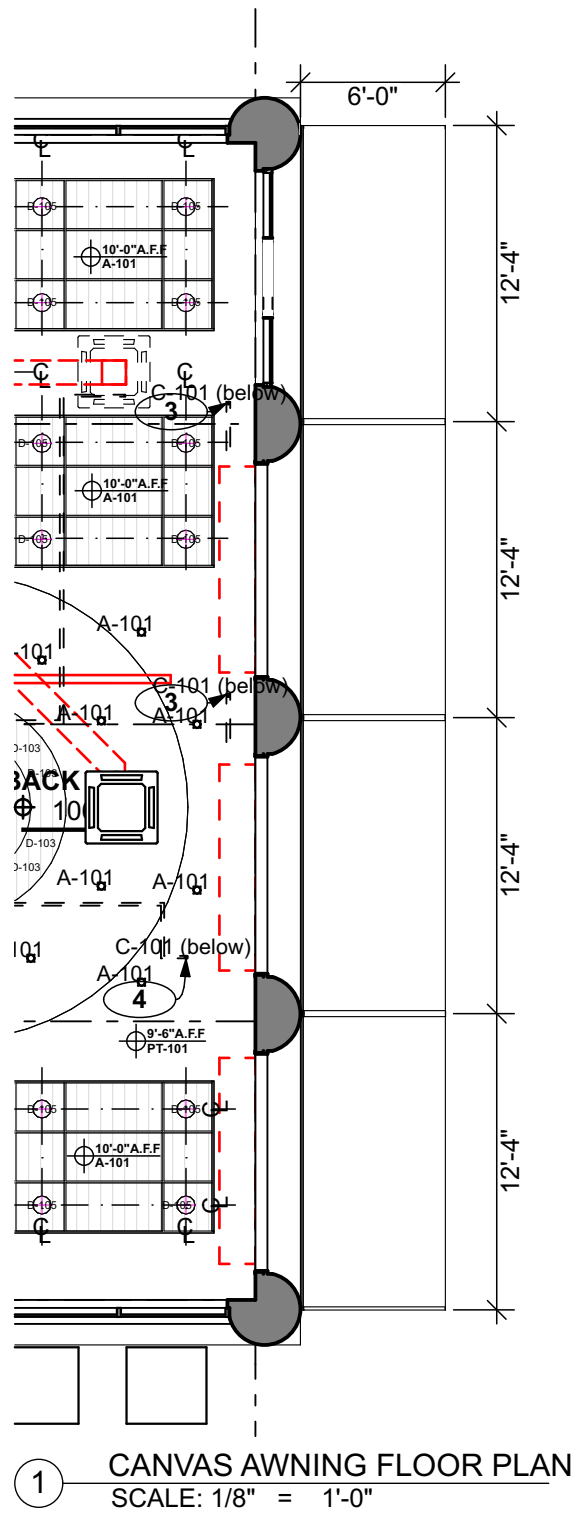
**TYPE H:** PELLA STORM DOORS  
ROLSCREEN STORM DOORS  
MODEL 3550  
**FINISH:** WHITE



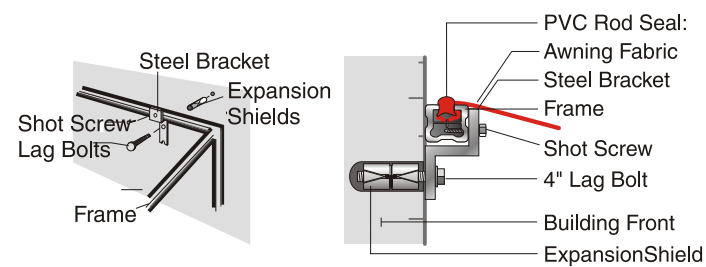
**STEEL COLOR I:**  
BENJAMIN MOORE  
1680 HUDSON BAY



J. CANVAS AWNING



AWNING INSTALLATION DETAIL



**FABRIC:** SUNBRELLA SHADE COLLECTION  
4741 BEAUFORT AZURE  
FLAME RETARDANT FABRIC

**NOTE:** CANVAS AWNING DESIGN WILL BE  
PROVIDED BY VENDOR



BEAR BRANCH TAVERN  
BAR PRESENTATION PACKAGE

SIGNAGE



SIGN 1



KEY PLAN

**TYPE:** HALO-LIT CHANNEL LETTERS  
**FINISH:** S294 CP, C100 M69 Y7 K30

**NOTE:** ALL SIGNAGE WILL BE PROVIDED BY SIGNAGE VENDOR



294 CP  
C100 M69 Y7 K30

SIGN COLOR

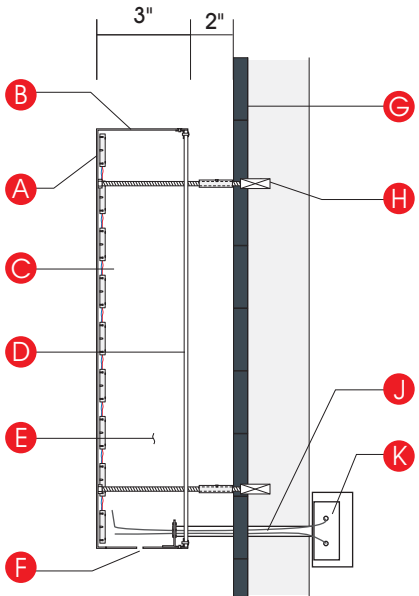


SIGN 3



SIGN 2

HALO-LIT CHANNEL LETTERS



HALO-LIT REVERSE CNL. LTR. (TYP) - REMOTE NTS  
\* ALL ELECTRICAL COMPONENTS UL LISTED

- A. .125 ALUM. FACE PTD.
- B. .063 WELDED ALUM. RETURNS PTD.
- C. WHITE LX-ECO3S 6500k NC LED'S
- D. CLEAR LEXAN LETTERBACKS
- E. LETTER INTERIOR PTD. W/ WHITE LIGHT ENHANCING PAINT
- F. WEEP HOLES AS REQ'D
- G. TRESPA PLANKS - PURE EBONY SLATE
- H. 3/8" ALL-THREAD INTO DBL. EXP. ANCHORS
- J. WIRING IN LIQUITITE TO ELEC. CIRCUIT
- K. REMOTE POWER SOURCE IN METAL BOX



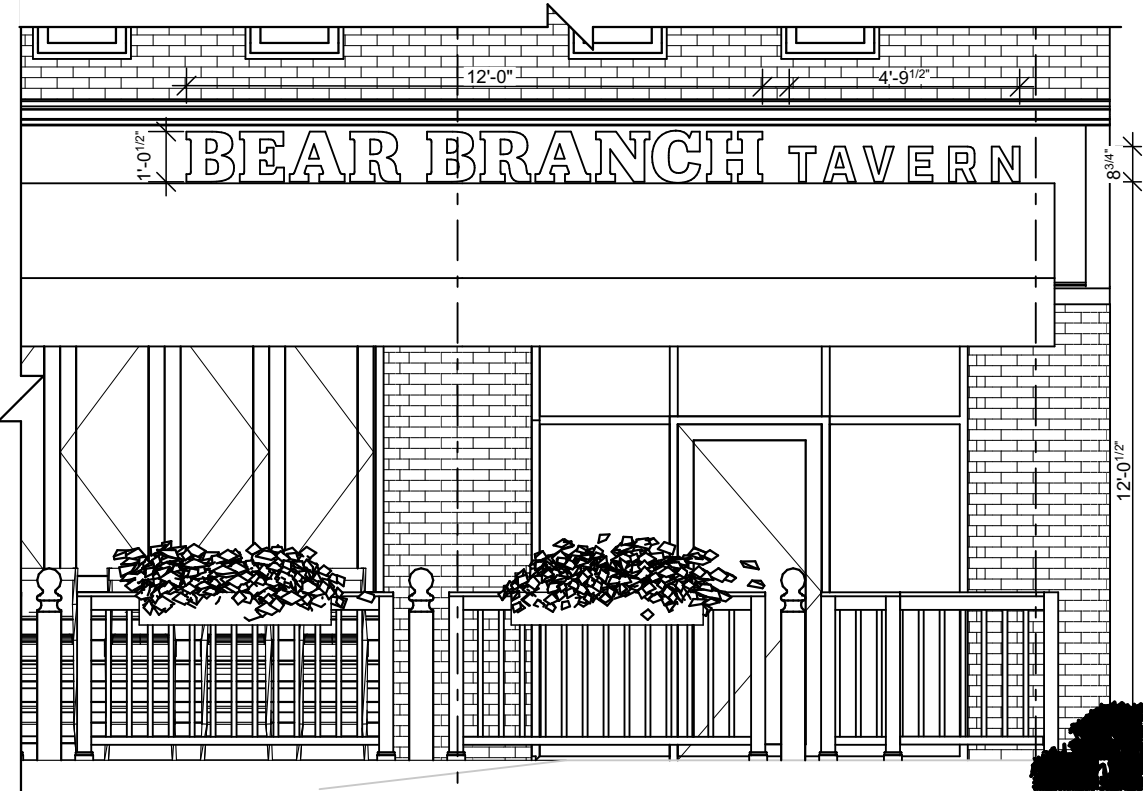
WAYFINDING SIGN

**TYPE:** FREE STANDING,  
NON-ILLUMINATED SIGN  
**FINISH:** WHITE BACKGROUND;  
LETTERING & STEEL POSTS:  
S294 CP, C100 M69 Y7 K30 **SK.20**

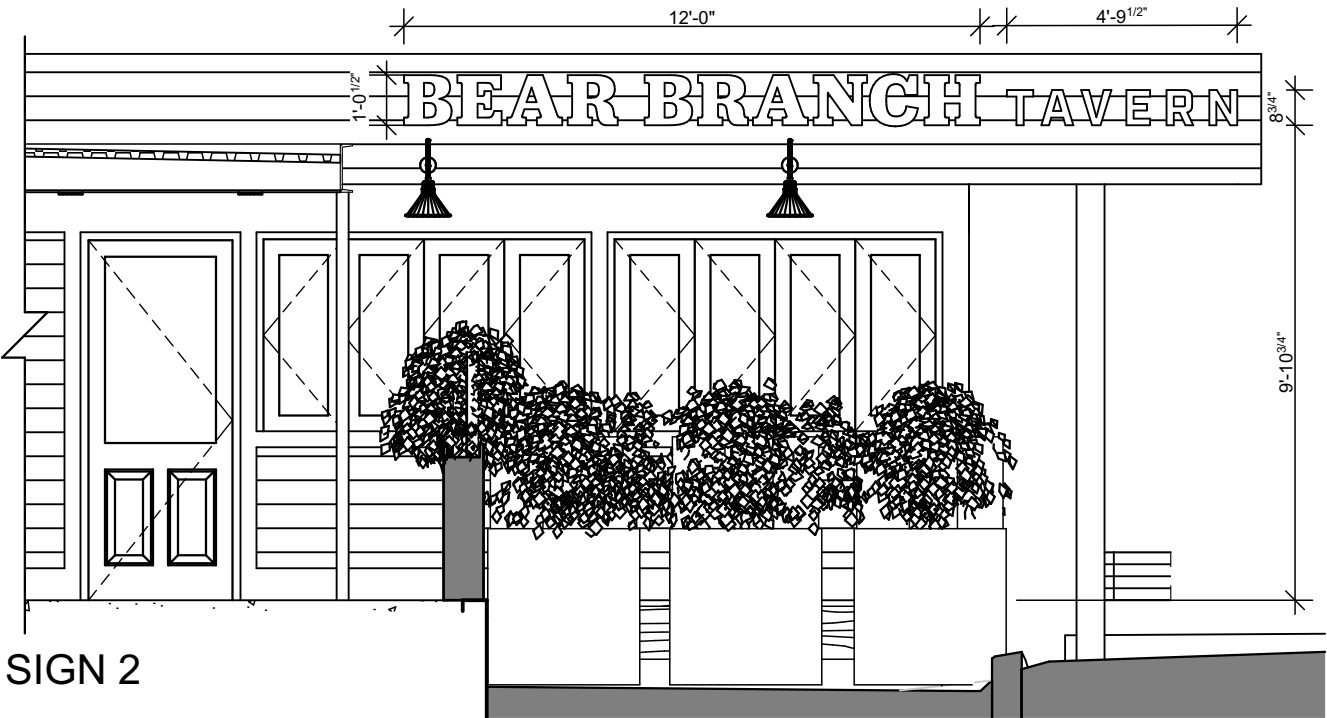


BEAR BRANCH TAVERN  
BAR PRESENTATION PACKAGE

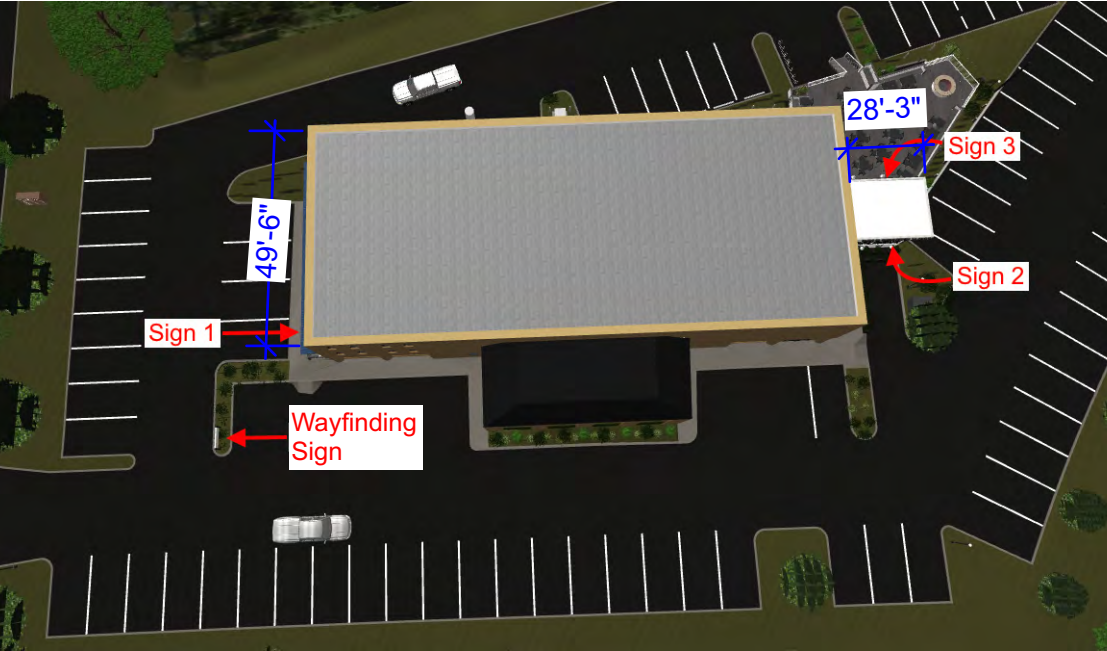
SIGNAGE



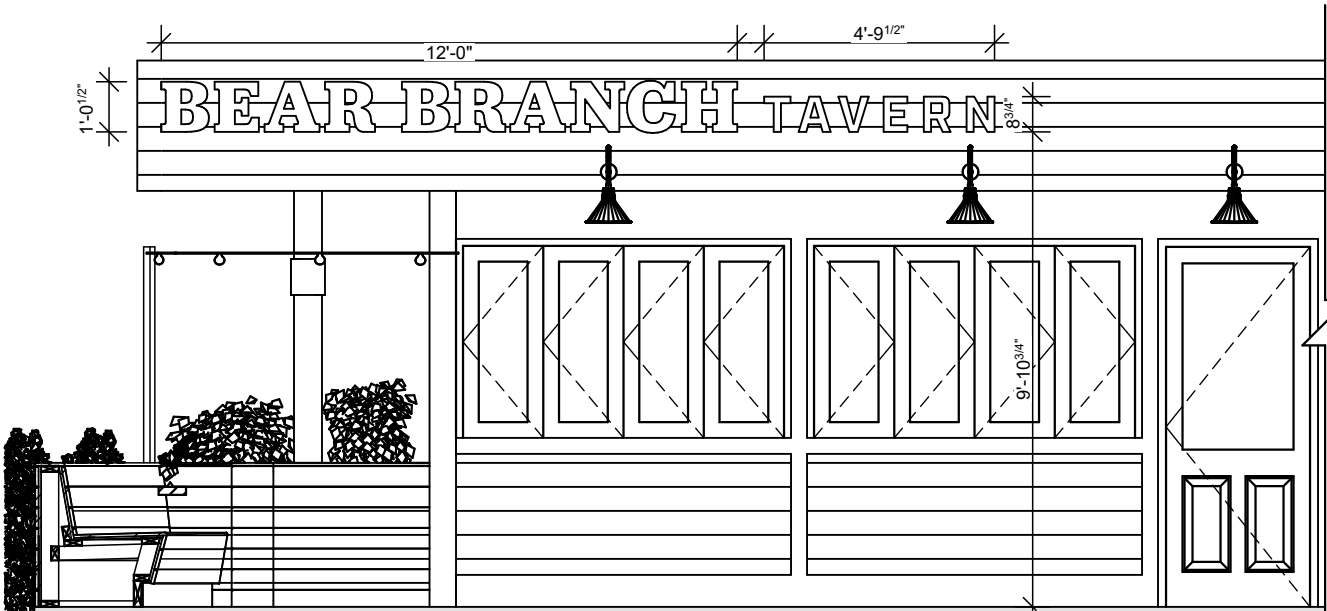
SIGN 1



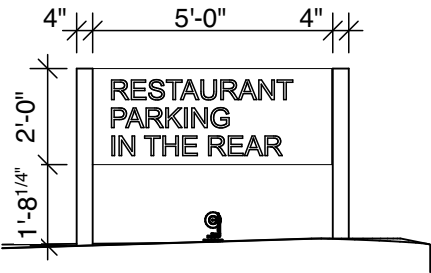
SIGN 2



KEY PLAN - FACADE LENGTHS



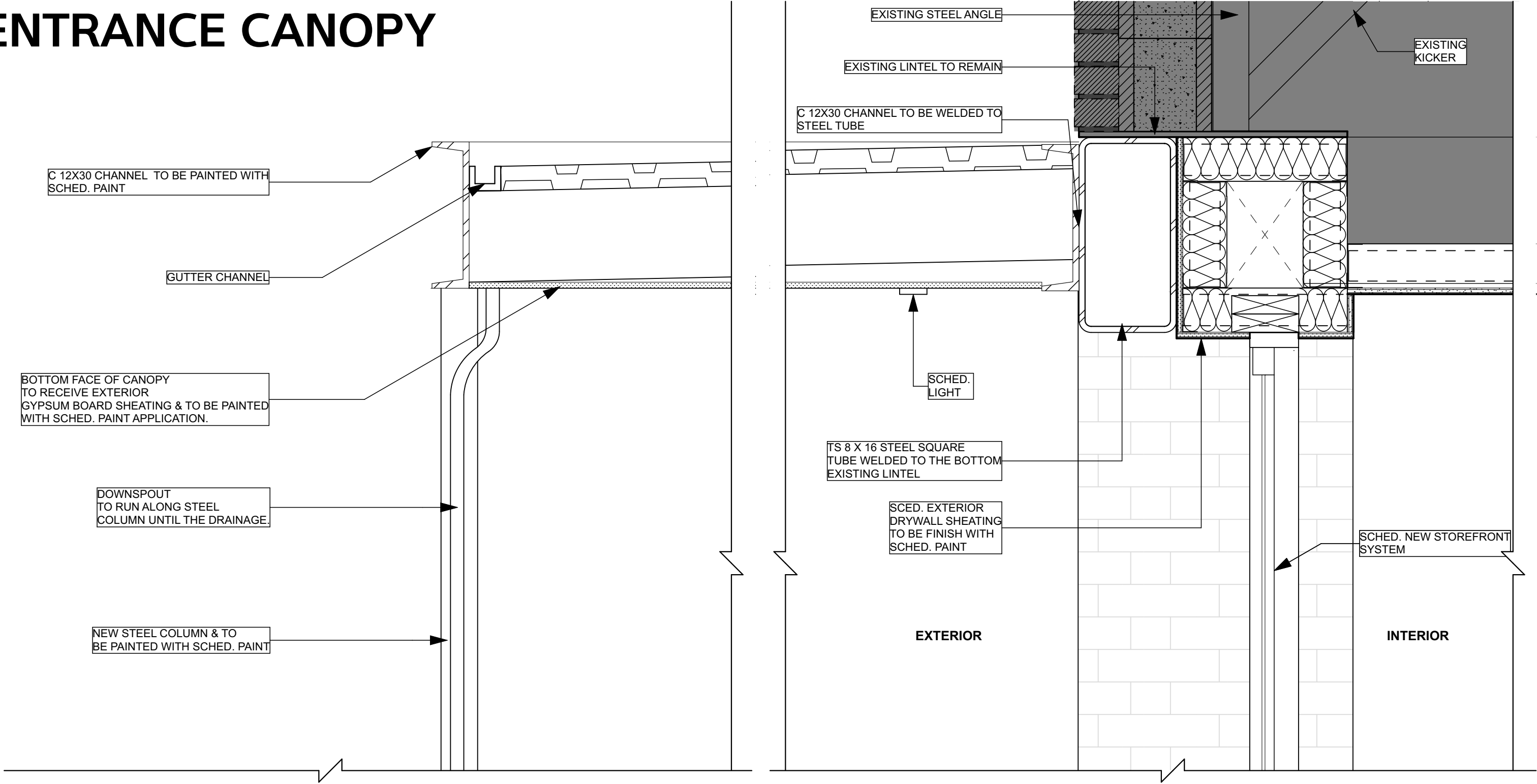
SIGN 3



WAYFINDING SIGN



ENTRANCE CANOPY



EXTERIOR STEEL CANOPY SECTION

SCALE: 1 1/2"= 1'-0"