

NEW WINDOWS

BRICK
RUSTICATION

NEW WINDOWS

ARCHED PARAPET

STORE FRONT
DESIGN

BRICK
RUSTICATION

LOT 12
ELEV. 1
SCHEME #2

LOT 1
ELEV. 8
SCHEME #3

LOT 2
ELEV. 9
SCHEME #6

LOT 3
ELEV. 10
SCHEME #2B

LOT 4
ELEV. 10
SCHEME #2B

LOT 5
ELEV. 9
SCHEME #5

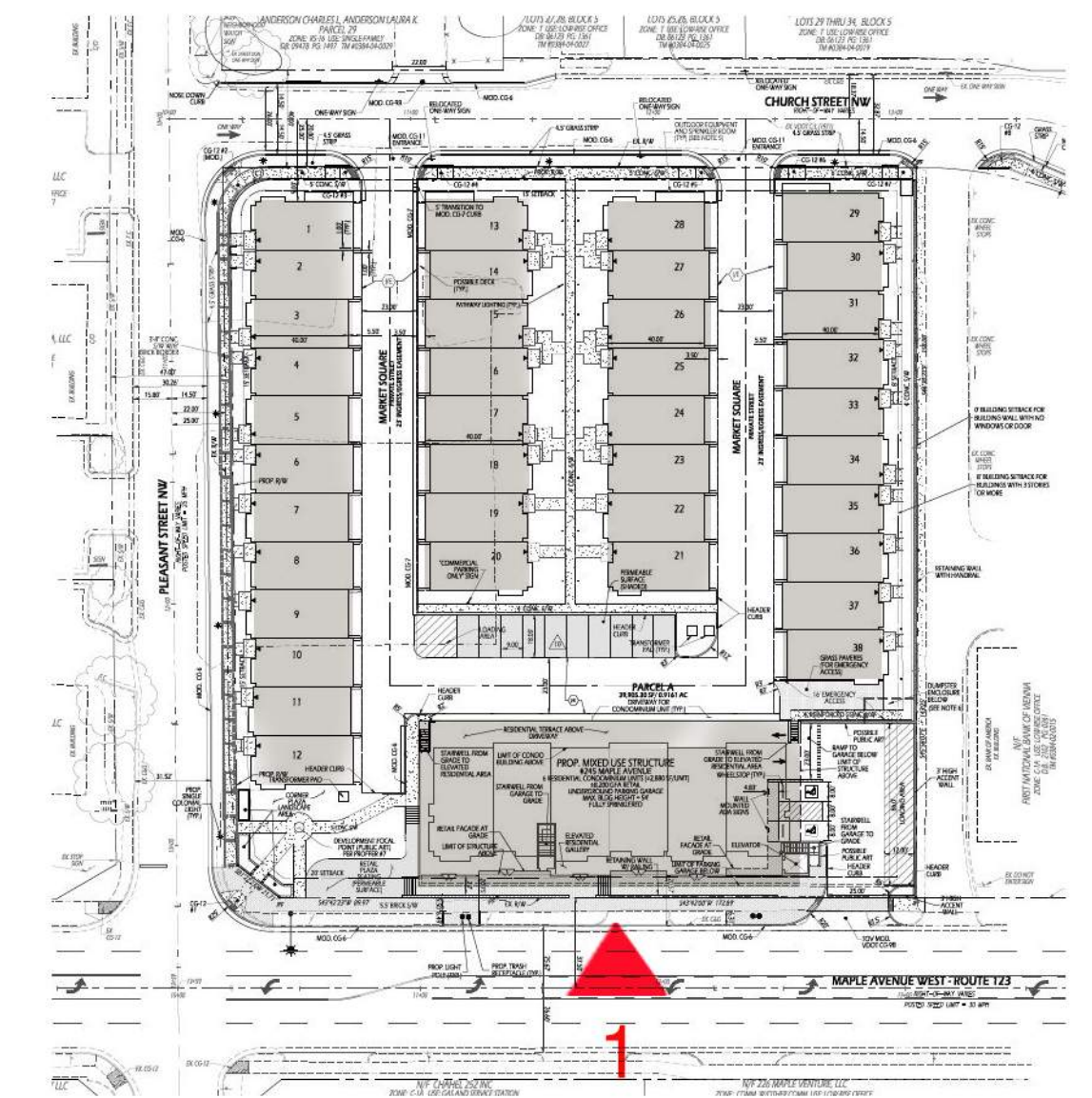
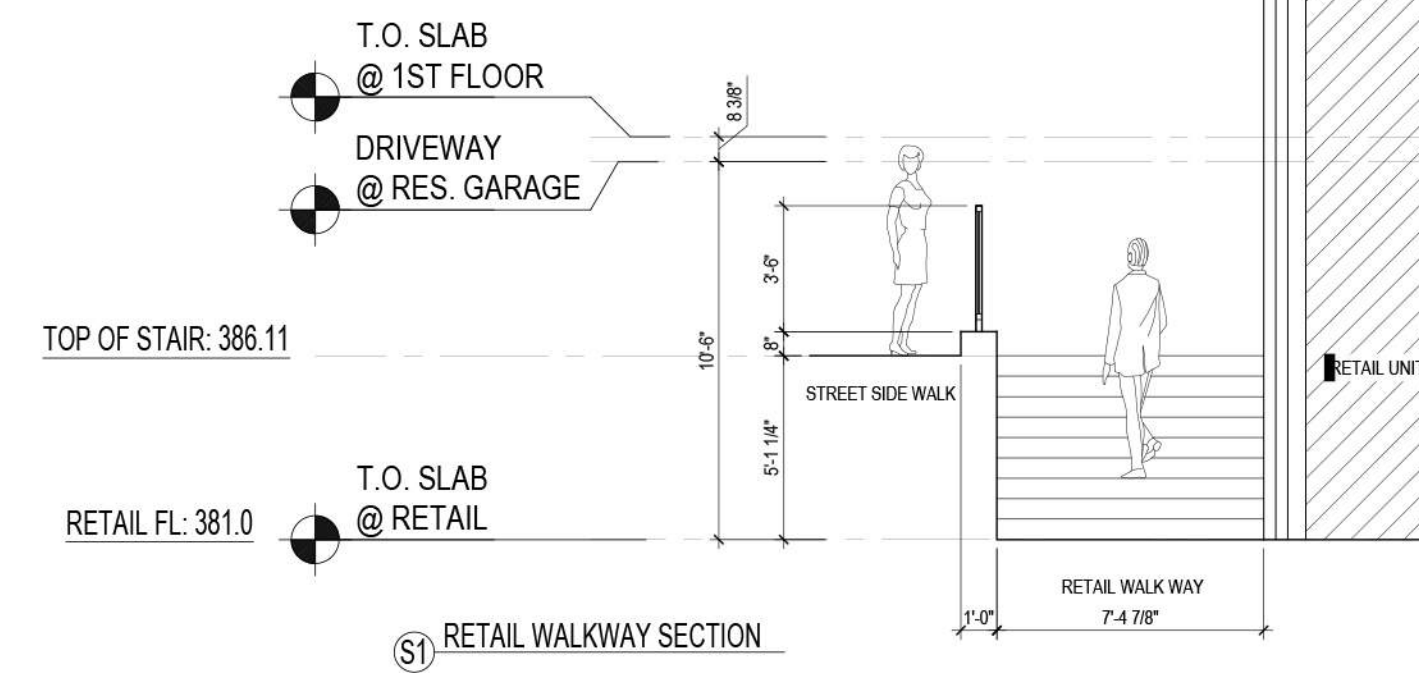
LOT 6
ELEV. 8
SCHEME #3

LOT 38
ELEV. 1
SCHEME #2B

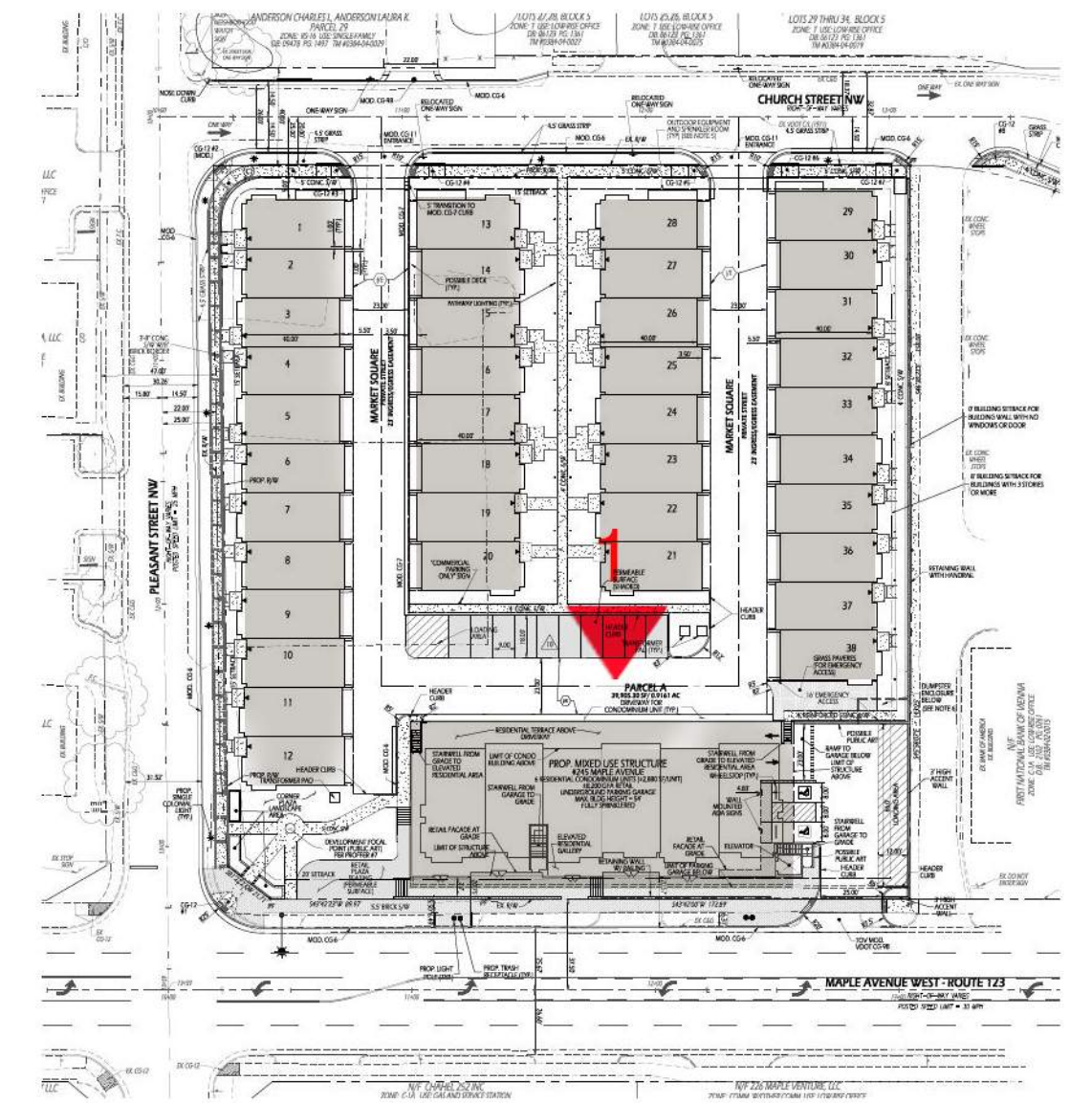
MAPLE AVENUE

1. MAPLE AVENUE - PROPOSED

NOTE: LOCATION OF
FUTURE ART WORK



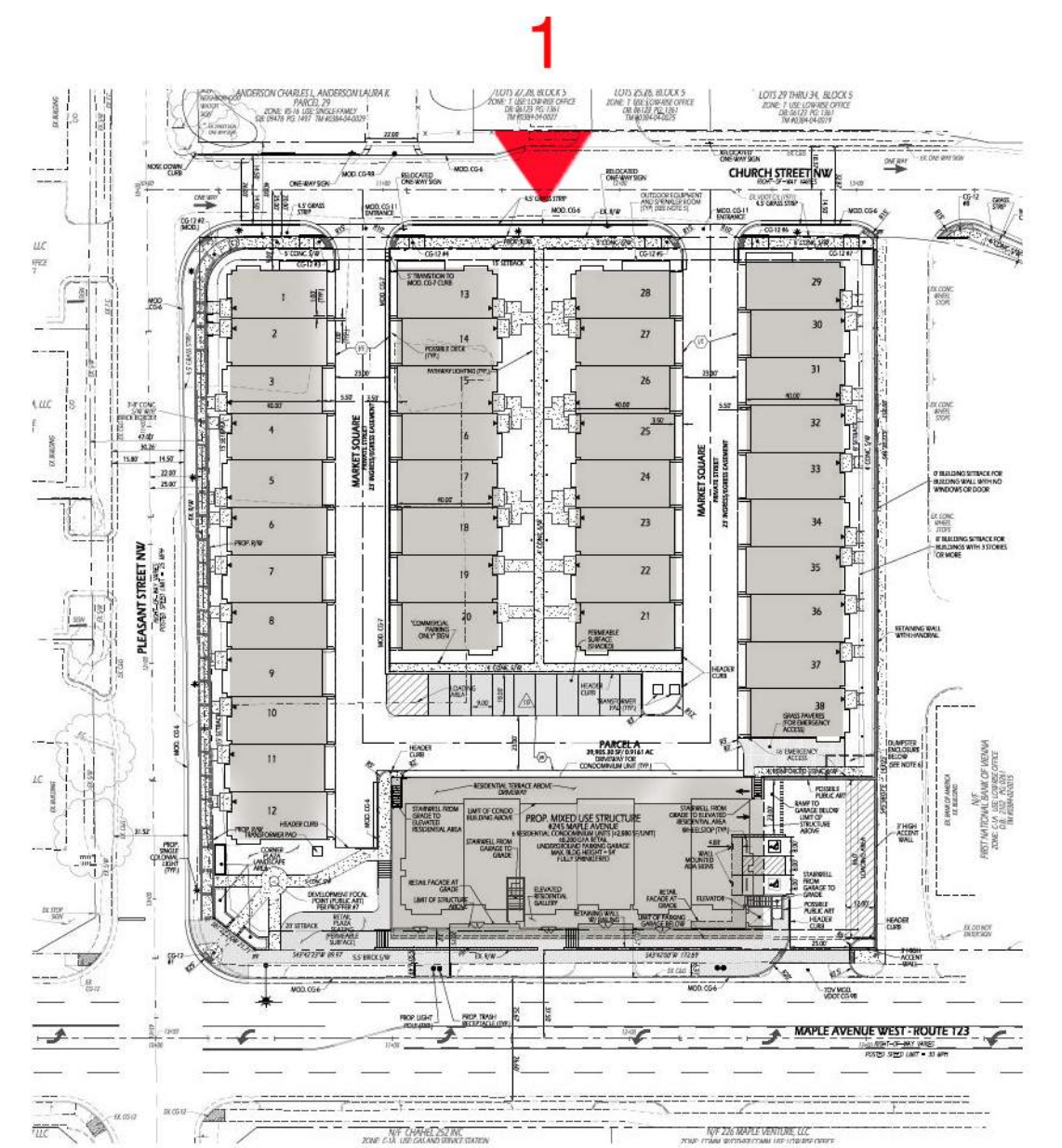
KEY PLAN



KEY PLAN



1. REAR MAPLE AVENUE - PROPOSED



KEY PLAN



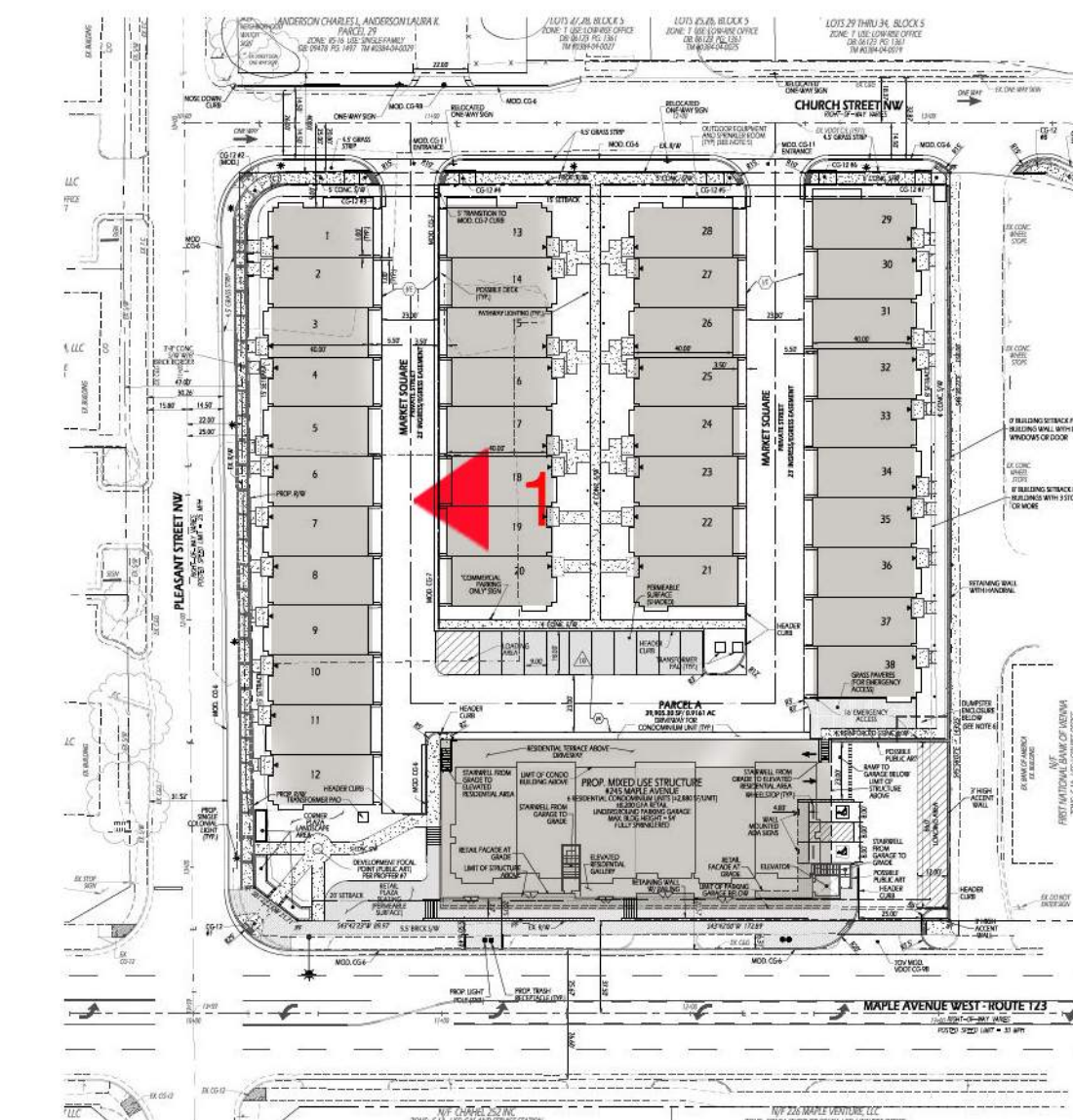
1. 6 PANEL DOOR



1. CHURCH STREET - PROPOSED



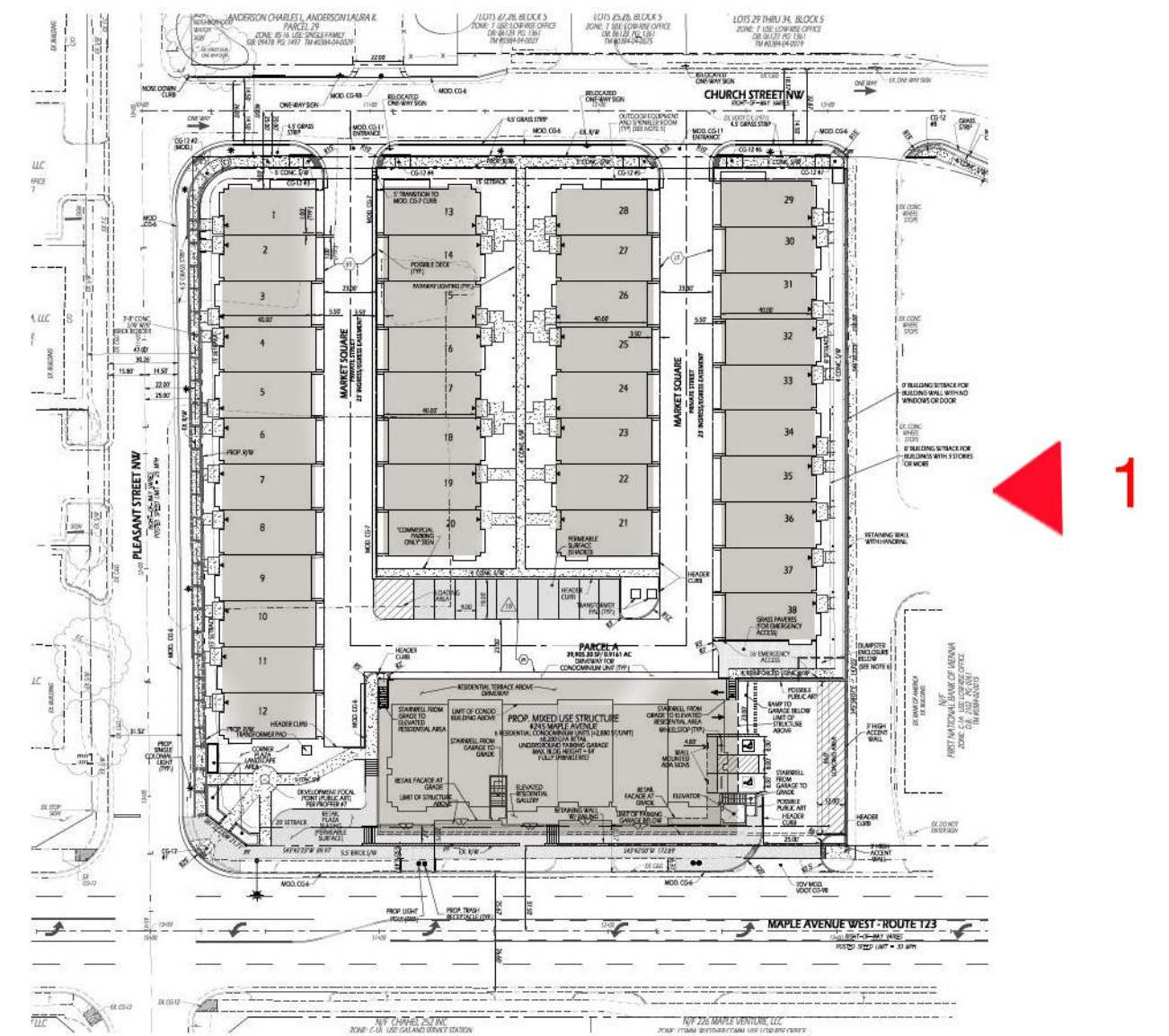
1. PLEASANT STREET - PROPOSED



KEY PLAN



1. PLEASANT STREET - PROPOSED

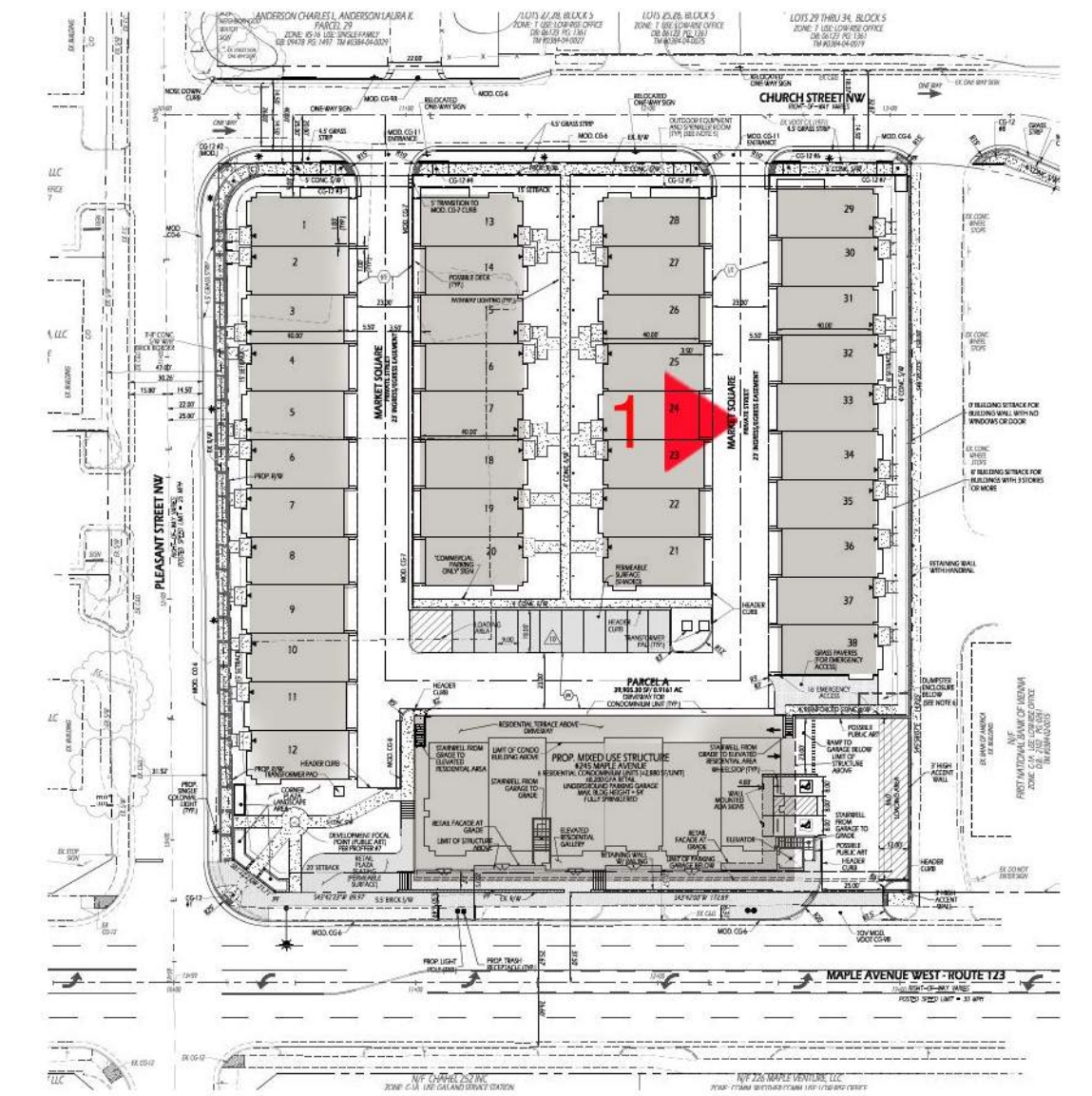


KEY PLAN



NOTE: LOCATION OF
FUTURE ART WORK

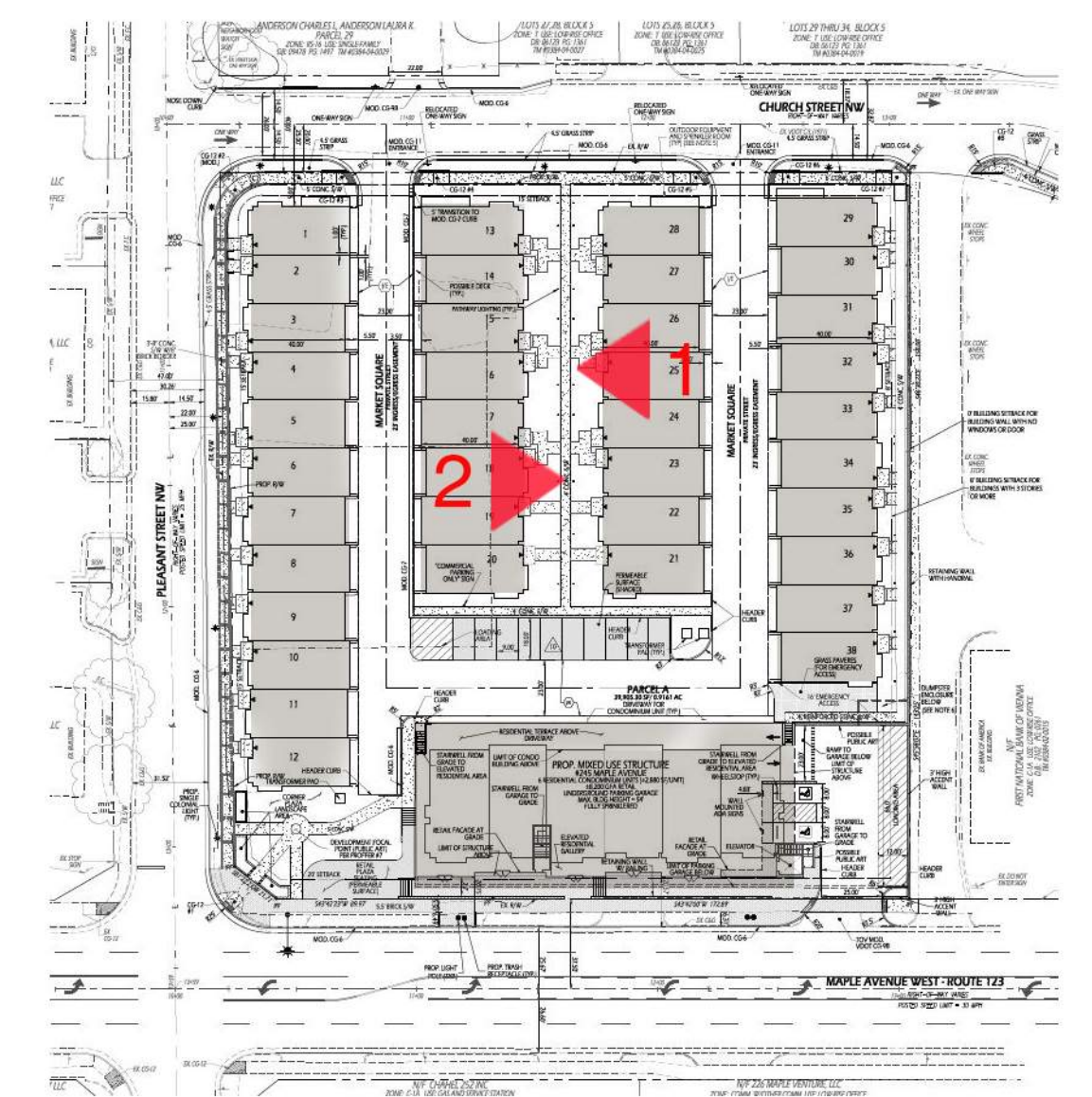
1. BANK OF AMERICA VIEW - PROPOSED



KEY PLAN



1. REAR BANK OF AMERICA STREET VIEW



KEY PLAN

2. INTERIOR STRIP ELEVATION 2



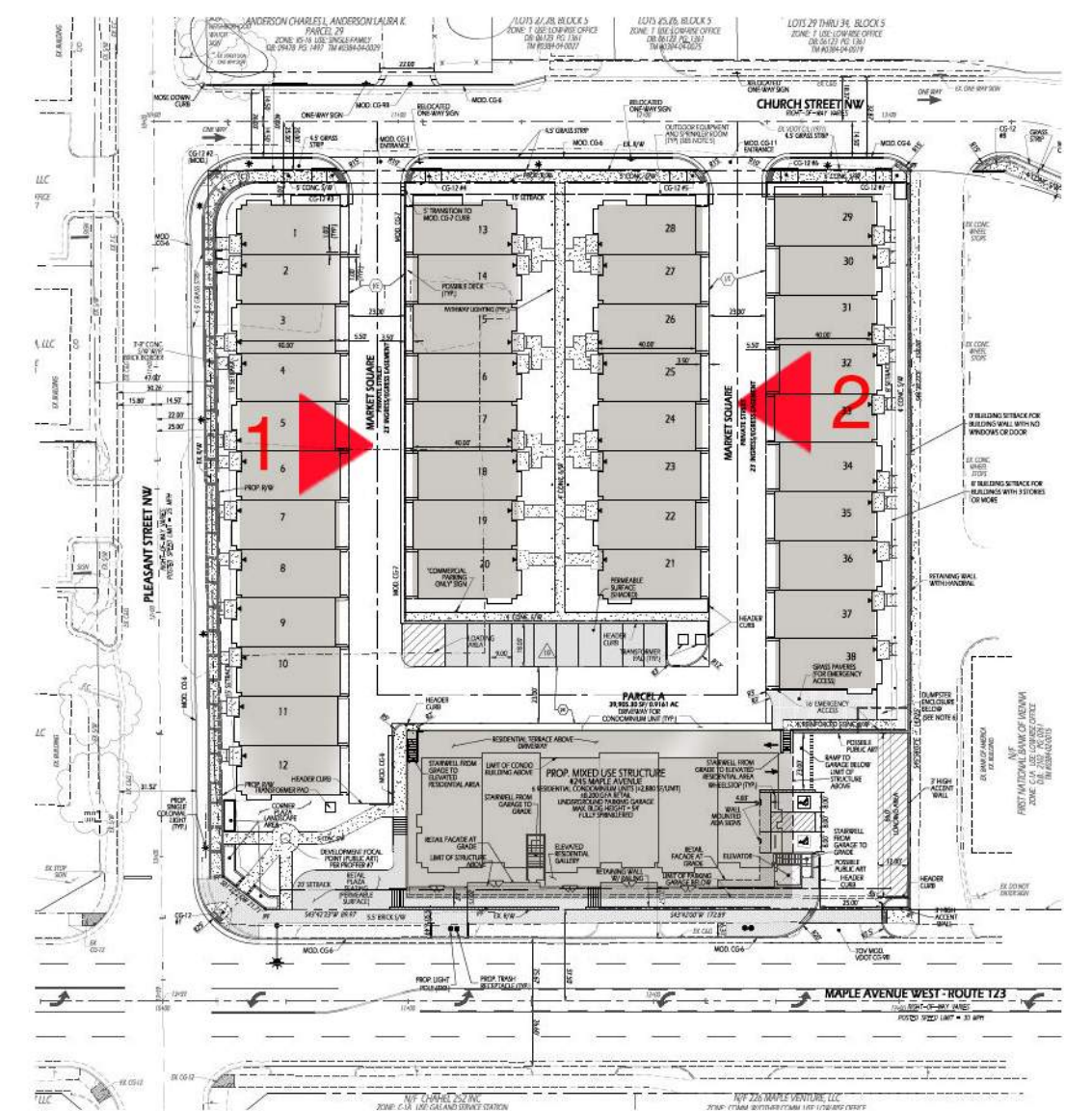
1. INTERIOR STRIP ELEVATION 1



1. REAR INTERIOR STRIP 1



2. REAR INTERIOR STRIP 2



KEY PLAN



MAPLE AVE.

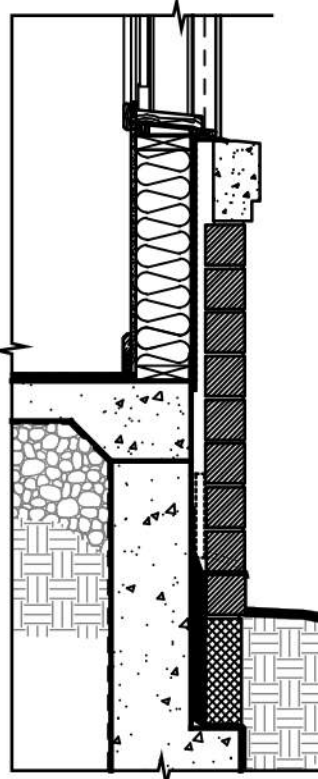
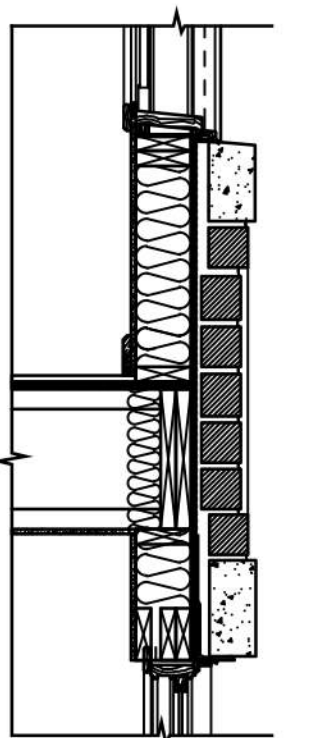
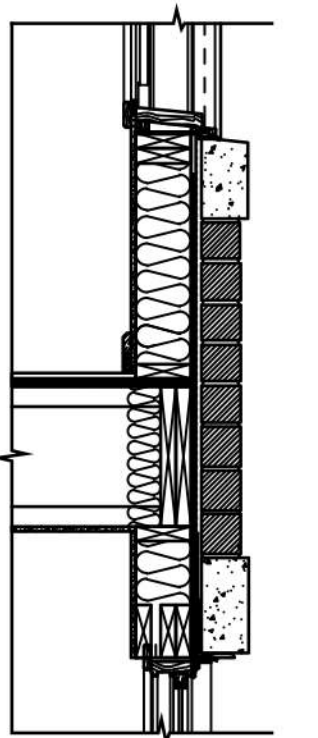
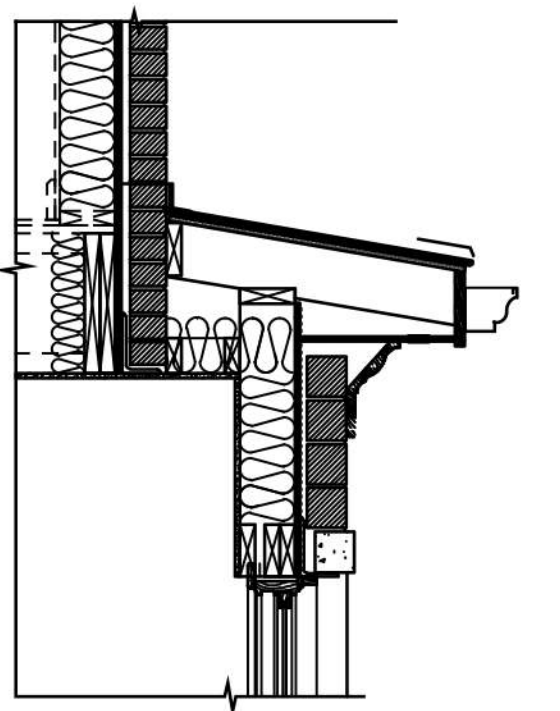


PLEASANT STREET

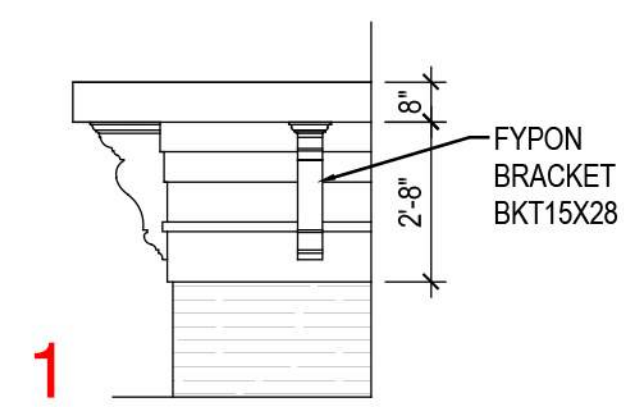


BANK OF AMERICA VIEW

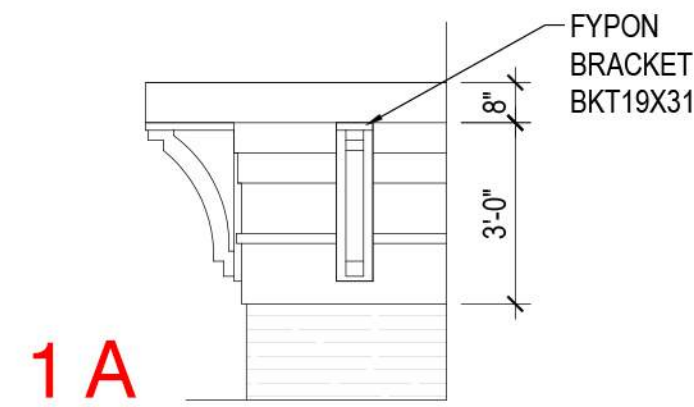
PROPOSED BAY DETAILS



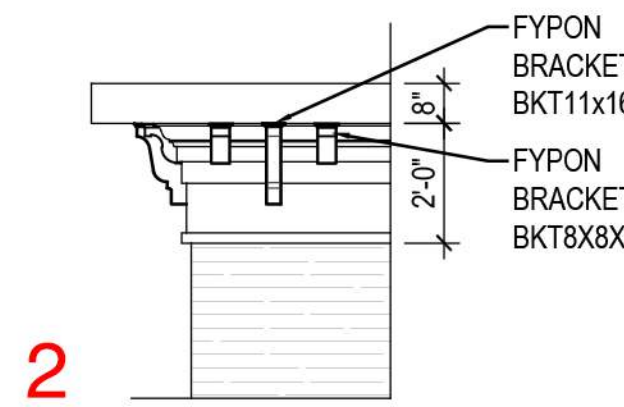
PROPOSED CORNICE PROFILES



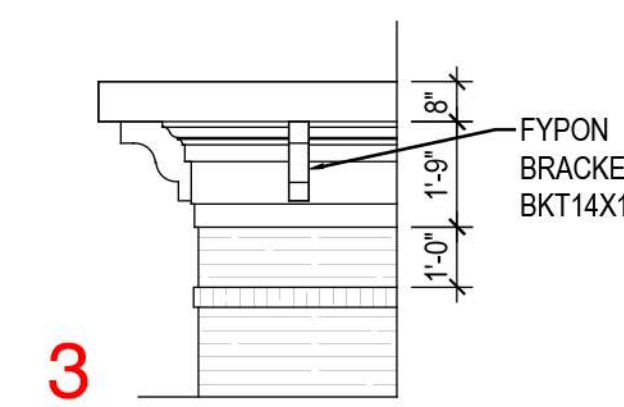
1



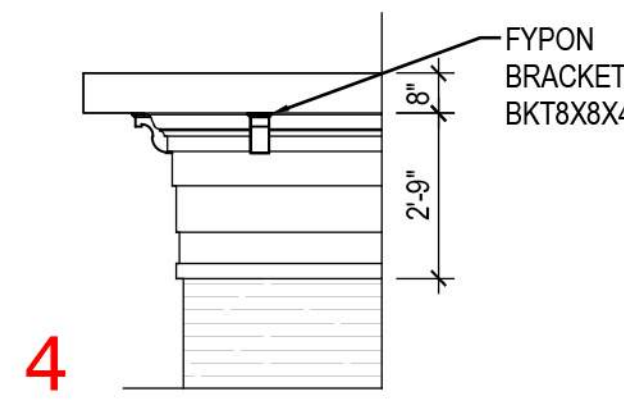
1A



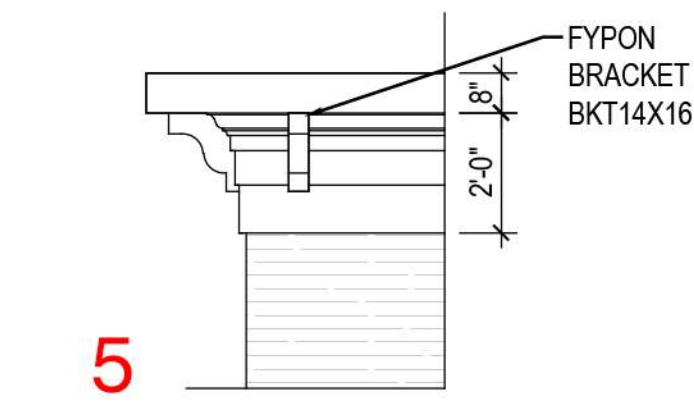
2



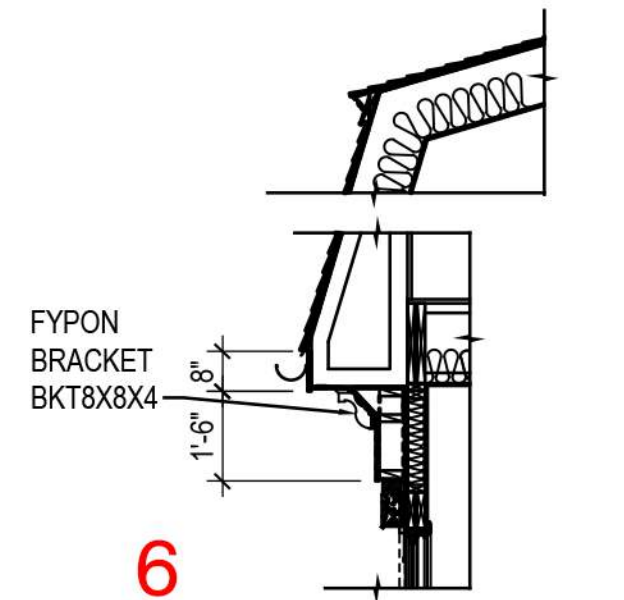
3



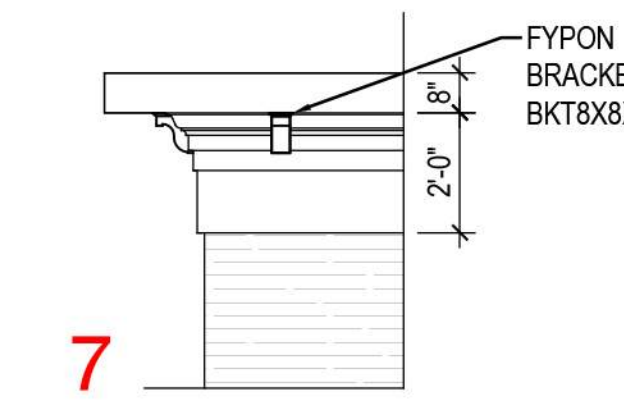
4



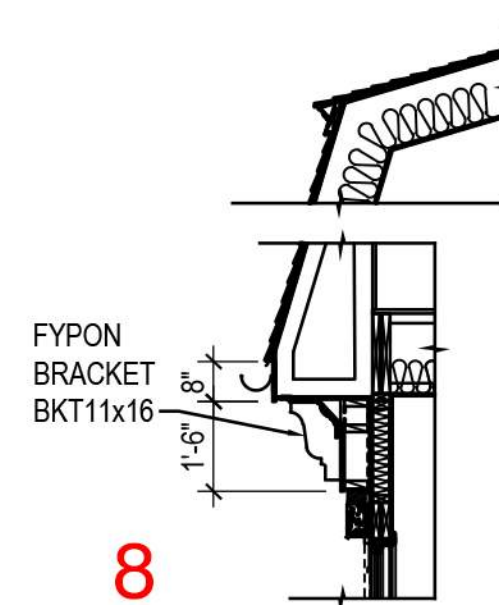
5



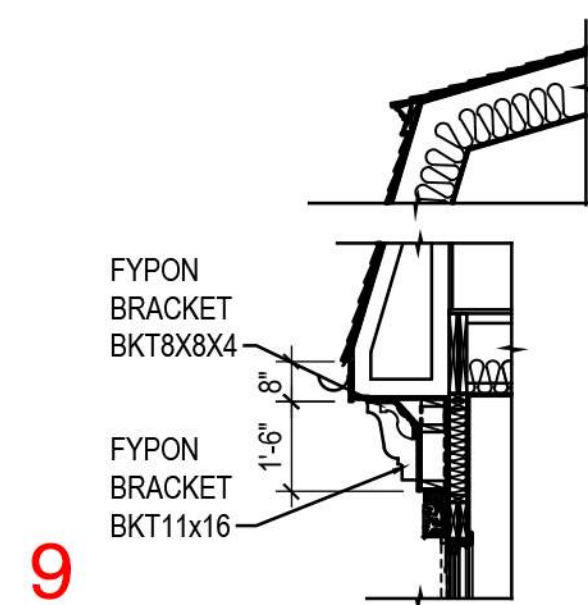
6



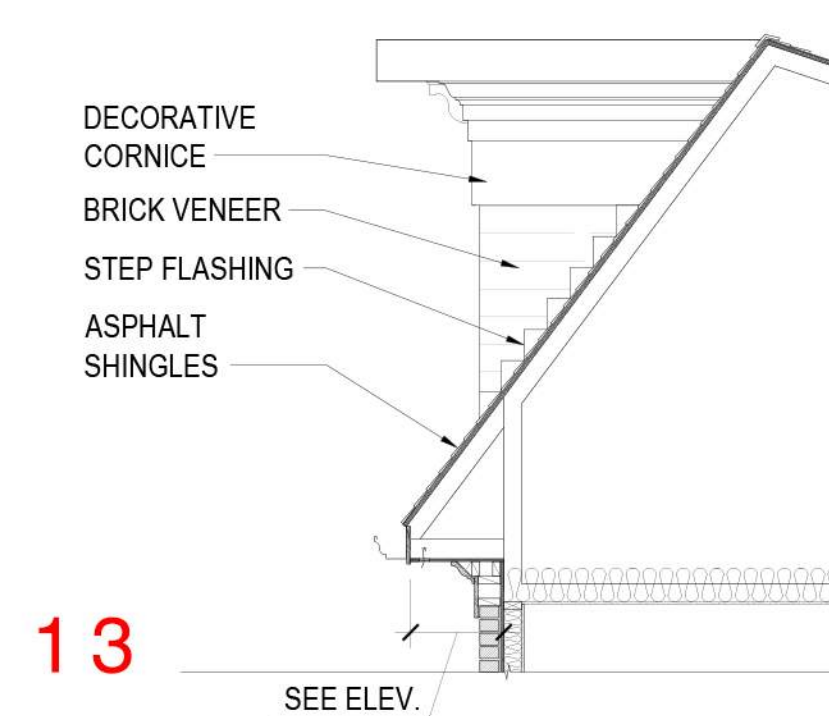
7



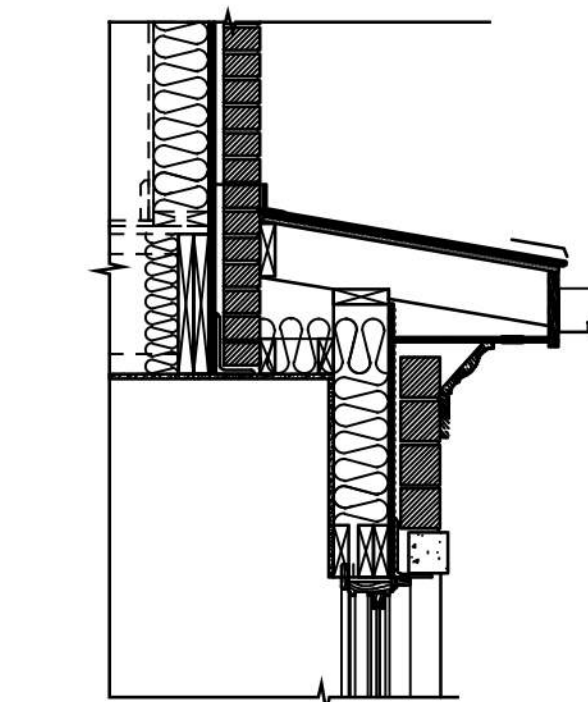
8



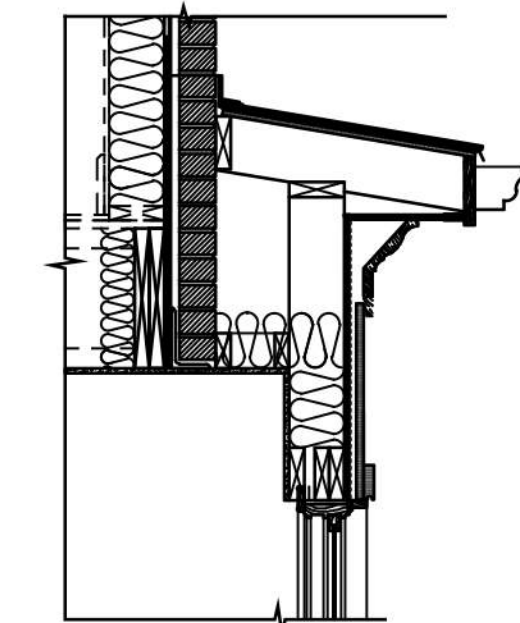
9



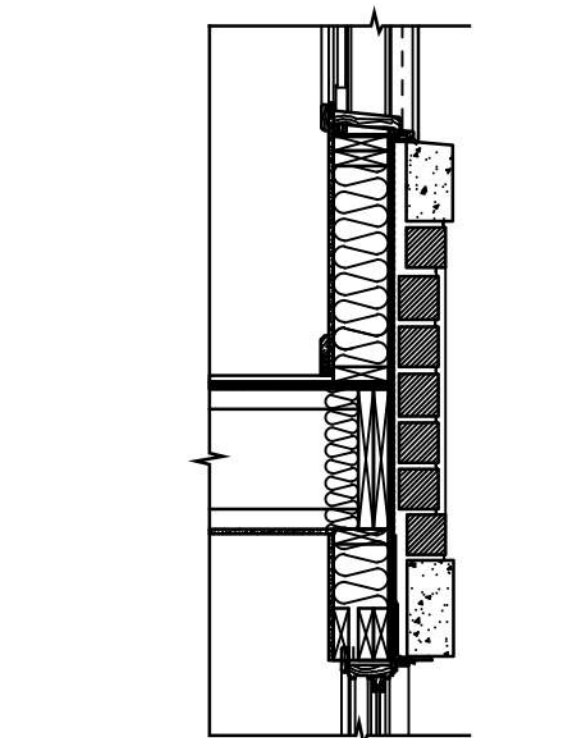
13



10



11



12



MAPLE AVE.



PLEASANT STREET

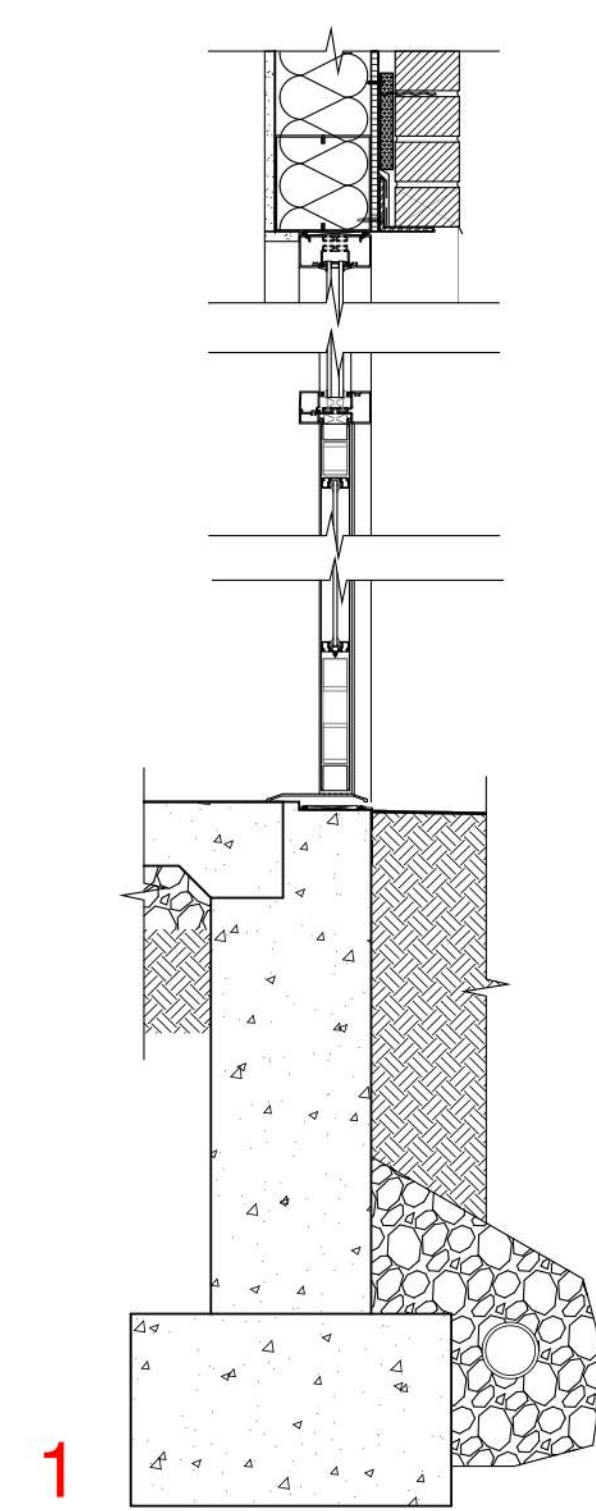


BANK OF AMERICA VIEW

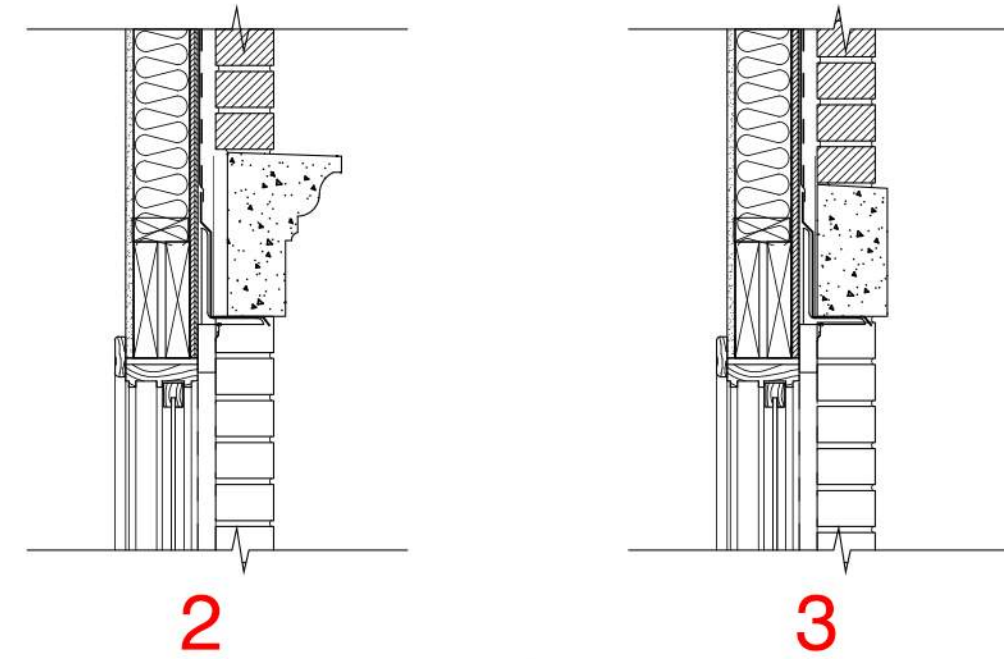
PROPOSED ENTRY DETAILS

PROPOSED WINDOW SECTIONS

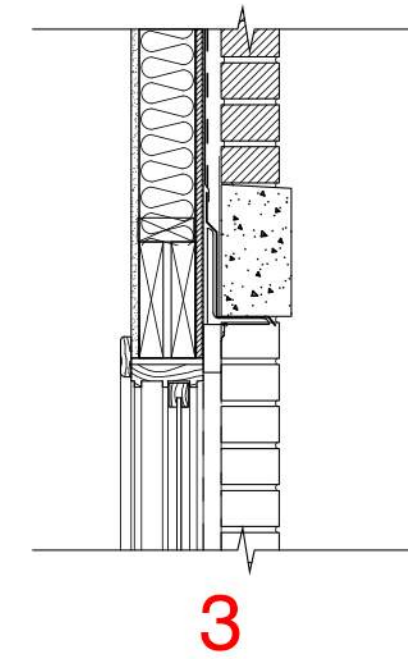
PROPOSED WALL SECTION DETAILS



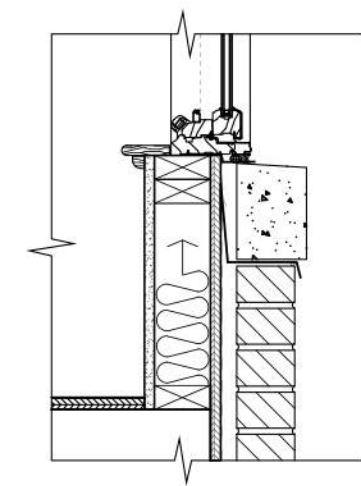
1



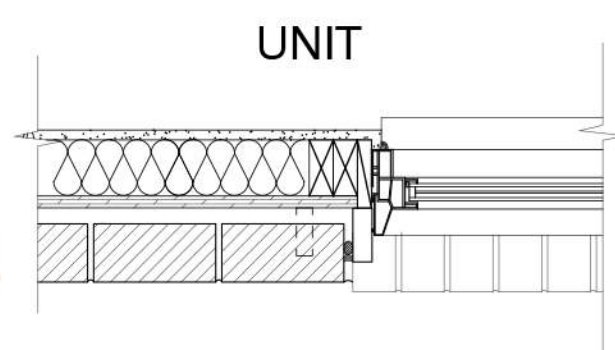
2



3

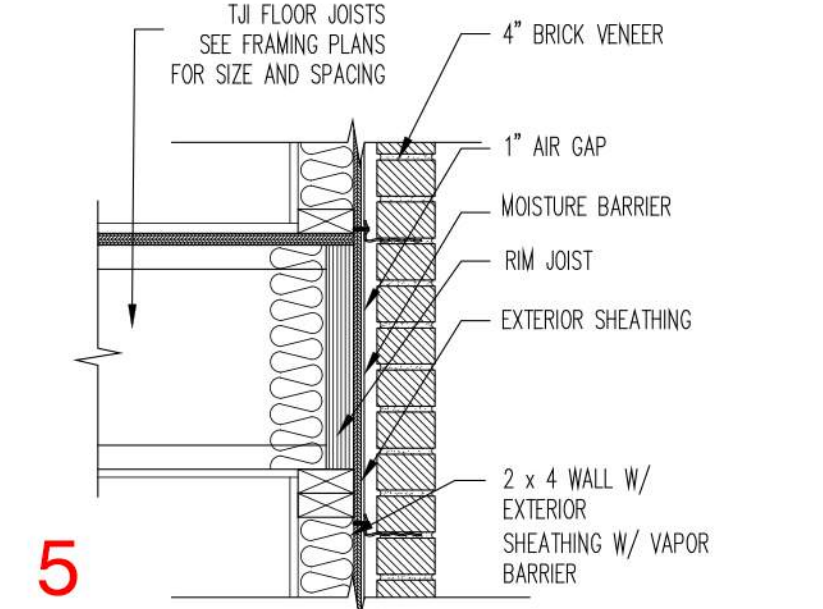


4

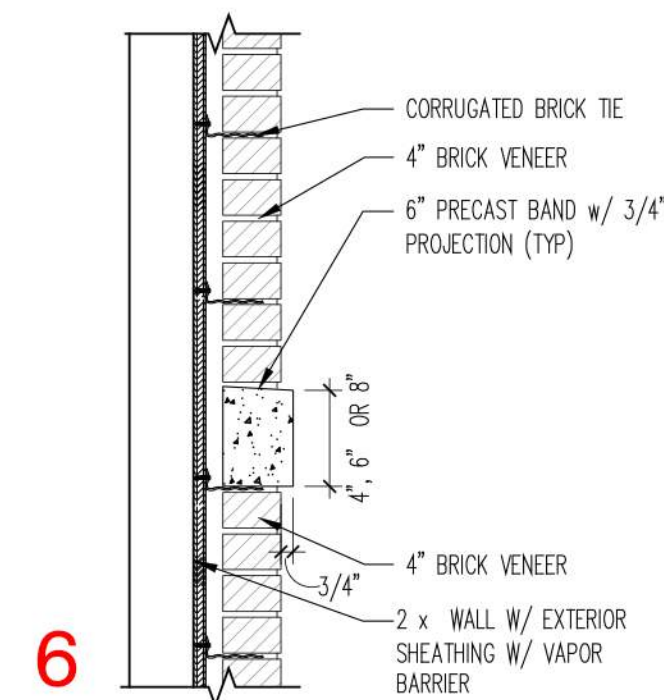


UNIT

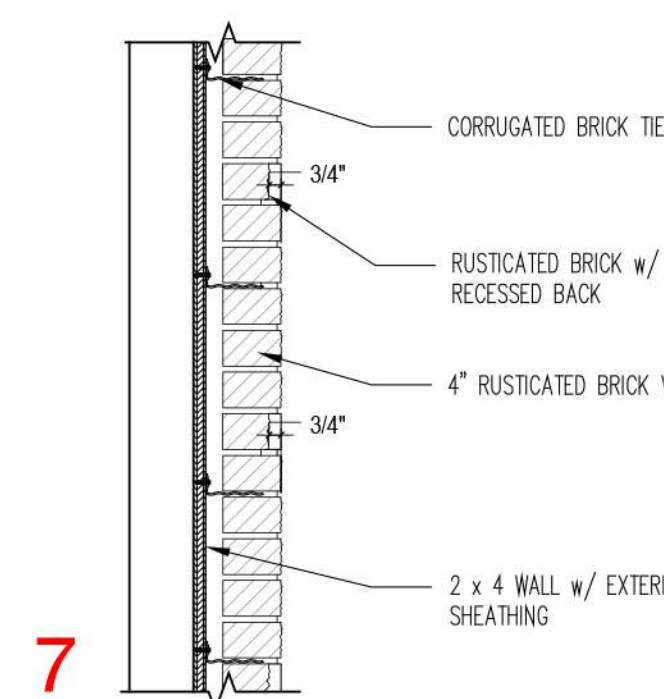
EXTERIOR



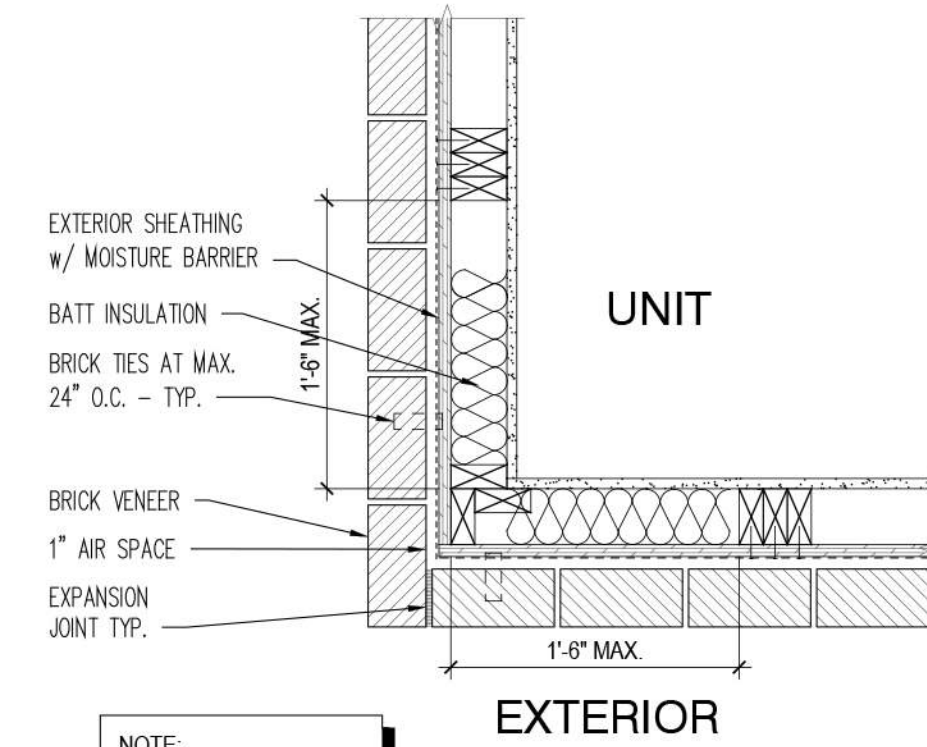
5



6



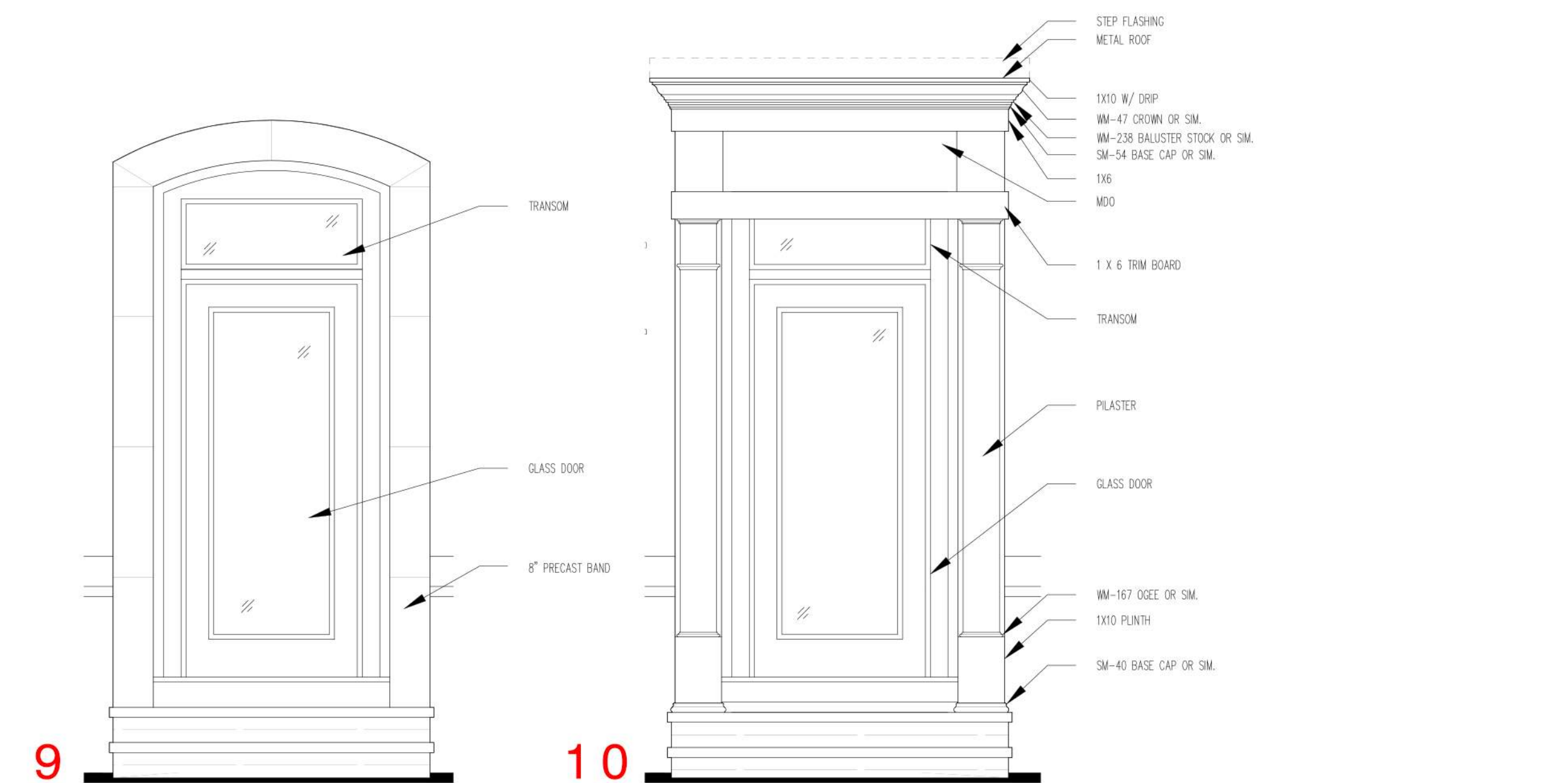
7



8

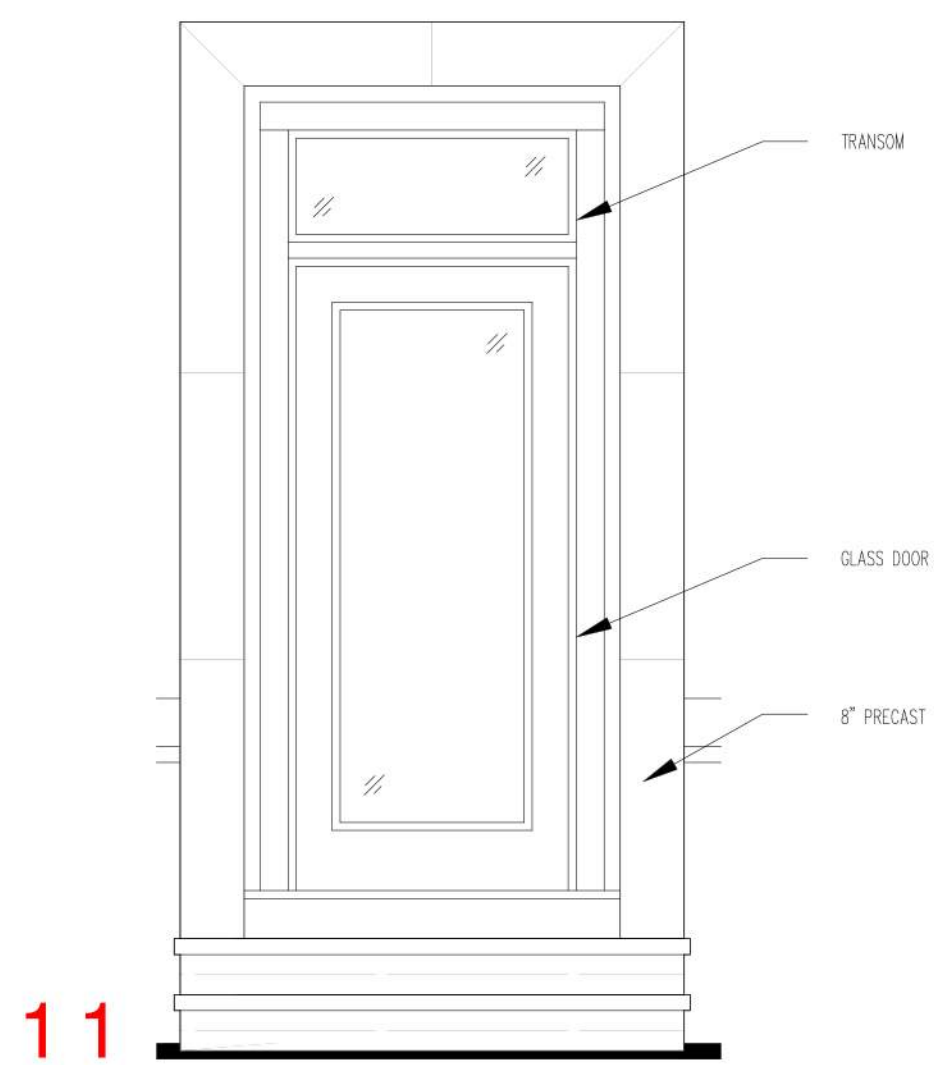


RUSTICATED BRICK EXAMPLE

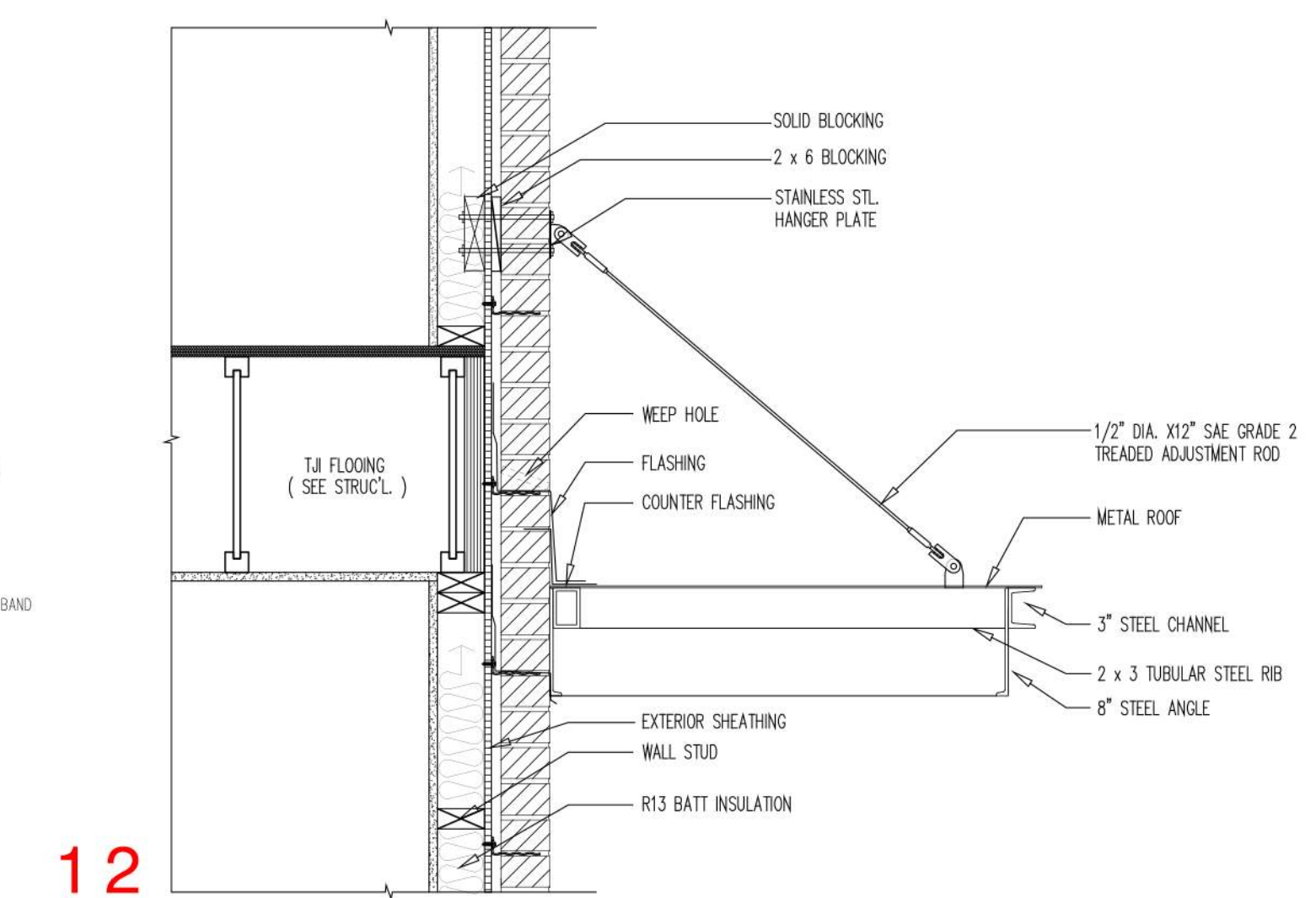


9

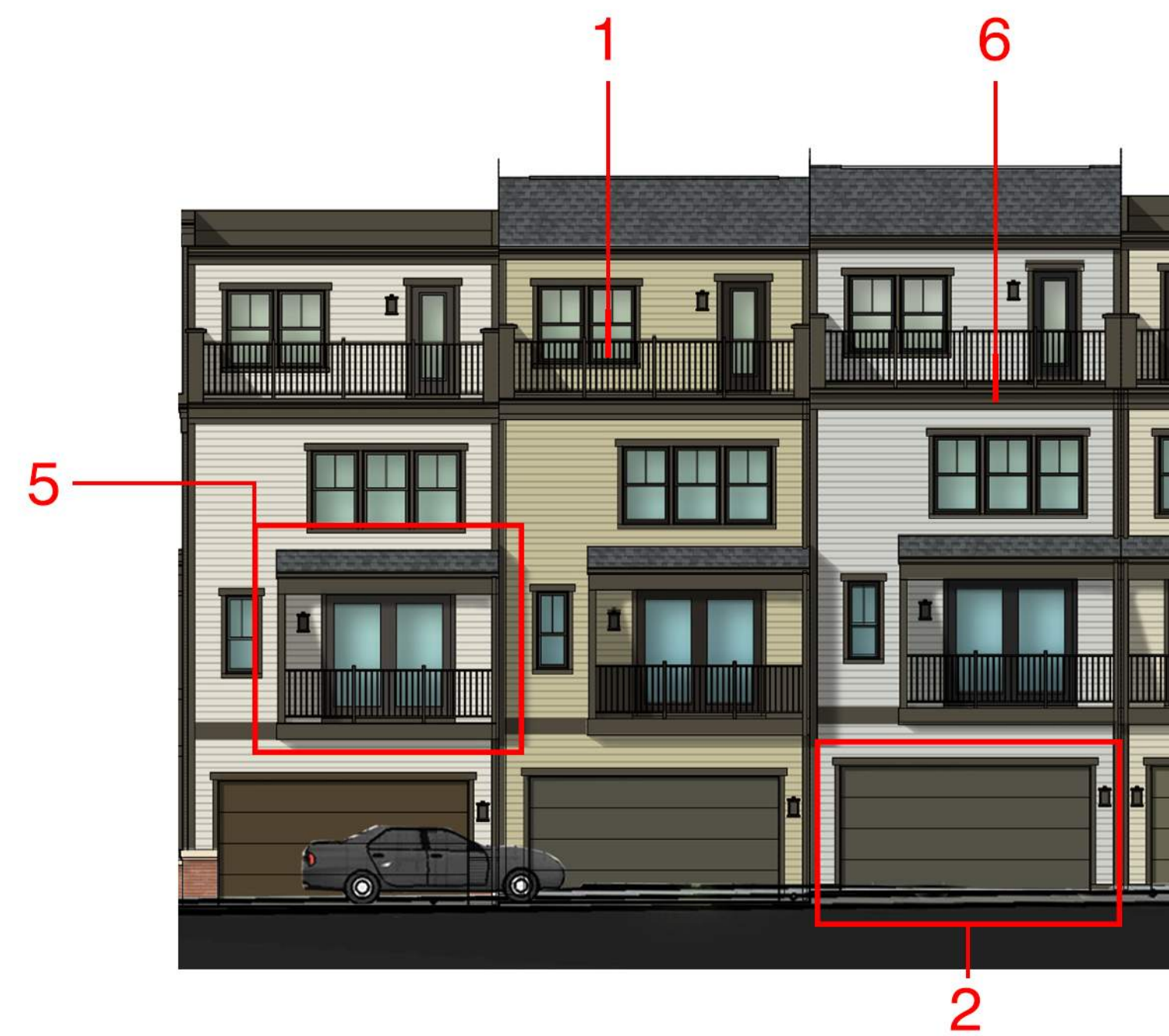
10



11



12



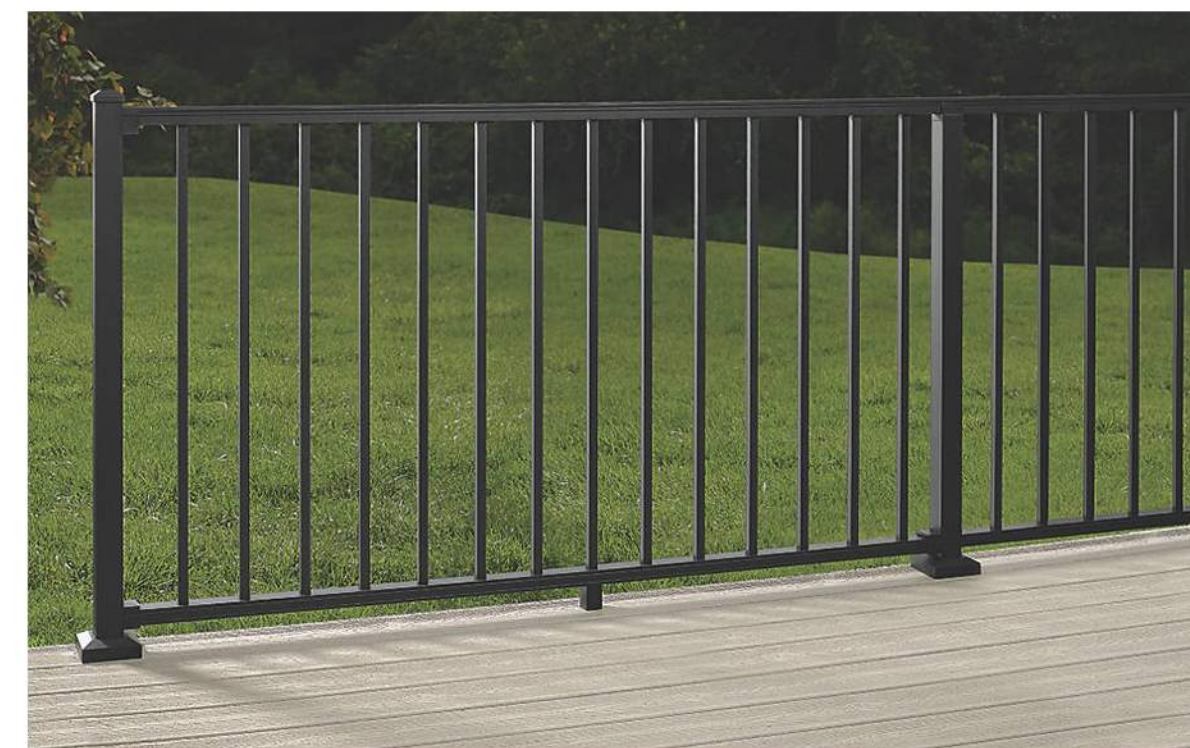
BANK OF AMERICA VIEW



MAPLE AVE.



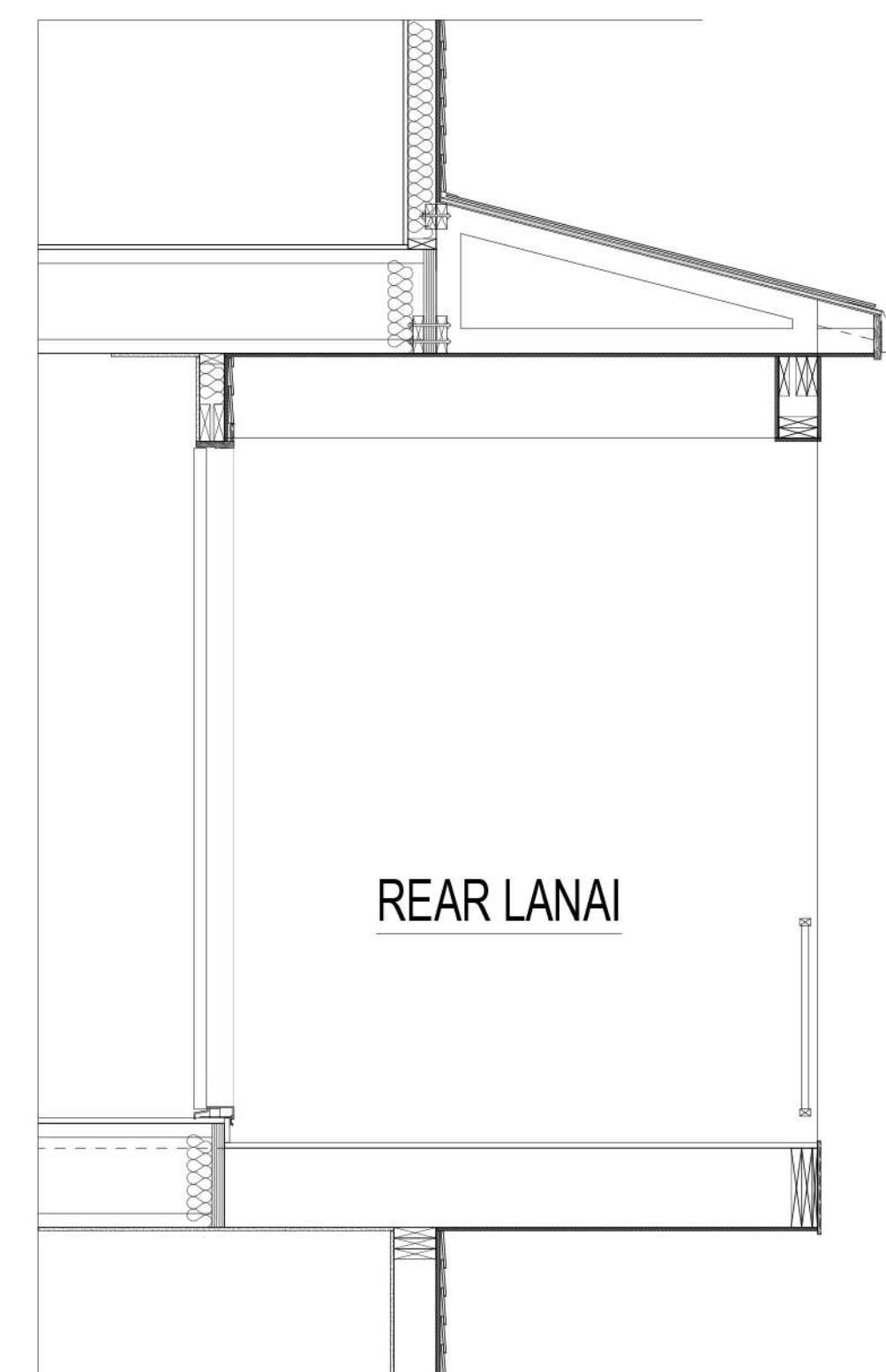
7. RETAINING WALL
VERTICA - DAKOTA BLEND



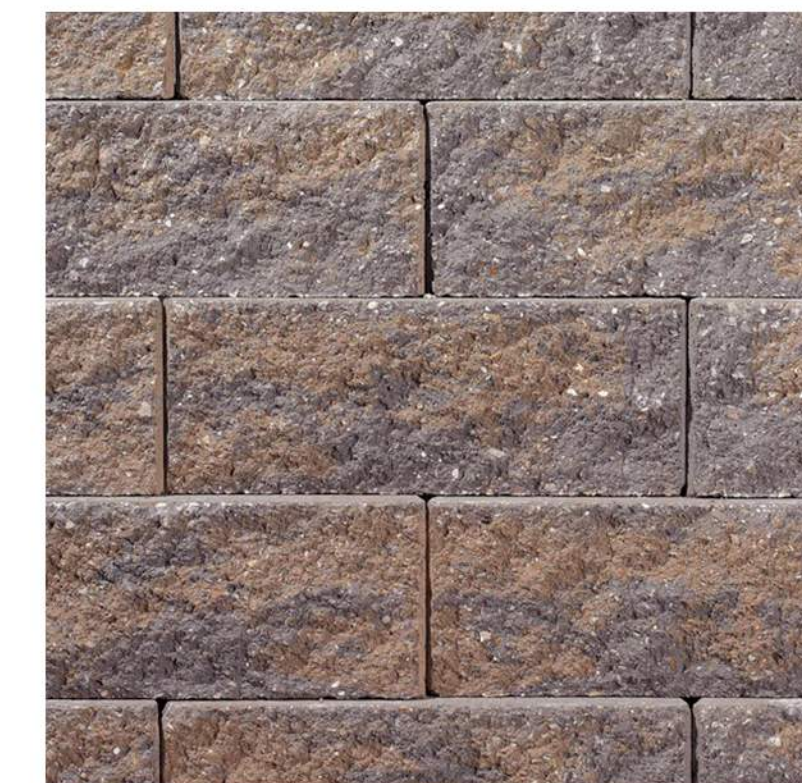
1. TREX SIGNATURE
ALUMINUM RAILING
- BLACK



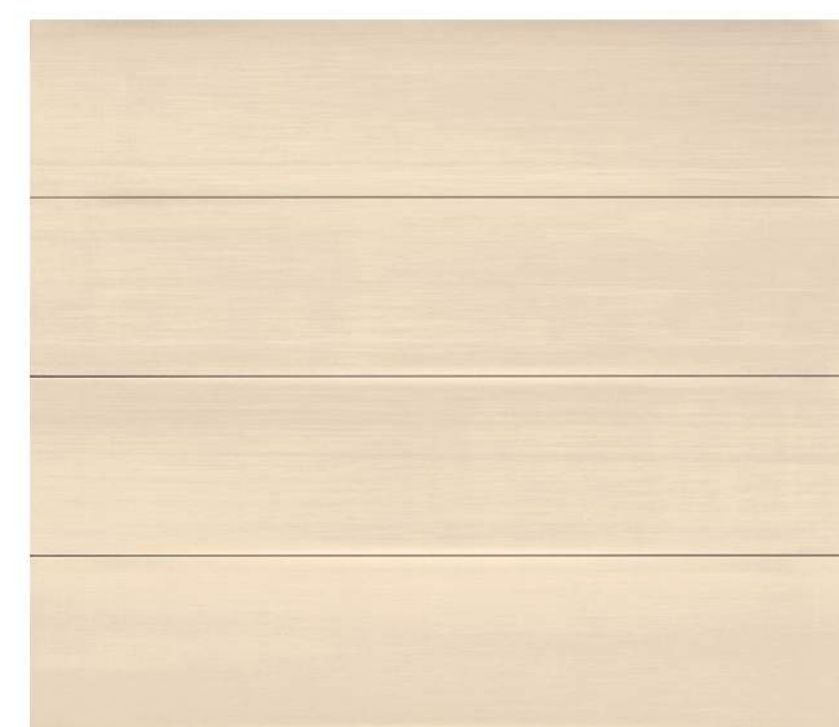
3. POWDER COATED
ALUMINUM RAILING
- BLACK



5



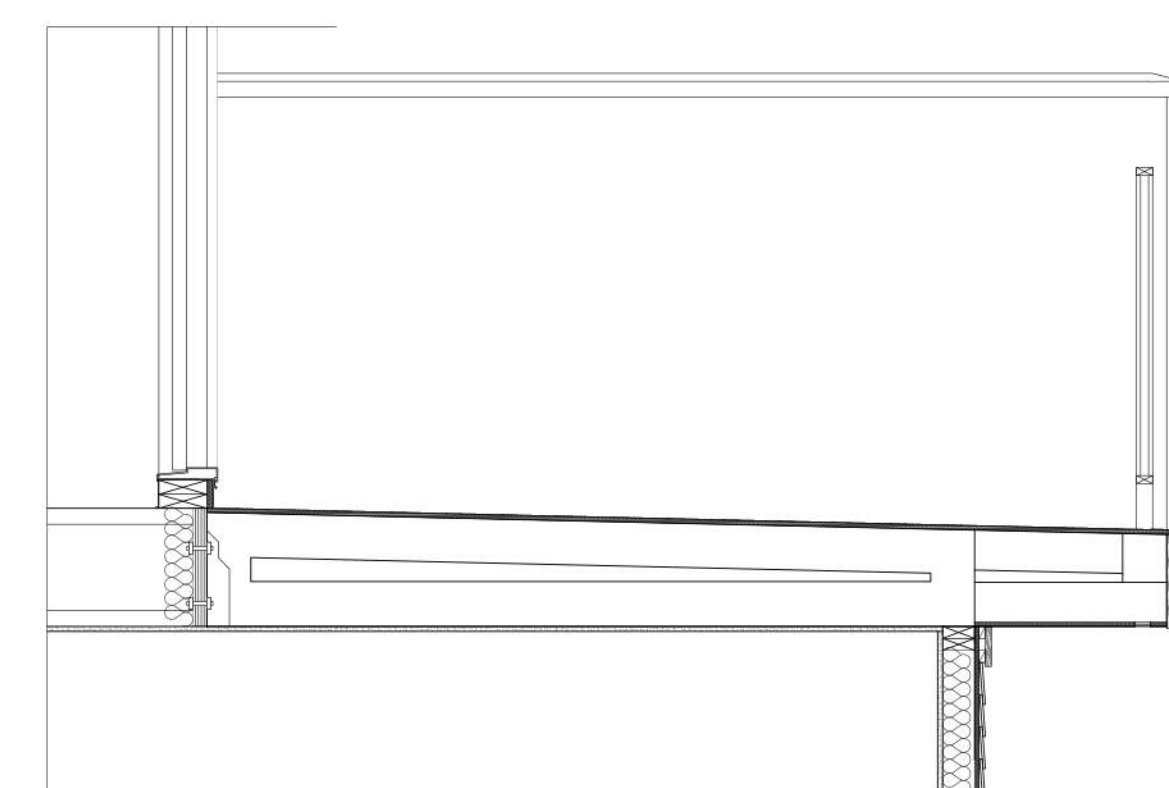
8. PRECAST CAP
WARM PRECAST COLOR



2. AMARR LINCOLN
FLUSH PANEL
GARAGE DOOR



4. PLYGEM 2100 SERIES
-BRONZE



6



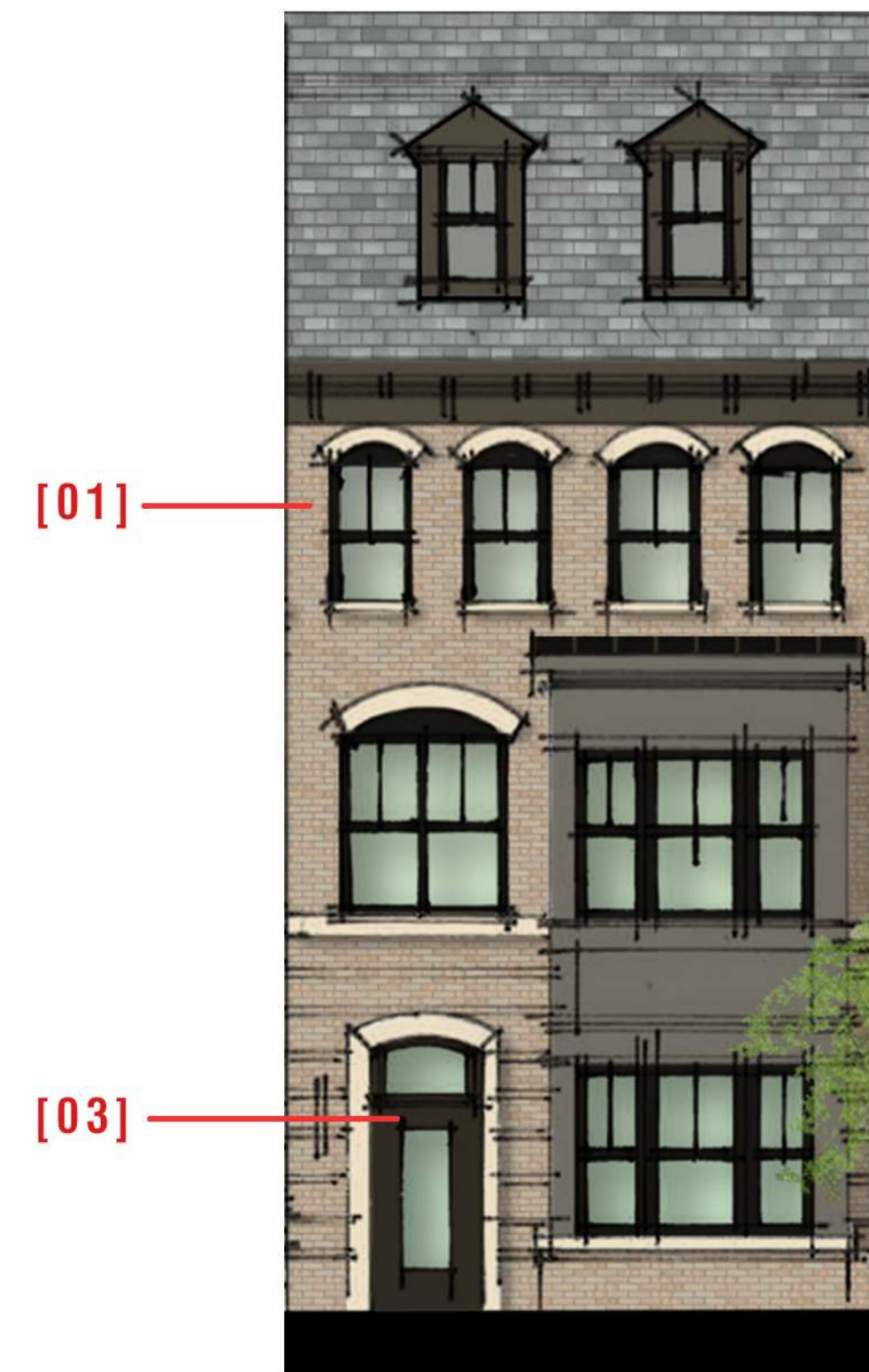




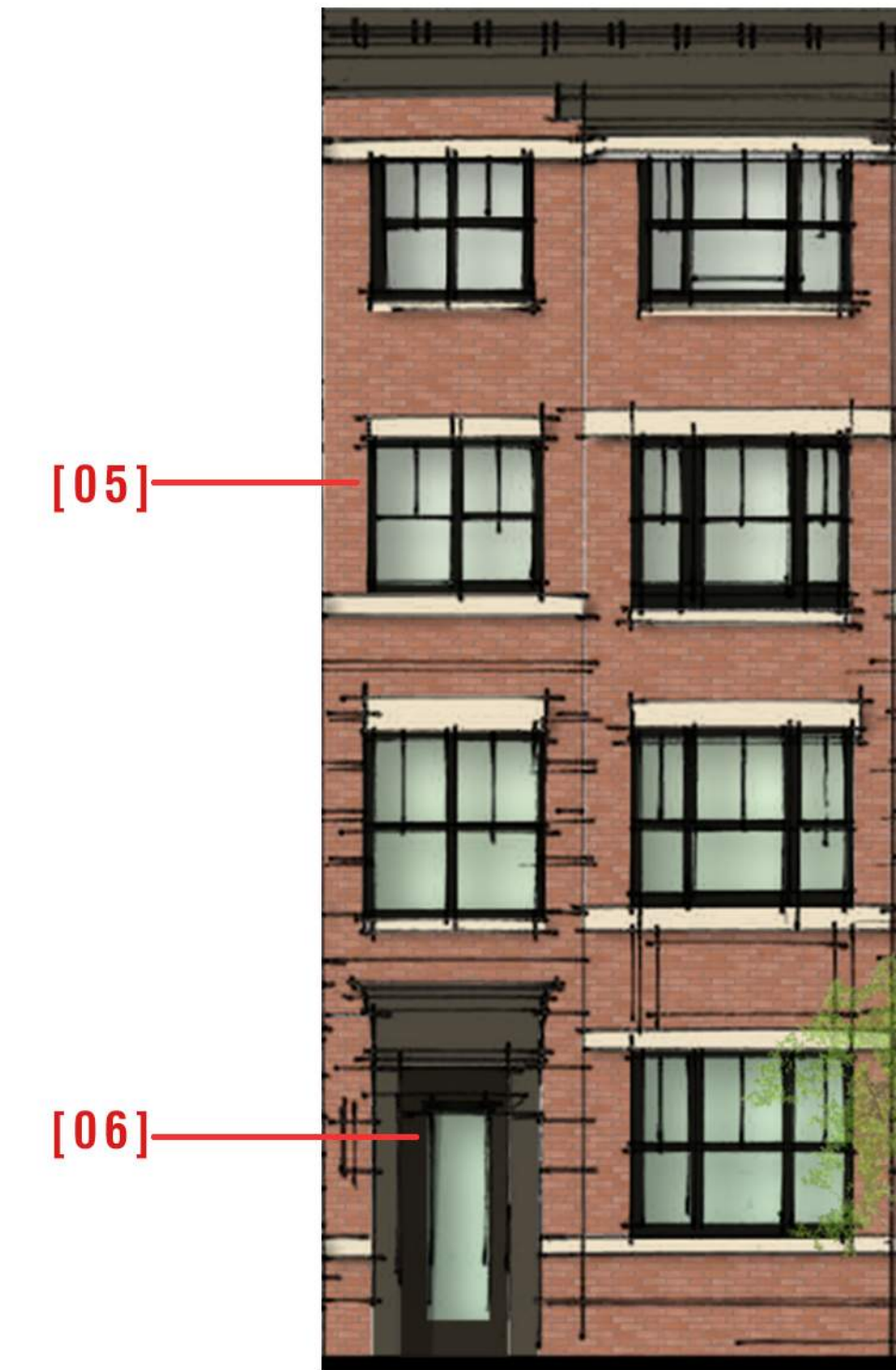




SCHEME #1

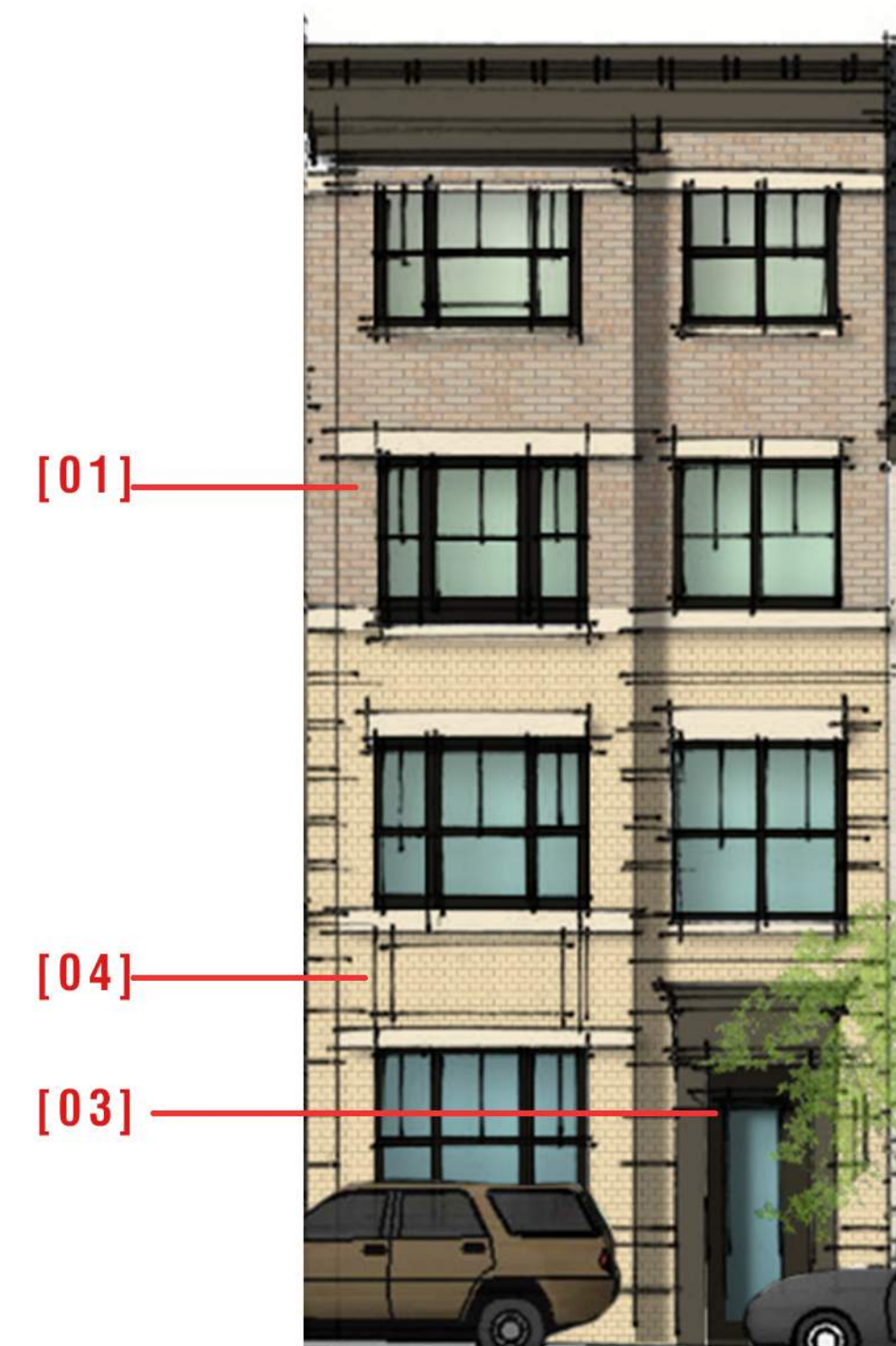


SCHEME #1



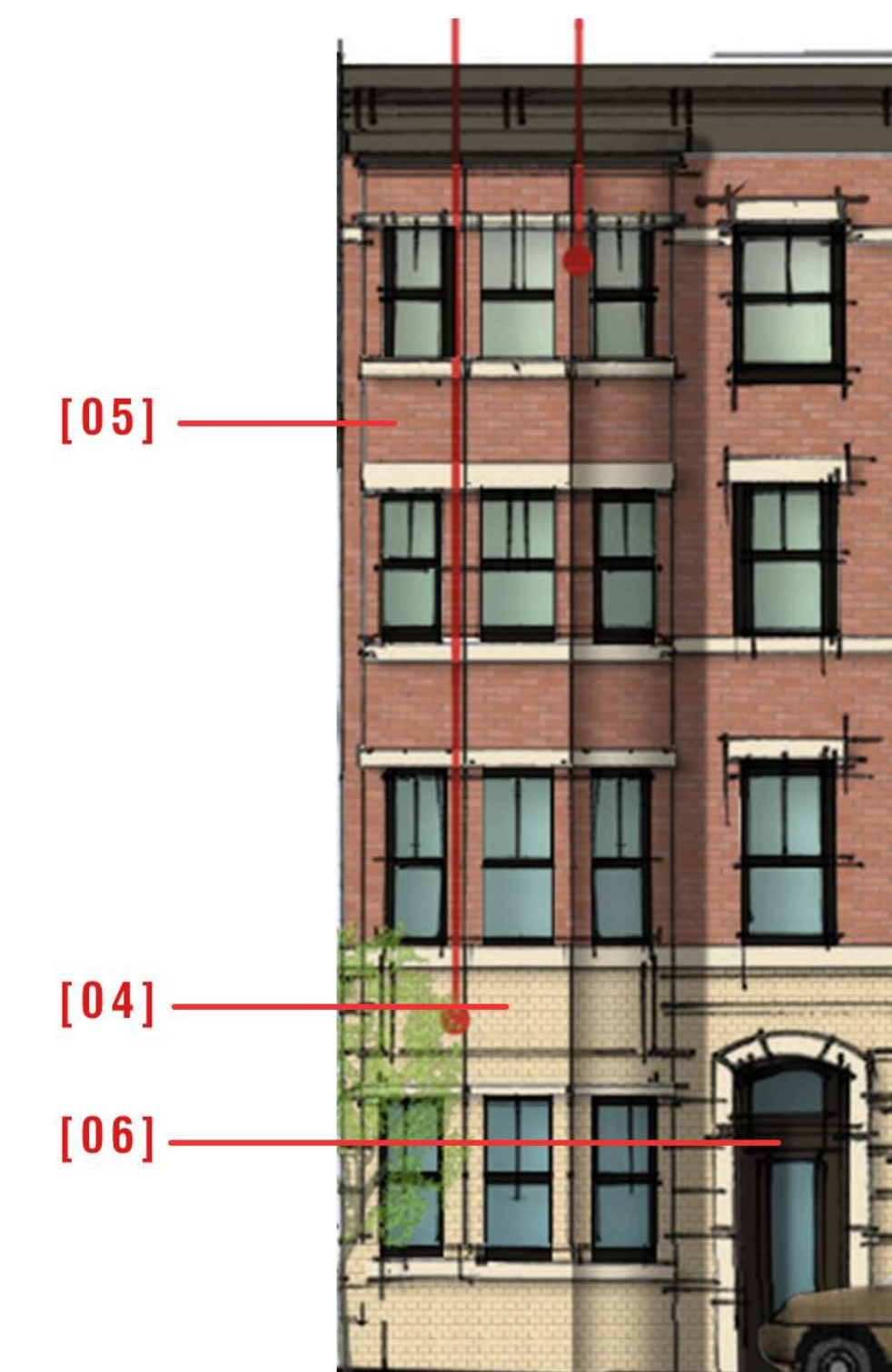
SCHEME #2

SCHEME #2



SCHEME #1B

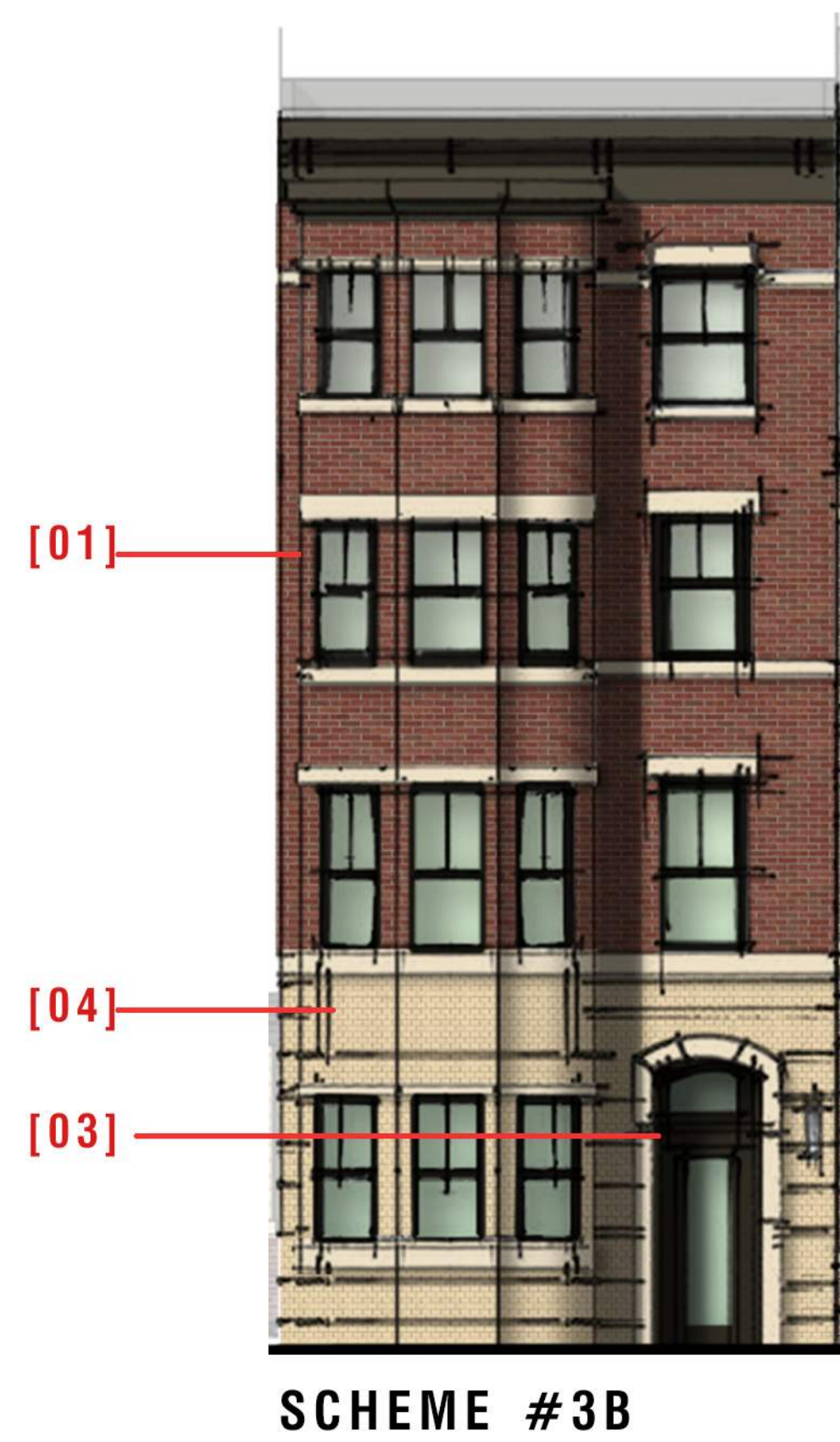
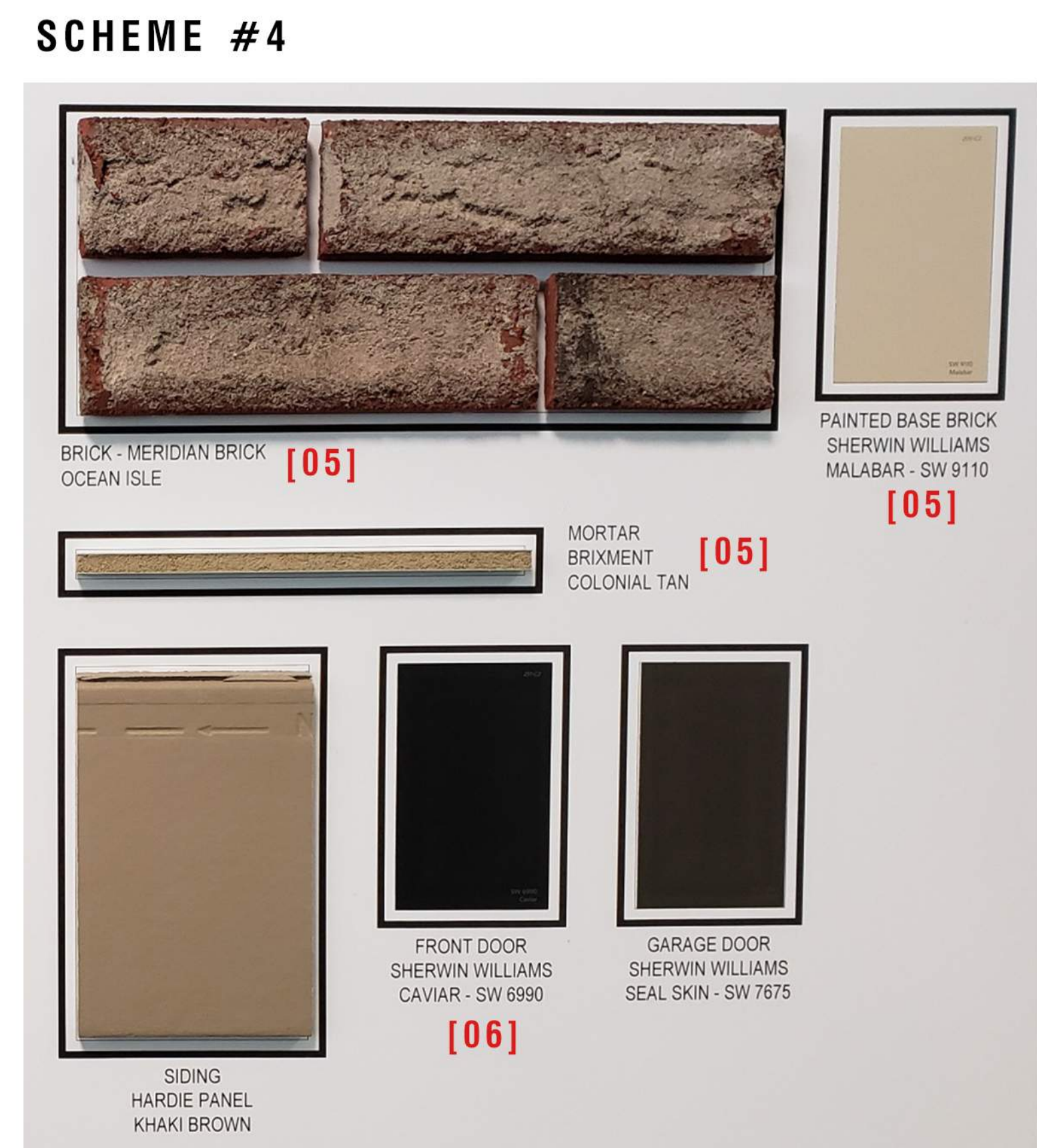
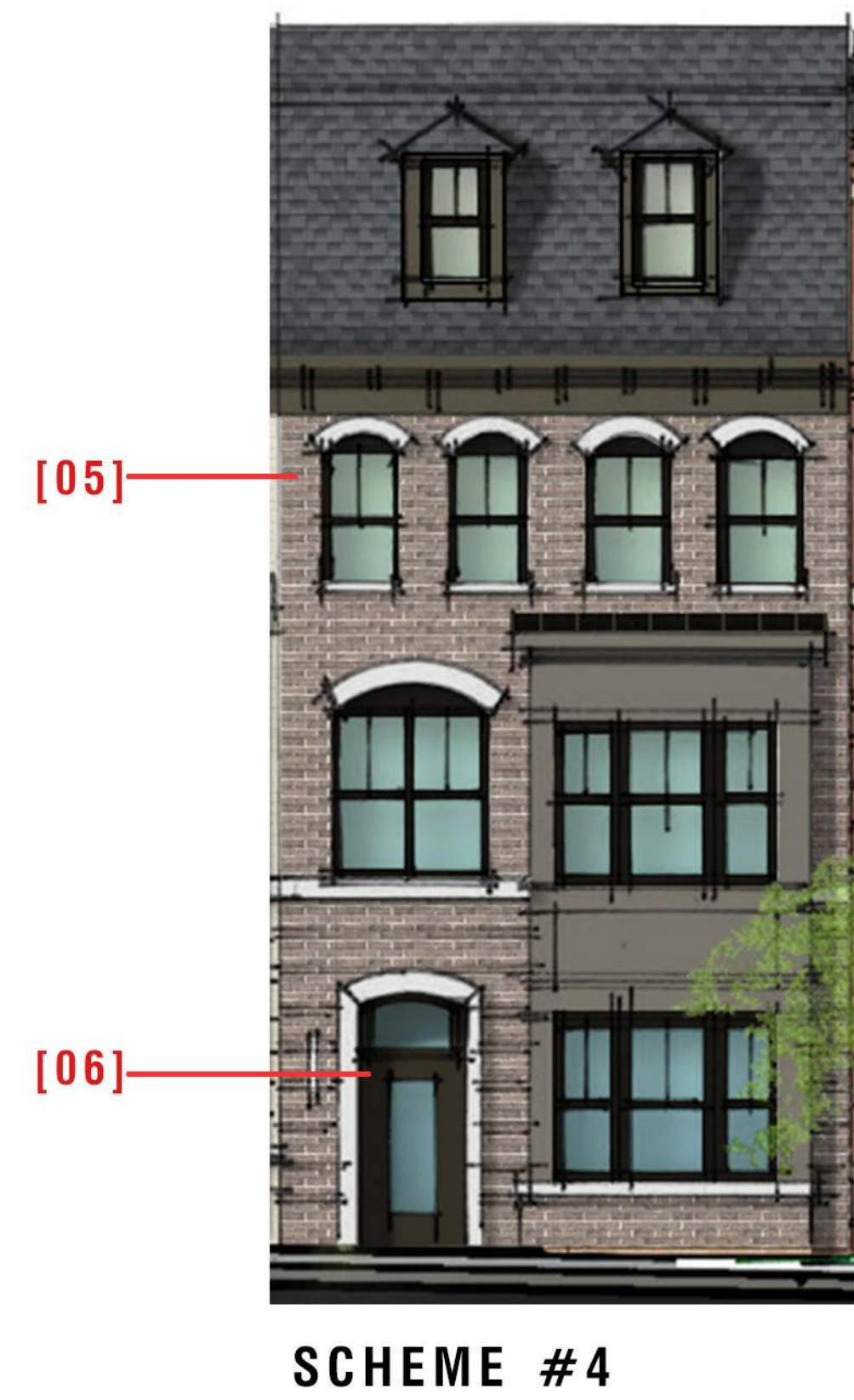
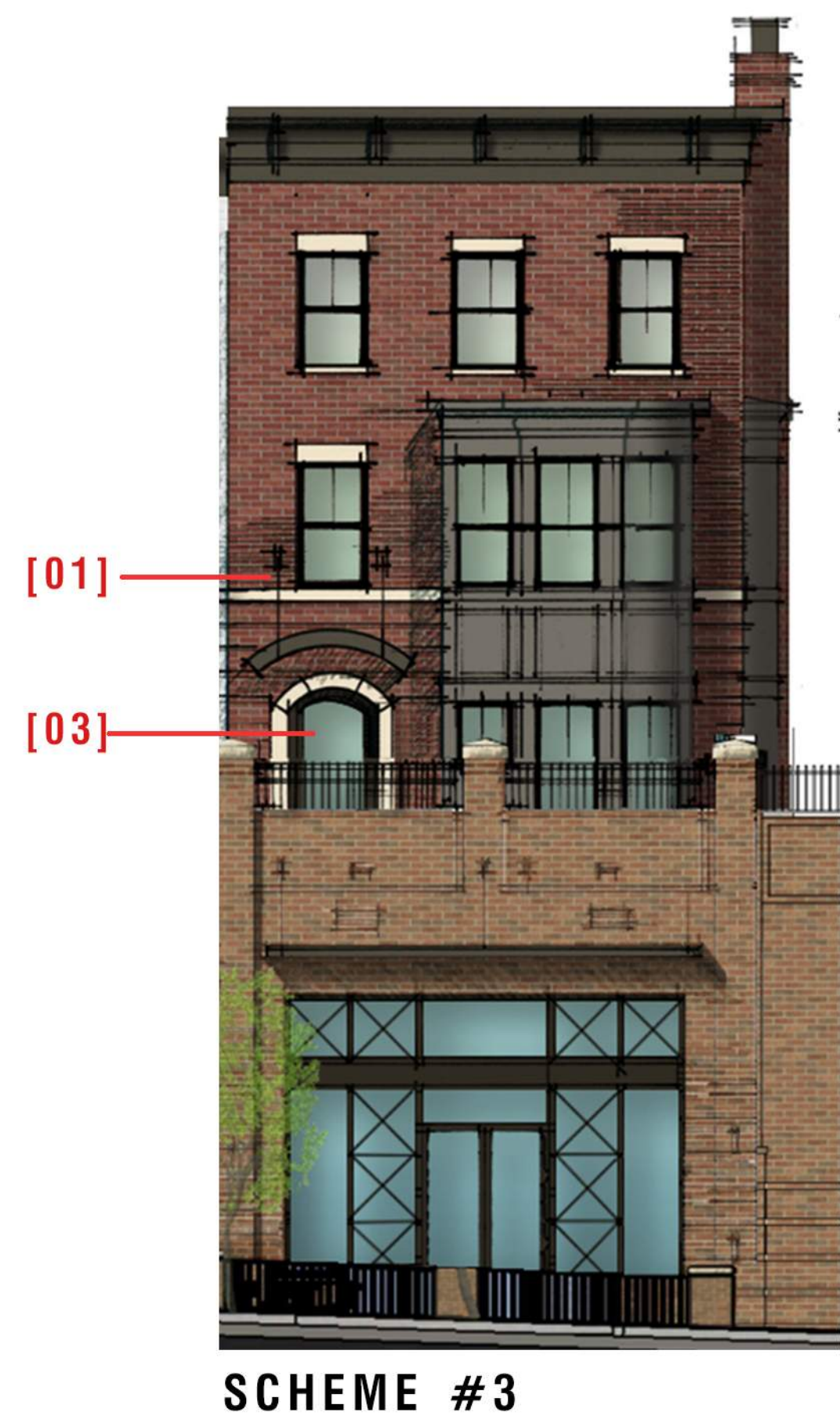
SCHEME #1B (BASE BRICK)



SCHEME #2B

SCHEME #2B (BASE BRICK)





SCHEME #5



SCHEME #5

PAINTED BRICK
SHERWIN WILLIAMS
ORIGAMI WHITE - SW 7636 [01]

PAINTED BRICK COLOR
SHERWIN WILLIAMS
ORIGAMI WHITE - SW 7636 [01]

MORTAR
BRIXMENT
COLONIAL TAN [01]

FRONT DOOR
SHERWIN WILLIAMS
PEPPERCORN - SW 7674 [03]

GARAGE DOOR
SHERWIN WILLIAMS
DARK CLOVE - SW 9183

SIDING
HARDIE PANEL
ARTIC WHITE



SCHEME #6

BRICK PAINT
SHERWIN WILLIAMS
DOVER WHITE - SW 6385 [05]

PAINTED BRICK COLOR
SHERWIN WILLIAMS
DOVER WHITE - SW 6385 [05]

MORTAR
BRIXMENT
COLONIAL TAN [05]

FRONT DOOR
SHERWIN WILLIAMS
PEPPERCORN - SW 7674 [06]

GARAGE DOOR
SHERWIN WILLIAMS
DARK CLOVE - SW 9183

SIDING
HARDIE PANEL
SAIL CLOTH