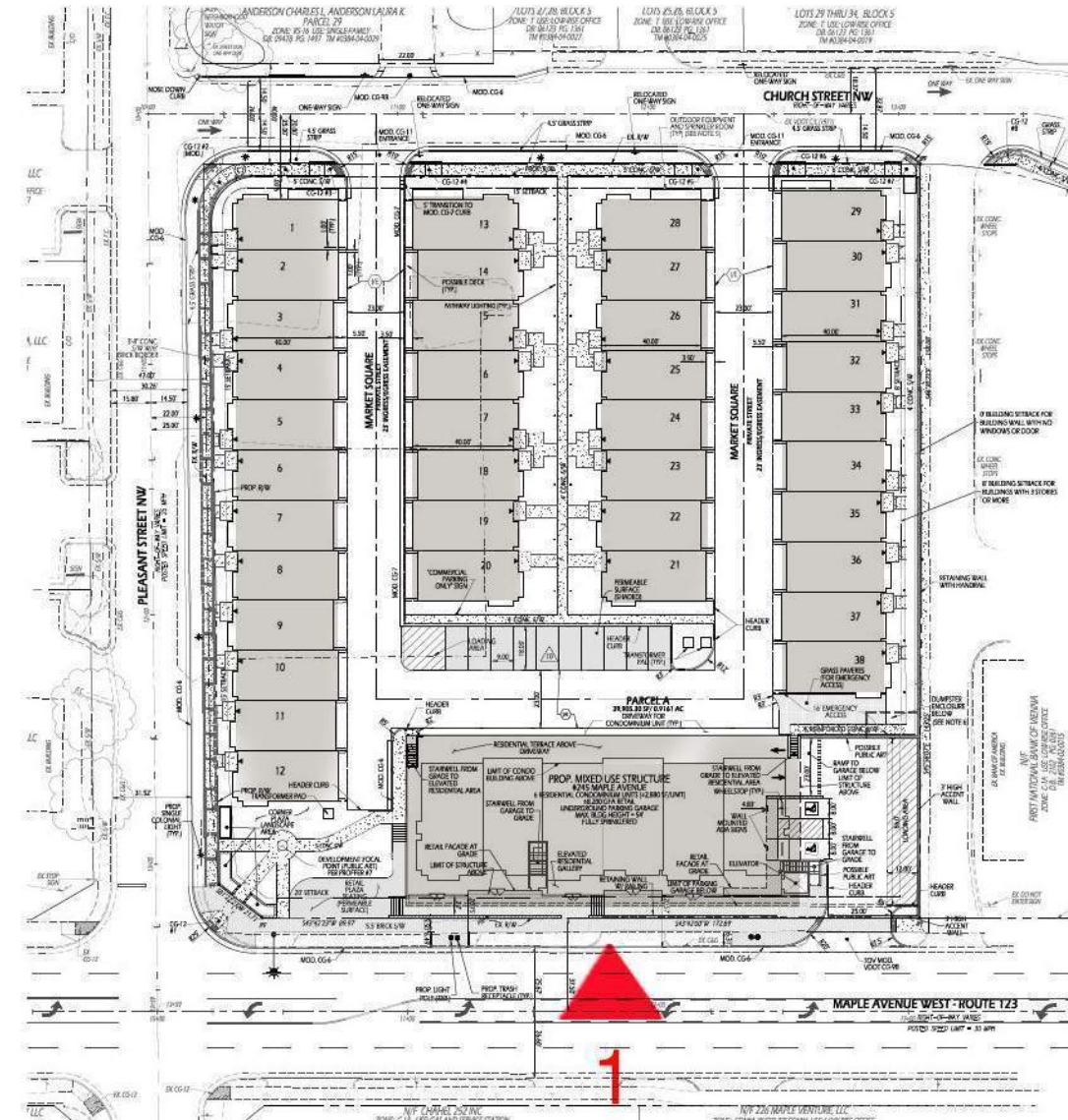
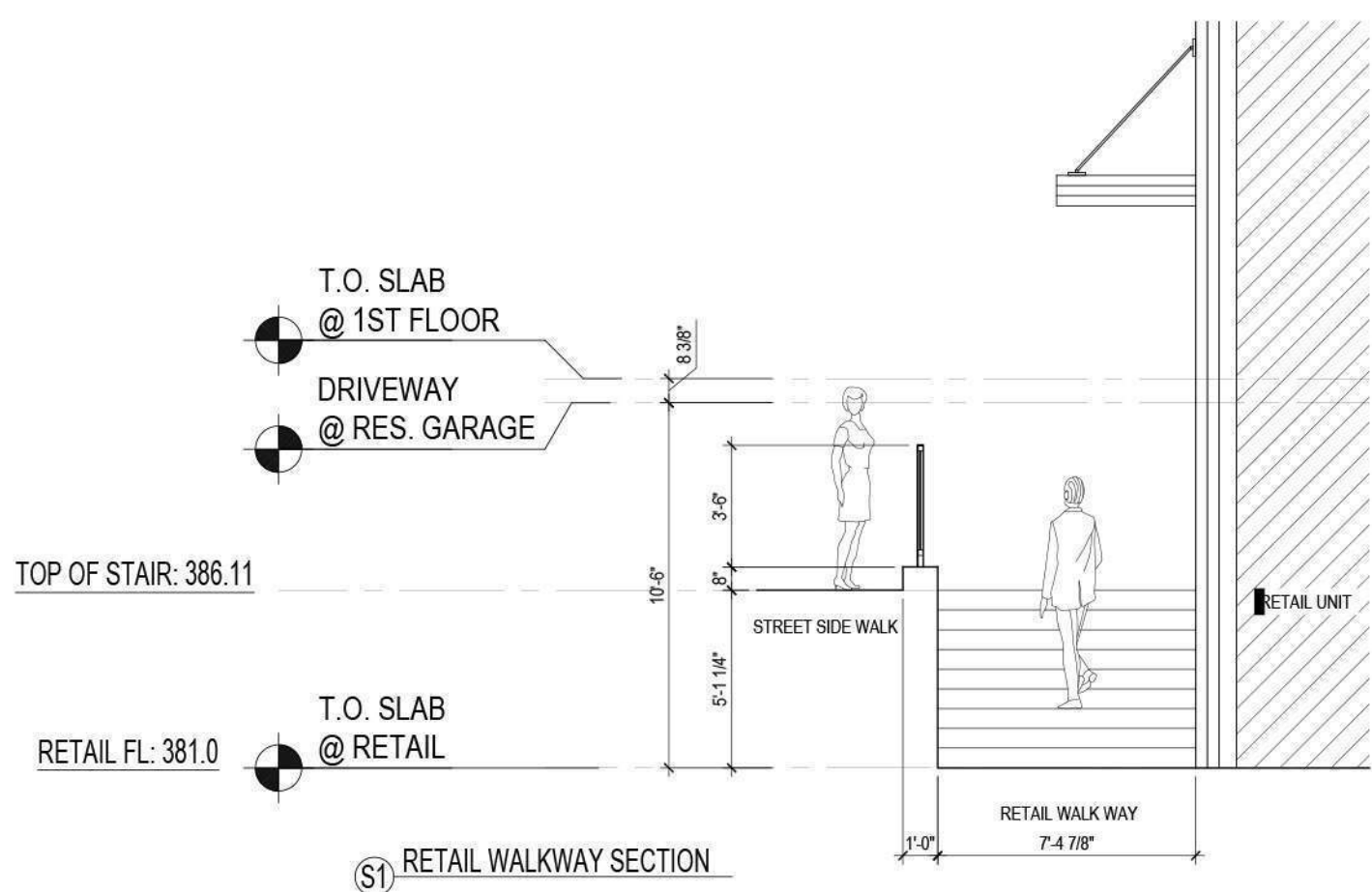


NEW WINDOWS
BRICK
RUSTICATION
NEW WINDOWS

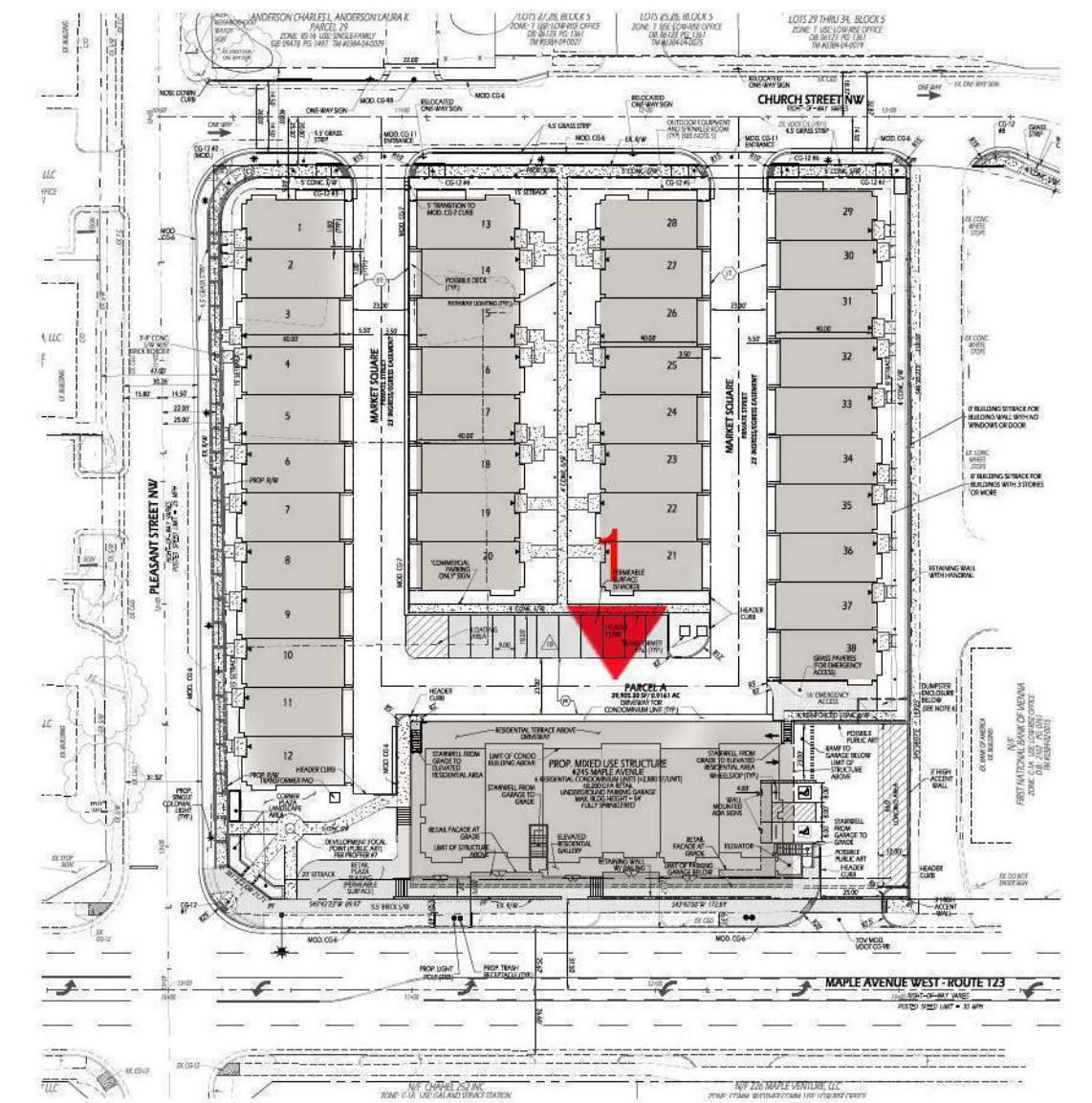
ARCHED PARAPET
STORE FRONT
DESIGN
BRICK
RUSTICATION



1. MAPLE AVENUE - PROPOSED



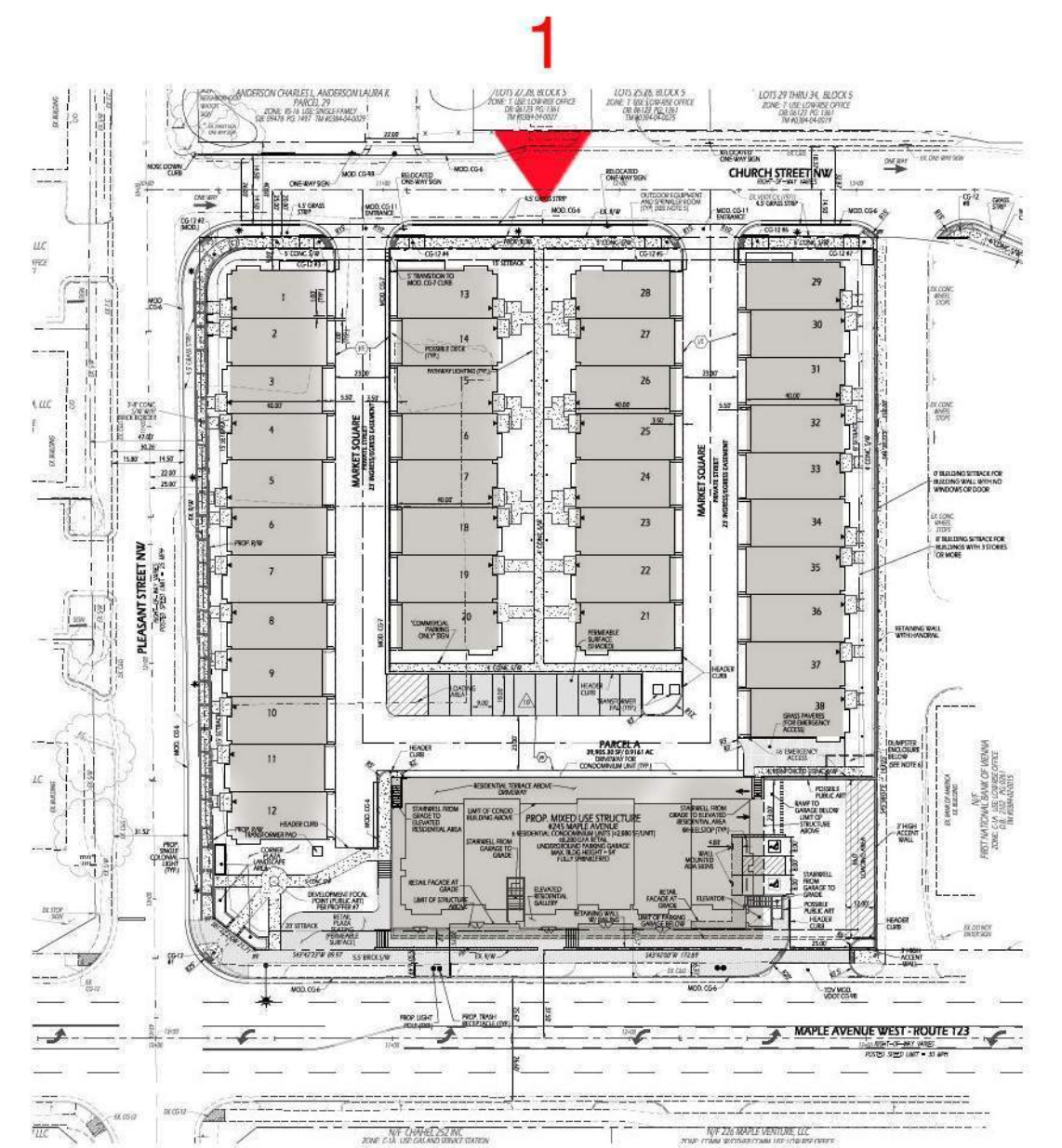
NOTE: LOCATION OF FUTURE ART WORK



KEY PLAN



1. REAR MAPLE AVENUE - PROPOSED

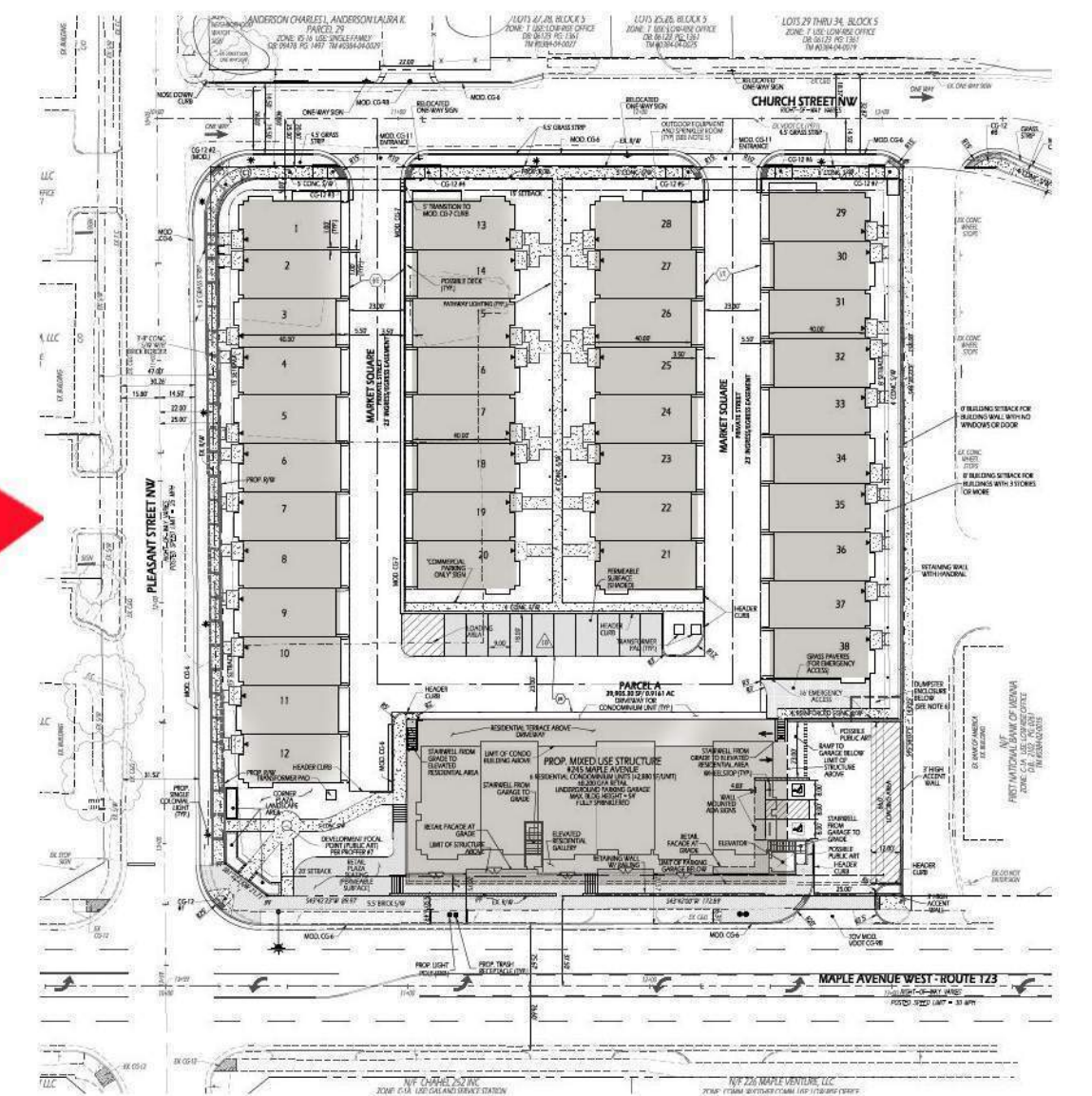


KEY PLAN



1. CHURCH STREET - PROPOSED

1

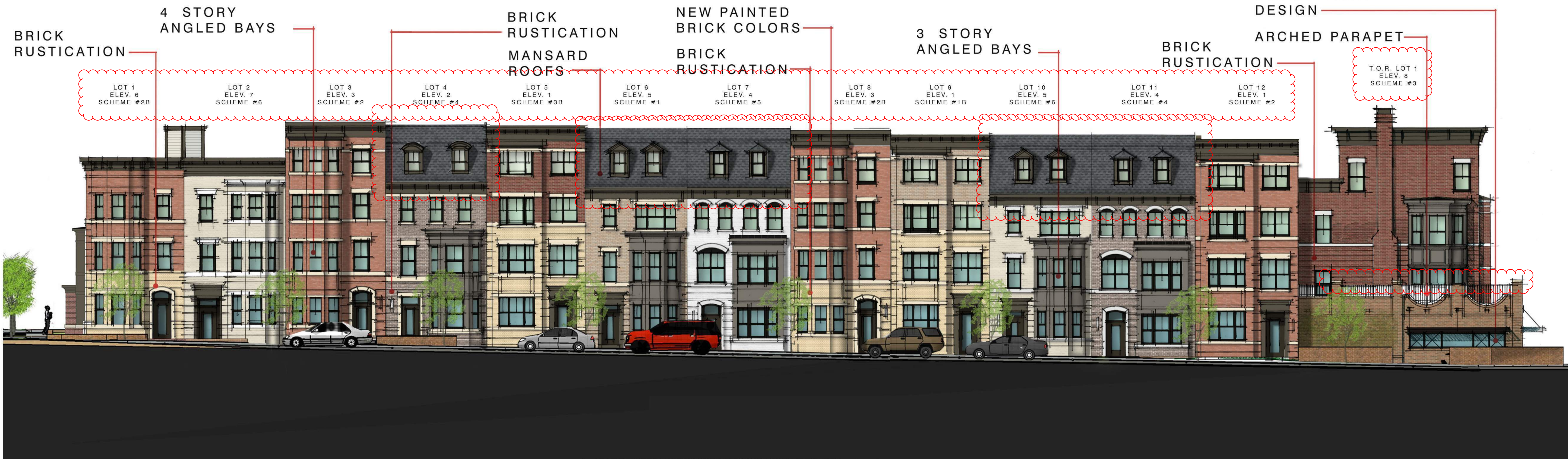


KEY PLAN

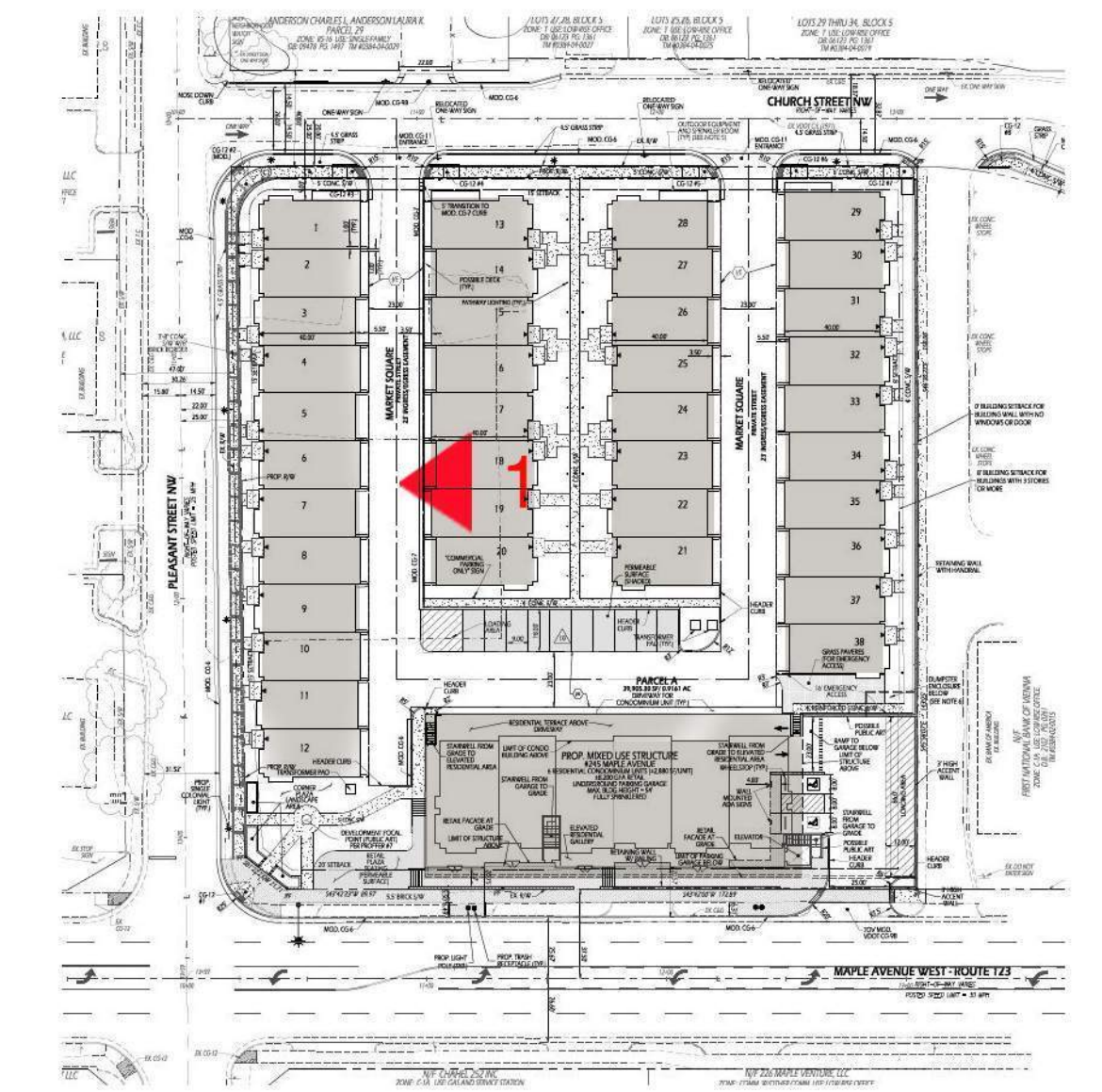
STORE FRONT
DESIGN

ARCHED PARAPET

T.O.R. LOT 1
ELEV. 8
SCHEME #3



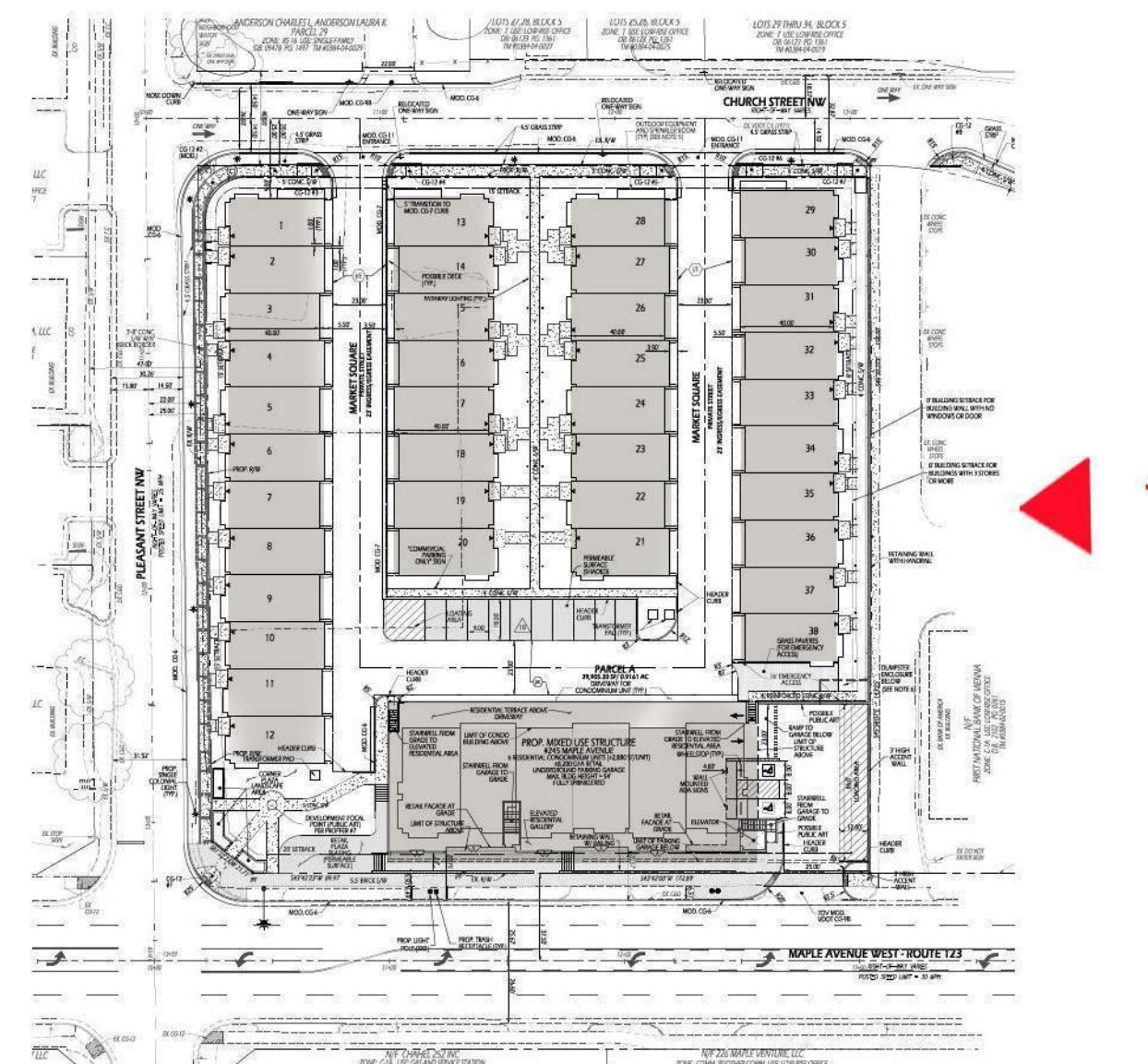
1. PLEASANT STREET - PROPOSED



KEY PLAN



1. PLEASANT STREET - PROPOSED

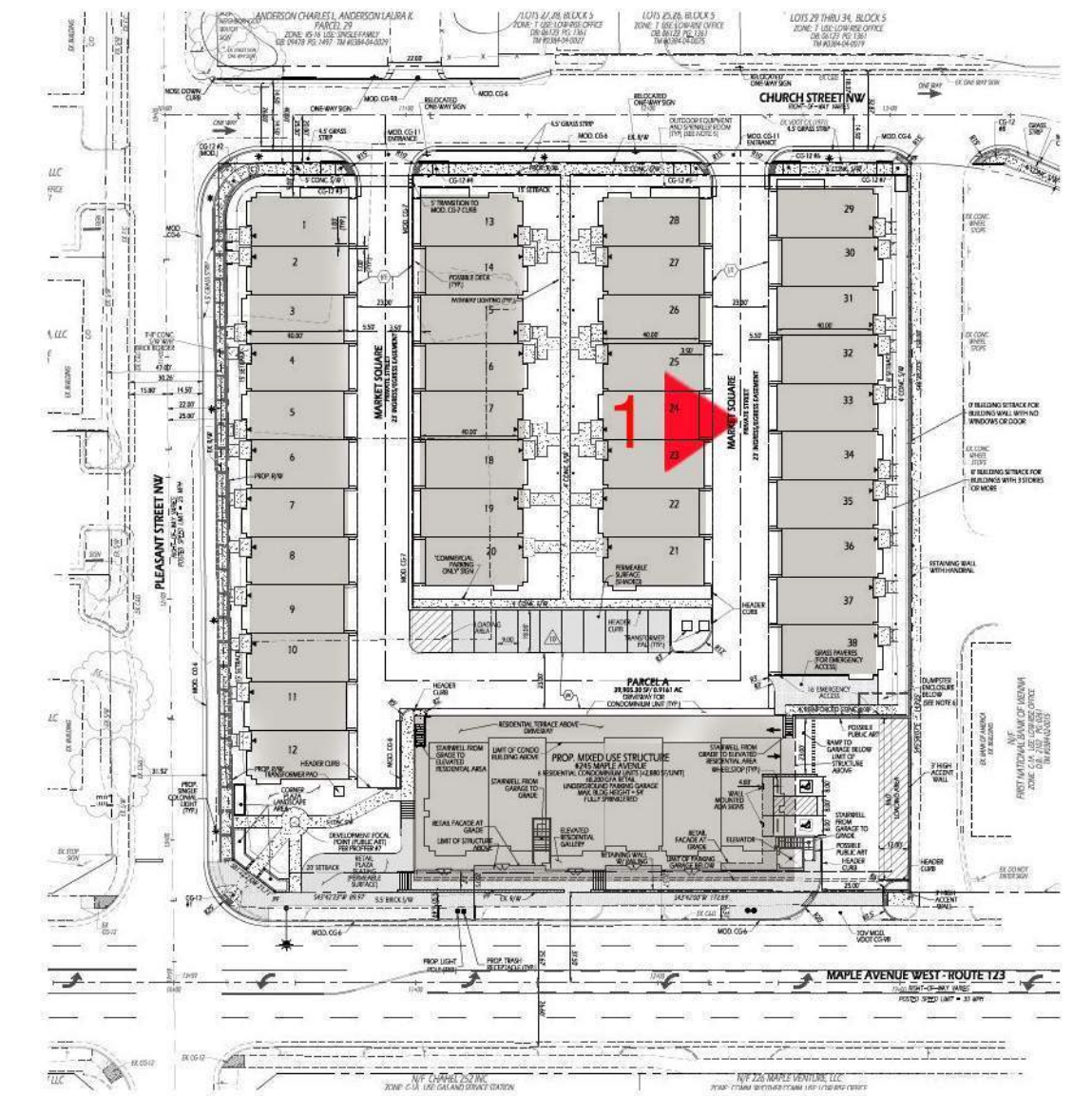


KEY PLAN



NOTE: LOCATION OF FUTURE ART WORK

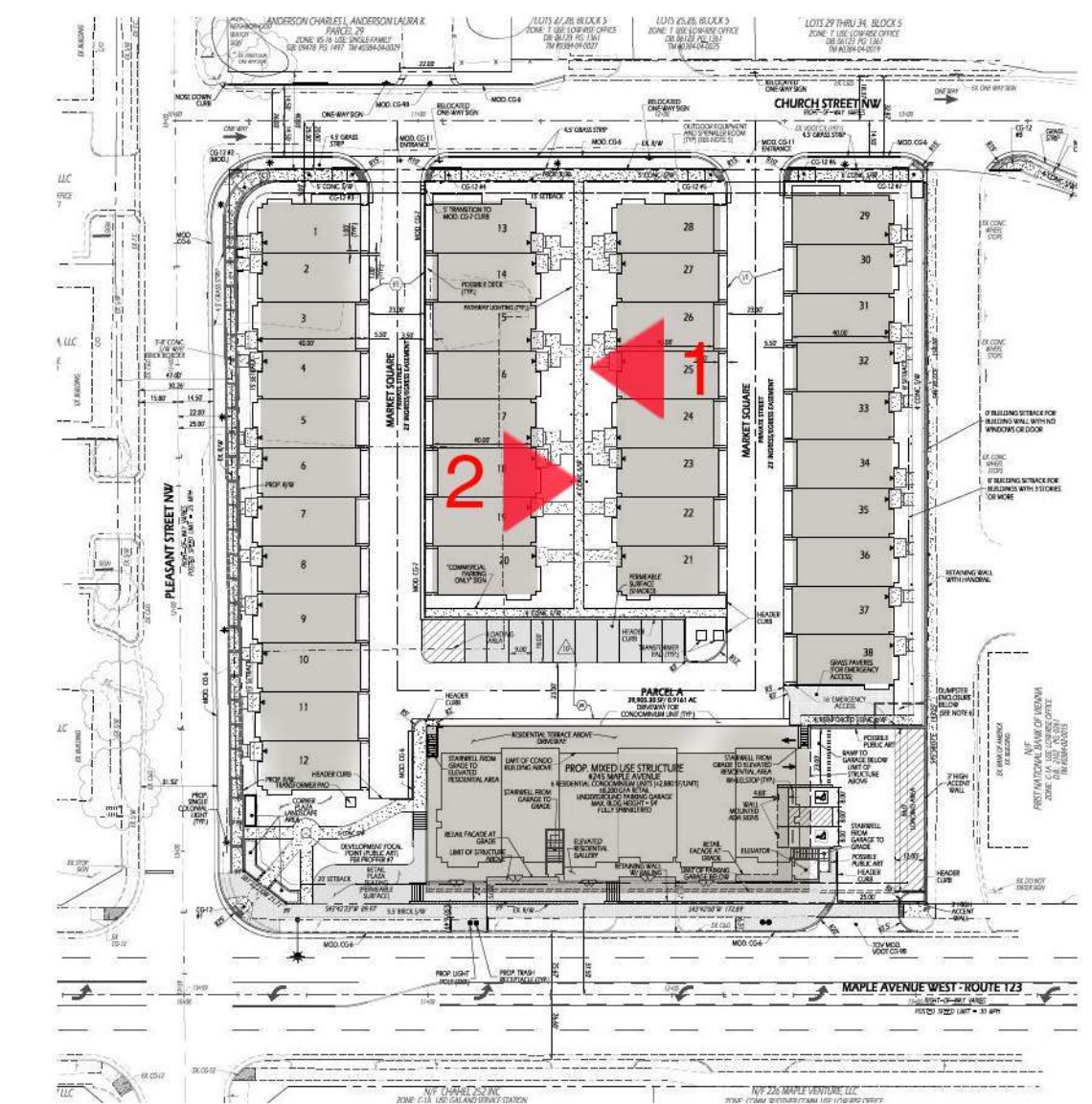
1. BANK OF AMERICA VIEW - PROPOSED



KEY PLAN



1. REAR BANK OF AMERICA STREET VIEW



KEY PLAN

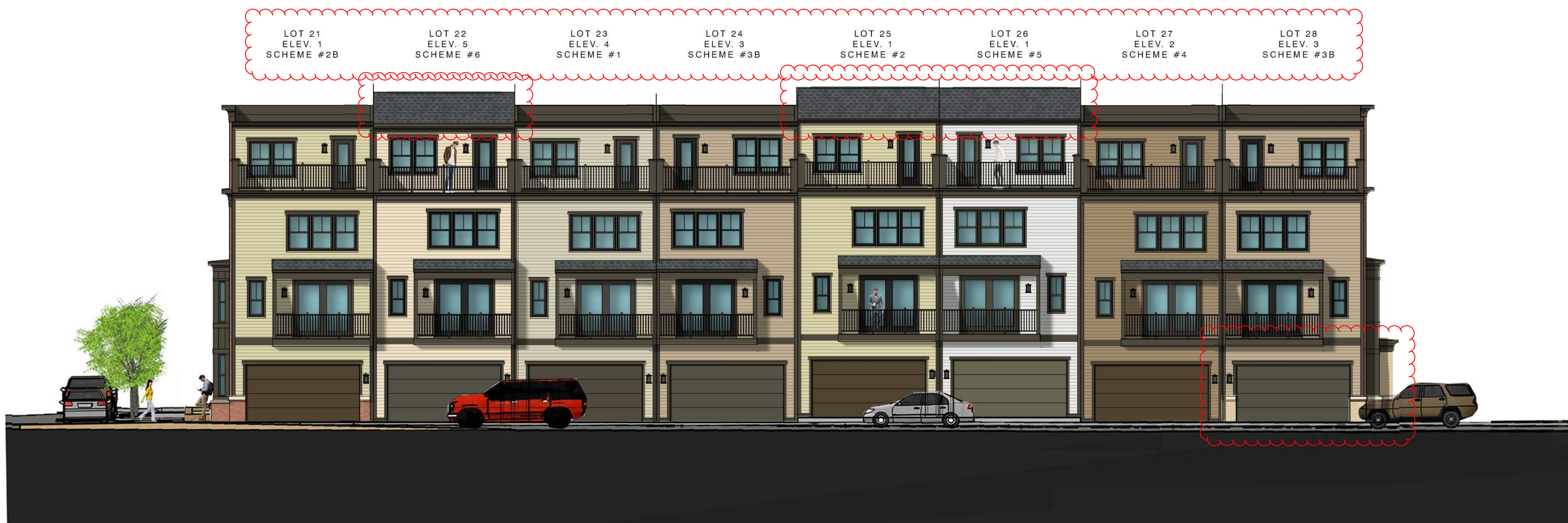
2. INTERIOR STRIP ELEVATION 2



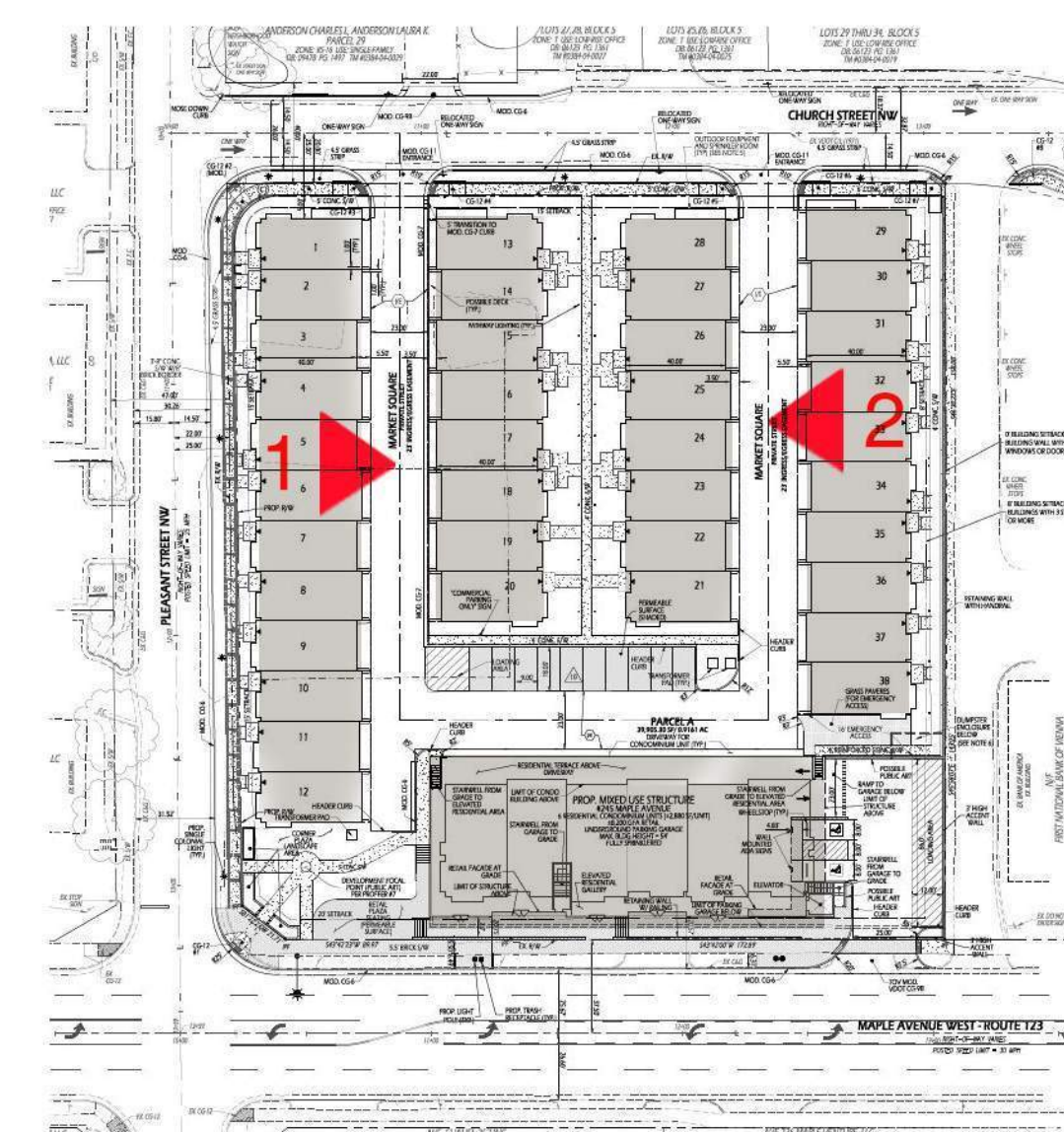
1. INTERIOR STRIP ELEVATION 1



1. REAR INTERIOR STRIP 1



2. REAR INTERIOR STRIP 2



KEY PLAN



MAPLE AVE.



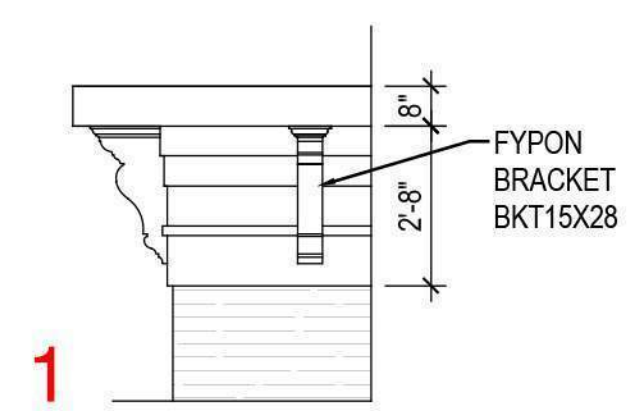
PLEASANT STREET



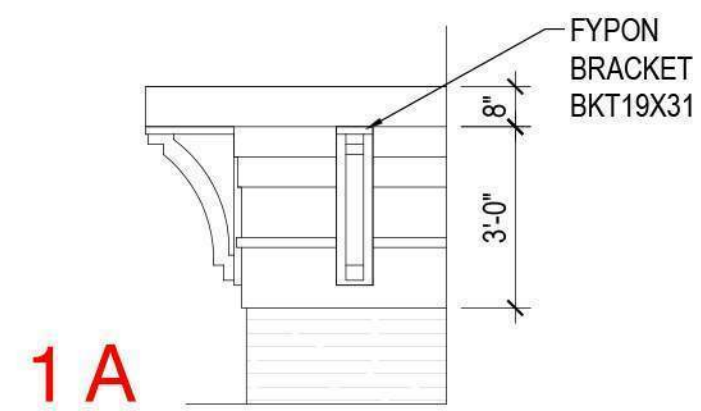
BANK OF AMERICA VIEW

PROPOSED BAY DETAILS

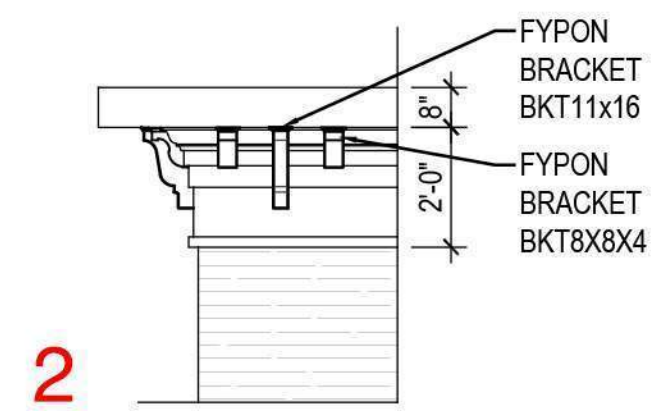
PROPOSED CORNICE PROFILES



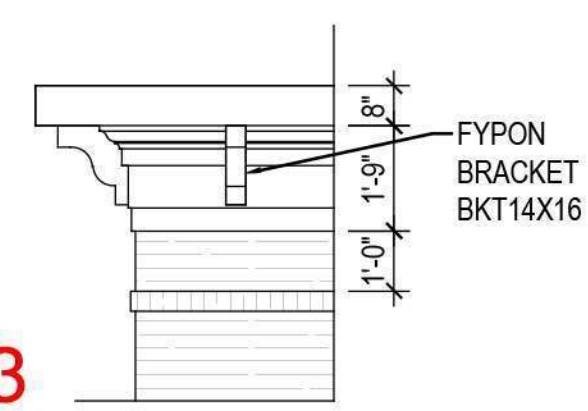
1



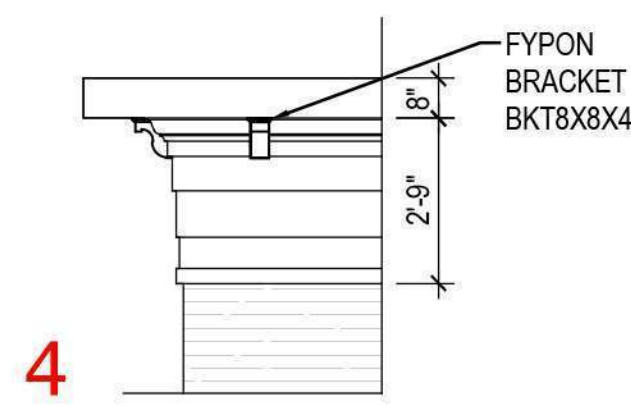
1A



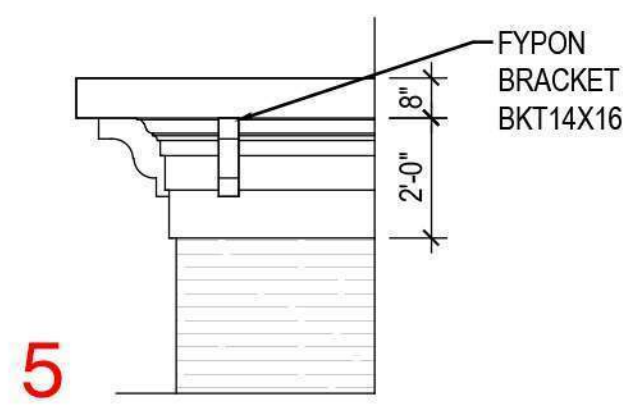
2



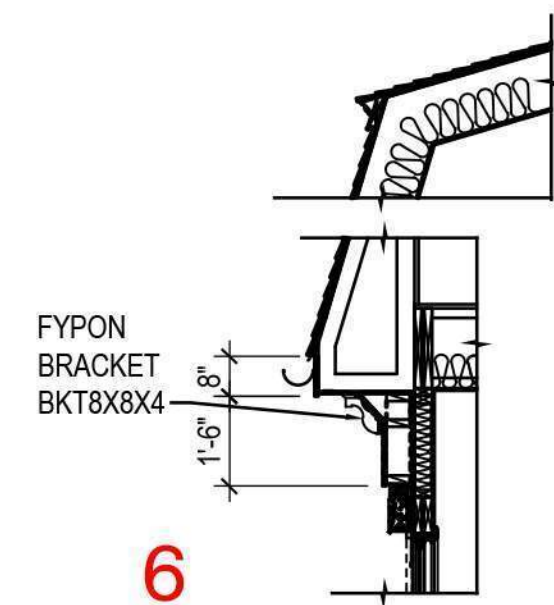
3



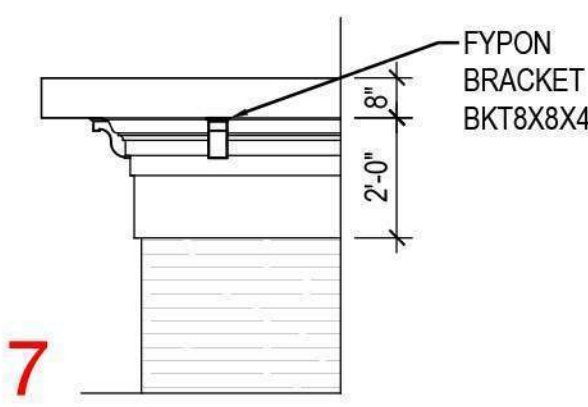
4



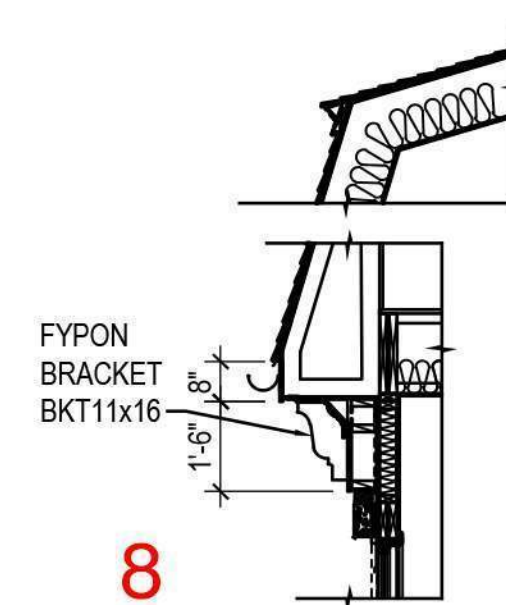
5



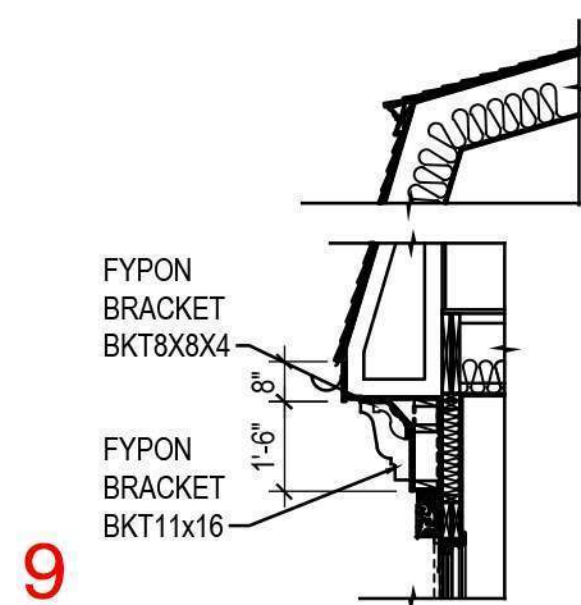
6



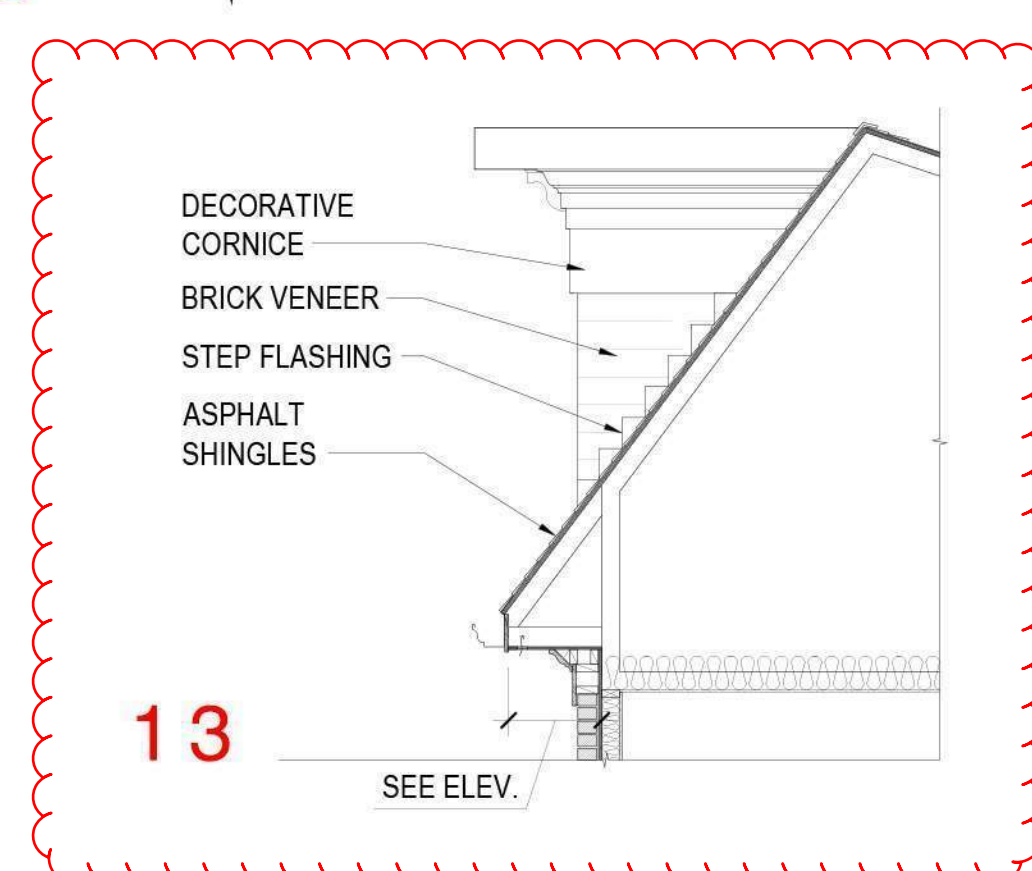
7



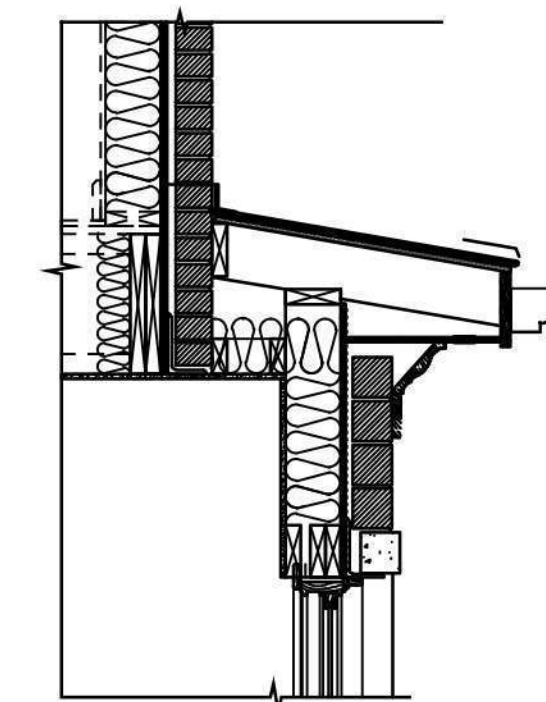
8



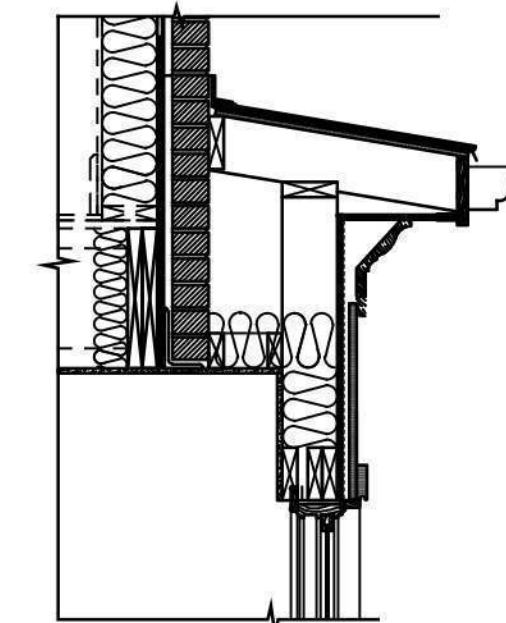
9



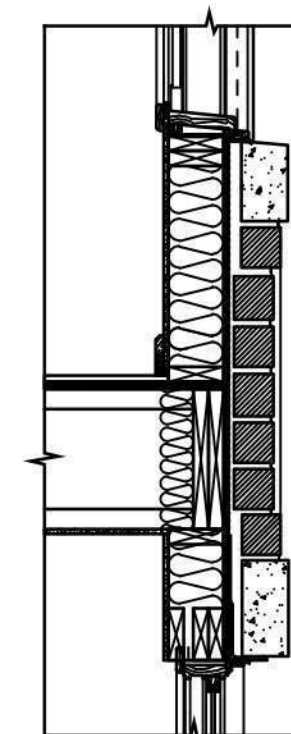
13



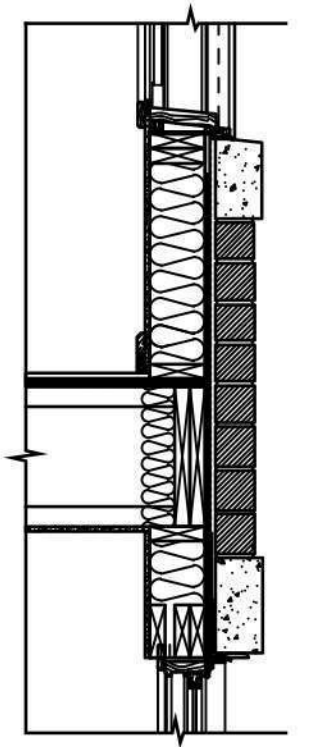
10



11



12





MAPLE AVE.



PLEASANT STREET

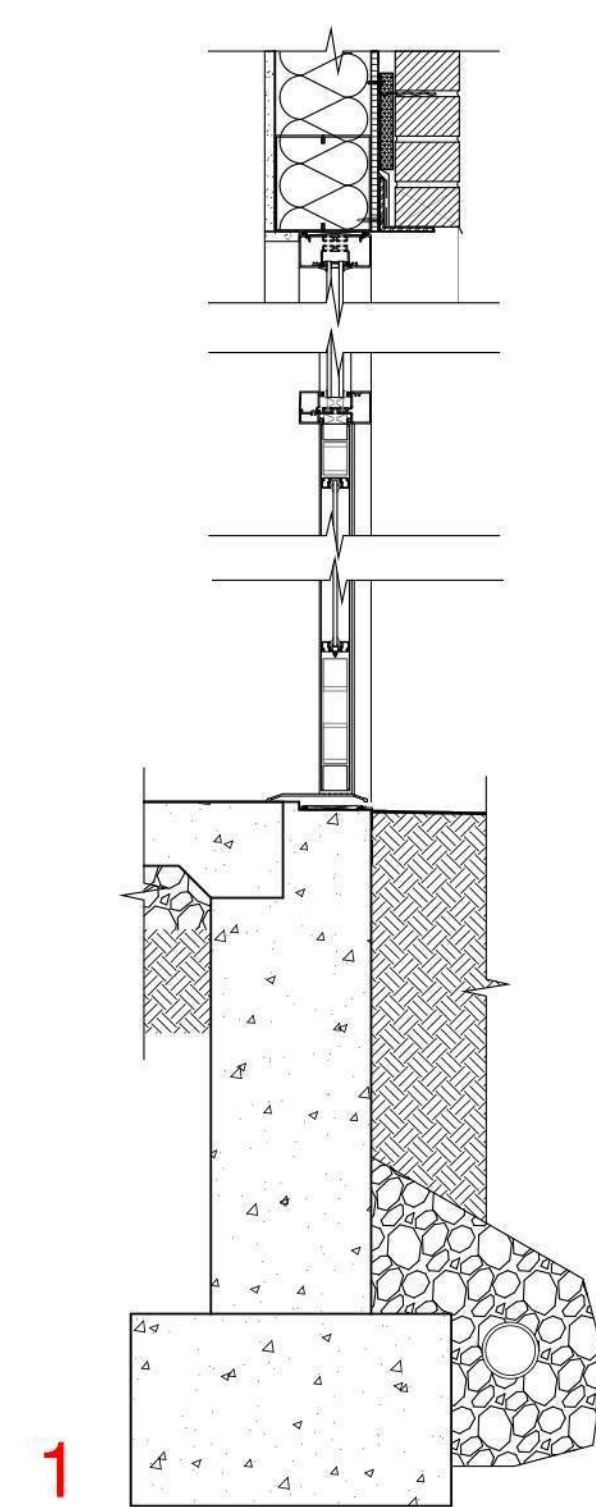


BANK OF AMERICA VIEW

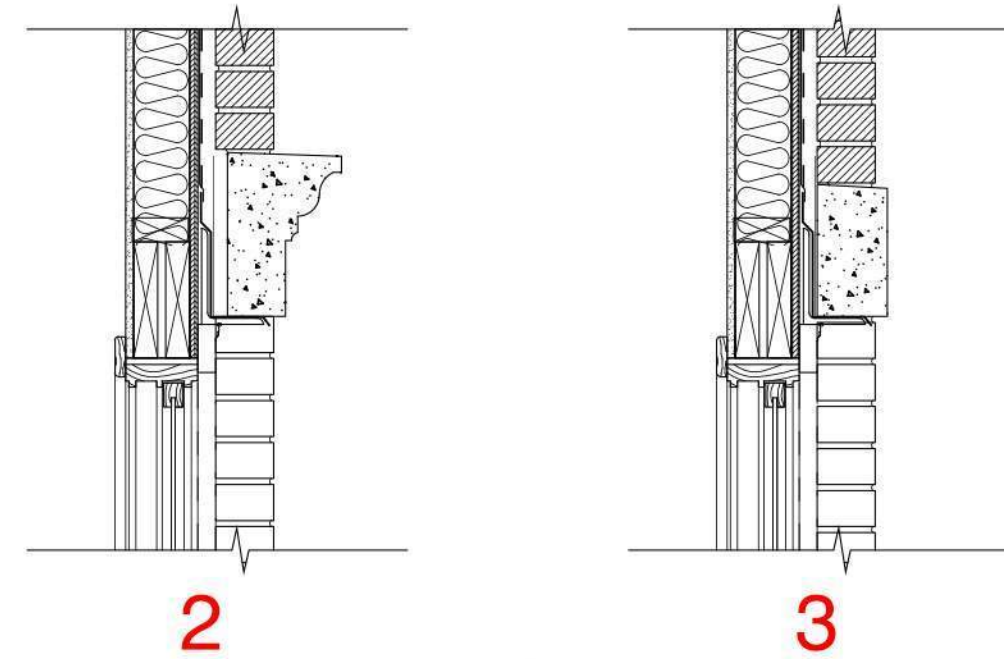
PROPOSED ENTRY DETAILS

PROPOSED WINDOW SECTIONS

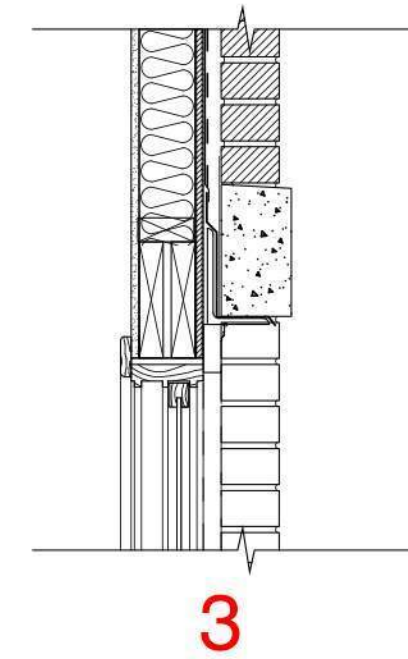
PROPOSED WALL SECTION DETAILS



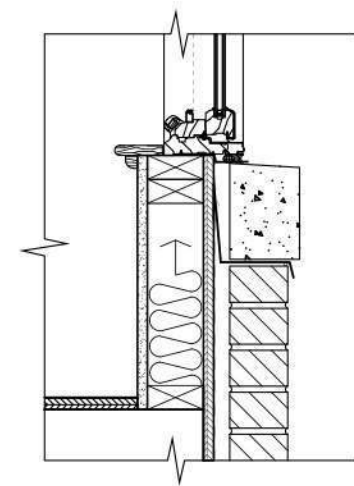
1



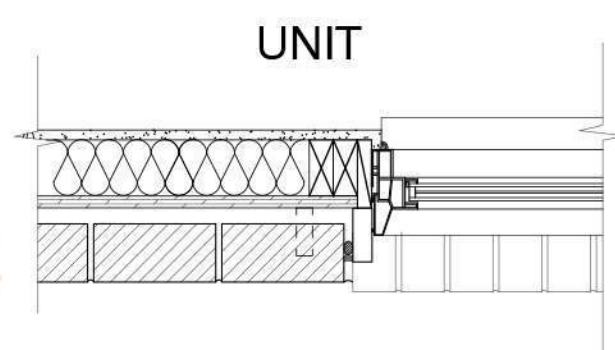
2



3

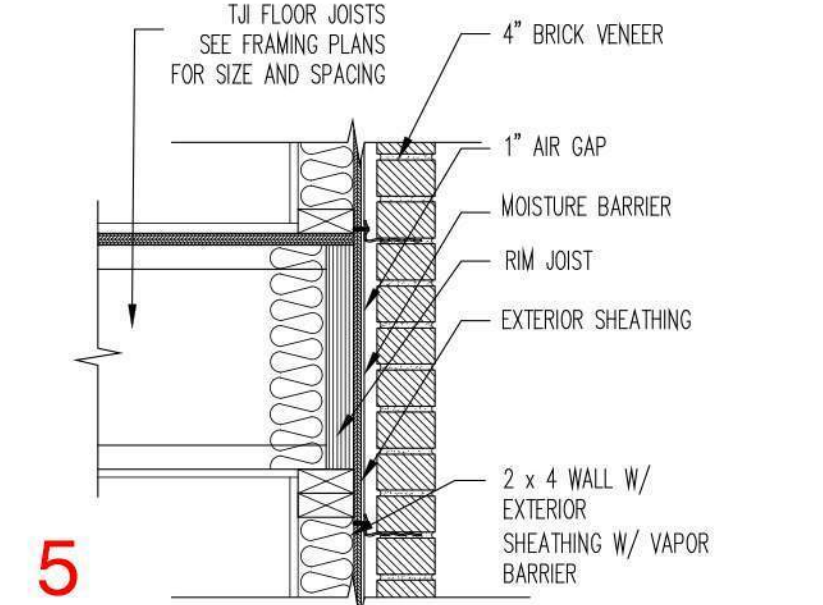


4

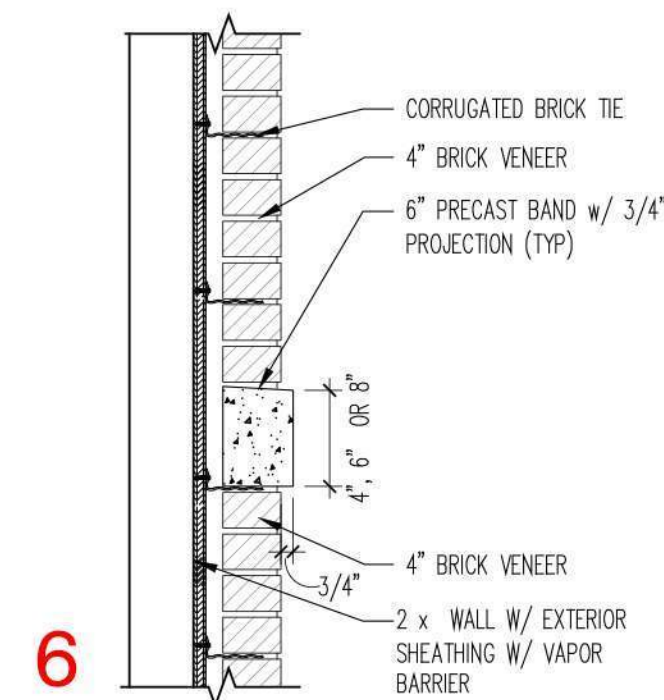


UNIT

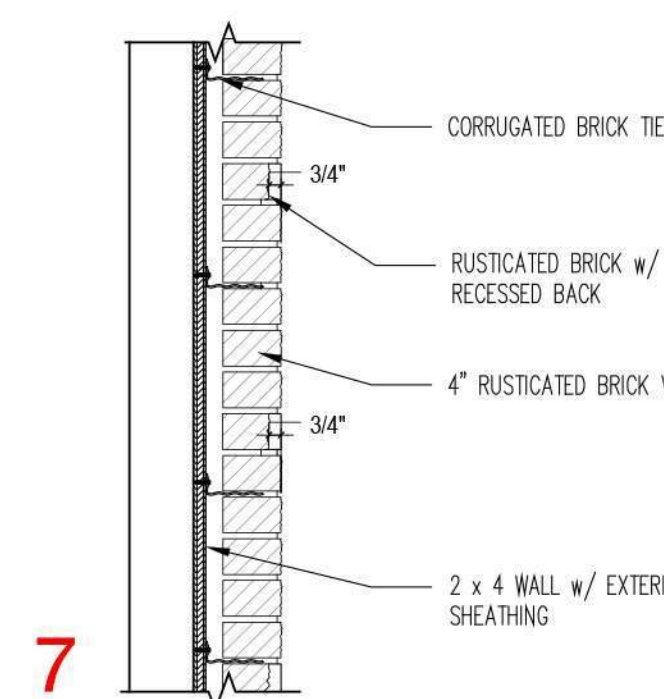
EXTERIOR



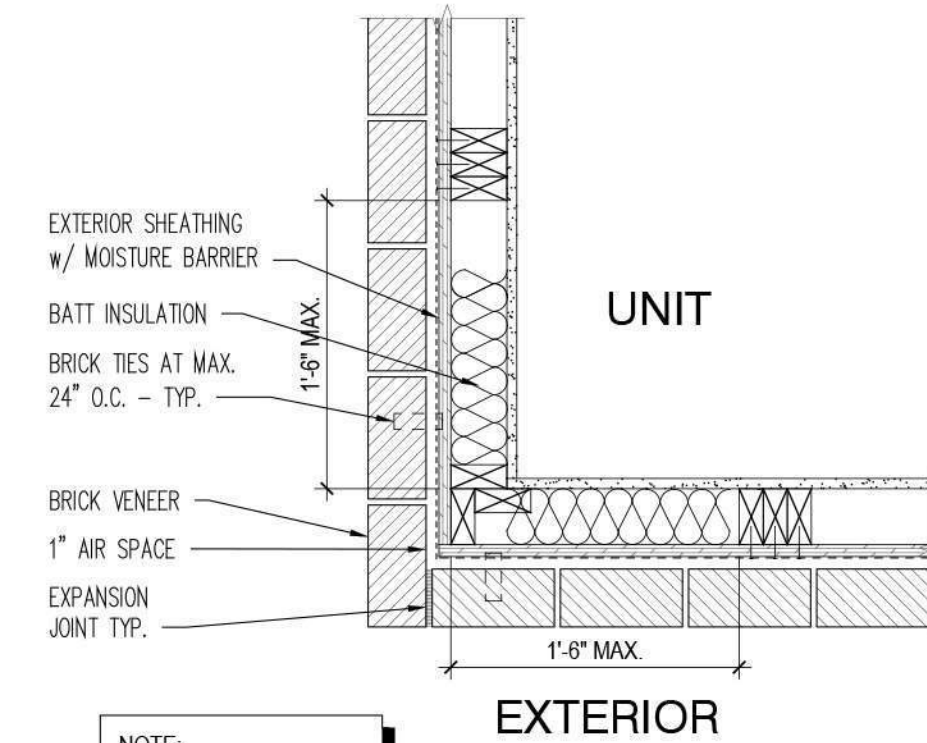
5



6



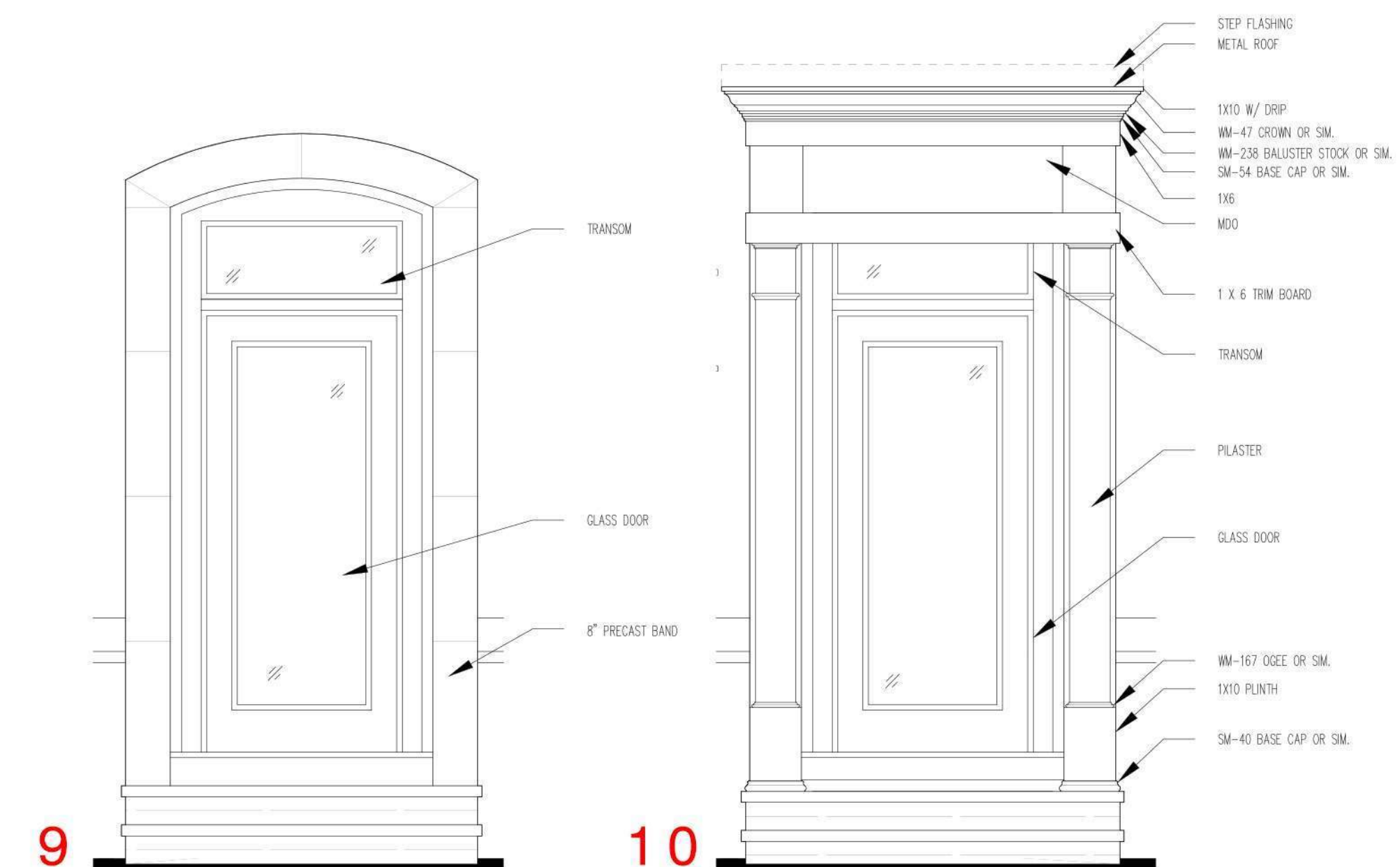
7



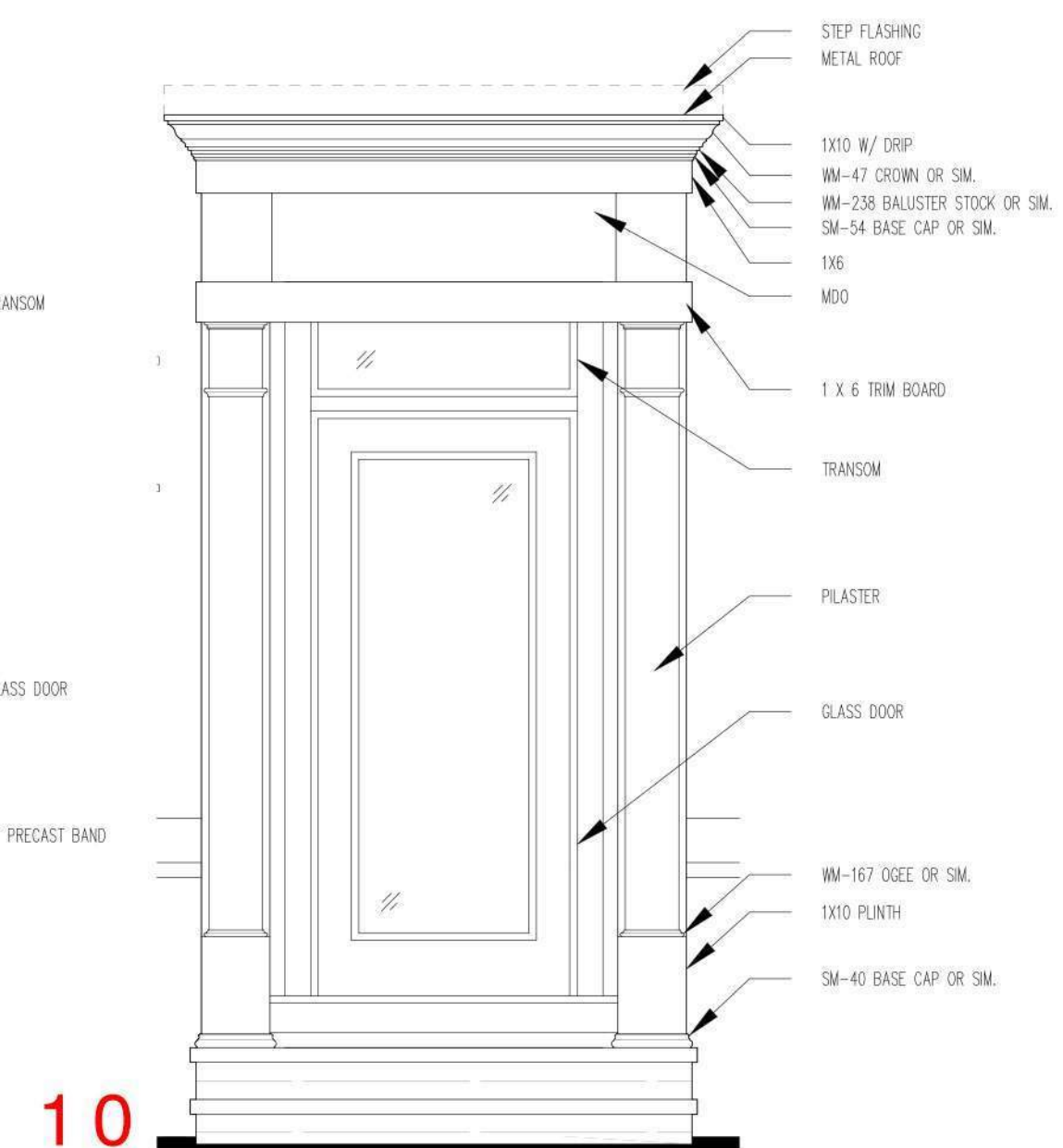
8



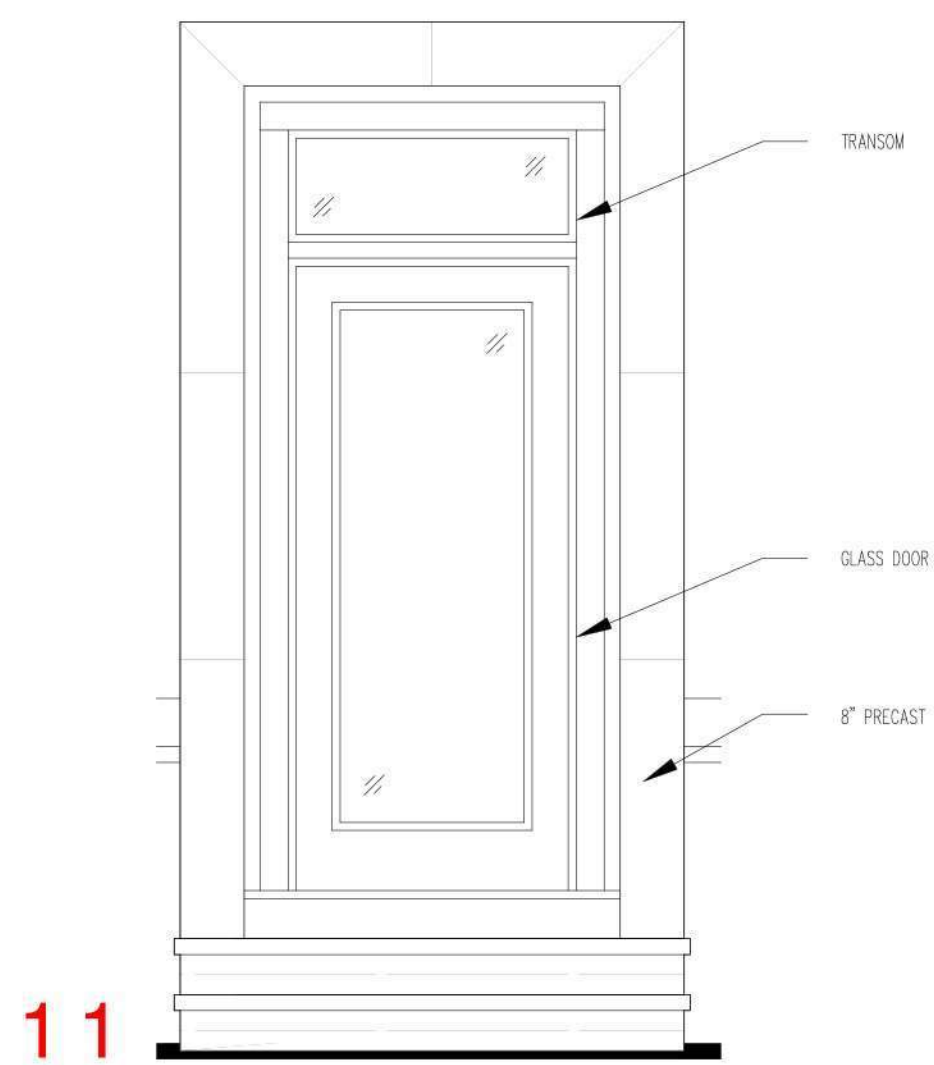
RUSTICATED BRICK EXAMPLE



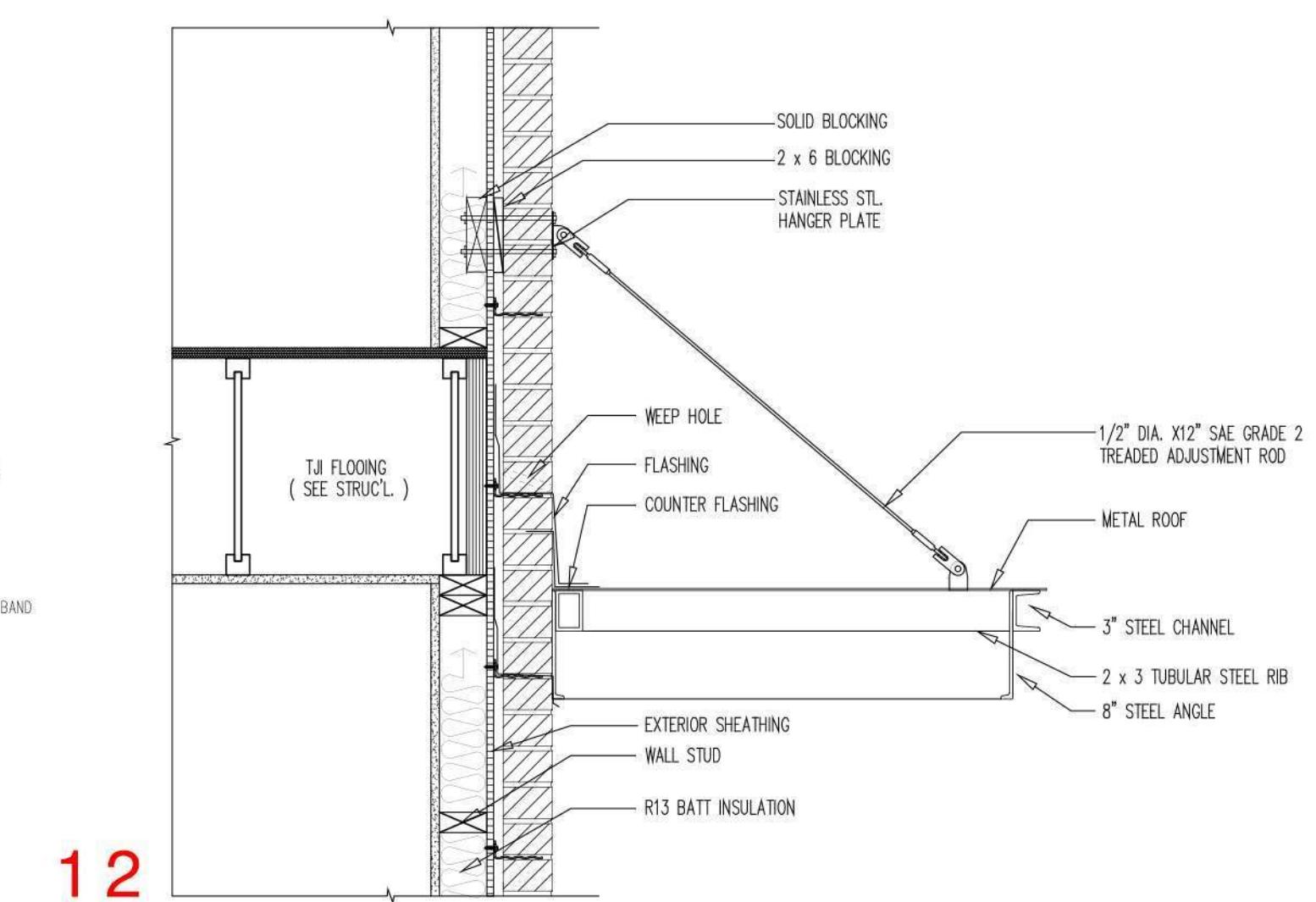
9



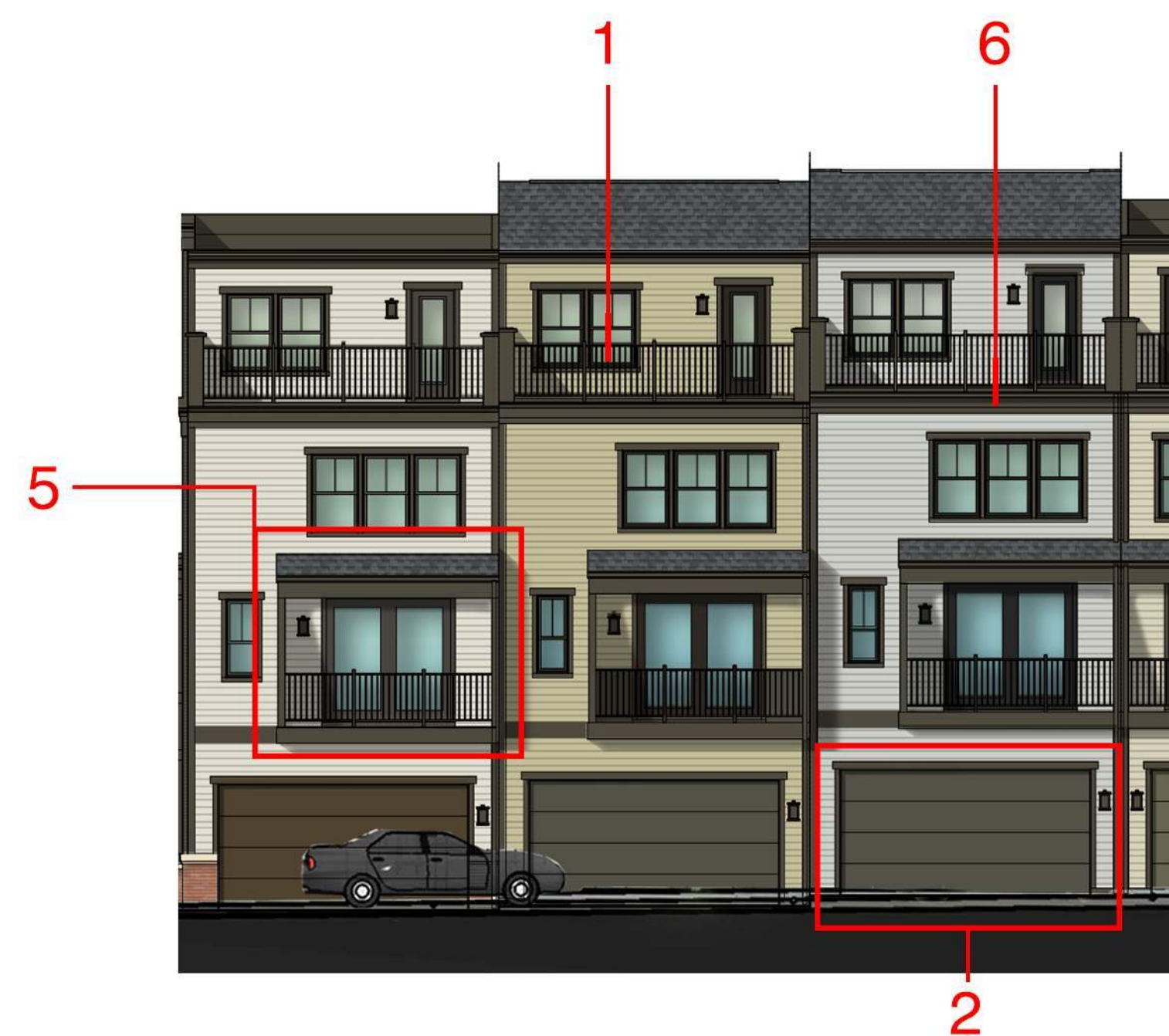
10



11



12



BANK OF AMERICA VIEW

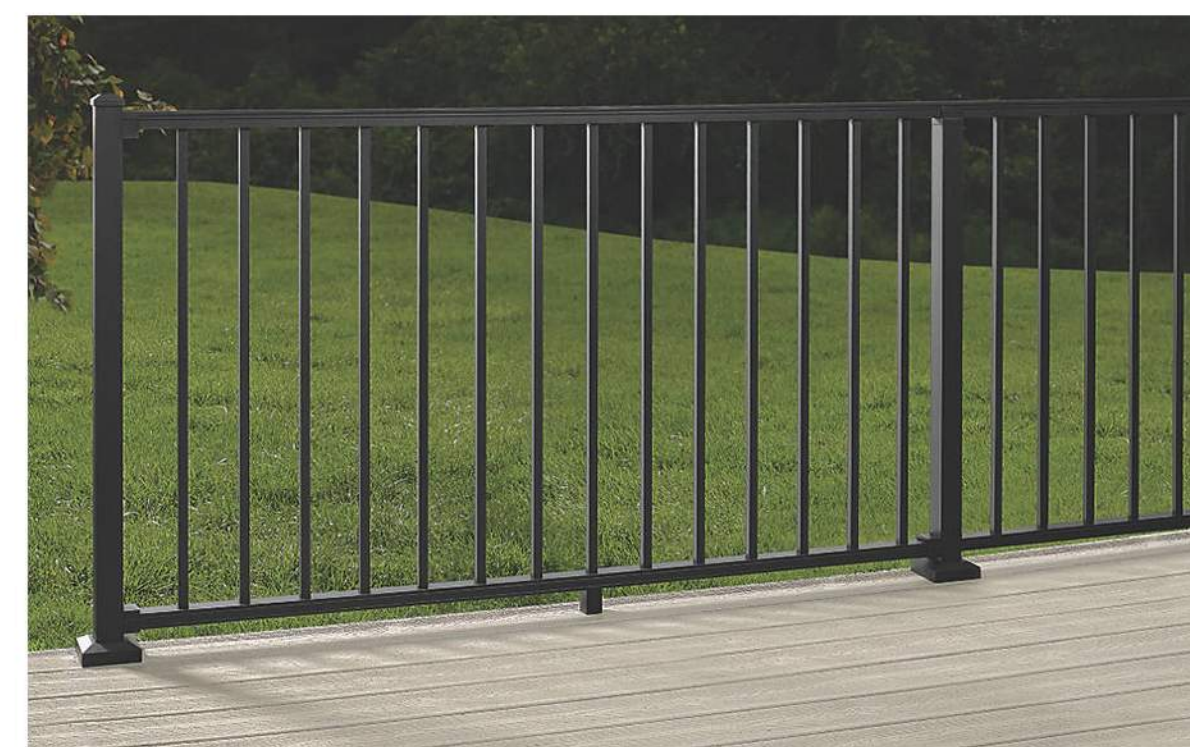


MAPLE AVE.



7. RETAINING WALL
VERTICA - DAKOTA BLEND

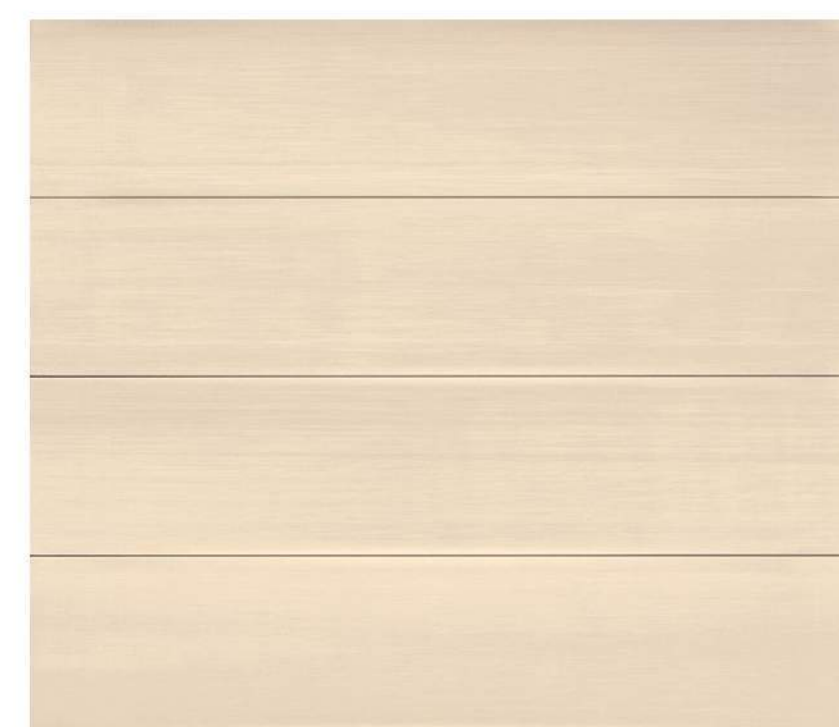
8. PRECAST CAP
WARM PRECAST COLOR



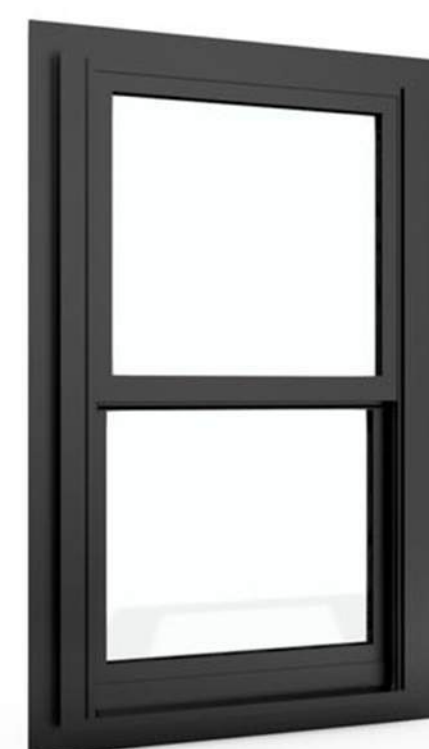
1. TREX SIGNATURE
ALUMINUM RAILING
- BLACK



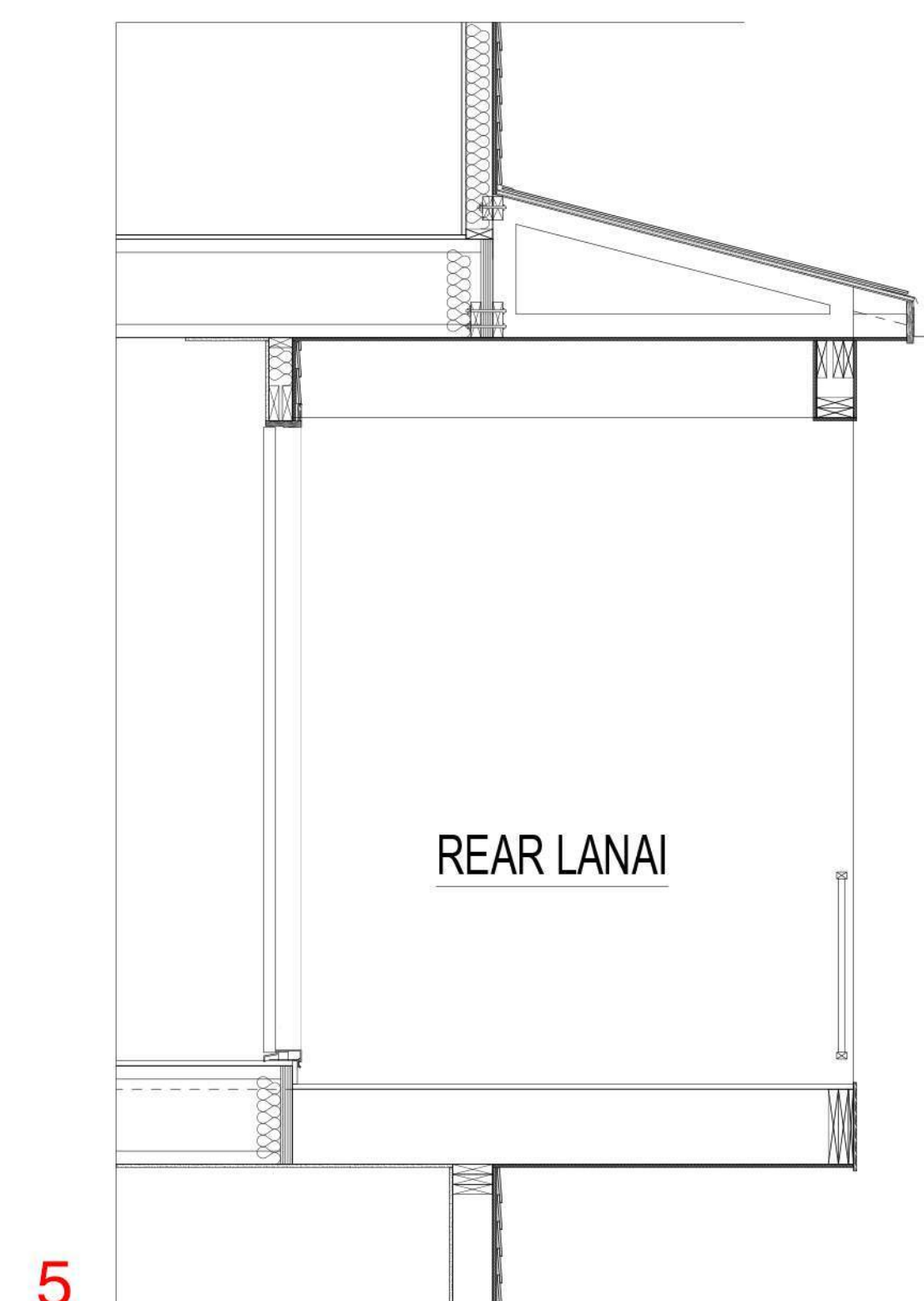
3. POWDER COATED
ALUMINUM RAILING
- BLACK



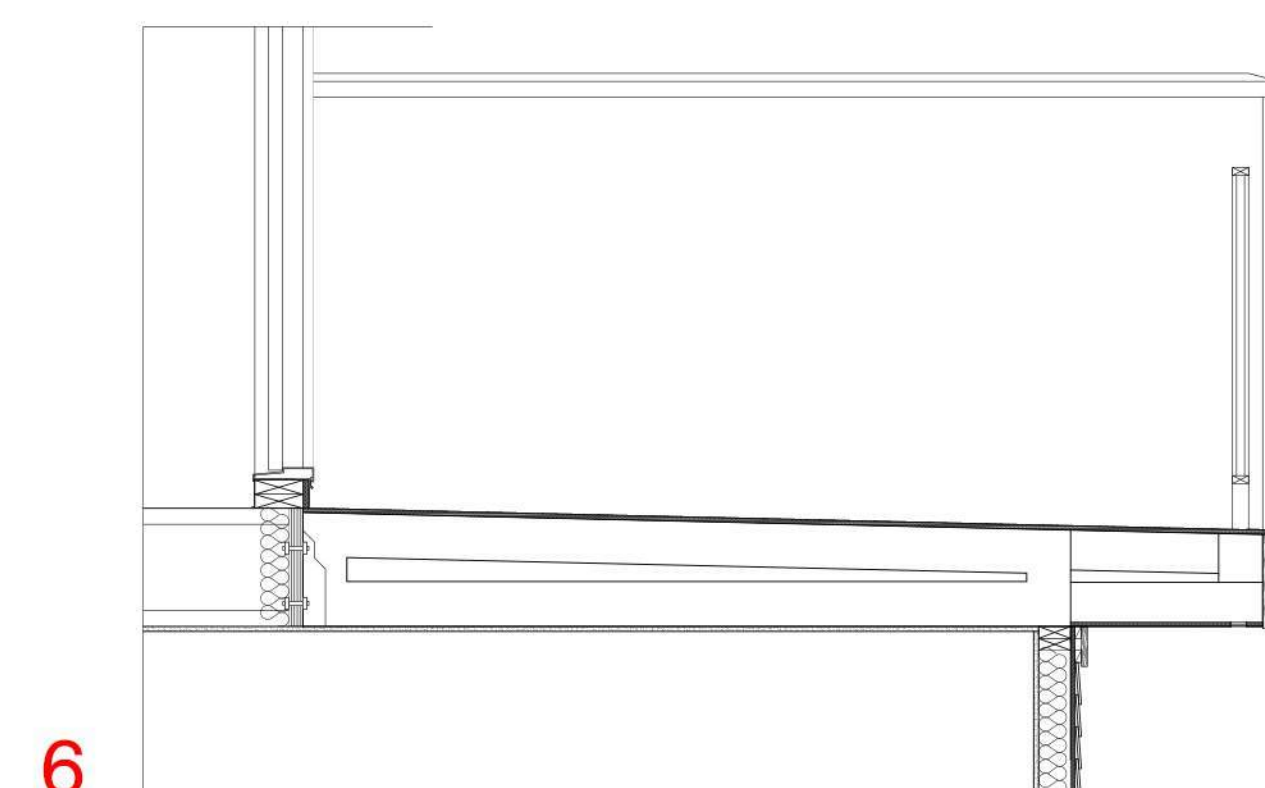
2. AMARR LINCOLN
FLUSH PANEL
GARAGE DOOR



4. PLYGEM 2100 SERIES
-BRONZE



5



6

DETAILS

TOWNS OVER RETAIL

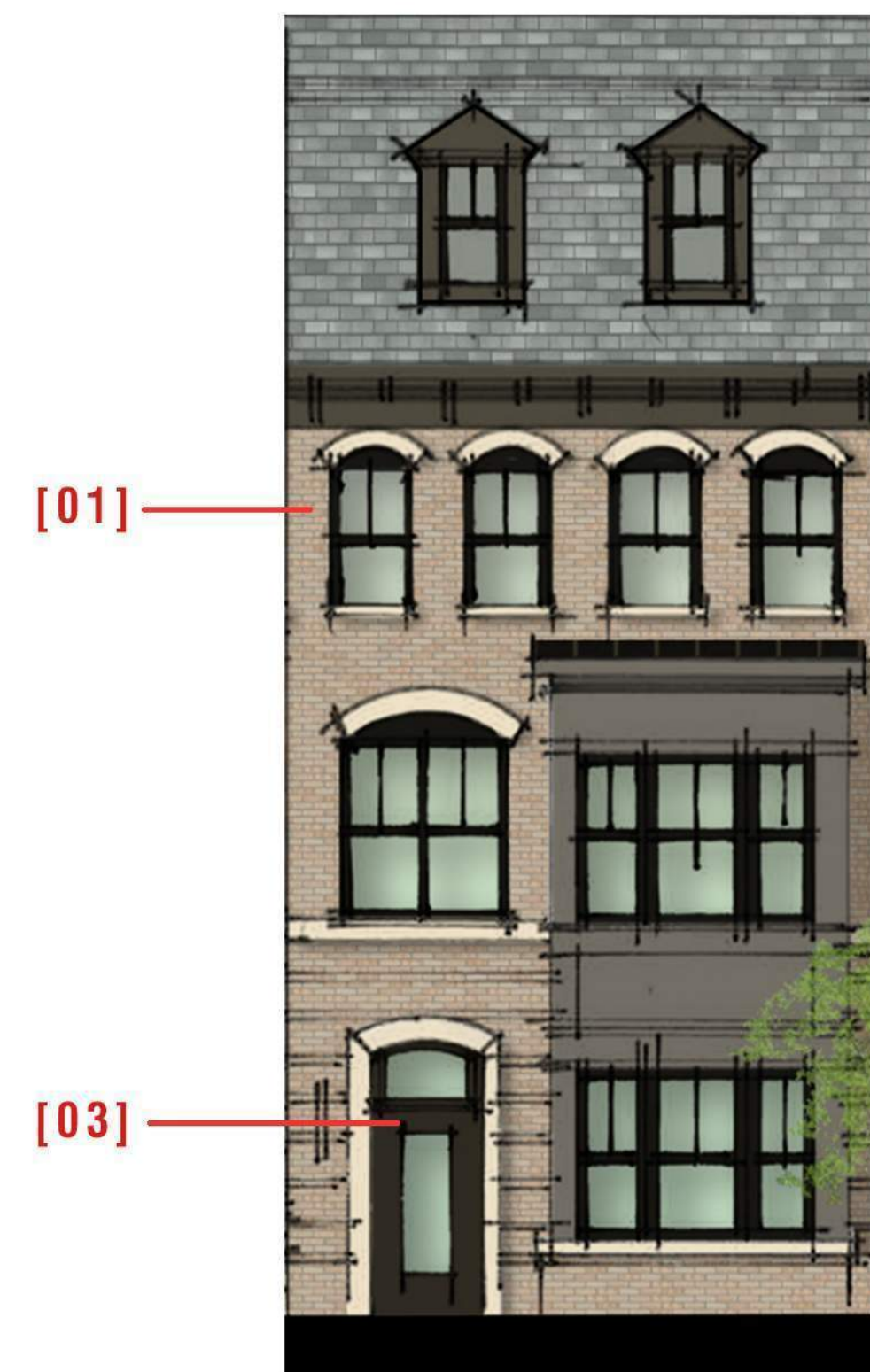








SCHEME #1

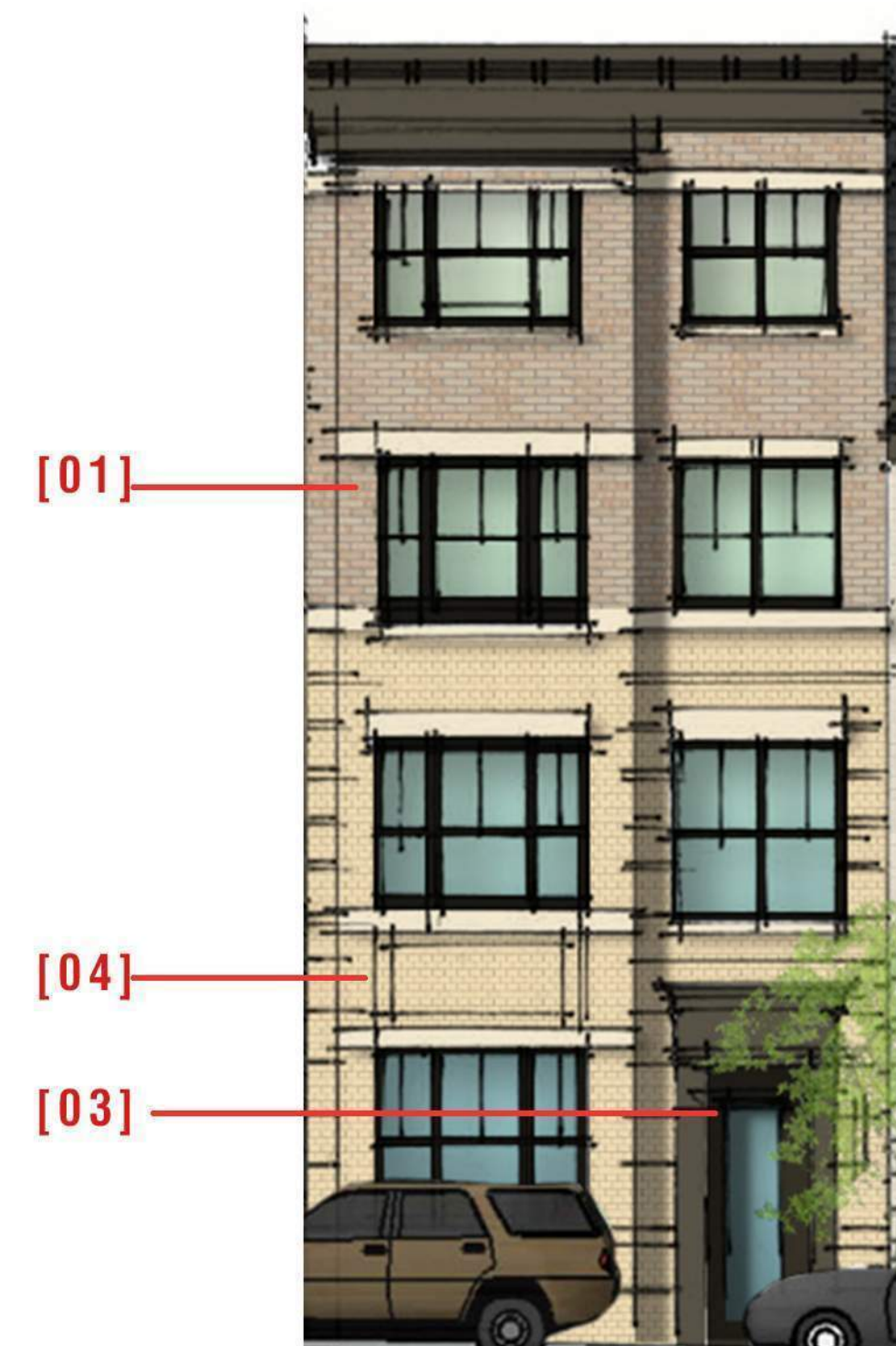


SCHEME #1



SCHEME #2

SCHEME #2

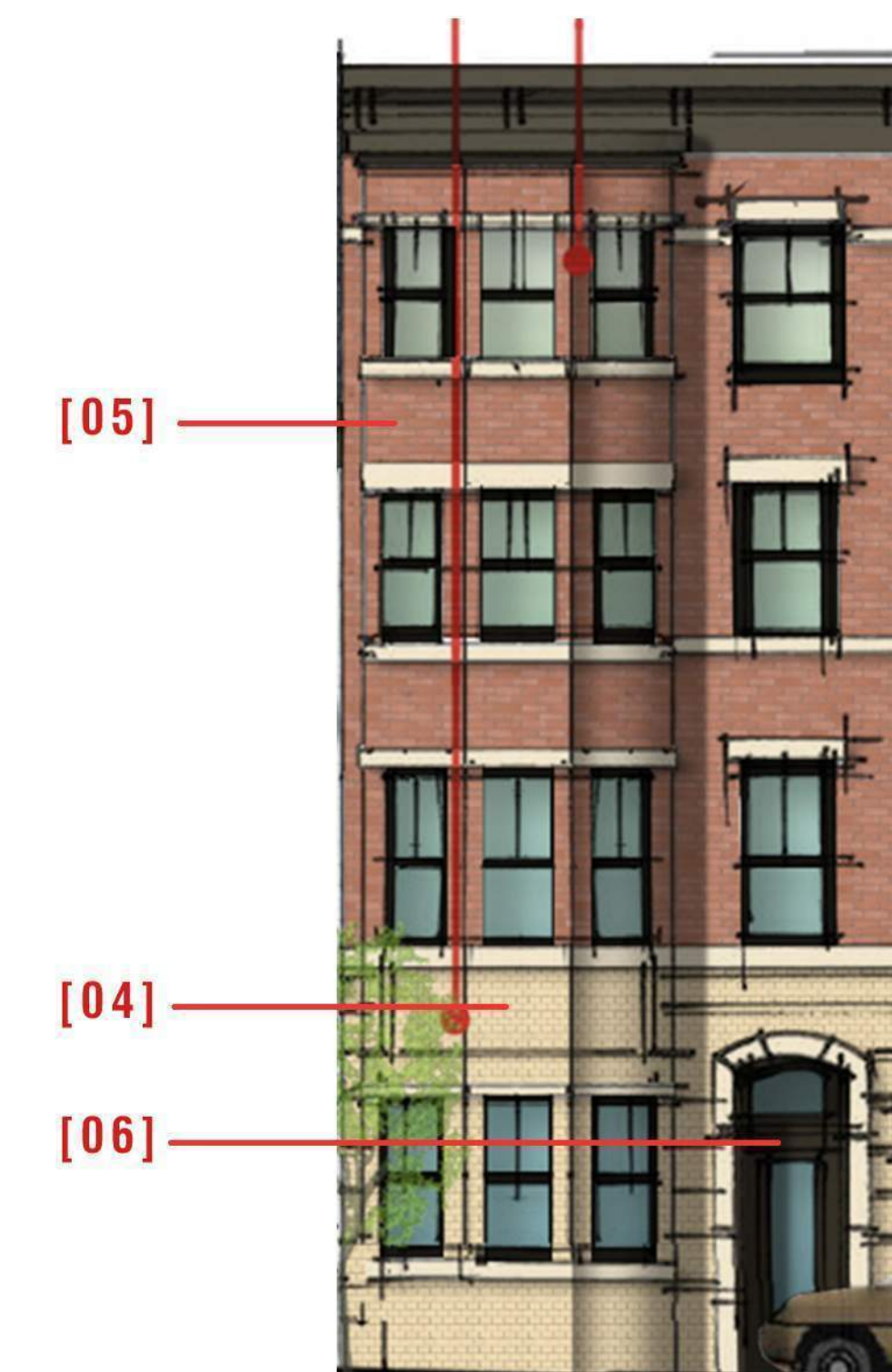


SCHEME #1B

SCHEME #1B (BASE BRICK)



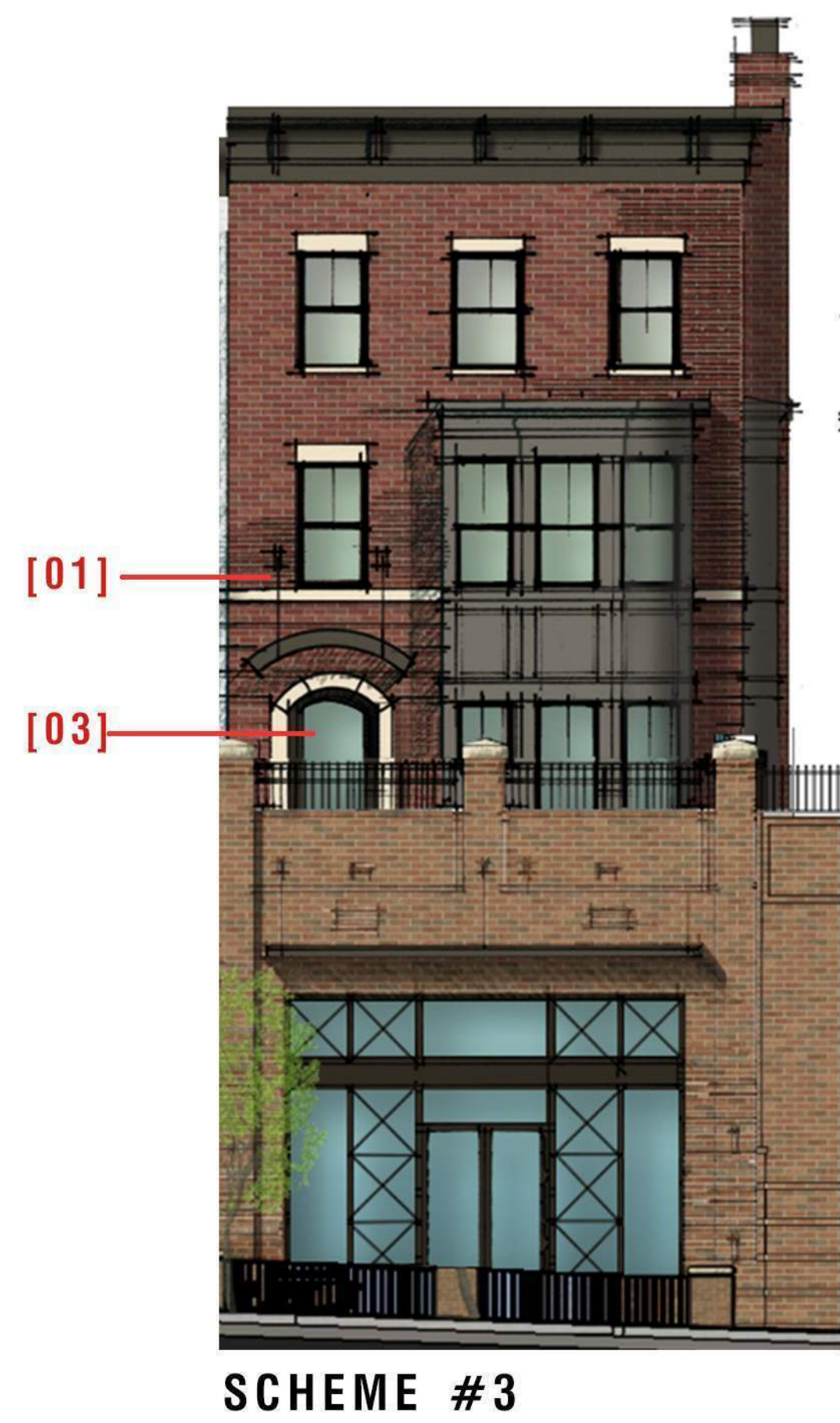
NOTE: ALL SHERWIN WILLIAMS DESIGNATED COLOR BRICK WILL BE PAINTED ON SITE AND NOT FACTORY DELIVERED.



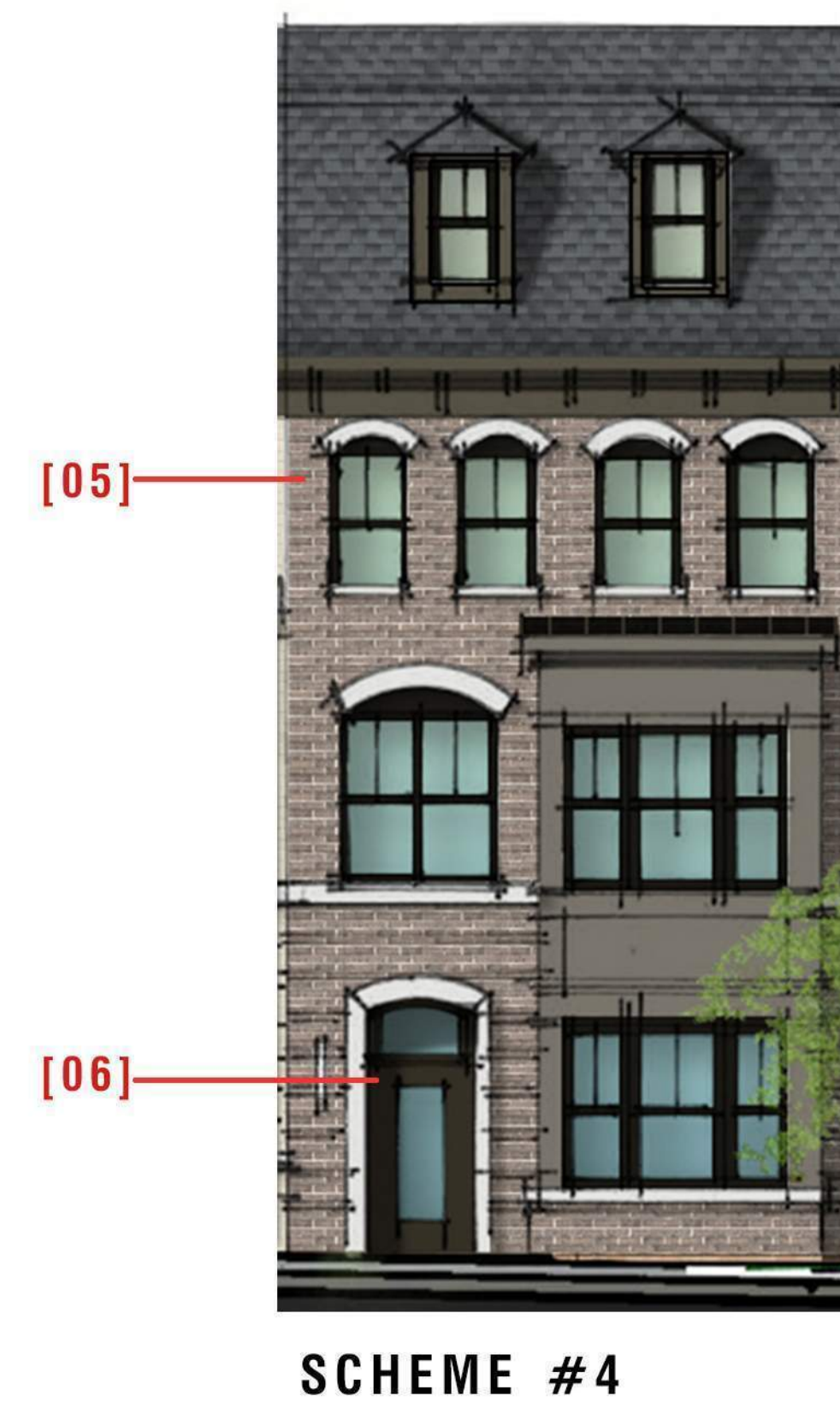
SCHEME #2B

SCHEME #2B (BASE BRICK)

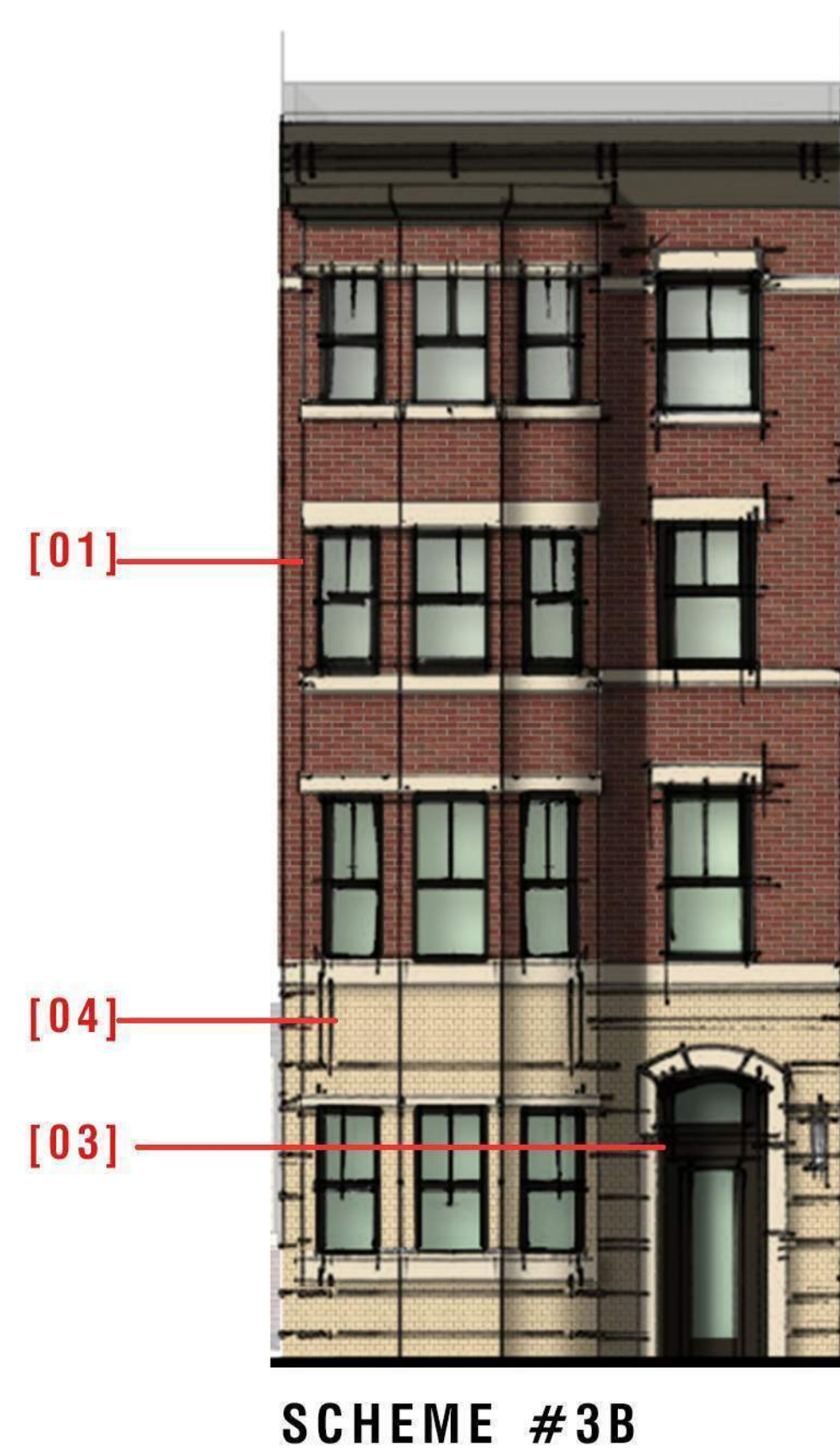




SCHEME #3



SCHEME #4



SCHEME #3B (BASE BRICK)



NOTE: ALL SHERWIN WILLIAMS DESIGNATED COLOR BRICK
WILL BE PAINTED ON SITE AND NOT FACTORY DELIVERED.

SCHEME #5



SCHEME #6



NOTE: ALL SHERWIN WILLIAMS DESIGNATED COLOR BRICK
WILL BE PAINTED ON SITE AND NOT FACTORY DELIVERED.