



Town of Vienna Police Department

Town Council Work Session

October 28, 2019

Neighborhood Context



Center Street



Locust Street - West

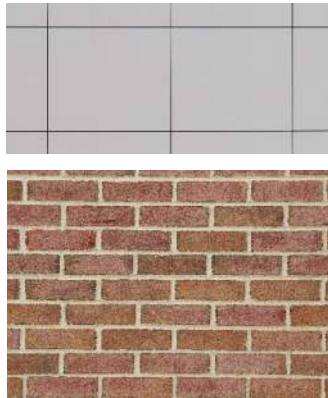
SECURED
DRIVE



Locust Street - East

Contextual Material Study

Community Center



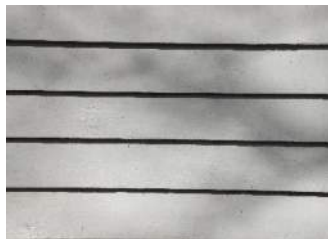
Brick
Metal Paneling

Townhouses on Locust St.



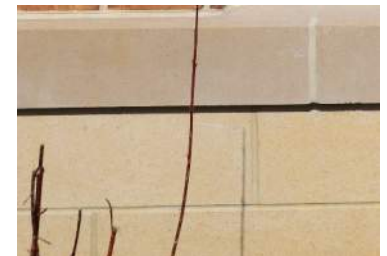
Standing Seam Metal
Roof
Scalloped Shingles

Bowman House



Vinyl Siding

Townhouses on Locust St.



Masonry Base with Precast Sill

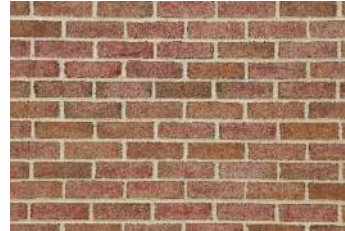
Material Study



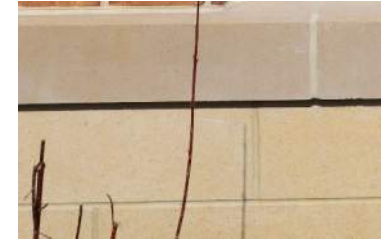
Fiber Cement
Panel(wood pattern)



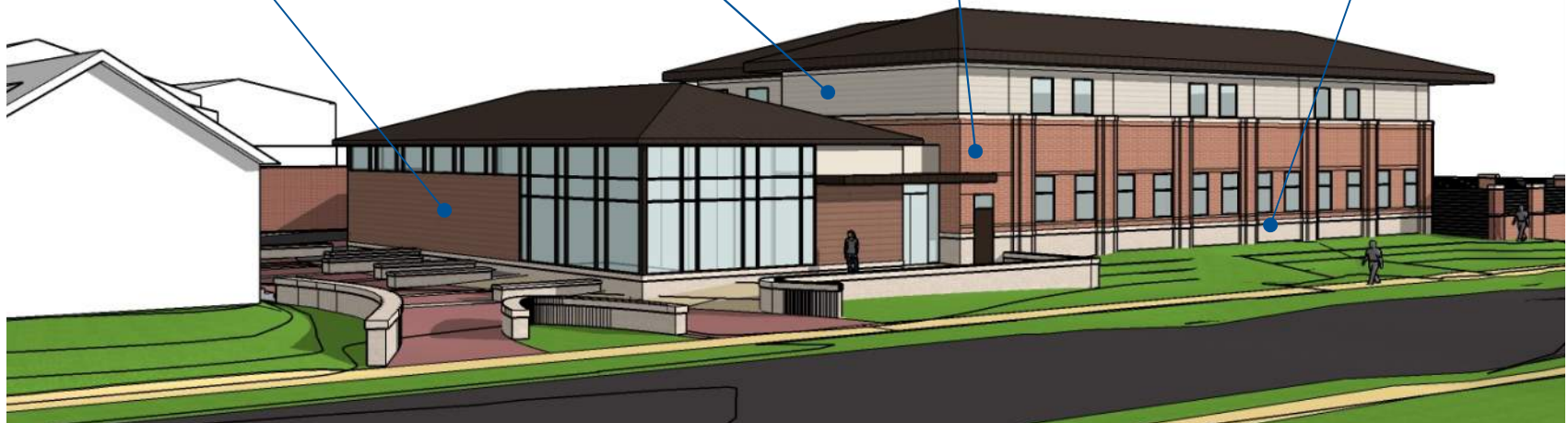
Fiber Cement
Panel(smooth or wood)



Face Brick



Masonry Base with
Precast Sill



Material Study – Perspectives



Locust Street Looking North



Northeast Perspective- Towards Plaza



Locust Street Looking South



Northwest Perspective – From Locust Street

Material Study - Brick



- Desert compared to Existing Police Station



- Desert compared to Existing Fire Station

Material Study - Brick



- Marion Blend compared to Community Center



- Marion Blend compared to Town Hall

Material Pallet – Marion Blend

Standing Seam
Metal Roof &
Window Frame

Fiber Cement
Panel 1

Low E insulated
Glass

Face Brick

Fiber Cement
Panel 2

Architectural
CMU Base



Material Study – Marion Blend



Northwest Aerial- Towards Plaza

Material Study – Marion Blend



Northwest Perspective – From Locust Street

Material Pallet – Desert

Standing Seam
Metal Roof &
Window Frame

Fiber Cement
Panel 1

Face Brick

Low E insulated
Glass

Fiber Cement
Panel 2

Architectural
CMU Base



Material Study – Desert



Northwest Aerial- Towards Plaza

Material Study – Desert



Northwest Perspective – From Locust Street

Material Study – Marion Blend(Updated)



Northwest Aerial- Towards Plaza

Material Study – Marion Blend (Updated)



Northwest Perspective – From Locust Street

Material Study – Marion Blend (Updated)



Southwest Perspective – From Locust Street

Existing Plaza



Existing Plaza –View from Parking Lot



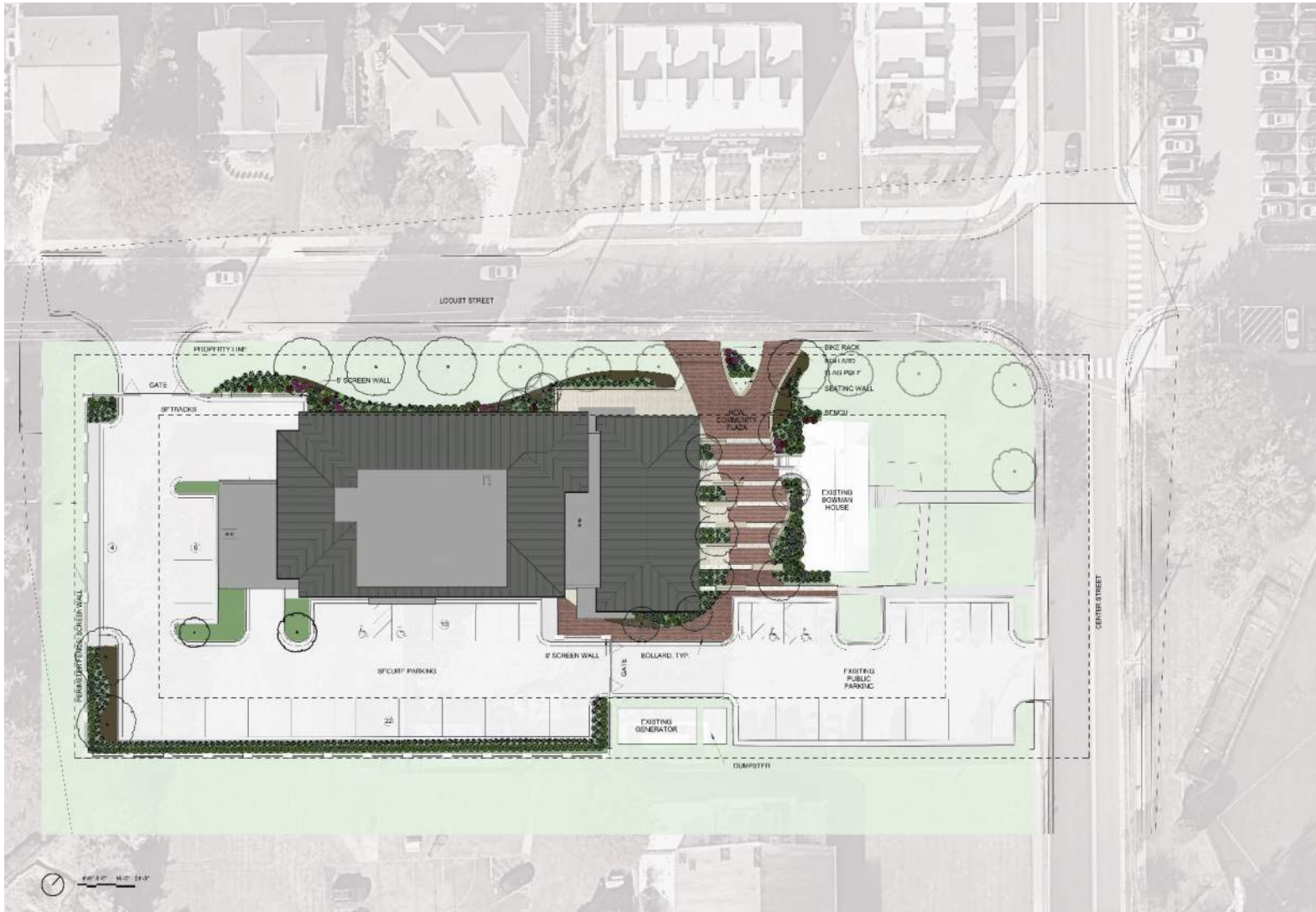
Existing Plaza –View from Locust St.

Plaza & Site Best Practices

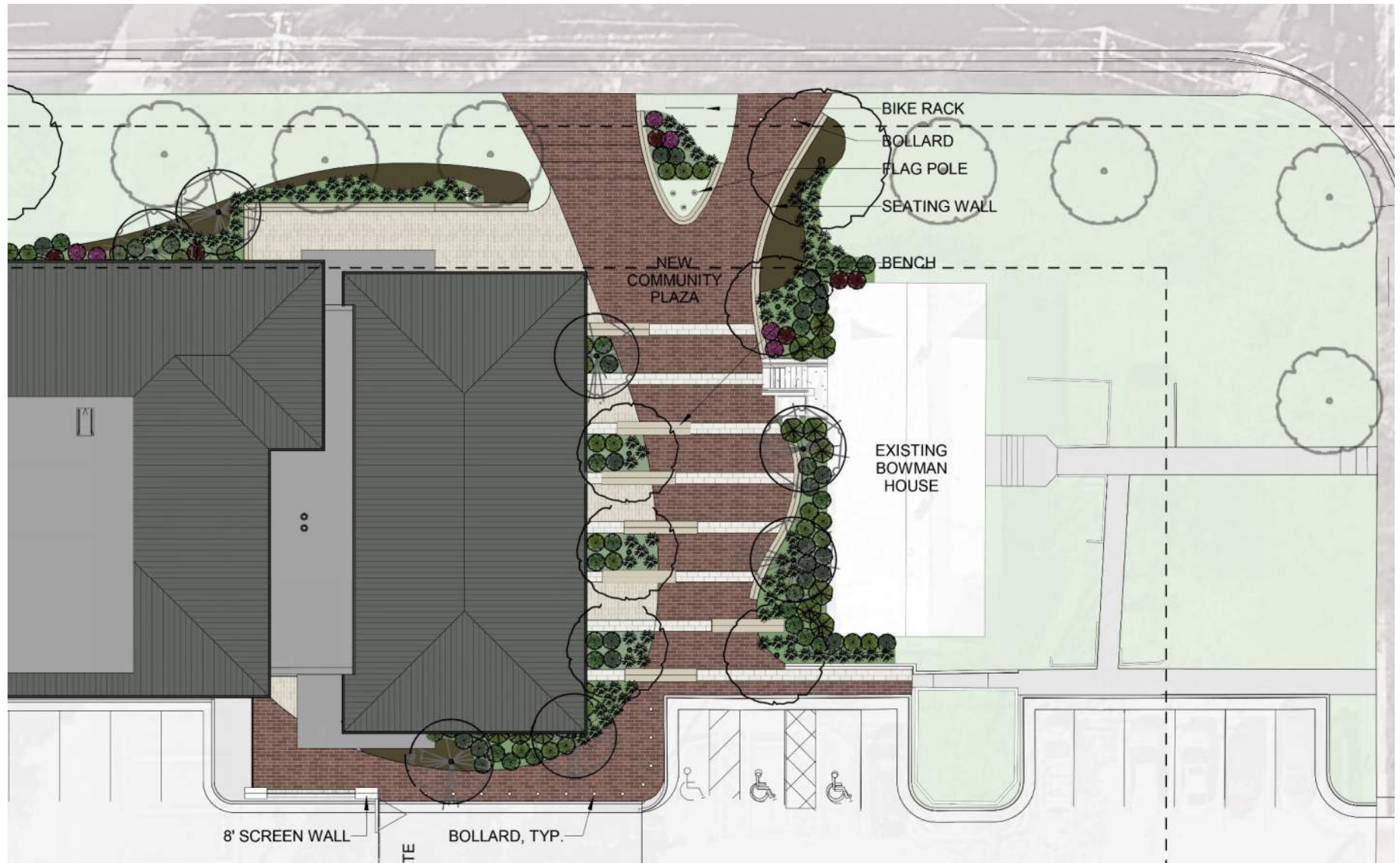
Controlled Public Access + Security Measures

- Accessible – Space should be welcoming and provide equal access for all.
- Comfortable – People in the space should feel safe and comfortable. A mix of sun and shade; a mix of large and intimate space; good lighting and visibility;
- Engaging – Should provide opportunities for social interaction and observation
- Incorporate CPTED site design: Barriers, Grade Changes, Site Features





Plaza Site Plan



Plaza Perspectives



View From Locust Street

Plaza Perspectives



View From Public Parking



Animation

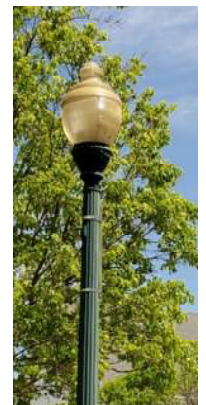
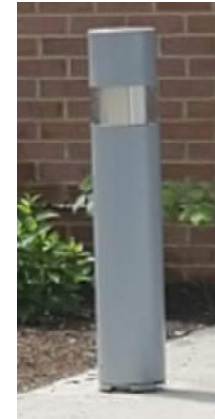


Bowman Site Amenities



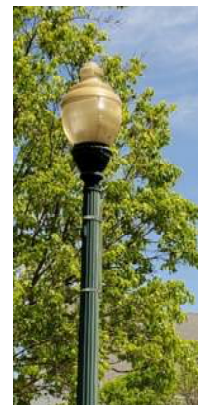
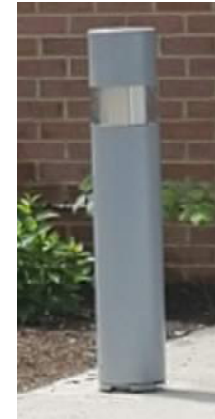
Town Site Amenities

Benches
Light Fixtures
Trash Cans
Bike Racks
Bollards
Water Fountains



Town Site Amenities

Benches
Light Fixtures
Trash Cans
Bike Racks
Bollards
Water Fountains



Exterior Lighting



Parking Lot and Open Area Lighting

Exterior Lighting



Lighting at Landscape walls



Lighting at Handrails



Exterior Lighting



Lighting at Bollards